

# THE CASTAWAY

SUMMER 2022

**A Guide to Truman Lake  
& Lake of the Ozarks**

*A Benton County Enterprise Publication*

# There's No Place Like Home.

...and there's no better place than Warsaw  
and the surrounding area to  
live, work, or play.

**HAWTHORN BANK SUPPORTS OUR  
VETERANS AND AMERICA'S FREEDOM**



- Free On-Line Banking
- Free Bill Pay
- Special Travel Opportunities
- Special CD Rates
- Loan Decision Made Locally



*Home Loans  
Business Loans  
Online Banking  
Cash Management  
Elite Advantage Club*

*Please call or  
stop by today!*



NASDAQ: HWBK  
NMLS: # 409185



*Hawthorn*  
BANK®

Your Community Bank Since 1891  
Warsaw Banking Centers

Main Street  
Banking Center  
200 W. Main

North Town  
Banking Center  
1891 Commercial

(660) 438-2847

hawthornbank.com

## Non-Stop Family Entertainment

Family entertainment is abundant around the lake area. Places such as the Warsaw Municipal Swimming Pool, Boonslick Regional Library, Truman Lake Opry, and Jesters Bowling Alley are just waiting for people like you to come to visit.

### WARSAW MUNICIPAL SWIMMING POOL

Located in Lay Park at 1009 West Jackson Street, the pool offers hours of family friendly summertime fun. Amenities include a diving board, zero entry wading pool, a giant water slide, lap pool, concessions, and water features for the littles. Our professionally trained and friendly lifeguards are on hand and ready to help. Open swim hours are Monday through Saturday 12pm-7pm and Sunday 12pm-5pm. The cost is \$4. Water aerobics classes are held Monday through Friday from 10am-11am as well as Wednesday and Thursday from 7pm-8pm. Swimming lessons are available on Saturdays between 9am and noon. Pool parties also available, call 660-428-2199

for availability and more information.

### BOONSLICK REGIONAL LIBRARY

The Boonslick Regional Library provides reading enjoyment for all ages, including reading programs held all year long. The Warsaw library offers several computers for the use of both adults and children. The library is located at 106 West Jackson Street; in the heart of Warsaw. Hours of operation are from 9:00 AM - 5:30 PM on Monday through Saturday. Contact the library at 660-438-5211 for more information.

### JESTER'S BOWLING ALLEY

Jester's Bowling Alley is a hotspot for tourists and locals alike, the perfect place for entertainment after a day full of fun on the lake. Jester's is located just up 65 Highway towards Lincoln at 23939, US Hwy 65. An arcade and bowling fun await you at Jesters. To hear about their discounts and specials, give them a call at 660-547-BOWL.



## CASTAWAY MAGAZINE 2022

The Castaway is published by the Benton County Enterprise Company, Inc.

Enterprise Building,  
107 Main St.  
Warsaw, Missouri  
65355  
Telephone  
660-438-6312

[bentoncountyenterprise.com](http://bentoncountyenterprise.com)

### Publisher

James Mahlon  
White

### Design Director

Stephanie Adair  
Tyler Simons

### Sales Director

Adam Dean  
Howe

### Sales

Keegan Shiloh  
Glenn

### Content Director

Stormy Waters

### ON THE COVER:

Embodying the spirit of summer at the lake, Mac Vorce and Jen Bradshaw enjoyed Warsaw's gorgeous Drake Harbor view, greeting passing boaters with waves and smiles.

## Welcome to Warsaw

Outdoor adventure has long been Warsaw's heritage, and the opportunities for fishing, hunting, and lake life fun. Warsaw features fantastic access to outdoor recreation and a unique blend of old time charisma and modern day fun. The Harry S. Truman Overlook gives a sweeping view of Truman Lake and Truman Dam, along with a unique portrait of the history of the area. Drake Harbor and the award-winning Riverfront Trails take advantage of the gorgeous scenery along the Osage River, so named for Warsaw's first residents, the Osage Indians. Walk, run, or

bike for 23 miles along the river. The trails are linked by Joe Dice Swinging Bridge, which spans the Osage River and is one of the last bridges of its kind. If off road adventure is what you seek, it awaits at Truman Lake Mountain Bike and Hiking Park and Shawnee Bluff Trail. Warsaw is host to the State Championship Mountain Bike Race, is a stop on the NICA circuit, and home to some of the best single track in the state. Along historic Main Street you'll find an abundance of unique shopping, from old time antique malls to modern day boutiques, and restaurants serving

delicious food sure to satisfy. Main Street has been revamped to resemble the streets of old, with replica street lamps and brick paver sidewalks. Drake Harbor and Main Street are also utilized as festival venues throughout the year, like Jubilee Days and the Junk Festival in summer, through fall to Heritage Days, and don't miss Christmas at the Harbor. Whatever your passion, from outdoor adventure to wining and dining, find it in Warsaw, Missouri.



**GIVING A WARM WELCOME TO WARSAW** is City Clerk Jessica Kendall, Benton County Enterprise Publisher James White, Municipal Court Clerk Kathy King, Utilities Clerk Jill Cobb, and Warsaw Mayor Eddie Simons. Warsaw was once known as the Steamboat Capital of the World and the Gunstock Factory of The World. Today the area is known for being at the heart of Truman Lake and Lake of the Ozarks along with warm hospitality.



# RICK'S OAR HOUSE



Spoonbill headquarters for the Lake of the Ozarks!

## HOURS

Thursday 3-9

Friday 11-10

Saturday 8 - 10

Serving Breakfast 8-11

Sunday 8-8

Serving Breakfast 8-11

Monday 3-9

Restaurant Specials are

Friday • All you can eat Catfish

Saturday • New Orleans Catfish

Sunday • Prime Rib Sandwich

Friday - Sunday • Ricks Famous Prime

Rib from 12oz to 24oz cuts

**Offering Gas, Ice, Beer and  
Boating supplies on the dock!**

**Fireworks Display**

**July 9th, 9:00PM**

25842 Old Oar House Rd • Warsaw, Missouri 65355  
**(660) 438-5398**

81 Mile Marker

# CUSTOM CABINETS

## COUNTERTOPS

GRANITE • MARBLE • QUARTZ

**660-373-0999**

Jerome & Heather Bagley



# Warsaw

## Chamber of Commerce

**660-438-5922**

[WWW.WARSAWCHAMBEROFCOMMERCE.COM](http://WWW.WARSAWCHAMBEROFCOMMERCE.COM)

Your Source for Information at The Lake: [www.warsawchamberofcommerce.com](http://www.warsawchamberofcommerce.com)

# 2022 AREA FIREWORKS:

**July 1st - Osage Bluff Marina**  
Food Trucks at 5:00 PM  
Fireworks at Dark

**July 2nd -  
Lincoln 4th of July Celebration**  
Contests and Games at 9:00 AM  
**Woodland Shores**  
Food and Games at 2:00 PM  
Fireworks at Dark

**July 3rd - Cody's Bait and Tackle**  
BBQ Donation for Next Year at 6:00 PM  
Fireworks at Dark

**July 4th -  
Lincoln 4th of July Celebration**  
Fireworks Beginning At Dusk  
**American Legion**  
Food 5:00-7:00 PM Drinks all Day  
Fireworks at Dark

**July 9th - Rick's Oar House**  
Food and Drinks all day  
Fireworks at 9:00 PM



FIREWORK SHOWS THROUGHOUT THE COMMUNITY, along with retail venues that include Kovac's Fireworks, help ring in the patriotic cheer for locals and visitors alike.



# CITIZENS-FARMERS BANK



## Banking Convenience!

**Cole Camp  
Stover**



# CitizensFarmersBank.com

# MAIN ST FITNESS

212 Seminary  
St Warsaw, MO

660-723-6004

- > Certified personal training options
- > No sign up fees
- > Full mens and women's bathroom/locker rooms
- > Full weight training center/cardio center



- > \$45/ month standard membership
- > \$5 Day Pass
- > 24/7 Member Access
- > Membership plan options/discounts

## SERVING WARSAW AND SURROUNDING AREAS!

Whether you need a new deck, a bathroom remodel or just need your gutters cleaned, we can get it done.

**Call Joe anytime for a free estimate!**

Licensed and insured with references!



- Interior/exterior painting and staining
- Deck building •Power washing
- Interior remodels including electrical and plumbing
- Laying vinyl •Laminating floors.



660-723-4570



## Places To Lay Your Head- Stay A While

### CAMPGROUNDS AND RV PARKS

**Angler's Camp RV Park** • 660-438-6889  
**Country Lakes R.V. Park** • 660-438-8400  
**Deer Rest Campground** • 660-438-3872  
**Edgewater R.V. Park** • 660-438-0203  
**Fairfield R.V. Park** • 660-438-9765  
**Grand River Resort R.V. Park** • 660-438-274  
**Harry S. Truman State Park** • 660-438-7711  
**Kirn Lakeview R.V. Park** • 660-438-3761  
**Lakeview R.V. Park** • 660-438-6373  
**Long Shoal** • 660-438-2342  
**Osage Bluff** • 660-438-3873  
**Our Slice of Paradise** • 660-438-5333  
**Outback R.V. Park** • 660-438-7637  
**Pecan Grove Campground** • 660-438-7688

### HOTELS/MOTELS

**Country Lakes Motors**  
 32550 Highway MM, Warsaw  
 660-438-8400

**Hidden Lake Motel**  
 11958, Hidden Lake Dr.  
 660-428-1208

**Rick's Oar House**  
 BB Highway  
 660-438-5398

**Parkfield Inn**  
 151 N. Dam Access Rd.  
 660-438-2474  
[www.parkfieldinn.com](http://www.parkfieldinn.com)

**Grand River Resort**  
 11919 Hwy 7  
 660-438-2741  
[www.grandriverresort.com](http://www.grandriverresort.com)

**Lake Hills Motel**  
 31535 Hwy 88  
 660-438-5191  
[www.lake-motel.com](http://www.lake-motel.com)

**Osage Bluff Lodge**  
 Hwy 83  
 660-438-289  
[www.osageblufflodge.com](http://www.osageblufflodge.com)

**Reed's R.V. Park & Storage** • 660-438-2068  
**Rocky Top R.V. Park** • 660-438-5097  
**Shady Grove R.V. Park & Campground** • 660-477-0134  
**Shady Oaks Park** • 660-438-5097  
**Sterett Creek** • 660-438-2821  
**Southview R.V. Park** • 660-438-2895  
**The Last Resort** • 660-438-6691  
**The Old Oar House Inn** • 660-438-5398  
**Thibaut Point** • 660-438-2767  
**Tomb Stone Island R.V. Park** • 660-438-1033  
**Truman Dam R.V. Park** • 660-438-9678  
**Truman Lake Resort Fairfield** • 660-438-7576  
**TT Highway Camp Center** • 660-547-0077  
**Waterfront R.V. Park** • 660-438-7274  
**White Branch Marina R.V. Park** • 660-438-6344

**Pecan Grove Cabins**  
 30249 N. Dam Access Rd.  
 660-438-7688

**Lakes Inn Motel**  
 11603 Commercial  
 660-438-2882  
[www.lakesinmo.com](http://www.lakesinmo.com)

**R&C Adventures**  
 12049 Hwy 7  
 660-438-5933

**Truman West Side Suites**  
 13900 Hwy 7  
 660-438-5176

**Reel & Trigger Resort**  
 29720 Hwy UU  
 1-877-782-8393  
[www.reelandtrigger.com](http://www.reelandtrigger.com)

**Uncle Gabby's Cabin Rentals**  
 11015 Hwy 7  
 660-477-9448  
[www.unclegabbyscabins.com](http://www.unclegabbyscabins.com)

**River's End Motel**  
 31635 Hwy 83  
 660-438-2878  
[www.riversendmotel.com](http://www.riversendmotel.com)

**Uncle Gabby's Motel**  
 10825 Hwy 7  
 660-477-3331  
[www.unclegabbys.com](http://www.unclegabbys.com)

**Sterett Creek Cabins**  
 18597 Sterett Creek Dr.  
 660-438-2251  
[www.sterrettcreekvillage.com](http://www.sterrettcreekvillage.com)

**Sterett Creek Motel**  
 18321 Marina Rd  
 660-438-2821  
[www.sterettcreek.com](http://www.sterettcreek.com)

**Parkside Cabins**  
 Warsaw  
 660-438-8399

# MOM'S Kitchen

## 660-438-2278

### 14216 Hwy 7 Warsaw, MO

A MILE WEST OF THE MILE LONG BRIDGE!

BOAT & AUTO  
 RV & CAMPERS  
 AUTO SOUNDS  
 MOBILE DETAILING  
 WINDOW TINTING



ANTHONY BRUCE  
 913-752-7893

*"We Take Pride In Our Work"*

# Area Eats

**B&B Bar and Restaurant**  
25848 Highway BB, Warsaw  
660-438-2131

**Butterfield Limited**  
34124 Native Ave, Warsaw  
660-438-3931

**Charley's Buffet**  
23799 State Hwy B, Lincoln  
660-668-3806

**Cook Shack BBQ**  
8825 Highway ZZ, Iconium  
417-646-5516

**Cosmic Café**  
504 W. Main St, Warsaw  
660-438-6171

**Cow Patties**  
604 W. Main St, Warsaw  
660-438-6046

**Dar's Country Café**  
32770 Hwy MM, Warsaw  
660-438-7477

**El Camino Real**  
120 Polk St, Warsaw  
660-438-9994

**Estes Drive Inn**  
525 N. 65 Hwy, Lincoln  
660-547-3516

**Hideaway Bar & Grill**  
Hwy 7, Warsaw  
660-438-5106

**Hidden Lake Lounge & Restaurant**  
Hwy 7, Warsaw  
660-428-1208

**Hilltop BBQ**  
31594 Hwy 83, Warsaw  
660-438-6311

**Lil' Papa Joe's**  
18321 Marina Rd, Warsaw  
660-223-9300

**Lincoln Inn**  
N.65 Hwy, Lincoln  
660-547-3417

**Long Shoal Marina & Restaurant**  
Hwy 7, Warsaw  
660-438-2841

**McDonald's of Warsaw**  
Hwy 65, Warsaw  
660-438-7612

**Mom's Kitchen**  
14216 Hwy 7, Warsaw  
660-438-2278

**Osage Bluff Restaurant**  
17470 Osage Bluff Rd, Warsaw  
660-438-6464

**Pizza Hut of Warsaw**  
910 Dogwood St, Warsaw  
660-438-6464

**R&R BBQ & Custom Food**  
10966 Hwy 7, Warsaw  
816-945-7722

**Redwing Coffee & Roastery**  
936 E. Main St, Warsaw  
660-438-9424

**Rick's Oar House Inn**  
Hwy BB, Warsaw  
660-438-5398

**The Landing Bistro & Lounge**  
305 W. Main St, Warsaw  
660-438-2732

**The Rusty Skillet**  
248 W. Main St, Warsaw  
660-438-7660

**The Yellow Deli**  
145 W. Main St, Warsaw  
660-438-2581

**TW BBQ**  
Hwy 7, Warsaw  
660-438-5176

**Shirley's Highway Café**  
N. 65 Hwy, Lincoln  
660-547-3500

**Sonic Drive-In of Warsaw**  
2003 Commercial St, Warsaw  
660-438-6200

**Subway of Warsaw**  
1886 Commercial St, Warsaw  
660-438-4234

**Taco Villa**  
Truman Hills Mall, Warsaw  
660-438-6027

**The Drunken Minnow Grill**  
18174 Marina Rd, Warsaw  
660-438-2880

**Nee Nee's Italian Steakhouse and Catering**  
324 West Main  
Warsaw, MO  
660-428-5877



MAIN STREET

Spirits  
DRIVE-THRU

Package liquor store  
with Drive-Thru

1027 E. Main • Warsaw, MO

Open 10 AM Daily

**H&R BLOCK**  
BUSINESS SERVICES

PUT OUR  
EXPERTISE  
TO WORK  
FOR YOU.

FROM PAYROLL AND BOOKKEEPING TO  
EXPERT TAX PREPARATION AND ADVICE,  
H&R BLOCK IS READY TO WORK FOR YOU.

Put our expertise to work for you. Come visit or call us today.



Appointments, Walk Ins or Drop Offs, 1878 COMMERCIAL ST  
WARSAW, MO 65355 | 660-438-6622





14200 Highway 7  
Warsaw, MO 65355

(816) 728-4967

An eclectic shop with handmade items, used books and antiques

**HOURS:**

Memorial Day - Christmas  
Thursday - Saturday  
10:00 AM - 4:00 PM

**Warsaw  
Fitness**



**NEW LOCATION:**  
1507 Commercial St.  
in Warsaw!

Open 24/7!

No Contracts/Sign-Up Fees  
Brand New Equipment  
New HVAC • Better parking!

Julie's  
**ARTILLERY HILL  
STORAGE**



Owned and Operated by  
Rich and Julie Guyette

5x10 - 10x10 - 10x20 • Security Gate • 24 Hour Security Cameras  
South of Warsaw on Hwy MM (Wildcat Drive)  
Across from the American Legion Post #217 • 32656 Pleasant Ridge Dr., Warsaw, MO

**660-438-5113 660-723-3939**

BAIT • FUEL • PROPANE • GROCERY • COLD BEER • LIQUOR • LOTTO  
HUNT BROTHERS PIZZA



11429 HWY Z WARSAW, MO 65355 660-438-6300

**J & D**

Pharmacy • Home Medical Supply



Drive-Thru, Vaccinations,  
Full-Line Home Medical Equipment,  
Medicare Billing,  
Free Prescription Delivery In  
Warsaw & Lincoln (In Town),  
And Much More!



**HOURS**

Mon-Fri: 8:30 - 6pm  
Lobby Closes @ 5:00  
Drive Thru Closes @ 6:00  
(Drive-Thru Only)

**CONTACT US**

CALL (660) 438-7331  
TEXT (660) 200-1063  
VISIT [jdpharmacy.com](http://jdpharmacy.com)

1330 Commercial St, Warsaw, MO 65355  
3202 W 16th St, Sedalia, MO 65301



**Cow Patties  
Restaurant**

**Full Menu Served All Day**

Home of the 16 oz. Cow Pattie Hamburger

Hours

Mon-Sat: 6 AM to 2 PM  
Sunday: 6 AM to 1 PM

604 W. Main Street  
Warsaw, MO  
660-438-6046

Little Bit of  
**EVERYTHING**  
Outlet Store

Tuesday - Saturday • 10:00 AM - 5:00 PM  
818 Main St. • Warsaw, MO 65355



SERVING FOR OVER 60 YEARS  
BEEF • HAM • RIBS • PORK  
DIVERSE MENU    ORIENTAL FOOD  
EGG ROLLS • CRAB RANGOON  
SWEET + SOUR PORK • CASHEW CHICKEN  
AND MUCH MORE!

Hours: Tuesday - Thursday • 11:00 AM to 8:00 PM  
Friday & Saturday • 11:00 AM to 9:00 PM  
**Hwy 83, Warsaw MO**  
**Wildcat Drive**  
**Carry Out 660-438-6311**

**ONLY PIT BBQ  
IN THE AREA!**

**OLDEST RESTAURANT IN THE AREA**

BECAUSE WE  
INSURE MORE  
THAN YOU  
THINK



**Shawn Poyser Agency    (660) 438-8898**

# ADVANTAGE REAL ESTATE

**(660) 438-0070**

1876 Commercial, North Town Mall  
Warsaw, MO

[www.advantageland.info](http://www.advantageland.info)



Pam Grobe  
660-525-0740  
[WWW.PAMATTHELAKE.COM](http://WWW.PAMATTHELAKE.COM)



Mary Shinn  
660-221-7603



LeeAnn Petree  
816-838-2534



**NATIONWIDE EXPOSURE FOR LISTINGS**



## Drake Land Title Company

*Serving Benton County For Over 100 Years*

### Escrow Closings & Title Insurance

167 West Main, P.O. Box 998 • Warsaw, Missouri 65355

(660) 438-5188

Fax (660) 438-6644

[info@draketitle.com](mailto:info@draketitle.com)



## TOLLIVER'S SALES & SERVICE

(Lincoln's Tire Store)

FOR ALL YOUR AUTOMOTIVE NEEDS

BRAKES • OIL CHANGES  
INSPECTIONS • TIRES

FOR FAST TOWING SERVICES

CALL 660-287-4849

498 North 65 Highway, Lincoln, MO  
Office: (660) 547-2277



**CAN'T BEAR TO STAY ANYWHERE ELSE!**

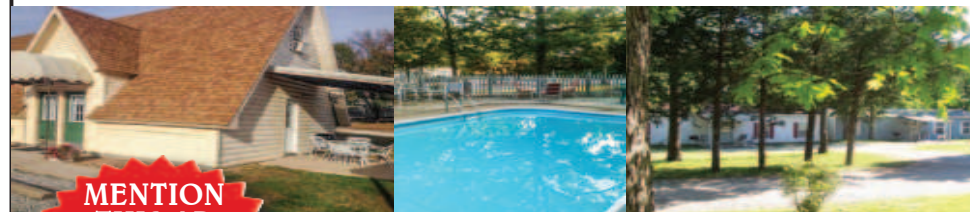
**CABINS • KITCHENS • POOL**

In the Heart of the Truman Lake Recreational Area!

11919 Hwy 7

Warsaw, MO 65355

660-438-2743



MENTION  
THIS AD  
FOR A  
DISCOUNT!

[www.grandriverresort.net](http://www.grandriverresort.net)



@grandriverwarsaw



Since 1972, we have been dedicated to providing you our Golden Standard of Care.

We offer convenient access to highly trained medical experts and provide a full-range of primary care services, as well as specialized areas.

All of our providers have a Heart of Gold and make it a priority to get to know you so we can deliver the personalized attention you deserve.

Our services include:

- Bariatric and Metabolic Clinic
- Birthing Center
- Cardiac and Pulmonary Rehabilitation
- Cardiology
- Dermatology
- Diabetic Services
- Ear, Nose and Throat (ENT) and Audiology
- Emergency Services
- Endoscopy
- Family Practice
- Family Practice/Obstetrics
- Food and Nutrition Services
- Geriatric Services
- Home Services
- Imaging Services
- Infusion Therapy
- Internal Medicine
- Laboratories
- Nephrology
- Neurology
- Neurosurgery
- Obstetrics and Gynecology
- Oncology and Hematology
- Ophthalmology and Optometry
- Orthopedics
- Pain Management
- Pediatrics
- Podiatry
- Psychiatry and Behavioral Health
- Pulmonology
- Rheumatology
- Sleep Studies
- Social Services
- Surgical Services
- Therapy Services
- Urology
- Vascular Clinic
- Walk-in Clinic
- Women's Health
- Wound and Ostomy Clinic



[gvmh.org](http://gvmh.org) | [@chooseGVMH](https://www.facebook.com/chooseGVMH)  
660.890.7300

Clinton | Osceola | Warsaw | Windsor

# Parks & Recreation Galore!

The Steamboat Landing at Drake Harbor, located behind the Warsaw Community Building on Lake of the Ozarks, was once used for the distribution of supplies on the Osage River to the city of Warsaw. Fur traders would meet the giant steamboats here and supplies such as salt, iron, meat, grains, and whiskey would make their way in and out of the river city. Today, Warsaw is the furthest west city on the Lake of the Ozarks and home to the breathtaking Truman Lake.

The Steamboat Landing offers a 1,000-foot-long boardwalk, lit up for nighttime enjoyment, that leads to the MK White Park which offers a Disc Golf course and skateboarding area. From this park, you will also reach the Osage Walking/ Biking Trail that stretches across one and a half miles to 65 Highway.

In Drake Harbor, you will find boat docks accessible from Lake of the Ozarks, public boat ramp, playground, picnic area, amphitheater, public restrooms, fishing docks, horseshoe pit, and walking trail which leads to the historical Joe Dice Swinging Bridge.

The decking on the Joe Dice Swinging Bridge was refurbished in the summer of 2016, and now allows visitors to reach the Kickapoo Island Area and Bledsoe Ferry Trail. Originally built in 1904, the bridge was placed on the National Historical Register on September 17, 1999.

More information on the Steamboat Landing and Drake Harbor can be obtained by visiting the Warsaw Area Chamber of Commerce or their website [www.welcometowarsaw.com](http://www.welcometowarsaw.com).

Truman Lake is surrounded by beautiful parks that can be enjoyed regardless of the

season. Here you will find over 100 acres of maintained parks and recreation area available for your enjoyment.

## AREA PARKS:

**Bledsoe Ferry** is located along the banks of the Osage River, just off the West Dam Access Road. Overlooking Truman Dam, it offers a number of covered picnic tables and public restrooms. A large field is also easily accessible for your outdoor sporting events.

**Drake Harbor and Recreation Area** is located on the Osage River arm of the Lake of the Ozarks, just one block off of Main Street, at the intersection of Harrison and Benton Street. This area offers a few picnic tables, public restrooms, amphitheater, horseshoe pits, walking trails, boat ramps, playground, and fishing docks.

**Lay Park** is located on West Jackson Street and is home to the new Warsaw Municipal Swimming Pool and Lumpe Field. Here you will find a mountain bike skills park, picnic area, swing set, playground, public restroom, and two tennis courts.



**Long Shoal Park** is located on Hwy 7 just next to Long Shoal Beach. A covered picnic area, public restroom and playground are available.

**Harry S. Truman State Park** is located just off of Hwy 7, down UU Highway. This park offers hiking trails, covered picnic area, a playground and public restrooms.

**Shawnee Bend Park** is located just past Shawnee Bend Golf Course. At this park, you will find public restrooms, playground and ample picnic areas to enjoy.

**Rotary Park** is located at the corner of Redbud and Gunstock in Warsaw. It has two picnic tables, outside grills, a playground, and Warsaw's only outdoor basketball court.

**MK White Park** entrance is at the corner of Main Street and MK White Drive. This park is ordered on. The west by the beautiful Osage River, and has fishing docks, restrooms, three picnic tables, a 9-hole disc golf course, wide open space for sporting entertainment, a skate park, and a walking trail.

# Beaches And Swimming

Whether you prefer to swim by boat or enjoy a relaxing day of swimming and picnicking at one of the seven area beaches, there's always room for non-stop fun in Truman Lake.

The U.S. Army Corps of Engineers manages the beaches of Shawnee Bend, Long Shoal, Windsor

Crossing, Sparrowfoot, Berry Bend, Thibaut Point, and Harry S. Truman State Park. The beaches are typically open from May 15 through September 15, with hours being from 8:00 AM until dusk. The swimming areas are outlined with floating buoys and boats are prohibited in swimming

areas. No life guards are on duty. Alcohol, glass containers, and pets are not allowed on Corp -managed beaches. Swimming is prohibited around all boat ramps, courtesy docks, and immediately upstream and downstream of Truman Dam.



# ReeceNichols

## GOLDEN KEY REALTY

An Independently Owned and Operated Member of the Reece & Nichols Alliance, Inc.

800-760-2255 • 660-438-7228

Located on Highway 65 just North of Warsaw

Visit [www.linkatthelake.com](http://www.linkatthelake.com) For More!



Email: [goldenkey@reecenichols.com](mailto:goldenkey@reecenichols.com)



**Your Community. Your Bank. Your Relationship.**



Member  
FDIC

**COMMUNITY  
NATIONAL  
BANK & TRUST**

**[www.mybankcnb.com](http://www.mybankcnb.com)**

We may have a new name, but we have the same friendly staff you have come to know and trust. A bank shouldn't be just a bank. A bank should be a trusted financial partner. At Community National Bank & Trust, we're proud to be that for our customers. Opening your first account with us, exploring mortgage loan options, or applying for a credit card is easy. Stop by one of our banking centers today!

101 S Highway 65 Lincoln

660-547-3311

1695 Hilltop Dr Warsaw

660-438-9554





**660-438-2423**

Check out our NEW facebook page!

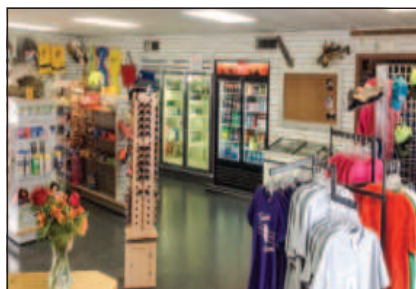


**FREE PUBLIC BOAT RAMP**  
**PONTOON & FISHING BOAT RENTALS**  
**FUEL • BAIT • FISHING**  
**FISHING PERMITS**  
**ICE & CONVENIENCE STORE ITEMS**  
**SEASONAL & NIGHTLY SLIP RENTALS**  
**FENCED STORAGE**  
**BEACHES & CAMPING CLOSE BY**  
**& LOTS of FUN for ALL!!!**



***A full service family run marina providing  
all you need to enjoy Truman Lake!***

Whether you are an avid fisherman looking to spend the day on the lake fishing trophy catfish, or if your idea of a good time is spending a relaxing afternoon on a pontoon with your family, Truman State Park Marina boat rentals has you covered!... Already have a boat? Check out our available nightly and seasonal boat slip rentals, as well as dry storage.



**14950 State Park Rd E • Warsaw, MO 65355**

*Located 5 miles west of Warsaw. HWY 7 to HWY UU north.  
UU dead ends right into beautiful Truman State Park.*

**BAR & GRILL**

*Relax & Kick Back  
on our beautiful on-the-water deck!*

# Fun Facts About Truman Lake

- Warsaw is known for being the “Spoonbill Capital of the World”
- The average depth of Truman Lake is 20 feet
- The average water temperature in the summertime is between 85 and 90 degrees
- There are 752.48 square miles in Benton County
- There are 46 square miles of water in Benton County
- The population of Warsaw is 2,197 (according to the 2018 census)
- Warsaw is 709 feet above sea level
- Warsaw is the county seat of Benton County
- Warsaw holds the highest recorded temperature in the state of Missouri,  
118 degrees on July 14, 1954
- Warsaw holds the coldest recorded temperature in the state of Missouri,  
-40 degrees on Feb. 13, 1905
- The Joe Dice Swinging Bridge was once destroyed by a tornado in June of 1924
- Warsaw is the home of one of the ten largest warm water fish hatcheries in the nation
- Warsaw is located amongst two of Missouri’s largest lakes, Truman and Lake of the Ozarks



## Boat Ramps & Fees

There are numerous boat ramps accessible around Truman Lake that are managed by the U.S. Army Corps of Engineers. Self-pay stations are located at the entrance of each pay ramp and are set up for daily use. Annual passes are also available and can be purchased at the Harry S. Truman Visitor Center, Project Office, or at any attendant

booth located at campground entrances. For more information, contact 660-438-7317.

The daily fee for using the Corps managed boat ramps is \$5, and an annual pass is \$40. Exclude any Missouri resident 65 years of age or older or any person (resident or not) 15 years of age or younger.

Those required to

carry a fishing license agree to observe all of the rules of the Wildlife Code of Missouri and are not allowed to lend the license to someone else for use. They will allow inspections of their permit, picture ID or catch and equipment by an agent of the Conservation Department and will need to carry their license (permit) at all times while fishing.

# Pre-Departure Checklist

*You can help assure a good time while operating your vessel by performing this pre-departure check.*

- Check the weather forecast for the area and time frame during which you will be boating.
- Make sure that the steering and throttle controls operate properly and all lights are working properly.
- Check for any fuel leaks from the tank, fuel lines, and carburetor.
- Check the engine compartment for oil leaks.
- Check hose connections for leaks or cracks, and make sure hose clamps are tight.
- Drain all water from the engine compartment, and be sure the bilge plug is replaced and secure.
- Check to be sure you have a fully charged engine battery and fire extinguishers.
- If so equipped, make sure the ignition safety switch and wrist lanyard are in good order.
- Make sure you have the required number of personal flotation devices (PFD's), and check that they are in good condition and the proper sizes.
- Leave a float plan with a reliable friend or relative.





**OZARK**  
*Salon*  
 Lake Hair Do Care  
 660-438-2771

1896 East Main Street • Warsaw, Missouri  
 Men, Women, Children • Full Service Salon

*HOURS*  
 TUESDAY - FRIDAY  
 10:00 AM - 7:00 PM  
 SATURDAY  
 10:00 AM - 2:00 PM  
 MONDAY: BY APPOINTMENT ONLY  
 Stylists: *Melanie & Dawn*

Find us on  facebook @ozarksalon



Suzie Brodersen CLU RICP, Agent  
 1605 Sunchase Dr  
 Warsaw, MO 65355  
 Bus: 660-438-7472  
 warsawmoinsurance.com

Plan your  
 next dream

Whatever you're saving for next, it's easier to get there with the right plan. I can help you look at your financial goals and find smart ways to save. Call me today.

Like a good neighbor,  
 State Farm is there.®

State Farm  
 Bloomington, IL  
 2001627

 **State Farm**®

**BACK IN ACTION**  
 Chiropractic, LLC  
 Sports Rehab & Acupuncture  
**KEEPING YOU IN THE GAME OF LIFE**

Manual And Activator Style Adjustments  
 Certified Chiropractic Sports Physician

Ancillary therapies include  
 Kinesiology Taping • Rehab exercises  
 Functional Movement screens  
 Soft Tissue Release therapy



Dr. TJ Reichert

**(660) 223-0199**

1650 COMMERCIAL ST, SUITE B  
 WARSAW, MO 65355

**NEW LOCATION!!!**

[www.backnactionchiropractic.com](http://www.backnactionchiropractic.com)

# Heavenly Pets at the Lake



Professional  
 Dog Grooming

**660-547-0033**

LIKE US ON  
 **facebook**

[www.heavenlypetslincoln.com](http://www.heavenlypetslincoln.com)



**AMERICAN FAMILY  
 INSURANCE**

*Jeanette Limback Agency*



*Rick*



*Jeanette*



*Whitney*



1894 E Main St | PO Box 1055  
 Warsaw MO 65355

660.438.7714 | 800.692.6326

**YOUR HOMETOWN DREAM  
 PROTECTORS SINCE 1960**

PHONE  
660-668-4646

TOLL-FREE  
1-877-323-2208



106 South Maple • Cole Camp, MO 65325

Mike Snell, R.Ph.

Tammy Snell

Paula's Dog Grooming  
By Appointment Only



Paula Wampler

(660) 223-6448

942 E. Main St

Warsaw MO, 65355



Maggie McMillin Owner/Stylist  
Shianne Hillyer Stylist

324 Seminary • Warsaw MO  
Full Service Salon • Walk Ins  
660-438-6232

Closed  
Saturday-Sunday-Monday  
8am to 5pm



At The Lake Quilt Shop

Great Price Fabric, Notions, Fat Quarters  
& Make Your Own Jellyrolls!

Lori VanNatta / [atthelakequiltshop@gmail.com](mailto:atthelakequiltshop@gmail.com)  
Hours: Tues-Fri 9AM-5PM Sat. 9AM-2PM  
31958 83 HWY, South Warsaw, MO 65355  
660-223-2175

**Fajen**

Insurance Agency, LLC

**Rick Fajen, Agent**

HOME • AUTO • LIFE  
FARM • LIABILITY • HEALTH  
BUSINESS • WORKMANS COMP

601 Commercial Street,  
Suite #1

Warsaw, MO 65355

**660-438-3800**

[rfajen@fajenins.com](mailto:rfajen@fajenins.com)

**TRUMAN LAKE MARINE**

LANDAU  
MERCURY

BUY • SELL • TRADE • SERVICE

CUSTOM BOAT COVERS & UPHOLSTERY

SUZUKI

660-438-6358



5 miles N on 65

# Bank Like Anything's Possible

Make the impossible, possible.  
[equitybank.com/possible](http://equitybank.com/possible)

100 E Main St. Warsaw, MO 65355  
660-438-4388



**EQUITY  
BANK**



# KOVAC'S FIREWORKS®



**NO GAMES!**  
**NO GIMMICKS!**  
**JUST LOW, LOW  
PRICES!**

# HUGE ARTILLERY SELECTION



**COLOR CHANGING  
ARTILLERY**

## THE BEST OF THE BEST!

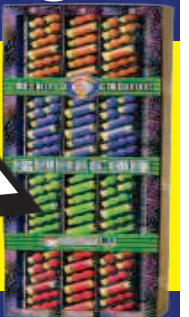
**ENTER  
IN-STORE FOR  
A CHANCE TO**

# WIN

**RUBICON ARTILLERY KIT**

**DRAWING TAKES PLACE  
ON JULY 2 AT 8:00 PM**

**NEED NOT BE PRESENT TO WIN. MUST BE  
18 TO ENTER. 1 DRAWING PER LOCATION.**



**ST. JOSEPH**

7701 SE King Hill Rd  
(816) 238-BOOM

**LAURIE**

144 Sherman Ridge Dr  
(573) 374-1830

**WARSAW**

31487 Hwy 83  
(660) 438-7778

OPEN JUNE 20TH - JULY 4TH FROM 9 AM TO MIDNIGHT  
OPEN JULY 5TH - 10TH FROM 10 AM TO 9 PM

OPEN JUNE 20TH - JULY 4TH FROM 9 AM TO 11 PM  
OPEN JULY 5TH - 10TH FROM 10 AM TO 9 PM

OPEN JUNE 20TH - JULY 4TH FROM 9 AM TO 11 PM  
OPEN JULY 5TH - 10TH FROM 10 AM TO 9 PM

**NO DEALERS PLEASE. WE HAVE THE RIGHT TO LIMIT QUANTITIES ON ANY ORDER.**

# KOVAC'S FIREWORKS®

14,000 SQ. FT!

WE RESERVE THE RIGHT TO LIMIT QUANTITIES.



**NO GAMES!  
NO GIMMICKS!  
JUST LOW, LOW  
PRICES!**



## ST. JOSEPH

7701 SE King Hill Rd  
(816) 238-BOOM

OVER  
**1000**  
ITEMS

## LAURIE

144 Sherman Ridge Dr  
(573) 374-1830

## WARSAW

31487 Hwy 83  
(660) 438-7778

**WILD CARD  
OR MEGA WIN**

**SALE \$9.99  
EACH**



200 GRAMS

LIMIT 1 PER PERSON, PER ORDER,  
PER VISIT. WHILE SUPPLIES LAST.  
EXPIRES 7/10/22.

**SNOW CONE  
FOUNTAIN**

**\$16.99**



**SALE**

LIMIT 3 PER PERSON,  
PER ORDER, PER  
VISIT. WHILE  
SUPPLIES LAST.  
EXPIRES 7/10/22.

**SALE COLOR  
SMOKE BALLS**

**\$11.99** Reg. \$14.99

LIMIT 12 PER PERSON,  
PER ORDER, PER VISIT.  
WHILE SUPPLIES LAST.  
EXPIRES 7/10/22.



500 GRAMS

**HIT THE ROAD JACK  
GO FISHING, AND  
SCREAMIN' EAGLE**

**\$39.99 EACH**

LIMIT 1 PER PERSON,  
PER ORDER, PER VISIT.  
WHILE SUPPLIES LAST.  
EXPIRES 7/10/22.

# RAGING BULL

**\$69.99  
EACH**

**5" ARTILLERY**

REG. \$109.99

Limit 2 per person, per season. While supplies last.  
Expires 7/10/22.

**WE WILL MATCH ANY  
VALID ADVERTISED  
RETAIL PRICE!**

In-stock items only. Absolutely no  
substitutions. Does not apply to percentage  
off coupons, discounts or offers. All prices  
valid through July 10, 2022.

**NO DEALERS, PLEASE**

We have the right to limit quantities.

VISIT US AT [WWW.KOVACFIREWORKS.COM](http://WWW.KOVACFIREWORKS.COM)

# MOZARK MOCHA

## FINE COFFEE & MORE

431 N Highway 65 • Lincoln, MO 65338

# 660-547-CUPS

BREAKFAST BURRITOS • CROISSANTS  
CINNAMON ROLLS • BISCUITS & GRAVY  
MUFFINS • CAKES • CUPCAKES • HOT  
CHOCOLATE BOMBS • CHICKEN WRAPS

6:00 AM - 3:30 PM • 7 DAYS A WEEK



[www.MozarkMocha.com](http://www.MozarkMocha.com)



## WE'VE GOT TIRES!

CAR • TRUCK • LAWN MOWER • TRACTOR

## WE DO IT ALL!

TIRES • LUBE • EXHAUST  
ALIGNMENTS • BRAKES



Firestone

YOKOHAMA



901 E. Main | Warsaw, MO | 438-3100



324 MAIN STREET • WARSAW, MO 65355  
(660) 438-4421

## 31 Chiropractic



292 S Highway 65  
Lincoln, Missouri 65338

# 660-460-3719

# JEREMIAH MOSLEY, LLC

Attorney & Counselor at Law

## 660.530.0103

601 Commercial Street, Suite 3 | Post Office Box 1119 | Warsaw, MO 65355-1119

fax: 660.530.4438

[JEREMIAHMOSLEY.COM](http://JEREMIAHMOSLEY.COM)



# WEAVER'S



EST. 1972

## BODY SHOP<sub>LLC.</sub>

### American & Foreign Insurance Work Welcome

750 E. Main St • Warsaw, MO

660-438-6717

### FAST FRIENDLY SERVICE WITH THE BEST PRICES!

Beth's  
OSAGE MINI-MART

915 E. Main St.

Warsaw, MO

660-438-9575



**YOUR**

**#1**

CRAPPIE  
HEADQUARTERS

GAS • BEER • BAIT • TACKLE  
SPIRITS • GROCERIES

- 7 AM - 11 PM / 7 Days a Week
- Tournament Information & Entry Forms
- 5% Sunday Beer & Liquor

*All major credit cards accepted*

Wildlife Permits • All Live Bait • Block Ice • Lottery

**G&W**  
*Neighborhood* **COUNTRY MART**

BETTER QUALITY... 1000 E. Main St., Warsaw MO  
BETTER VALUES... 660-438-5179

OPEN 7 DAYS A WEEK! 7 AM TO 9 PM

HAND CUT CHOICE ANGUS BEEF

Springer Mountain Farms Fresh Chicken

Delicious, Wide Variety of Fresh Produce

Full Deli with Daily Lunch & Dinner Specials



The Area's Largest Selection of  
Craft and Imported Beers

AND Your Place to Go For  
Fishing and Tackle Supplies!

Check For Our Pink Tags on Thousands of Reduced Items Each Week!

We Want To Help You Save On Your Food Budget

CHECK OUT OUR WEEKLY  
FACEBOOK ONLY SPECIALS



# The Pottery Shoppe

Open 10-5  
Wed-Sat

*Gifts and decorative accessories  
for the home and garden.*

*All pottery made in USA at  
119 E Main, Warsaw MO*

**(660) 428-2354**

# Farmers Mutual Protective Assn.

*Insuring Farms - Homes - Lake Property*

(660) 547-2323

E-mail: [fmpa\\_cathy@embarqmail.com](mailto:fmpa_cathy@embarqmail.com)

Website coming soon - [farmersmutualprotectiveassociation.com](http://farmersmutualprotectiveassociation.com)

Agent: Cathy Burton

Agent: Amy Manning

445 N. Hwy 65 - P.O. Box 11

Lincoln, MO 65338



Business Hours:

Monday to Friday

9 to 12 - 1 to 4

## CoCo Nails

660-438-5888



1651 COMMERCIAL ST. • #2  
WARSAW, MO 65355

Monday - Friday 9am - 6pm

Saturday 9 am - 6pm

Sunday closed

*Professional Nail Care*

# Back In Time HEADQUARTERS

234 West Main St.

Warsaw, Missouri



Dairy Ice Cream

So Many Flavors!

Banana Splits

Sundaes

Shakes

Malts

Cookies

Pies

MUCH MORE!

PIE, CAKES, OLD FASHION CANDY!

OLD  
FASHION  
STORY

OLD  
TIME  
TOYS





**World Finance**



**Personal installment  
loans up to \$10,000**



**Most loans approved  
in about one hour**



**Professional Tax  
Preparation**

**[www.LoansByWorld.com](http://www.LoansByWorld.com)**

\*Most applications can be approved in about 60 minutes. All loans subject to our usual credit underwriting policies.  
World Acceptance Corporation ©2021

**187 West Main Street  
Warsaw, MO 65355  
(660) 428-1293**

# DRAKE HARBOR TRADING CO.

221 West Main Street Warsaw, Missouri  
816-213-6626



WINE TASTINGS • BEER  
CANNED GOODS & SNACKS  
CLOTHING • HOME DECOR  
BACK PATIO • FUN ATMOSPHERE



OPEN  
FRIDAY - SATURDAY  
12PM - 8PM

CLOSED  
SUNDAY - THURSDAY



*Just Teasin' Salon*

Call Crystal, Tammy or Tara

Open Tuesday - Friday  
8AM to 5 PM

Saturday by appointment only  
Evenings by Appointment Only

235 W. Washington St.

660-438-3600

# MIKE'S AUTO REPAIR

*Quality  
Service*

*at  
Reasonable Rates*

Monday - Friday  
8 AM to 5 PM

309 W. Washington St.  
Warsaw, MO  
(660) 438-4484

# TWIN LAKES

Accounting & Tax Service

936 E Main St., Ste D  
Warsaw, MO 65355  
(660) 438-1090



@ Twin lakes accounting and tax service

Steve Cannon Agency, LLC



## Steve Cannon

1622 Commercial St  
Warsaw, MO 65355-0336  
SCannon@ShelterInsurance.com  
ShelterInsurance.com/SteveCannon  
P 660-438-5108

We're your Shield. We're your Shelter



# Reece Nichols

## GOLDEN KEY REALTY

An Independently Owned and Operated Member of the Reece & Nichols Alliance, Inc.

800-760-2255 • 660-438-7228

Visit [www.linkatthelake.com](http://www.linkatthelake.com) For More!

Located on Highway 65 just North of Warsaw



Email: [goldenkey@reecenichols.com](mailto:goldenkey@reecenichols.com)





FULL BODY MASSAGE • FACIALS  
MANICURES • SPA PEDICURES  
SPRAY TANNING • REFLEXOLOGY  
AIR BRUSH MAKEUP • EAR CANDLING  
HAIR: CUT - STYLE - COLOR

**660. 438. 8686**

**1634 E. Main St, Warsaw**



# STERLING AVENUE AUTO SERVICE

TIRES • BRAKES • DIAGNOSTICS  
COMPLETE AUTO REPAIR

1841 East Main Street

Warsaw Missouri

**(660) 438-4599**

Monday - Friday: 8 AM to 5 PM

Saturdays: 9 AM to 12 PM



1083 East Main St.  
Warsaw, Missouri 65355  
**(660) 723-9236**

r | c  
S T Y L E S  
S A L O N

C o n t a c t

6 6 0 . 2 3 3 . 1 6 4 7



rlc styles salon



rc.styles.salon

# Outdoor Attractions

Cycling, hiking, fishing, hunting, and of course lake life fun! The Truman Lake area offers countless sporting attractions that are great for the whole family. These attractions include: The Walking/ Biking Trails of Drake Harbor, Shawnee Bend Golf Course, Truman Lake Mountain Bike Park and Hiking Area, Harry S. Truman State Park, a Disc Golf area, and a Skate Park.

## WALKING AND BIKING TRAILS AT DRAKE HARBOR

The Drake harbor area is home to numerous walking trails that show off some of Warsaw's most beautiful countryside. These trails allow for users to get a glimpse of some of the unique wildlife roaming the area, all while catering to enthusiasts of nature, walking, and biking alike. The current trails include the Bledsoe Ferry Trail, Kickapoo Island

Trail, Steamboat Landing Trail, Osage Trail, and Eastgate Trail. The trails are accessible at various points across Warsaw and more information regarding them can be obtained through calling 660-438-5522.

## SHAWNEE BEND GOLF COURSE

The Shawnee Bend Golf Course offers a beautiful nine-hole, par 36 course to challenge even the avid golfer. Located two miles northwest of the center of Warsaw, the Shawnee Bend Golf Course offers a driving range, clubhouse, snack bar, golf shop, putting green, and indescribably gorgeous views of Truman Lake and the area surrounding it. You may even be able to catch a glimpse of the local wildlife along the way. The hours of operation are from 7:00 AM to dusk from Monday

to Sunday (except during league play.) Contact the course at 660-438-6115 for more information or visit the website at [www.shawnee-bendgolf.com](http://www.shawnee-bendgolf.com).

## TRUMAN LAKE MOUNTAIN BIKE PARK AND HIKING AREA

The Truman Lake Mountain Bike Park and Hiking Area is located three miles from downtown Warsaw on Benton House Avenue, just off the Truman Dam Access Road. The park offers several different biking and hiking trails for all different levels of riders and hikers. Come out and enjoy the beautiful scenery while treating yourself to a hiking trip or bike ride like no other. Contact the City of Warsaw at 660-438-5522 for more information.

## BERRY BEND EQUESTRIAN PARK

Berry Bend Equestrian Park is located at the Berry Bend Campground area down Z Highway and off

of 7 Highway. The park is limited to equestrian users only. Amenities include corrals, overhead tie posts (next to some campsites), all season water hydrants, and several miles worth of trails. Call 660-438-7317 for any more info.

## HARRY S. TRUMAN STATE PARK

The Harry S. Truman State Park is can be found on UU Hwy about seven miles from Warsaw, off

of Hwy 7. Sitting on a peninsula, Truman State Park offers many activities for all to enjoy. Hiking, fishing, boating, camping, swimming, picnic areas, playgrounds, a marina, beaches, and abundant wildlife are what you can expect at the Harry S. Truman State Park. Hours are from sunrise to sunset and admission is free, although daily fees are required for use of the

beaches. Contact the park office at 660-438-7711.

## M.K. WHITE PARK

M.K. White Park connects to the Drake Harbor area off of Main Street in Warsaw, behind the Corner Gardens. At M.K. White Park, you will find a challenging and fun disc golf course. Lake of the Ozarks backs up to M.K. White Park and offers bank fishing opportunities and wildlife viewing.



MAIN STREET

Spirits

DRIVE-THRU

Package liquor store  
with Drive-Thru

1027 E. Main • Warsaw, MO

Open 10 AM Daily

Get Your Kicks

Come In For The  
Fun & Outside  
Activities In The  
Beer Garden!

312 Benton St.  
Warsaw, MO

(660) 438-2448

At Nix Horseshoe Bar

See You There!

**Pitts**  
Over  
40  
Years  
Since 1971  
**HOMES, INC.**

*“For A Home That Fits,  
Choose Pitts”*

29101 Old Hwy. 65,  
Dam Access Road, Warsaw, Mo

**660-438-2505**

[www.pittshomesinc.net](http://www.pittshomesinc.net)



AUTO • HOME • LIFE

It's your  
getaway

Whether you're enjoying the roar of an engine on a tight turn or dropping a line in your favorite fishing hole...it's your getaway.

Shelter's boat insurance lets you relax and enjoy the ride. Ask your agent about our competitive rates and coverage options. Let us quote your boat - or personal watercraft.

It's your getaway, and it's important to you. Let us help you Shelter it.



**LeeAnn Beaman**

Agent

190 S. HWY. 65

Lincoln, MO. 65338-0225

(660) 547-0099

We're your Shield. We're your Shelter.  
[ShelterInsurance.com](http://ShelterInsurance.com)



413 E MAIN  
WARSAW MO  
660-438-2186

**BIKES, KAYAKS  
& PADDLEBOARDS**



Rentals  
Tours  
Sales

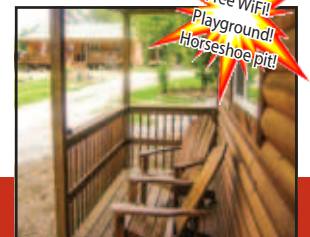


**SNACKS, GEAR,  
MERCH, & MORE**

Prices and Reservations online at  
[WarsawAdventures.com](http://WarsawAdventures.com)

**R&C**  
**Adventures**

**LOG CABIN RENTALS BY  
TRUMAN LAKE**



Open All Year!  
Free WiFi!  
Playground!  
Horseshoe pit!

*The Number One Comfort Stop For The Whole Family  
To Come Relax, Fish, Hunt, & Enjoy The Outdoors!*

**660-438-5933**

CONVENIENTLY LOCATED NEAR **TRUMAN LAKE**,  
ONLY ONE MILE NORTH OF LONG SHOAL MARINA!

**12049 Hwy 7, Warsaw MO**

[RCAdventureCabins.com](http://RCAdventureCabins.com)

[RandCAventures65355@gmail.com](mailto:RandCAventures65355@gmail.com)



# Baker's Bait & Tackle

**(660) 223-8568**

**For all your fishing needs,**



**stop at Baker's!**



**[www.bakerstackle.com](http://www.bakerstackle.com)**

## **HOURS:**

**Mon-Thurs 6AM-6PM**

**Friday 6AM-8PM**

**Sat-Sun 6AM-5PM**

**209 US-65, Lincoln, MO 65338**



**COSMIC CAFE**  
BREAKFAST LUNCH & COFFEE

**DRIVE THRU!  
FULL BREAKFAST MENU!  
AND AS ALWAYS...  
SPECIALTY COFFEE!**

**Monday-Saturday 7am 3pm  
Breakfast 7-11 • Lunch 11-2 daily  
504 West Main St., Warsaw**

**660-438-6171**

**Electra-Air**

**HEATING & AIR CONDITIONING**

*"Service & Replacement"*

*Residential / Commercial*



**ALCANTARA  
VETERINARY HOSPITAL**  
1252 Commercial Street • Warsaw, Missouri 65355  
**660-438-6493**

[alcantaravethospital.com](http://alcantaravethospital.com)

At Alcantara Veterinary Hospital, we offer a variety of services to care for your pet. If you have any questions or would like more information on how we can care for your pet, please contact us today.

DIAGNOSTICS • EXAMS & CONSULTATIONS  
NUTRITIONAL COUNSELING • SURGERY • VACCINATIONS  
MICROCHIPPING • PREVENTATIVE MEDICINE  
PHARMACY • BOARDING

We believe in treating every patient as if they were our own pet.



# WE'RE HERE



WHEN YOU NEED US

WALK INS WELCOME

**At Bothwell Health Center – Truman Lake, we know how important care and convenience are to you.**

Whether you and your family are visiting the lake this summer, or you live here, choose Bothwell's Warsaw clinic when you need both.

We're the only medical practice in the area with primary and specialty clinicians, as well as on-site X-rays, 3-D mammograms, bone density screenings and lab services so you can get the care you need when you need it.

#### LOCATION AND HOURS

1765 Commercial St., Warsaw  
7 am to 6 pm Monday–Friday



**I've always been able to count on Bothwell. There's no place I'd rather go. 77**



SARAH HASEK, MD



CHELSEA CASTEEL, FNP



JAIME REED, PA-C

TO MAKE AN  
APPOINTMENT, CALL  
**660.438.6800**

  
**Bothwell**<sup>™</sup>  
Health Center – Truman Lake

GET WELL. STAY WELL. BOTHWELL.

[brhc.org](http://brhc.org)





*For Professional Service and Hometown Charm*

## BORING REXALL DRUG

**NEW  
PRODUCT  
ARRIVALS!**

**ATTENTION!**



Now carrying  
Elderberry Concentrate!

Accepting Most Medicare  
D And Third Party Insurance  
Plans. Take Time To Check  
Prices When Choosing A  
Pharmacy, BIG Does Not  
Always Mean Better. No  
Need To Wait For Hours To  
Get A Prescription Filled,  
Stop By Today For Fast,  
Friendly Service!

161 W. Main St.  
PO BOX 278  
Warsaw, MO 65355



Tel: 660-438-5162  
Fax: 660-438-5083

*Save Money At Your Hometown Pharmacy*

**Pharmacist Dana Koll, RPh**

**Store Hours: Monday thru Friday 8 AM to 5:30 PM**

**3D  
Power  
Sports**



**ATV's Starting At  
Only \$550.00!**

**4wheels4all.com  
Cell: 816-807-7957**

**14653 HWY 7  
Warsaw, Missouri**

Lora Anstine Owner/Broker

# ANSTINE



## REALTY & AUCTION

, LLC



# 660-438-7000

1649 Commercial St., #4  
Warsaw, MO 65355

(1½ Blocks North of 7 HWY/Commercial St. Light)



Lisa Firsick  
Sales Associate, GRI  
(660) 223-6928



Debra Anderson  
Sales Associate  
(660) 233-3673



Cathy Wilson  
Sales Associate  
(816) 898-7645



Holly Hatzenbuehler  
Sales Associate  
(660) 723-2291



Tonya Nathan  
Sales Associate  
(660) 281-9361

## Area Marinas

### Long Shoal Marina & Restaurant

Marina & Restaurant • 660-438-2841  
Service Center • 660-438-3030  
Campground • 660-438-2342

Long Shoal Marina and Restaurant is located on Truman Lake just off of 7 Highway, approximately seven miles west of Warsaw at 12878 Steamboat Road. Long Shoal is a full-service marina with overnight and seasonal slips available, campground close by, indoor fish cleaning station, boat ramp, boating supplies, groceries, soda, beer, cocktails, bait, tackle, gas, new line of clothing apparel, pavilion for

tournaments, service center, and a full service floating restaurant feature a new, mouth-watering menu and an outside patio for scenic dining.

The restaurant is open seven days a week during season and serves breakfast daily from 7 AM to 11 AM, lunch daily from 11 AM to 2:30 PM and dinner Friday and Saturday from 4 PM to 9 PM and Sunday from 12 PM to 6 PM. Kids under five eat for free and Saturday nights offer a fantastic "All You Can Eat Spaghetti Dinner!"

### Sterett Creek Marina and The Drunken Minnow Bar & Grill

Marina and Campground • 660-438-2280

Motel • 660-438-2821

Sterett Creek Marina is located on Truman Lake just three miles north of Warsaw on US Highway 65 at 18321 Marina Road. Sterett Creek Marina offers its guests a campground, motel, picnic area, boat ramp, fish cleaning station, freezer storage space, over-night rental slips, gas, boating supplies, bait, tackle, pavilion, and a convenience store. The Drunken Minnow Bar & Grill is open on Friday and Saturday, offering food and beverage on the docks. Sterett Creek Marina is open seven days a week during season Monday through Thursday from 6:30 AM to 6 PM, Friday and Saturday from 6:30 AM until at least 8 PM and on

Sunday until 6 PM.

### White Branch Marina

Marina • 660-438-6344  
White Branch Marina is the only Warsaw marina located on the Lake of the Ozarks at 31092 Stonecrest Rd. They offer gas, two water front decks, bait, tackle, snacks, drinks, boating supplies, boat ramp, overnight rental slips, beer, and apparel.

White Branch Marina and Restaurant is open from 2 PM to 8 PM weekdays (closed on Tuesdays) and from 2 PM to 9 PM on Mondays, Fridays and Saturdays.

### Osage Bluff Marina and Restaurant

Marina and Restaurant • 660-438-2939

Lodge • 660-438-2891

Osage Bluff Marina is located on Truman Lake

just down 83 Highway in Warsaw at 17450 Osage Bluff Road. They offer a floating restaurant, boat ramp, gas, boating supplies, bait, tackle, beer, snacks, drinks, picnic area, campground nearby, and the Osage Bluff Lodge. They offer overnight slips and have their own service center.

The restaurant is open seven days a week during season for breakfast and lunch from 6 AM until 2 PM. The store and marina hours are during season from 6 AM to 7 PM daily.

### Harry S. Truman State Park Marina

Marina and Store • 660-438-2423

Park Office • 660-438-7711

State Park Marina is located on Truman Lake in Harry S. Truman

State Park, just down UU Highway, approximately six miles from Warsaw at 28761 State Park Road. They offer gas, boating supplies, bait, tackle, boat ramp, snacks, beer, drinks, apparel, fish cleaning station, overnight slip rentals, pontoon and fishing boat rentals, campground nearby and picnic areas. The Harry S. Truman State Park Marina follows the operating hours of the state park, from sun up until sun down, seven days a week.



## Harry S. Truman Dam & Visitor Center

Managed by the U.S. Army Corps of Engineers, The Harry S. Truman Dam and Visitor Center offer nature enthusiasts and history buffs alike the experience of a lifetime. The dam and reservoir were built with the purpose of flood control, hydroelectric power production, fish and wildlife management, and recreational use. Truman Reservoir is, in fact, the largest flood control reservoir in the state of Missouri.

The visitor center displays dinosaur bones found around the area when the dam, reservoir, and center were under construction. Inside the center, you will find an observation deck overlooking one of Missouri's most popular recreation lakes, Truman Lake. AN observation deck is lo-

cated outside of the center, around the base, and offers a tremendous view from outdoors. The center is open daily from 9 AM to 5 PM from Memorial Day weekend through Halloween. Admission is free and more information on daily events held can be found by calling 660-438-2216.

Take a hike on one of the numerous trails surrounding the grounds to get a glimpse of some of the area's wildlife while enjoying the magnificent views of the lake. Don't forget to explore the 1800's buildings found on the center's grounds, including the historical Hooper House, Concord Schoolhouse, an 1850's replica of a pioneer homestead, and the Kaysinger General Store, where you can purchase goods from the era.



**THE VISITOR CENTER** on Kaysinger Bluff provides a bird's eye view of the dam and lake area.

# Lake Area Rich in History

Truman Lake is home to numerous historical attractions. Some of these attractions include The Benton County Museum, Harry S. Truman Dam and Visitor Center, Joe Dice Swinging Bridge, Steamboat Landing and Drake Harbor, Historic Main Street District and the story of the Butterfield Stagecoach Route.

## THE BENTON COUNTY MUSEUM

The Benton County Museum is operated by the kind people with the Benton County Historical Society. The museum can be found at 1660 Hilltop Drive, just up the hill from Sonic Drive-In of Warsaw. Visitors will be offered a unique and exciting glimpse into the past

and given a view as to how Warsaw and Benton County came to be. Admission prices at the Benton County Museum are \$3 for adults and \$2 for seniors and children between the ages of 3 and 12. Hours of operation are on Friday, Saturday, and Sunday (April through October) from 10:00 AM to 4:00 PM.

## JOE DICE SWINGING BRIDGE

The Joe Dice Swinging Bridge in Warsaw is a one of a kind and a must-see attraction. Built by Joseph A. Dice, the bridge is over 100 years old and is the only one still standing in the area. In 1999, it was listed on the National Historic Register. The bridge is located parallel

to 7 High-way, and connects the Warsaw's trail system across the Osage Riverwalk, and Warsaw invites you to come and take a stroll around the harbor area. Drake Harbor can accommodate boats from Lake of the Ozarks and gives access from the water to the historic downtown area. A playground, boat ramp, fishing docks, and public rest rooms are also found on the grounds, along with a beautifully constructed amphitheater.

## THE BUTTERFIELD OVERLAND STAGECOACH & MAIL ROUTE

A route that connects Benton County through scenic, back country gravel roads, following in the

wagon tracks of history. For bike packing, day tripping, overnight stays and pure adventure, you will fall in love with this section of the Butterfield Stage Experience. Linking to the Rock Island and Katy Trail in Windsor, the Butterfield Stage Experience Bike packing Route utilizes an existing historical trial to promote

the attributes of an entire rural county, enticing adventure seekers to explore the hidden gems of the area. Each community on the route has its own unique history, with old stone markers showing the way. Cole Camp was motivated to change the name of their city park to the Butterfield Park, and it has become

an important way station for adventurers. Lincoln, known as the town alive on 65, is the hub to the Katy Trail and Rock Island connections. Warsaw is a key component, with a Butterfield Stone marker in their courthouse lawn, and the old stagecoach stop across the street. Get out on the Butterfield and rediscover the pioneer spirit.



**THE BENTON COUNTY MUSEUM** is home to a great collection of the fascinating history of the area.

# Safe Boating is Happy Boating

Watercraft safety is paramount at all times and becomes even more important during the busy summer months. Missouri law has restrictions in place to assure everyone's safety and officers on the water to ensure it is obeyed. Any person operating a motorboat or personal watercraft must be at least 14 years of age unless under the direct, onboard supervision of a parent, guardian, or person 16 years of age or older.

Anyone born after January 1st, 1984, is required to take a boater education course, available online, and receive approval from the Missouri State Highway Patrol. Upon approval, a card will be issued that must be carried with the individual at all times while operating

watercraft. Anyone requiring the card but not carrying it will be fined. Even those not required to take the course can benefit from it. Not only will they become a more educated boater, they may be able to save on boat and PWC insurance. There is no age restriction on taking the course. To take the course, visit [www.boat-ed.com/Missouri](http://www.boat-ed.com/Missouri).

Motorboats and motorized personal watercraft must be titled and permitted to operate on Truman Reservoir and Lake of the Ozarks: see the Missouri Department of Revenue website for details. In order to be titled and permitted, the craft must undergo a safety inspection which includes, but is not limited to, the availability of personal flotation devices and

operational navigation lights. Full details can be found in the handbook, available at [www.boat-ed.com/Missouri](http://www.boat-ed.com/Missouri). Upon satisfactory completion of the safety inspection, a decal will be awarded and affixed by a Highway Patrol trooper behind the registration number of the watercraft.

Some basic rules and courtesies apply to all who wish to enjoy the water, please obey and help keep everyone safe!

### Know your vessel!

The maximum safe weight and number of occupants can be found on the capacity information plate, usually located near the operator's position or on the transom. If the vessel does not have a plate affixed, refer to the owner's manual.

**Encountering other vessels:**

Although no craft has the legal right-of-way such as is law on highways and streets, there are courtesies that every boater should know and honor. It is the responsibility of both operators to avoid collision!

When two craft meet on the water, one is referred to as the "stand-on" vessel and the other is the "give-way" vessel.

If both craft are motorized and meeting head-on, both should give way and pass to the right, or starboard. If two motor craft are crossing, the vessel on the operator's left (port) should give way, while a vessel to the operator's right has the right to stand on. When one craft comes from behind to overtake another, the vessel in front is the stand-on, while the one doing the overtaking needs to give way.

In the case of motorized craft meeting non-motorized craft, or sail boats, the powered craft is always the give-way vessel, except in the rare case of a sail boat overtaking a motorboat: the vessel coming from behind is always the give-way vessel!

The lakes are also popular for kayaks and canoes, so be aware of all the little guys trying to safely enjoy the water too! If your vessel is bigger and faster, you should always give way to the smaller, man-powered craft.

**AND ALWAYS REMEMBER, OPERATING ANY WATERCRAFT WHILE UNDER THE INFLUENCE OF ALCOHOL, DRUGS,**

**OR CONTROLLED SUBSTANCES IS ILLEGAL AND UNSAFE.**

Missouri has zero tolerance for anyone behind the wheel while intoxicated, which means a blood alcohol content of 0.08 or above. Alcohol and watercraft do no mix! This includes wakeboards, water skis, inflatable tube, kayaks, canoes, or other such devices. Operating any watercraft or other such device on the water immediately confers your consent to be tested and refusal to do so can result in arrest. If testing results are positive, you can be arrested, fined, and lose your license.

Be safe, be smart, and HAVE FUN!





## SIS & I - LLC

Beads - Jewelry - Art & More

Vickie S Perks

Owner/ Artist

325 Seminary, Warsaw, MO

660-723-0169

Make It & Take It - Birthday Party - Girls Day Out -  
Beads by the Strand - Findings - Repairs - Classes

# thrivent<sup>®</sup>

Michael J. Bauer, FIC

Financial Associate

Nichols Financial Consulting Group  
michael.bauer@thrivent.com

O: 660-221-7025



120 S Maple  
PO Box 188

Cole Camp, MO 65325

## Saltbox Primitive Woolens

Patty Wallace

Owner

Shop 660-438-6002

Cell 660-723-2101

30148 West Dam Access Road

Warsaw, MO 65355

www.saltboxprimitivewoolens.com



# OLZIE WALLACE

Advanced  
Septic Systems  
Licensed & Insured



## Backhoe

660-723-0374

660-438-2868



JANOME  
AUTHORIZED DEALER

## CITY'S EDGE

Quilt Shop & Sewing Center

On-line Shopping at [www.citysedgestudio.com](http://www.citysedgestudio.com)

In store and Curbside Pick-up available.

*Start them off right!*  
Get the best tools for the best experience!

Give the perfect  
gift of creativity  
with a new  
Janome. We  
carry sewing  
machines for  
beginners thru  
advanced sewers.



- FREE Start up classes and more with every machine purchase
- Edge to Edge Quilting Services - Quick Turnaround
- Quality Fabrics, Patterns, & Notions

Hours Mon - Fri 10a-5p, Sat 9-3p

616 W. MAIN STREET, PO BOX 38

WARSAW, MO 65355

660-438-3177

Visit us on-line at [www.citysedgestudio.com](http://www.citysedgestudio.com)

# R&R BBQ

SUMMER HOURS: MAY - SEPTEMBER  
WEDNESDAY & THURSDAY - 11:00 AM - 8:00 PM  
FRIDAY & SATURDAY - 11:00 AM - 9:00 PM  
SUNDAY 11:00 AM - 7:00 PM



We specialize in BBQ and  
we also do catering!

ONLINE ORDERING AVAILABLE  
[www.rrcustomcooking.com](http://www.rrcustomcooking.com)

10966 HWY 7, Clinton, MO

(816) 945-7722

## Compare our CD Rates

### Bank-issued, FDIC-insured

6-month **2.10** % APY\* Minimum deposit \$1000

1-year **2.85** % APY\* Minimum deposit \$1000

2-year **3.30** % APY\* Minimum deposit \$1000

Call or visit your local financial advisor today.



**Rickie Caswell, AAMS®**

Financial Advisor

1620 Commercial  
Warsaw, MO 65355  
660-438-2642

\* Annual Percentage Yield (APY) effective 06/22/22. CDs offered by Edward Jones are bank-issued and FDIC-insured up to \$250,000 (principal and interest accrued but not yet paid) per depositor, per insured depository institution, for each account ownership category. Please visit [www.fdic.gov](http://www.fdic.gov) or contact your financial advisor for additional information. Subject to availability and price change. CD values are subject to interest rate risk such that when interest rates rise, the prices of CDs can decrease. If CDs are sold prior to maturity, the investor can lose principal value. FDIC insurance does not cover losses in market value. Early withdrawal may not be permitted. Yields quoted are net of all commissions. CDs require the distribution of interest and do not allow interest to compound. CDs offered through Edward Jones are issued by banks and thrifts nationwide. All CDs sold by Edward Jones are registered with the Depository Trust Corp. (DTC).

# The WOOD SHED

**WE SPECIALIZE IN CEDAR LOG SIGNS & CEDAR CUSTOM FURNITURE**

**LOG BEDROOM SUITES • MISSOURI RED CEDAR SIGNS •  
TABLES & CHAIRS • CEDAR CHESTS • COFFEE TABLES  
AND END TABLES • QUALITY GIFTS AND CRAFTS**



**MENNONITE BUILT  
CABINS, SHEDS &  
MINI BARN**



**SUPER  
SALES CENTER  
FOR CAROLINA  
CARPORTS, INC.**



**WE SELL COMMERCIAL BUILDINGS UP TO 60 FT. WIDE**



**Open Monday 10 AM to 5 PM • Thurs-Sat 10 AM to 5 PM**

**Closed Sunday, Tuesday and Wednesday**

**13913 Hwy 7 N • Warsaw, MO 65355 • (660) 438-8705**

**[www.ozarkwoodshed.com](http://www.ozarkwoodshed.com)**

## Historic Downtown District

Although Warsaw has plenty to offer when it comes to life at the lake and every-thing it incorporates, it's also a fantastic town for those who seek one of a kind antiques and handmade crafts. Downtown Warsaw has shops such as; Warsaw Antique Mall, Wooden Wagon, and Baray's Unique Boutique, as well as Bill's Repurpose and Middle Bridge Antiques. Each of these unique shops contains hidden gems

eagerly waiting to be picked out and brought home. One of Warsaw's more prominent antique groups is baseball memorabilia, mainly consisting of Kansas City Royals and St. Louis Cardinals items. The most cherished antiques from this category relate to the Major League Baseball World Series of 1985, where the Royals and Cardinals faced off for the title of MLB Champions, which ended in a seven-game series victory

for the Royals. Along with these baseball collectibles, Warsaw is home to innovative and admirable craft, any of which are handmade from its very own residents. Ranging from self-carved wooden coasters to land-scape paintings as the product of countless amounts of labor, Warsaw indeed offers something unique and appealing for every type of shopper.



**WARSAW'S MAIN STREET** plays host to a wide variety of shops and restaurants, as well as many historic buildings.



**DRAKE HARBOR AND THE TRUMAN DAM** are just a few of the beautiful landscapes that the Warsaw area has to offer.

## Fish Limits & Size Requirements

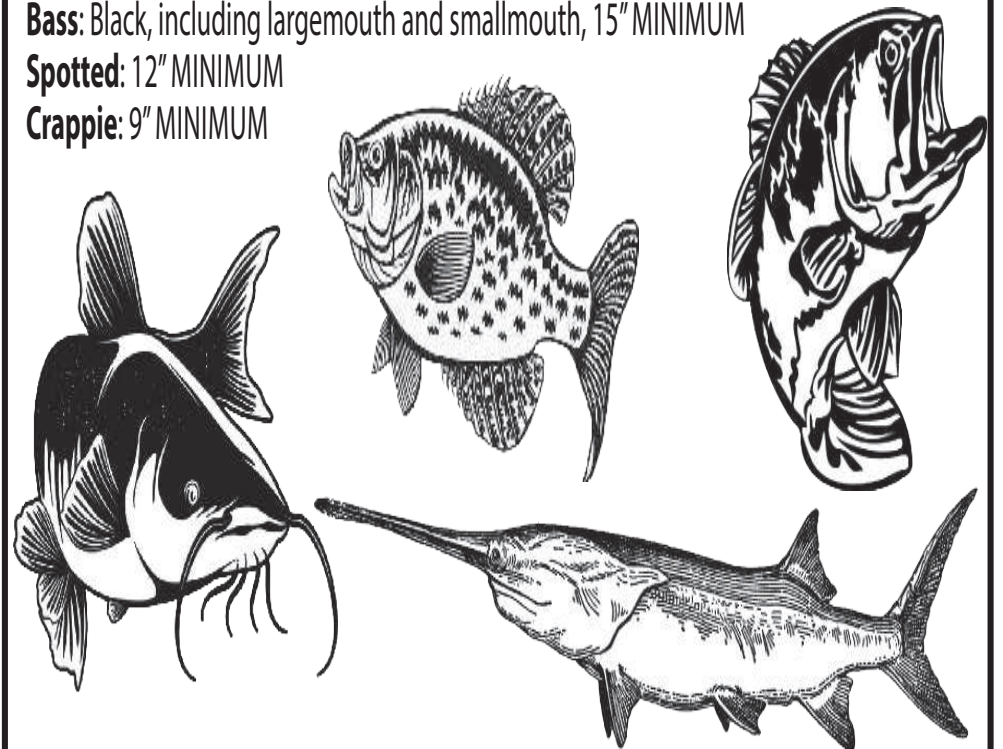
**Crappie** must be at least 9 inches in length, from the tip of the snout to the end of the tail, and no more than 15 can be kept in a day. **Blue catfish** have a slot length restriction, which means they cannot be kept if they fall within the length range. On Truman and its tributaries, this slot is any fish between 26 and 34 inches. Only 10 bluecats can be kept per day, and only 2 of those kept can be over 34". This means you can keep 8-10 blues as long as they are less than 26" long.

**Paddlefish**, on the other hand, must be at least 34 inches long to be kept.

**Bass:** Black, including largemouth and smallmouth, 15" MINIMUM

**Spotted:** 12" MINIMUM

**Crappie:** 9" MINIMUM



**MY BOAT  
ALLOWS ME TO GIVE MY DOG THE LIFE HE DESERVES**



## **SUMMER ON THE WATER**

**IS NOT JUST ABOUT ME. MY DOG, CHARLIE SPENDS HIS DAYS ALONG MY SIDE WATCHING FOR FISH AND SOAKING UP THE SUN. THE CREW AT ANGLER'S PORT MARINE HELPED MAKE THIS HAPPEN.**

--Mark & Mary Beth Vater, Angler's Port Marine Customers

May 2021 Winner  
#anglersportphotochallenge



Your Time on the Water is Valuable  
Visit [anglersportmarine.com](http://anglersportmarine.com) for best selection  
and learn about the Angler's Port Guarantee

**PRICE PER ACRE HAS NEVER BEEN HIGHER  
IF YOU ARE THINKING OF SELLING  
NOW IS THE TIME TO CALL!!**



We Have Been in Business Since 2013 and Continue to Grow in Sales Each and Every Year!

In 2021 We Had 200+ Transactions to the Sale Totals of Almost \$50 Million!

We are So Excited to Move into Our New Office, Located Right Off Hwy 65 & Hwy 52

**If You Are Considering Selling,  
Call Us Today for a Local Agent to Come Visit with You in Person!**



[www.MissouriLandCo.com](http://www.MissouriLandCo.com)

**660-668-4868**

14884 14881 Centerline Ave. • Cole Camp, Mo. 65325





(660) 438-6005



Warsaw, Truman Lake and Western Lake of the Ozark areas. The Campground is semi-wooded, shady, rolling with level sites; lakeside available. From Junction of US 65 & Hwy 7 (North of town), South 1/2 mile on US 65 to Warsaw exit (East Main), West 1/3 mile to cemetery, South 1/10 mile.

807 Gasoline Alley • Warsaw, MO  
74 Sites, 60 Full Hookups, 14 Water & Electric,  
8 Primitive, 11 Pull-Thrus, 1 Bathhouse with  
handicap facilities, 20/30 Amp, 6 50 Amp Sites  
By Lake of the Ozarks & Truman Lake!  
YOUR GET-A-WAY STARTS HERE



**MAIN STREET  
MUTUAL INSURANCE**

Specializing in Auto, Homeowner, Equipment  
Breakdown, and Commercial Insurance



Bonnie Fitzpatrick



Eric Hoke



Bob White

*Main Street Mutual Insurance*

has been providing quality, affordable insurance products to its members for over 140 years.

Our success is measured by our policyholders choosing us because of their belief in our ability to meet or exceed expectations of price, service, and ability. We have a team of agents and staff that are committed to assisting you with all of your home, auto, & commercial insurance needs.

**GET IN TOUCH**

(660-668-2445

206 W. Main Street

Cole Camp, MO 64325

@MainStreetMutualInsuranceInc

mainstreetmutual.com

**Hours:**  
Monday-Friday  
9 am-noon, 1-4:30 pm

# WARSAW

## Health and Rehabilitation Center



### OUR PHYSICIANS:

Dr. Drew Smith

Dr. Mark Snell

Dr. Brendan Bagley

Dr. Amber Campbell

Dr. Herbert Hall

Administrator: Jennifer Ledom

DON: Michelle McNutt

ADON: Dea Thorton

Business: Darla Umlauf

Staff Development:

Shannon Locke

Marketing & Admissions:

Susan Spencer

- Short-Term Rehab
- Long-Term Care
- Memory Care Unit
  - Respite Care
- Speech Therapy
- Physical Therapy
- Occupational Therapy



1609 Sunchase Drive • Warsaw, MO 65355

**(660) 438-2970**

Northport Health Services of Missouri, LLC • dba Warsaw Health and Rehabilitation Center

# HICKMAN'S SMOKEHOUSE



Featuring taste-tempting  
smoked meat sandwiches,  
sides and meat by the pound!

**660-668-2092**

**You Can't Beat  
Hickman's Meat!** 310 East Main  
Cole Camp, MO



**VISIT US!**

310 E Main St, Cole Camp,  
MO 65325



sconeladybakery@gmail.com

**(360) 320-9072**

www.thesconeladybakery.com

# T & K

Automotive LLC

Sales & Service

660-438-3509

**Domestic  
& Imports**  
New & Used Tires  
Batteries  
Oil Change  
Tune-Up  
Brakes

421 E. Main Street, Warsaw MO



Julie Brewster - Agent  
(660) 438-9037  
Julie.Brewster@mofb.com



We've got Missouri covered.

AUTO HOME LIFE BUSINESS



# Pecan Grove

CAMPGROUND & RV PARK



### CAMPSITES

Full Hook-ups 30 & 50 amp  
Shower House-171 sites  
Pool/Hot tub/Laundry  
Boat Storage

### LOG CABINS

Built-in rustic style with  
antique claw foot bathtubs  
Open cabins with loft  
sleeps up to 6 people  
Peaceful retreat

YOUR "HOME AWAY  
FROM HOME."

Daily, weekly & yearly rates

(660) 438-7688

30249 N. Dam Access Rd. Warsaw, MO

Located on Dam Access Rd.

About 1 mile West of Warsaw off Hwy 7

# WINE, ANTIQUES & MORE

301 E. Main St.

Cole Camp, MO

660-668-0049

# EAT - DRINK - RELAX

# Holly's

# Happy Hounds

29398 Benton House Ave. Warsaw, MO

Monday-Friday



(660) 438-3441

**OWNERS: MIKE & SHAWNNA BARKER**  
**417-208-9435 / 660-924-6069**  
**LICENSED & INSURED**  
**"SO MUCH MORE"**  
**AND**  
**ROOFING, SIDING**  
**INTERIOR/EXTERIOR PAINTING**  
**RESIDENTIAL AND COMMERCIAL**  
**ROLLING PERFECTION**



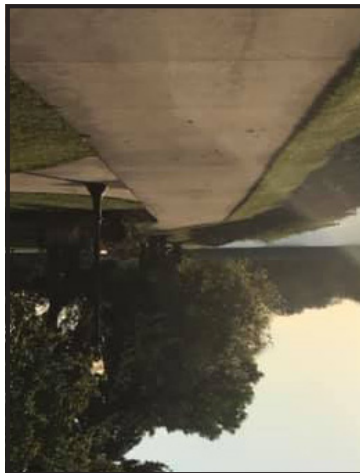

**Free Estimates**

**Proudly Family Owned  
and Operated for 30 Years!**

**28985 Commercial Ave.**

**Warsaw, Missouri**

**660-438-7462**



**1815 EAST MAIN STREET -- DOWN IN THE VALLEY - OLD HWY. 65**  
**OWNERS: CHARLES & CAROLYN EDGAR**  
**OVER 30 YRS. EXPERIENCE**  
**CALL FOR FREE ESTIMATE**

**660-438-9388**

**WARSAW, MISSOURI**

**C&C'S VALLEY TRANSMISSION**

**GET YOUR SHIFT TOGETHER**




# Red, White, Blue & **BOOM!**



WHEN: *Friday, July 1st, 2022*

WHERE: *32 SE Hwy AA, Clinton*

**LIVE MUSIC**

from **6:00-9:00 PM**

performed by *Rockwood Duo*

**HUGE FIREWORK DISPLAY**

at **9:00 PM** built by JD Fireworks

**SKYDIVERS TO JUMP WITH THE**

**AMERICAN FLAG AT 7:30!!!**

Presented by **LORA ANSTINE** - All **FREE** to the public

# COUNTRY —CHARM—

OFFERING CUSTOM DECOR  APPAREL

109 E. MAIN ST. WARSAW, MO

**NEIGHBORS  
COUNTRY  
STORE**

Bait • Tackle •  
Ice • Groceries  
• Eats

Shad, Skipjack, Minnows

BBQ, Snacks, Drinks,  
Tackle, Rods, Reels,  
and so much more!

30093 W Dam Access Road,  
Warsaw, MO 65355  
660-223-3250 • 660-223-3009



## WESTERN LIFESTYLE

Home Decor & Boutique • Lawn & Garden

Ranch Raised Angus Beef

(HORMONE - ANTIBIOTIC FREE)

OPEN FRIDAY-SATURDAY 11:00-5:00

SUNDAY 12:00-4:00

07 NORTH HWY 65 • LINCOLN, MO 65338



**455 North Highway 65  
Lincoln, MO 65338**

**Sun-Thurs: 11AM-9PM**

**Fri-Sat: 11AM-10PM**

**660-547-0315**

# The Landing Bistro & Lounge

## HOURS

Mon-Thurs: 11-9

Fri & Sat: 11-10

**660-438-2732**

**305 W Main  
Warsaw, MO**



[www.thelandingwarsaw.com](http://www.thelandingwarsaw.com)



**RE/MAX®**

**NEW LOCATION!**  
**805 Kennedy Dr, Warsaw**



**Shelley  
Hare**



**Danielle  
Baker**

**(660) 438-7100**



**Let us help you find your  
DREAM HOME!**

# H&C

## PLUMBING & ELECTRICAL

**SERVICE CALLS  
COMMERCIAL & RESIDENTIAL  
DRAIN CLEANING**

[www.warsawplumber.com](http://www.warsawplumber.com)

EMAIL: [HandC.Plumbing@yahoo.com](mailto:HandC.Plumbing@yahoo.com)



**(660) 428-2371**

HEATH CUNNINGHAM, OWNER

**924 E MAIN STREET, WARSAW, MO**



**670 SE 803rd Rd Clinton, MO 64735**

### **Bucksaw Resort & Marina**

is proud to be the only full service resort & marina on Truman Lake.

We provide all the components needed for a great weekend getaway or vacation.

Lodging options include a 40 room lodge, 6 quaint cabins with lake view, our floating kitchenettes, basic sleeping rooms and our 100 full hook up RV sites.



### **Marina Store**

Sun – Wed: 6am – 5pm

Thur – Sat: 6am – 8pm

### **Restaurant**

Sun – Wed: 6am – 2pm

Thur – Sat: 6am – 8pm

**[www.bucksaw.com](http://www.bucksaw.com) / (660) 477-3900**