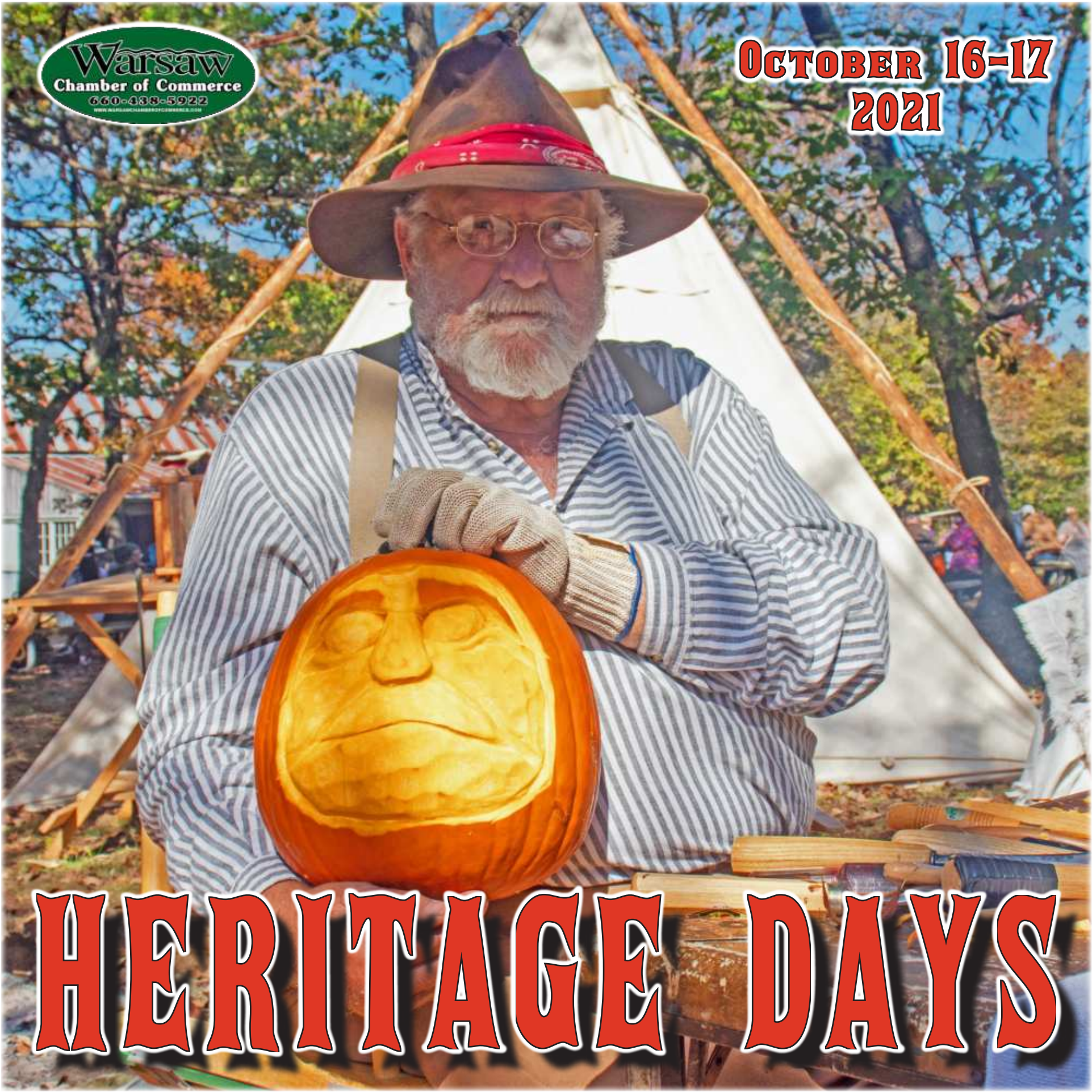




**OCTOBER 16-17
2021**



HERITAGE DAYS



R-BAR
& GRILL

FOOD, DRINKS & FUN

(660) 438-RBAR

STEAK ★ BURGERS

SEAFOOD ★ PASTA

Home of the famous Bacon Bloody Mary

Local Beers on Tap

31390 WARSAW AVENUE: 65 HWY - TAKE THE WHITE BRANCH EXIT

Welcome to Heritage Days!

The Warsaw Chamber of Commerce, along with a small army of volunteers, presents the 40th annual Warsaw Heritage Days. Celebrating our history and heritage on the Osage River, the biggest event in Benton County invites over 200 vendors of handmade crafts to the beautiful venue of Drake Harbor.

At Heritage Days you can enjoy great food

from a variety of vendors and find unique items for your home or even Christmas gifts. Spend as much time as you need pursuing all the hand-made goodies and plan for your next outdoor adventure. Welcome to Heritage Days!

The festival normally takes place in two locations: Drake Harbor and a living history demonstration on Kaysinger Bluff.



A Friendly Reminder:

Trash receptacles are readily available and placed for your convenience. Please help us keep Drake Harbor clean and pristine!

Cow Pattie
RESTAURANT

OPEN ALL WEEK!

Monday-Saturday: 6-2

Sunday: 6-1

**Breakfast, Lunch,
Coffee, Comfort Food**

(660) 438-6046

606 Main St, Warsaw, MO



ADVANTAGE REAL ESTATE

(660) 438-0070

1876 Commercial, North Town Mall
Warsaw, MO

www.advantageland.info



Pam Grobe
660-525-0740
WWW.PAMATTHELAKE.COM



Mary Shinn
660-221-7603



LeeAnn Petree
816-838-2534



NATIONWIDE EXPOSURE FOR LISTINGS



Warsaw: An Area Rich In Heritage

Truman Lake is home to numerous historical attractions. Some of these attractions include The Benton County Museum, Harry S. Truman Dam and Visitor Center, Joe Dice Swinging Bridge, Steamboat Landing and Drake Harbor, Historic Main Street District and the story of the Butterfield Stagecoach Route.

The Benton County Museum is operated by the kind people with the Benton County Historical Society. The museum can be found at 1660 Hilltop Drive, just up the hill from Sonic Drive-In of Warsaw. Visitors will be offered a unique and exciting glimpse into the past and given a view as to how Warsaw and Benton County came to be. Admission prices at the Benton County Museum are \$3 for adults and \$2 for seniors and children between the ages of 3 and 12. Hours of operation are Friday, Saturday, and Sunday (April through October) from 10:00 AM to 4:00 PM.

The Joe Dice Swinging Bridge in Warsaw is a one of a kind and a must-see attraction. Built by Joseph A. Dice, the bridge is over 100 years old and is the only one still standing in the area. In 1999, it was listed on the National Historic Register. The bridge is located parallel to 7 Highway, and connects the Warsaw trail system across the Osage River. Warsaw invites you to come and take a stroll around the harbor area. Drake Harbor can accommodate boats from Lake of the Ozarks and gives access from the water to the historic down-town area. A playground, boat ramp, fishing docks, and public rest rooms are also found on the grounds, along with a beautifully constructed amphitheater.

A route that connects Benton County through scenic, back country gravel roads, following in the wagon tracks of history. For bike packing, day tripping, overnight stays and pure adventure, you will fall in love with this section of the Butterfield Stage Experience. Linking to the Rock Island and Katy Trail in Windsor, the Butterfield Stage Experience Bike Route utilizes an existing historical trail to promote the attributes of an entire rural county, enticing adventure seekers to explore the hidden gems of the area. Each community on the route has it's own unique history, with old stone markers showing the way. Cole Camp was motivated to change the name of their city park to the Butterfield Park, and it has become an important way station for adventurers. Lincoln, known as the "Town Alive on 65", is the hub to the Katy Trail and Rock Island connections. Warsaw is a key component, with a Butterfield Stone marker in their courthouse lawn, and the old stagecoach stop across the street. Get out on the Butterfield and rediscover the pioneer spirit.

State Fair Community College

Classes available in Boonville,
Clinton, Eldon, Lake of the
Ozarks, Sedalia, Warsaw and
Whiteman Air Force Base.

It's about community!

Visit www.sfccmo.edu for more.



**THANK YOU TO OUR
HERITAGE DAYS SPONSORS!**

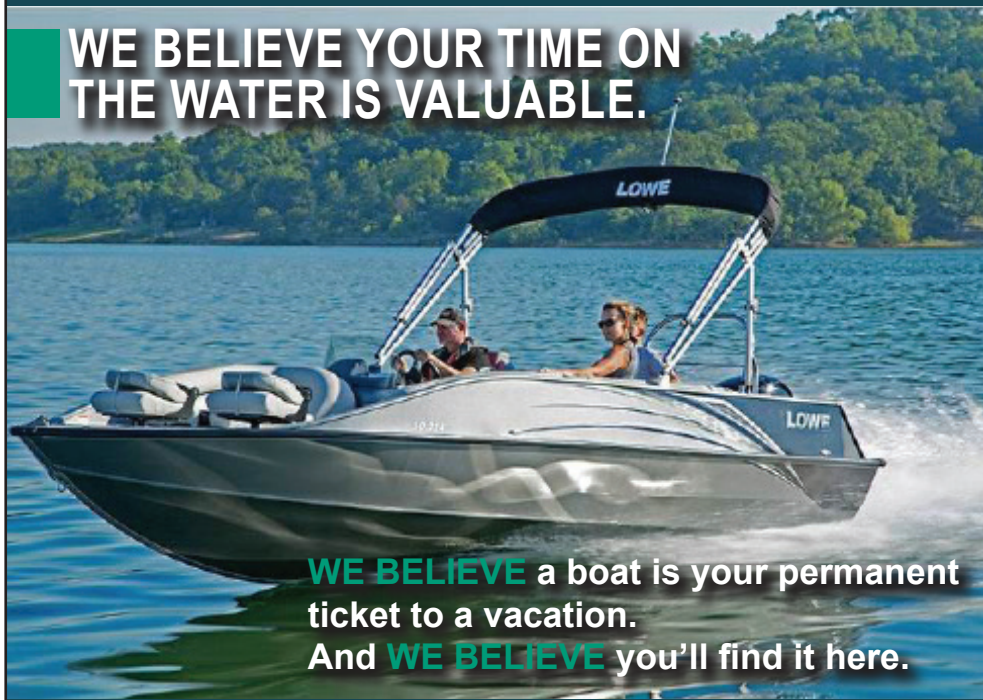


ANGLER'S PORT MARINE

660-438-4600 www.AnglersPortMarine.com
13979 Highway 7 Warsaw, MO 65355



**WE BELIEVE YOUR TIME ON
THE WATER IS VALUABLE.**



If your search for a new boat hasn't been as relaxing and as fruitful as you'd hoped, come visit us at Angler's Port Marine. We have the largest selection of Caymas, Lowe, Phoenix and Mercury in the midwest. We'll help you find the relaxation you've been looking for.

Warsaw, MO | (660) 438-4600
AnglersPortMarine.com
Dons@AnglersPortMarine.com

Halloween Hoopla Coming Soon

Shortly after the Heritage Days festival wraps up, Warsaw swings back into fun-filled action for the annual Halloween Hoopla on Main Street!

Hosted by the Chamber of Commerce on October 29th, from 6:00-8:00 PM, local businesses all pitch in and decorate a space along Main Street to hand out

treats, (and maybe even some tricks!) in a safe, family-friendly environment. Perfect for kids and grown-ups of all ages, be sure to get your costume on and join us for some spooktacular fun!

Pictures will be taken in front of the Community Building.



This Guide is Proudly Provided by the
Warsaw Area Chamber of Commerce
660-438-5922
www.warsawchamberofcommerce.com
Produced and Printed by
The Benton County Enterprise
660-438-6312
www.bentoncountyperprise.com

6 | HERITAGE DAYS 2021

Hal's Pottery & Art Works

Hal Russell is among the many artists and craftspeople who will be displaying and selling their wares at Heritage Days.

All pottery designs are thrown on the wheel or handmade with mid-fire stoneware and porcelain clay. The artwork pieces, like most things, are not perfect. They are expressions of realism and fantasy. The artist's ideas come from his travels through life.

Hal will have examples of his art at Heritage Days, be sure and check it out!



TRUMAN LAKE DENTAL

FULL SERVICE FAMILY DENTISTRY

Dr. Teresa Hills

**1631 Commercial Street
Warsaw, MO 65355**

Office: 660.438.5139

Fax: 660.438.8649

trumanlakedental@gmail.com

Experienced • Knowledgeable • Confidential

TRACEYSPRY & ASSOCIATES

certified public accountants, pc

Tax Planning & Preparation

Individuals • Partnerships • LLC's
Corporations • Farms • Businesses
Accounting • Payroll • Open All Year

FREE ELECTRONIC FILING
when we prepare your tax returns!



The CPA. Never Underestimate The Value.®

**304 West Main
Warsaw, MO 65355
660-438-7992**

**821 Thompson Boulevard
Sedalia, MO 65301
660-829-5212**

www.tsprycpa.com • tracey@tsprycpa.com

Farmers Mutual Protective Assn.

Insuring Farms - Homes - Liability

(660) 547-2323

Fax: 660-547-2806

E-mail: fmpa_cathy@embarqmail.com

Agent: Cathy Burton

445 N. Hwy 65 - P.O. Box 11

Lincoln, MO 65338

**Business Hours:
Monday to Friday
9 to 12 - 1 to 4**





WE'VE GOT TIRES!
CAR • TRUCK • LAWN MOWER • TRACTOR

WE DO IT ALL!

**TIRES • LUBE • EXHAUST
ALIGNMENTS • BRAKES**

Firestone



YOKOHAMA



901 E. Main | Warsaw, MO | 438-3100

Beth's
OSAGE MINI-MART

**915 E. Main St.
Warsaw, MO
660-438-9575**



OFFICIAL BANK OF

Your Life

SAY GOODBYE TO ATM FEES.

Say hello to making the most out of your savings with AutoSave, and a mobile app that you'll love.

equitybank.com/your-life

1601 Commercial

(660) 438-4388
(660) 438-4388



EQUITY BANK

Member FDIC



Community means everything.

Suzie Brodersen, Agent
1872 Commercial Street
Warsaw, MO 65355
Bus: 660-438-7472
www.warsawmoinsurance.com

**That's why I'm proud to be here to
help life go right™ -
and to support Heritage Days.**

**If there's anything you need,
call me.**



P097313.1

State Farm, Home Office, Bloomington, IL

WE'RE HERE



WHEN YOU NEED US

WALK INS WELCOME

At Bothwell Health Center – Truman Lake, we know how important care and convenience are to you.

Whether you or your family needs an annual checkup, help with an illness or injury or on-site diagnostic services, choose Bothwell's Warsaw clinic when you need both.

We're the only medical practice in the area with primary and specialty providers, as well as on-site X-rays, CT scans, mammograms (3D technology coming in October), bone density screenings and lab services so you can get the care you need when you need it.

LOCATION AND HOURS

1765 Commercial St., Warsaw
7 am to 6 pm Monday–Friday



**I've always been able to count on Bothwell.
There's no place I'd rather go. 77**



TO MAKE AN APPOINTMENT, CALL 660.438.6800



Bothwell[™]
Health Center – Truman Lake

GET WELL. STAY WELL. BOTHWELL.

brhc.org

YOUR SOURCE FOR BUILDING SUPPLIES



Check Out
the Color
Visualizer on
our website
under the
Buildings tab!



*We carry a full line
of Metal roofing,
fasteners & trims.*

*We also offer
complete building
packages.*

*Give us a call or
stop by today!*

**Free Delivery
within
20 miles.**

**CALL FOR
CURRENT
METAL
PRICING!**

Textured Metal

Lifetime Metal

40 Year Metal

Liner Panel

**Serving
Central
Missouri**

**19894 McDaniel Rd
Warsaw, MO**

**Golden
Rule**

*"Your Project,
Our Priority"*

Metal Roofing, Lumber & Building Supplies

660-547-0223 www.goldenruleco.biz

CHRISTMAS ON THE HARBOR- A SMALL TOWN CELEBRATION

The City of Warsaw and the Warsaw Area Chamber of Commerce team up for the season to make Drake Harbor and Main Street shine with Christmas spirit. Thousands of lights and the shining Christmas displays make a drive through Drake Harbor a sight to remember.

With Main street flanked by beautiful trees

wrapped in lights, the parade right down the middle is something to be enjoyed by all.

The Christmas Cantata, performed by a consortium of churches from the area, is an incredible traditional Christmas tribute that will take place Community building.

Santa will be present to take children's requests in Drake Harbor, and a hay ride down



beautifully decorated Main Street is fun for the whole family. There's no place like Warsaw for some great memories, so don't forget your camera for family pictures!



T-SHIRTS THAT SOAR Offering Free Delivery To Clinton!

**T-Shirts,
Banners,
Signs,
So Much More!**

Call Us: (660) 723-0550
birdmanapparel@hotmail.com
Visit **birdmanapparel.com**

107 East Main Street
Warsaw, MO 65355
Monday-Friday 9:00 AM - 3:00 PM

12 | HERITAGE DAYS 2021

Warsaw Works Hard to Maintain History

Antique and unique shops throughout the Downtown / Main Street area invite shoppers inside to discover bargains and collectibles reminiscent of Warsaw's historic past. In 1999, Warsaw was the Missouri Main Street State Award winner for facade restoration. In 2001, the City of Warsaw started a major infrastructure improvement project in the downtown

that replaced watermains, sidewalks, and added special landscaping. This project also installed replicate early street lighting that is nearly identical to the original lights in early 1900 Warsaw. The project won the State of Missouri 2002 Excellence in Redevelopment Award for Public Improvements.



i'm lovin' it™

660-438-7612

Hwy 65 & Dam Access Road Warsaw, MO



**413 E MAIN
WARSAW MO
660-438-2186**

**BIKES, KAYAKS
& PADDLEBOARDS**



**Rentals
Tours
Sales**



**SNACKS, GEAR,
MERCH, & MORE**

**Prices and Reservations online at
WarsawAdventures.com**

**WE ARE A LAND REALTY COMPANY
SPECIALIZING IN SALES OF AGRICULTURAL
FARMS, CATTLE FARMS RECREATIONAL/
HOBBY FARMS & HUNTING PROPERTIES!**

*Let Our Nationwide Marketing Work For You!
Your Land Will Be Listed On All Major Land Realty Companies.
Land & Farm, Farm Flip, Realtor.com, Land Broker, Lands of
America, Zillow and My State MLS Just To Name A Few!*



14981 CENTERLINE AVE. COLE CAMP, Mo. 65325
WWW.MISSOURILANDCO.COM
660-668-4868 OR 844-974-1850

6186075

MAIN STREET

Spirits

DRIVE-THRU

**Package liquor Store
with Drive-Thru**



Open 10 AM Daily

**1027 E. Main • Warsaw, MO
660-438-2323**

Warsaw Trail System: Outdoor Fun for the Whole Family

While visiting Warsaw and enjoying the Heritage Days festivities, you can also make use of the beautiful trail system to enjoy the fresh fall air and changing foliage. Designed with a commitment to allow all users to enjoy the outdoors, the Riverfront Trails are wheelchair accessible and excellent for parents with strollers. Four-legged family members are welcome as long as they are leashed.

Each trail begins with a trailhead, the perfect spot to unload bicycles, wheelchairs, and anything else you want to take with you. Trash receptacles are provided, so please remember to leave nothing behind but footprints!



Deer tracks



Armadillo tracks

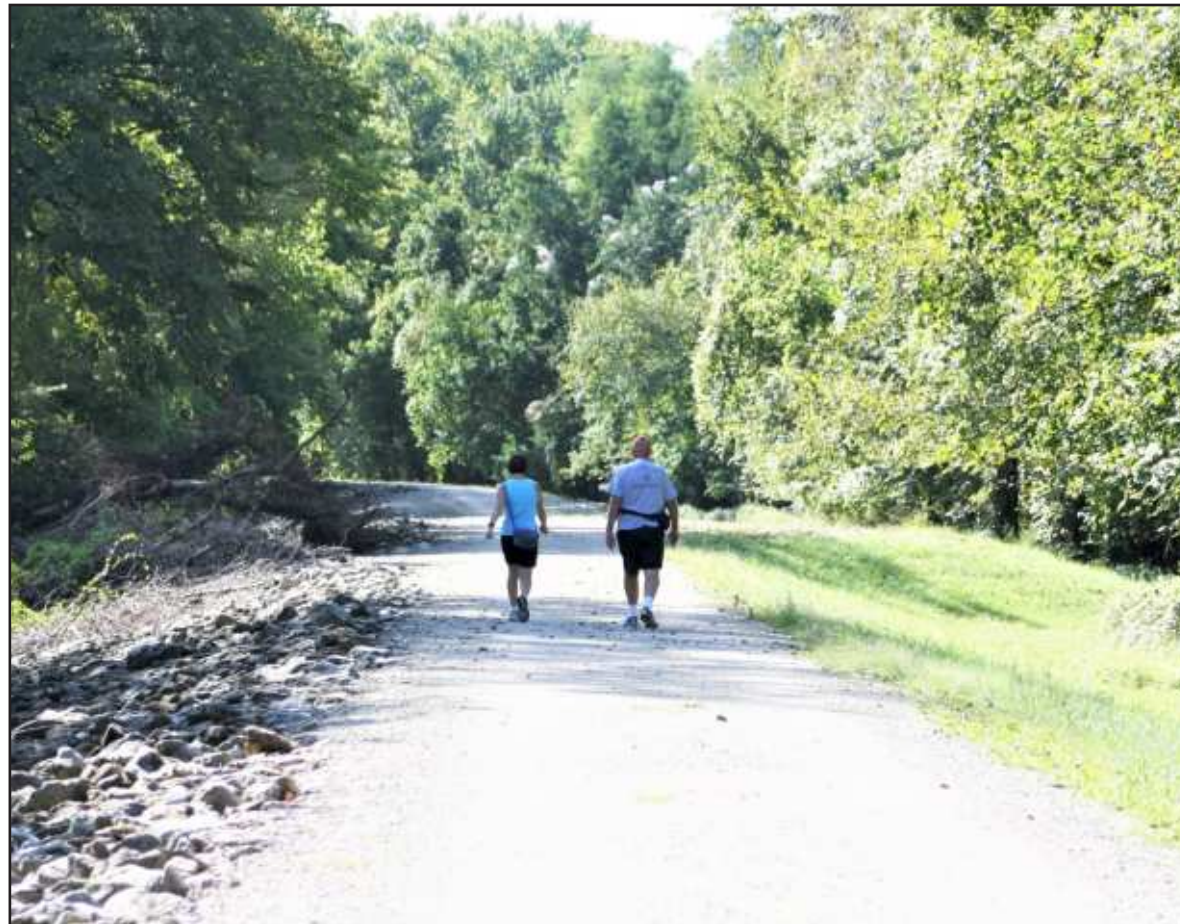


Raccoon tracks

Human tracks



Goose tracks



Fajen

Insurance Agency LLC

Rick Fajen, Agent

HOME • AUTO • LIFE

FARM • LIABILITY • HEALTH

BUSINESS • WORKMANS COMP

601 Commercial Street, Suite #1

Warsaw, MO 65355

660-438-3800

rfajen@fajenins.com

H&C

PLUMBING & ELECTRICAL

(660) 428-2371

COMPLETE PLUMBING & ELECTRICAL SERVICE

24 HOUR SERVICE CALLS
COMMERCIAL & RESIDENTIAL
DRAIN CLEANING

HEATH CUNNINGHAM, OWNER



WARSAW, MO

*Located 1/4 mile west of Truman Dam in the Shawnee Bend Recreation Area
This beautiful course features some of the most scenic views found on Truman Lake*



Call for more information

660-438-6115

Golf@welcometowarsaw.com

www.shawneebendgolf.com

HERITAGE DAYS 2021 | 15

Drake Harbor: Recreational Haven

Drake Harbor was named after long-time resident and Mayor of Warsaw, Gordon Howard Drake. It is part of the Corps of Engineers leased-property that the City acquired after Truman Dam was built.

Drake Harbor and Recreation Area is located on the Osage River arm of Lake of the Ozarks, just one block off of downtown Main Street, at the intersection of Harrison and Benton Street.

Drake Harbor is home to a playground, horseshoe pits, beautiful picnic areas along the water, access to fishing areas, boat ramps, boat slips, and the gorgeous Osage Amphitheater overlooking the water that plays host to many weddings & musical events.

Drake Harbor also is home to Heritage Days events in the fall and during the Christmas season you will find Warsaw's own winter wonderland at Christmas on the Harbor, with an amazing array of spectacular light displays!

The Osage Amphitheater is available for public rentals. Boat Slips (8) are available on a first come first serve basis.



A VIEW OF DRAKE HARBOR IN 1997, PRIOR TO ITS REJUVENATION AS A RECREATIONAL AREA.



DRAKE HARBOR HAS BECOME A SPOT TO RELISH VISITING!



Youth Mountain Bikers Rock

Smiles for miles and more kids on bikes! For the last ten weeks this has been happening at Truman Lake Mountain Bike Park in Warsaw. Riders ranging from 2nd grade to high school gather on Monday evenings to practice their skills, hang out with like-minded teammates, and ride the trails together.

The Benton County Rockers is officially a NICA (National Interscholastic Cycling Association) composite team, which means riders from all over Benton county are welcome to join. The Truman Lake Adventure Club hosts the Benton County Rockers, enabling the team to welcome riders of all ages, not just the NICA age group of middle and high school. This was the inaugural year for NICA in Missouri and 245 middle and high school aged student athletes were set to compete in a five-race series at venues all over the state. Warsaw was picked for a stop on the 2020 race tour and has already secured a spot for the 2021 season

“We have had a great time getting prepared for the season,” said Mac Vorce, head coach of the Benton County Rock-

ers. “The skills they have learned these past few weeks keep them very safe and they are becoming fit riders.” Added Vorce.

Warsaw’s trail system has produced many State Champions, including Benton County Rocker Joe Vorce, who was set to make his NICA debut as a freshman varsity rider. Though the NICA races were canceled for 2020, he looks forward to 2021, while being a mentor for the younger riders.

The mountain bike park is also a desti-

nation for hiking, and it complements Warsaw’s trail system by offering the only off-road hiking and biking experience in Benton County. The trails are maintained by the City of Warsaw and Truman Lake Adventure Club volunteers. The Benton County Rockers are just getting started in 2020, and it will be a fantastic adventure to watch these kids grow up utilizing Warsaw’s award-winning trail system.



SG
STEVE'S

GUTTERING

660-438-6381

WWW.STEVESGUTTERING.COM

Dedicated to Providing You Our Golden Standard of *Care*

Top-Rated Providers



Highly trained,
friendly medical experts.

Personalized Care You Need



Full range of services
and specialty care.

Conveniently Located Facilities



High tech facilities
close to you.



**Golden
Valley
Memorial**
HEALTHCARE

gvmh.org | [@chooseGVMH](https://www.instagram.com/chooseGVMH)

Clinton | Osceola | Warsaw | Windsor

660.890.7300

WARSAW: THEN AND NOW

1719: Home to the Delaware, Shawnee, Kickapoo, Sac and Fox, but largely dominated by the Osage Indians. Pioneers begin to settle.

1831: Lewis Bledsoe builds the first ferry across the Osage River, enabling a boom in travel and freighting.

1835: Benton County is created and named for Thomas Hart Benton, Unites States Senator.

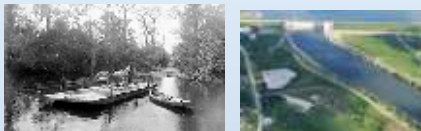
1837: The first Riverboats travel the Osage, stopping in Warsaw to deliver manufactured items needed by settlers, and picking up the raw goods harvested from the wilderness. The steamboat era doesn't last long, as they carried their own demise in the form of railroad building materials.

1843: The area is booming and the City of Warsaw is officially incorporated. While the story behind its name has been lost to history, it is believed that the town was named after Warsaw, Poland, in honor of Polish General Tadeusz Kosciuszko.

1857: The Mechanic's Bank of St. Louis is built and operated until 1861, when General Fremont's troops devastate the town. In 1903 it is remodeled into a jail and is still in use today.

1858-1861: The Butterfield Overland Mail Route made daily stops at what is now Reser's Funeral Home.

1861-1865: The Civil War rages, Warsaw is demolished and burned.



Bledsoe Ferry

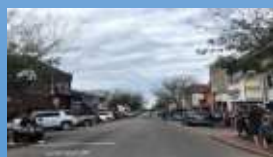


Warsaw has long been a waypoint for travel and transportation



The Butterfield Overland Mail & Stage Route

Main Street



Experienced • Knowledgeable • Confidential

TRACEYSPRY & ASSOCIATES

certified public accountants, pc

Tax Planning & Preparation

Individuals • Partnerships • LLC's
Corporations • Farms • Businesses
Accounting • Payroll • Open All Year

FREE ELECTRONIC FILING

when we prepare your tax returns!



The CPA. Never Underestimate The Value.®

304 West Main
Warsaw, MO 65355
660-438-7992

821 Thompson Boulevard
Sedalia, MO 65301
660-829-5212

www.tsprycpa.com • tracey@tsprycpa.com

Charley's Buffet

23785 HIGHWAY B, LINCOLN

LOCATED 10 MILES SOUTH OF COLE CAMP
ON HIGHWAY B IN THE BIG BROWN BUILDING

"One Of The
12 Greatest All-You-
Can-Eat Buffets in
America." According to
TABÉLog.us.com.



Open Friday and Saturday evenings only
4:30 - 8:30 PM.

Closed December, January, and February
for the winter season. We reopen the first
weekend in March.

Family Owned Since 1997. Dining Worth The Drive!

23785 Highway B Lincoln Missouri • 660-668-3806

Don't Miss Main Street!



Main Street In Warsaw Is A Must-See

Heritage Days brings in over 200 craftspeople and artisans to Drake Harbor each year, but don't overlook all the wonderful shops along Main Street that are open year-round. Antiques and col-

lectibles, gifts, and more can be found amongst the 18 shops along the 3 miles of Main street. Each store offers up their own unique style. Some stores make you feel like you stepped back in time and others are the antiques of the future. Make your Heritage Days even better by stopping in at any of these fine places. Many new shops have opened in the past year, making Main Street even more of a must-see!

After a big day of shopping, food is a must, and Warsaw has many great places that will fill you up at a good price. From good old home cooking to a more unique menu selection, you will be able to find food you and your family can agree on.

Look for several evening entertainment opportunities, including live music and some of the best karaoke around. While you're here, get out and explore Warsaw and see all the great places Warsaw has to offer!



14 PASSENGER BUS
\$80 PER HOUR (3 HR MIN.)
\$75 PER HOUR (6 HR MIN.)
CALL FOR CUSTOM RATES

Winery Trips
Bachelor/Bachelorette Parties
Anniversaries/Birthdays
Proms/Dances
Weddings/Proposals
Night on the Town

(660) 723-6052



DEER REST

← CAMPGROUND →

(660) 438-6005



Warsaw, Truman Lake and Western Lake of the Ozark areas. The Campground is semi-wooded, shady, rolling with level sites; lakeside available. From Junction of US 65 & Hwy 7 (North of town), South 1/2 mile on US 65 to Warsaw exit (East Main), West 1/3 mile to cemetery, South 1/10 mile.

807 Gasoline Alley • Warsaw, MO

28 Sites, 14 Full Hookups, 14 Water & Electric,
4 Primitive, 7 Pull-Thrus, 1 Bathhouse with
handicap facilities, 20/30 Amp, 6 50 Amp Sites
By Lake of the Ozarks & Truman Lake!
YOUR GET-A-WAY STARTS HERE

20 | HERITAGE DAYS 2021

Wet, Wild, Wonderful Warsaw!

Outdoor adventure has long been Warsaw's heritage, and the opportunities for fishing, hunting, and lake life family fun abound. Be sure to visit the Lost Valley Fish Hatchery, where they produce and distribute fishing dreams. The Harry S. Truman Overlook gives a sweeping view of Truman Lake and Truman Dam, with helpful volunteers to direct visitors and a unique portrait of the history of the area. Boat and kayak rentals are available at many different marinas around the lake, or bring your own and use one of the many boat launches available to the public.

Drake Harbor and the award-winning Warsaw Riverfront Trails take advantage of the gorgeous scenery of the Osage River and all the wildlife that inhabit it. Walk, run, or bike for 23 miles along the river. These trails are linked by the Joe Dice Swinging Bridge, which spans the Osage River and is one of the last bridges of its kind. If off road adventure is what you seek, it awaits at Truman Lake Mountain Bike and Hiking Park, Shawnee Bluff Trail, and the Thibaut Trail out of Sterrett Creek. Warsaw is host to the State

Championship Mountain Bike Race, and the single track is some of the best in the state. These trails have Truman Lake as a backdrop, and lead to secluded swimming holes and miles of smiles.

Along historic Main Street you'll find an abundance of unique shopping, from old time antique malls to modern day boutiques, and restaurants serving delicious food sure to satisfy. Main Street has been revamped to resemble the streets of old, with replica street lamps and brick paver sidewalks. Drake Harbor and Main Street are also used as festival venues throughout the year, from summer celebrations like Jubilee Days and the Junk Festival, through fall to Heritage Days, and don't miss Christmas at the Harbor.

Whatever your passion, from outdoor recreations to wining and dining, find it in Warsaw Missouri.

Feel Free to Have Fun!



WEAVER'S



EST. 1972

BODY SHOP LLC.

American & Foreign Insurance Work Welcome

**750 E. Main St
Warsaw, MO
660-438-6717**

Mills & Sons

INSURANCE

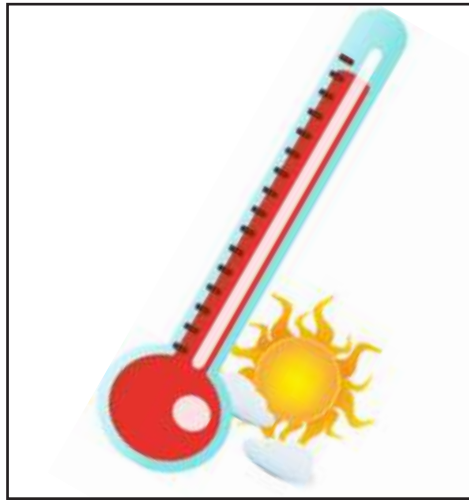
— SINCE 1869 —

**Mike Murray Agency
403 Van Buren
Warsaw, MO 65355
660-438-7379
millsinsurance.com**



BECAUSE LIFE HAPPENS.

Insurance for your home, auto, business, life, health, & more



FUN FACT:

- Warsaw holds the state record for the low temperature of -40 degrees on February 13, 1905.

- Warsaw holds the state record for the high temperature of 118 degrees on July 14, 1954.



RED WING COFFEE & ROASTERY

We Roast Our Coffee Beans in House!
Special Blends Available!

Homemade Pastries ~ Soup of the Day!
Limited Breakfast & Lunch Items

Farmhouse Candles & Fresh Whole Bean
or Ground Coffee Packages

Monday - Friday • 7:00 AM - 3:00 PM

Saturday • 8:00 AM - 2:00 PM

936 E. Main St. • Warsaw, MO

(660) 438-9424



ROLLING PERFECTION

RESIDENTIAL AND COMMERCIAL
INTERIOR/EXTERIOR PAINTING
ROOFING, SIDING

AND

"SO MUCH MORE"

LICENSED & INSURED

417-288-9435 / 660-924-6069

OWNERS: MIKE & SHAWNA BARKER

22 | HERITAGE DAYS 2021

Community Building Long on History and Charm

The Community Building is a large two-story stone building with a full basement. The facility was built in 1936 with WPA funds and renovated in the 1980's to add restrooms on the main floor and a kitchen facility.

During the early 1940's the basement was used as a roller rink just prior to the famous Bishop Gunstock Company leasing the facility. The Bishop Gunstock Company occupied the basement of the building for some 50 years until 1993. For several years the City used the basement facility as an economic development industrial/manufacturing incubator to assist small businesses prior to their move into larger facilities.

A full court gymnasium floor has seen many basketball games on the main floor of the building. The Lions Club has held annual week long tournaments for over 50 years. Many Warsaw high school alumni remember playing here before the school district had a facility.

The stage area has given many parents a proud moment as they saw their child either perform on it or receive certificates of honor.

The building is used now for many events such as weddings, various receptions, reunions and other family gatherings, auctions, dances, dinners, and year-

round recreation programs. In addition the Harbor Room (Lower Level) overlooks the beautiful Drake Harbor and is available to rent for smaller events.

The upper level houses the Chamber

of Commerce and the lower level of the building houses the Police Department, Council Chambers, and the Harbor Room.



ANSTINE

REALTY & AUCTION, LLC



Your Hometown Realty & Auction Company

Fall is a Time for Change... We can help!

Reach out to one of our professional agents today!

1649 Commercial St., Ste. 4
Warsaw, MO

OFFICE: 660-438-7000



Lora Anstine
Broker/Owner
(660)
525-9914



Kelly Stackhouse
Broker Sales, GRI
(660)
221-1443



Lisa Firsick
Sales Associate,
GRI
(660)
223-6928



Debra Anderson
Sales Associate
(660)
233-3673



Chelsea Rusan
Sales Associate
(573)
317-7500



Cathy Wilson
Sales Associate
(816)
898-7645



Holly Hatzenbuehler
Sales Associate
(660)
723-2291



Wednesday:

11:00-7:00

Friday-Saturday:

11:00-9:00

Sunday:

11:00-7:00



CALL IN YOUR ORDER!

[660] 438-3060

801 Kennedy Dr Warsaw, MO 65355



COUNTRY MART

OPEN 7 DAYS A WEEK! 7 AM TO 9 PM
BETTER QUALITY... BETTER VALUES...

1000 E. Main St.,
Warsaw MO
660-438-5179

CHECK OUT OUR WEEKLY
FACEBOOK ONLY
SPECIALS



St. Ann
BAZAAR

In Conjunction with Heritage Days!

Our Doors Are Open

Saturday, Oct. 16

9 am – 6 pm

and

Sunday, Oct. 17

10 am – 2 pm

Country Bakery

Cookie Wheel

Country Store & Gifts

Please Note:

*St. Ann Church is not on the Bus Route.
 There is ample parking on the church grounds.
 We invite you to come and enjoy the Bazaar!*



Spaghetti &
Meatball Dinner
Saturday, Oct. 16

Serving from
 11 am – 6 pm



Roast Beef
Dinner
Sunday, Oct. 17

Serving from
 11 am – 2 pm

Saturday (\$10.00) & Sunday (\$12.00) Adult Meal Tickets - Children (\$5.00) Sat. & Sunday

St. Ann Parish Hall

West Dam Access Road Off Hwy 7
Warsaw



Reece Nichols

GOLDEN KEY REALTY

An Independently Owned and Operated Member of the Reece & Nichols Alliance, Inc.

800-760-2255 • 660-438-7228

Visit www.linkatthelake.com For More!

Located on Highway 65 just North of Warsaw



Email: goldenkey@reecenichols.com



Like Us!

303 Seminary, Warsaw, Mo
kpearcy26@gmail.com
417-664-5703

Creative Palette

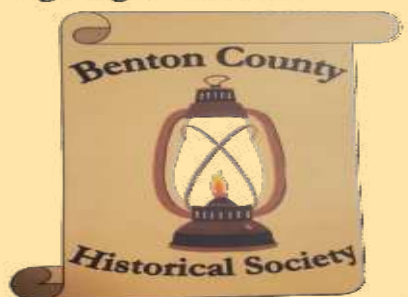
Classes-Boutique-Parties-Sublimation-Engraving



Boutique Shopping Paint Studio Create A Critter

Voted Missouri's Most Unique Boutique!!!

Lighting the Future...



By Remembering the Past!

BENTON COUNTY MUSEUM

Open:

April - October

Friday-Saturday:

10 AM - 4 PM

Sunday:

1 PM - 4 PM

ADMISSION:

Members no charge; \$3 adult, \$2 senior,
\$2 children 4-12, children under 4 FREE

GROUP TOURS BY APPOINTMENT

www.bencomo.org / info@bencomo.org

1660 Hilltop Drive, Warsaw, MO 65355

P.O. 1082

660-438-2304

The WOOD SHED

We Specialize in Cedar Signs & Cedar Custom Furniture

We Custom Build Log Bedroom Suites
Red Cedar Slab & Log Signs • Tables & Chairs
Benches • Coolers • Cedar Chests
Quality Gifts & Crafts



Cabins, Sheds &
Mini Barns
Rent-To-Own
Option Available

We now sell
Commercial
Buildings
up to 60 Ft. Wide

SUPER SALES CENTER
for Carolina Carports, Inc.

Open Monday - Saturday 9 AM to 5 PM • Closed Sunday
13913 Hwy 7 N • Warsaw, MO 65355 • (660) 438-8705
www.ozarkwoodshed.com

R&C Adventures

LOG CABIN RENTALS BY TRUMAN LAKE



Open All Year!
Free WiFi!
Playground!
Horseshoe pit!

*The Number One Comfort Stop
For The Whole Family
To Come Relax, Fish, Hunt, & Enjoy The Outdoors!*

660-438-5933

Conveniently located near Truman Lake,
only one mile north of Long Shoal Marina!

12049 Hwy 7, Warsaw MO

randcadventures.com

randcadventures65355@gmail.com

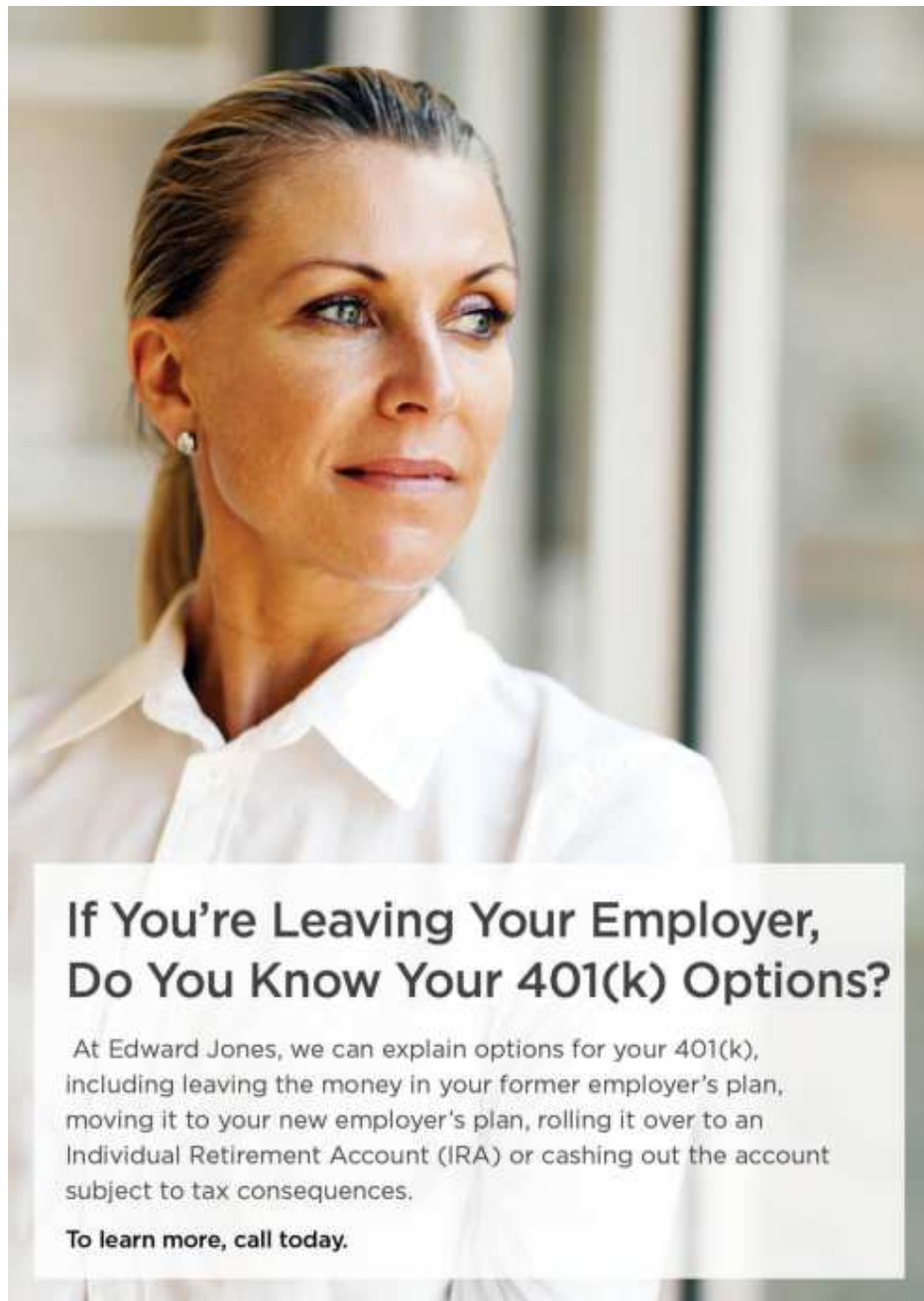


NIX HORSESHOE BAR

312 Benton St.
Warsaw, MO
(660) 723-9016

COME IN FOR THE FUN OUTSIDE ACTIVITIES IN THE BEER GARDEN
SEE YOU THERE





If You're Leaving Your Employer, Do You Know Your 401(k) Options?

At Edward Jones, we can explain options for your 401(k), including leaving the money in your former employer's plan, moving it to your new employer's plan, rolling it over to an Individual Retirement Account (IRA) or cashing out the account subject to tax consequences.

To learn more, call today.



Rickie Caswell, AAMS®
Financial Advisor

1620 Commercial
Warsaw, MO 65355
660-438-2642

edwardjones.com
Member SIPC

Edward Jones
MAKING SENSE OF INVESTING



**T-Shirts,
Banners,
Signs,
So Much More!**

T-SHIRTS THAT SOAR Offering Free Delivery To Clinton!

Call Us: (660) 723-0550
birdmanapparel@hotmail.com
Visit *birdmanapparel.com*

107 East Main Street
Warsaw, MO 65355
Monday-Friday 9:00 AM - 3:00 PM

Heavenly Pets

at the Lake



Professional
Dog Grooming

660-547-0033



www.heavenlypetslincoln.com



WHERE EVERY EXPERIENCE IS NICE AND EASY!

HOURS
MON-FRI: 9:00-5:30
SAT: 9:00-1:30
SUN: CLOSED

(660) 383-1899
WWW.BANKSMOTORS.COM
726 E OHIO ST, CLINTON



Pecan Grove

CAMPGROUND & RV PARK

Come see us and our many vendors!



GIFT SHOP!

*Shower House-171 sites
Pool/Hot tub/Laundry
Bait & Tackle on Site*

LOG CABINS

Built-in rustic style with antique claw foot bathtubs
Open cabins with loft sleeps up to 6 people
Peaceful retreat



CAMPSITES

Full Hook-ups
30 & 50 amp

30249 N. Dam Access Rd. Warsaw, MO
Located on Dam Access Rd.
About 1 mile West of Warsaw off Hwy 7

(660) 438-7688



CARS & COFFEE

Heritage Days
Weekend

Saturday
October 16, 2021
8:00am-Noon

900 East Main St.
Warsaw, Mo

A FREE COMMUNITY EVENT
Featuring old cars, new cars, muscle cars, race cars, hot rods, rat rods, motorcycles and of course trucks. Come by and spend the morning enjoying coffee on us!!



660-438-7100



3 MILES - 2nd Left at Swinging Bridge





**COMMUNITY
NATIONAL
BANK & TRUST**

Member
FDIC

www.mybankcnb.com

**TWO CONVENIENT LOCATIONS
TO BETTER SERVE YOU**

**1695 Hilltop Drive | Warsaw, MO
660-438-9554**

**101 S Hwy 65 | Lincoln, MO
660-547-3311**

The Landing Bistro & Lounge

HOURS

Mon-Thurs: 11-9

Fri & Sat: 11-10

660-438-2732

**305 W Main
Warsaw, MO**



The Landing Boutique



**Open Monday through Saturday
10:00 AM - 5:00 PM**

There's much to see here!

So, take your time, look around, and find the perfect piece for your home or cabin. Try on our unique selection of jewelry, browse our seasonal décor, and take in the delightful smell of hand made soap and lotions. Our friendly staff are happy to assist in any way.

Weekender RV Service



**We offer a
full line of RV
repair and
maintenance!
Get your
quote today!**

Covering Warsaw and the Tri-Lake Area!

19157 Irish Rd in Warsaw

(660) 723-3534

www.weekender-rv-service.business



Our well maintained marina, boat ramp, campground and motel allow our visitors to make the most of their visit whether it is fishing, boating, water sports, hunting or taking advantage of the Truman Lake Mountain Bike Trail where there is a trail head at the entrance to our property! We welcome you and your family's visit!



CALL TODAY!
(660) 438-2280

18174 Marina Rd, Warsaw, MO 65355

**Any 6" sub
for \$3.99!**
with the purchase of any 20oz,
30oz, 40oz OR bottled drink



Valid only at: Subway of Warsaw
1886 Commercial St.
order online: www.subway.com
EXPIRES: 12/1/2021



Excludes Cali Subs. Redeemable at participating restaurants. Extras/Add-ons add'l. Plus tax. Cannot combine with other offers. 1 use. No cash value. Void if sold, reproduced or altered, & where prohibited. Excludes Fresh Melts™ in-app/online & Signature Wraps. Not valid in AK & HI.



**Any 6" sub
for \$3.99!**
with the purchase of any 20oz,
30oz, 40oz OR bottled drink



Valid only at: Subway of Warsaw
1886 Commercial St.
order online: www.subway.com
EXPIRES: 12/1/2021



Excludes Cali Subs. Redeemable at participating restaurants. Extras/Add-ons add'l. Plus tax. Cannot combine with other offers. 1 use. No cash value. Void if sold, reproduced or altered, & where prohibited. Excludes Fresh Melts™ in-app/online & Signature Wraps. Not valid in AK & HI.

1886 Commercial St. • Warsaw, MO • order online: www.subway.com

There's No Place Like Home.

...and there's no better place than Warsaw
and the surrounding area to
live, work, or play.

**HAWTHORN BANK SUPPORTS OUR
VETERANS AND AMERICA'S FREEDOM**



- Free On-Line Banking
- Free Bill Pay
- Special Travel Opportunities
- Special CD Rates
- Loan Decision Made Locally



*Home Loans
Business Loans
Online Banking
Cash Management
Elite Advantage Club*

*Please call or
stop by today!*



NASDAQ: HWBK
NMLS: # 409185



Hawthorn
BANK®

Your Community Bank Since 1891 |
Warsaw Banking Centers

Main Street
Banking Center
200 W. Main

North Town
Banking Center
1891 Commercial

(660) 438-2847

hawthornbank.com