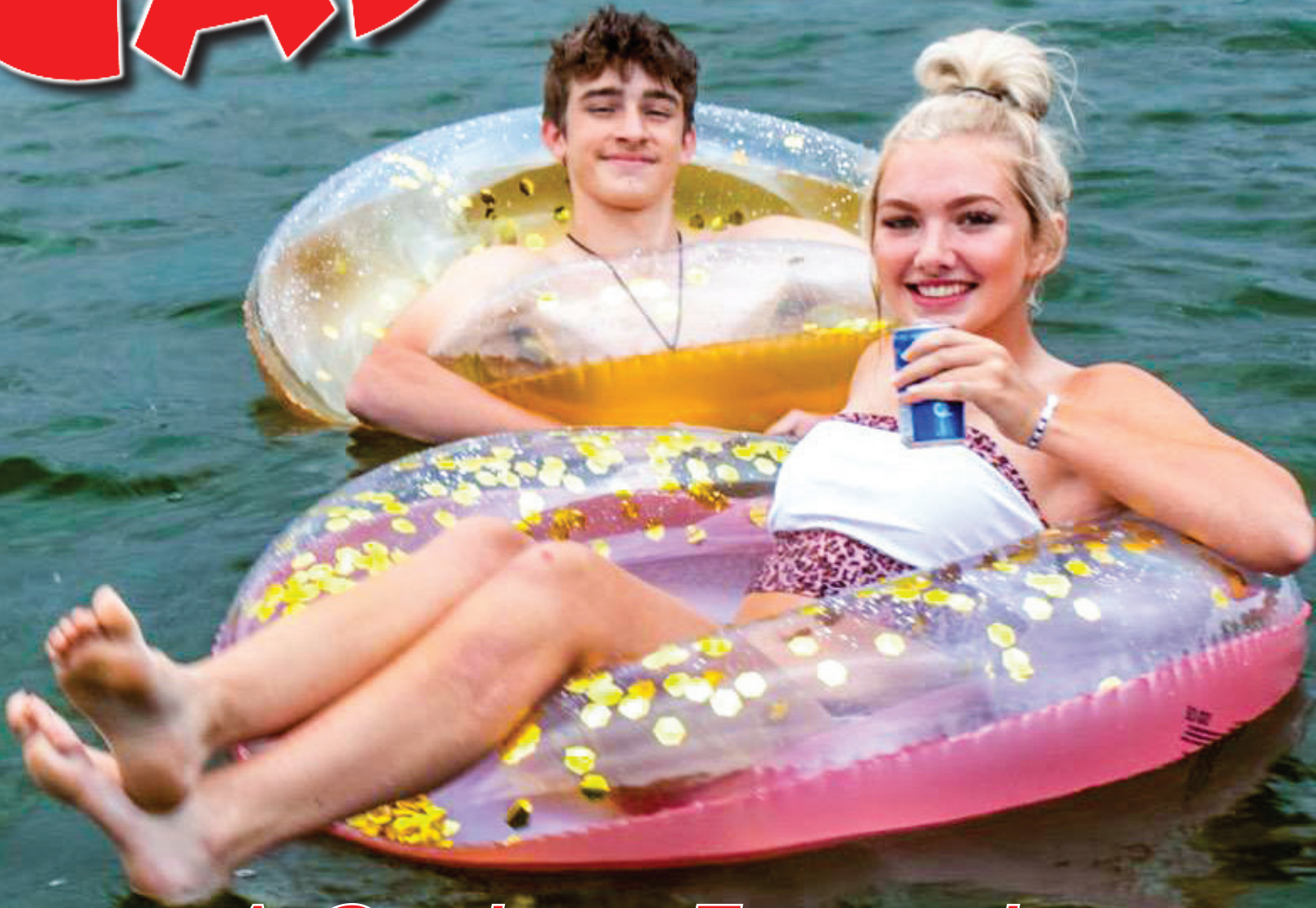


THE CASTAWAY

SUMMER 2020



*A Guide to Truman Lake
& Lake of the Ozarks*
A Benton County Enterprise Publication

There's No Place Like Home.

...and there's no better place than Warsaw
and the surrounding area to
live, work, or play.

**HAWTHORN BANK SUPPORTS OUR
VETERANS AND AMERICA'S FREEDOM**



- Free On-Line Banking
- Free Bill Pay
- Special Travel Opportunities
- Special CD Rates
- Loan Decision Made Locally



Home Loans
Business Loans
Online Banking
Cash Management
Elite Advantage Club

Please call or
stop by today!



NASDAQ: HWBK
NMLS: # 409185



Hawthorn
BANK®

Your Community Bank Since 1891

Warsaw Banking Centers

Main Street
Banking Center
200 W. Main

North Town
Banking Center
1891 Commercial

(660) 438-2847 | hawthornbank.com

Non-Stop Family Entertainment

Family entertainment is abundant around the lake area. Places such as the Warsaw Municipal Swimming Pool, Lost Valley Fish Hatchery, Boonslick Regional Library, Truman Lake Opry, and Jesters Bowling Alley are just waiting for people like you to come to visit.

WARSAW MUNICIPAL SWIMMING POOL

Newly built and open for business, the family-friendly Warsaw Municipal Swimming Pool is located in Lay Park at 1009 West Jackson Street, right next to a playground, tennis courts, and Lumpe Field. The pool offers amenities such as a diving board, giant water slide, wading area, concession stand, and lap pool, not to mention amazingly friendly and helpful lifeguards and management. The hours of open swim are from noon to 7 PM, six days a week, and noon to 5 PM on Sundays. Water aerobics classes are offered Monday through Friday 9-10 AM, and the pool can also be rented out for parties! Swim lessons are Saturday mornings from 9 AM - noon. Admission for open swim is \$4 per person, with punch passes available for savings throughout the summer. Give them a call for more information at 660-428-2199.

LOST VALLEY FISH HATCHERY

The Lost Valley Fish Hatchery and Visitors Center is located off of Highway 65 on Lost Valley Road. The visitor's center is home to a 12,700-gallon tank, containing several different species of fish. At the

center, you will find exhibits that include information and interaction regarding various outdoor activities. A kid's fishing pond is also available to allow children to brush up on their fishing skills before going out on the lake. A gifts shop can be found at the center and includes souvenirs, apparel, and gifts. The Lost Valley Fish Hatchery is open from 9:00 AM to 4:00 PM Tuesday through Saturday and is closed on Sundays, Mondays, and certain holidays. Admission into the hatchery is free. Call 660-438-4465 for more information.

BOONSLICK REGIONAL LIBRARY

The Boonslick Regional Library provides reading enjoyment for all ages, including reading programs held all year long. The Warsaw library offers several computers for the use of both adults and children. The library is located at 106 West Jackson Street; in the heart of Warsaw. Hours of operation are from 9:00 AM-5:30 PM on Monday through Saturday. Contact the library at 660-438-5211 for more information.

JESTER'S BOWLING ALLEY

Jester's Bowling Alley is a hotspot for tourists and locals alike, the perfect place for entertainment after a day full of fun on the lake. Jester's is located just up 65 Highway towards Lincoln at 23939, US Hwy 65. An arcade and bowling fun await you at Jesters. To hear about their discounts and specials, give them a call at 660-547-BOWL.



CASTAWAY MAGAZINE 2020

Castaway is published by the Benton County Enterprise Company, Inc.

Enterprise Building,
107 Main St.
Warsaw, Missouri
65355
Telephone
660-438-6312

bentoncountyenterprise.com

Publisher

James Mahlon
White

Design Director

Lael Ann
Johnson

Sales Director

Keegan Shiloh
Glenn

Content Director

Stormy Waters

ON THE COVER:
WARSAW RESIDENTS RAYNI SIMONS AND TREY PALMER ENJOYED AN AFTERNOON ON THE OSAGE RIVER.

Welcome to Warsaw

Outdoor adventure has long been Warsaw's heritage, and the opportunities for fishing, hunting, and lake life family fun abound. As a recipient of the 2020 "Great Places in Missouri Award", Warsaw features fantastic access to outdoor recreation and a unique blend of old time charisma and modern day fun. Be sure to visit the Lost Valley Fish Hatchery, where they produce and distribute fishing dreams. The Harry S. Truman Overlook gives a sweeping view of Truman Lake and Truman Dam, along with a unique portrait of the history of the area. Drake Harbor and the award-winning River-

front Trails take advantage of the gorgeous scenery along the Osage River, so named for Warsaw's first residents, the Osage Indians. Walk, run, or bike for 23 miles along the river. The trails are linked by Joe Dice Swinging Bridge, which spans the Osage River and is one of the last bridges of its kind. If off road adventure is what you seek, it awaits at Truman Lake Mountain Bike and Hiking Park and Shawnee Bluff Trail. Warsaw is host to the State Championship Mountain Bike Race, is a stop on the NICA circuit, and home to some of the best single track in the state. Along historic Main Street you'll find

an abundance of unique shopping, from old time antique malls to modern day boutiques, and restaurants serving delicious food sure to satisfy. Main Street has been revamped to resemble the streets of old, with replica street lamps and brick paver sidewalks. Drake Harbor and Main Street are also utilized as festival venues throughout the year, like Jubilee Days and the Junk Festival in summer, through fall to Heritage Days, and don't miss Christmas at the Harbor. Whatever your passion, from outdoor adventure to wining and dining, find it in Warsaw, Missouri.



A WARM WELCOME from Mayor Eddie Simons and City of Warsaw employees Jenn Bradshaw, Jessica Kendall, Jill Cobb and Kylie McRoberts. Warsaw was once known as the Steamboat Capital of the World and the Gunstock Factory of The World. Today the area is best known for being at the heart of Truman Lake and Lake of the Ozarks along with warm hospitality.



Places To Lay Your Head- Stay A While

CAMPGROUNDS AND RV PARKS

Angler's Camp RV Park • 660-438-6889
 Country Lakes R.V. Park • 660-438-8400
 Deer Rest Camp & Park • 660-438-3872
 Edgewater R.V. Park • 660-438-0203
 Fairfield R.V. Park • 660-438-9765
 Grand River Resort R.V. Park • 660-438-274
 Harry S. Truman State Park • 660-438-7711
 Kirn Lakeview R.V. Park • 660-438-3761
 Lakeview R.V. Park • 660-438-6373
 Long Shoal • 660-438-2342
 Osage Bluff • 660-438-3873
 Our Slice of Paradise • 660-438-5333
 Outback R.V. Park • 660-438-7637
 Pecan Grove Campground • 660-438-7688

Reed's R.V. Park & Storage • 660-438-2068
 Rocky Top R.V. Park • 660-438-5097
 Shady Grove R.V. Park & Campground • 660-477-0134
 Shady Oaks Park • 660-438-5097
 Sterett Creek • 660-438-2821
 Southview R.V. Park • 660-438-2895
 The Last Resort • 660-438-6691
 The Old Oar House Inn • 660-438-5398
 Thibaut Point • 660-438-2767
 Tomb Stone Island R.V. Park • 660-438-1033
 Truman Dam R.V. Park • 660-438-9678
 Truman Lake Resort Fairfield • 660-438-7576
 TT Highway Camp Center • 660-547-0077
 Waterfront R.V. Park • 660-438-7274
 White Branch Marina R.V. Park • 660-438-6344

HOTELS/MOTELS

660-428-1208

Country Lakes Motors

32550 Highway MM, Warsaw
 660-438-8400

Lake Hills Motel

31535 Hwy 88
 660-438-5191
 www.lake-motel.com

Grand River Resort

11919 Hwy 7
 660-438-2741
 www.grandriverresort.com

Old Oar House Inn

BB Highway
 660-438-5398

Headwaters Motel

31560 Warsaw Ave.
 660-438-7314

Osage Bluff Lodge

Hwy 83
 660-438-289
 www.osageblufflodge.com

Hidden Lake Motel

11958, Hidden Lake Dr.

Parkfield Inn

151 N. Dam Access Rd.
 660-438-2474
 www.parkfieldinn.com

Parkside Cabins

Warsaw
 660-438-8399

Pecan Grove Cabins

30249 N. Dam Access Rd.
 660-438-7688

R&C Adventures

12049 Hwy 7
 660-438-5933

Reel & Trigger Resort

29720 Hwy UU
 1-877-782-8393
 www.reelandtrigger.com

River's End Motel

31635 Hwy 83
 660-438-2878
 www.riversendmotel.com

Sterett Creek Cabins

18597 Sterett Creek Dr.
 660-438-2251
 www.sterrettcreekvillage.com



LOG CABIN RENTALS BY TRUMAN LAKE

OPEN ALL YEAR!
 FREE WIFI
 PLAYGROUND
 HORSESHOE PIT!




The Number One Comfort Stop For The Whole Family
 To Come Relax, Fish, Hunt, & Enjoy The Outdoors!

660-438-5933

CONVENIENTLY LOCATED NEAR TRUMAN LAKE,
 ONLY ONE MILE NORTH OF LONG SHOAL MARINA!

12049 Hwy 7, Warsaw MO

randcadventures.com
 randcadventures@embarqmail.com



Sterett Creek Resort

18321 Marina Rd
 660-438-2821
 www.sterettcreek.com

Lakes Inn Motel

11603 Commercial
 660-438-2882
 www.lakesinmo.com

Truman West Side Suites

13900 Hwy 7
 660-438-5176

Uncle Gabby's Cabin Rentals

11015 Hwy 7
 660-477-9448
 www.unclegabbyscabins.com

Uncle Gabby's Motel

10825 Hwy 7
 660-477-3331
 www.unclegabbys.com



Warsaw Flower & Gift Shop

420 Commercial Street
 Warsaw, MO 65355
 660-438-5731

Hometown Florist Since 1956
 All Major Credit Cards Accepted

Liz Hollingsworth, Owner

See Us For All Your Floral & Gift Needs



(660) 428-2354

Planters Vases Artware Giftware



Decorative Accessories
 for the Home & Garden
 In the Beautiful Harbor View Garden District

119 E. Main St, Warsaw, MO
 (Corner of Main & State Streets)




Fireworks Give Lakes Area A Festive Boom!

Fireworks will fill the lake horizon with bright colors as the Warsaw Area Chamber of Commerce and the City of Warsaw host the Downtown Fireworks Show. As in last year, the fireworks will be shot off the levee across from Drake Harbor as soon as dark falls. With great viewing opportunities in Drake Harbor, MK White Park, and the levee trails, attendees are sure to enjoy the show.

If you tune in to KDKD 95.3 FM during the show,

specialized music will be playing to accompany the fireworks. Drake Harbor boat ramp will remain open for launch, along with Bledsoe Ferry boat ramp to accommodate those wanting to get on the water to watch the fireworks.

Donations are gladly accepted for this event at any time of the year. For more information or to donate to the Downtown Fireworks Experience, contact the Warsaw Chamber of Commerce at 660-438-5922.



THE FIREWORKS OVER DRAKE HARBOR on the 4th of July are a beautiful sight.



THE DRAKE HARBOR EXPERIENCE along with retail venues that include Kovac's Fireworks help ring in the patriotic cheer for locals and visitors alike.



ReeceNichols

GOLDEN KEY REALTY

An Independently Owned and Operated Member of the Reece & Nichols Alliance, Inc.

800-760-2255 • 660-438-7228

Located on Highway 65 just North of Warsaw

Email: goldenkey@reecenichols.com

Visit www.linkatthelake.com For More!

Luke Beaman
660-723-0563



Fred Beaman
660-438-7228



Julia Lockney
660-438-0685



John Eierman
660-723-0988



Kennie VanHolten
660-229-2968



Heath Karr
660-723-0119



Debbie Wood
660-221-5710



Team Fanning
866-438-7070



Brandon Martin
660-221-7939



Terry Beem
660-723-1193



Crystal Self
660-620-9217



Outdoor Attractions

Cycling, hiking fishing hunting, and of course lake life fun! The Truman Lake area offers countless sporting attractions that are great for the whole family. These attractions include: The Walking/ Biking Trails of Drake Harbor, Shawnee Bend Golf Course, Truman Lake Mountain Bike Park and Hiking Area, Harry S. Truman State Park, a Disc Golf area, and a Skate Park.

WALKING AND BIKING TRAILS AT DRAKE HARBOR

The Drake harbor area is home to numerous walking trails that show off some of Warsaw's most beautiful countryside. These trails allow for users to get a glimpse of some of the unique wildlife roaming the area, all while catering to enthusiasts of nature, walking, and biking alike. The current trails include the Bledsoe Ferry Trail, Kickapoo Island

Trail, Steamboat Landing Trail, Osage Trail, and Eastgate Trail. The trails are accessible at various points across Warsaw and more information regarding them can be obtained through calling 660-438-5522.

SHAWNEE BEND GOLF COURSE

The Shawnee Bend Golf Course offers a beautiful nine-hole, par 36 course to challenge even the avid golfer. Located two miles northwest of the center of Warsaw, the Shawnee Bend Golf Course offers a driving range, clubhouse, snack bar, golf shop, putting green, and indescribably gorgeous views of Truman Lake and the area surrounding it. You may even be able to catch a glimpse of the local wildlife along the way. The hours of operation are from 7:00 AM to dusk from Monday to Sunday (except during league play.) Con-

tact the course at 660-438-6115 for more information or visit the website at www.shaw-needbendgolf.com.

TRUMAN LAKE MOUNTAIN BIKE PARK AND HIKING AREA

The Truman Lake Mountain Bike Park and Hiking Area is located three miles from downtown Warsaw on Benton House Avenue, just off the Truman Dam Access Road. The park offers several different biking and hiking trails for all different levels of riders and hikers. Come out and enjoy the beautiful scenery while treating yourself to a hiking trip or bike ride like no other. Contact the Warsaw Parks and Recreation Department at 660-438-5522 for more information.

BERRY BEND EQUESTRIAN PARK

Berry Bend Equestrian Park is located at the Berry Bend Campground area down Z Highway and off of 7 Highway. The park is

limited to equestrian users only. Amenities include corrals, overhead tie posts (next to some campsites), all season water hydrants, and several miles worth of trails. Call 660-438-7317 for any more info.

HARRY S. TRUMAN STATE PARK

The Harry S. Truman State Park is can be found on UU Hwy about seven miles from Warsaw, off of Hwy 7. Sitting on a peninsula, Truman

State Park offers many activities for all to enjoy. Hiking, fishing, boating, camping, swimming, picnic areas, playgrounds, a marina, beaches, and abundant wildlife are what you can expect at the Harry S. Truman State Park. Hours are from sunrise to sunset and admission is free, although daily fees are required for use of the beaches. Contact the park office at 660-438-7711.

M.K. WHITE PARK

M.K. White Park connects to the Drake Harbor area off of Main Street in Warsaw, behind the Corner Gardens. At M.K. White Park, you will find a challenging and fun disc golf course. Lake of the Ozarks backs up to M.K. White Park and offers bank fishing opportunities and wildlife viewing.



The Yuppy Puppy Grooming Spa, Boutique & Boarding

660-428-2438

185 West Main St.
Warsaw, Missouri

www.theyuppypuppyspa.com

Like us on Facebook @YuppyPuppyPage

HOOK Solutions



Fishin' Lures and Tackle

Manufacturer of fishing lures

Taking Orders Since 1987.

Made in USA.

23964 Highway 65

Warsaw, MO 65355

660-547-2874 ph
660-547-3092 fax

www.hooksolutions.com
david@hooksolutions.com

Area Eats

B&B Bar and Restaurant
25848 Highway BB, Warsaw
660-438-2131

Bootleg BBQ
317 W. Main, Warsaw
660-438-3500

Buck Naked
29580 Waters Edge, Lincoln
660-668-2003

Butterfield Limited
34124 Native Ave, Warsaw
660-438-3931

Charley's Buffet
23799 State Hwy B, Lincoln
660-668-3806

Cook Shack BBQ
8825 Highway ZZ, Iconium
417-646-5516

Cosmic Café
504 W. Main St, Warsaw
660-438-6171

Cow Patties
604 W. Main St, Warsaw
660-438-6046

Dar's Country Café
32770 Hwy MM, Warsaw
660-438-7477

El Camino Real
120 Polk St, Warsaw
660-438-9994

Estes Drive Inn
525 N. 65 Hwy, Lincoln
660-547-3516

Ferg's Diner
14659 Highway 7, Warsaw
660-2960

Hideaway Bar & Grill
Hwy 7, Warsaw
660-438-5106

Hidden Lake Lounge & Restaurant
Hwy 7, Warsaw
660-428-1208

Hill-Top BBQ
31594 Hwy 83, Warsaw
660-438-6311

Lil' Papa Joe's
18321 Marina Rd, Warsaw
660-223-9300

Lincoln Inn
N.65 Hwy, Lincoln
660-547-3417

Long Shoal Marina & Restaurant
Hwy 7, Warsaw
660-438-2841

McDonald's of Warsaw
Hwy 65, Warsaw
660-438-7612

Mom's Kitchen
14216 Hwy 7, Warsaw
660-438-2278

Osage Bluff Restaurant
17470 Osage Bluff Rd, Warsaw
660-438-6464

Pizza Hut of Warsaw
910 Dogwood St, Warsaw
660-438-6464

R&R BBQ & Custom Food
10966 Hwy 7, Warsaw
816-945-7722

R-Bar
31390 Warsaw Ave, Warsaw
660-438-RBAR

Redwing Coffee & Roastery
936 E. Main St, Warsaw
660-438-9424

Rick's Oar House Inn
Hwy BB, Warsaw
660-438-5398

The Dam Restaurant & Lounge
1895 E. Main St, Warsaw
660-438-3060

The Landing Bistro & Lounge
305 W. Main St, Warsaw
660-438-2732

The Rusty Skillet
248 W. Main St, Warsaw
660-438-7660

The Yellow Deli
145 W. Main St, Warsaw
660-438-2581

TW BBQ
Hwy 7, Warsaw
660-438-5176

Shirley's Highway Café
N. 65 Hwy, Lincoln
660-547-3500

Sonic Drive-In of Warsaw
2003 Commercial St, Warsaw
660-438-6200

Subway of Warsaw
1886 Commercial St, Warsaw
660-438-4234

Taco Villa
Truman Hills Mall, Warsaw
660-438-6027

The Drunken Minnow Grill
18174 Marina Rd, Warsaw
660-438-2880

White Branch Marina Restaurant
31092 Stonecrest Rd, Warsaw
660-438-6344



Cow Patties
Restaurant

Full Menu Served All Day

Home of the 16 oz. Cow Pattie Hamburger

Hours
Mon-Sat: 6 AM to 3 PM
Sunday: 6 AM to 1 PM

604 W. Main Street
Warsaw, MO
660-438-6046

FULL MENU ALL DAY!

SHIRLEY'S
HIGHWAY CAFE, LLC

(660) 547-3500
548 N. 65 Highway
Lincoln, Missouri

MOM'S
Kitchen

660-438-2278
14216 Hwy 7 Warsaw, MO

A MILE WEST OF THE MILE LONG BRIDGE!



**RED WING
COFFEE
& ROASTERY**

**We Roast Our Coffee Beans in House!
Special Blends Available!**

**Homemade Pastries ~ Soup of the Day!
Limited Breakfast & Lunch Items**

Goose Creek Candles & Fresh Whole Bean
or Ground Coffee Packages

Monday - Friday • 7:00 AM - 5:30 PM

Saturday • 7:00 AM - 2:00 PM

**936 E. Main St. • Warsaw, MO
(660) 438-9424**



**BILL'S
REPURPOSE**

223 W. Main Street
Warsaw, Missouri
816.807.1496

**Architectural
Salvage**

FUN JUNK

**Hello,
neighbor!**

Suzie Brodersen, Agent
1872 Commercial Street
Warsaw, MO 65355
Bus: 660-438-7472
suzie.brodersen.102m@statefarm.com

Please stop by and say, "Hi!"
I'm looking forward to serving
your needs for insurance and
financial services.
**Like a good neighbor,
State Farm is there.®**
CALL ME TODAY.

State Farm™

1001013.1 State Farm, Home Office, Bloomington, IL

ANSTINE

REALTY & AUCTION, LLC

660-438-7000
1649 Commercial St., #4
Warsaw, MO 65355
(1½ Blocks North of 7 HWY/Commercial St. Light)

Equal Housing Opportunity

MLS



Lora Anstine
Owner/Broker
(660) 525-9914



Kelly Stackhouse
Sales Associate
(660) 221-1443



Lisa Firsick
Sales Associate
(660) 223-6928



Debra Anderson
Sales Associate
(660) 233-3673





ALCANTARA

VETERINARY HOSPITAL

1252 Commercial Street • Warsaw, Missouri 65355

660-438-6493

alcantaravethospital.com

At Alcantara Veterinary Hospital, we offer a variety of services to care for your pet. If you have any questions or would like more information on how we can care for your pet, please contact us today.

DIAGNOSTICS • EXAMS & CONSULTATIONS
NUTRITIONAL COUNSELING • SURGERY • VACCINATIONS
MICROCHIPPING • PREVENTATIVE MEDICINE
PHARMACY • WALK-INS • BOARDING

We believe in treating every patient as if they were our own pet.



Julie's

ARTILLERY HILL STORAGE



SELF STORAGE



5X10 - 10X10 - 10X20
OUTDOOR STORAGE

24 HOUR
SECURITY CAMERAS

Owned & Operated by Rich and Julie Guyette

660-438-5113

2 MILES

660-723-3939

32748 Hwy MM, Wildcat Dr.

BAIT • FUEL • PROPANE • GROCERY • COLD BEER • LIQUOR • LOTTO
HUNT BROTHERS PIZZA



11429 HWY Z WARSAW, MO 65355 660-438-6300

STERETT CREEK
on
Truman Lake

Marina 660 438-2280

Resort 660 438-2821

www.sterettcreek.com

MARINA MOTEL CAMPGROUND

Lakeside Motel/Campground ♦ 4 Bedroom Guest House
Overnight & Seasonal Slips ♦ Boat & Jet Ski Rentals
Uncovered Boat/RV Storage ♦ Lil' Papa Joe's Restaurant

DRUNKEN MINNOW
Bar & Grill



SERVING
PIZZA • WINGS • BURGERS • BAR FOOD
660-281-1144

Drunken Minnow Bar & Grill
Located on the water at Sterett Creek Marina

OPEN SEASONALLY
MAY THROUGH SEPTEMBER



Beaches And Swimming

Whether you prefer to swim by boat or enjoy a relaxing day of swimming and picnicking at one of the seven area beaches, there's always room for non-stop fun in Truman Lake.

The U.S. Army Corps of Engineers manages the beaches of Shawnee Bend, Long Shoal, Windsor Crossing, Sparrowfoot, Berry

Bend, Thibaut Point, and Harry S. Truman State Park. The beaches are typically open from May 15 through September 15, with hours being from 8:00 AM until dusk. The swimming areas are outlined with floating buoys and boats are prohibited in swimming areas. No life guards are on duty, although they are being

considered to be there in the near future. Alcohol, glass containers, and pets are not allowed on Corp-managed beaches. Swimming is prohibited around all boat ramps, courtesy docks, and immediately upstream and downstream of Truman Dam.



TRUMAN LAKE MARINE

**LANDAU
MERCURY**

BUY ♦ SELL ♦ TRADE ♦ SERVICE

CUSTOM BOAT COVERS & UPHOLSTERY



660-438-6358



5 miles N on 65



LAY PARK, EAST BLEDSOE FERRY, DRAKE HARBOR, AND HARRY S. TRUMAN STATE PARK are just a few of the beautiful parks the Warsaw area has to offer.



T-Shirts • Hoodies • Hats
Signs • Banners

Work Wear • Corporate Clothing

107 MAIN STREET • WARSAW, MO

660-723-0550

birdmanapparel@hotmail.com



@ BirdmanApparelWarsaw

Parks & Recreation Galore!

The Steamboat Landing at Drake Harbor, located behind the Warsaw Community Building on Lake of the Ozarks, was once used for the distribution of supplies on the Osage River to the city of Warsaw. Fur traders would meet the giant steamboats here and supplies such as salt, iron, meat, grains, and whiskey would make their way in and out of the river city. Today, Warsaw is the furthest west city on the Lake of the Ozarks and home to the breathtaking Truman Lake.

The Steamboat Landing offers a 1,000-foot-long boardwalk, lit up for nighttime enjoyment, that leads to the MK White Park which offers a Disc Golf course and skateboarding area. From this park, you will also reach the Osage Walking/ Biking Trail that stretches across one and a half miles to 65 Highway.

In Drake Harbor, you will find boat docks accessible from Lake of the Ozarks, public boat ramp, playground, picnic area, amphitheater, public restrooms, fishing docks, horseshoe pit, and walking trail which leads to the historical Joe Dice Swinging Bridge.

The decking on the Joe Dice Swinging Bridge was refurbished in the summer of 2016, and now allows visitors to reach the Kickapoo Island

Area and Bledsoe Ferry Trail. Originally built in 1904, the bridge was placed on the National Historical Register on September 17, 1999.

More information on the Steamboat Landing and Drake Harbor can be obtained by visiting the Warsaw Area Chamber of Commerce or their website www.welcometowarsaw.com.

Truman Lake is surrounded by beautiful parks that can be enjoyed regardless of the season. Here you will find over 100 acres of maintained parks and recreation area available for your enjoyment.

AREA PARKS:

Bledsoe Ferry is located along the banks of the Osage River, just off the West Dam Access Road. Overlooking Truman Dam, it offers a number of covered picnic tables and public restrooms. A large field is also easily accessible for your outdoor sporting events.

Drake Harbor and Recreation Area is located on the Osage River arm of the Lake of the Ozarks, just one block off of Main Street, at the intersection of Harrison and Benton Street. This area offers a few picnic tables, public restrooms, amphitheater, horseshoe pits, walking trails, boat ramps, playground, and fishing docks.

Lay Park is located on West Jackson Street and is

home to the new Warsaw Municipal Swimming Pool and Lumpe Field. Here you will find a mountain bike skills park, picnic area, swing set, playground, public restroom, and two tennis courts.

Long Shoal Park is located on Hwy 7 just next to Long Shoal Beach. A covered picnic area, public restroom and playground are available.

Harry S. Truman State Park is located just off of Hwy 7, down UU Highway. This park offers hiking trails, covered picnic area, a playground and public restrooms.

Shawnee Bend Park is located just past Shawnee Bend Golf Course. At this park, you will find public restrooms, playground and ample picnic areas to enjoy.

Rotary Park is located at the corner of Redbud and Gunstock in Warsaw. It has two picnic tables, outside grills, a playground, and Warsaw's only outdoor basketball court.

MK White Park entrance is at the corner of Main Street and MK White Drive. This park is ordered on. The west by the beautiful Osage River, and has fishing docks, restrooms, three picnic tables, a 9-hole disc golf course, wide open space for sporting entertainment, a skate park, and a walking trail.

TO THE RIGHT: DRAKE HARBOR is home to Steamboat Landing and an outdoor amphitheatre. The facility always features magnificent walking, hiking and biking trails. Connie and Bill Peterson watched the river amble by from one of the many benches along the walking path.



The WOOD SHED

We Specialize in Cedar Log Signs & Cedar Custom Furniture

We Custom Build Log Bedroom Suites • Red Cedar Slab
& Log Signs • Quality Gifts & Crafts • Tables & Chairs
Custom Wooden Flags • Cedar Chests



SUPER SALES CENTER
for Carolina Carports, Inc.



**Cabins, Sheds
& Mini Barns**
Rent - To - Own
Option Available



We now sell
Commercial
Buildings
up to 60 Ft. Wide

Open Monday - Saturday 9 AM to 5 PM • Closed Sunday
13913 Hwy 7 N • Warsaw, MO 65355 • (660) 438-8705
www.ozarkwoodshed.com



BothwellTM
Regional Health Center

PEAK
SPORT & SPINE

Therapy Center

**MID-MISSOURI'S LEADER
IN PHYSICAL THERAPY & SPORTS MEDICINE**

NOW OFFERING A
SUMMER SPEED & AGILITY PROGRAM
WITH GROUP RATES

10 SESSIONS & T-SHIRT
.....

Speed & Agility Training is aimed at developing
fundamental motor abilities to enhance the
capability of athletes to be more skillful at faster
speeds and with more precision.

call 660-438-5063 to schedule an appointment

INTEGRATED
FITNESS
Excellence In Health & Wellness
www.integrated4fit.com

950 E. MAIN STREET – WARSAW, MO 65355

(660) 428-2348

SG
STEVE'S

GUTTERING

660-438-6381

WWW.STEVESGUTTERING.COM



**STATUARY
GARDENS**

939 E Main • Warsaw
660-428-1183 or 660-359-1812
Tues-Sat 10-5



- Wind Chimes
- Birdfeeder
- Ornamental Iron
- Concrete Statuary
- Seasonal Plants
- Gifts for Your Gardening Friends

Boutique & Gifts



**STATUARY
GARDENS**

303 Seminary • Warsaw
660-428-1183 or 660-359-1812
Tues-Sat 10-5



- Clothing
- Jewelry
- Handbags
- Shoes
- Candles, Soaps, & Lotions
- Decor for Home or Cabin
- Duke Cannon Soaps & other Men's Products

Opening Friday, July 3rd!



303 Seminary • Warsaw
Inside Statuary Gardens
660-359-1812
Tues, Wed, & Thurs 11-8
Fri, Sat, Sun 11-9



- Locally made from the Ice Cream Factory at Eldon, MO
- Enjoy one of 12 flavors in cones and dish
- Sit back and enjoy 50's & 60's music in the old diner style setting

FARMERS SINCE 1890 BANK

www.fblmo.com



101 S. Hwy. 65
Lincoln, MO
660-547-3311



1695 Hilltop Drive
Warsaw, MO
660-438-9554

Your home owned bank since 1890



MAIN STREET

Spirits
DRIVE-THRU

**Package liquor store
with Drive-Thru**

1027 E. Main • Warsaw, MO

Open 10 AM Daily

expertise.



**At Equity Bank, we have the
expertise to guide you to products
and services that are just the right fit
for your financial needs.**

**100 E Main · Warsaw
(660) 438-4388
equitybank.com**



Member FDIC

Truman

STATE



PARK

Marina

FREE PUBLIC BOAT RAMP
 PONTOON & FISHING BOAT RENTALS
 FUEL • BAIT • FISHING
 FISHING PERMITS
 ICE & CONVENIENCE STORE ITEMS
 SEASONAL & NIGHTLY SLIP RENTALS
 FENCED STORAGE
 BEACHES & CAMPING CLOSE BY
 & LOTS of FUN for ALL!!!



BAR & GRILL

*Relax & Kick Back
on our beautiful on-the-water deck!*

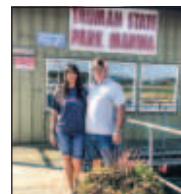
*A full service family run marina
providing all you need
to enjoy Truman Lake!*

660-438-2423

Check out our NEW facebook page!



@Truman State Park Marina



14950 State Park Rd E • Warsaw, Missouri 65355

Located 5 miles west of Warsaw. HWY 7 to HWY UU north.

UU dead ends right into beautiful Truman State Park.

Porter Chiropractic Clinic, P.C.

Established 1965



*The most up-to-date diagnostic &
rehabilitation techniques combined
with hands-on adjusting*

2nd Generation Chiropractor

OTHER SERVICES OFFERED INCLUDE:

Nutritional Counseling
 Exercise, Fitness
 & Wellness Counseling
 Sports Injury Rehabilitation
 Ultrasound Therapy

Leo I. Porter, D.C.

660-438-5511

Or Toll Free 1-888-901-BACK

122. W. Washington
P.O. Box 532
Warsaw, MO 65355

Mon, Tue, Wed & Fri
9 AM to 5 PM
Closed Thur & Sun

MISSOURI

LAND

COMPANY

Farm, Home & Hunting Properties

14981 Centerline Ave. Cole Camp, MO 63525

(660)668-HUNT (4868)

missourilandco.com

KOVAC'S FIREWORKS®

WE RESERVE THE RIGHT TO LIMIT QUANTITIES.



**NO GAMES!
NO GIMMICKS!
JUST LOW, LOW
PRICES!**



14,000
SQ FT!

ST. JOSEPH
7701 SE King Hill Rd
(816) 238-BOOM

OVER
1000
ITEMS

LAURIE
144 Sherman Ridge Dr
(573) 374-1830

WARSAW
31487 Hwy 83
(660) 438-7778



\$14.99 EACH

WHILE SUPPLIES LAST



**\$19.99
EACH**

WHILE SUPPLIES LAST



SAVE \$15
\$24.99
Reg. \$39.99

WHILE SUPPLIES LAST



RAGING BULL
\$39.99 5" ARTILLERY
EACH

Limit 3 per person, per order,
per visit. While supplies
last. Expires 7/10/20.

**WE WILL MATCH ANY
VALID ADVERTISED
RETAIL PRICE!**

In-stock items only. Absolutely no
substitutions. Does not apply to percentage
off coupons, discounts or offers. All prices
valid through July 10, 2020.

NO DEALERS, PLEASE

We have the right to limit quantities.

VISIT US AT WWW.KOVACFIREWORKS.COM



GROUND BLOOM FLIER

**\$.99[¢]
EACH**

REG. \$1.49



WHILE SUPPLIES LAST. EXPIRES 7/10/20.

M-45 TANK

**\$1.49
EACH**

REG. \$2.29



WHILE SUPPLIES LAST. EXPIRES 7/10/20.

SQUILLY

**\$6.99
EACH**

REG. \$10.99



LIMIT 1 PER PERSON PER COUPON PER VISIT.
WHILE SUPPLIES LAST. EXPIRES 7/10/20.

EXTREME RIDE

**\$7.99
EACH**

REG. \$10.99



LIMIT 1 PER PERSON PER COUPON PER VISIT.
WHILE SUPPLIES LAST. EXPIRES 7/10/20.

CANNON CONE #4 FOUNTAIN

**\$1.79
EACH**

REG. \$2.09



WHILE SUPPLIES LAST. EXPIRES 7/10/20.

JUMP MASTER PARACHUTE

**\$5.99
EACH**

REG. \$8.99



WHILE SUPPLIES LAST. EXPIRES 7/10/20.

TWISTER STIX

2/\$1

REG. .59[¢]



WHILE SUPPLIES LAST. EXPIRES 7/10/20.

RED, WHITE & BLUE ARTILLERY 6PK

**\$15.99
EACH**

REG. \$19.99



WHILE SUPPLIES LAST. EXPIRES 7/10/20.

MINI KING BOMB

**\$.69[¢]
EACH**

REG. \$1.09



WHILE SUPPLIES LAST. EXPIRES 7/10/20.

COLOR PEARL 48 SHOT

**\$.69[¢]
EACH**

REG. \$1.09



LIMIT 6 PER PERSON PER COUPON PER VISIT.
WHILE SUPPLIES LAST. EXPIRES 7/10/20.

ROSY POSY SPARKLERS

**\$1.99
EACH**

REG. \$2.49



WHILE SUPPLIES LAST. EXPIRES 7/10/20.

SWEET FOUNTAIN

**\$.69[¢]
EACH**

REG. \$1.09



WHILE SUPPLIES LAST. EXPIRES 7/10/20.

HURRICANE ALLEY, JUNGLE KING & HOWLING WOLF FOUNTAIN

**\$1.99
EACH**

REG. \$2.49



WHILE SUPPLIES LAST. EXPIRES 7/10/20.

COLOR TAIL SATURN MISSILE

**\$5.99
EACH**

REG. \$8.99



WHILE SUPPLIES LAST. EXPIRES 7/10/20.

16 SHOT DAY PARACHUTE

**\$4.99
EACH**

REG. \$6.99



WHILE SUPPLIES LAST. EXPIRES 7/10/20.

WE'RE HERE



FOR YOUR ENTIRE FAMILY

GET WELL. STAY WELL. BOTHWELL.

At Bothwell Health Center—Truman Lake, we know how important your family's health is to you.

That's why we provide high-quality primary and preventive medical care for your entire family. We also offer imaging services on-site and you can see many specialists right here without driving to their office in Sedalia. We're here, and your family's health is our priority.

Hours of Operation:

Monday–Friday: 8 am to 5 pm



I've always been able to count on Bothwell. There's no place I'd rather go. 77



**SCHEDULE YOUR
VISIT TODAY, CALL
660.438.6800
OR 660.829.8888**


Bothwell[™]
Health Center – Truman Lake
brhc.org

Boat Ramps & Fees

There are numerous boat ramps accessible around Truman Lake that are managed by the U.S. Army Corps of Engineers. Self-pay stations are located at the entrance of each pay ramp and are set up for daily use. Annual passes are also available and can be purchased at the Harry S. Truman Visitor Center, Project Office, or at any atten-

dant booth located at campground entrances. For more information, contact 660-438-7317.

The daily fee for using the Corps managed boat ramps is \$5, and an annual pass is \$40. Exclude any Missouri resident 65 years of age or older or any person (resident or not) 15 years of age or younger.

Those required to carry a fishing license agree to observe all of the rules of the Wildlife Code of Missouri and are not allowed to lend the license to someone else for use. They will allow inspections of their permit, picture ID or catch and equipment by an agent of the Conservation Department and will need to carry their license (permit) at all times while fishing.



BOAT & AUTO
RV & CAMPERS
AUTO SOUNDS
MOBILE DETAILING
WINDOW TINTING



ANTHONY BRUCE
913-752-7893

"We Take Pride In Our Work"



Maggie's
Hair Shoppe

Maggie McMillin - Owner / Stylist

324 SEMINARY STREET | CLOSED
FULL SERVICE SALON • WALK-INS | SATURDAY - SUNDAY - MONDAY
WARSAW, MISSOURI | 8AM TO 5PM

660-438-6232

*Drop off
taxes*

Getting your refund is more important than ever.

We're here to help with your tax prep. Safely drop off your docs and go - with or without an appointment.

**H&R
BLOCK**

Questions? Call us.

1878 COMMERCIAL ST, BOX 1307 | WARSAW | 660-438-6622

WARSAW VETERINARY CLINIC



1061 E. First St. • Warsaw

660-438-7333

Emergency:

660-438-5317

Lake Area Rich in History

Truman Lake is home to numerous historical attractions. Some of these attractions include The Benton County Museum, Harry S. Truman Dam and Visitor Center, Joe Dice Swinging Bridge, Steamboat Landing and Drake Harbor, Historic Main Street District and the story of the Butterfield Stagecoach Route.

THE BENTON COUNTY MUSEUM

The Benton County Museum is operated by the kind people with the Benton County Historical Society. The museum can be found at 1660 Hilltop Drive, just up the hill from Sonic Drive-In of Warsaw. Visitors will be offered a unique and exciting glimpse into the

past and given a view as to how Warsaw and Benton County came to be. Admission prices at the Benton County Museum are \$3 for adults and \$2 for seniors and children between the ages of 3 and 12. Hours of operation are on Friday, Saturday, and Sunday (April through October) from 10:00 AM to 4:00 PM.

JOE DICE SWINGING BRIDGE

The Joe Dice Swinging Bridge in Warsaw is a one of a kind and a must-see attraction. Built by Joseph A. Dice, the bridge is over 100 years old and is the only one still standing in the area. In 1999, it was listed on the National Historic Register. The bridge is located parallel

to 7 High-way, and connects the Warsaw's trail system across the Osage Riverwalk, and Warsaw invites you to come and take a stroll around the harbor area. Drake Harbor can accommodate boats from Lake of the Ozarks and gives access from the water to the historic down-town area. A playground, boat ramp, fishing docks, and public rest rooms are also found on the grounds, along with a beautifully constructed amphitheater.

THE BUTTERFIELD OVERLAND STAGECOACH & MAIL ROUTE

A route that connects Benton County through scenic, back country gravel roads, following in the

wagon tracks of history. For bike packing, day tripping, overnight stays and pure adventure, you will fall in love with this section of the Butterfield Stage Experience. Linking to the Rock Island and Katy Trail in Windsor, the Butterfield Stage Experience Bike packing Route utilizes an existing historical trail to promote the attributes

of an entire rural county, enticing adventure seekers to explore the hidden gems of the area. Each community on the route has it's own unique history, with old stone markers showing the way. Cole Camp was motivated to change the name of their city park to the Butterfield Park, and it has become an important way station

for adventurers. Lincoln, known as the town alive on 65, is the hub to the Katy Trail and Rock Island connections. Warsaw is a key component, with a Butterfield Stone marker in their courthouse lawn, and the old stagecoach stop across the street. Get out on the Butterfield and rediscover the pioneer spirit.



THE BENTON COUNTY MUSEUM is home to a great collection of the fascinating history of the area.



Paula's Dog Grooming
By Appointment Only

Paula Wampler

(660) 223-6448
942 E. Main St
Warsaw MO, 65355



KJAR LAW OFFICE, PC
JAMES KJAR, ATTORNEY AT LAW

660-438-7102
220 W. MAIN STREET
WARSAW, MO 65355

Web: www.kjarlawofficepc.com
E-mail: office.kjarlaw@gmail.com

FOR ALL YOUR LEGAL NEEDS!

TOLLIVER'S SALES & SERVICE
(Lincoln's Tire Store)

FOR ALL YOUR AUTOMOTIVE NEEDS

BRAKES • OIL CHANGES
INSPECTIONS • TIRES

FOR FAST TOWING SERVICES
CALL 660-287-4849

498 North 65 Highway, Lincoln, MO
Office: (660) 547-2277



**Little Bit of
EVERYTHING
Outlet Store**

Tuesday - Saturday • 10:00 AM - 5:00 PM
818 Main St. • Warsaw, MO 65355

Area Marinas

Long Shoal Marina & Restaurant

Marina & Restaurant • 660-438-2841
Service Center • 660-438-3030
Campground • 660-438-2342

Long Shoal Marina and Restaurant is located on Truman Lake just off of 7 Highway, approximately seven miles west of Warsaw at 12878 Steamboat Road. Long Shoal is a full-service marina with overnight and seasonal slips available, campground close by, indoor fish cleaning station, boat ramp, boating supplies, groceries, soda, beer, cocktails, bait, tackle, gas, new line of clothing apparel, pavilion for tournaments, service center, and a full service floating restaurant feature a new, mouth-watering menu and an outside patio for scenic dining.

The restaurant is open seven days a week during season and serves breakfast daily from 7 AM to 11 AM, lunch daily from 11 AM to 2:30 PM and dinner Friday and Saturday from 4 PM to 9 PM and Sunday from 12 PM to 6 PM. Kids un-

der five eat for free and Saturday nights offer a fantastic "All You Can Eat Spaghetti Dinner!"

Sterett Creek Marina and The Drunken Minnow Bar & Grill

Marina and Campground • 660-438-2280
Motel • 660-438-2821

Sterett Creek Marina is located on Truman Lake just three miles north of Warsaw on US Highway 65 at 18321 Marina Road. Sterett Creek Marina offers its guests a campground, motel, picnic area, boat ramp, fish cleaning station, freezer storage space, over-night rental slips, gas, boating supplies, bait, tackle, pavilion, and a convenience store. The Drunken Minnow Bar & Grill is open on Friday and Saturday, offering food and beverage on the docks. Sterett Creek Marina is open seven days a week during season Monday through Thursday from 6:30 AM to 6 PM, Friday and Saturday from 6:30 AM until at least 8 PM and on Sunday until 6 PM.

White Branch Marina
Marina • 660-438-6344
White Branch Marina

is the only Warsaw marina located on the Lake of the Ozarks at 31092 Stonecrest Rd. They offer a restaurant, lounge, RV camping, cabin rentals, gas, two water front decks, bait, tackle, snacks, drinks, boating supplies, boat ramp, overnight rental slips, beer, and apparel.

White Branch Marina and Restaurant is open from 2 PM to 8 PM weekdays (closed on Tuesdays) and from 2 PM to 9 PM on Mondays, Fridays and Saturdays.

Osage Bluff Marina and Restaurant

Marina and Restaurant • 660-438-2939
Lodge • 660-438-2891

Osage Bluff Marina is located on Truman Lake just down 83 Highway in Warsaw at 17450 Osage Bluff Road. They offer a floating restaurant, boat ramp, gas, boating supplies, bait, tackle, beer, snacks, drinks, picnic area, campground nearby, and the Osage Bluff Lodge. They offer overnight slips and have their own service center.

The restaurant is open seven days a week during season for breakfast and lunch from 6 AM until 2 PM. The store and

marina hours are during season from 6 AM to 7 PM daily.

Harry S. Truman State Park Marina

Marina and Store • 660-438-2423
Park Office • 660-438-7711

State Park Marina is located on Truman

Lake in Harry S. Truman State Park, just down UU Highway, approximately six miles from Warsaw at 28761 State Park Road. They offer gas, boating supplies, bait, tackle, boat ramp, snacks, beer, drinks, apparel, fish cleaning station, overnight slip rentals, pon-

toon and fishing boat rentals, campground nearby and picnic areas. The Harry S. Truman State Park Marina follows the operating hours of the state park, from sun up until sun down, seven days a week.



AREA MARINAS are home to boats and fisherman alike. Don and Brook Stephenson travelled to Warsaw from Florida to relax and fish.

660-473-3514
660-723-5139
936A East Main St. Warsaw, MO

CITY'S EDGE
QUILT SHOP & SEWING CENTER

From Fabric & Notions to Sewing Machines for beginner to advanced Sewist's, Quilters & Machine Embroidery!
We do Edge 2 Edge Longarm Quilting Service

616 W. MAIN STREET, WARSAW, MO
660-438-3177

Hours: Monday - Friday 10 AM - 5 PM • Saturday 9 AM - 3 PM
VISIT US ONLINE AT WWW.CITYSEDGESTUDIO.COM

JANOME
AUTHORIZED DEALER

NAPA **AUTO PARTS**

Warsaw Auto Marine & RV
1850 Commercial St. • Warsaw, MO 65355
(660) 438-2829 Office
napawarsaw559@gmail.com

ASE




324 MAIN STREET • WARSAW, MO 65355
(660) 438-4421

My Secret GARDEN
 Tuesday - Saturday
 11 AM - 2 PM
 660-438-2848
 420 Commercial Street, Warsaw, Missouri




PHONE **660-668-4646** TOLL-FREE **1-877-323-2208**



COLE CAMP PHARMACY

106 South Maple • Cole Camp, MO 65325

Mike Snell, R.Ph. Tammy Snell



WE'VE GOT TIRES!
 CAR • TRUCK • LAWN MOWER • TRACTOR

WE DO IT ALL!
 TIRES • LUBE • EXHAUST
 ALIGNMENTS • BRAKES







901 E. Main | Warsaw, MO | 438-3100

31 Chiropractic



292 S Highway 65
 Lincoln, Missouri 65338

660-460-3719

JEREMIAH MOSLEY, LLC
 Attorney & Counselor at Law
660.530.0103
 601 Commercial Street, Suite 3 | Post Office Box 1119 | Warsaw, MO 65355-1119
 fax: 660.530.4438
JEREMIAHMOSLEY.COM




WEAVER'S



EST. 1972

BODY SHOP LLC.

American & Foreign • Custom Painting
Fiberglass Repaired • Glass Installed
Insurance Work Welcome

750 E. Main St • Warsaw, MO

660-438-6717

FAST FRIENDLY SERVICE WITH THE BEST PRICES!

Beth's
OSAGE MINI-MART

915 E. Main St.

Warsaw, MO

660-438-9575



YOUR

#1

CRAPPIE

HEADQUARTERS

**GAS • BEER • BAIT • TACKLE
SPIRITS • GROCERIES**

- 7 AM - 11 PM/7 Days a Week
- Tournament Information & Entry Forms
- 5% Sunday Beer & Liquor

All major credit cards accepted

Wildlife Permits • All Live Bait • Block Ice • Lottery

OZARK
Salon
Lake Hair Do Care
660-438-2771

1896 East Main Street • Warsaw, Missouri
Men, Women, Children • Full Service Salon

HOURS
TUESDAY - FRIDAY
10:00 AM - 7:00 PM
SATURDAY
10:00 AM - 2:00 PM
MONDAY: BY APPOINTMENT ONLY
Stylists: *Melanie & Dawn*

Find us on
facebook. @ozarksalon

INKLOGICS
Benton County's Premier Tattoo Studio
(660) 438-2300

**117 E Main St
Warsaw, MO 65355**

Inklogics @ Facebook

25% OFF ON THE 4TH OF JULY
25% off - Military & Public
Service Personnel

M

**MAIN STREET
MUTUAL INSURANCE**



P 660.668.2445
F 660.668.4549



206 W. Main St.
Cole Camp, MO 65325



info@mainstreetmutual.com
www.mainstreetmutual.com

NAILINGS CONSTRUCTION



CALL TODAY FOR A FREE ESTIMATE - IMMEDIATE APPOINTMENTS AVAILABLE!

Now Offering Seamless Gutters For Every Home.

CALL US FOR...

DECKS • PORCHES • SCREEN ROOMS
ROOFING • WINDOWS • GARAGES
& MORE!

(660) 438-2680

We'll NAIL any project you have!

Licensed & Insured

CoCo Nails

660-438-5888



1651 COMMERCIAL ST. • #2
WARSAW, MO 65355

Monday 1pm - 6pm

Tuesday - Friday 9am - 6pm

Saturday 9am - 4pm

Sunday closed

Professional Nail Care

Main St

Monday - Friday 8-5
Closed 12:00 - 1:30 PM for Lunch

BARBER SHOP



(SAME GREAT PLACE!
NEW OWNERSHIP)

660.723.1727
181 W Main St. • Warsaw, MO



RE/MAX[®] of Warsaw

1605 Sunchase Dr., Warsaw, MO

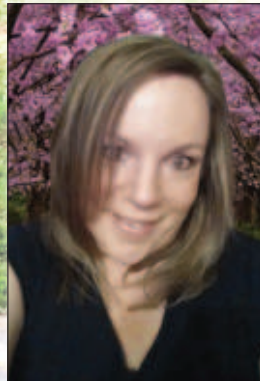
Toll Free: 888-438-4370 • Local: 660-438-7100

**STAY TUNED FOR OUR
NEW LOCATION!**



-teamHARE-

**Shelley Hare,
Broker/Owner**
(660) 438-7100
info@teamhare.com
www.teamhare.com



**Danielle Baker
Broker/Sales**
(816) 918-3657
danielleshomes4u@gmail.com
www.danielleshomes4u.com



**Krysti Woods
Broker/Sales**
(660) 723-4746
krystiwoods@aol.com
krystiwoods@remax.net
www.krystiwoods.com

Real Estate Specialists, Serving The Area for More Than 20 Years!

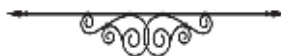
Antique Malls

Although Warsaw has plenty to offer when it comes to life at the lake and every-thing it incorporates, it's also a fantastic town for those who seek one of a kind antiques and handmade crafts. Down-town Warsaw has shops such as; Warsaw Antique Mall, Wooden Wagon, and Baray's Unique Boutique, as

well as Bill's Repurpose and Middle Bridge Antiques. Each of these unique shops contains hidden gems eagerly waiting to be picked out and brought home. One of Warsaw's more prominent antique groups is baseball memorabilia, mainly consisting of Kansas City Royals and St. Louis Cardinals items. The most

cherished antiques from this category relate to the Major League Baseball World Series of 1985, where the Royals and Cardinals faced off for the title of MLB Champions, which ended in a seven-game series victory for the Royals. Along with these baseball collectibles, Warsaw is home to innovative and admirable craft,

any of which are hand-made from its very own residents. Ranging from self-carved wooden coasters to land-scape paintings as the product of countless amounts of labor, Warsaw indeed offers something unique and appealing for every type of shopper.



ANTIQUE ENTHUSIASTS can find a wide variety of shops in Warsaw, Lincoln and Cole Camp.

DRAKE HARBOR TRADING CO.
221 West Main Street Warsaw, Missouri

Wine tastings • Beer
Canned Goods & Snacks
Clothing • Home decor
Back Patio • Fun Atmosphere

Open:
Thursday - Saturday:
8am - 10pm
Closed:
Sunday - Wednesday
(816) 213-6626

Find us on Facebook!

Just Teasin' Salon

Call Crystal, Tammy or Tara
Or Christie for Eyelash Extensions

Open Tuesday - Friday
8AM to 5 PM
Saturday 8AM to 12PM
Evenings by Appointment Only

235 W. Washington St.
660-438-3600

Fun Facts About Truman Lake

- Warsaw is known for being the "Spoonbill Capital of the World"
- The average depth of Truman Lake is 20 feet
- The average water temperature in the summertime is between 85 and 90 degrees
- There are 752.48 square miles in Benton County
- There are 46 square miles of water in Benton County
- The population of Warsaw is 2,197 (according to the 2018 census)
- Warsaw is 709 feet above sea level
- Warsaw is the county seat of Benton County
- Warsaw holds the highest recorded temperature in the state of Missouri,
118 degrees on July 14, 1954
- Warsaw holds the coldest recorded temperature in the state of Missouri,
-40 degrees on Feb. 13, 1905
- The Joe Dice Swinging Bridge was once destroyed by a tornado in June of 1924
- Warsaw is the home of one of the ten largest warm water fish hatcheries in the nation
- Warsaw is located amongst two of Missouri's largest lakes, Truman and Lake of the Ozarks

Bothwell
Regional Health Center

PEAK
SPORT & SPINE

OUR GOAL IS TO HELP YOU ACHIEVE YOUR GOALS.

1870 East, Commercial St. | Warsaw, MO 65355
660-438-5063

Physical Therapy | Hand Therapy | Sports Medicine

Steve Cannon Agency, LLC

Steve Cannon
1622 Commercial St
Warsaw, MO 65355-0336
SCannon@ShelterInsurance.com
ShelterInsurance.com/SteveCannon
P 660-438-5108

We're your Shield. We're your Shelter

Harry S. Truman Dam & Visitor Center

Managed by the U.S. Army Corps of Engineers, The Harry S. Truman Dam and Visitor Center offer nature enthusiasts and history buffs alike the experience of a lifetime. The dam and reservoir were built with the purpose of flood control, hydroelectric power production, fish and wildlife management, and recreational use. Truman Reservoir is, in fact, the largest flood control reservoir in the state of Missouri.

The visitor center displays dinosaur bones found around the area when the dam, reservoir, and center were under construction. Inside the center, you will find an observation deck overlooking one of Missouri's most popular recre-

ation lakes, Truman Lake. AN observation deck is located outside of the center, around the base, and offers a tremendous view from outdoors. The center is open daily from 9 AM to 5 PM from Memorial Day weekend through Halloween. Admission is free and more information on daily events held can be found by calling 660-438-2216.

Take a hike on one of the numerous trails surrounding the grounds to get a glimpse of some of the area's wildlife while enjoying the magnificent views of the lake. Don't forget to explore the 1800's buildings found on the center's grounds, including the historical Hooper House, Concord Schoolhouse, an

1850's replica of a pioneer homestead, and the Kaysinger General Store, where you can purchase goods from the era.

Deer And Turkey Seasons

Around Truman Lake

Deer: Archery 09/15/2015 - 11/13/2015

11/25/2015 - 01/15/2016

Deer: Firearms (Main Portion)

11/14/2015 - 11/24/2015

Deer: Firearms, Alternative Methods

12/19/2015 - 12/29/2015

Deer: Firearms, Antlerless: In open areas 11/25/2015 - 12/06/2015

Deer: Firearms, Urban: In open areas

10/09/2015 - 10/12/2015

Deer: Firearms, Youth

10/31/2015 - 11/01/2015

01/02/2016 - 01/03/2016

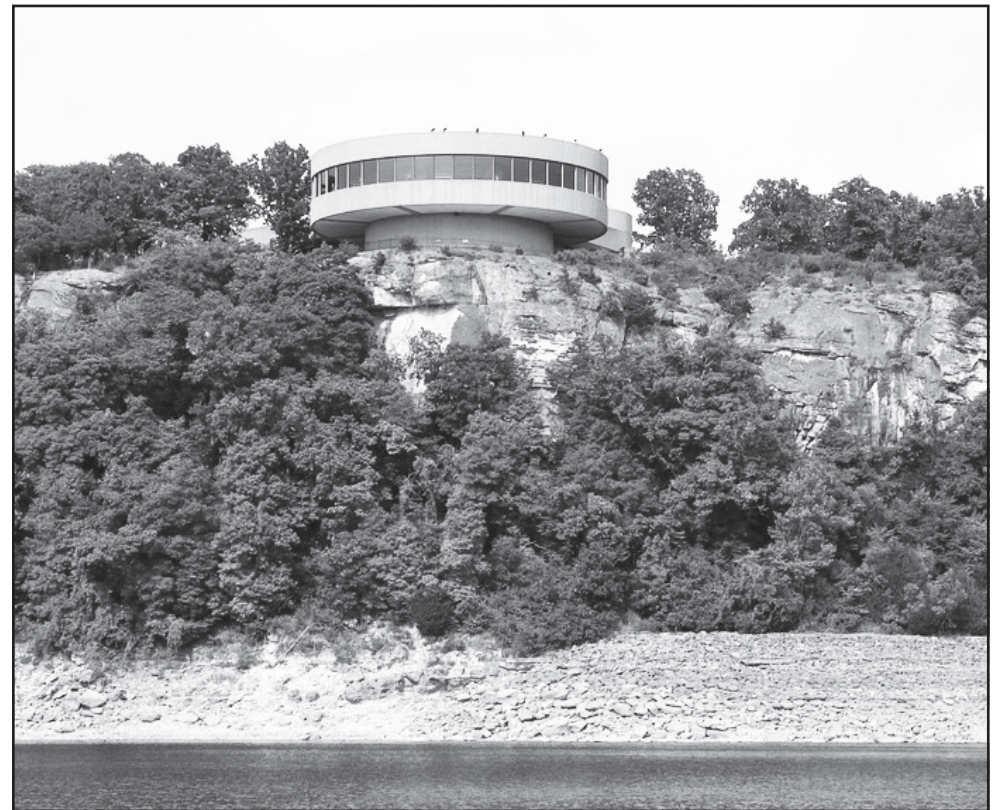
Turkey: Archery

09/15/2015 - 11/13/2015

11/25/2015 - 01/15/2016

Turkey: Fall Firearms

10/01/2015 - 10/31/2015



THE VISITOR CENTER on Kaysinger Bluff provides a bird's eye view of the dam and lake area.



STERLING AVENUE AUTO SERVICE

TIRES • BRAKES • DIAGNOSTICS
COMPLETE AUTO REPAIR

1841 East Main Street

Warsaw Missouri

(660) 438-4599

Hours: 8 AM to 5 PM

Monday - Friday



Contact

6 6 0 . 2 3 3 . 1 6 4 7



rlc styles salon



rc.styles.salon

WALK-IN CLINIC

No Appointment Necessary

Monday-Friday:
8 a.m.-4:45 p.m.

Saturday:
8 a.m.-2:45 p.m.

Let us show you our Golden Standard of *Care*.

1771 Commercial Street



gvmh.org | [@chooseGVMH](https://www.instagram.com/chooseGVMH)

GET YOUR KICKS

Come In For The
Fun & Outside
Activities In The
Beer Garden!

312 Benton St.
Warsaw, MO

(660) 438-2448

AT NIX HORSESHOE BAR

See You There!

Pitts
Over
40
Years
Since 1971
HOMES, INC.

*“For A Home That Fits,
Choose Pitts”*

29101 Old Hwy. 65,
Dam Access Road, Warsaw, Mo

660-438-2505

www.pittshomesinc.net



AUTO • HOME • LIFE

It's your
getaway

Whether you're enjoying the roar of an engine on a tight turn or dropping a line in your favorite fishing hole...it's your getaway.

Shelter's boat insurance lets you relax and enjoy the ride. Ask your agent about our competitive rates and coverage options. Let us quote your boat - or personal watercraft.

It's your getaway, and it's important to you. Let us help you Shelter it.



LeeAnn Beaman

Agent

190 S. HWY. 65

Lincoln, MO. 65338-0225

(660) 547-0099

We're your Shield. We're your Shelter.
ShelterInsurance.com

Fish Limits & Size Requirements

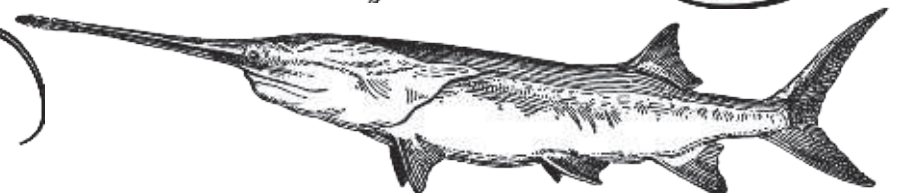
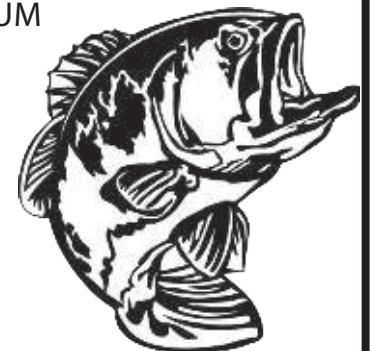
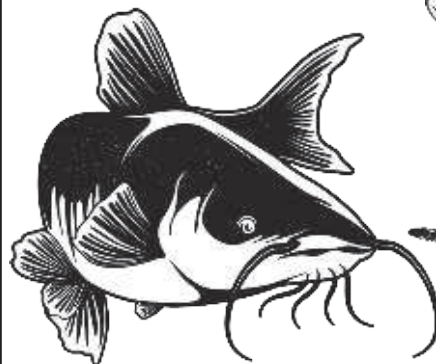
Crappie must be at least 9 inches in length, from the tip of the snout to the end of the tail, and no more than 15 can be kept in a day. **Blue catfish** have a slot length restriction, which means they cannot be kept if they fall within the length range. On Truman and its tributaries, this slot is any fish between 26 and 34 inches. Only 10 bluecats can be kept per day, and only 2 of those kept can be over 34". This means you can keep 8-10 blues as long as they are less than 26" long.

Paddlefish, on the other hand, must be at least 34 inches long to be kept.

Bass: Black, including largemouth and smallmouth, 15" MINIMUM

Spotted: 12" MINIMUM

Crappie: 9" MINIMUM



Safe Boating is Happy Boating

Watercraft safety is paramount at all times and becomes even more important during the busy summer months. Missouri law has restrictions in place to assure everyone's safety and officers on the water to ensure it is obeyed. Any person operating a motorboat or personal watercraft must be at least 14 years of age unless under the direct, onboard supervision of a parent, guardian, or person 16 years of age or older.

Anyone born after January 1st, 1984, is required to take a boater education course, available online, and receive approval from the Missouri State Highway Patrol. Upon approval, a card will be issued that must be carried with the individual at all times while operating watercraft. Anyone requiring the card but not carrying it will be fined. Even those not required to take the course can benefit from it. Not only will they become a more educated boater, they may be able to save on boat and PWC insurance. There is no age restriction on taking the course. To take the course, visit www.boat-ed.com/Missouri.

Motorboats and motorized personal watercraft must be titled and permitted to operate on Truman Reservoir and Lake of the Ozarks: see the Missouri Department of Revenue website for details. In order to be titled and permitted, the craft must undergo a safety inspection which includes, but is not limited to, the availability of personal flotation devices and operational navigation lights. Full details can be found in the handbook, available at www.boat-ed.com/Missouri. Upon satisfactory completion of the safety inspection, a decal will be awarded and affixed by a Highway Patrol trooper behind the registration number of the watercraft.

Some basic rules and courtesies apply to all who wish to enjoy the water, please obey and help keep everyone safe!

Know your vessel!

The maximum safe weight and number of occupants can be found on the capacity information plate, usually located near the operator's position or on the transom. If the vessel does not have a plate affixed, refer to the owner's

manual.

Encountering other vessels:

Although no craft has the legal right-of-way such as is law on highways and streets, there are courtesies that every boater should know and honor. It is the responsibility of both operators to avoid collision!

When two craft meet on the water, one is referred to as the "stand-on" vessel and the other is the "give-way" vessel.

If both craft are motorized and meeting head-on, both should give way and pass to the right, or starboard. If two motor craft are crossing, the vessel on the operator's left (port) should give way, while a vessel to the operator's right has the right to stand on. When one craft comes from behind to overtake another, the vessel in front is the stand-on, while the one doing the overtaking needs to give way.

In the case of motorized craft meeting non-motorized craft, or sail boats, the powered craft is always the give-way vessel, except in the rare case of a sail boat overtaking a motorboat: the vessel coming from behind is always the give-

way vessel!

The lakes are also popular for kayaks and canoes, so be aware of all the little guys trying to safely enjoy the water too! If your vessel is bigger and faster, you should always give way to the smaller, man-powered craft.

AND ALWAYS REMEMBER, OPERATING ANY WATERCRAFT WHILE UNDER THE INFLUENCE OF ALCOHOL, DRUGS, OR CONTROLLED SUBSTANCES IS ILLEGAL AND UNSAFE.

Missouri has zero tolerance for anyone behind the wheel while intoxicated, which means a blood alcohol content of 0.08 or above. Alcohol and watercraft do no mix! This includes wakeboards, water skis, inflatable tube, kayaks, canoes, or other such devices. Operating any

watercraft or other such device on the water immediately confers your consent to be tested and refusal to do so can result in arrest. If testing results

are positive, you can be arrested, fined, and lose your license.

Be safe, be smart, and HAVE FUN!



THE BOAT RAMP on Drake Harbor provides access to the Osage Arm of Lake of the Ozarks.

Warsaw
Chamber of Commerce
 660-438-5922
WWW.WARSAWCHAMBEROFCOMMERCE.COM

181 W. Harrison St., Warsaw, MO 65355
 (660) 438-5922

facebook

COUNTRY
— CHARM —

OFFERING CUSTOM DECOR AND APPAREL

109 E. MAIN ST. WARSAW, MO



204 Seminary St., Warsaw • (660) 438-6993
www.sunlakespt.com

FREE CONSULTATION

Have you wondered if you or a friend or family member have a problem that might benefit from physical therapy - either an injury or condition that interferes with sports or quality of life? Or perhaps you are interested in knowing if a "Performance Enhancement Program" might improve your game or help your child get a scholarship.

Well, stop wondering and find out! We offer a no-charge consultation with a trained therapist who will spend a few minutes with you to understand your situation and your goals. We will tell you honestly if we think we can help and, if so, what your program might involve. If you need a physician referral, we can help you get to your own doctor or we can recommend one if you are between doctors.

Simply fill out the form below for yourself or your friend and bring it to our front desk. Or you can call the information into our office at the phone number listed above. We will schedule and get you on your way.

REQUEST FOR A FREE CONSULTATION



204 Seminary St., Warsaw • (660) 438-6993
www.sunlakespt.com

Your Name _____

Friend/Family Name _____

Phone Number _____ Date _____

What problem or interest do you or your friend have?

When is a good time for us to contact you or your friend?



660-438-4600 www.AnglersPortMarine.com
13979 Highway 7 Warsaw, MO 65355



WE BELIEVE YOUR TIME ON
THE WATER IS VALUABLE.



WE BELIEVE a boat is your permanent
ticket to a vacation.
And WE BELIEVE you'll find it here.

If your search for a new boat hasn't been as relaxing and as fruitful as you'd hoped, come visit us at Angler's Port Marine. We have the largest selection of Caymas, Lowe, Phoenix and Mercury in the midwest. We'll help you find the relaxation you've been looking for.

Warsaw, MO | (660) 438-4600
AnglersPortMarine.com
Dons@AnglersPortMarine.com



R-BAR
& GRILL

FOOD, DRINKS & FUN

(660) 438-RBAR

STEAK ★ BURGERS

SEAFOOD ★ PASTA

Home of the famous Bacon Bloody Mary

Local Beers on Tap

31390 WARSAW AVENUE: 65 HWY - TAKE THE WHITE BRANCH EXIT