

# THE CASTAWAY

SUMMER 2023

**A Guide to Truman Lake  
& Lake of the Ozarks**

*A Benton County Enterprise Publication*



# There's No Place Like Home.

...and there's no better place than Warsaw  
and the surrounding area to  
live, work, or play.

**HAWTHORN BANK SUPPORTS OUR  
VETERANS AND AMERICA'S FREEDOM**



- Free On-Line Banking
- Free Bill Pay
- Special Travel Opportunities
- Special CD Rates
- Loan Decision Made Locally



Home Loans  
Business Loans  
Online Banking  
Cash Management  
Elite Advantage Club

Please call or  
stop by today!



NASDAQ: HWBK  
NMLS: # 409185



*Hawthorn*  
BANK®

Your Community Bank Since 1891  
Warsaw Banking Centers

North Town  
Banking Center  
1891 Commercial

(660) 438-2847 | hawthornbank.com



## Non-Stop Family Entertainment

Family entertainment is abundant around the lake area. Places such as the Warsaw Municipal Swimming Pool, Boonslick Regional Library, Truman Lake Opry, and Jesters Bowling Alley are just waiting for people like you to come to visit.

### WARSAW MUNICIPAL SWIMMING POOL

Located in Lay Park at 1009 West Jackson Street, the pool offers hours of family friendly summertime fun. Amenities include a diving board, zero entry wading pool, a giant water slide, lap pool, concessions, and water features for the littles. Our professionally trained and friendly lifeguards are on hand and ready to help. Open swim hours are Monday through Saturday 12pm-7pm and Sunday 12pm-5pm. The cost is \$4.50. Water aerobics classes are held Monday through Friday from 10am-11am as well as Wednesday and Thursday from 7pm-8pm. Swimming lessons are available on Saturdays between 9am and noon. Pool parties also available, call 660-428-2199

for availability and more information.

### BOONSLICK REGIONAL LIBRARY

The Boonslick Regional Library provides reading enjoyment for all ages, including reading programs held all year long. The Warsaw library offers several computers for the use of both adults and children. The library is located at 106 West Jackson Street; in the heart of Warsaw. Hours of operation are from 9:00 AM - 5:30 PM on Monday through Saturday. Contact the library at 660-438-5211 for more information.

### JESTER'S BOWLING ALLEY

Jester's Bowling Alley is a hotspot for tourists and locals alike, the perfect place for entertainment after a day full of fun on the lake. Jester's is located just up 65 Highway towards Lincoln at 23939, US Hwy 65. An arcade and bowling fun await you at Jesters. To hear about their discounts and specials, give them a call at 660-547-BOWL.

## CASTAWAY MAGAZINE 2023

The Castaway is published by the Benton County Enterprise Company, Inc.

Enterprise Building,  
107 Main St.  
Warsaw, Missouri  
65355  
Telephone  
660-438-6312

[bentoncountyenterprise.com](http://bentoncountyenterprise.com)

### Publisher

James Mahlon  
White

### Editor-In-Chief

Adam Howe

### Design Director

Stephanie Adair

### Sales Director

Mac Vorce

### Content Director

Jen Bradshaw

### ON THE COVER:

The summer season is the highlight of the year at Truman Lake & Lake Of The Ozarks where Taylor Howe & Aspen Whitaker enjoyed an afternoon on the pontoon boat.

## Welcome to Warsaw

Warsaw's heritage includes outdoor adventure, travel, and the lakes. The two biggest lakes in Missouri provide fishing and summer lake-life fun. The numerous trail systems are built along both lake's edges, spanned by Joe Dice Swinging. You will find shopping and dining experiences distinctive to Warsaw.

Truman Lake and Lake of the Ozarks are prime destinations for any and all lake life fun!

Numerous shops and restaurants overlooking Drake Harbor.

- Disc golf
- Singletrack mountain

bike trails at Truman Lake Mountain Bike Park and Shawnee Bend Bluff Trails, plus miles of flat riverfront levee trails and the Joe Dice Swinging Bridge.

- Pickleball courts
- Warsaw Municipal Pool
- Shawnee Bend Golf Course

- Swim Beaches
- And More!

Warsaw's outdoor adventure vibe is complemented by a unique blend of old-time charisma and modern-day attributes. The re-vitalized downtown is home to many unique boutiques, gift shops, restaurants, and a great view of Drake Harbor. The

many festivals throughout the year utilize the vibrant downtown Main Street for music, food, dancing, crafts, art, parades and more.



**GIVING A WARM WELCOME TO WARSAW** is Building Inspector Brad Blakenship, Officer John Hargrave, City Clerk Jessica Kendall, Utilities Clerk Jill Cobb, Kylie Hargrave and Warsaw Mayor Eddie Simons. Warsaw was once known as the Steamboat Capital of the World and the Gunstock Factory of The World. Today the area is known for being at the heart of Truman Lake and Lake of the Ozarks along with warm hospitality.







**SPOONBILL  
HEADQUARTERS  
FOR THE  
LAKE  
OF THE  
OZARKS!**

**25842 OLD OARHOUSE ROAD,  
WARSAW, MO 65355**

**660-438-5398**

**HOURS**

Thursday 11-9  
Friday 11-10  
Saturday 10 - 10  
Sunday 10-8  
Monday 11-9

Restaurant Specials are  
Friday • All you can eat Catfish  
Saturday • 1 lb Crab Legs Dinner  
Sunday • 8oz Bourbon Steak  
Friday – Sunday • Ricks Famous Prime  
Rib from 12oz to 24oz cuts  
Offering Gas, Ice, Beer and  
Boating supplies on the dock  
**FIREWORKS July 8th at 9:30pm!!**



**HOURS:**

Monday-Thursday  
11:00 AM - 9:00 PM  
Friday-Saturday  
11:00 AM - 10:00 PM  
Sunday  
11:00 AM - 8:00 PM

**909 East Main • Warsaw, MO**

**AXE THROWING  
&**



Come and hang out for a great  
time. Featuring touch tunes  
for music and ice cream factory  
pints to add to a great time!

**(660) 723-4232**



**Your Source for Information at The Lake: [www.warsawchamberofcommerce.com](http://www.warsawchamberofcommerce.com)**



*Warsaw  
Fireworks Displays*

**July 1st- Fireworks at the Harbor**

**July 2nd- Osage Bluff Fireworks**

**July 3rd- Cody's Bait and Tackle**

**July 4th- American Legion**

**July 8th- Rick's Oar House**



© Shiloah Douglas

**FANTASTIC FIREWORKS**, light the night sky from multiple celebrations around the lake, including Osage Bluff where a big show will get underway on July 2.



**Hours: Tuesday - Thursday • 11:00 AM to 8:00 PM**

**Friday & Saturday • 11:00 AM to 9:00 PM**

**Hwy 83, Warsaw MO**

**Wildcat Drive**

**Carry Out 660-438-6311**

**SERVING FOR OVER 60 YEARS**

**BEEF • HAM • RIBS • PORK**

**DIVERSE MENU    ORIENTAL FOOD**

**EGG ROLLS • CRAB RANGOON**

**SWEET + SOUR PORK • CASHEW CHICKEN**

**AND MUCH MORE!**

**ONLY PIT BBQ**

**IN THE AREA!**

**OLDEST RESTAURANT IN THE AREA**



# Dedicated to Providing You Our Golden Standard of *Care*

## Top-Rated Providers



Highly trained,  
friendly medical experts.

## Personalized Care You Need



Full range of services  
and specialty care.

## Conveniently Located Facilities



High tech facilities  
close to you.



**Golden  
Valley  
Memorial**  
HEALTHCARE

[gvmh.org](http://gvmh.org) | [@chooseGVMH](https://www.instagram.com/chooseGVMH)

Clinton | Osceola | Warsaw | Windsor

660.890.7300



# Places To Lay Your Head- Stay A While

## **CAMPGROUNDS AND RV PARKS**

**Angler's Camp RV Park** • 660-438-6889  
**Country Lakes R.V. Park** • 660-438-8400  
**Deer Rest Campground** • 660-438-3872  
**Edgewater R.V. Park** • 660-438-0203  
**Fairfield R.V. Park** • 660-438-9765  
**Grand River Resort R.V. Park** • 660-438-274  
**Harry S. Truman State Park** • 660-438-7711  
**Kirn Lakeview R.V. Park** • 660-438-3761  
**Lakeview R.V. Park** • 660-438-6373  
**Long Shoal** • 660-438-2342  
**Osage Bluff** • 660-438-3873  
**Our Slice of Paradise** • 660-438-5333  
**Outback R.V. Park** • 660-438-7637  
**Pecan Grove Campground** • 660-438-7688

## **HOTELS/MOTELS**

**Country Lakes Motors**  
 32550 Highway MM, Warsaw  
 660-438-8400

**Hidden Lake Motel**  
 11958, Hidden Lake Dr.  
 660-428-1208

**Rick's Oar House**  
 BB Highway  
 660-438-5398

**Parkfield Inn**  
 151 N. Dam Access Rd.  
 660-438-2474  
[www.parkfieldinn.com](http://www.parkfieldinn.com)

**Grand River Resort**  
 11919 Hwy 7  
 660-438-2741  
[www.grandriverresort.com](http://www.grandriverresort.com)

**Lake Hills Motel**  
 31535 Hwy 88  
 660-438-5191  
[www.lake-motel.com](http://www.lake-motel.com)

**Osage Bluff Lodge**  
 Hwy 83  
 660-438-289  
[www.osageblufflodge.com](http://www.osageblufflodge.com)

**Parkside Cabins**  
 Warsaw  
 660-438-8399

**Reed's R.V. Park & Storage** • 660-438-2068  
**Rocky Top R.V. Park** • 660-438-5097  
**Shady Grove R.V. Park & Campground** • 660-477-0134  
**Shady Oaks Park** • 660-438-5097  
**Sterett Creek** • 660-438-2821  
**Southview R.V. Park** • 660-438-2895  
**The Last Resort** • 660-438-6691  
**The Old Oar House Inn** • 660-438-5398  
**Thibaut Point** • 660-438-2767  
**Tomb Stone Island R.V. Park** • 660-438-1033  
**Truman Dam R.V. Park** • 660-438-9678  
**Truman Lake Resort Fairfield** • 660-438-7576  
**TT Highway Camp Center** • 660-547-0077  
**Waterfront R.V. Park** • 660-438-7274  
**White Branch Marina R.V. Park** • 660-438-6344

**Pecan Grove Cabins**  
 30249 N. Dam Access Rd.  
 660-438-7688

**R&C Adventures**  
 12049 Hwy 7  
 660-438-5933

**Reel & Trigger Resort**  
 29720 Hwy UU  
 1-877-782-8393  
[www.reelandtrigger.com](http://www.reelandtrigger.com)

**River's End Motel**  
 31635 Hwy 83  
 660-438-2878  
[www.riversendmotel.com](http://www.riversendmotel.com)

**Sterett Creek Cabins**  
 18597 Sterett Creek Dr.  
 660-438-2251  
[www.sterrettcreekvillage.com](http://www.sterrettcreekvillage.com)

**Sterett Creek Motel**  
 18321 Marina Rd  
 660-438-2821  
[www.sterettcreek.com](http://www.sterettcreek.com)

**Lakes Inn Motel**  
 11603 Commercial  
 660-438-2882  
[www.lakesinmo.com](http://www.lakesinmo.com)

**Truman West Side Suites**  
 13900 Hwy 7  
 660-438-5176

**Uncle Gabby's Cabin Rentals**  
 11015 Hwy 7  
 660-477-9448  
[www.unclegabbyscabins.com](http://www.unclegabbyscabins.com)

**Uncle Gabby's Motel**  
 10825 Hwy 7  
 660-477-3331  
[www.unclegabbys.com](http://www.unclegabbys.com)



**BOAT & AUTO  
 RV & CAMPERS  
 AUTO SOUNDS  
 MOBILE DETAILING  
 WINDOW TINTING**



**ANTHONY BRUCE  
 913-752-7893**

*"We Take Pride In Our Work"*



# ADVANTAGE REAL ESTATE

**(660) 438-0070**

1699 Commercial Street  
Warsaw, MO

[www.advantageland.info](http://www.advantageland.info)



**Pam Grobe**  
660-525-0740

[WWW.PAMATTHELAKE.COM](http://WWW.PAMATTHELAKE.COM)



**Mary Shinn**  
660-221-7603



**LeeAnn Petree**  
816-838-2534



**NATIONWIDE EXPOSURE FOR LISTINGS**



*Julie's*  
**ARTILLERY HILL  
STORAGE**



Owned and Operated by  
Rich and Julie Guyette

5x10 - 10x10 - 10x20 • Security Gate • 24 Hour Security Cameras  
South of Warsaw on Hwy MM (Wildcat Drive)  
Across from the American Legion Post #217 • 32656 Pleasant Ridge Dr., Warsaw, MO  
**660-438-5113    660-723-3939**



**CAN'T BEAR TO STAY ANYWHERE ELSE!**

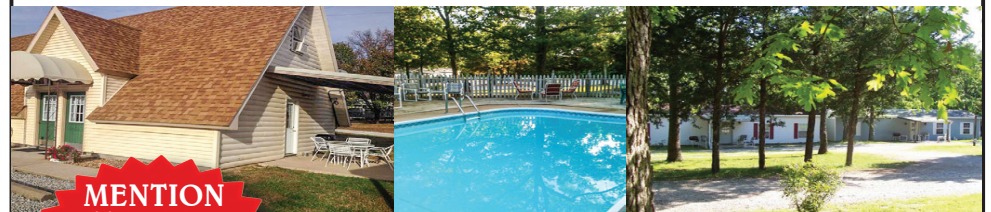
**CABINS • KITCHENS • POOL**

In the Heart of the Truman Lake Recreational Area!

11919 Hwy 7

Warsaw, MO 65355

**660-438-2743**



**MENTION  
THIS AD  
FOR A  
DISCOUNT!**

[www.grandriverresort.net](http://www.grandriverresort.net)



@grandriverwarsaw

**TOLLIVER'S SALES & SERVICE**  
(Lincoln's Tire Store)

**FOR ALL YOUR AUTOMOTIVE NEEDS**

**BRAKES • OIL CHANGES  
INSPECTIONS • TIRES**

**FOR FAST TOWING SERVICES**

**CALL 660-287-4849**

498 North 65 Highway, Lincoln, MO  
Office: (660) 547-2277



# Area Eats

**B&B Bar and Restaurant**  
25848 Highway BB, Warsaw  
660-438-2131

**Lincoln Inn**  
N.65 Hwy, Lincoln  
660-547-3417

660-438-7660  
**The Yellow Deli**  
145 W. Main St, Warsaw  
660-438-2581

**Benton Ridge Winery**  
25518 Fitzpatrick Ave. Warsaw  
660-776-WINE

**Long Shoal Marina  
& Restaurant**  
Hwy 7, Warsaw  
660-438-2841

**Shirley's Highway Café**  
N. 65 Hwy, Lincoln  
660-547-3500

**Cook Shack BBQ**  
8825 Highway ZZ, Iconium  
417-646-5516

**McDonald's of Warsaw**  
Hwy 65, Warsaw  
660-438-7612

**Sonic Drive-In of Warsaw**  
2003 Commercial St, Warsaw  
660-438-6200

**Cosmic Café**  
504 W. Main St, Warsaw  
660-438-6171

**Mom's Kitchen**  
14216 Hwy 7, Warsaw  
660-438-2278

**Subway of Warsaw**  
1886 Commercial St, Warsaw  
660-438-4234

**Cow Patties**  
604 W. Main St, Warsaw  
660-438-6046

**Osage Bluff Restaurant**  
17470 Osage Bluff Rd, Warsaw  
660-438-6464

**Sunsetters Bar & Grill**  
14950 State Park Rd E Warsaw  
660-438-2423

**Dairy Queen**  
103 Progress Dr.  
660-223-0044

**Pizza Hut of Warsaw**  
910 Dogwood St, Warsaw  
660-438-6464

**Taco Bell**  
1830 Commercial St.  
660-223-1523

**El Camino Real**  
120 Polk St, Warsaw  
660-438-9994

**R-Bar**  
31390 Warsaw Ave.  
66-438-RBAR

**Taco Villa**  
Truman Hills Mall, Warsaw  
660-438-6027

**El Centenario**  
840 Main St.  
660-723-2711

**R&R BBQ & Custom Food**  
10966 Hwy 7, Warsaw  
816-945-7722

**The Drunken Minnow Grill**  
18174 Marina Rd, Warsaw  
660-438-2880

**Estes Drive Inn**  
525 N. 65 Hwy, Lincoln  
660-547-3516

**Redwing Coffee & Roastery**  
936 E. Main St, Warsaw  
660-438-9424

**Nee Nee's Italian Steak-  
house and Catering**  
324 West Main  
Warsaw, MO  
660-428-5877

**Hideaway Bar & Grill**  
Hwy 7, Warsaw  
660-438-5106

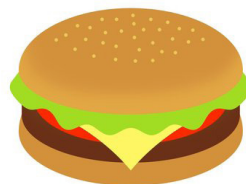
**Rick's Oar House Inn**  
Hwy BB, Warsaw  
660-438-5398

**Hidden Lake Lounge &  
Restaurant**  
Hwy 7, Warsaw  
660-428-1208

**The Landing Bistro &  
Lounge**  
305 W. Main St, Warsaw  
660-438-2732

**Hilltop BBQ**  
31594 Hwy 83, Warsaw  
660-438-6311

**The Rusty Skillet**  
248 W. Main St, Warsaw



# Warsaw Fitness



**NEW LOCATION:  
1507 Commercial St.  
in Warsaw!**

**Open 24/7!  
No Contracts/Sign-Up Fees  
Brand New Equipment  
New HVAC • Better parking!**



## Cow Patties Restaurant

**Full Menu Served All Day**

**Home of the 16 oz. Cow Pattie Hamburger**

**Hours**  
Mon-Sat: 6 AM to 2 PM  
Sunday: 6 AM to 1 PM

604 W. Main Street  
Warsaw, MO  
660-438-6046

# Benton County Tire

**WE'VE GOT TIRES!**  
CAR • TRUCK • LAWN MOWER • TRACTOR

**WE DO IT ALL!**  
TIRES • LUBE • EXHAUST  
ALIGNMENTS • BRAKES



Firestone

YOKOHAMA



901 E. Main | Warsaw, MO | 438-3100





**COSMIC CAFE**  
BREAKFAST LUNCH & COFFEE

**DRIVE THRU!  
FULL BREAKFAST MENU!  
AND AS ALWAYS...  
SPECIALTY COFFEE!**

**Monday-Saturday 7am 3pm  
Breakfast 7-11 • Lunch 11-2 daily  
504 West Main St., Warsaw**

**660-438-6171**



## Because s'mores can be for breakfast

As your local Farmers® agent, I can offer you a Motor Home or Travel Trailer policy that helps you cover the things that matter when you're out on an adventure. You can just enjoy the great outdoors.

**A more secure future doesn't just happen.  
Call me today to plan ahead!**



**660-438-8898**

**Shawn Poyser**

Your Local Agent | License 3001465847

1650 COMMERCIAL ST STE A

WARSAW, MO 65355

[spoyser@farmersagent.com](mailto:spoyser@farmersagent.com)

Advertisement produced on behalf of the following specific insurers and seeking to obtain business for insurance underwritten by Farmers Insurance Exchange, Fire Insurance Exchange, Truck Insurance Exchange, Mid-Century Insurance Company, Farmers Insurance Company of Washington (Bellevue, WA) or affiliates. In TX: insurance is underwritten by Farmers Insurance Exchange, Fire Insurance Exchange, Truck Insurance Exchange, Mid-Century Insurance Company, Farmers Texas County Mutual Insurance Company, Mid-Century Insurance Company of Texas or Texas Farmers Insurance Company. In NY: insurance is underwritten by Farmers Insurance Exchange, Truck Insurance Exchange, Mid-Century Insurance Company or Farmers New Century Insurance Company. Home office, Los Angeles, CA.

Each insurer has sole financial responsibility for its own insurance. List of all insurers and states where licensed at [farmers.com/companies/state/](http://farmers.com/companies/state/). Not all insurers are authorized in all states. Not all products, coverages, and discounts are available in every state and may vary by state. Restrictions, exclusions, limits, and conditions apply. See agent for details.





## Parks & Recreation Galore!

Lakes and rivers have played a big role in Warsaw's history and are still important today. A river town in the steamboat era, Warsaw was where raw materials from the wilderness and the goods people needed to survive were shipped and traded. Steamboat Landing in Drake Harbor now meanders approximately where the steamboats were docked. Warsaw now has many parks that celebrate its history and provide diverse opportunities to enjoy the outdoors with family and friends.

Drake Harbor sits about a mile downriver from Truman Dam and is a focal point of Warsaw's numerous parks. It has many friendly features including the newly installed Steamboat Landing

Playground. Drake Harbor is also a great place to walk, jog, play sports and games, or simply enjoy nature. There is also a boat ramp and public restrooms. Drake Harbor also connects the riverfront trails, which are flat chat, for 13 miles along either side of Lake of the Ozarks.

Other area parks include:

Truman Lake Mountain Bike Park: 13 miles of singletrack and doubletrack. Fast, flowy, and fun with views of Truman Lake. There is also a covered pavilion and picnic tables.

West Bledsoe Ferry: Connected to downtown by Joe Dice Swinging Bridge, the park has baseball and softball fields, and a playground.

East Bledsoe Ferry is home to a boat ramp, numerous

fishing docks, wide open fields, pavilions, picnic tables and barbecues. This is a popular fishing spot, as it sits directly below the gates of Truman Dam.

Shawnee Bend Park: Swim beach, disc golf, 5 miles of mountain bike/ hiking trails, two playgrounds, pavilions with picnic tables and barbecues, a boat ramp, and the 9-hole Shawnee Bend Golf Course.

M.K White Park: Just off Main Street, M.K White has disc golf, two pickleball courts, and is right next to the Osage Trail, part of the riverfront trails.

Lay Park: Lay Park is where the Warsaw Municipal Pool operates May-August, is home to Lumpe Field (baseball and softball) and has covered pavilions with picnic tables.



## Beaches And Swimming

Whether you prefer to swim by boat or enjoy a relaxing day of swimming and picnicking at one of the seven area beaches, there's always room for non-stop fun in Truman Lake.

The U.S. Army Corps of Engineers manages the beaches of Shawnee Bend, Long Shoal, Windsor

Crossing, Sparrowfoot, Berry Bend, Thibaut Point, and Harry S. Truman State Park. The beaches are typically open from May 15 through September 15, with hours being from 8:00 AM until dusk. The swimming areas are outlined with floating buoys and boats are prohibited in swimming

areas. No life guards are on duty. Alcohol, glass containers, and pets are not allowed on Corp -managed beaches. Swimming is prohibited around all boat ramps, courtesies docks, and immediately upstream and downstream of Truman Dam.





Think CDs are boring? That's the point

Bank-issued,  
FDIC-insured

**5.25** %

1-year APY\*

Call or visit your local financial advisor today.



**Rickie Caswell, AAMS™**

Financial Advisor

1620 Commercial  
Warsaw, MO 65355  
660-438-2642

\* Annual Percentage Yield (APY) effective 05/16/2023. CDs offered by Edward Jones are bank-issued and FDIC-insured up to \$250,000 (principal and interest accrued but not yet paid) per depositor, per insured depository institution, for each account ownership category. Please visit [www.fdic.gov](http://www.fdic.gov) or contact your financial advisor for additional information. Subject to availability and price change. CD values are subject to interest rate risk such that when interest rates rise, the prices of CDs can decrease. If CDs are sold prior to maturity, the investor can lose principal value. FDIC insurance does not cover losses in market value. Early withdrawal may not be permitted. Yields quoted are net of all commissions. CDs require the distribution of interest and do not allow interest to compound. CDs offered through Edward Jones are issued by banks and thrifts nationwide. All CDs sold by Edward Jones are registered with the Depository Trust Corp. (DTC).



- Clothing
- Jewelry
- Handbags

- Shoes
- Home Decor
- Unique Items



303 Ice Cream located inside Statuary Gardens

Hours:

- Sunday 12pm to 7pm
- Monday 1pm to 5pm
- Tuesday 1pm to 5pm
- Wednesday 1pm to 5pm
- Thursday 1pm to 5pm
- Friday 1pm to 9pm
- Saturday 12pm to 7pm

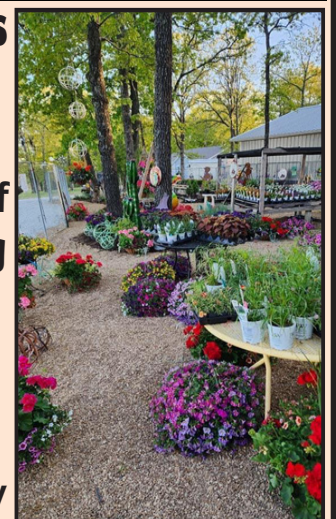
**233 W Main, Warsaw, MO**  
**(660) 359-1812**



**Statuary Gardens**

**34479 Hwy M.  
Edwards, MO**

**Large selection of  
annuals, hanging  
baskets,  
perennials,  
ornamental iron,  
wind chimes &  
concrete statuary**



Hours:

Tues. - Sat. 9am to 4pm





# ALCANTARA

VETERINARY HOSPITAL

1252 Commercial Street • Warsaw, Missouri 65355

660-438-6493

[alcantaravethospital.com](http://alcantaravethospital.com)

At Alcantara Veterinary Hospital, we offer a variety of services to care for your pet. If you have any questions or would like more information on how we can care for your pet, please contact us today.

DIAGNOSTICS • EXAMS & CONSULTATIONS  
NUTRITIONAL COUNSELING • SURGERY • VACCINATIONS  
MICROCHIPPING • PREVENTATIVE MEDICINE  
PHARMACY • BOARDING

We believe in treating every patient as if they were our own pet.



## Fun Facts About Truman Lake

- Warsaw is known for being the “Spoonbill Capital of the World”
- The average depth of Truman Lake is 20 feet
- The average water temperature in the summertime is between 85 and 90 degrees
- There are 752.48 square miles in Benton County
- There are 46 square miles of water in Benton County
- The population of Warsaw is 2,197 (according to the 2018 census)
- Warsaw is 709 feet above sea level
- Warsaw is the county seat of Benton County
- Warsaw holds the highest recorded temperature in the state of Missouri,  
118 degrees on July 14, 1954
- Warsaw holds the coldest recorded temperature in the state of Missouri,  
-40 degrees on Feb. 13, 1905
- The Joe Dice Swinging Bridge was once destroyed by a tornado in June of 1924
- Warsaw is the home of one of the ten largest warm water fish hatcheries in the nation
- Warsaw is located amongst two of Missouri’s largest lakes, Truman and Lake of the Ozarks



JANOME  
AUTHORIZED DEALER

## CITY'S EDGE Quilt Shop & Sewing Center

On-line Shopping at [www.citysedgestudio.com](http://www.citysedgestudio.com)  
In store and Curbside Pick-up available.

*Start them off right!*

Get the best tools for the best experience!

Give the perfect gift of creativity with a new Janome. We carry sewing machines for beginners thru advanced sewers.



- FREE Start up classes and more with every machine purchase
- Edge to Edge Quilting Services - Quick Turnaround
- Quality Fabrics, Patterns, & Notions

Hours Mon - Fri 10a-5p, Sat 9-3p

616 W. MAIN STREET, PO BOX 38

WARSAW, MO 65355

660-438-3177

Visit us on line at [www.citysedgestudio.com](http://www.citysedgestudio.com)

# WEAVER'S



EST. 1972

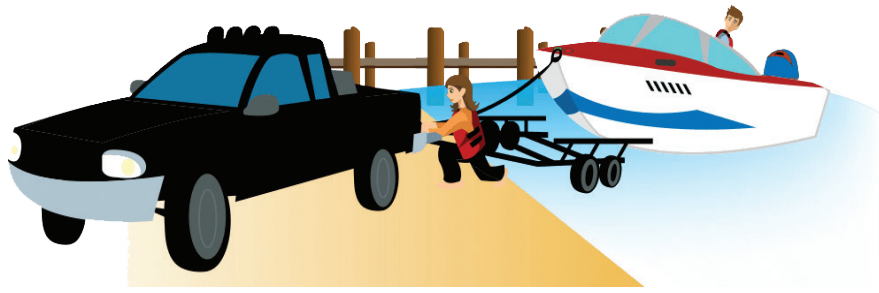
## BODY SHOP LLC.

### American & Foreign Insurance Work Welcome

750 E. Main St • Warsaw, MO

660-438-6717





## Boat Ramps & Fees

There are numerous boat ramps accessible around Truman Lake that are managed by the U.S. Army Corps of Engineers. Self-pay stations are located at the entrance of each pay ramp and are set up for daily use. Annual passes are also available and can be purchased at the Harry S. Truman Visitor Center, Project Office, or at any attendant

booth located at campground entrances. For more information, contact 660-438-7317.

The daily fee for using the Corps managed boat ramps is \$5, and an annual pass is \$40. Exclude any Missouri resident 65 years of age or older or any person (resident or not) 15 years of age or younger.

Those required to

carry a fishing license agree to observe all of the rules of the Wildlife Code of Missouri and are not allowed to lend the license to someone else for use. They will allow inspections of their permit, picture ID or catch and equipment by an agent of the Conservation Department and will need to carry their license (permit) at all times while fishing.

## Pre-Departure Checklist

*You can help assure a good time while operating your vessel by performing this pre-departure check.*

- Check the weather forecast for the area and time frame during which you will be boating.
- Make sure that the steering and throttle controls operate properly and all lights are working properly.
- Check for any fuel leaks from the tank, fuel lines, and carburetor.
- Check the engine compartment for oil leaks.
- Check hose connections for leaks or cracks, and make sure hose clamps are tight.
- Drain all water from the engine compartment, and be sure the bilge plug is replaced and secure.
- Check to be sure you have a fully charged engine battery and fire extinguishers.
- If so equipped, make sure the ignition safety switch and wrist lanyard are in good order.
- Make sure you have the required number of personal flotation devices (PFD's), and check that they are in good condition and the proper sizes.
- Leave a float plan with a reliable friend or relative.



## CELEBRATING THE HOME OF THE FREE

During this season of celebration and remembrance, my agency is proud to help protect your American Dream.



Whitney Day, Customer Service Representative  
for Jeanette Limback, Agent



Jeanette Limback, Agent  
1894 E Main St  
Warsaw, MO 65355  
(660) 438-7714  
jlimback@amfam.com



Ricky Limback, Sales Specialist - Commercial Lines  
for Jeanette Limback, Agent



American Family Mutual Insurance Company, S.I. & Its Operating Companies, American Family Insurance Company, 6000 American Parkway, Madison, WI 53783 008897 - Rev. 1/19 ©2016 - 19179501





# OZARK Salon

Lake Hair Do Care

660-438-2771

1896 East Main Street • Warsaw, Missouri  
Men, Women, Children • Full Service Salon

**HOURS**  
TUESDAY - FRIDAY  
10:00 AM - 5:00 PM  
SATURDAY  
10:00 AM - 2:00 PM  
MONDAY: BY APPOINTMENT ONLY  
Stylists: Melanie & Dawn

Find us on:  facebook. @ozarksalon



Suzie Brodersen CLU RICP, Agent  
1605 Sunchase Dr  
Warsaw, MO 65355  
Bus: 660-438-7472  
warsawmoinsurance.com

## Plan your next dream

Whatever you're saving for next, it's easier to get there with the right plan. I can help you look at your financial goals and find smart ways to save. Call me today.

Like a good neighbor,  
State Farm is there.®

State Farm  
Bloomington, IL  
2001627

 **State Farm**®

## BACK IN ACTION

Chiropractic LLC  
Sports Rehab & Acupuncture  
KEEPING YOU IN THE GAME OF LIFE

Manual And Activator Style Adjustments  
Certified Chiropractic Sports Physician

Ancillary therapies include  
Kinesiology Taping • Rehab exercises  
Functional Movement screens  
Soft Tissue Release therapy



Dr. TJ Reichert

**(660)-620-0276**  
1650 COMMERCIAL ST, SUITE B  
WARSAW, MO 65355

[www.backnactionchiropractic.com](http://www.backnactionchiropractic.com)

# Heavenly Pets

## at the Lake



Professional  
Dog Grooming

LIKE US ON  
 facebook.

**660-547-0033**

[www.heavenlypetslincoln.com](http://www.heavenlypetslincoln.com)

# Farmers Mutual Protective Assn.

## Insuring Farms - Homes - Lake Property

(660) 547-2323

E-mail: [cathy@farmersmutuallincoln.com](mailto:cathy@farmersmutuallincoln.com)

Website: - [farmersmutualprotective.com](http://farmersmutualprotective.com)

New Agents:

Amy Manning

Caden Smallwood

445 N. Hwy 65 - P.O. Box 11

Lincoln, MO 65338

Business Hours:

Monday to Friday

9AM to 4PM





# Bank Like Anything's Possible

Make the impossible, possible.  
[equitybank.com/possible](http://equitybank.com/possible)

100 E Main St. Warsaw, MO 65355  
660-438-4388



EQUITY  
BANK





## Area Marinas

### Long Shoal Marina & Restaurant

Marina & Restaurant • 660-438-2841  
Service Center • 660-438-3030  
Campground • 660-438-2342

Long Shoal Marina and Restaurant is located on Truman Lake just off of 7 Highway, approximately seven miles west of Warsaw at 12878 Steamboat Road. Long Shoal is a full-service marina with overnight and seasonal slips available, campground close by, indoor fish cleaning station, boat ramp, boating supplies, groceries, soda, beer, cocktails, bait, tackle, gas, new line of clothing

apparel, pavilion for tournaments, service center, and a full service floating restaurant feature a new, mouth-watering menu and an outside patio for scenic dining.

The restaurant hours are: Monday & Tuesday closed; Wednesday & Thursday 7am to 3pm; Friday & Saturday 7am to 8pm and Sunday 7am to 5pm.

### Beyond Marine at Sterett Creek and The Drunken Minnow Bar & Grill

Marina and Campground • 660-438-2280

Motel • 660-438-2821

Sterett Creek Marina is located on Truman Lake just three miles north of

Warsaw on US Highway 65 at 18321 Marina Road. Sterett Creek Marina offers its guests a campground, motel, picnic area, boat ramp, fish cleaning station, freezer storage space, over-night rental slips, gas, boating supplies, bait, tackle, pavilion, and a convenience store. The Drunken Minnow Bar & Grill is open on Friday and Saturday, offering food and beverage on the docks. Sterett Creek Marina is open seven days a week during season Monday through Thursday from 6:30 AM to 6 PM, Friday and Saturday from 6:30 AM until at least 8 PM and on Sunday until 6 PM.

**White Branch Marina**  
Marina • 660-438-6344

White Branch Marina is the only Warsaw marina located on the Lake of the Ozarks at 31092 Stonecrest Rd. They offer gas, two water front decks, bait, tackle, snacks, drinks, boating supplies, boat ramp, overnight rental slips, beer, and apparel.

White Branch Marina and Restaurant is open from 2 PM to 8 PM weekdays (closed on Tuesdays) and from 2 PM to 9 PM on Mondays, Fridays and Saturdays.

### Osage Bluff Marina and Restaurant

Marina and Restaurant • 660-438-2939  
Lodge • 660-438-2891

Osage Bluff Marina is located on Truman Lake just down 83 Highway in Warsaw at 17450 Osage

Bluff Road. They offer a floating restaurant, boat ramp, gas, boating supplies, bait, tackle, beer, snacks, drinks, picnic area, campground nearby, and the Osage Bluff Lodge. They offer overnight slips and have their own service center.

The restaurant is open seven days a week during season for breakfast and lunch from 6 AM until 2 PM. The store and marina hours are during season from 6 AM to 7 PM daily.

### Harry S. Truman State Park Marina

Marina and Store • 660-438-2423  
Park Office • 660-438-7711

State Park Marina is located on Truman Lake in Harry S. Truman State Park, just down UU

Highway, approximately six miles from Warsaw at 28761 State Park Road. They offer gas, boating supplies, bait, tackle, boat ramp, snacks, beer, drinks, apparel, fish cleaning station, overnight slip rentals, pontoon and fishing boat rentals, campground nearby and picnic areas. The Harry S. Truman State Park Marina follows the operating hours of the state park, from sun up until sun down, seven days a week.



## FAST FRIENDLY SERVICE WITH THE BEST PRICES!

*Beth's*  
**OSAGE MINI-MART**  
915 E. Main St.  
Warsaw, MO  
660-438-9575



**YOUR  
#1  
CRAPPIE  
HEADQUARTERS**

**GAS • BEER • BAIT • TACKLE  
SPIRITS • GROCERIES**

- 7 AM - 11 PM / 7 Days a Week
- Tournament Information & Entry Forms
- 5% Sunday Beer & Liquor

*All major credit cards accepted*

**Wildlife Permits • All Live Bait • Block Ice • Lottery**

r | c  
S T Y L E S  
S A L O N

**Contact**  
660.233.1647

 **rlc styles salon**

 **rc.styles.salon**



PHONE  
660-668-4646

TOLL-FREE  
1-877-323-2208



525 W. Main • Cole Camp, MO 65325

Mike Snell, R.Ph.

Tammy Snell

Paula's Dog Grooming  
By Appointment Only



Paula Wampler

(660) 223-6448  
942 E. Main St  
Warsaw MO, 65355



Maggie McMillin Owner/Stylist  
Shianne Hillyer Stylist

324 Seminary • Warsaw Mo.  
• Full Service Salon • Walk Ins  
660-438-6232

Closed  
Saturday-Sunday-Monday  
8am to 5pm



At The Lake Quilt Shop

Great Price Fabric, Notions, Fat Quarters  
& Make Your Own Jellyrolls!

Lori VanNatta / [atthelakequiltshop@gmail.com](mailto:atthelakequiltshop@gmail.com)  
Hours: Tues-Fri 9AM-5PM Sat. 9AM-2PM  
31958 83 HWY, South Warsaw, MO 65355  
660-223-2175

**Fajen**

Insurance Agency, LLC

**Rick Fajen, Agent**

HOME • AUTO • LIFE  
FARM • LIABILITY • HEALTH  
BUSINESS • WORKMANS COMP

601 Commercial Street,  
Suite #1  
Warsaw, MO 65355

**660-438-3800**  
[rfajen@fajenins.com](mailto:rfajen@fajenins.com)



**DISCOUNT  
SMOKE SHOP**

**Grand Opening Sale!! 50% off thru June!**

**1507 Commercial St. Ste 110a Warsaw, MO**



# River's End

## Motel & RV Park



• NEW OWNERS • REMODELED ROOMS • UPDATED AMENITIES • HOT BREAKFAST



(660) 438-2878

31635 MO. 83 Warsaw, MO

[riversendmotel.com](http://riversendmotel.com)



# KOVAC'S FIREWORKS®

**CELEBRATING 35 YEARS!**

**14,000 SQ FT!**

WE RESERVE THE RIGHT TO LIMIT QUANTITIES.



**NO GAMES!  
NO GIMMICKS!  
JUST LOW, LOW PRICES!**



**ST. JOSEPH**  
7701 SE King Hill Rd  
(816) 646-1172

OVER **1000** ITEMS

**LAURIE**  
144 Sherman Ridge Dr  
(816) 646-1172

**WARSAW**  
31487 Hwy 83  
(816) 646-1172



**\$24.99**

REG. \$39.99

Limit 1 per person, per order, per visit. While supplies last. Expires 7/10/23.

**\$9.99** EACH

Limit 2 per person, per order, per visit. While supplies last. Expires 7/10/23. REG. \$13.99



**\$29.99** EACH

REG. \$59.99

Limit 1 per person, per order, per visit. While supplies last. Expires 7/10/23.



**\$15.99**

REG. \$21.99

Limit 1 per person, per order, per visit. While supplies last. Expires 7/10/23.



**KID'S BACKPACKS**

**\$14.99** Reg. \$22.99

Limit 4 per person, per order, per visit. While supplies last. Expires 7/10/23.



**RAGING BULL**  
**\$54.99** EACH  
**5" ARTILLERY**  
REG. \$104.99

Limit 2 per person, per season. While supplies last. Expires 7/10/23.

**NO DEALERS, PLEASE**  
We have the right to limit quantities on any order.

**WE WILL MATCH ANY VALID ADVERTISED RETAIL PRICE!**  
In stock items only. Absolutely no substitutions. Does not apply to percentage off coupons or offers. All prices valid through July 10, 2023.



VISIT US AT [WWW.KOVACFIREWORKS.COM](http://WWW.KOVACFIREWORKS.COM)



**CRACKLING  
BALLS**

**2/\$1**

REG. 69¢

WHILE SUPPLIES LAST.



**GROUND  
BLOOMS**

**2/\$1**

REG. 59¢

WHILE SUPPLIES LAST.

**SNAPPERS**

**4/\$1**

REG. 39¢



WHILE SUPPLIES LAST.



**BLACK BOX  
ARTILLERY**

**\$8.99**

REG. \$12.99

WHILE SUPPLIES LAST.



**200  
GRAMS**

**MAD  
HATTER**

**\$2.99**

REG. \$3.49

WHILE SUPPLIES LAST.

**NO. 500 MONSTROUS  
SHELL & DOMINATOR 3"**



**\$8.99**  
EACH

REG. \$14.99

WHILE SUPPLIES LAST.



**THUNDERBLITZ  
CANDLE**

100 SHOTS

**\$14.99**

REG. \$24.99

WHILE SUPPLIES LAST.



**SNOW CONE  
FOUNTAIN**

**\$14.99**

REG. \$21.99

LIMIT 3 PER PERSON, PER  
ORDER, PER VISIT.  
WHILE SUPPLIES LAST.

**RESOLUTE  
500 GRAMS**

**\$39.99**

REG. \$47.99



WHILE SUPPLIES LAST.

**HYPERSPACE  
500 GRAMS**

**\$39.99**

REG. \$46.99



WHILE SUPPLIES LAST.

**DON'T TREAD ON ME**

**\$44.99**

REG. \$59.99



**500  
GRAMS**

WHILE SUPPLIES LAST.

**COLOR SMOKE BALLS**

**99¢**

REG. \$1.39



WHILE SUPPLIES LAST.





(660) 438-6005



Warsaw, Truman Lake and Western Lake of the Ozark areas. The Campground is semi-wooded, shady, rolling with level sites; lakeside available. From Junction of US 65 & Hwy 7 (North of town), South 1/2 mile on US 65 to Warsaw exit (East Main), West 1/3 mile to cemetery, South 1/10 mile.

807 Gasoline Alley • Warsaw, MO

74 Sites, 60 Full Hookups, 14 Water & Electric, 8 Primitive, 11 Pull-Thrus, 1 Bathhouse with handicap facilities, 20/30/50 Amp Sites

By Lake of the Ozarks & Truman Lake!  
YOUR GET-A-WAY STARTS HERE



*“For A Home That Fits,  
Choose Pitts”*

29101 Old Hwy. 65,  
Dam Access Road, Warsaw, Mo

**660-438-2505**

[www.pittshomesinc.com](http://www.pittshomesinc.com)

Lora Anstine Owner/Broker

**ANSTINE**



**REALTY & AUCTION**, LLC



**660-438-7000**

1649 Commercial St., #4  
Warsaw, MO 65355

(1½ Blocks North of 7 HWY/Commercial St. Light)



Danielle Baker  
Broker/Sales

(816-) 918-3657



Debra Anderson  
Sales Associate

(660) 233-3673



Cathy Wilson  
Sales Associate

(816) 898-7645



Holly Hatzenbuehler  
Sales Associate

(660) 723-2291



Tonya Nathan  
Sales Associate

(660) 281-9361



## Lake Area Rich in History

Truman Lake is home to numerous historical attractions. Some of these attractions include The Benton County Museum, Harry S. Truman Dam and Visitor Center, Joe Dice Swinging Bridge, Steamboat Landing and Drake Harbor, Historic Main Street District and the story of the Butterfield Stagecoach Route.

### THE BENTON COUNTY MUSEUM

The Benton County Museum is operated by the kind people with the Benton County Historical Society. The museum can be found at 1660 Hilltop Drive, just up the hill from Sonic Drive-In of Warsaw. Visitors will be offered a unique and exciting glimpse into the past

and given a view as to how Warsaw and Benton County came to be. Admission prices at the Benton County Museum are \$3 for adults and \$2 for seniors and children between the ages of 3 and 12. Hours of operation are Friday & Saturday 10am to 4pm and Sunday 1pm to 4pm (April through October.)

### JOE DICE SWINGING BRIDGE

The Joe Dice Swinging Bridge in Warsaw is a one of a kind and a must-see attraction. Built by Joseph A. Dice, the bridge is over 100 years old and is the only one still standing in the area. In 1999, it was listed on the National Historic Register. The bridge is located parallel

to 7 High-way, and connects the Warsaw's trail system across the Osage Riverwalk, and Warsaw invites you to come and take a stroll around the harbor area. Drake Harbor can accommodate boats from Lake of the Ozarks and gives access from the water to the historic downtown area. A playground, boat ramp, fishing docks, and public rest rooms are also found on the grounds, along with a beautifully constructed amphitheater.

### THE BUTTERFIELD OVERLAND STAGECOACH & MAIL ROUTE

A route that connects Benton County through scenic, backcountry gravel roads, following in the

wagon tracks of history. For bike packing, day tripping, overnight stays and pure adventure, you will fall in love with this section of the Butterfield Stage Experience. Linking to the Rock Island and Katy Trail in Windsor, the Butterfield Stage Experience Bike packing Route utilizes an existing historical trial to promote

the attributes of an entire rural county, enticing adventure seekers to explore the hidden gems of the area. Each community on the route has its own unique history, with old stone markers showing the way. Cole Camp was motivated to change the name of their city park to the Butterfield Park, and it has become

an important way station for adventurers. Lincoln, known as the town alive on 65, is the hub to the Katy Trail and Rock Island connections. Warsaw is a key component, with a Butterfield Stone marker in their courthouse lawn, and the old stagecoach stop across the street. Get out on the Butterfield and rediscover the pioneer spirit.



**THE BENTON COUNTY MUSEUM** is home to a great collection of the fascinating history of the area.

*Mosley Law*

(660) 530-0103

JEREMIAHMOSLEY.COM



**Your Community. Your Bank. Your Relationship.**



Member  
FDIC

[www.mybankcnb.com](http://www.mybankcnb.com)

Missing that human touch with your bank? Come talk to a real person at Community National Bank & Trust. A bank should be a trusted financial partner and at Community National Bank & Trust, we're proud to be that for our customers. We're your local bank that's small enough to know you, yet big enough to offer the best products. Whether you are opening your first account with us, exploring mortgage loan options, or applying for a credit card, we make it easy. Stop by one of our banking centers today!

**101 S Highway 65 Lincoln**

**660-547-3311**

**1695 Hilltop Dr Warsaw**

**660-438-9554**





**MY BOAT  
ALLOWS ME TO GIVE MY DOG THE LIFE HE DESERVES**



## SUMMER ON THE WATER

**IS NOT JUST ABOUT ME. MY DOG, CHARLIE SPENDS HIS DAYS ALONG MY SIDE WATCHING FOR FISH AND SOAKING UP THE SUN. THE CREW AT ANGLER'S PORT MARINE HELPED MAKE THIS HAPPEN.**

--Mark & Mary Beth Vater, Angler's Port Marine Customers

May 2021 Winner  
#anglersportphotochallenge



Your Time on the Water is Valuable  
Visit [anglersportmarine.com](http://anglersportmarine.com) for best selection  
and learn about the Angler's Port Guarantee



# DRAKE HARBOR TRADING CO.

221 West Main Street Warsaw, Missouri  
816-213-6626



WINE TASTINGS • BEER  
CANNED GOODS & SNACKS  
CLOTHING • HOME DECOR  
BACK PATIO • FUN ATMOSPHERE



OPEN  
FRIDAY - SATURDAY  
12PM - 8PM

CLOSED  
SUNDAY - THURSDAY



## Just Teasin' Salon

### Call Crystal, Tammy or Tara

Open Tuesday - Friday  
8AM to 5 PM

Saturday by appointment only  
Evenings by Appointment Only

235 W. Washington St.

660-438-3600

# MIKE'S AUTO REPAIR

Quality  
Service

at  
Reasonable Rates

Monday - Friday  
8 AM to 5 PM

309 W. Washington St.  
Warsaw, MO  
(660) 438-4484

# TWIN LAKES

## Accounting & Tax Service

936 E Main St., Ste D  
Warsaw, MO 65355  
(660) 438-1090



@ Twin lakes accounting and tax service

Steve Cannon Agency, LLC



## Steve Cannon

1622 Commercial St  
Warsaw, MO 65355-0336  
SCannon@ShelterInsurance.com  
ShelterInsurance.com/SteveCannon  
P 660-438-5108

We're your Shield. We're your Shelter



# ReeceNichols

## GOLDEN KEY REALTY

An Independently Owned and Operated Member of the Reece & Nichols Alliance, Inc.

800-760-2255 • 660-438-7228

Visit [www.linkatthelake.com](http://www.linkatthelake.com) For More!



Located on Highway 65 just North of Warsaw

Email: [goldenkey@recenichols.com](mailto:goldenkey@recenichols.com)





# WE'RE HERE



## WHEN YOU NEED US

## WALK-IN HOURS

10 am–noon and 2–4 pm  
Monday through Friday

**At Bothwell Health Center – Truman Lake, we know how important care and convenience are to you.**

Whether you and your family are visiting the lake this summer or you live here, choose Bothwell's Warsaw clinic when you need both.

We're the only medical practice in the area with primary and specialty clinicians, as well as on-site X-rays, 3-D mammograms, bone density screenings and lab services so you can get the care you need when you need it.

### LOCATION AND HOURS

1765 Commercial St., Warsaw  
7 am–6 pm Monday through Friday



**I've always been able to count on Bothwell. There's no place I'd rather go. 77**



SARAH HASEK, MD



CHELSEA CASTEEL, FNP



JAIME REED, PA-C



KAREN WALTERS, FNP-BC

## TO MAKE AN APPOINTMENT, CALL 660.438.6800



**Bothwell**<sup>™</sup>  
Health Center – Truman Lake

GET WELL. STAY WELL. BOTHWELL.

brhc.org



## Outdoor Attractions

Cycling, hiking fishing hunting, and of course lake life fun! The Truman Lake area offers countless sporting attractions that are great for the whole family. These attractions include: The Walking/ Biking Trails of Drake Harbor, Shawnee Bend Golf Course, Truman Lake Mountain Bike Park and Hiking Area, Harry S. Truman State Park, a Disc Golf area, and a Skate Park.

### WALKING AND BIKING TRAILS AT DRAKE HARBOR

The Drake harbor area is home to numerous walking trails that show off some of Warsaw's most beautiful countryside. These trails allow for users to get a glimpse of some of the unique wildlife roaming the area, all while catering to enthusiasts of nature, walking, and biking alike. The current trails include the Bledsoe Ferry Trail, Kickapoo Island

Trail, Steamboat Landing Trail, Osage Trail, and Eastgate Trail. The trails are accessible at various points across Warsaw and more information regarding them can be obtained through calling 660-438-5522.

### SHAWNEE BEND GOLF COURSE

The Shawnee Bend Golf Course offers a beautiful nine-hole, par 36 course to challenge even the avid golfer. Located two miles northwest of the center of Warsaw, the Shawnee Bend Golf Course offers a driving range, clubhouse, snack bar, golf shop, putting green, and indescribably gorgeous views of Truman Lake and the area surrounding it. You may even be able to catch a glimpse of the local wildlife along the way. The hours of operation are from 7:00 AM to dusk from Monday

to Sunday (except during league play.) Contact the course at 660-438-6115 for more information or visit the website at [www.shawnee-bendgolf.com](http://www.shawnee-bendgolf.com).

### TRUMAN LAKE MOUNTAIN BIKE PARK AND HIKING AREA

The Truman Lake Mountain Bike Park and Hiking Area is located three miles from downtown Warsaw on Benton House Avenue, just off the Truman Dam Access Road. The park offers several different biking and hiking trails for all different levels of riders and hikers. Come out and enjoy the beautiful scenery while treating yourself to a hiking trip or bike ride like no other. Contact the City of Warsaw at 660-438-5522 for more information.

### BERRY BEND EQUESTRIAN PARK

Berry Bend Equestrian Park is located at the Berry Bend Campground area down Z Highway and off

of 7 Highway. The park is limited to equestrian users only. Amenities include corrals, overhead tie posts (next to some campsites), all season water hydrants, and several miles worth of trails. Call 660-438-7317 for any more info.

### HARRY S. TRUMAN STATE PARK

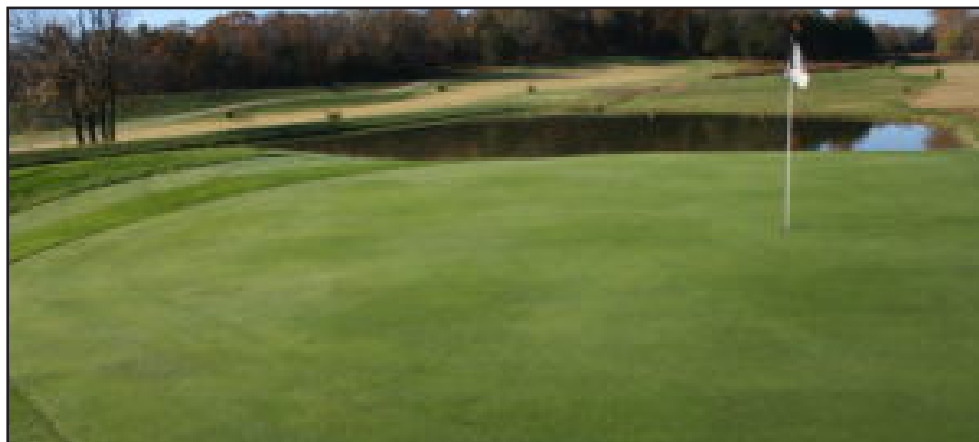
The Harry S. Truman State Park is can be found on UU Hwy about seven miles from Warsaw, off

of Hwy 7. Sitting on a peninsula, Truman State Park offers many activities for all to enjoy. Hiking, fishing, boating, camping, swimming, picnic areas, playgrounds, a marina, beaches, and abundant wildlife are what you can expect at the Harry S. Truman State Park. Hours are from sunrise to sunset and admission is free, although daily fees are required for use of the

beaches. Contact the park office at 660-438-7711.

### M.K. WHITE PARK

M.K. White Park connects to the Drake Harbor area off of Main Street in Warsaw, behind the Corner Gardens. At M.K. White Park, you will find a challenging and fun disc golf course. Lake of the Ozarks backs up to M.K. White Park and offers bank fishing opportunities and wildlife viewing.





**JASON'S  
AUTOMOTIVE**

Jason Judd Owner  
Monday-Friday ~ 8:00 AM to 5 PM

**We Are The  
"CAN DO"  
Professionals**

805 Wood Street  
P.O. Box 634  
Warsaw, MO 65355

**660 438-2002**





**PLUMBco.**  
**PLUMBING & ELECTRIC**

PROFESSIONAL COMMERCIAL PLUMBING & ELECTRICAL INSTALLATION

**(660) 476-0463**





# ROLLING PERFECTION

**RESIDENTIAL AND COMMERCIAL  
INTERIOR/EXTERIOR PAINTING  
ROOFING, SIDING  
AND  
"SO MUCH MORE"**

**LICENSED & INSURED**

**417-288-9435 / 660-924-6069**

**OWNERS: MIKE & SHAWNA BARKER**



AUTO • HOME • LIFE

It's your  
getaway

Whether you're enjoying the roar of an engine on a tight turn or dropping a line in your favorite fishing hole...it's your getaway.

Shelter's boat insurance lets you relax and enjoy the ride. Ask your agent about our competitive rates and coverage options. Let us quote your boat - or personal watercraft.

It's your getaway, and it's important to you. Let us help you Shelter it.



**LeeAnn Beaman**

Agent

190 S. HWY. 65

Lincoln, MO. 65338-0225

(660) 547-0099

We're your Shield. We're your Shelter.  
ShelterInsurance.com



413 E MAIN  
WARSAW MO  
660-438-2186

**BIKES, KAYAKS  
& PADDLEBOARDS**



Rentals  
Tours  
Sales



**SNACKS, GEAR,  
MERCH, & MORE**

Prices and Reservations online at  
WarsawAdventures.com

**R&C  
Adventures**

**LOG CABIN RENTALS BY  
TRUMAN LAKE**



Open All Year!  
Free WiFi!  
Playground!  
Horsehoeipit!

**The Number One Comfort Stop For The Whole Family  
To Come Relax, Fish, Hunt, & Enjoy The Outdoors!**

**660-438-5933**

**CONVENIENTLY LOCATED NEAR TRUMAN LAKE,  
ONLY ONE MILE NORTH OF LONG SHOAL MARINA!**

**12049 Hwy 7, Warsaw MO**

RCAdventureCabins.com

RandCAventures65355@gmail.com

Like us on  
facebook







**FOOD, DRINKS & FUN**

**(660) 438-RBAR**

**STEAK ★ BURGERS**

**SEAFOOD ★ PASTA**

**Home of the famous  
Bacon Bloody Mary  
Local Beers on Tap**

**31390 WARSAW AVENUE: 65 HWY - TAKE THE WHITE BRANCH EXIT**



# Safe Boating is Happy Boating

Watercraft safety is paramount at all times and becomes even more important during the busy summer months. Missouri law has restrictions in place to assure everyone's safety and officers on the water to ensure it is obeyed. Any person operating a motorboat or personal watercraft must be at least 14 years of age unless under the direct, onboard supervision of a parent, guardian, or person 16 years of age or older.

Anyone born after January 1st, 1984, is required to take a boater education course, available online, and receive approval from the Missouri State Highway Patrol. Upon approval, a card will be issued that must be carried with the individual at all times while operating

watercraft. Anyone requiring the card but not carrying it will be fined. Even those not required to take the course can benefit from it. Not only will they become a more educated boater, they may be able to save on boat and PWC insurance. There is no age restriction on taking the course. To take the course, visit [www.boat-ed.com/Missouri](http://www.boat-ed.com/Missouri).

Motorboats and motorized personal watercraft must be titled and permitted to operate on Truman Reservoir and Lake of the Ozarks: see the Missouri Department of Revenue website for details. In order to be titled and permitted, the craft must undergo a safety inspection which includes, but is not limited to, the availability of personal flotation devices and

operational navigation lights. Full details can be found in the handbook, available at [www.boat-ed.com/Missouri](http://www.boat-ed.com/Missouri). Upon satisfactory completion of the safety inspection, a decal will be awarded and affixed by a Highway Patrol trooper behind the registration number of the watercraft.

Some basic rules and courtesies apply to all who wish to enjoy the water, please obey and help keep everyone safe!

### Know your vessel!

The maximum safe weight and number of occupants can be found on the capacity information plate, usually located near the operator's position or on the transom. If the vessel does not have a plate affixed, refer to the owner's manual.

### Encountering other vessels:

Although no craft has the legal right-of-way such as is law on highways and streets, there are courtesies that every boater should know and honor. It is the responsibility of both operators to avoid collision!

When two craft meet on the water, one is referred to as the "stand-on" vessel and the other is the "give-way" vessel.

If both craft are motorized and meeting head-on, both should give way and pass to the right, or starboard. If two motor craft are crossing, the vessel on the operator's left (port) should give way, while a vessel to the operator's right has the right to stand on. When one craft comes from behind to overtake another, the vessel in front is the stand-on, while the one doing the overtaking needs to give way.

In the case of motorized craft meeting non-motorized craft, or sail boats, the powered craft is always the give-way vessel, except in the rare case of a sail boat overtaking a motorboat: the vessel coming from behind is always the give-way vessel!

The lakes are also popular for kayaks and canoes, so be aware of all the little guys trying to safely enjoy the water too! If your vessel is bigger and faster, you should always give way to the smaller, man-powered craft.

AND ALWAYS REMEMBER, OPERATING ANY WATERCRAFT WHILE UNDER THE INFLUENCE OF ALCOHOL, DRUGS,

OR CONTROLLED SUBSTANCES IS ILLEGAL AND UNSAFE.

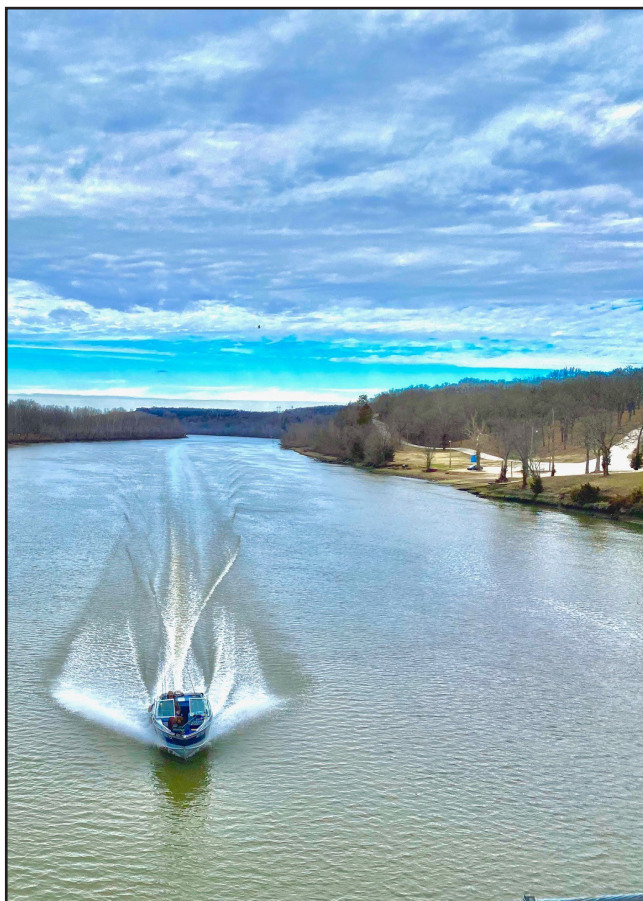
Missouri has zero tolerance for anyone behind the wheel while intoxicated, which means a blood alcohol content of 0.08 or above. Alcohol and watercraft do no mix! This includes wakeboards, water skis, inflatable tube, kayaks, canoes, or other such devices. Operating any watercraft or other such device on the water immediately confers your consent to be tested and refusal to do so can result in arrest. If testing results are positive, you can be arrested, fined, and lose your license.

Be safe, be smart, and HAVE FUN!



# WEAR IT

A program of the National Safe Boating Council



For Professional Service and Hometown Charm

## BORING REXALL DRUG

NEW  
PRODUCT  
ARRIVALS!

**ATTENTION!**



Now carrying  
Elderberry Concentrate!

Accepting Most Medicare  
And Third Party Insurance  
Plans. Take Time To Check  
Prices When Choosing A  
Pharmacy, BIG Does Not  
Always Mean Better. No  
Need To Wait For Hours To  
Get A Prescription Filled,  
Stop By Today For Fast,  
Friendly Service!

161 W. Main St.  
PO BOX 278  
Warsaw, MO 65355



Tel: 660-438-5162  
Fax: 660-438-5083

Save Money At Your Hometown Pharmacy

Pharmacist Dana Koll, RPh

Store Hours: Monday thru Friday 8 AM to 5:30 PM

660-438-7462  
Warsaw, Missouri  
28985 Commercial Ave.

and Operated for 30 Years!

Proudly Family Owned

Free Estimates





**FOR ALL YOUR  
LAND, FARM & HOME  
SELLING & BUYING NEEDS**

MISSOURI  
**LAND**  
COMPANY



## Harry S. Truman Dam & Visitor Center

Managed by the U.S. Army Corps of Engineers, The Harry S. Truman Dam and Visitor Center offer nature enthusiasts and history buffs alike the experience of a lifetime. The dam and reservoir were built with the purpose of flood control, hydroelectric power production, fish and wildlife management, and recreational use. Truman Reservoir is, in fact, the largest flood control reservoir in the state of Missouri.

The visitor center displays dinosaur bones found around the area when the dam, reservoir, and center were under construction. Inside the center, you will find an observation deck overlooking one of Missouri's most popular recreation lakes, Truman Lake. AN observation deck is located outside of the cen-

ter, around the base, and offers a tremendous view from outdoors. The center is open Friday, Saturday & Sunday from 9 AM to 4 PM from Memorial Day weekend through Halloween. Admission is free and more information on daily events held can be found by calling 660-438-2216.

Take a hike on one of the numerous trails surrounding the grounds to get a glimpse of some of the area's wildlife while enjoying the magnificent views of the lake. Don't forget to explore the 1800's buildings found on the center's grounds, including the historical Hooper House, Concord Schoolhouse, an 1850's replica of a pioneer homestead, and the Kaysinger General Store, where you can purchase goods from the era.



THE VISITOR CENTER on Kaysinger Bluff provides a bird's eye view of the dam and lake area.

## G&W Neighborhood COUNTRY MART

BETTER QUALITY...  
BETTER VALUES...

1000 E. Main St., Warsaw MO  
660-438-5179

OPEN 7 DAYS A WEEK! 7 AM TO 9 PM

HAND CUT CHOICE ANGUS BEEF  
Springer Mountain Farms Fresh Chicken  
Delicious, Wide Variety of Fresh Produce  
Full Deli with Daily Lunch & Dinner Specials



The Area's Largest Selection of  
Craft and Imported Beers  
AND Your Place to Go For  
Fishing and Tackle Supplies!

Check For Our Pink Tags on Thousands of Reduced Items Each Week!

We Want To Help You Save On Your Food Budget

CHECK OUT OUR WEEKLY  
FACEBOOK ONLY SPECIALS

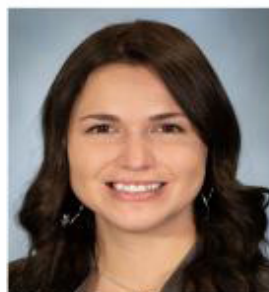


# T & K

Automotive LLC  
Sales & Service  
**660-438-3509**

**Domestic  
& Imports**  
New & Used Tires  
Batteries  
Oil Change  
Tune-Up  
Brakes

**421 E. Main Street, Warsaw MO**



Julie Brewster - Agent  
(660) 438-9037  
Julie.Brewster@mofb.com

**MISSOURI  
FARM BUREAU  
INSURANCE**

We've got Missouri covered.

AUTO HOME LIFE BUSINESS





# STERLING AVENUE AUTO SERVICE

TIRES • BRAKES • DIAGNOSTICS  
COMPLETE AUTO REPAIR

1841 East Main Street  
Warsaw Missouri

**(660) 438-4599**

Monday - Friday: 8 AM to 5 PM  
Saturdays: 9 AM to 12 PM

## MOZARK MOCHA

### FINE COFFEE & MORE

431 N Highway 65 • Lincoln, MO 65338

## 660-547-CUPS

BREAKFAST BURRITOS • CROISSANTS  
CINNAMON ROLLS • BISCUITS & GRAVY  
MUFFINS • CAKES • CUPCAKES • HOT  
CHOCOLATE BOMBS • CHICKEN WRAPS  
6:00 AM - 3:30 PM • 7 DAYS A WEEK



[www.MozarkMocha.com](http://www.MozarkMocha.com)



# CITIZENS-FARMERS BANK



## *Banking Convenience!*

### Cole Camp Stover



Member  
FDIC  
EQUAL HOUSING  
LENDER

# [CitizensFarmersBank.com](http://CitizensFarmersBank.com)



## Historic Downtown District

Along with all the outdoor adventure to be found in Warsaw, there are also one-of-a-kind boutiques and antiques located throughout the shopping district. Statuary antiques are your passion, Gardens, Country Charm, check out Warsaw Antique and The Landing Boutique Mall and Middle Bridge offer a unique modern Antiques. These shops and selection of clothing, many more contain hidden jewelry, and décor. If gems waiting to be picked out and enjoyed.



**DRAKE HARBOR AND THE TRUMAN DAM** are just a few of the beautiful landscapes that the Warsaw area has to offer.



**WARSAW'S MAIN STREET** plays host to a wide variety of shops and restaurants, as well as many historic buildings.



*Roasted in House*

*Come see us soon*

**936B E. MAIN STREET  
WARSAW, MO 65355**

---

**DAYTIME DELIGHTS**  
*Breakfast & Lunch items*

**RISE AND SHINE WITH US**

Monday - Saturday  
**6:30AM - 5PM**  
Sunday  
**8AM - 3PM**

**(660) 438-9424**

*Order Beans Online*

**WWW.REDWINGCOFFEEMO.COM**



# MAIN ST FITNESS

212 Seminary  
St Warsaw, MO

660-723-6004

- > Certified personal training options
  - > No sign up fees
- > Full mens and women's bathroom/locker rooms
- > Full weight training center/cardio center



- > \$45/ month standard membership
  - > \$5 Day Pass
- > 24/7 Member Access
- > Membership plan options/discounts

**LAKE HILLS MOTEL**  
**31535 HIGHWAY 83**  
**WARSAW MO 65355**  
**660-223-8098**

**KING ROOMS \$75.00**  
**KING & TWIN \$85.00**  
**WEEKLY \$ 300.00**

*Two Lakes Restaurant*  
*Open daily for Breakfast*  
*and Lunch*

Open 7am to 3pm 31535 Highway 83  
7 days a week  
660-492-4631

Fresh Pork Tenderloin  
Home Made FF

**Get Your Kicks**

312 Benton St.  
Warsaw, MO  
(660) 723-9016

Come In For The  
Fun & Outside  
Activities In The  
Beer Garden!

**At Nix Horseshoe Bar**

**See You There!**



# Back In Time HEADQUARTERS

234 West Main St.

Warsaw, Missouri



Dairy Ice Cream

So Many Flavors!

Banana Splits

Sundaes

Shakes

Malts

Cookies

Pies

MUCH MORE!

PIE, CAKES, OLD FASHION CANDY!

## Fish Limits & Size Requirements

**Crappie** must be at least 9 inches in length, from the tip of the snout to the end of the tail, and no more than 15 can be kept in a day. **Blue catfish** have a slot length restriction, which means they cannot be kept if they fall within the length range. On Truman and its tributaries, this slot is any fish between 26 and 34 inches. Only 10 bluecats can be kept per day, and only 2 of those kept can be over 34". This means you can keep 8-10 blues as long as they are less than 26" long.

**Paddlefish**, on the other hand, must be at least 34 inches long to be kept.

**Bass:** Black, including largemouth and smallmouth, 15" MINIMUM

**Spotted:** 12" MINIMUM

**Crappie:** 9" MINIMUM





# HIDDEN OAKS RANCH

## Cabin Getaways

20918 Doe Trail, Warsaw, MO  
**660-723-6400**



### Cabin Amenities:

Linens & Towels • Kitchens w/everything • Shower/Bathroom • A/C & Heating • BBQ Grills • Picnic Tables • Fire Pits w/free firewood • Short Trails • Fish Cleaning Area • Lighted outdoor lounge area for frying.

Secluded & Private campground just minutes away from Truman Lake & Lake of the Ozarks where adventure awaits you!

**EXPLORE - RELAX - ENJOY**

[www.hiddenoakscabins.com](http://www.hiddenoakscabins.com)

Reservations made by calling H.O.R. or through Airbnb.



# HIDDEN LAKE RESORT

## & Lake Time Grille & Bar

### AMENITIES INCLUDE:

- Full Restaurant • Outdoor Dining
- Social Events
- Streaming • Fish Cleaning Station

**11958 Hidden Lake Drive, Warsaw MO**  
**660-438-5106**

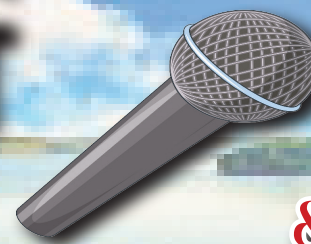
[www.myhiddenlakeresort.com](http://www.myhiddenlakeresort.com)



@HiddenLakeResortMotel

On Site Smoked Meats  
 Daily Specials from \$6.<sup>95</sup>

**KARAOKE**  
**TUESDAYS,**  
**FRIDAYS,**  
**& SATURDAYS**



9 miles west of Warsaw on Hwy 7  
 open Monday – Thursday • 11 am – 10 pm  
 Friday – Saturday • 11am – 1:30am  
 closed Sunday



# Benton Ridge Winery & Campground

25518 Fitzpatrick Ave.

Warsaw, MO 65355

bentonridge01@yahoo.com

660-776-WINE (9463)



## WESTERN LIFESTYLE

Home Decor & Boutique • Lawn & Garden

Ranch Raised Angus Beef

(HORMONE - ANTIBIOTIC FREE)

OPEN FRIDAY-SATURDAY 11:00-5:00

SUNDAY 12:00-4:00

07 NORTH HWY 65 • LINCOLN, MO 65338

## M MAIN STREET MUTUAL INSURANCE

Specializing in Auto, Homeowner, Equipment  
Breakdown, and Commercial Insurance



Bonnie Fitzpatrick



Eric Hoke



Bob White

### Main Street Mutual Insurance

has been providing quality, affordable insurance products to its members for over 140 years.

Our success is measured by our policyholders choosing us because of their belief in our ability to meet or exceed expectations of price, service, and ability. We have a team of agents and staff that are committed to assisting you with all of your home, auto, & commercial insurance needs.

## GET IN TOUCH

(660-668-2445)

206 W. Main Street  
Cole Camp, MO 64325

@MainStreetMutualInsuranceInc  
mainstreetmutual.com

**Hours:**  
Monday-Friday  
9 am-noon, 1-4:30 pm





# World Finance



Personal installment  
loans up to \$10,000



Most loans approved  
in about one hour



Professional Tax  
Preparation

## [www.LoansByWorld.com](http://www.LoansByWorld.com)

\*Most applications can be approved in about 60 minutes. All loans subject to our usual credit underwriting policies.  
World Acceptance Corporation ©2021

**187 West Main Street  
Warsaw, MO 65355  
(660) 428-1293**



# Truman



# Marina

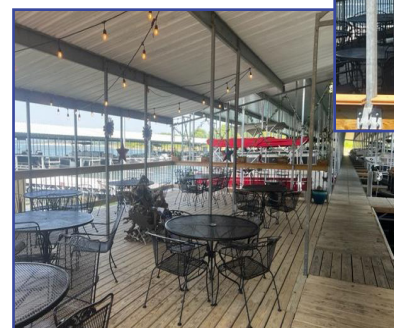
## 660-438-2423

Check out our NEW facebook page!



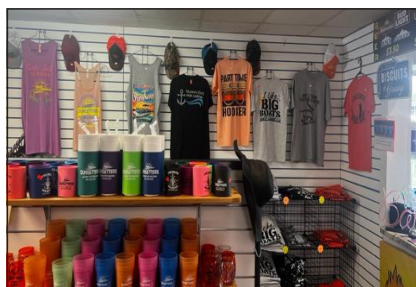
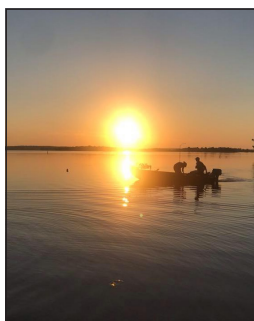
@Truman State Park Marina

**FREE PUBLIC BOAT RAMP**  
**PONTOON & FISHING BOAT RENTALS**  
**FUEL • BAIT • FISHING**  
**FISHING PERMITS**  
**ICE & CONVENIENCE STORE ITEMS**  
**SEASONAL & NIGHTLY SLIP RENTALS**  
**FENCED STORAGE**  
**BEACHES & CAMPING CLOSE BY**  
**& LOTS of FUN for ALL!!!**



***A full service family run marina providing  
all you need to enjoy Truman Lake!***

**Whether you are an avid fisherman looking to spend the day on the lake fishing trophy catfish, or if your idea of a good time is spending a relaxing afternoon on a pontoon with your family, Truman State Park Marina boat rentals has you covered!... Already have a boat? Check out our available nightly and seasonal boat slip rentals, as well as dry storage.**



## 14950 State Park Rd E • Warsaw, MO 65355

*Located 5 miles west of Warsaw. HWY 7 to HWY UU north.  
UU dead ends right into beautiful Truman State Park.*



# SUNSETTERS BAR & GRILL

*Relax & Kick Back  
on our beautiful on-the-water deck!*









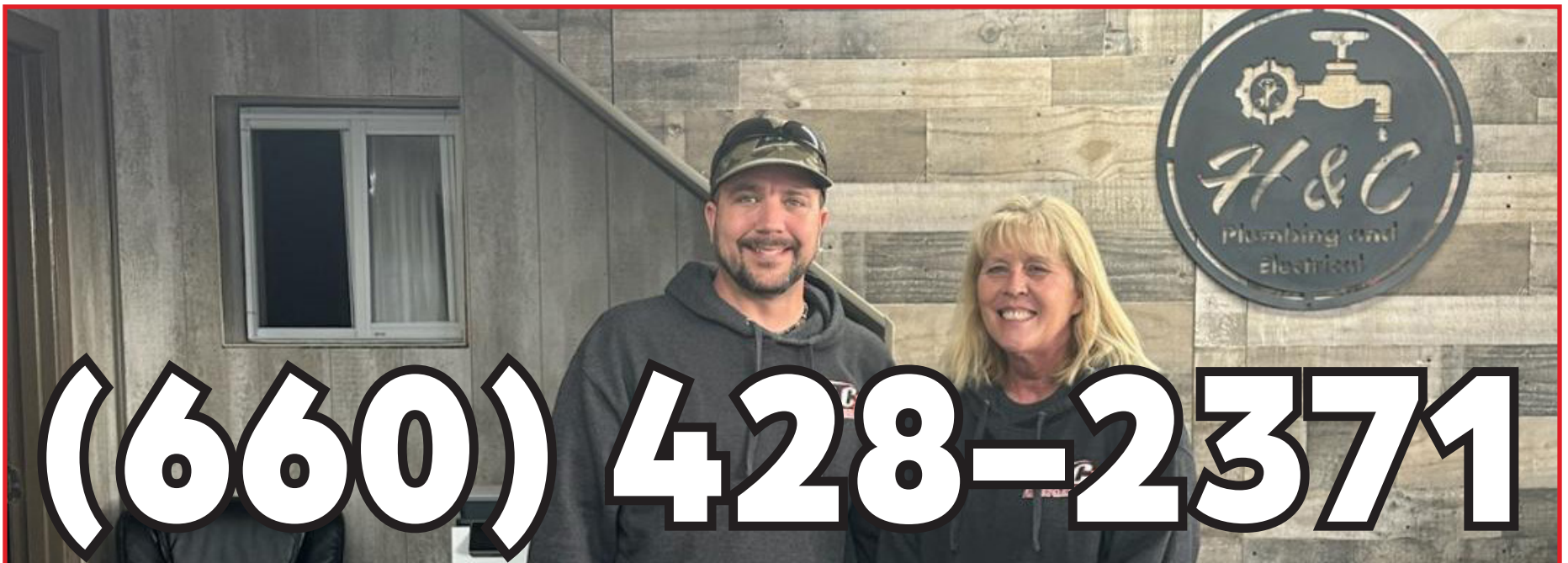
# **H & C**

## **PLUMBING & ELECTRICAL**

**SERVICE CALLS  
COMMERCIAL & RESIDENTIAL  
DRAIN CLEANING**

**[www.warsawplumber.com](http://www.warsawplumber.com)**

**EMAIL: [HandC.Plumbing@yahoo.com](mailto:HandC.Plumbing@yahoo.com)**



**(660) 428-2371**

**HEATH CUNNINGHAM, OWNER**

**924 E MAIN STREET, WARSAW, MO**



# Truman Lake Marine And Powersports, LLC

23963 Hwy 65 Warsaw, MO 65355 • (660)438-6358



**Truman Lake Marine** in Warsaw, Missouri serves boaters who want a quality product at a fair price. We take care of all your boating needs in a fast and friendly manner!

We are a full-service facility offering sales, service, parts, repair, and custom-made boat covers. Truman Lake Marine is a Mercury, Suzuki & Honda warranty facility.

We sell Landau Pontoons and Tritoons powered by Mercury, Suzuki, and Honda. We GIVE you 5 YEARS of Engine WARRANTY with your purchase. Trade-ins are also welcome.

Best finance terms & rates in the area  
& We offer the lowest rates around.

Give the dealership a call at 660-438-6358.

Located at: 23963 US-65 • Warsaw, Missouri 65355

## **Truman Lake Marine**

Better Boats, Better Pricing, Better Service... Higher recommendations.



[www.trumanlakemarine.com](http://www.trumanlakemarine.com) • [trumanlakemarine@gmail.com](mailto:trumanlakemarine@gmail.com)