



Essex Annual Town Meeting Monday, May 6

Essex Elementary School, 12 Story St., starting at 6:45 p.m.

MANCHESTER CRICKET

A Local Tradition Since 1888

VOL. 136, NO. 49

FRIDAY, APRIL 26, 2024

PRICE: \$1.25

BRIEFLY

ME Rotary Kentucky Derby

It's time for the Manchester Essex Rotary Club's 19th Annual Kentucky Derby Party and Auction, 5:30 to 8:30 p.m. Saturday, May 4 at the American Legion in Manchester. Buffet dinner and cash bar. Auction prizes this year include a vacation in Killington, VT, a lobster bake on Misery Island, a day of sailing on Casco Bay, professional sporting events tickets, local artwork, and so much more. The live auction will feature "a celebrity auctioneer." Come enjoy a mint julep, enter to win the hat contest, have great fun, and raise funds for local scholarships, and other local and other national and international causes. Tickets are \$60 if purchased ahead (at manchesteressexrotary.org) and \$70 at the door.

Last Call! Hooper Fund Grant Deadline May 1

Calling all school education and recreation programs, including school and town athletic leagues, youth recreational activities, summer programs and similar initiatives. The deadline for Hooper Fund grant applications is Wednesday, May 1. Applications can be accessed online at hooperfund.org or picked up at the Parks and recreation Dept. at Town Hall. The Hooper Fund is a local community-based charity that provides grant funds to start up programs, but not individuals.

A Month of Music

For the music lovers out there, there are three school seasonal programs that are on the May calendar. First up it's "Acapella night" at the ME Regional Middle High School, 6 p.m. Thursday, May 2 in the auditorium featuring Sound Waves and guest acapella groups. One week later, it's the Middle School Spring Concert starting at 6 p.m. on Thursday, May 9 in the auditorium. Finally, the little ones. The Memorial Elementary School Spring Concert at 6 p.m. Thursday May 16 at the ME High School will feature a rock band, chorus, and concert band. On a separate note, the Cape Ann Symphony will be closing out the current Spring season with a scheduled performance of "The Three Bs" starting at 2 p.m. on Sunday, May 2 at the ME Regional High School Auditorium. Tickets and info at capeansymphony.org.

Crib Addicts Week 3

It was a big night for Cribbage Tuesday at the Legion, and after Week 3 of play with the "Crib Addicts," it was (again) David Slade who was in the lead followed by Ted Cakounes, Michela Hirnak, Billy Bell, Stephen Chabot, Harry Parsons, John Bubrouski, Tina Latassa, Jim Chabot, Heather MacDonald, Clem Courcy, Ben Conway, Bob Turkildsen, Paul Clark, Karen Rieck, Annette Mackin, Mark Wadleigh, Peter Gabriel, and Joan Snow. The group meets every Tuesday at 6 p.m., and all skills are welcome.

Heavy Stuff ... But Important

Something must be in the air because this week happens to feature several articles focused on important local challenges. First, the Gloucester Stage Co. (Page 5) this weekend hosts an inaugural festival of three separate productions focused on climate change. Then, on Page 3 MBTS Town Administrator Greg Federspiel addresses the future of Masconomo Park's resilience in the face of flooding. And on Page 9, Cricket Editor Erika Brown talks housing shortages with Mass. Senate Minority Leader Bruce Tarr.

ATM: New Senior Center, Town Launch, EES Study

By Erika Brown

Voters at Manchester's Annual Town Meeting Wednesday overwhelmingly approved groundwork for two big long-awaited projects: a senior center at the Masonic building behind Town Hall and formal planning for a new Essex Elementary School building.

They also approved significant upgrades to Manchester's water and sewer operations, including the move to home "smart meters" and funding for PFAS mitigation while also approving a town plan to take over a fee-based private harbor boat launch service for mooring holders.

These items were among the 21 warrant articles taken up in just over three hours by 317 voters at Manchester Memorial Elementary School.

All articles were approved—none unanimously but nearly all easily—and these included funding the town's largest annual financial obligations. Manchester's annual FY25 municipal operating budget (\$16.818 million) was approved, as was the town's \$16.339 million share (up 1.84% from last year) of the \$31.1 million FY25 operating budget for the Manchester Essex Regional School District.

Anna Lin Mitchell of the ME Regional School Committee introduced the district's FY25 budget. A fiscal hawk, Mitchell two years ago surprised her own committee by telling Annual Town Meeting (ATM) attendees she didn't support that year's district budget. This year, Mitchell was a booster. She said MERSD is among the highest performing school districts in the Commonwealth, ranked in the top 2.6% of all public high schools in America by US News & World Report. Mitchell said the district's financial performance significantly beats the state's average among local schools and districts. Voters agreed, approving the Manchester's share of the MERSD FY25 budget easily (271 to 18).

Another highlight of the evening occurred during discussions on Article 6 seeking \$1 million to purchase of a 2/3 portion of the Masonic Hall to establish a new Senior Center. Selectman Brian Sollosy said the funding would allow the purchase under a condominium structure, and the estimated \$2.4 million renovation costs would be raised privately. He called the deal a "win-win" for the town, the COA, and the Masons, since the new design would give the town a new space for large public meetings.



More than 300 voters weighed in on a 21-article Warrant Wednesday for Manchester's 2024 Annual Town Meeting. Photos Paul Clark



But in case anyone missed it, Margaret "Peggy" Coleman of Friend Street reminded attendees that the idea of creating Manchester's first senior center has been a wish that goes back decades. Coleman captured voters' hearts by sharing that she was the last living founding member of the Council on Aging, as she nostalgically recounted the group's journey from 1986. Voters passed Article 6 (326 to 28) and offered the night's only moment of applause.

Article 12 stirred animated debate seeking \$660,000 as Manchester's contribution to a \$1.2 million feasibility study on the future of Essex Elementary School (EES). ME School Committee member John Binieris introduced the measure. He

said the EES project was formally activated by the Massachusetts School Building Authority earlier this year, triggering a two-year window to formally study the project or lose grant funding that would defray 30% of the cost.

Pushback focused on the year 2034 when debt service on the ME Regional Middle High School building project will finally be retired. Voters wondered if the EES project could be delayed to avoid three to five years of juggling three school building bonds? No, said Binieris. It's how the state's funding works.

It's not an option, said Binieris. "It is a requirement."

FinCom Chair Sarah Mellish insisted the school district must consider the option of merging the elementary schools in its EES study. Tom Kehoe of Lincoln Street said voters shouldn't support the EES project at all right now,

saying Manchester should look at "the big picture of indebtedness, now and in the future."

This prompted a strong response. Sarah Creighton, former SC Chair who served on the construction committees of both the high school and Memorial, said promises of mutual support were made 25 years ago when Essex and Manchester regionalized.

"We need to keep our promise to Essex," she said.

Lindsay Banks of Forest Street agreed, pushing back on Mellish and Kehoe. She said a new EES was always in the plan. Besides, she said, Essex voters supported "this beautiful building we are in today," referring to the new, \$56 million Memorial School that opened three years ago. Article 12 passed 244 to 42.

Moving onto other ATM highlights. First up, a private harbor boat launch service will now be under town management after voters approved \$175,500 to

purchase two boats, materials, and run the Manchester launch service. The idea is to recoup nearly all of the investment and annual operating costs through membership fees, said Selectwoman Cathy Bilotta. She said between 70 and 80 mooring holders will have to enroll and pay \$550 each by May 6, 2024 in order to appropriate the money. Voters approved the article, 309 to 34.

Then, Article 8 asked voters to approve \$7.55 million in new borrowing to pay for major upgrades at the sewer treatment plant, advance the design and testing of new filtration systems to remove PFAS from our drinking water, upgrade a stretch of water main and replace all water meters with new home "smart" meters that will provide real-time consumption data and make leak detections timely and efficient.

Interestingly, it was the

...(Continued on page 4)

Weekly Weather Chart

Saturday 27 April		58°	39°
Sunday 28 April		63°	46°
Monday 29 April		53°	49°
Tuesday 30 April		63°	48°
Wednesday 1 May		58°	53°
Thursday 2 May		59°	54°
Friday 3 May		59°	54°

Weather data pulled Wednesday and is subject to change.



Gavel to Gavel

This Week's Town Meetings

Manchester Town Hall is open to the public. Public hours are 9 a.m. - 4:45 p.m. Monday through Wednesday and 9 a.m. - 6:15 p.m. on Thursday. Essex Town Hall hours are Monday through Thursday	7:30 a.m. - 3:30 p.m. Essex FinCom Tuesday, April 30 7 p.m. Essex Planning Board Wednesday, May 1 7 p.m.
--	--

IN THIS ISSUE

Obituaries	2
Town News.....	3
Letters & Library.....	4
School & Sports	6
Essex Echo.....	7
Puzzles.....	10
Pets and People	11
Real Estate.....	10, 12



Spring Hornets teams are well into their seasons now, and we've got a full page of updates on Pages 6 & 8 on the white-hot start of the season by ME Hornets Boys Lacrosse and Girls LAX. Both stories are from Jason Brisbois, the Cricket's sports reporter. Then, we see here in this beautiful photograph shot by ME Hornets Varsity Sailing Team Coach Tony Leggett, sailing is well into its spring schedule as well. All teams have matches and games this week, including Varsity Baseball who are playing at home (Memorial Field in Essex) on Saturday. (Photo Tony Leggett)



At the Manchester Club's April dinner, MBTS Harbormaster Bion Pike (here with Club President Kevin Delaney) detailed changes coming to the inner harbor and its potential as a revenue source. A moment of silence also marked the passing of Club members Ron Mastrogiacommo, Ralph Drinkwater, Jeff Peart and former member Dave Hall. Mastrogiacommo, Ralph Drinkwater, Jeff Peart and former member Dave Hall. (Courtesy Photo)

MBTA Zoning Task Force plans second community forum for April 27

By Jeff Pope

Residents of Manchester-by-the-Sea will get another chance to learn about the MBTA zoning requirements and ask questions of the Task Force at a community forum on Saturday, April 27.

The forum will take place at Manchester Essex High School from 10 a.m. to 12 noon. Members of the Task Force will be on hand to talk with the public about the areas they are currently considering for the overlay zoning and what those changes may mean to residents.

The Task Force, in a joint meeting with the Planning Board on April 18, focused on five areas of town for the state required MBTA zoning. Each of those areas has been discussed at past meetings, but they were broken down in a slightly different way.

Previously, the first district ran from Newport Park, down Pine Street, across Morse Court and Elm Street to the Powder House apartments. Town Planner Marc Resnick presented different dimensional standards for this district with one set of standards for the Newport Park area and Powder House apartments and condos, and another set of standards for the rest of the district.

Those standards for Pine Street, Morse Court and Elm Street would mostly be the same as its current zoning on setbacks and parking. The height restrictions would stay at 2.5 stories. But

it would allow three units to be built on any lot of 6,000 square feet or more, with a requirement of 2,000 square feet for any unit. A maximum of five units could be built, but that would require a lot of at least 10,000 square feet.

For Newport Park and Powder House Lane, the only single change would be in the height restriction, allowing four-story buildings.

The Task Force also considered splitting in half a second district, the one from Summer and Beach streets to the Valentine property on Tappan Street. The current modelling would allow three-story buildings and not place a cap on this number of units on a lot.

But some thought that the properties on Sea and Tappan streets should have greater setbacks and be limited to 2.5 stories. Resnick said he would look at the modelling for that to see if it affected the numbers required by the state.

The standards for the Allen Street to Lincoln Street district would mostly be the same as they are now.

The final district is in the Limited Commercial District, the current "Cape Ann Storage" facility on Beaver Dam Road. It is 7.6 acres in size. The modelling would allow 110 units or 14.5 units per acre. Buildings would be allowed to be five stories but would have 50-foot setbacks on all sides and allow for two parking spaces per unit. Because there are no units

currently in that district, all 110 units would be new to the town.

Task Force member Michael Pratt asked if similar numbers were available to the other districts. Resnick was able to provide numbers for all areas except the Pine Street to Elm Street district.

For the other districts, the numbers are:

- Beach St. to Valentine: currently 46 units; the overlay would allow for 31 more, or a total of 77.
- Allen St. To Lincoln St.: currently 32 units; the overlay would allow for 43 more, or a total of 75.
- Newport Park and Powder House: currently 85 units; the overlay would allow for 97 more, or a total of 182.

Resnick said the modelling for the Pine Street to Elm Street district would allow for 142 units, but he didn't know the current number of units. He would provide that number to the Task Force as soon as he got it.

The five districts total 40.3 acres (the state requires the town to rezone 37 acres), would provide for 568 units (the state requires 559 units) and would have an average density of 15.2 units per acre (the state requires at least 15 units per acres on average).

Planning Board member Mary Foley asked what the probability was that developers would seek to take advantage of the overlay zoning.

Resnick said he was looking to see if there was funding available for three studies, including one concerning the probability of developments. The other two would focus on including a requirement for 20 percent of the units to be listed as affordable and one on the economic impact the zoning changes would have on the town. Resnick said he had prices for two of the three studies and would be checking with Town Administrator Greg Federspiel about paying for the studies.

The Task Force is still considering what design guidelines it wants to include as part of the overlay zoning.

The death of Planning Board Chairman Ron Mastrogiacommo has required some rescheduling on the board's part. Planning Board Vice Chairman Sarah Creighton said that the hearing for Cell Signaling's application for a comprehensive permit to build a research-and-development laboratory off Atwater Avenue would start over on May 28.

Creighton said the Planning Board would continue to meet with the Task Force in joint Thursday meetings until a plan is sent to the state. She added that the Planning Board would hold Monday meetings for Planning Board-only matters.

The Manchester Cricket
 Founded in 1888.
 Published every Friday.

Erika M. Brown
 Publisher & Editorial Director

Paul Clark
 Assistant Editor

Susan Zampell
 Business Development Director

Christy King
 Digital Director

Susan Anthony
 Subscriptions & Office Mgr.

Business & Editorial Offices
 P.O. Box 359
 Manchester, MA 01944
 11R Beach Street
 Manchester, MA 01944
 www.thecricket.com
 Phone | 978.526.7171
 Email | news@thecricket.com

Display Advertising
 ads@thecricket.com

Classifieds & Legals
 classifieds@thecricket.com
 legals@thecricket.com

Postmaster, please address changes to:
 The Manchester Cricket
 PO Box 359
 Manchester, MA 01944

Contents Copyright 2020
 The Manchester Cricket, LLC.
 All rights reserved.

Subscriptions
 \$52 / year (print / digital)
 \$26 / year (digital only)

\$1.25 at newsstand

PUBLICATION NUMBER
 USPS 327-420

New England Newspaper Association
 2019 Winner For Best Website, Best Photo
 Feature Series, Best Front Page.

CLASSIFIEDS

First, the good news. For subscribers, classified ads are free (one listing / subscriber at a time, please ... and keep it to 25 words or so). For all others, submit your weekend sales, lost and found, help wanted, services, etc. to classifieds@cricketpress.com or call us at 978-526-7171 and we'll take your payment over the phone. Cost: 65 cents/word the first week and 55 cents/word thereafter. Minimum charge \$12. Deadline for Classifieds Mondays, 5 p.m.

FOR SALE

2 KAYAKS, MBTS— Two 16-foot Wilderness Systems Tsunami 160 ocean kayaks; used 10 times. Plus, two Werner paddles, two Ruffwear life vests, Thule car rack & straps. Price: \$500 for the pair. Call of txt (978) 500-6285. ... 4/29

'08 TOYOTA 4RUNNER—2008 Toyota 4Runner SR5. Moonroof, Running Boards, Roof Rack, Tow Package. Well maintained, runs great. V8 engine, 4-wheel drive, very reliable SUV. Clean title, title in hand. \$4,800. Call or text: 978-729-3995 4/29

ST. JOHN USVI COTTAGE—Caneel Trailside Cottage—Caneel Trailside Cottage is located a mile east of Cruz Bay, St. John, USVI. 2 bdr, 2 bath furnished villa, pool with palm-tree lined courtyard, veranda looking out to the south with a view of the Caribbean. Half-acre property borders USVI Nat'l Park and the trail to Caneel Bay. \$1.5 M. Photos at <https://cateredto.com/#/caneel-trailside-cottage> Contact (978) 407-8454..... TF

OUTBOARD MOTOR, MBTS—Evinrude 6-hp 2-stroke with extra propeller. \$275 firm. Call or text (978) 778-8712. 3/29

1-WK TIMESHARE - ATTITASH MT VILLAGE—Not able to use any longer. Children long gone, need to sell. Located across the street from Attitash Mountain, Bartlett, NH. "Week 4," two separate units on main floor that can be used as one. Private hallway connects units. One with full bath and Q-bed. Other full bath, washer/dryer, full kitchen, living rm, fireplace, pull down double bed. Main floor excess to pkg lot. Ski locker, use of pool & game rm. Pls call for details or to make an offer: (978) 526-7036. TF

FOR RENT
IBD MBTS VILLAGE—Nicely Furnished , 1 BR ,2 bath ,1st floor ,4 rm Condo in 2-unit Antique Colonial on School St . Original features. Recent upgrades include Granite counters and New SS Appliances. Unit has HW floors and Tile Bath. Off St Parking , WD in unit and Large Private deck. No Smoking. No Pets. Lease for 1yr or longer. \$2950 per mos Plus util. Call or Text 781.367.5247

MBTS VILLAGE—Upstairs at 38 Union St features renovated 1 bdrm/1bthrm with shower. Hdwd floors, cathedral ceilings, exposed beams, patio and back-yard, two private entrances W/D in unit Central A/C 700 sqft +/- \$2,500/month. Great light with sunshine all day. Available now thru May 2025. Come bring your ideas to this ideal home or office space in the heart of MBTS right above Gray House Antiques! Email hello@grayhouseantiques.com

LOST!

2 PICKLEBALL PADDLES—Two pickleball paddles/raquets mistakenly taken Tuesday morning (4/9) from the Summer Street courts. If you have them, please call or txt (978) 3145-0018. Thank you in advance! 4/24

SERVICES

3 STRONG BOYS ARE BACK!—Do you need help with mowing, cleaning, raking, moving furniture, weeding, or any other project? The 3 Strong Boys do it all! Call/text Atticus at 978-473-0034 or email 3strongboys.ma@gmail.com to schedule. Weekends only until school's out. TF

EXPERIENCED HOME CARETAKER, MBTS—Over 20 years experience working closely with families in the Cape Ann area. I handle every aspect of home mgt: scheduling, coordination of tradesmen, home organization with meticulous attention to detail, home transition prep for a new season or rentals (or sales market). Experience peace of mind knowing your home is in trustworthy hands. Call (978) 223-8743. 4/29

REMODELING OR NEED A HANDYMAN?—Available for interior painting, carpentry, plaster projects and more. Local and insured. Call 508-932-1442. .. TF

HANDYMAN, MBTS—Handyman for light construction, home repairs, painting, cleanups, home repairs, painting cleanups, power washing, rototilling. Fully insured. Have truck and trailer. Clean, honest, references. Contact Bill mbtshandyman@gmail.com or (978) 618-0999. TF

WANTED

MBTS RENTAL SOUGHT—I, my husband, children 7 & 5, are looking for an apartment or house in Manchester starting July/Aug/Sept during my 2-year position at Harvard. Ideally \$4000 max (excluding bills). Dr Clara Carus & Dr David Carus claracarus@fas.harvard.edu. Excellent references, very responsible. TF

GOT A USED CAR FOR SALE? Fairly reliable used car wanted! New Endicott College professor in need of fairly reliable, inexpensive, used car. Please contact susan.we@comcast.net or 978 578 1546 TF

MANCHESTER POLICE NOTES

MONDAY, APRIL 15
 9:27 a.m. Pine St., parking complaint, parking enforcement. 9:54 a.m. Bridge St., fire alarm, fire false. 3:29 p.m. Beach St., animal complaint, secured/checked. 10:16 p.m. Beach St., disturbance, secured/checked.

12:09 p.m. Old Essex Rd., erratic operator, spoken to. 1:18 p.m. Central St., citizen assist, assisted as needed.

SATURDAY, APRIL 20
 1:02 a.m. Pine St., motor vehicle stop, verbal warning. 7:23 a.m. Woodcrest Rd., suspicious activity, other. 10:22 a.m. Masconomo St., animal complaint, gone on arrival. 6:37 p.m. Pine St., suspicious activity, gone on arrival.

THURSDAY, APRIL 18
 9:36 a.m. Pine St., vehicle fire, fire confirmed. 2:15 p.m. Smiths Point Rd., animal complaint, no action taken. 7:52 p.m. Pleasant St., motor vehicle stop, written warning. 9:39 p.m. Bridge St., motor vehicle stop, verbal warning.

TUESDAY, APRIL 16
 8:23 a.m. Black Beach, animal complaint, assisted as needed. 3:34 p.m. Pleasant St., alarm, secured/checked. 5:06 p.m. Pine St., motor vehicle stop, verbal warning. 9:48 p.m. Summer St., selective enforcement, no action taken.

FRIDAY, APRIL 19
 1:29 a.m. School St., selective enforcement, no action taken. 5:06 p.m. Proctor St., animal complaint, secured/checked. 9:20 p.m. Route 128NB, motor vehicle stop, verbal warning. 11:28 p.m. Central St., disturbance, gone on arrival.

WEDNESDAY, APRIL 17
 1:46 a.m. Beach St., welfare check, spoken to. 10:28 a.m. Proctor St., alarm, secured/checked.

KETTLE COVE CATERING
 Manchester-by-the-Sea

A personal touch to lobster bakes, birthdays, celebrations & events of all kinds.

Todd Crane
 - proprietor -

(978) 998-1533

CICORIA Tree Service

Removals Pruning Spraying Fertilization

Call us for a free evaluation
 ISA CERTIFIED ARBORISTS
cicoriatree.com
 978-922-5500

MANCHESTER FRAMING
 custom picture framing

Sarah Rodier
 (978) 808-2596

Next Chapter
 Family Law & Estate Planning LLC

ANDREA LANCE, ESQ.
 36 UNION STREET
 MANCHESTER
 (978) 704-9223
NEXTCHAPTERMA.COM

PROFESSIONAL LISTINGS

MAKE IT GO AWAY!
www.makeitgoaway.net
 Call (978) 526-7452
 Email Kathy.Willy@verizon.net

MASONRY Lombardi & Son
 Brick & Stone Restoration • Repairs
 Over 40 Years Experience
 Don: 978-526-4123
lombardimasonry.com

MCINNIS PAVING, INC.
 Infra-Red Asphalt Repair Specialists
 Cold Planing • Driveway Rebuilding
 Repairs • Seal Coating • Crack Filling
 Beverly Farms, MA 01915
 Timothy McInnis 978-921-1608
 Cell: 978-375-1727 • Fax: 978-927-9602

BROOKSIDE CONTRACTING
 978-526-1414
 Manchester-by-the-Sea
keithlitka@brooksidecontracting.com
 Home Improvement • Carpentry
 Roofing • Siding
 Replacement Windows

THE ACCOUNTING DEPARTMENT
 Accounting & Bookkeeping Solutions
GAIL MCELHINNEY
 Bookkeeping / Accounting, Client Invoicing, B2B Collections, Bill Processing, 1099s, Reconciliations, Monthly Quarterly Reports, Catch Up Services, Auditing Preparation
 978-792-5433
Gail.TheAcctgDept@gmail.com

LOCAL & BEYOND
ESSEX LIMO SERVICE
EDWARD B. CUSHING
 (978) 491-1267
essexlimoservice@yahoo.com

MANCHESTER CRICKET
 Local weekly news since 1888.

HOME CLEANING SERVICE
 By Polani
 Dependable, Friendly, Honest Cleaners. Ask about our happy. Local References
 781-656-3414

NOTICE OF ANNUAL MEETING
 THE ANNUAL MEETING OF THE MANCHESTER ESSEX EDUCATION FUND SHALL BE HELD ON WEDNESDAY MAY 1, 2024 AT 3:00 P.M. IN THE THIRD FLOOR CONFERENCE ROOM OF THE TRUST AND FINANCIAL SERVICES DEPARTMENT OF THE CAPE ANN SAVINGS BANK, 109 MAIN STREET, GLOUCESTER, MASSACHUSETTS.



Photo: T.D. West

Co-designing a Flood Resilient Masco Park

By Gregory T. Federspiel

Residents got a taste of what is in store for certain areas of Town with the flooding that occurred this past winter.

While no especially large storm struck, extensive high waters flooded Masconomo Park multiple times and even made Beach Street impassable once during high tide. Other low-lying areas were also flooded. We can expect this type of flooding to happen more frequently and cause more damage unless we take measures to better hold back or otherwise accommodate water.

The recently completed coastal vulnerability study (an award-winning analysis of future flooding in and around the harbor and options for actions which is available on the Town's website) recommended, among other steps, that the community take a fresh look at how Masconomo Park is laid out and what changes we might want to make to allow continued use in the face of flooding. With additional grant funds in hand, the Town is embarking on taking this fresh look.

A three-day design "charrette" is scheduled starting Tuesday, April 30th at 10 a.m.

Our consulting engineers and landscape architects from Fuss and O'Neill will assist in leading a hands-on set of public open sessions aimed at co-designing solutions for flooding at Masconomo Park. Residents are invited to first gather at the American Legion Hall behind Town Hall at 10 a.m. to

With any luck, we should be able to secure some grant support to make needed improvements. And the process we follow should serve as a model ...

gain background knowledge of the flooding we can expect with sea level rise and storm surges impacting the filled tide lands that comprise the Park. This Tuesday public forum will be followed by a public "walkshop" from 11 a.m. - 12:30 p.m. at Masconomo Park. Participants will walk the park area and discuss the challenges and potential design solutions in the field with the design team. This is to be a highly interactive session where resident input will be encouraged.

The consultants will take what they observed and heard people say in terms of what community amenities we want from the park and begin sketching out design options. They will work on these throughout the rest of Tuesday and Wednesday with drop-in times made available on Wednesday for the public to informally comment on the options being developed. Again, the premise here is that public feedback helps guide the work of the design team.

Then by Thursday evening another public forum will be held back at the American Legion Hall from 6-7:30 p.m. to review the final set of options and to gain additional

public input on which options are preferred. The design team will walk through all that they heard from residents and how they translated this input into design options for the park. Residents will be asked to comment on the various options.

With this last round of public input in hand, the design team will craft a set of final recommendations the Town can consider implementing in the future.

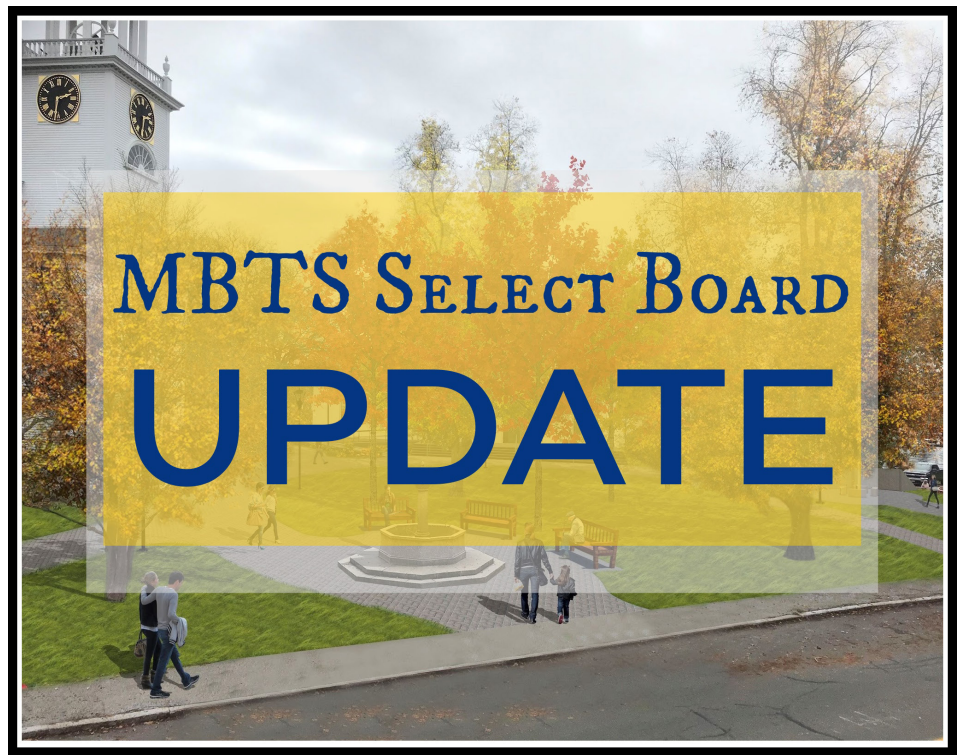
The result should be a set of design options that the public helped develop and that we can implement over time. While the park has experienced flooding, we are not at a crisis point yet and have time to make improvements that will enhance the park's ability to function as public space while adjusting to rising seas and bigger storms.

With any luck we should be able to secure some grant support to make needed improvements. And the process we follow should serve as a model of community engagement that generates a solution with general public support. We hope you can take time over the course of Tuesday through Thursday, April 30th, May 1st and 2nd to participate in this unique opportunity. Your schedule precludes you from attending? You can send along comments ahead of time or react to the materials that will be posted to the website.

P.S.: A big thank you to all who came out to participate in the Annual Town Meeting and to the many staff and volunteers who make it all happen!

Tides & Sun Chart For The Week Ahead

DATE	HIGH				LOW				☀️	
	AM	FT	PM	FT	AM	FT	PM	FT	RISE	SET
26 Fri	1:22	9.8	2:01	8.7	8:11	0.3	8:19	1.4	5:42	7:39
27 Sat	1:59	9.9	2:41	8.6	8:55	0.3	9:02	1.5	5:40	7:40
28 Sun	2:41	9.9	3:25	8.6	9:40	0.4	9:48	1.6	5:39	7:41
29 Mon	3:27	9.9	4:14	8.5	10:28	0.5	10:38	1.6	5:37	7:42
30 Tue	4:19	9.8	5:07	8.5	11:20	0.6	11:33	1.6	5:36	7:44
1 Wed	5:16	9.7	6:05	8.7			12:15	0.7	5:35	7:45
2 Thu	6:19	9.7	7:07	8.9	12:32	1.4	1:13	0.6	5:33	7:46



BOARD UPDATES

MBTA Zoning Public Forum: On Saturday, April 27 at 10 a.m. at the High School Learning Commons the MBTA Zoning Task Force and Planning Board will hold a Public Forum to discuss the proposed MBTA Zoning Districts. Please come ask questions and give important feedback.

Beach Tag Sale: Last chance to purchase 2024 Singing Beach Walk-On Tags at the discounted rate of \$25. Prices will increase to \$35 after April 30 and will only be sold at the beach during operating hours starting Memorial Day. Purchases made in April can be made online at mbtsrec.com or in the Parks & Recreation office on Tuesdays and Thursdays. Everyone between the ages of 12

and 65 needs a tag to access the beach.

Hydrant Flushing: The semi-annual hydrant flushing will begin on April 22. Flushing will take place Monday through Thursday from 7 p.m. If you experience dirty water, run a cold tap until clear.

Cemetery Clean Up: All decorations and greenery must be removed from Manchester cemeteries by April 30. Any leftover décor will be disposed of by DPW.

Planning Board Vacancy: Due to the unexpected vacancy on the Planning Board, the Town is seeking letters of interest from the community to help fill the elected position through May 2025. Please contact Debbie Powers at powersd@manchester.

ma.us to learn more by May 1.

Diaper Drive: The Board of Health is sponsoring a Diaper Drive during the month of April to benefit local families in need. Please consider dropping a diaper donation off at Town Hall, Library, Police Station, Crosby's, and 4 Beach.

Trash, recycling, and compost collection: Regular Schedule. Please place curbside by 7 a.m. on day of collection. Transfer Station is open on Wednesdays from 7:30 a.m. to 3 p.m. and Saturdays from 10 a.m. to 3 p.m.

Follow Us on Facebook, Instagram, and X @townofmbts and visit the Town website Manchester.ma.us to stay informed.

WHAT WAS HAPPENING

90 YEARS AGO - 1934

Robert Ramsdell on Pine St., shot a muskrat that was under the Piazza of Mr. Ramsdell's home last Thursday. He wouldn't have bothered the animal had the rodent not started to gnaw a hole in the side of the house in order to gain entrance.

Mr. Harry S. Tappan, chairman of the Board of Selectmen, desires to inform the citizens of Manchester that he has received the offer of a lot of tillage land that can be made available for cottage gardens and should any of our local resident's desire to plant a small garden this season they will be assigned a small piece of land for that purpose.

75 YEARS AGO - 1949

Tuesday morning, May 3, is the time to be looking for that very popular breakfast which the Harmony Guild will serve at the Congregational Chapel. This breakfast, which is an annual affair, promises to be every bit as good this year as in the past.

Awards were given to Scouts of the Beverly district (which includes Manchester) Thursday evening of last week, at the Scout Court of Honor, which was held in Legion Hall. It was a most impressive ceremony, with the scouts receiving not

only their awards but fitting honor for their accomplishments.

60 YEARS AGO - 1964

The annual Spring Concert of the Manchester Schools, under the direction of Miss Jane O'Brien, delighted a capacity audience at the Memorial School auditorium last Friday Night. The musical program was presented in four parts by the band, under the direction of Allan Earle; the Memorial School Glee Club, Junior High Glee Club and the Senior High Glee Club.

Navy Lieutenant junior grade James D. Conlon, son of Mr. and Mrs. Conlon of Standley Ave, Manchester, Mass., returned to Brunswick, Maine, April 10 with Patrol Squadron Ten after completing a tour of duty with the Sixth Fleet in the Mediterranean at the Naval Air Facility, Sigonella, Sicily.

45 YEARS AGO - 1979

The Fire Department, Monday night, responded to the home of Robert Landry, 18 North Street for a kitchen fire. The fire was confined to a stove. There was no major damage.

The Manchester High School Debate Team added five trophies to its treasure chest in capturing the sweepstakes award at the Wellsley

High School Debate Tournament on April 14. The team compiled a record of 13 wins and three losses.

30 YEARS AGO - 1994

Nearly 60 generous individuals and organizations have donated funds to help the Town reach its goal of \$8,000 to replace the existing rotten wooden flagpole with a new fiberglass pole.

Lang Porter of Lang's on Union St., has been chosen as Manchester's 1994 Small Business Person of the Year. A reception in her honor will be held at Seven Central Public House on Wednesday evening, May 4 at 5 p.m.

15 YEARS AGO - 2009

On April 8th an eager group of volunteers and local contractors restored the pond area on Winthrop Field by installing hundreds of native plants and a beautiful swamp oak tree. Their efforts finished the pond project which was undertaken by the Winthrop Field Committee. Last Saturday a volunteer crew installed a new bulletin board to assist hikers entering Wilderness Conservation Area trails from upper Pine Street. The board, built by Bill Robinson, Mike Dwyer and Brad Knowlton over the winter, displays an illustrated trail map and other useful information.



CARPENTER & MACNEILLE

— Creating Architectural Legacies —

978.768.7900 | www.carpmac.com

CAPE ANN

Symphony

THE THREE BS

SUNDAY, MAY 2, 2PM

MANCHESTER-ESSEX RHS

TICKETS AND INFO: 978-281-0543 OR CAPEANNSYMPHONY.ORG

\$45 ADULTS	\$40 SENIORS (65+)	\$20 STUDENTS OF ANY AGE	\$5 YOUTH (12 AND UNDER)
----------------	--------------------------	--------------------------------	--------------------------------



The Cricket publishes every letter it receives. Letters should be original, no more than 400-600 words and written in a general spirit of discourse, signed and include an email/phone and a valid address in case we have questions. We may edit letters for clarity and accuracy. We do not accept multiple letters on a single issue by the same author. Longer pieces (up to 1,000 words) may be submitted for consideration as an Op-Ed Commentary. Please send submissions to letters@cricketpress.com.

New Federal PFAS Standard Are In: What it Means for MBTS

On April 10, 2024, the United States Environmental Protection Agency (EPA) issued National Primary Drinking Water Regulations (NPDWR)

To the Editor,

for Per- and Polyfluoroalkyl Substances (PFAS) establishing Maximum Contaminant Levels (MCLs) for six PFAS.

The new EPA standards are lower than the standards set by the Massachusetts Department of Environmental Protection (DEP) in 2021, and generally in line with the proposal EPA set forth in March of 2023. Both DEP and EPA utilize a similar approach to these chemicals, however, given that the EPA regulations are lower, DEP will adopt the EPA standards.

The limits now established by the EPA (to be adopted by DEP) will put the Town's Lincoln Street Well out of compliance. The regulation is based on running annual average (RAA) which makes it unclear if the Gravelly Pond finished water would be out of compliance, however we have had individual samples test above the standards (note: all test results are posted on the Town's PFAS website).

Based on the current understanding the Town would have five years (sometime in

2029) to come into compliance.

The good news is that DPW has planned on this outcome and already considered treatment possibilities for the Lincoln Street Well and for Gravelly Pond, and the potential of combining the water sources for treatment of PFAS at one location. We looked at likely construction costs, operating costs and assumed full life cycle costs of these alternatives. We also considered non-cost factors like redundancy and improving finished water quality. We believe the best path forward is to have separate treatment processes at the two different facilities. The completed studies are also available at the above link.

We are currently in the midst of piloting various filter media and treatment technologies which will inform our final design requirements for bidding and construction. This is a required step in the process of changing/adding treatment and is submitted to DEP for review and approval.

It is important to note that although new technologies may emerge for treatment of PFAS, treatment technologies for use in drinking water are highly regulated to ensure continuous and long-term compliance, with no negative impacts to public health or other unintended consequences. Our piloting efforts are being funded with leftover federal ARPA funds.

Future phases of design, permitting and construction will be in the tens of millions of dollars and take until the 2029 deadline to complete, although we will strive to complete the work as soon as possible. The Town has been successful in getting an initial -\$960,000 in federal funding for design and we are asking for additional Town funds (via a bonding warrant article) at the April 2024 Annual Town Meeting and subsequent ballot vote.

Now that we have the final standards, we will continue to pursue other funding options as they become available.

The Town will continue to update the website with testing results and other information as we receive it. We appreciate your support as our understanding of the impacts of these PFAS standards to our public water system evolves. It is important to note that nothing from our source water, treatment process, or distribution system has demonstrably changed for many years with respect to PFAS; it is only the ability to test for these substances (parts per trillion) and continued research on the subject that necessitates these changes at this time. We will continue to follow the best available information and implement any required changes to our processes as soon as possible.

As always, please stop by or call the DPW office at 978-526-1242 with any additional questions.

Chuck Dam
DPW Director

LIBRARY NEWS



STONY THE ROAD

RECONSTRUCTION, WHITE SUPREMACY, AND THE RISE OF JIM CROW



HENRY LOUIS GATES, JR.

Mindfulness Meditation at the First Parish Church Meeting Room

Every Tuesday from 11 a.m.-12 noon in the teen loft with Alida Bryant. Beginners and experienced meditators are welcome. There will be guided meditation, some silence, and discussion. Please register if this is your first time coming to this program. We need either an email or a phone number in case we need to cancel or change venues.

Book Donations

Help support the annual book sale on the library lawn during Festival by the Sea on August 3. Please donate books you no longer want but are in good enough shape that you would buy them. Our collection location is MERHS, not the library. Drop off on Saturday, May 18, and June 15 from 9 a.m.-12 noon.

Diversity Matters Book Group

Tuesday, April 30 from 1-2 p.m. We will discuss "Stony the Road": Reconstruction, White Supremacy, and the Rise of Jim Crow" by Henry Louis Gates, Jr.

Mystery Book Group

Friday, April 26 from 10:30-11:30 a.m. We will discuss "The Maid" by Nita Prose.

Hearthside Book Group

Tuesday, May 7 from 4-5 p.m.

We will discuss "The First Ladies" by Marie Benedict and Victoria Christopher Murray.

Free Friday Movie

Friday, April 26 from 6-8 p.m. We will be showing a movie in the Reference Room on the 4th Friday of every month. We will supply the popcorn, feel free to bring covered, non-alcoholic beverages. Check out what is showing on our website.

Plant Swap

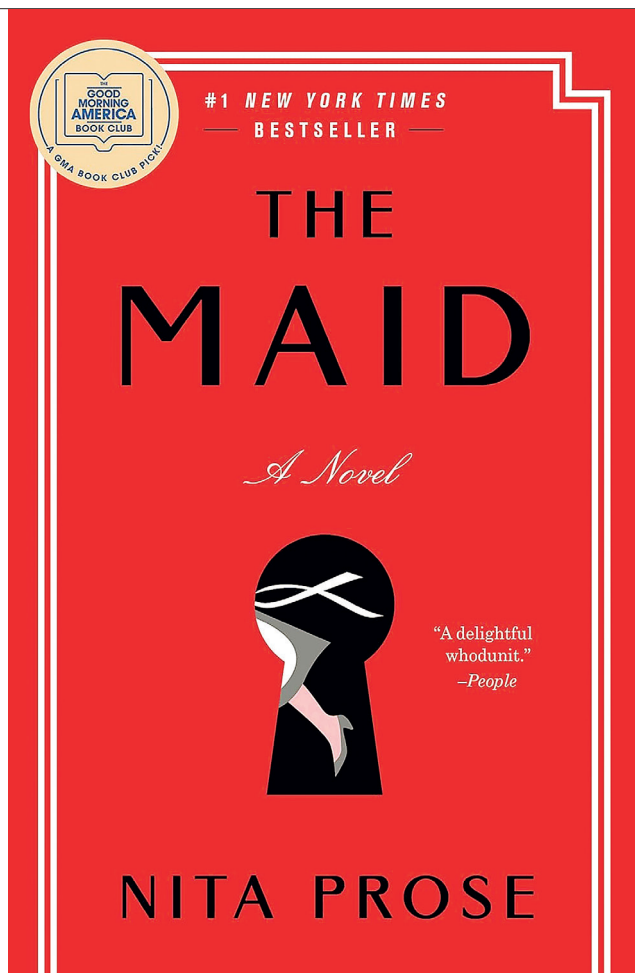
Saturday, April 27 from 11 a.m.-1 p.m. Have some spider plants that are ready to propagate? Buy an eight pack of flowers and only need six? Why not swap the plants with your neighbors? Trade some spider plants for some aloe. Some zucchini for some tomatoes. Notice: These plants are from home gardens and may carry pests and disease that may not be healthy for your garden. Trade with caution and when you can, remove the soil from new plants and plant them as bare roots to limit the spread.

Manchester Reads 2024

This May discover the universe together with a space-themed Manchester Reads. Check out books, programs for all ages, crafts and even a telescope.

MBTS Library Renovation: Ask the Director

Tuesdays beginning from 11



a.m.-12 noon. The MBTS Library is in the process of applying for grant funding to renovate and expand the library. The Library Director will hold open table hours each Tuesday in the library. Drop in to ask questions and learn more about the project.

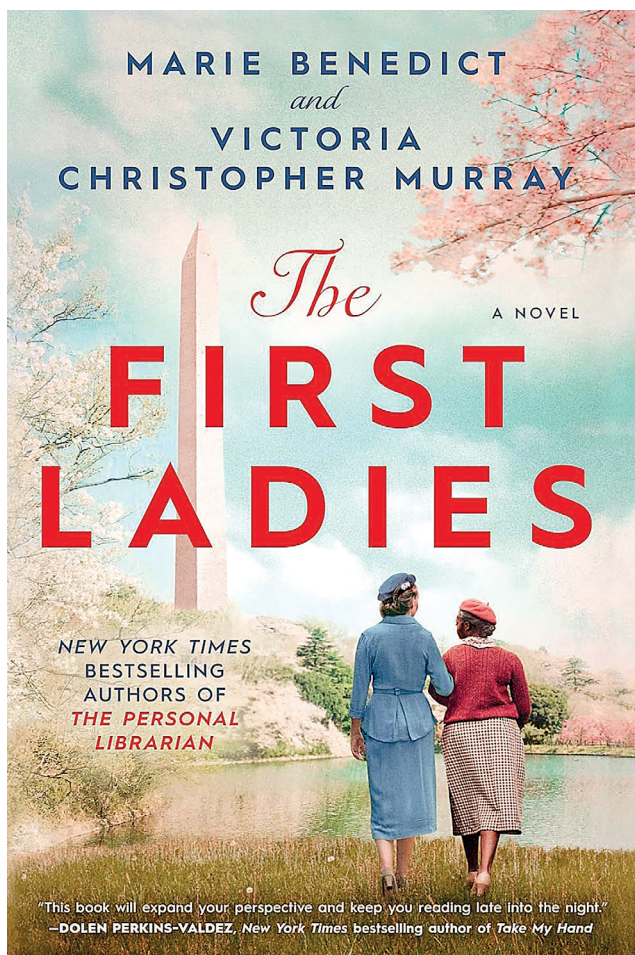
Shut Up and Write (Virtual) Every Thursday from 10:30 a.m.-12:15 p.m. Join a community of writers and artists on Zoom who just want to write. Come any time. No need to share, no need to critique or be critiqued.

MPL Children's Events:

Winter and Spring Storytimes Wednesdays from 10:30-11:15 a.m. Join Miss Audrey for Storytime for children ages 0-5 with their caregivers. We will share books, songs, and games. This program runs through April 24th.

Plant a Seed - Paint a Pot

Saturday, April 27 from 11 a.m.- 1 p.m. During the plant swap, kids and kids of all ages can paint a pot and plant a seed of their choice. Bring home your creations and watch it grow.



...(Continued from page 1)

\$1 million smart meter line item of that drove most of the article's debate. Morgan Evans of Boardman Ave. questioned if the \$500/home was not a good ROI, and moved to remove it from the ask. Caroline Epps of Proctor Street said she signed up for the smart meter pilot program after a water leak in her family home brought in a \$3,000 water bill in just one quarter. She said the smart meters are an amazing insurance in case of a leak like hers. She recommended supporting the smart meters. MBTS DPW Director Chuck Dam said the state already requires water usage meters, and Manchester's meters are more than 20 years old. The amendment to remove the line item failed, and then Article 8 passed easily, 290 to 33. Because Article 8 requires capital borrowing, it must be ratified by a successful ballot vote at the Town Election on May 21.

Finally, voters approved all Community Preservation Committee recommended projects totaling \$481,670 that include Winthrop Field Drainage (\$10,000), Masconomo Park ADA Accessibility Study (\$10,000), Powder House Hill Parking and Access Easement (\$20,000), Resurface Basketball Court at Sweeney Park (\$28,500), Double Lifeguard Chair for Singing (\$4,500), Restoration of Town Cemeteries (\$25,000), and funding for the Manchester Affordable Housing Trust Project Funding (\$200,000).



Photos: Paul Clark

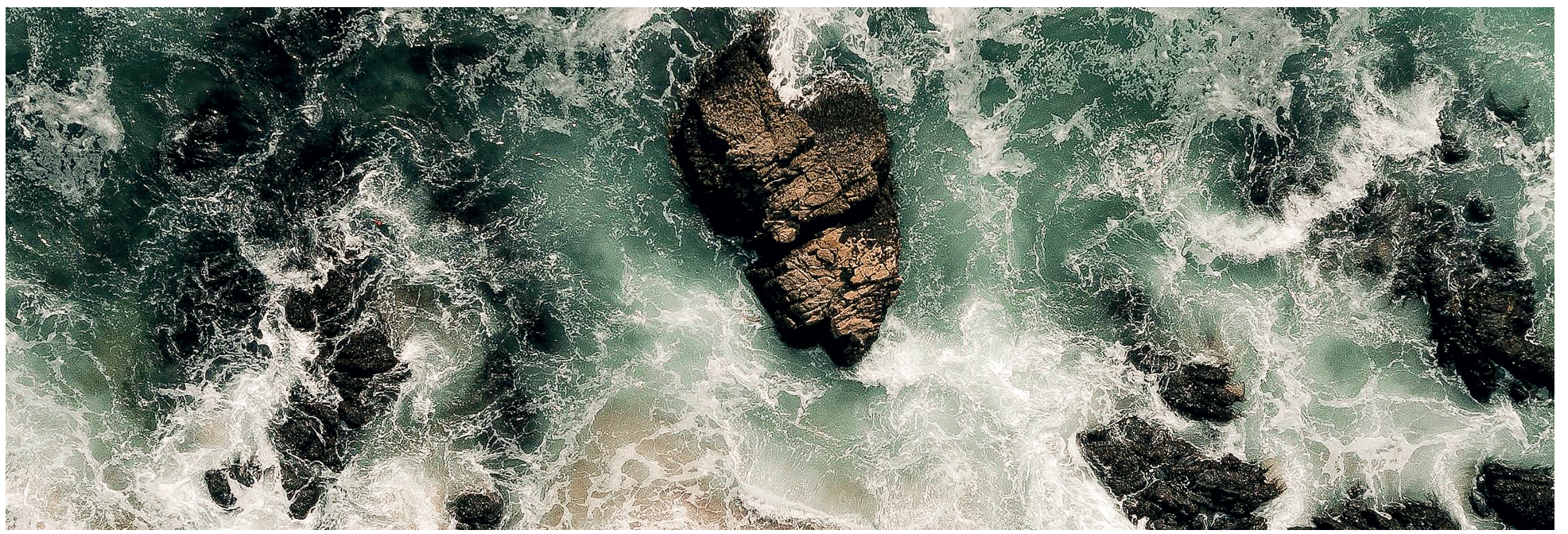


SALES • SERVICE • RENTALS
Happy EBIKES
 COME VISIT OUR NEW LOCATION
 @ 21C LEXINGTON AVE, MAGNOLIA
Grand opening Feb 2
 (978) 712-8012 • WE FIX ALL MAKES

Feel Better, Stimulate Your Senses
"Spring For Cleaning"

 Complete House Detail
 Regular Routines
 Brass/Silver Polishing
 Kitchen Floors Restored
 Post-Construction
 Window Washing
 Chandlers
978-526-4741
 Estate Caretaking & Management Services Available | Bonded & Insured
 Post Office Box 52, MANCHESTER-BY-THE-SEA, MA 01944

Gloucester Stage Brings Together Art, Activism, Community in Three Days of Climate Action Plays



A three-day performance festival will take place this weekend in the name of climate change at the Gloucester Stage Company. Called **Water's Rising: Festival of New Climate Action Plays**, the inaugural event is hooked to Earth Day and will feature three staged readings of three new plays that delve into the multifaceted themes of climate change.

Starting this Friday, April 26 to Sunday, April 28, the play will begin each day at 7 p.m. and include three productions: **A Few Fun Facts About Greenland** by Maximilian Gill, **Cincinnati by the Sea** by Hannah Vaughn, and **If nobody does remarkable things** by Emma Gibson.

Each selected play illuminates the climate crisis from a vastly different perspective and unique viewpoints, transporting us from Greenland to post-flood Cincinnati to the International Space Station.

"After a summer in Gloucester, it became obvious how critical and ephemeral the waters are to this community. When I lived in Ithaca, NY I passed a piece of graffiti on my daily commute saying 'THE WATER IS RISING,'" said the theater's Artistic Director Rebecca Bradshaw. "That forewarning prodded me to do something more than talk to folks within my bubble or donate to my local climate activist. The goal of this festival is to marry poignant storytelling of live theatre with this urgent message. Each reading will be paired with a local conservationist, researcher, and/or climate activist that can speak to the themes of the piece and help to answer the age-old question, 'but what can I do?'. I hope the festival will leave audiences moved by the performances and create impactful conversations to take with them."

Located in Gloucester and its more than 62 miles of shoreline, the theater recognizes the urgency of addressing climate change with the building itself located in FEMA's high-risk flood zone. That fundamental fact is what inspired the production, said GSC Managing Director Christopher Griffith.

"With our stage door of

if nobody does remarkable things
by Emma Gibson

Directed by Lyndsay Allyn Cox

Kelly Chick* as Aunt June Celeste Oliva* as Anna Nael Nacer* as Joel

Dennis Trainor Jr.* as Paul Bridget Delaney as Young June Read by Carmen Serrato

A Few Fun Facts About GREENLAND
by Maximilian Gill

Directed by Carla Mirabal Rodriguez

Adrienne Krstansky* as Marcy Lily Narbonne* as Devon Sarah Oakes Muirhead* as Audra

Nael Nacer* as Kurt Harsh J. Gagoomal as Sandeep Read by Malachi Rosen

For this festival, submissions were invited for full-length plays tackling climate action, with a specific emphasis on coastal climate change. In the end, all environmental advocacy themes were considered. The theater's literary team selected three plays from over 240 submissions for this weekend's performance program, each matched with a local director who resonated deeply with the work.

"By pairing art with advocacy, we can deepen our connection to our earth's future," said Griffith.

All performances for **Water's Rising: Festival of New Climate Action Plays**, are Friday, Saturday and Sunday at 7 p.m. at Gloucester Stage Company located at 267 East Main Street, Gloucester. Tickets are \$20, and a Festival Pass to all three plays is \$50. Info and tickets at gloucesterstage.com.

PLAY SCHEDULE:

Friday, April 26, 7 p.m. | A FEW FUN FACTS ABOUT GREENLAND by Maximilian Gill unfolds amidst the vast expanse of the Greenland ice cap. Here, an astrophysicist leads a team searching for evidence of an extraterrestrial object. However, the arrival of a glaciologist researching glacier melt and a tech entrepreneur financing the endeavor throws her project into disarray. As scientific inquiry clashes with the human need to believe in something greater, everyone has strong

opinions on how to save the planet.

Saturday, April 27, 7 p.m. | CINCINNATI BY THE SEA by Hannah Vaughn unveils a post-deluge world where a year and a half has passed since the Great Flood. While grappling with the fact that her wife Cleo has abandoned the family, Freddie finds her life unraveling at the seams. Amidst the tumultuous aftermath, she struggles to keep her family together as they face life's daily challenges. Her relationship with her son, Noah, reaches a breaking point, and he runs away, leaving her one last chance to find him and save her fractured family.

Sunday, April 28, 7 p.m. | IF NOBODY DOES REMARKABLE THINGS by Emma Gibson, delves into themes of climate change and forgiveness, probing the consequences of irreparable actions and the boundaries of redemption. Amidst the tumult of a category 6 dust storm, a cargo ship took shelter in the nearby harbor. Onboard is Joel, who needs somewhere to stay. While Paul advocates for his rescue, Anna hesitates, haunted by what Joel did 14 years ago.

In addition to the staged readings, each play will be followed by a talkback session featuring climate experts. These experts will address the themes of the theatrical piece, highlight organizations taking action, and discuss the impact of climate change on Gloucester and the global landscape.

CINCINNATI BY THE SEA
by Hannah Vaughn

Directed by Rebecca Bradshaw*

Stacy Fischer* as Freddie Patrice Jean Baptise* as Cleo Johnny Esposito as Noah

Bryce Mathieu as Paul Cheryl McMahon* as Grandma Pip Read by Anya Saben

our iconic waterfront theater overlooking Smith's Cove along Rocky Neck, we want to celebrate our surroundings while creating avenues for awareness and continued

conversation about our collective future," said Griffith. "In the face of one of the most significant and immediate global challenges, Gloucester Stage is proud

to present these impactful plays that remind us of our shared responsibility toward the planet and underscore the imperative for climate action."



interior design services
Jennifer Coles, principal
colescoloranddesign.com
jen@colescoloranddesign.com
978.808.7481



Are you ready for spring?

Architect: Julia Chuslo | Photography: Jack Vatcher

PAYNE BOUCHIER
FINE BUILDERS
617.445.4323
paynebouchier.com

Residential Building & Renovations
Exceptional Staircases & Millwork
General Contracting



In the Hornets' Nest



son finished with 9 saves, and sophomore goalie Owen Oliver-Meehan tallied one save in the win. The final score was 14-4 in favor of the Hornets, who improved to 4-1 on the season.

Next game is set for 4/23 as Manchester opens up their CAL play hosting Lynnfield at Hyland field at 5:30pm. This will be the first time the Hornets and Pioneers will face each other since last year's second round playoff game when Lynnfield bounced the Hornets from the playoffs in the second round in back-to-back years.

SAILING:

We continued practicing during the Vacation week, and with our new assistant coach, George Lockwood, have been learning the finer points of sail trim, boat speed and racing tactics.

We traveled to Lake Massapoag on Sunday (4/21) for one of the top fleet racing events of the season, the "Sharon Invitational". This event brings together 18 teams with the top sailors in the Mass Bay League, for a full day of fleet racing, with two divisions racing six races apiece. The courses consisted of four legs, two rounds of a beat to windward with a downwind run to the finish.

Racing on a lake is "trickier" than racing on the ocean, because the shore has a much larger impact on the wind than we typically see on the open waters of Manchester's outer harbor. Not only does the wind vary in direction, but also in strength, and this Sunday the variations were even greater than usual with 40-degree shifts and winds from flat calm up to 18 mph.

Ian Carlin and Cole Cote are our A Division skipper and crew. They started out strongly with a second-place finish in the first race, showing newfound confidence in the crowded starts, while staying in good position for the wind shifts on the upwind legs. The duo added a fourth, fifth, seventh and two tenths for a total of 38 points, ending up in 6th place overall in A Division. In B Division, Nicholas Bock and Grey Brooks started a little slower, having trouble in the crowded starts and puzzling wind shifts, while ending up in a protest in the fourth race, dropping their 4th place finish to a DSQ. They ended on a very positive note, however, by getting into good position on the starting line at the last race and breaking through to a well-earned second place.

We expected the local Sharon and Wellesley teams to be dominant, with Duxbury providing strong competition. We ended up in seventh place out of eighteen and could have been two places higher without the DSQ. I had been hoping for a top half finish and was very happy with the seventh.

I have high expectations for the rest of the season. We will be racing Beverly and Pingree this week, and then going up to Portland for a qualifying event for the New England Championship.

BASEBALL:

On Monday, April 8, the Hornets traveled to Marblehead. The Hornets lost 4-2. Troy Flood pitched well, going 6 innings and allowing 3 runs. Parker Woodman had an RBI pinch hit single and Matt Mckenna had an RBI hit by pitch. Kevin Mckenna had a double and a run scored. Satchel Rubin was 1-2 with a run scored. Matteo Sarmanian had a hit and a stolen base.

On Wednesday, April 10, the Hornets defeated Hamilton-Wenham 6-1. This was the Hornets first win against Hamilton-Wenham in three seasons. Matteo Sarmanian threw 5 2/3 innings, striking out 6. He also scored 2 runs on offense. Troy Flood and Parker Woodman both drove in 2 runs. Ross Edelstein had an RBI single. Kevin Mckenna had 2 hits in the day with a run scored and stolen base.

During April Vacation week, the Hornets traveled to Ipswich on Tuesday, April 16 and defeated Ipswich 4-2. Troy Flood pitched a complete game letting up 2 runs and had 6 K's. Troy offensively walked twice, stole 3 bases, and scored a run. Nick Brown and Satchel Rubin each had an RBI. Parker Woodman was 1-1 with 2 stolen bases, a run scored and 2 BB.

Fast forward to Sunday, April 21, the Hornets hosted Amesbury and defeated the Red Hawks 13-3. Matteo Sarmanian pitched 5 2/3 innings, striking out 10 and allowing 2 hits and no runs. Troy Flood was 2-3 with a 3 run HR. Ross Edelstein, Kevin Mckenna, Parker Woodman, and Satchel Rubin each had RBIs.

The team is now 3-2 over-



Caught in a pickle. Hornet #1 Abby Aiello forces her Swampscott opponent into a run down with #7 Katie Crompton. ME dropped this game 4-14. The Lady Hornets stand at 3-3 for the season. Photo Paul Clark

all, 3-0 in the CAL.

SOFTBALL:

The Hornets got a gutsy performance from Anna Gardner who went the distance on Monday under the lights with 17K's to get the win 11-10 over Ipswich! Anna went 2-5 with four stolen bases and scored twice. Abby Aiello was 1 for 3 with 2 RBIs. Lucy Parmelee was 2 for 2 with RBIs. Katie Crompton was 2 for 4 with 2 RBIs.

The next day the Hornets dropped the rematch to Swampscott 14-4. It was

a good hitting day for Anna Gardner who was 3 for 4 with 2 doubles. Abby Aiello was 2 for 4 with an RBI. Penelope Riggs was 3 for 4 with an RBI. Katie Crompton was 2 for 4 with an RBI. The Hornets got great outfield play from Cate Vendt and Bianca Torri.

BOYS LACROSSE:

The Manchester Essex boys' lacrosse team hit the road for their second and final game of spring break on Tuesday morning for a morning game vs Division 2 school Woburn HS. Historically, the

two teams have always met during spring break week for an early season battle before opening up the ladder part of CAL play.

The Tanners would score first halfway through the first period, while the Hornets had plenty of early chances on extra man opportunities. However, Mac Edgerton would open up the scoring for ME and his first of his six tallies on the day with 1:30 remaining in the first quarter to tie the game at 1.

Manchester Essex would score four goals in the sec-

ond quarter to go up 5-2 at halftime. In the second half, dominance was shown once again by the Hornets offense, as they outscored the Tanners 9-2. Possessions were controlled at the X thanks to Quinn Brady, and Freshman Turner Valeo who went 5/5 on the day. Credit where it's due, the Hornets defense had another strong campaign led by sophomore Joe Glass who played shut down man defense, while Jarret Croft and Aaron Crompton held it down for the defense. Sophomore goalie Connor Dick-

son finished with 9 saves,

ScottEnergy Community Bulletin Board

The Manchester-Essex Rotary Club's Kentucky Derby PARTY & AUCTION 

Saturday May 4, 2024 5:30-8:30 PM

The American Legion | Manchester, MA

Full Buffet Dinner & Cash Bar

Tickets \$60 in advance, \$70 at the door

Buy tickets online www.manchesteressexrotary.org

Raffles
Squares
Trifecta

Best Hat Contest
Ladies & Gents
Dozen Roses & Woodmans Reserve
Must be 21 to Win

All proceeds to benefit Manchester-Essex Rotary Club Scholarship Fund
Pay it Forward in Your Community

Supporting Our Community Since 1946

ScottEnergy
Cleaner Better Fuel. Unmatched Service.

800-736-4929
ScottEnergyCo.com

This ad space has been purchased by the ScottEnergy Company and is offered free of charge to local non-profits 501(c)(3) and public organizations. Call the Manchester Cricket at 978-526-7171 to reserve this space for your group.

Encouraging Early Returns for ME Girls Lacrosse

By Jason Brisbois

Tallying a 3-1 record to begin the season constitutes what most would consider a strong, early start to the season. When asked about it, Manchester Essex girls' lacrosse coach Nan Gorton stresses the "early" part of that description.

"I think about the season in three parts," Gorton explains. "One, before spring break. Two, after spring break. Three, postseason. Before Spring break is a time when we try to set the tone for the year. We try to have the girls come together as a team and make a commitment to each other. With the increasing demands from

outside of school extracurriculars, sports and family commitments, that is becoming increasingly difficult. We have felt those pressures as a team.

Gorton adds: "That being said, we have had a decent start. We have learned a lot and we are choosing to take those lessons into the second part of the season. The goal is to continue making each other a priority and work as hard as we can when we are all together."

Despite getting three out of four wins at the start of the spring season, Gorton is more interested in how her team responds to challenges rather than tone-setting or early momentum at this

point. Even with three wins over Marblehead, Masconomet and Georgetown -- as well as a close, 6-4 loss to rival Ipswich on April 5 -- she believes this group is still in that early stage of coming together and figuring things out.

"I think perhaps even more important than a good start is having a dose of adversity," says Gorton. "Although our record reflects a strong start, we are not satisfied with how we have played so far and are looking to reach deeper to find our potential. We have had moments of brilliance; great passes, terrific goals, some great hustle plays and strong saves from Brigid, but we can be better. My job is to balance learning how to give all of yourself toward a common goal, while making sure sport stays in the right perspective. We are not out here to add pressure to the girls, something that all high school kids are feeling more and more, but that doesn't mean that we can expect less than our full effort. This is when lacrosse really be-

comes a vehicle for learning life lessons."

Those moments of brilliance have been evident even at this stage of the season. Gorton lauded her team's ability to secure 16 draw controls during a 15-6 victory against Marblehead to open the season at the start of the month, followed by six different players scoring goals and providing assists in a 14-2 win over Georgetown two days later. Elle Morgan scored her first varsity goal against Georgetown, and Shields Edgerton scored her first of the season in a 13-2 win over Masco on April 9.

The most adversity that the Hornets have faced to this point came in the loss to Ipswich on April 5.

"The Ipswich game is always a battle and this year's first match-up against them was a nail-biter," explains Gorton. "Mechi O'Neil had two goals, Ella Chafe had one and Sylvie McCavanagh had one. We are hoping to draw from the last few times we have played Ipswich and lost by two and get a 'W' at home the next time we play them in May.

...(Continued on page 8)

BARTLETT

BARTLETT TREE EXPERTS

SCIENTIFIC TREE CARE SINCE 1907

ESSEX ECHO.

Town Administrator's Report

Board of Selectmen's Meeting
of April 22, 2024
Report covers from April 6,
2024 to April 19, 2024

Planning Board Public Hearing for Zoning Amendment Proposals

The Town Administrator (TA) attended the subject hearing along with Chairman Pereen on April 17, 2024. The Planning Board provided summaries of each of the proposed Annual Town Meeting (ATM) articles seeking various zoning bylaw amendments. Members of the public were in attendance and asked relatively few questions. No major concerns were raised by the public.

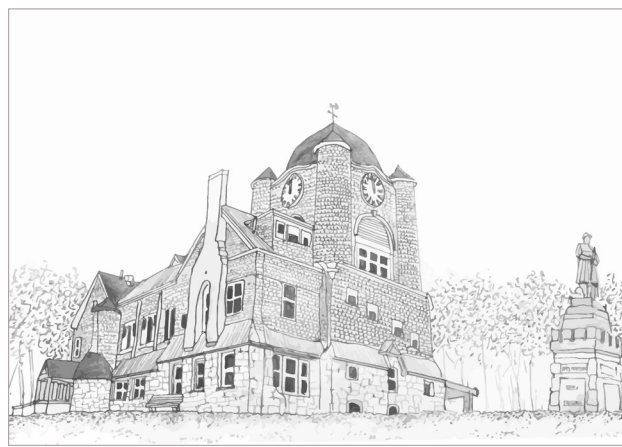
Camera System for Centennial Grove and Upgrade of Video Servers

As the Board has discussed in the past, the new fiber optic spur system from the Water Filtration Plant to two locations at the Centennial Grove is complete and is capable of supporting video monitoring of the area. Installing cameras both at the picnic grove area and the cottage area is estimated to cost approximately \$22,000. However, the existing video servers at the police station are in need of updating or upgrading to be able to properly accept the additional video feeds. The existing servers accept feeds from cameras within and around the public safety facility and the software system provided when the building was constructed requires frequent updates that sometimes take the system offline.

If the existing servers are re-provisioned with new software, the cost of updating will be around \$15,000. However, if the existing servers are to be outright replaced with new servers, the cost will be considerably higher - around \$48,000. An article has been placed on the ATM warrant that will allow for appropriation of funds based on the chosen scenario. One advantage to the high-cost scenario is that it will replace the servers before they hit "end of life" which is about a year away.

Fiber Optic Line Disruption

Essex's servers are all located in the Town of Danvers datacenter as part of the North Short IT Collaborative. On April 19, 2024, the fiber optic path between Essex and Danvers was disrupted and Essex users temporarily could not access our servers. The system was set up with a failover to Internet in the event of a fiber disruption but the failover did not initially work. Mr. Zubricki contacted Danvers IT personnel and they determined the cause of the problem and noted how it will be avoided if another failover is needed in the future. Town users



computed using the Internet path until the problem with the fiber could be identified and repaired.

Downtown Decorative Lighting Project Update

Since the Board's last meeting, the TA has confirmed that our engineering contractor, Stantec, has officially informed its insurer that the Town may be making a claim against the firm's professional liability policy. The Town did not receive adequate guidance from Stantec with respect to the possible risk of pre-purchasing custom lighting components based on what turned out to be unsuitable site conditions. In Stantec's contract with the Town, Stantec clearly suggested that utility conflicts would not be a problem and did not recommend any further field investigation prior to assisting the Town prepare the order for the non-returnable components. Further, Stantec actually completed a feasibility study concerning this project via a technical assistance grant prior to the Town hiring the firm for the actual design. Nowhere within the Town's involvement with Stantec did the Town ever receive cautionary statements or suggestions for additional field investigatory work. Fortunately, we have learned from Mass DOT that the \$160,000 Shared Streets and Spaces Grant that was awarded to defray a portion of the project will be allowed by DOT to be fully expended on the purchase of the custom lighting components, even though the Town will be storing those components for the time being. The custom lanterns were delivered several weeks ago, and portions of the custom light poles and attachments have also been delivered (all are now in storage and we are waiting for the actual poles to ship). Further, the TA presently working with our lighting installation contractor to review the company's assessment of costs that occurred between project commencement and when work ceased due to utility conflicts.

Another issue for the Board to consider is whether the Board would like to move forward with the demolition of 23 sidewalk sections with the embedment of decorative

ship plaques in the repaired sections. Another possibility would be to have a local mason patch the cuts that were made when our contractor began to prepare for light pole base installation.

Replacement or Repair of Shellfish Department Pickup Truck

At the last meeting, the TA noted that the Shellfish Constable had just received an expensive repair estimate for the Shellfish Department pickup truck involving the replacement of both catalytic converters. Rather than pursue those repairs immediately, the Board asked the TA to check in with the State surplus vehicle program through Senator Tarr's office, since the Town acquired the current truck through that program in 2018. We have learned from the State surplus coordinator that a truck may become available but that the State program no longer provides vehicles to municipalities at no cost. As such, if a truck does become available matching our needs, it would come to the Town at a market rate.

Public Water Supply Well Improvement Project Re-Bid

As the Board may recall, the Town's first attempt at securing a contractor to conduct certain improvement work on the Town's three public water supply wells resulted in bids that were all over the available budget. Our engineering contract has now developed a modified bid package with a smaller scope and is ready to put the project out to bid again. The new bid packages will be available on April 24, 2024, with a pre-bid conference on May 8, 2024. Sub-bids for certain trades will be due on May 20, 2024 and general bids will be due on May 28, 2024. We are also working on an application for Congressionally-Directed Spending (CDS) that, about a year from now, could fund the portion of the work that had to be cut out of the scope (along with perhaps the replacement of some aging water mains in the street).

Centennial Grove Improvement Project Update

Mr. Zubricki met at the Grove

with volunteer Centennial Grove Improvement Project coordinator Dan Mayer on April 17, 2024. Work has resumed on the new pavilion and siding and roofing elements will be completed in the coming weeks and months. We reviewed the best location for the new restroom facility and a foundation plan is being developed based on the dimensions of the building that the Board approved at the last meeting. The TA will work with the Building Inspector to understand the ADA rules around maximum slope between the pavilion and the restroom facility.

While walking the property, Mr. Mayer suggested that a number of mature trees adjacent to the lower parking lot and along the area where the restroom facility will be sited should be taken down. He is willing to conduct this work at no charge to the Town and plans to use the timber for milling into boards for the project. All work will be outside of the wetlands buffer zone. Also, Mr. Mayer suggested that the trees that Scott Energy is planning to plant on Town property in a wooded area after accidental cutting be planted instead at the Grove. He noted that the trees in the wooded area will come back naturally and that the commitment made by Scott Energy would be far more beneficial to residents if exercised at the Grove. Further, Mr. Mayer suggested that the upper Grove parking lot be reduced in size to still allow a full row of head-in parking but much closer to the road, making the remainder of the parking lot green space.

Quarterly Facility Self-Inspection Checklist

Mr. Zubricki completed the subject checklist for Town Hall and asked the Council on Aging Director to take over the completion of the checklist for the Senior Center moving forward. Other departments also fill out checklists for other buildings. The inspections are intended to flag safety problems and make rapid corrections to avoid any injuries. The Safety Committee discusses the inspection forms each quarter.

Town Hall Bell Tower Roof

Another episode of high winds again tore shingles off from the Town Hall bell tower roof. The original contractor for the Town Hall renovation project twice replaced shingles in that location and, after the building warranty expired, another contractor has twice replaced shingles there. Mr. Zubricki is making arrangements to have the shingles replaced again but it seems that the exposure of that roof, on one particular side, may make it difficult to keep the roof in good repair.

LIBRARY NEWS

T. O. H. P. Burnha
Public Library



Snakes of New England event with the Cape Ann Vernal Pond Team. (Courtesy Photo)

Teen Minute to Win-it

Monday, April 29 at 4 p.m. for grades 5-8. Tweens and Teens, enjoy an afternoon of fun, fast paced challenges with your friends. Please register, space is limited.

From Fungi to Foraging

Tuesday, May 7 at 7 p.m. Learn about fungi with special guest Jana Harris. Fungi history, terminology, hunting safety and ethics, growing them in your garden and more. No registration required.

Pet Loss Grief Support

Monday, May 13 at 7 p.m. Join grief support specialist Marla Andrews of Humane Hearts, LLC. If you have experienced the loss of a beloved pet or are anticipating a loss, please join us for a conversation about this topic and find support available to help guide you. No registration required.

Annual Pie Fest Fundraiser

Wednesday May 1 from 12-4 p.m. on the 3rd floor. All are welcome to purchase a slice of pie to enjoy with coffee and tea to help support the future library programming.

Community Book Group

Monday, April 29 at 10 a.m. Come by for a discussion of "Dancing at the Pity Party" by Tyler Feder.

Regional Social Worker

Wednesdays, 9 a.m.-12 p.m. in the first-floor meeting room. Free, private, and confidential, learn about resources, gain strategies and skill to assist in stress reduction and management. No appointment necessary.

CFCE Science Thursdays

Thursdays 9-10 a.m. for ages 2-6 years old. Join Ms. Christine for some STEAM fun, you will listen to stories, then explore science, technology, engineering, art, and math. Space is limited so please register.

ESSEX POLICE NOTES

MONDAY, APRIL 15

No report.

TUESDAY, APRIL 16

No report.

WEDNESDAY, APRIL 17

7:35 a.m. Western Ave., male fall, transported to hospital.
11:15 a.m. Martin St., directed patrol, secured/checked.
3:57 p.m. Martin St., fire alarm, fire false.
7:19 p.m. Grove St., directed patrol, secured/checked.

THURSDAY, APRIL 18

11:52 a.m. Main St., selective enforcement, other.
12:56 p.m. Luffkin Point Rd., male with breathing difficulty, transported to hospital.
4:07 p.m. Grove St., male fall, transported to hospital.
5:19 p.m. John Wise Ave., citizen assist, assisted as needed.

FRIDAY, APRIL 19

12:32 a.m. Martin St., directed patrol, secured/checked.
1:03 a.m. John Wise Ave., directed patrol, secured/checked.
2:34 a.m. Story St., directed patrol, secured/checked.
6:28 a.m. Southern Ave., selective enforcement, no action taken.

SATURDAY, APRIL 20

No report.

SUNDAY, APRIL 21

No report.

Essex Senior Living | April 26

The Essex Council on Aging offers a variety of events and trips for seniors. For further information or to sign up for an event, please call the Essex COA Office at 978-768-7932 or visit the Senior Center at 17 Pickering Street.

Monday Groove (Video), Mondays, 9:30 a.m.: Get your dancing shoes on and join this fun, energetic dance class! Video, no instructor. \$5 donation suggested.

Creative Connections: Mondays, 10 a.m. - 12 noon: Bring your art projects or start a new one at our Open Art time! We have some supplies and would love to see you!

Arts Group: Tuesdays, 1 - 3 p.m.: Are you artsy? Do you love to paint, knit, crochet, or sew? Do you like creating different projects? Join us with your own project or help with making items for the Friends Boutique.

Balance in Motion, Tuesdays, and Fridays, 10 a.m.:

\$5 Donation requested.

Fitness With Gil: Wednesdays, 10 a.m.: Start your day then with Gil and focus on strength, stamina, and stretching... energize yourself and leave feeling good! \$5 Donation suggested.

Technology Assistance, Wednesdays 1-3 p.m.: Do you have questions about your computer, tablet, phone, or other technological challenges? Drop in and

see Curt or Bill for help.

Games with Gil at the Senior Center: Wednesdays 1 - 3 p.m.: ALL AGES WELCOME, come play BOARD games or Scrabble, Boggle, Cribbage, Backgammon, join us or bring a friend and come play ANYTIME!

Walking Club: Want to get some exercise but concerned about winter road conditions? Enjoy the Gordon College Bennett Center

indoor walking track for FREE! Mondays, Wednesdays & Fridays, 9:30- 11:30 a.m. Please register by calling Hamilton-Wenham Recreation 978-468-2178. Transportation is available from CATA.

Grab and Go Meals, Mondays & Thursdays, 12 Noon (must be picked up by 12:30 p.m.): Monday meals provided by Open Door, Thursday meals provided by Senior Care. Please register two business days in advance - 978-768-7932.

CAPE ANN INSURANCE AGENCY
A division of Salem Five Insurance Services

Home • Renters • Auto
Business • Life Insurance
Workers' Compensation

SalemFive
MAKE YOUR MOVE.

978.283.7757 • 23 Dale Ave., Gloucester, MA

Insurance products offered through Salem Five Insurance Services, LLC. Insurance products are not guaranteed. All rates are subject to change. Coverage is subject to underwriting and may not be available in all areas.

jeffreys creek
land contractors inc.

Builders of Quality Crafted Outdoor Spaces

180 SOUTHERN AVENUE ESSEX, MA

978 ~ 768 ~ 3359

www.jeffreyscreek.com



Students from the Magic Years Cooperative Nursery School in Manchester, rest after their Earth Day Walk around town.

(Courtesy Photo)

Story of the First Parish Church Clock



First Parish Church
Congregational, Manchester-by-the-Sea • MA

The clock in the steeple and the Clock Winders who keep the bells ringing and the clock turning -- from the 2023 First Parish Church annual report -- It's been another quiet year for the clock winders. Nothing particularly unusual occurred, which is always good news. There were no breakdowns, no steeple taken down, and no unusual weather affecting the clock. The bell still rings on the hour and the clock has been as accurate as possible. A volunteer team from First Parish climbs the 62 steps to wind the clock weekly.

For the first 108 years town employees wound the clock; First Parish volunteers assumed the duty 33 years ago. Our original clock 'minder' was Dave Gaunt, who was

very particular to maintain the time to the minute. He lived on Chapel Lane and could hear the bells and see the clock clearly. He was joined by our first team Fred Nickless, Carl Nickerson, Henry Lapham, and George Nickless. Others who have shared the task in the past include Bob Sibley, Larry Kirby, Bill Greene, Marc Bliss, Charlie Hatch, Dewey Klebart, Vin Terrill Jr, Mark Decker, Brian Duda, and Mark Potter.

We would like to give a very special thank you to Sheila Carrassi, our first female clock winder, who after 10 years of faithful service has announced her retirement. We are very grateful for her dedication to this challenging job. The current team of clock winder are Henry Lapham 33 years, George

Nickless 25 years, Bruce Warren 12 years, Jeff Parker 8 years, Betsy Nickless 4 years, Dana Powers 2 years, and Elden Hubisz 1 year.

As always, we owe a special thanks to Henry Lapham who lends his expertise when needed. With the help of Jeff Parker, Henry lightly oils and maintains the workings. The clock mechanisms are oiled on a regular basis along with the pendulum, needing to be shortened or lengthened periodically to maintain the correct time. Usually, at least once a winter, wet snow or ice on the clock hands will cause it to stop. A little warm sunshine and a gentle push to restart the pendulum sets us good to go.

Comments this year from a couple of winders:

We consider this an exceptional year because our Church Office received only ONE complaint from a resident who was new to town and implored us to "turn it off" at night. Sorry, no can do.

A bit of humor: "Once again the clock winders performed their job in a very timely manner, while doing a strikingly good job."

A bit of trivia: We are celebrating the 141st year of hosting the town clock in our steeple.

The clock was installed in 1882 and purchased from the Town on 5/9/1990 (for one dollar and other valuable and considerate goods.)



Jarrett Croft controls the ball during a match against the Woburn Tanners on the 16th. The Hornets won the game 14-4. They are 4-1 for the season. (Photo Courtesy FB MERSD)

ME Boys Lax Finds Its Focus at Season's Start

Jason Brisbois

While a 4-1 start to the season is nothing to sneeze at, a 9-7 loss to Ipswich on April 5 provided the Manchester Essex boys lacrosse team with its most important lesson of the spring season so far.

"Our loss to Ipswich [in] game two of the season at home was a big learning moment for us," explains ME boys lacrosse coach Jon Siderewicz. "We led for three quarters and couldn't pull it out in the end. The message was to take one play, one whistle, and one quarter at a time, not letting the end result affect how we prepare or play. There has been growth just from this loss alone"

That growth seems to be evident in just how well the Hornets have fared since that game. Manchester Essex pulled out a close, 9-8 win over Winthrop on April 9, and then went on to pummel Hamilton-Wenham on April 12 (an 18-2 win) and Woburn on April 16 (a 14-4 score).

"We've had a good start to the season, however the next part of the season will be an uphill battle especially once we get into CAL play which is the majority of our schedule," says Siderewicz.

That schedule includes a home game against Lyn-

nfield on April 23, away against Triton on April 26 and back home to host Amesbury to close out the month (April 30, 4 p.m.). Further down the road, the Hornets have Weston and Pentucket in early May, with the road rematch against Ipswich on May 9 (4:30 p.m.).

"This week we host Lynnfield and travel to Triton," explains Siderewicz. "Both pretty big games for us considering both are CAL contests, so we need to be prepared and have a good, solid couple days of focus at practice. Most importantly, we want to focus on us and what we have done wrong in the past, and correct our mistakes to be better at what we are doing on the field on both sides of the ball."

To get to this point -- and to keep it going in those key contests down the road -- the Hornets have leaned on their captains to set the tone. "Our current record of 4-1 and the success we have had stems from our leaders on the team," says Siderewicz. "Captains Mac Edgerton, Quinn Brady and Henry Thurlow have done a great job leading our guys each day of the spring thus far, echoing the message just to take things one day at a time."

Also, of note has been the play of sophomore goalie Connor Dickson, who has looked great in net so far.

save the date for Cornerstone's
VACATION BIBLE SCHOOL
MYSTERY ISLAND
Tracking Down the One True God
July 29th - August 1st
6 - 8 p.m
REGISTRATION STARTS IN MAY
GO ONLINE TO LEARN MORE!
www.cornerstonenorthshore.org

...(Continued from page 6)

That will be a great game not to miss."

Some familiar names have been crucial to Manchester Essex's efforts during the first four contests of the season. All-everything goaltender Brigid Carovillano has been as good as ever, Charlotte Crocker has anchored the defense, Abby Kent has been the focal point in the midfield and Sylvie McCavanagh has led the offense to double-digit scoring in three of four games. Captains O'Neil and Chafe have served as the catalysts for this group.

"Our captains -- O'Neil and Chafe -- are super role models for hard work, intensity and grit," says Gorton. "I love how they have led the team so far and I am excited to see what this next phase looks like."

Maggie Light has exhibited signs that she is ready to take the next step as a varsity player in 2024.

"I think the most surprising player right now is Maggie Light," says Gorton. "She has shown up every day working hard, staying positive, running fast and doing exactly what we ask her to do. She

is not a standout in points earned, but I think she has embodied what it means to be a Hornet lacrosse player." Now that we are past April vacation and have officially moved on to what Gorton describes as the second phase of the season, the challenges don't get any easier for the Hornets. This week brought a key road game against Hamilton-Wenham on April 24, sandwiched by games against Lynnfield (April 23) and Triton (April 26). In the weeks ahead, major challenges loom with a road game against Pentucket on May 7 (7:30 p.m.) and the highly-anticipated rematch with Ipswich on May 9 at home (7:30 p.m.).

"This Wednesday night we play Hamilton-Wenham for the first time this season," says Gorton. "They have some really good players and are well coached. I am looking forward to heading over to their grass field and seeing what we can put together."

BUCKLEY TREE CARE
pruning • vistas • tree removal • land clearing
hazard mitigation • cabling • stump grinding
(978) 704-1441 • BUCKLEYTREECARE.COM

EVERYTHING YOU NEED FOR THE SEASON!

ACE
The helpful place.

Scotts® Nature Scapes® Color Enhanced Mulch, 2 Cu. Ft.
SALE \$99.99
ACE REWARDS EXCLUSIVE*

Scotts® 4 Step Annual Program
SALE \$10
INSTANTLY SAVE \$10
Scotts® Turf Builder® Grass Seed, Fertilizer & Soil Improver

Miracle-Gro® Raised Bed Soil or Whitney Farms® Organic Raised Bed Mix, 1.5 Cu. Ft.
SALE \$20.00

Miracle-Gro® Potting Mix, 2 Cu. Ft.
SALE \$24.00

SPRING EVENT
APRIL 17-30

MANCHESTER HARDWARE
35 BEACH ST., MANCHESTER
(978) 526-4000

Kitchen & Bath Renovations
Beautiful Cabinets & Quartz, Granite, Porcelain Countertops | Luxury Vinyl & Tile Floors | Grout-Free Shower Walls | Huge Selection of Tiles

Cape Ann Customers! Free 3D Computer Design of your NEW bath or kitchen. We install with a large team of in-house workers. Call to schedule a FREE in-home estimate!

Custom Bath Of Nashua.com
Our New Kitchen showroom is open 7 days a week, 11am-5pm. Visit Kitchens-N-More, 175 Amherst St., Nashua. (Exit 7E off Route 3)
978-621-3501

Q&A: Mass. Sen. Bruce Tarr

We're talking MBTA Zoning Law, \$4.1 Housing Bond Bill, and more

The lack of housing is a major crisis in Massachusetts. It's driving people to leave the state, and that is a dogged challenge for organizations seeking to keep and attract employees. It's also a problem for seniors who want to downsize (where would they go?) and young people seeking affordable starter homes. Communities served by the MBTA commuter rail line have been required by the state to create "by right" multifamily housing, and in January Gov. Maura Healey introduced a \$4.1 billion housing bond bill to produce housing. Cricket Editor Erika Brown sat down with Mass. Senate Minority Leader Bruce Tarr to talk about it ...



Massachusetts Senate Minority Leader Bruce Tarr.

Courtesy photo

At the current rate, this is unsustainable. But even before we had that influx of migrant families, we had a housing crisis. Depending on the study, the last number I've seen is that we're about 110,000 units between where we need to be and where we are. The highest number I've seen is 300,000 units. Whichever number you pick, Massachusetts needs housing. We need to be working with our cities and towns and help facilitate the development of housing.

What's important to keep in mind about this MBTA zoning law is that it requires multifamily zoning "by right," which means not requiring a discretionary permit. However, it does not eliminate all local controls. In fact, site plan review is allowed under the law and under the guidance and so there are tools available to maintain the character of the community and the community needs to be able to use those tools.

I would say that I have been concerned about the "one size fits all" nature of the MBTA zoning law, and I offered an amendment to it in July 2022 to require the Mass. Dept. of Housing and Community Development—which is what it was known as back then—to have an appeals process allowing communities to make the case that either their drinking water or wastewater or transportation infrastructure made it impossible for them to comply with the law and allow them some relief.

Erika Brown
Let's start with the 2021 MBTA Communities Zoning Law. Manchester, Rockport, Gloucester and, to a lesser extent Essex, are among the 177 communities impacted by the bill.

Mass. Sen. Bruce Tarr
Well, the MBTA zoning requirement is actually an update to a section of the Massachusetts Chapter 40A (Zoning Act). It came in as a three-paragraph amendment added to a massive economic development bill that authorized \$626 million in spending. It's important to put that into context, that this was really a very small component of a much larger bill.

The original legislative language had three components. First, the zoning district had to be within a half a mile of a train station. Second, it had to allow for a reasonable size area to be rezoned, and, finally, the district would have a density greater than 15 units per acre. And there was also a corollary, an asterisk: there couldn't be any restrictions on age. The notion was the district had to be family friendly.

EB: Manchester will bring MBTA-compliant zoning to voters in November. Opposition groups warn that compliance would sap local resources and infrastructure, destroy downtown charm, and bring more than a million "low wage workers" to MA. Some even brought up (immigrant) migrants, saying they would exacerbate the issue.

Sen. Tarr: Well, we are having an influx of migrant families, and they are already overburdening the shelter system in the Commonwealth, and they are impacting the state budget this year by approximately \$1 billion.

EB: The Task Force is looking to put more than 100 units in the Limited Commercial District, right on top of Saw Mill Brook which environmentalists have said must be protected.

Sen. Tarr: I'm always concerned about jeopardizing the environment. As much as housing production is a priority, we can't jeopardize our drinking water in order to meet that priority. And here's a fundamental premise: you can't have housing unless you can support that housing with drinking water and wastewater treatment and transportation.

Imputed BPS estimates and reported numbers of permitted units have major discrepancies.

BPS estimates and municipal report of total units permitted 2018-22 in a selected case study municipality

Survey Year	Units Reported by Municipality to Census Bureau	Official BPS Estimate
2018	19	19
2019	1,780	1,780
2020	1,199	0
2021	1,667	0
2022	898	0

Source: U.S. Census Building Permit Survey

Recent housing production growth leaves Massachusetts far below historic levels.

New housing units permitted annually in Massachusetts, 1960-present. Census Building Permit Survey.

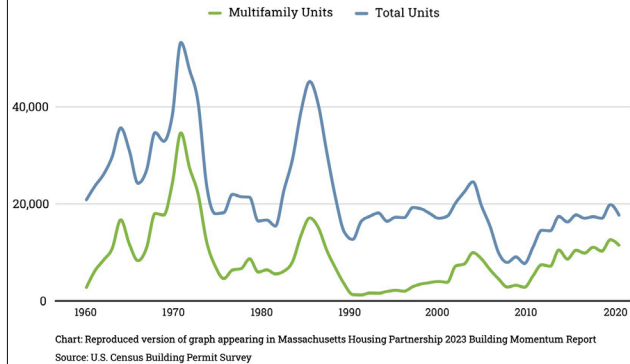


Chart: Reproduced version of graph appearing in Massachusetts Housing Partnership 2023 Building Momentum Report. Source: U.S. Census Building Permit Survey

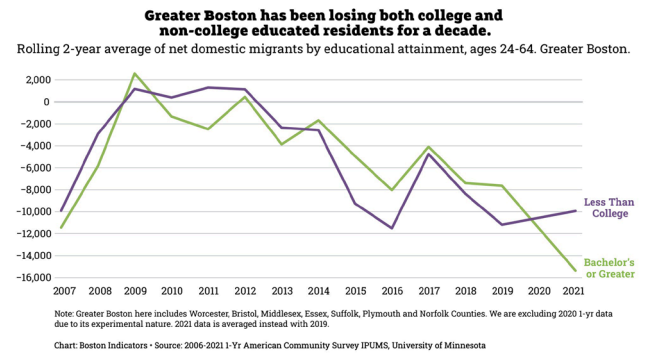
Let's not eliminate the obligation to zone for housing but give some flexibility to comply with that obligation in a different way. One of the criticisms that I've heard is about the density issue and about trying to have the 15 units per acre. We clearly could accommodate that goal in a different way, for example if we had a zoning district that allowed smaller single-family lots and to be able to spread the housing out a little bit.

EB: There's a lawsuit by a Rockport man who holds that the MBTA Zoning violates "Home Rule," that promises towns independence from the long arm of the state. Do you think that that has merit?

Sen. Tarr: Ultimately, that question needs to be decided by the courts and anything the rest of us can offer is merely an opinion. But I would suggest that there is a long history of state legislative oversight over zon-

ing. Municipal zoning itself derives from Chapter 40A of the Massachusetts General Laws. Chapter 40B, which is often controversial, has been upheld as being constitutional and consistent with the Home Rule Amendment. Thus, in my opinion, it is pretty clear that the state has the authority to regulate zoning. How it chooses to do so is a matter of public policy that is open to debate.

EB: How do you think the communities of Cape Ann are doing? I know Essex isn't



impacted by the MBTA Zoning. But how are Gloucester, Rockport or Manchester doing?

Sen. Tarr: Well, I do think Gloucester has done a good job of holding public meetings and engaging in public engagement. Rockport has followed a similar path. In Manchester, I know there is the MBTA Zoning Task Force and they've begun public hearings and discussions. And I think that's going to have to be the approach.

EB: Let's switch to February's announcement from the governor's office of a \$4.1 billion housing bond bill which reserves \$2.1 billion for public housing upgrades that would be powerful for Essex and Manchester. Manchester has a plan to renovate and expand its three subsidized housing properties that has been dying on the vine.

Sen. Tarr: It's my understanding that the Housing Bond Bill that Gov. Healy has proposed is the largest housing bond bill ever proposed in the history of the Commonwealth. Generally, these bills happen every five to 10 years. This is the largest that we've seen.

I have had conversations with local housing authorities and it's clear that one of our priorities must be to not allow Housing Authority properties—public housing—to continue to fall into disrepair. Especially if we're thinking about creating new units, it's important that we don't lose the units that we have. One of my goals for this housing bond bill is to make sure that there is a robust infusion of capital into our existing units so that they can be improved, modernized and maintained. That's one priority.

Number two, I do think we need to explore being able to create more units for our housing authorities. One of the difficulties that we face now is that a lot of our older population is over housed. They may live in a 3- or 4-bedroom Victorian that's been in the family for a long time that they can't afford to leave. They can't find a place to go, but a young family could make good use of that home. We just have to create options for folks that they can afford and that are accessible.

A third priority is to make sure that we can help folks continue to realize the American Dream with a starter

home. That answer may be giving communities more tools to enact zoning with smaller single-family lots, or developing more first-time homebuyer programs so that they can be able to make a down payment.

EB: Another huge item in the housing bond bill is allowing ADU (accessory dwelling units) by right statewide, regardless of local zoning. That actually would provide relief to both first-time homebuyers and seniors.

Sen. Tarr: I consistently over the last several years filed ADU proposals, either in the form of standalone bills or as amendments. I do think it's a productive path for us to follow. Obviously, there might be some discussion about the details, but I think accessory dwelling units are an important part of trying to meet the demand that we face. They could be a particularly useful option for the seniors we discussed earlier. But also, we've been hearing a lot from the disability community about ADUs and how they (ADUs) can respond to the needs of that population. So yes, ADUs are an important tool.

EB: In Manchester, ADUs require a special permit process. But, you can't apply for a special permit unless you have a double lot which means legal ADUs are rare.

Sen. Tarr: Again, of all the things that we can think about, ADUs are one of the lower-impact options. I think that's really the most fundamental element of this conversation is that we need housing in our Commonwealth. And the need isn't restricted to one particular area of the Commonwealth, one particular municipality. We need it. We are losing folks. The paradigm used to be we would talk about creating jobs. But now it has to include the second component: having people to fill those jobs.

EB: Well thank you, Sen. Tarr. This has been very interesting.

Sen. Tarr: Thank you.

This transcript has been edited for space in the printed newspaper. For the full transcript of Erika's conversation with Senator Tarr, go to thecricket.com.

WATER REPAIR

SIDING

PORCHES

WINDOWS

ROOFING

DECKS

CARPENTRY

Glenn Battistelli

BATTISTELLI CONSTRUCTION

(617) 962-1235

ABERDEEN HOME CARE, INC.

North Shore's Top Choice for Private Home Care.

Are you seeking purpose and fulfillment in your work?

We're hiring caregivers, CNAs, CHHAs, nursing students, and retired health care workers.

Apply Today

978-500-5161 | Voted a Top Place to Work by The Boston Globe

AberdeenAtHome.com

Puzzle

THEME: FICTIONAL MOTHERS

ACROSS

1. Bars
6. Escape or flee
9. Green gemstone or Heather Graham in "The Hangover"
13. Turning point
14. 34th U.S. Pres
15. Actress Sophia ___
16. Each and all
17. Lake, in France
18. Roof overhangs
19. *Lovable mother of seven in "Harry Potter" Mrs. ___
21. *Mother in "The Terminator," Sarah ___
23. Not safe, in baseball
24. "Hold on!"
25. Uno ___, in Mexico
28. Iranian monarch
30. Be a go-between
35. Kind of cuckoos
37. Passing mention
39. Dwelled
40. TV show "___ 911!"
41. **"Beloved" mother
43. Like a tennis skirt
44. Scottish kinship groups
46. Spare in car
47. Email folder
48. Vertical dimension
50. Turf alternative
52. Morse Code dash
53. Hippocratic ___
55. Three, to Caesar
57. *Margaret White's telekinetic daughter
60. *Elizabeth Zott of "___ in Chemistry"
64. Vernacular
65. R&R hot spot
67. Capital of Vietnam
68. Yours is as good as mine?
69. Tennis retry
70. Cause anxiety (2 words)
71. Bookie's quote
72. Well-kept secret, for some
73. Teatime treat

DOWN

CROSSWORD														
1	2	3	4	5		6	7	8		9	10	11	12	
13						14				15				
16						17				18				
19						20			21	22				
			23				24							
25	26	27		28		29			30		31	32	33	34
35			36			37			38		39			
40						41			42		43			
44				45		46					47			
48						49			50		51		52	
						53		54			55		56	
	57	58	59						60			61	62	63
64						65	66			67				
68						69				70				
71						72				73				



SWITCH & GET
\$25

Off First Month of New Service!
USE PROMO CODE: **GZ590**

Consumer Cellular

CALL CONSUMER CELLULAR **888-804-0913**

© 2023 Consumer Cellular Inc. For promo details please call 888-804-0913

© StatePoint Media

1. Do like volcano
2. Honey home
3. Iris holder
4. Human trunk
5. iPad "pen"
6. *Matriarch, ___ Munster of "The Munsters"
7. *Nadezhda of "The Americans," ___ Elizabeth Jennings, acr.
8. Muhammad's birthplace
9. Melissa Rivers' mom
10. Australian slang for afternoon
11. Widely hunted ruminant
12. Follow ems
15. A particular legume
20. Not pathos
22. Second O in EVOO
24. Kinda white
25. *Mrs. ___, a.k.a. Marmee
26. Anoint
27. Red Sea peninsula
29. Drive a getaway car, e.g.
31. Goals
32. Like a Harvard building?

Sudoku

SUDOKU

Call today and receive a
FREE SHOWER PACKAGE
PLUS \$1600 OFF

SAFE STEP WALK-IN TUB **1-855-576-5653**

With purchase of a new Safe Step Walk-In Tub. Not applicable with any previous walk-in tub purchase. Offer available while supplies last. No cash value. Must present offer at time of purchase. CSLB 1082165 NSCB 0082999 0083445

	3	1						2
8			6		9			
7				2		5		
	4				3	9		
3	7						2	6
		5	2				8	
		3		4				7
			7		8			9
5						4	3	

© StatePoint Media

Fill in the blank squares in the grid, making sure that every row, column and 3-by-3 box includes all digits 1 through 9.

Solutions on Page 11

33. Plant-based laxative
34. * ___ Bunker, mom to Gloria in "All in the Family"
36. Dance partner
38. Drive-___, for short
42. Like a haunted house
45. Daisy dukes, e.g.
49. ___ chi
51. Casts a line
54. Popular electric car
56. Newton's first name
57. Foul substance
58. Matured
59. Bob of "The Joy of Painting" fame
60. Better than never?
61. On top of
62. "High" time
63. Cosine's counterpart
64. In the past
66. **"Married... with Children" mom

Religious Notes

Cornerstone Church

We gather for worship each Sunday at 10 a.m. and welcome you to join us for a time of studying the scriptures and praising the Lord. Other ministry updates and details can be found on our website, www.CornerstoneNorthShore.org. If you have any special needs or concerns, please let us know! We're here to serve!

Visitation Parish - Mass Sched-

ule

The Visitation Parish Mass Schedule:

Sacred Heart Church - Saturday Vigil Mass - Virtual Mass - on our YouTube as well as www.mecatholic.org

Sunday Mass - 8:30 a.m.

St. John the Baptist Church - Saturday Vigil Mass - 5 p.m.

Sunday Mass - 10 a.m.

Please go to our website: www.mecatholic.org for Sacramental Information as well as Parish Registration if you are new to town or looking to join a Catholic Church.

The Assumption of the Virgin Mary Greek Orthodox Church

8 Lafayette Road, Ipswich Mass.

Church services, with Father Christopher Kolentas, are held each Sunday.

Sunday's Divine Liturgy, with Father Christopher, starts at 9:30 a.m. followed by a weekly sermon. All

are welcome to attend.

First Parish Church

First Parish Church Manchester by the Sea - a lovely place to start your week, join us for a moving message, beautiful music and community in the center of town -

Sunday worship at First Parish 10 a.m. worship leader, Rev. Katherine Schofield, music led by Dr. Herman Weiss, and the First Parish Choir

Monday Friends of the COA Senior Drop in 10 a.m.-12 noon.

Tuesday Online Bible Study, Via Zoom 4 p.m., join in with computer,

smart device or dial in on a phone from wherever you are -- email office.fpchurch@gmail.com or call 978-526-7661 for the link

Wednesday Choir rehearsal 7:30 p.m.

Thursday Seaside Parish Knitters 1-3 p.m., all knitters welcome to drop in

St. John's Church Worship:

Every Sunday we hold services at 8 a.m. and 10 a.m. Child care is available during the 10 a.m. service.

Holy Eucharist at 8 a.m. & 10 a.m.

...(Continued on page 11)

Gibson | **Sotheby's**
INTERNATIONAL REALTY

Open the door to what's next.
DISCOVER HOMES ON THE NORTH SHORE



MANCHESTER-BY-THE-SEA
146 Bridge Street
5 Beds | 4F 2H Baths | 8,808 Sq. Ft.
Offered at \$3,865,000
McDermott Group | 978.857.0343



TOPSFIELD
51 Asbury Street
6 Beds | 7.5 Baths | 8,057 Sq. Ft.
Offered at \$3,500,000
Wendy Coke | 617.694.1310



SCAN TO VIEW MORE PROPERTIES



NEWBURYPORT
347 High Street
5 Beds | 5.5 Baths | 5,567 Sq. Ft.
Offered at \$2,349,900
Kevin Fruh | 978.500.7409



ROCKPORT
10 Briarstone Road
Waterfront/Land
Offered at \$1,795,000
Jill Michaud | 978.766.8064



SWAMPSCOTT
48 Bellevue Road
5 Beds | 3.5 Baths | 3,760 Sq. Ft.
Offered at \$1,650,000
Kathleen Murphy | 603.498.6817



MANCHESTER-BY-THE-SEA
3 Brook Street, Unit A
4 Beds | 2.5 Baths | 3,554 Sq. Ft.
Offered at \$1,350,000
Kristin Francoeur | 978.270.7929



SALEM
18 Chestnut Street
Two Family House
Price Available Upon Request
Michael Selbst | 617.504.9159



SALEM
58 Derby Street
3 Beds | 2.5 Baths
Price Available Upon Request
Michael Selbst | 617.504.9159

GIBSONSOOTHEBYSREALTY.COM
Each office is independently owned and operated. Sotheby's International Realty Affiliates, LLC fully supports the principles of the Fair Housing Act and the Equal Opportunity Act. All offerings are subject to errors, omissions, changes including price or withdrawal without notice.

Pet Insurance: Navigating a Slew of (Important) Questions



PETS AND PEOPLE

By Lawrence Lamb, DVM

Every year we see an increasing number of patients with pet health insurance at the Manchester Animal Hospital.

The common question is, "Is it worth it?"

Pet insurance is becoming an increasingly popular way to plan for emergency veterinary medical bills. Almost unheard of just a few years ago, pet insurance is now a \$1 billion per year industry. In the following column, I will delineate the different forms of Pet Life Insurance and commit to advising that Pet Health Insurance is a wise decision.

In 1982, there was only one dog and cat insurance company in America. Today, there are more than 80 different companies offering endless pet insurance products. As I mentioned above, pet insurance is already a billion-dollar industry, and experts expect it to grow 15% per year. Why? Well, consumer awareness is growing, making pet insurance more popular and more affordable - and more complicated. Like any insurance product, there are endless varieties of plans, companies, and features. It can seem overwhelming, but it is important to understand the basic structure of pet insurance plans and the options available before you make a decision.

There are countless different types of plans for you to choose from, but they generally fall into two categories: accident-only plans and comprehensive plans.

Accident only plans are the most basic types of pet insurance plans, and they are intended to cover injuries caused by (as the name suggests) an accident. For example, if your dog is hit by a car or breaks her leg, you are covered. But these plans do not cover illnesses or chronic conditions. I do not recommend these plans.

I recommend Comprehensive Pet Health Insurance plans. They come in many varieties and can be endlessly customized. They generally cover accidental injury, illnesses and chronic conditions. Comprehensive plans are the most popular by far and more than 80%

of all plans sold in the US are comprehensive plans.

Pet insurance plans, like all insurance plans, can have a wide range of confusing terms and conditions. It's important that you understand the terms of your plan so that there will be no surprises when it comes time to make a claim. This is especially important because most pet insurance plans are reimbursement plans. This means that you still need to come up with the money to pay your vet bills in advance, and then submit your claim to the insurance company for reimbursement. And, if they decline your claim, you are still responsible for the vet bills.

It's also important to understand how the reimbursement amount for your plan is calculated. Some plans calculate your reimbursement as a flat percentage of your costs after your deductibles. Other plans use the "usual and customary costs" for your area to determine the payout amount, regardless of how much you actually paid. Plans typically have an annual cap to the amount of claims they will pay out per pet. Some providers let you choose the amount of your maximum (for example, \$5,000, \$10,000 or \$15,000), but more coverage comes at a cost and the higher the maximum annual cap is, the higher your premiums will be.

You will also—as is the case with all human health insurance plans—have different choices for your deductible and premiums. As with your own insurance, typically the lower your deductible (the amount you have to pay out of pocket), the higher your premiums. Providers typically offer both annual and monthly payment plans, and they sometimes even offer discounted rates when you pay the full year's premium in advance. The premiums you will pay for pet insurance will depend on several factors, including the breed, age and health of your dog, and the type of plan you choose.

Now, keep in mind, depending on your dog's breed, you may pay a premium for coverage. Why? Well, this is because some breeds are more prone to certain health

conditions. Golden Retrievers and other large breeds are prone to joint problems like hip dysplasia and arthritis. Hounds and bulldogs can be plagued by eye and ear problems due to their floppy skin. Expect to pay more for coverage for pure-breeds, or face exclusions for certain breed-specific conditions.

Another factor to keep in mind when thinking about pet insurance is the age of your pet. For instance, the older your dog is, the higher your premiums are likely to be. Why? Well, older dogs are more likely to experience health issues, and more likely to have already had some past health problems. Expect to pay more for older dogs.

So, what does pet insurance typically cost? Plans can be as low as \$10 per month and has high as \$100 per month or more. It's important to understand the terms of your plan, and shop around for the best coverage and rate. In my experience, the average cost of pet insurance for a dog is \$45 per month, but it can vary widely from dog to dog.

Once you know what type of coverage you want, you'll have many decisions to make that can influence your overall cost and coverage. As I suggested above, how high of a deductible are you willing to pay is really where you'll start when deciding on insurance that's right for you and your pet. The less you have the pay out of pocket, the higher your premiums will be. Other questions to address include what percentage of expenses do you want covered after the deductible. After all, a higher reimbursement rate means higher premiums.

Then, there is the issue of what your annual coverage maximum will be. Similarly to the dynamic that kicks in with deductibles, it's a give-and-take equation. The higher the maximum, the more you'll pay in annual premiums. Be realistic about the amount of coverage you need—there's no reason to buy more insurance than you need.

Be sure you completely

understand the terms of your contract before you commit: What illnesses, injuries and treatments are covered? Are there any exclusions based on pre-existing conditions or your dog's breed? Be sure to be honest on your application to avoid problems at claim time. I recommend researching the plans available online.

It is important to have the following questions answered: Do you have the choice of vets, or do you need to work with certain approved providers? How is the amount of your reimbursement calculated? Is it a flat percentage, or based on "usual and customary" rates? How are those "usual and customary" rates determined? Also be sure to review the basic contract terms. Learn how long it's in effect, how and why the contract may be terminated, if there are any cancellation fees, and when and how the provider can change premiums, fees and terms.

In the end, yes, I strongly recommend pet health insurance to my patients. Of course, the plans that cover accident and illness are the most important. We call this catastrophic insurance, as most pet owners want to be covered for the major problems that provide the greatest out of pocket expense. Those that include vaccines and routine care may not be worth the additional expense. But if you're interested in expanded coverage, it can be the difference between peace of mind and worrying that the next health event in your pet's life will be "the one" that kicks you into a bigger expense than you expect.



Dr. Lamb is the Veterinarian at the Manchester Animal Hospital.

Solution to puzzles on page 10

S	H	U	T	S	L	A	M	J	A	D	E
P	I	V	O	T	I	K	E	L	O	R	E
E	V	E	R	Y	L	A	C	E	A	V	E
W	E	A	S	L	E	Y	C	O	N	N	O
		O	U	T		W	A	I	T		
M	A	S	S	H	A	H	L	I	A	I	S
A	N	I	S	O	B	I	T	L	I	V	E
R	E	N	O	S	E	T	H	E	M	I	N
C	L	A	N	S	T	I	R	E	S	E	N
H	E	I	G	H	T	S	U	R	F	D	A
			O	A	T	H	I	I			
	C	A	R	R	I	E	L	E	S	S	O
A	R	G	O	T	S	P	A	H	A	N	O
G	U	E	S	S	L	E	T	E	A	T	O
O	D	D	S	A	G	E	S	C	O	N	E

4	3	1	8	5	7	6	9	2
8	5	2	6	1	9	7	4	3
7	6	9	3	2	4	5	1	8
2	4	6	1	8	3	9	7	5
3	7	8	4	9	5	1	2	6
1	9	5	2	7	6	3	8	4
9	2	3	5	4	1	8	6	7
6	1	4	7	3	8	2	5	9
5	8	7	9	6	2	4	3	1

... (Continued from page 10)

Quaker Meeting

Quakers of the North Shore worship every Sunday from 10-11 a.m. at the Glen Urquhart School: 74 Hart Street, Beverly Farms, Mass. It is an unprogrammed Quaker Meeting. There is no Pastor (or leader) save the spirit of God in and among us. Our worship is primarily silent. When a worshiper is moved, it may include a brief, spoken ministry offered in a 'spirit of worship.' Friends gather together quietly, awaiting the experience of God's presence. People in our community hail from the traditional tribal lands of the Pawtucket and Massachusetts now called Manchester, Gloucester, Beverly, Ipswich, Rockport, Salem, Lynn and Marblehead. Whether you have worshiped in other Quaker (Friends) Meetings or not, we welcome you to join us. If you are new to Quakers, someone will be happy to talk with you and answer any questions you may have. Send an email to: northshorequaker@gmail.com. First Day School, our Children's Program, consists of forest walks near the Glen Urquhart School led by Jessica Kagle from the Kestrel Foundation. Blessings To You

LEGAL NOTICE



Town of Manchester-by-the-Sea ZONING BOARD OF APPEALS
Town Hall, 10 Central Street,
Manchester-by-the-Sea, MA 01944-1399

NOTICE OF PUBLIC HEARING

The Zoning Board of Appeals of the Town of Manchester-by-the-Sea will hold a Public Hearing on Wednesday, May 15, 2024, at 7:00 p.m.

Location: This is a Hybrid meeting. ZBA Board will meet in Room 5, Town Hall. Applicants, Presenters, and Public are welcome to join the Board in Room 5 or on Zoom.

Application of James Gaddis, 35 School Street for a Special Permit, under Sections 5.4 and 12.5 for setbacks and Variances under Sections 5.4 and 12.3.3 for setbacks and coverage under the Zoning By-Law to demolish an existing 1 1/2 story, single family residence with detached garage/shed and to construct a 2-story, 2-family structure on a lot with less than the required lot area at 35 School Street, Assessor's Map 51, Lot 5, in District D-1 filed with Town Clerk on March 18, 2024.

Application of Seaside Legal Solutions, P.C. for a Special Permit, under Sections 5.4 and 12.5 and a Variance, under Sections 5.4 of the Zoning By-Law to convert an existing single-family dwelling into a two-family dwelling by constructing an addition of a second residential unit that will be connected to the existing structure via a single-story corridor at 90 School Street, Assessor's Map 41, Lot 87, in Districts D2 and B filed with Town Clerk on April 18, 2024.

Application of Jill M. Rynkowski Doyle and Timothy P. Doyle for a Special Permit under Sections 5.4 and 12.5 for setbacks and Variances under Sections 5.4 and 12.3.3 for setbacks and coverage under the Zoning By-Law for demolition of a two-family structure and construction of a one-family structure located at 9 Bennett Street, Assessor's Map 28, Lot 10, in District A filed with Town Clerk on April 22, 2024.

Sarah Mellish, Chair, Zoning Board of Appeals

Posted to MNPA website: <http://masspublicnotices.org>

April 26, 2024 MC
May 3, 2024

LEGAL NOTICE

Commonwealth of Massachusetts
The Trial Court
Probate and Family Court
Essex Division
36 Federal Street
Salem, MA 01970

CITATION ON PETITION FOR FORMAL ADJUDICATION

Docket No. ES24P1120EA

Estate of Lester G Strangman.

Date of Death: 04/06/2019

To all interested persons:

A Petition for Late and Limited Formal Testacy and/or Appointment has been filed by Annette B Gauthier of Gloucester, MA requesting that the Court enter a formal Decree and Order and for such other relief as requested in the Petition.

The Petitioner requests that: Annette B Gauthier of Gloucester, MA be appointed as Personal Representative(s) of said estate to serve without surety on the bond in an unsupervised administration.

IMPORTANT NOTICE

You have the right to obtain a copy of the Petition from the Petitioner or at the Court. You have a right to object to this proceeding. To do so, you or your attorney must file a written appearance and objection at this Court before: 10:00 a.m. on the return day of 05/21/2024.

This is NOT a hearing date, but a deadline by which you must file a written appearance and objection if you object to this proceeding. If you fail to file a timely written appearance and objection followed by an affidavit of objections within thirty (30) days of the return day, action may be taken without further notice to you.

UNSUPERVISED ADMINISTRATION UNDER THE MASSACHUSETTS UNIFORM PROBATE CODE (MUPC)

A Personal Representative appointed under the MUPC in an unsupervised administration is not required to file an inventory or annual accounts with the Court. Persons interested in the estate are entitled to notice regarding the administration directly from the Personal Representative and may petition the Court in any matter relating to the estate, including the distribution of assets and expenses of administration.

WITNESS, Hon. Frances M. Giordano, First Justice of this Court.

April 17, 2024
Pamela A. Casey O'Brien,
Register of Probate.

Posted to MNPA website: <http://masspublicnotices.org>

April 26, 2024 MC

LEGAL NOTICE



Manchester Town Hall
10 Central Street
Manchester-by-the-Sea, MA, 01944

BOARD OF HEALTH

Continued Public Hearing Notice

The Manchester Board of Health will hold a continued public hearing on Thursday, May 9, 2024 at 6:00 p.m. to review the following proposed regulations:

- Regulations for Private Wells, revised

The continued public hearing will be held in room #5 of the Manchester Town Hall, located at 10 Central Street in Manchester-by-the-Sea as well as on the Zoom meeting platform. Copies of the draft regulations are available on

the Town website and from the Board of Health office. The Zoom link for the meeting will be made available on the Board of Health website www.manchester.ma.us.

Questions may be directed to the Board of Health.

Peter Colarusso, Chairperson
Manchester Board of Health

Town Hall
10 Central Street
Manchester-by-the-Sea, MA
978 526 7385

Posted to MNPA website: <http://masspublicnotices.org>

April 26, 2024 MC
May 3, 2024 MC

PUBLIC NOTICE



Town of Manchester-by-Sea
Office of the
CONSERVATION COMMISSION
Town Hall, 10 Central Street,
Manchester-by-Sea, MA 01944-1399

Public Hearing Notice to be Published on or before 4/26/24

The Town of Manchester requests the Commission make a decision regarding a Request for Amendment to an Order of Conditions for additional restoration of Black Beach within Coastal Dunes at Ocean Street (map 7, lot 26). This request will be discussed at a VIRTUAL meeting on Tuesday, May 7 at 6:30 p.m. and will be reviewed under the Massachusetts Wetlands Protection Act (MGL Chapter 131, Section 40) and/or the Manchester General Wetlands Bylaw.

MNPA website: <http://masspublicnotices.org>
April 26, 2023 MC

PUBLIC NOTICE



Town of Manchester-by-Sea
Office of the
CONSERVATION COMMISSION
Town Hall, 10 Central Street,
Manchester-by-Sea, MA 01944-1399

Public Hearing Notice to be Published on or before 4/26/24

The Town of Manchester requests the Commission make a decision regarding a Request for Amendment to an Order of Conditions for additional restoration of Black Beach within Coastal Dunes at Ocean Street (map 7, lot 26). This request will be discussed at a VIRTUAL meeting on Tuesday, May 7 at 6:30 p.m. and will be reviewed under the Massachusetts Wetlands Protection Act (MGL Chapter 131, Section 40) and/or the Manchester General Wetlands Bylaw.

MNPA website: <http://masspublicnotices.org>
April 26, 2023 MC



The North Shore's Premier Real Estate Agency



Featured LISTING

MANCHESTER

\$3,790,000 | Gretchen Berg

Seaside compound near Tuck's Point on 1.183 acres has Atlantic & Bakers Island views. Many 2019 updates/renovations. Fireplaced living room, butler's pantry, media room, office, gym, 3 decks.



IPSWICH

\$1,195,000 | Alle Cutler

Thoughtfully re-designed 4+ bedroom home with 3.5 baths, hardwood floors, flexible living/family room areas and eat-in kitchen. Expansive deck overlooking open yard, extra space in basement and 2-car garage.



NEWBURY

LAND

\$995,000 | Susan Collins

Build your own riverfront property on banks of Parker River. 110 feet direct frontage. 3-acre cleared /surveyed lot. Area for private dock. Perk test done. Minutes to Plum Island, marina, train.



GLOUCESTER

\$920,000 | Ann Olivo & Rick Marshall

New high-end construction condo with time to add your personal choices! Primary suite on main level with water views, chef worthy kitchen, living room with slider to patio. Close to village and beaches.



ROCKPORT

\$780,000 | Jackelyn Enslow

Beachfront condo unit with two bedrooms, one bath and separate studio space. Modern finishes and amenities, plus rental opportunity. Spend time on Long Beach – the North Shore's best beach getaway.



DANVERS

\$549,000 | Holly Baldassare

Two-story condo unit at Olde Salem Village with 2 bedrooms, 2.5 baths, spacious living room with electric fireplace and slider to deck. Charming eat-in kitchen, dining room and assigned parking and garage.

1 BEACH STREET • MANCHESTER-BY-THE-SEA, MA 01944 | 978.526.8555 | JBARRETTREALTY.COM



Find us on [f](https://www.facebook.com/JBarrettRealtyNorthShore):JBarrettRealtyNorthShore

**COLDWELL BANKER
MANCHESTER-BY-THE-SEA**



NEW

**Barnside
Boxford | \$1,695,000**

This Boxford light filled, beautifully renovated large colonial exudes simple elegance. The pristine 4 bed 3.5 bath home sits majestically on a professionally landscaped 2 AC lot.

**JULIE FERRIERO | Realtor
978-4238086**



OPEN HOUSE
MAY 4 & 5

**457 Washington St
Gloucester | \$710,000**

The Seller invites you to tour this immaculate 2 bed, 2 bath condo in close proximity to Wheeler's point & all things Gloucester. Beautiful sunlight, amazing gardens, amenities abound.

**The Hope Watt Bucci Team | Realtor
978-808-5451**



**23 Forest Lane
Manchester | \$1,399,000**

Spacious 4 bedroom (First floor primary), 2.5 bath home, 2 car garage. Approx. 1 acre of beautiful green space.

**Marianne Round | Realtor
978-902-5452**



**4 Lane St
Annisquam | \$3,475,000**

Iconic Annisquam waterfront property located at the head of Lobster Cove. Proudly sited on over an acre of land with rolling lawns, bountiful seaside gardens and private tidal float and dock. The property enjoys stunning views of the mesmerizing changing tides in Lobster Cove. The property consists of a 9 room, 3 bedroom, 3.5 main house and handsome barn conversion guest house with great room, kitchen, bathroom and bedroom. Both structures offer stone terraces and stellar water views from every window.

**Scott Smith | Realtor | 617-750-2793
Lynda Surdam | Realtor | 978-764-7474**



WHEREVER YOU DREAM OF LIVING,
WE'LL HELP GUIDE YOU THERE.



40 BEACH STREET, MANCHESTER-BY-THE-SEA, MA 01944
TELEPHONE 978-526-7572

COLDWELLBANKERHOMES.COM