



welcome to

# PAMPA

SHOPPING • OUTDOORS • MUSEUMS • FAMILY ENTERTAINMENT • DINING

Come and stay a while!



Veterans of Foreign Wars  
Post 1657

DATE Feb 23, 2021

10735

PAY TO THE ORDER OF 2020 Voice of Democracy Patricia Winters \$3,625.00

Three Thousand Six Hundred Twenty Five & 00/100 DOLLARS

MEMO VFW Post #1657 Rick Dunn-Post Commander

⑆130004⑆109890 0⑆



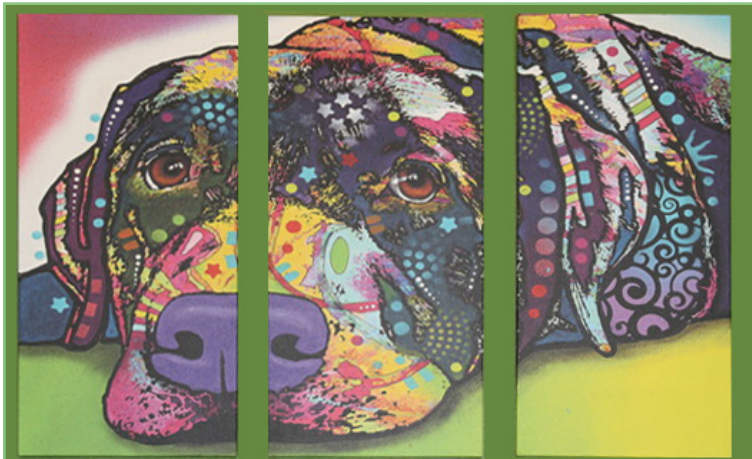
# Your local pharmacy, dedicated to better service!

At Keyes Pharmacy, our knowledgeable staff is always willing to take the time to answer all of your questions. You can relax knowing all of your prescription and over-the-counter medication needs are taken care of.



## Keyes Pharmacy

928 North Hobart • 806.669.1202



### PREMIER PET CARE

Separate boarding for cats and dogs •  
 Spacious waiting room • Clean establishment  
 Highest standard of care  
 Preventative medicine • Accessible location  
 Larger parking area • Meets ada requirements

### GRAY COUNTY VETERINARY CLINIC

806-665-7197 • 1901 N. Price Road  
[graycountyvet.com](http://graycountyvet.com)

Voted "Best Vet Clinic" 2017•2018•2020•2021

### Pampa ISD Information

Pampa High School.....111 E. Harvester Ave.....806-669-4800  
 Pampa Junior High School.....4000 Bad Cattle Co. Rd.....806-669-4900  
 Austin Elementary.....1900 N. Duncan.....806-669-4760  
 Lamar Elementary.....1234 S. Nelson St.....806-669-4880  
 Travis Elementary.....1900 N. Duncan.....806-669-4750  
 Wilson Elementary.....1234 S. Nelson St.....806-669-4930

### Neighboring School Districts:



**Lefors ISD**  
 209 E. 5th  
 Lefors, TX  
 806-835-2533



**White Deer ISD**  
 601 Omohundro  
 Street  
 White Deer, TX  
 806-883-2311



**Grandview-Hopkins ISD**  
 11676 FM 293  
 806-669-3831



**Miami ISD**  
 800 Warrior  
 Way  
 Miami, TX  
 806-868-3971



## MAY

- **Pampa Partnership Golf Tournament** held at the Pampa Country Club and Hidden Hills Golf Course.
- **Pampa High School Honors Banquet**

## JUNE

- **Burnin' the Bricks**, sponsored by High Plains Cruisers and others. Events include a burnout competition, car show, cruise night, drag races and a cook-off.

## JULY

- **Fourth of July Fireworks Display**, provided by the City of Pampa at Recreation Park.
- **Tri-State Seniors Golf Tournament**, held at the Pampa Country Club.

## AUGUST

- **Top O' Texas Rodeo**, one weekend long at the Rodeo Grounds at Recreation Park. Includes the Kid Pony Show and Junior Rodeo, a Saturday morning rodeo parade and the Top O' Texas Rodeo Queen competition. Rodeo office is in the Community Building, 200 N. Ballard, 806-669-0434.
- **Relay for Life** at Recreation Park.
- **PampaFest** in Downtown Pampa

## SEPTEMBER

- **Chautauqua Celebration**, Labor Day, Central Park, sponsored by the Pampa Fine Arts Association.
- **Pampa High School Homecoming Parade**, held on Homecoming Friday (date is either in September or October).

## OCTOBER

- **Blessing of the Animals**, St. Matthews Episcopal Church.
- **Country Fair**, held at M.K. Brown Auditorium & Civic Center and sponsored by the Pampa Chamber of Commerce. Includes a dinner and live auction.
- **Pampa's Tribute to Woody Guthrie**, held at the Woody Guthrie Folk Music Center and the Woody Guthrie Inn.

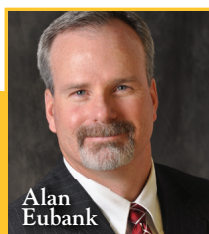
## NOVEMBER

- Pampa ISD Veteran's Day program at M.K. Brown on Veteran's Day.

## DECEMBER

- Soup with Mrs. Claus
- Salvation Army Angel Tree Program
- **Christmas Parade**, sponsored by the Pampa Chamber of Commerce.
- **The Nutcracker** at M.K. Brown Auditorium, put on by local performers every holiday season.

# HAPPY<sup>®</sup> to be in Pampa



Alan  
Eubank



Kay  
West



Erica  
Guzman



Misty  
Auwen



Jolita  
Sells

Welcome to the brighter side of banking. Where every transaction and interaction is built on over 100 years of community-focused, know-you-by-name service.

Become part of our family today at  
[HappyBank.com](http://HappyBank.com)



# HAPPY STATE BANK

MEMBER FDIC



# The Top O' Texas Gold Coats

Ribbon cuttings have been a ceremonial symbol of a new beginning for a very long time. Sometimes the ribbon cutting is the signal of the beginning a brand new business, or one who is expanding into a new city, or even one who is just receiving a refreshing update. No matter the situation, it's a happy occasion and an inauguration day of great change and a bright future. Perhaps that's why the Pampa Chamber of Commerce Top O' Texans dawn the gold coats as each new member of the chamber joins the organization with a celebratory ribbon cutting. Having all of those Gold Coats show up on the stoop of your building signifies a turning point in your business. Now that you have joined many other businesses who have successfully served



generations of Pampans- you now have their support as does the success of your business in the future.

The Gold Coats, as they are so widely known as, are the official greeters of Pampa. Many will find them at chamber events or around town enjoying the city and all of its luster. It is a proud organization who

enjoys showing off the success of Pampa and bragging about all it has to offer. If you are ever interested in joining the gold coats and helping to carry on the tradition of the celebration of united commerce in Pampa, don't hesitate to contact the chamber.

- Courtney Oxley, Top O' Texas Goldcoats President



**SHEILA  
WEBB**  
Agent

**Las Pampas Square - North Side**  
**PO Box 2689**  
**Pampa, Texas 79066-2689**  
**(806)669-3861 • (800)299-3861**

 **State Farm**™

"Like A Good Neighbor, State Farm Is There."

STATE FARM INSURANCE COMPANIES HOME OFFICES: BLOOMINGTON, ILLINOIS

**B&B  
PHARMACY**

friendly hometown service for 33 years

300 N. BALLARD  
806.665.5788

Most Insurance Plans Accepted

Ostomy Supplies

Full Service Pharmacy

Knowledgeable Staff

Night Emergency Number  
806.665.2892



# Pampa Chamber of Commerce.

## The hub of Pampa's Community

By JOHN LEE

pampanewseditor@gmail.com

Twitter: @jcl1987

Whether you're moving to Pampa or coming to visit, the Pampa Chamber of Commerce, located at 200 N. Ballard, should be one of the first stops every one makes.



**Shawna Elliott**

"The Chamber is the hub of the community," Pampa Chamber Executive Director Shawna Elliott said. "Our main focus is to promote businesses that are members of the Chamber and get the word out. We are not a marketing or advertising firm. We are there for our members to inform and educate our members, as well as the Pampa community."

As the executive director, Elliott stops by businesses, visits and see how they are doing. The Chamber

also shares social media posts of those businesses and holds quarterly networking luncheons.

"I'm in the process of working with some companies to webinars and seminars for our business community," Elliott said.

The Pampa Chamber of Commerce has about 325 members that range anywhere from businesses, non-profits and even individuals.

"We have individuals that want to be a part of the Chamber to be a part of the community," Elliott said. "We have retail, manufacturing, etc. We have a wide variety (of businesses)."

As a non-profit themselves, the Pampa Chamber survives on membership dues and fundraisers such as their annual golf tournament.

"We look to do more community events whether it's a fundraiser or just an event to get the community involved," Elliott said.

The Chambers annual Christmas Parade, set for Dec. 3, will be at night for the first time in 2021.

As for those businesses, Pampa is only seeing more and more come in, even during the 2020 COVID-19 pandemic.

"I've heard from several different individuals that are on the outside looking in and they see Pampa on an upward trend," Elliott said. "The production of the oil and gas in the Texas Panhandle is going up and increasing. In the next five years, we will be surprised at how much Pampa has grown in businesses and population."

Some of the new businesses in Pampa include Keystone Tower Systems, Reliant Energy, Ace Hardware and Tire Works and Tire Pros, Pampa Furniture Exchange and Mattresses

The Pampa Chamber of Commerce has a Facebook page and can be reached at 806-669-3241.

## Governing bodies

### Pampa City Commissioners

- Mayor Lance DeFever
- Paul Searl
- Jimmy Keough
- Bryan Fisher
- Brian Doughty

### Gray County Commissioners

- Judge, Chris Porter
- Logan Hudson
- Lake Arrington
- John Mark Baggerman
- Jeff Haley

### Pampa ISD Board of Trustees

- Superintendent Hugh Piatt
- President Matt Brock
- Cade Taylor
- Luis Nava
- Misty LeBlanc
- Denise Intemann
- David Godino
- Richard Qualls

### Pampa Economic Development Corporation Board

- Executive director Clay Rice
- Glennette Goode, president
- Troy Newton
- Emily Arrington
- Jason Bagwell
- Sue Fatheree
- Tanya Larkin
- Ted Hutto





# BRANDON'S Flowers & Fine Gifts

Pampa's Trusted Local Florist Since 2003  
123 N. Cuyler St. • [www.brandonsflowers.com](http://www.brandonsflowers.com) • 806.665.5546



Since 1933

# Coney Island CAFE

Home of the  
famous Coney!

Don't forget  
to order your  
favorite pies!

114 W. Foster • 806-669-9137

*Serving Great Food Since 1933*



**Dry cleaning and laundry. Jeans standing on their  
own, in real Texas starch!**



**1437 N. Hobart  
806-665-5112**



# We Open **MORE** **DOORS** for You

We won't rest until the keys to the right home are in the right hands: yours.



If you're interested in professional and personalized real estate services for residential, commercial, retail, farm and ranch then count on us at Panhandle Plains Realty. Our team will provide friendly and efficient solutions including finding your ideal warehouse or fenced in lot.



**516 S Russell St • Pampa • 806-662-1312**



**Linda Laycock**  
REALTOR®  
BROKER®, GRI



**Katrina Bigham**  
REALTOR®  
(806)898-8510



**Tisha Calhoun**  
REALTOR®  
(806)440-4153



**Cassie Cambern**  
REALTOR®  
(806)204-0935



**Heidi Chronister**  
REALTOR®  
(806)663-3034



**Gay-Lynn Coutts**  
REALTOR®  
806-662-1474



**Gena Davidson**  
Agent - Lic #676155  
(806)679-1908



**Roy Devoll**  
REALTOR®  
(806)896-0000



**Valerie Hill**  
REALTOR®  
(806)662-5866



**Nita Hogue**  
REALTOR®  
(806)663-3900



**Katherine Jeffcoat**  
REALTOR®  
(580)467-0015



**Linda Lapacka**  
Broker - Lic #578172  
(806)662-9611



**Christy Price Ufford**  
REALTOR®  
806-662-1474



**Angel Wheeler**  
REALTOR®  
(806)662-0065

*Find a place to hang your hat for the night, or a while!*

	Pool	Spa	Laundry	Gym	Free parking	Free Breakfast	Wi-Fi	Pets
<b>Best Western Northgate</b> 2831 Perryton Parkway 806-665-0926								
<b>Holiday Inn Express</b> 3119 Perryton Parkway 806-665-9500								
<b>Hampton Inn</b> 2820 N. Perryton Parkway 806-669-1555								
<b>AmericInn</b> 1101 N. Hobart 806-665-4404								
<b>La Quinta</b> 500 W. Harvester Ave. 806-486-1575								



# pH2O

AMPA AQUATIC CENTER

**CHECK OUT  
OUR FACEBOOK  
PAGE FOR THE  
LATEST TIMES  
AND UPDATES!**



**VISIT US ONLINE FOR HOURS AND  
SEASON PASS PRICES!  
[WWW.CITYOFPAMPA.ORG](http://WWW.CITYOFPAMPA.ORG)**



**1400 N SUMNER STREET 806-665-5730**



# Pampa ISD is all-in with Harvester PRIDE



By JOHN LEE

pampanewseditor@gmail.com

Twitter: @jcl1987

During the turn of the century, there was a push to send every single student to college. As a result, vocational and the technical programs went by the wayside.

In 2019, Texas legislators passed House Bill 3, which was a sweeping change in curriculum recognizing the simple truth that college is not for everyone. For some students, it's in their best interest to enter the workforce or establish a trade that suits them.

"Now, we can prove we are doing a good job with our kids to the State when they've got a industry-based certification at the end of their program," Pampa High School Principal Hugh Piatt said. "We've got kids knocking it out of the park. Last year (2020-21) our kids earned 332 industry-based certifications."

These certifications are in auto-tech, business, education, health science, information technology, veterinary medicine and welding.

"Each of our CTE (Career-Technical Education) pathways lead to industry-based certifications," Piatt said. "Talk about a change from where we were a few years ago. Now we recognize there are kids that college-bound and kids who are career-bound. And, of course, we have kids that choose the military."

There is still the push for academics and the core subjects: math, social studies, science and language arts. Through a partnership with Clarendon College, even if a student doesn't finish with an associate's degree at the end of their high school tenure, they still finish with college credit hours.

"We had 47 year's in last year's graduating class that had

20-plus college hours going into college," Piatt said. "We had several others that had between one and 19 hours."

The CTE, including the addition of Education CTE courses, not only benefits the student but the entire community of Pampa.

"We are growing our own," Piatt said. "We've got two young ladies who graduated through the education program. They were doing student-teaching working with teachers during the school year."

"We hired them to work summer-school and now we've hired them to be aides while they are doing online college. Because they are employed by us they are already earning retirement years and as soon as they graduate we can hire them as teachers."

Pampa ISD has a partnership with several area businesses where, just like the District, students can be hired right out of high school in welding, auto-tech and nursing.

Some of the academic pathways include dual-credit, pre-AP (Advanced Placement), AP courses, TSI testing, ACT testing and SAT testing.

"We offer all of that on campus," Piatt said. "We also offer them during the school day so students don't have to come up on Saturdays. All of our seniors fill out the FAFSA (financial aid), also."

The addition of Hereford and  
**PAMPA** cont. on page 10



# Pampa ISD is all-in with Harvester PRIDE

## Pampa

Continued From Page 9

Canyon to Pampa's UIL academics district didn't change how well Pampa finished in their academic competitions.

"This last year we got second to Canyon," Piatt said. "We were in the lead going into the final event: journalism. Canyon won. Canyon has a journalism department where we don't. We're com-

peting at a pretty high level. We've got kids going to Regional and State in UIL academics."

Piatt, now in his seventh year in Pampa, noted that Pampa will never be where they want to be, even if they earned first place in every competition.

"It's 'how do we get better?'" Piatt said. "We want continual improvement to get kids opportunities to

**PRIDE** cont. on page 11



HUGH PIATT



**CABOT CORPORATION** is a leading global specialty chemicals and performance materials company serving key industries including **transportation, infrastructure, environment** and **consumer**. Cabot delivers **PERFORMANCE SOLUTIONS** that solve customers' challenges today, and prepares them to meet tomorrow's needs.

At Cabot, innovation is driven by our passion to advance our customers' through our deep understanding of their needs, their industries and the global trends that impact their business. The power of Cabot is that we combine this knowledge with our technical expertise. Our technical, commercial and manufacturing talent is among the best in the industry. We work with our customers to create value through innovation and technology. Our research and development capability is a major reason why Cabot has been an industry leader for more than 130 years.



Pampa Facilities  
Hwy 60 • Pampa • 661-3100  
[www.cabot-corp.com](http://www.cabot-corp.com)

## Carter Sand & Gravel, LLC

Est. 1942

Supplying the Panhandle area with sand, gravel and professional construction for over 70 years.

- Backhoe
- Earth Moving
- Excavation
- Roustabout
- Pipeline
- Trucking
- Blue Top



1701 N. Price Rd.  
Pampa, TX  
(806)669-6615





“And again, it’s making the kids experience something they wouldn’t have otherwise. How do we demonstrate excellence?”

The Pampa High School Athletic Program recently added Cody Robinson as the director and with him came a number of new, young coaches hungry to make the program the best it can be.

“Our job is always when we lose somebody how do we bring someone in that will make a difference,” Piatt said. “How do we get better? Cody came in with new ideas. We

got better with some facilities because of new ideas. We have new excitement and new energy.

“Hopefully that comes with more production in wins. But it’s not about that. It’s about making young men and women better.”

When Robinson came into the program, he introduced the PRIDE acronym: P-Perfect Effort, R-Relentless Attack, I-Integrity, D-Discipline and E-selfless (The second E because “I” am second).

*IN* cont. on page 12

## Pride

Continued From Page 10

be successful. Whether it’s UIL academics, CTE, athletics, etc. We want our kids to experience excellence.”

Piatt said part of that process is putting the right people in the right places.

“We want to put the person in charge who wants to grow that program,” Piatt said.

**No Credit Check**  
**All Prices Clearly Marked**  
**Free Online Car-Fax**

**DOUG BOYD MOTOR**

Corner of Hwy 60 & 70 • Pampa • 806.669.6062

[www.dougboydmotors.com](http://www.dougboydmotors.com)



**In**

**Continued From Page 11**

Piatt said the District looks to use that acronym to train the staff.

“We want to teach that at every level,” Piatt said. “It’s not just a football thing. Not just a high school athletic thing. It’s going to be an ISD

thing.

“We are teaching this idea. We’re going to teach our staff that to reference that whether in the classroom or the cafeteria.”

As the District looks to add a new superintendent, Piatt and the staff at Pampa High School is excited to start a new school year.



THIS YEAR, UNLEASH YOUR POTENTIAL WITH

# ENDLESS POSSIBILITIES

- On Campus & Online
- Day & Evening
- Financial Aid available *(to those who qualify)*
- On campus Housing in Clarendon
- Academic & Career Tech programs



**You see students. We see Potential.**

*Courses in Clarendon, Pampa, Childress, Amarillo & Online*

**1-800-687-9737**





**MAKE IT A DAY!  
OR NIGHT**



“Where the Wheat Grows and the Oil Flows”

**SHOP PLAY & STAY**

**LODGING**

**DINING**

**SHOPPING**

**PARKS**

**MUSEUMS**

**ENTERTAINMENT & MORE**



*Big City Amenities  
In A Small Town*



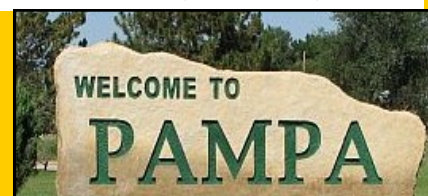
The Greater Pampa Area Chamber of Commerce is a voluntary partnership of businesses, professionals and individuals investing their time and financial support to promote economic vitality and improve the quality of life in the Greater Pampa Area.

The Pampa Chamber of Commerce serves as a resource and information broker as well as a catalyst through which the citizens can work together for the common good of the Greater Pampa area and Gray County.

**Pampa Chamber of Commerce**



**806.669.3241    www.pampachamber.com**





# PAMPA ECONOMIC DEVELOPMENT CORPORATION

## *Building a Stronger Future*

The Pampa Economic Development Corporation is an organization that promotes new business in Pampa. The Pampa EDC type B has aggressive business incentives funded from the half-cent sales tax for Economic Development that yields over \$1,000,000 dollars annually. Incentives are available to companies creating new jobs in Pampa on a project by project basis. Location and excellent quality of life make Pampa a prime spot for new industrial business and sales. Pampa, Texas is located 50 miles Northeast of Amarillo, Texas, 113 miles from Elk City, Oklahoma and 120 miles from Liberal, Kansas.



The Pampa Economic Development Corp. and Xcel Energy have partnered on efforts to attract new business to the Pampa Energy Center, an industrial site located along U.S. Highway 60 west of the city. As part of Xcel Energy's Certified Site Program, a 250-acre space known as Pampa Energy Center South received site certification following a robust year-long site analysis process. "Xcel Energy is now actively promoting Pampa's industrial capabilities to a much wider audience, which extends our reach considerably at no extra cost," said Clay Rice, Executive Director of the Pampa EDC.

"Having a partnership with Xcel Energy, which has the resources and know-how to market and promote one of the best industrial sites in the Panhandle region, is a terrific opportunity for Pampa and Gray County. The Pampa EDC looks forward to continuing to work with Xcel Energy on this venture," said Glennette Goode, president of the Pampa Energy Center Board. Certification of the Pampa Energy Center North and South sites will help Pampa be more competitive in the marketplace by making it faster, easier, and less expensive for developers and site selectors to consider real estate for their client.

Pampa Energy Center is Pampa EDC's rail served Industrial Park. With approximately 1,000 developable acres of land and 5500 acres of water rights, the property is more than sufficient to market as one of the finest Industrial Parks in the state. The abundance of acreage owned by Pampa Energy Center will be excellent for a variety of industrial development projects. Companies located at Pampa Energy Center are: Flogistix, Proman, Rampa, Inc., and RenewTest, LLC.



**LEADING | EDG**  
growing communities one business at a time.

The Pampa EDC is pleased to have Spencer McElhannon of Leading EDG to assist our community's aspiring entrepreneurs and small business owners. Spencer offers consultative services free of charge courtesy of the Pampa EDC. [www.leadingedg.com](http://www.leadingedg.com)



Space still available—  
for leasing information  
contact: The Pampa EDC  
(806) 665-0800

**CHECK OUT OUR NEW WEBSITE,  
SOCIAL MEDIA AND LOGO**

One of the goals of our new website is to promote every business in Pampa/Gray County.

### PAMPA EDC EMPLOYEES

**Clay Rice**  
*Executive Director*

**Treasa Heuston**  
*Assistant Director Office & Records*

**Carol McCord**  
*Assistant Director Marketing & IT*

### PAMPA EDC BOARD MEMBERS

Glennette Goode  
Troy Newton  
Sue Fatheree  
Ted Hutto  
Emily Arrington, D.D.S.  
Jason Bagwell  
Tanya Larkin ED. D

### RECENT PAMPA EDC BUSINESS PROJECTS

Resound Networks  
Keystone Tower Systems  
Covid-19 Grants (Total 52)  
Wiskey Business Enterprise, LLC  
DBA Wiskey Grills

**107 E. FOSTER • (806)665-0800 • WWW.PAMPAEDC.COM**



15

# Pampa is open for lunch or dinner!



Kelley's Deli



Flipz



Coney Island Cafe



The Secret Chef at the Barn



# Pampa is open for dining in!

16

## Coney Island Cafe

114 W. Foster Avenue  
806-669-9137

"Since 1933, the Coney Island Café has served its famous homemade chili—on hot dogs and burgers—to generations of Pampa families, High School Harvesters, and visitors from around the world. The Coney is now in its 86th year of operation!"

## Kelley's Deli

1020 East Frederic  
806-665-5800

What sets Kelley's apart from regional chain stores is all of the food is made from scratch. "We have fresh-cooked food and don't have pre-packaged sandwiches or anything like that," Brenda said. "Your order is made here fresh. For salads, we don't use bagged lettuce; and we cut all of our own vegetables."

## The Secret Chef at the Barn

1500 N. Hobart  
806-292-1320

The Barn, homemade casseroles and desserts, daily hot lunches, salads and wraps. Menu items change daily with various hot plates and take-out. Almost everything made from scratch.

## Fire Creek Bar & Grill

2537 Perryton Parkway  
806-440-0574  
[www.firecreektexas.com](http://www.firecreektexas.com)

"We have the best inviting atmosphere, best priced menu and friendly service. It's the type of place you can bring your first date, family or friend to share a special event or just a place to have the best of Lunch or Dinner."

## Yum Yum Thai

1201 N. Hobart  
806-669-9502

Thai and Chinese Food including egg rolls, fried shrimp, noodles, curry, rice, wontons and more.

## Verona's Italian Bistro

1203 N. Hobart #14  
806-669-9901

Locally-owned restaurant including chicken fettucine alfredo, picata, cacciatore, scaparella, talpia fiorentina, shrimp alfredo, pizza, philly steak, lasagna, ravioli, spinach ravioli and more.

## Chubby's Burritos

1328 N. Hobart Street

806-688-1160



Build-your-own burritos and nacho plates.

## Flipz Burgers

1801 N. Hobart  
806-665-2000

While first appearance lends to the idea that Flipz is a newly-designed fast food, chain restaurant, the made-to-order, hand-crafted products sold illustrates it's exclusivity to Pampa.

## Dyers

Highway 60 West  
806-665-4401

The longevity of Dyer's Bar-B-Que speaks to its authenticity and dedication, not only in the restaurants but also in its catering practices.

**Blue DEF**  
DIESEL EXHAUST FLUID

**DSL EXHAUST FLUID**  
PULL UP & FILL UP IN THE BACK

**NAPA AUTO PARTS**

Automotive Parts Distribution  
**416 W. FOSTER 806.669.3305**

**PAYING CASH FOR JUNK BATTERIES**

The Best Journeys In Life Lead You Home



Harvest Park  
Apartments

Affordable Housing

Move In Special



Two Bedrooms  
Three Bedrooms  
Fitness Center  
Dog Park  
Playground

1011 E. Harvester Ave | Pampa | 806.486.1612





**The Texas Rose Steakhouse**

**3023 State Highway 70, Pampa  
806-669-1009**

**<https://texasrosesteakhouse.com/menu>**

“With over 30 years of experience cooking and owning many local restaurants, our team is excited to present their vision to you and all our guests. Our caring and committed staff will ensure you have a fantastic experience with us.”

**The Plaza**

**1201 N. Hobart Street #3  
806-688-0031**

**<https://www.theplazarestaurant.com/menu-categories/appetizers-pampa/>**

“Family owned and operated, The Plaza Mexican Restaurant strives to provide our guests quality Tex-Mex Dishes and the service everyone deserves. As a Customer, you are our priority and the motivation that has allowed us to continue this tradition which commenced in 1982. We humbly welcome you to The Plaza Mexican Restaurant.” ~The Ramos Family

**North 40 Settler’s Restaurant**

**2545 Perryton Parkway  
806-669-6237**

North 40 Settler’s Restaurant

offers a wide variety of dining options from 5:30 a.m. to 2 p.m.



**Hamburger Station**

**11820 U.S. 60  
806-665-9131**

Locally-owned breakfast and lunch plates for 38 years. Besides the food that makes up the name, The Hamburger Station sells a full line of breakfast items, salads and various dinner plates including steak sandwiches, BLTs and even a Mexican cheeseburger, which resembles a cheeseburger on a tortilla.

**Jay’s Drive-Inn**

**924 Alcock St.  
806-669-2722**

Old-Fashioned Drive-In with burgers, sandwiches, salads, dinner plates and various sides. Be sure to try a Super Dog.



**Hoagies Deli**

**1201 N. Hobart  
806-665-0292**

We have evolved slowly over 25 years, and have recently given ourselves a new identity. We will never lose focus of that delicious Phillie Steak sandwich that has been the heart and soul of this company for so many years. Our Phillie Steak Sandwich is who we are, and now we feel that new menu items such as our new line of Panini’s will do nothing but help us add to, and build on our previous success right into the future.

**Finley’s Fountain**

**114 N. Cuyler  
806-688-0207**

An American Diner and Bakery located in Downtown Pampa. Finley’s Fountain exemplifies Great Food, Service and Fellowship. Come see us and stay a while.



**Diners**

**The Coffee Shop**

220 N. Cuyler  
806-665-2999

**Mexican food**

**El Toro Bronco**

315 N. Nelson  
806-216-1566

**Fuegos**

**Restaurant**

521 W. Brown  
806-279-1919

**Nayelis Delicias**

1308 Alcock  
806-662-9918

**La Cueva**

217 E. Brown  
806-440-0122

**La Herradura**

1100 E. Frederick  
806-665-0538

**Mejias**

1100 E. Frederick  
806-665-0538

**Mexican food**

**El Asador de Tito**

725 W. Brown  
806-419-3040

**El Sabor de Mi Tierra**

113 S. Cuyler  
806-419-3022

**Oriental food**

**China Dragon**

1307 N. Hobart  
806-665-8286

**Osaki Steak House**

2545 Perryton Parkway  
806-669-1828

**American**

**Pampa**

**Country Club**

2421 Alcock St.  
806-665-8431

**Harvester Donuts**

508 N. Hobart  
806-669-2242

**Texas Rose**

2841 Perryton Parkway  
806-669-1009

**American**

**United Deli**

1402 N. Hobart  
806-665-7212

**Fire Creek Grill**

2537 Perryton Parkway  
806-440-0574

**Fast food**

**Braum’s**

1032 N. Hobart  
806-665-8930

**Chicken Express**

2201 Perryton Parkway  
806-669-2442

**Domino’s**

1541 N. Hobart  
806-665-8080

**KFC**

2201 N. Hobart  
806-665-2766

**Little Caesar’s**

2505 Perryton Parkway  
806-688-1088

**McDonald’s**

1201 N. Hobart  
806-665-5891

**Fast Food**

**Pizza Hut**

1500 N. Banks  
806-665-0887

**Sonic**

1404 N. Hobart  
806-669-3171

**Starbucks**

1420 N. Hobart  
806-669-6115

**Subway**

2141 N. Hobart  
806-669-7702

**Taco Bell**

1002 N. Hobart  
806-486-1490



**Sparklight®**

# CONNECT YOUR WORLD

WITH RELIABLE  
HIGH-SPEED INTERNET

Work, learn and play on a fast  
fiber-rich network.

ACT NOW!  
**SAVE \$186**  
with FREE INSTALLATION\*\*

Up to **100 Mbps Speeds**  
for only

**\$39** /MO FOR  
6 MOS\*

\*Reg. price \$55/mo. 350GB data plan included. Activation fee may apply.

**UNLIMITED DATA AVAILABLE!**  
**NO CONTRACTS**



**GO EVEN  
FASTER!**  
Ask about Gig  
service.

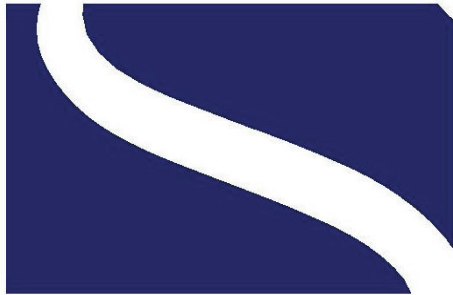
**Claim your special limited-time  
offer by 09/30/21.**

Call **855-692-4117**  
or visit [sparklight.com/offers](http://sparklight.com/offers)

\*Includes 350GB data plan. \$10 charge for each additional 100GB, up to \$50/mo. Limited-time offer expires September 30, 2021. Promotional rate effective for 6 months. Regular price \$55/month. Offer good for new Sparklight customers only. Activation and deposit fees based on credit report. Equipment and taxes not included. Restrictions apply. Call for details. \*\*Savings is based on 6 mo service discount of \$16/mo, plus a waived \$90 installation fee.



# Great Plains Abstract & Title Co.



a Shelton Title Company

*Proudly serving Gray and  
Roberts Counties*

Shelly Cook, Manager | 806-669-2899 | [www.sheltontitleco.com](http://www.sheltontitleco.com)

# Fairview

Cemetery Association

FOR OVER 100 YEARS, families have looked to Fairview Cemetery to provide a beautiful and peaceful resting place for their loved ones.

**665-2412 • 1600 Duncan**



## DeFever Monument Company

MONUMENTS • BENCHES • VASES

**806.669.4495**

[defevermonumentcompany.com](http://defevermonumentcompany.com)

## **BUILDING BETTER RISK PROGRAMS**

INSURICA specializes in core industries and business disciplines, providing our clients with unparalleled access to unique coverage and risk management programs... all while maintaining a local agent relationship.

- Commercial Insurance
- Employee Benefits
- Workers' Compensation
- Personal Insurance

**INSURICA**




117 E. Kingsmill Ave.  
Pampa, TX 79065  
806.669.3333

[INSURICA.com](http://INSURICA.com)








**B&G Power Equipment**  
Sales & Rental

**STIHL**  
**GRAVELY**  
**Husqvarna**  
**HONDA**  
Power Equipment  
**RAIN BIRD**  
**ECHO**  
**Milwaukee**  
**BRIGGS & STRATTON**

**Residential  
Commercial  
Industrial**  
*Power Tools & Equipment*

The **Power** You Need To Get The Job Done

120 S. Hobart  
(806) 665-2366



**ZIMMATIC**  
BY LINDSAY

**Electricians  
Electrical Contractors**



**FIELDNET**  
BY LINDSAY



**Irrigation Systems Specialists**

Design  
Consulting  
Wiring  
Ditching  
Generators  
Pier Holes  
Transformers  
Electric Motors  
Facility Lighting  
Water Well Control  
Pole Line Construction  
Cable Location & Repair  
Agricultural Irrigation Systems



TECL# 17112



**(806) 665-4418** P. O. Box 759, 241 Western Street  
Pampa, Texas 79066-0759

*Where Your Visions Become Reality*

Full Service Floral Needs, Quinceañeras,  
Turn Key Event Planning, Weddings, Party Rentals,  
Linen Rentals, Tables, Chairs & More



**B & G**  
**FLORAL & EVENTS**

**806-669-5988 • 103 S Hobart**



LOVE  
SERVE  
CARE



# COUNTRY

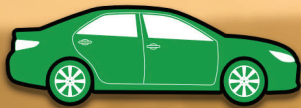
AUTO GROUP



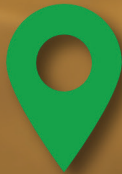
CHEVROLET

BUICK

TOYOTA



**CARS — TRUCKS — SUV'S**



Borger, Tx



Amarillo, Tx



Pampa, Tx

[countryautogroup.com](http://countryautogroup.com)

(806) 341-9688

# Pampa Museum Promotions preserves and promotes the history of Pampa

By JOHN LEE

pampanewseditor@gmail.com

Twitter: @jcl1987

The Pampa Museum Promotions, founded in 2020, was founded as a way to focus on the three museums in Pampa: the White Deer Land Museum, the Freedom Museum U.S.A. and the Woody Guthrie Folk Music Center Museum.

“It’s kind of a unique situation that Pampa has three museums,” Pampa Museum Promotions chairman John Curry said. “We decided that if we really focused on that and the ability of the museums to market themselves as a group instead of individually, we could make a lot of headway.”

One of the ways the Promotions helps promote the museums is through the Windows on a Wider World organization in Amarillo.

“We market ourselves as a museum experience in Pampa,” Curry said. “More than 1,000 kids came to Pampa in 2021 through WoWW and had the experience of going to all three museums while they were here.”

Through these museum day-trips, students learn about the Red River Wars, genealogy, Woody Guthrie, handle/touch military equipment and military history.

“We want to figure out ways to market Pampa in a variety of ways to experience history, not just one county museum,” Curry

said. “Our county museum, the White Deer Land Museum, has a lot more interactivity than just a ‘bunch of old stuff.’ We’ve gotten grants over time and want all of our museums to be successful.”

Curry said the museums have had occasions where tour groups have come through Pampa on buses and stopped by all three museums.

“We have learned there’s tremendous interest in the things we have,” Curry said. “The Woody Guthrie Museum has a large international following because of Woody Guthrie. The Freedom Museum has the potential of a large following and the Indian Wars situation has a lot of national interest. The Order of the Indian Wars has come here once and are planning their anniversary convention here in 2025.”

The White Deer Land Museum also houses the N-N Room, which has been used to host events involved with historical concept (educational, civic and cultural events).

“The Tri-State Seniors (the longest running seniors tournament in the country) and are interested in that history,” Curry said. “They had multiple tours while they were here and it ended up with us getting new members for the Friends of the WDLM and the museum.”

The Pampa Museum Promotions is operated by a



committee made up of those involved with the museums and is funded mostly through grant money.

The Pampa Museum Promotions will be hosting Joe Moser on Nov. 13, 2021 for “Lightning Down.”

## Information on the ‘Lightning Down’ event

On August 13, 1944, Joe Moser set off on his forty-fourth combat mission over occupied France. Soon, he would join almost 170 other Allied airmen as prisoners in Buchenwald, one of the most notorious and deadly of Nazi concentration camps. Tom Clavin’s *Lightning Down* tells this largely untold and riveting true story. Moser was just twenty-two years old, a farm boy from Washington State who fell in love with flying. During the War he realized his dream of piloting a P-38 Lightning, one of the most effective weapons the Army Air Corps had against

the powerful German Luftwaffe. But on that hot August morning he had to bail out of his damaged, burning plane. Captured immediately, Moser’s journey into hell began. Moser and his courageous comrades from England, Canada, New Zealand, and elsewhere endured the most horrific conditions during their imprisonment ... until the day the orders were issued by Hitler himself to execute them. Only a most desperate plan would save them. The page-turning momentum of *Lightning Down* is like that of a thriller, but the stories of imprisoned and brutalized airmen are true and told in unforgettable detail, led by the distinctly American voice of Joe Moser, who prays every day to be reunited with his family. *Lightning Down* is a can’t-put-it-down inspiring saga of brave men confronting great evil and great odds against survival.



# FREEDOM MUSEUM USA

Whether Army, Air Force, Navy, Marines, Coast Guard and Merchant Marines, both former and current veterans have a place they can visit here in Pampa to pay homage to their comrades-in-arms and recall their service times. The Freedom Museum recognizes all branches of the military and has artifacts from the Civil War forward.

Opened in 1994, the Freedom Museum was founded by the Pampa Army Airfield Reunion Association and the Pampa Veterans of Foreign Wars Post 1657. As well as remembering those who were stationed at the base, the purpose of the museum is “to collect, acquire, preserve and exhibit items of histori-

cal nature to America’s war efforts.” It is also to “educate each generation as to the efforts and sacrifices of war and to inscribe in their minds the cost of peace; to honor Americans in wars past; to preserve freedom by remembering the past; and to provide a tourist attraction for the City of Pampa, Texas.”

The building in which the museum is housed was built in 1939, as part of President Franklin D. Roosevelt’s “Alphabet Soup” policies and projects that had acronyms for names and came into order shortly after he was elected. It was built as a water pump station for the City of Pampa.

The museum is open from noon to 4 p.m. Tuesday through Saturday,

but will open for special tours if needed. The museum has an average of 25 visitors a day.

Freedom Museum USA is currently a learning partner with Window on a Wider World, an organization based in Amarillo which is dedicated to enriching the education of Texas Panhandle students through arts, science and cultural experiences. Over 500 students from around the area have visited in the museum in the 2020-21 school year.

How it evolved

Over time as the Pampa Army Air Field Museum Inc. formed in 1987 and the local VFW joined in 1990, their efforts started to take off. They formed the Hall of Fame, now the Panhandle Veterans Hall of Honor, and then

opened the museum in 1994. At time of its opening, the museum had the UH-1H Huey Helicopter, which was active in Vietnam, and the M110 self-propelled 8” howitzer.

Since then, the museum has acquired a WWII submarine periscope, a Mitchell B-25B, Norden Bomb sight, M2A1 Half-track, a Sikorsky HH-3F helicopter (the Coast Guard helicopter), a US Army H-446 Crane, F4E Phantom II fighter, 1951 M38 Korean War Jeep, WWII 1943 Ford Jeep, M60A1 Patton tank, an F-105 Thunderchief fighter bomber, B52 nuclear bomb case, 76mm T-124 Anti-Tank Gun and four M998 HMMWVs (Humvee). There is also an assortment of several other battle armaments

Photos courtesy of Della Moyer







# FREEDOM MUSEUM USA



and uniform collections.

The Freedom Museum in Pampa, along with ones in Amarillo and in Liberal, Kan., are among the handful of military museums in the Great Plains region.

Epps did say that there are not many museums that try to cover all the branches of the military.

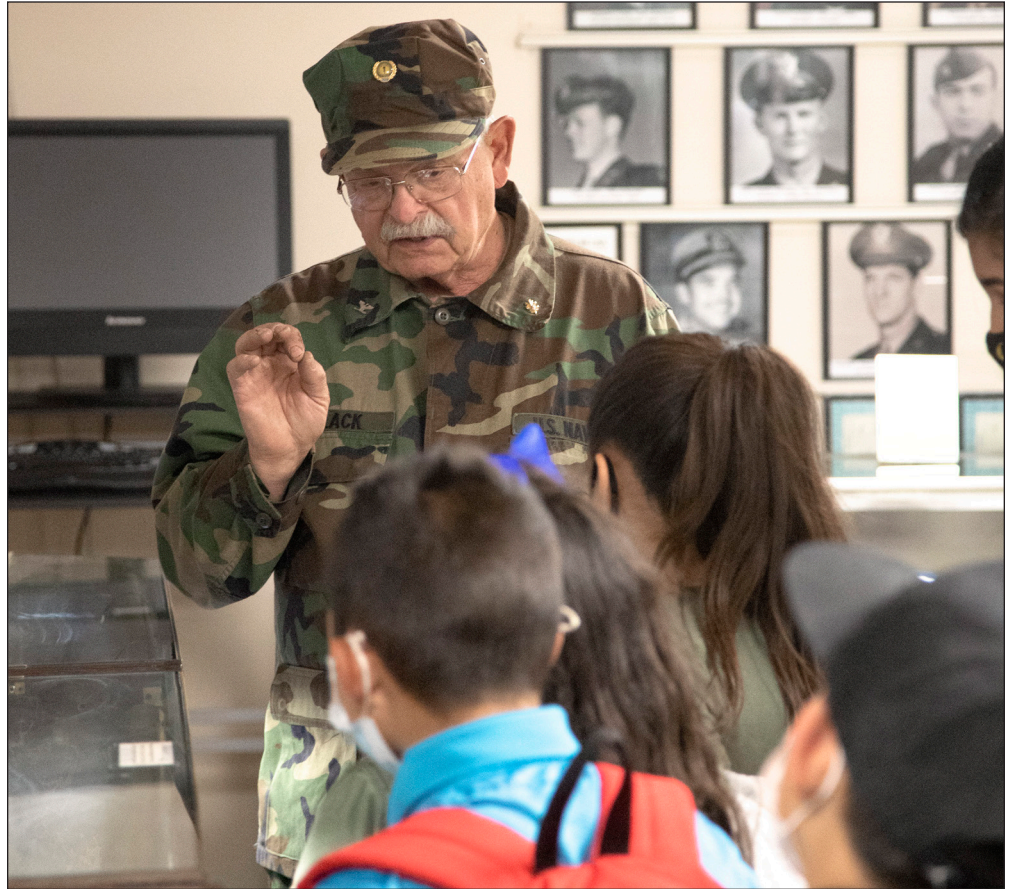
“We try to cover them all,” Epps said. “Even though we started for just Pampa Army Airfield, in the old days that was the Army Air Corps., which later became our Air Force. As it moved forward joining forces with the VFW, it was decided to remember everyone, of all branches of the service.”

Where the money comes from

The museum functions solely on donations. The museum is required by the federal government to have one full-time employee or they will lose all their displays and exhibits. That employee is Ron Howell, a retired law enforcement officer who served in the US Army in Vietnam. Howell enjoys guiding visitors through the museum and relaying stories about various exhibits.

When entering the museum, guests are greeted by either Epps, Howell or one of several volunteers who are always enthusiastic about their museum.

If the tour starts on the right, tourists are taken into the Waters-Holt Room which contains the Hall of Honor and the two jeeps as well as a full-size diorama representing a jungle camp in Vietnam. The Hall of Honor has recently been upgraded and can now be accessed digitally in house and online. This room is also used to display any special exhibits which may be ongoing. The current exhibit is “Vietnam - The Real Stories”. Various artifacts for all wars are contained in the display cases.



Cutting across the front of the museum are models, uniforms and two ejection seats. Entering the West side of the museum, there is a model and pictures from the old Pampa Army Air Field, or the “Eagles’ Nest of the High Plains.” Circling the room are more uniforms, pictures and artifacts.

Opposite the entrance is a gateway to a compound full of military history.

Residing there are the half-track, a military crane, a truck, the B53 nuclear bomb case, and the B-25 bomber. Across the street in a compound next to the Carmichael-Whatley Funeral Home are two additional aircraft, the F-4E Phantom represents the aircraft which Pampian Jimmy Ayres was piloting at the time he was shot down during the Vietnam War and the F-105D which actually saw service in Vietnam. The HMMWVs are also

parked in this enclosure.

Freedom Museum USA is one of the premier military museums in the Texas Panhandle. Located at 600 N. Hobart in Pampa, Texas, it is within easy reach of anyone traveling through this area. Museum hours are Tuesday through Saturday from Noon until 4:00 p.m. Special tours can be arranged by calling 806-669-6066.

If you are just passing through or are new to the area and have not yet visited the Freedom Museum, please do so. If it has been a while since your last visit, please stop by and enjoy the new acquisitions and updated exhibits.





Photos courtesy of Della Moyer

## White Deer Land Museum

The White Deer Land Museum opened in May 1970 with only first floor available to the public. The second floor would open 5-7 years later.

When the Land Company used the building they only needed an office. Most of the other rooms were rented out. Pampa's fourth post office was located on the first floor and at one point the Holy Souls Catholic Church met in the largest room.

There have been dentists, abstractors, barbers, attorneys, and many other professional people who have used both floors for office space. Now we have some

34 rooms, large and small, filled with artifacts.

Since then there have been three major additions. First, the Holland Wing was added to the museum in the early 1990's. Second, the Red River War Wing was added in the 2000s. Our newest addition, the N Bar N, opened February 14, 2020. The space is multipurpose and will host lectures, art exhibits and many other educational and cultural events.

With 2021-2022 school year kicking off the Freedom Museum USA, Woody Guthrie Folk Music center and the White

Deer land Museum has student field trip bookings from Pampa, Wheeler, Amarillo, and Busland.

We would like to thank everyone involved in the growth and success of our amazing museums in Pampa. The White Deer Land Museum's hours have returned to our normal pre-COVID schedule.

Tuesday-Friday 10:00am-3:00pm

Saturday 9:00am-5:00pm

Please feel free to contact us at: [WDLMUSEUM@graycch.com](mailto:WDLMUSEUM@graycch.com)

By Phone at (806) 669-8041





# UNDERWOOD

*Representing the best  
for more than 100 years*

With more than 58 years of combined experience, Ken Fields (46) and Bryan Guymon (12) provide broad-based legal services for Pampa and the Texas Panhandle.

- Agriculture
- Business and Corporate
- Labor and Employment
- Estate Planning and Probate
- Family
- Immigration
- Litigation
- Municipal
- Oil, Gas and Minerals
- Public Education
- Real Estate
- Renewable Energy



[www.uwlaw.com](http://www.uwlaw.com)





# Woody Guthrie Folk Music Center

Photos courtesy of Della Moyer



**“YOU CAN'T MAKE  
EVERYONE HAPPY.  
YOU'RE NOT CHEESE.”**

- Anonymous -



P.O. Box 1246 - Perryton, TX 79070  
[watongacheesefactory.com](http://watongacheesefactory.com)

In 1929, 17-year-old aspiring singer/songwriter Woody Guthrie arrived in Pampa from Oklahoma at the behest of his father, an Oklahoma businessman down on his luck and working in Pampa to pay off debts. Guthrie arrived quite accomplished playing the harmonica and quickly acquired an amazing talent with the fiddle and guitar while in Pampa.

He became a determined musician with little interest in the conventions of rural Panhandle life, spending more time reading in the local library than attending school, dropping out of Pampa High before completing his final year. In 1933, At 21, he married Mary Jennings and worked at jobs

in Pampa while honing his musical skills. Guthrie and his wife, Mary, had three children in Pampa: Gwen, Sue and Bill. In 1937, Guthrie left Pampa behind, joining the throngs of Midwesterners driven from farmlands across America by the advent of the Dust Bowl and working their way west to California in the hopes of a better life.

Guthrie, considered an icon of American folk music, authored the nation's folk anthem "This Land is Your Land" among other distinctly American classics. Guthrie may have left Pampa, but Pampa never quite left Guthrie. Pampa locals Thelma Bray and Glenna Lea Miller established the Woody Guthrie Folk Music Center in



1991.

Housed in Pampa's historic Harris Drug Store, one-time Guthrie employer, the Center serves as musical venue for live events throughout the year and a museum of relics that chronicle Woody's life and music.

The Woody Guthrie Folk Music Center strives to keep Woody's words and music alive and to provide a place for the public to visit a little part of Woody's world.

Anyone may come there to learn about, talk about, sing about and add to the legacy of Woody Guthrie.

The Center has a variety of books, recordings, drawings and pictures from Woody's life. For those who might desire to

play and sing, the Center is open on Friday nights for jams, stories and fellowship.

These evenings are open to the public and anyone is welcome to pull up a chair to listen or to visit. The hours are Tuesday through Friday, 10am until 5pm and 6pm until 8:30pm on Friday nights. For visits outside these hours you may call Mike at 806-664-0824.



**A Serene Setting,  
A Trusted Family Business,  
A Compassionate and  
Personalized Touch...**

*Cremation • Memorials • Funeral Services*



600 N Ward, Pampa  
806-665-2323

[Carmichael-Whatley.com](http://Carmichael-Whatley.com)

203 S 3rd St, Canadian  
806-323-6431

[Carmichael-WhatleyofCanadian.com](http://Carmichael-WhatleyofCanadian.com)

*Serving families in the Pampa area since 1965*

**Mary Ellen & Harvester Church of Christ**  
[www.mehcofc.org](http://www.mehcofc.org) • 1342 Mary Ellen • 806-665-0031



*Sunday Bible Classes  
9:30 a.m.  
Sunday Morning Worship  
10:30 a.m.  
Sunday Evening Worship  
5 p.m.  
Wednesday Worship  
7:00 p.m.*

We would like to welcome you to get to know the Church of Christ, which is true non-denominational Christianity. For us, every act of Worship is simple and comes directly from the New Testament and everyone participates in every act of Worship. The most important event and the high light of our week is when we remember the great sacrifice Jesus made by participating in taking **The Lord's Supper** every Sunday (Acts 20:7). We all sing "Acappella" or "without instruments" as we make melody in our hearts to the Lord. (Ephesians 5:19) We all **Study God's Word** together as the preacher brings a message from the Bible (1 Corinthians 4:17). We all **Give to God** from what He has so richly blessed us (1 Corinthians 16:1-2). And equally important, **We All Pray** together (Acts 12:5). We would love to have you join us for Worship and witness simple New Testament Christianity. Remember, "**The churches of Christ send greetings**" (Romans 16:16).

*Buh-Bye* Boring

The new you is waiting.



**HAIRCUTS . COLOR  
PERMS . MANICURES  
PEDICURES . ACRYLICS**

**A Full-Service  
Family Salon**  
men • women • kids

**SHEAR ELEGANCE**  
**111 WEST FOSTER**

**REGINA WOODS & DEBRA SCOBEE**

**669-1901**

**662-4267**



**ACE**®

***Hardware***

**MORTON LUMBER CO.**

**1404 W. Wilson - Borger, TX**

**273-2380**

**Mon-Fri 7:30a-8:00p Sat 8:00a-6:00p Sun 12-6**

# Pampa Youth and Community Center, a place for all to work up a sweat



File photo

Above, from left, Elizabeth Ramirez, Jimmy Hicks and Stefanie Turner.

By JOHN LEE

pampanewseditor@gmail.com

Twitter: @jcl1987

The Youth Center first opened its doors in 1960 and has been overseen by a very involved Board of Directors with many members who have served for several decades, including Dr. Jay Johnson.

The Youth Center is full of different things to do, you can swim, play basketball, take spin classes or lift weights and even more.

“In the early 1970s the area for weights was added,” Johnson said. “Mid-1970s we decided to enlarge the men’s dressing area and then a few years later we added the ladies dressing area.”

The Youth Center has four racquetball courts, a 25-yard swimming pool, saunas, hot tubs, locker rooms, a carpeted gym with high intensity cardio equipment, Jazzercise classes (housed at the facility), HIIT (High-intensity interval training) classes, a

full-sized basketball court, spin cycles, water aerobics, two indoor tennis courts and a walking/running track.

All of these amenities are included in the variety of memberships the Youth Center offers. The Youth Center also offers all-day passes for \$6.

Jimmy Hicks, who became director in 2018, said his goal is for the Youth Center to be a safe-haven for everyone in the community.

“What I try to do is to make this a safe-haven for the young, teenagers, middle-aged, elderly and anyone who comes and works out,” Hicks said. “It’s a social setting. Some people just come to be around other people.”

The Youth Center was founded as a safe place for children to play games and spend time. But as it grew, it became a place for all.

“The senior citizens are free to enter and walk the track,” Johnson said. “We have invested a lot of money into our equipment here, we

have everything from free weights all the way to weight machines.”

The Youth Center doesn’t want to be compared to the large chain gyms such as Gold’s Gym in Amarillo, where the more jockish athletes tend to workout.

“Last thing I want is for someone is to be intimidated,” Hicks said. “When they walk in the door there is no one looking down on you. It’s more ‘Hey, how are you doing? Come on in.’”

Pampa Youth and Community Center is an organization for the people and ran by the people, the center was

created by locals and is still ran by locals to this day.

“If anyone has any questions about us, just come in or give us a call or stop in for a tour and see if it will work for you. We have something for everyone. We would love to make you a new member today and I encourage anyone who is interested to come and take a look at us. We are very blessed to be able to have this building and I hope it can bless you as well,” Johnson finished.

Pampa Youth Center is located at 1005 West Harvester Avenue and you can contact them at (806) 665-0748.



At the Pampa Youth & Community Center you will find a wide variety of exercise options available to help you get or stay in shape!

## Features at the PY&CC

- Two Tennis Courts
- Two Racquetball/Handball Courts
- Two Basketball Courts
- Weight Lifting Room
  - Free weights
  - Cybex weight machines
- Cardiovascular Room
  - Treadmills
  - Summit Trainer
  - Arc Trainers
  - Airdyne Bikes
  - Stationary Bikes
  - Recumbent Bikes
  - Rower
- Indoor Running/Walking Track
- Indoor Swimming Pool
- Ladies Workout Room
- Whirlpools & Saunas
- Programs & Lessons
  - Swimming Lessons
  - Tournaments (Dodgeball, Basketball, Power Lifting, Cornhole, etc)
  - Youth Activities (Dive-in Movies, Kid’s Camp, Tournaments, etc)
  - Fitness Classes (Zumba, Aqua Zumba, HIIT, Yoga, Water Aerobics)
  - Spin Class
  - Crossfit Pampa- Beginner to advanced



Pampa Youth and Community Center  
 1005 West Harvester  
 P.O. Box 1164  
 Pampa, Texas 79066-1164  
 806-665-0748

Low Monthly Fee!





# Pampa H2O Water Park

## Aquatic Center Entry Fees

Infant/Toddler (ages 3 and Under) - Free Admission

Youth (ages 4 – 17) - \$6 per day

Adult (ages 18 and Up) - \$7 per day

Aquatic Center Season Passes

Individual Season Pass - \$150+ tax per season

Individual "10 Visit" Pass - \$50 + tax

Individual "20 Visit" Pass - \$100 + tax

Family Season Pass (family of five) - \$350 + tax per season

If you are interested

in reserving a pavilion or the entire park, call for details. They can be reached at 806-665-5730.

The following is information taken from their website.

The mission of the City of Pampa Outdoor Family Aquatic Center is to provide a safe, fun recreational aquatic experience for the citizens of Pampa as well as tourists from around the area.

We are really excited about our Facebook page. Please go like us

there as we give away two-day passes every time we reach another 500 followers. Also great spot for us to get information out to the public!

## General Rules

No outside food or drinks allowed in park.

Must be 48" to ride the slides.

We do not allow outside inner tubes. Only toddler size flotation devices.

No life jackets, jewelry or metal allowed on the slides.

No flotation devices allowed on slides or diving boards, individuals must be able to swim.

Parents are not allowed to take children down the slide.

Three people per platform on our slides.

All children not potty trained need to have on a swim diaper.

If child can not swim please do not leave them unattended.

See website for dates and hours: <https://bit.ly/3fzetO6>



# Pampa Country Club: Almost 100 years of rich history

By JOHN LEE

pampanewseditor@gmail.com

Twitter: @jcl1987

The Pampa Country Club is located off Harvester Street near Loop 171 and today is still considered by many one of the finest golf facilities in the Texas Panhandle.

Organized in 1928 with \$12,000 in stock and shares selling for \$200 each. The first certificate was issued to M.K. Brown on April 23, 1928 according to an article by the White Deer Land Museum's long-time curator Eloise Lane.

Lane's article states in the mid-1930s, the clubhouse was built and paid for in cash and would leave no debt. The size of the clubhouse continued to grow as the population of Pampa, and thus the club's membership, grew.

Pampa Country Club hosts a wide range of tournaments from the Hart Warren Top O' Texas Golf Tournament, Tri-State Seniors and one half of the Pampa Partnership.

The Country Club also has special buffets throughout the year that is open to the public. For dinner, they also have a full menu available to customers.



**JOIN THE PAMPA COUNTRY CLUB**

"AN OASIS IN THE PANHANDLE"

**PAMPA COUNTRY CLUB**

The Pampa Country Club offers one of the best 18-hole golf courses in the Texas Panhandle along with a full service bar and restaurant for a wonderful dining experience. In the summer months, we offer a swimming pool with snack bar. We also have Sunday buffets in the main dining room and offer full clubhouse facilities for banquets, weddings and receptions.

**1765 E. HARVESTER (806) 669-3286**

Drop by or call for more information

Ask us about our "New Member" Special **\$150** per month for the first year!



# Hidden Hills Golf Club, 30 years of golfing in Gray County

By JOHN LEE

pampanewseditor@gmail.com

Twitter: @jcl1987

Hidden Hills Golf Course opened in 1990 at its location just north of Pampa on State Highway 70.

Brian Brauchi, who became the general manager of the course in December 2019, said the course offers a unique design and layout that flexes the Texas Panhandle's characteristics.

"It has a different layout," Brauchi said. "We have true,

link-style golf course that's unique. It's a cool-season golf course with hills and not very many trees. It's a different experience from what most people are used to."

Designed by Ray Hardy and owned by the City of Pampa, it continues to see improvements to various areas.

The golf course also upgraded their fleet of golf carts in 2019.

"All of these have GPS capabilities," Brauchi said. "It gives us some control to set geofences to keep people out

of areas they aren't supposed to be in without spending extra money on somebody being a marshal.

"It's a benefit to the golfer in that they already have the GPS already on the cart so when they pull up to the ball it shows them the distance to the green."

Brauchi said Hole No. 9 is one of the toughest holes on the course as you're shooting up hill to get to the green.

"It's a long Par 4," Brauchi said. "It comes back up the hill to the pro shop and it's

got about a 30 to 40-foot rise from the bottom of the fairway to the green."

Featuring a shot over water, Brauchi said the most unique hole is No. 13.

"It takes a lay-up shot off of the tee box and you have a carry over water and an uphill shot onto a green that slopes from back to front," Brauchi said.

For more information, visit [www.hiddenhillsgolfclub.com](http://www.hiddenhillsgolfclub.com) or call 806-669-5866.

COME EXPERIENCE THE HILLS



**Hidden Hills  
Public Golf Course**

**1000 HIDDEN HILLS DR. • PAMPA, TEXAS 79065  
GOLF SHOP (806) 669-5866**

## We're With You



Dustin Webb



Janice Monda



Norma Tonche

**Auto • Home • Life**

Call today for a free consultation and rate quote, and be sure to ask about our money-saving umbrella policies!



**Allstate**  
You're in good hands.



222 North Cuyler | Pampa, TX | 806-665-0503



# Clubs and Services

## *In the arts:*

- High Plains Cruisers- kahammer43@gmail.com
- Pampa Community Concert Association- glennette@goodeangus.com
- Pampa Radio Operated Plane Society - www.propsclub.org, e-mail pampapropsclub@yahoo.com.

## *For Veterans:*

- VFW Post 1657- 105 S. Cuyler, P.O. Box 2684, Pampa, Texas

## *For Seniors:*

- Pampa Senior Citizens Center- 500 W. Francis, Pampa, Texas 806-669-7414.
- Southside Senior Citizens Center- 438 W. Crawford, Pampa, Texas, 79065
- Pampa Meals on Wheels- 302 E. Foster Ave, Pampa, Texas 79065, 806-669-1007.
- GrayCares Living at Home- 511 N Hobart St, Pampa, Texas 79065, 806-688-7109.

## *Social Clubs:*

- Rotary - Every Wednesday at 12 p.m. at the Pampa Chamber of Commerce, 200 N Ballard St, Pampa, TX
- Lions Club- Every Thursday at noon in the basement of the First United Methodist Church, 201 East Foster, Pampa, Texas, 79065
- Kiwanis- Every Friday at noon at Pampa Country Club, 1765 E Harvester Ave, Pampa, TX 79065.

## *Social Clubs:*

- Top O' Texas Republican Women's Club- 2434 Cherokee Pampa TX 79066 (806) 669-2206
- Altrusa International of Pampa- Every other Tuesday at 6 p.m. at the Pampa Chamber of Commerce 200 N Ballard St, Pampa, TX
- Pampa Desk and Derrick Club- Meets every fourth Tuesday and during the pandemic they have met at someone's house. For more information call Carol Cofer- 806-669-3108.

**BILL ALLISON**  
EST. 1976  
AUTO SALES

Call, come by or check  
[www.billallison.com](http://www.billallison.com) for more!

We are committed to providing quality cars at great prices, and to serving our customers with pride & integrity.



1200 N. Hobart St., Pampa, TX • 806-665-3992



# The News

*Is Just the Beginning*



**Subscribe to  
The Pampa News  
for just**  
**\$9.50** *a month*

**Your Community...Your Family...**  
**Your Interests...Your Home...Your World...**  
*It's All a Part of Your Local Newspaper!*



## The Pampa News

806.669.2525 | 403 W. Atchison | [www.thepampanews.com](http://www.thepampanews.com)



# Top O' Texas Rodeo gearing up for 74th year



By JOHN LEE

pampanewseditor@gmail.com

Twitter: @jcl1987

The Top O' Texas Rodeo Association held their 74th run after missing 2020 due to the COVID-19 pandemic.

"The excitement for this rodeo is just over the top," TOTRA President Cindy Kempf said. "We missed having a rodeo last year and we're just elated to do this again and are so happy to be back."

The event was held on Thursday, Aug. 12 at 7 p.m. with their slack performance open to the pub-

**Photo courtesy of Della Moyer**

lic. There is no charge for the performance.

On Friday, Aug. 13, there was a free barbecue for ticket-holders at 5:30 p.m. ahead of the rodeo at 7 p.m.

"During the BBQ, the Fifth Annual Mutton-Bustin' extravaganza will take place," Kempf said. "During the rodeo we will have trick riders Summer Boyd and her daughter Emmie and a wild cow race, which is new."

The rodeo will also have a Junior American Qualifier for 10-13 year olds that is open for anyone

who wants to enter featuring mini-bulls, mini-broncs and walk-and-trot bulls.

Justin Russell of Wolf Creek Rodeo is the stock contractor for the rodeo.

"He does an awesome job," Kempf said. "He goes out and brings us top-notch stock, which provides us top-notch cowboys and cowgirls."

The rodeo is a two-day event and after each running there will be a dance.

"Darren Morrison will be playing Friday," Kempf said. "On Saturday, we will have the Rodeo Parade and the second rodeo performance at 7 p.m."

Saturday, August 14, was loaded with fun for everyone when the rodeo parade kicked off at 10:30 a.m.

Police Chief Lance Richburg is the 2021 Parade Marshall. Forming at the M. K. Brown parking lot, the parade will move south on Somerville to Francis, east on Francis to Cuyler, south on Cuyler to Atchison, east on

Atchison to the train depot where it will disband. This parade always provides lot of interesting and unusual sights. Engraved trophies will be awarded to the winners of each division. Entries are now being taken for anyone interested in participating in the parade. Entries will be accepted up until parade time.

The second night features the finals of the Mutton-Bustin' and The

**TOTRA** cont. on page 38



# What's to do?

## TOTRA

Continued From Page 36

Teague Brothers Band performing at the dance.

The rodeo will be held at the Top O' Texas Rodeo grounds on Highway 60 at 1509 E Frederic, which have seen some improvements.

"We went in and re-did the box seats and they are all painted," Kempf said. "They (TOTRA) have been working hard on it. There's a lot of maintenance and up-keep. But I think people will like it, they've done a good job."

The rodeo sees a lot of volunteer organizations aiding in operations in-

cluding, but not limited to, Gray County 4-H, Hoover Volunteer Fire Department, Briarwood Church and Lefors High School cheerleaders.

For more information on the rodeo, call 806-662-2873.



Photo courtesy of Della Moyer



## Deep in the Heart of Texans.

When it comes to protecting Texas homes, Germania Insurance understands Texans' needs. We live in the same communities and share the same concerns as our neighbors. For their home and their automobile and even their families, Texans look to Germania Insurance to be there when they need us most.

Germania is no ordinary insurance company. We've been insuring Texans' homes for over 110 years. From El Paso to Texarkana and McAllen to Amarillo, we have agents all across the Lone Star State that understand the needs of our neighbors and the communities in which we live. We have competitive rates, discount options and exceptional claims service, 24/7.

Discover for yourself why Germania is  
The Insurance Texans Trust.



**Taylor & Miller  
Insurance Agency**  
120 East Browning  
806-669-3062

**Germania  
INSURANCE**  
HOME • AUTO • LIFE  
www.GermaniaInsurance.com

## Celebrating 39 years in Pampa

Certified A/C Repair • Fleet Maintenance

### STOKES RADIATOR

We Repair All Kinds of  
**RADIATORS**

Auto • Agriculture • Oilfield • Brakes  
Shocks • Belts & Hoses • Thermostats

**Automotive-Industrial**

**806-665-0190**

John & Carolyn Stokes  
Se Habla Español

Local Pickup & Delivery  
**525 W. Brown**  
Hwy 60-Pampa, TX

### Stokes Muffler

**525 W. BROWN ST. HWY 60  
PAMPA, TEXAS 79065**

**806-665-0190**

**Custom Exhausts**

John & Carolyn Stokes





# Pampa Regional Medical Center Interventional Cardiology

## Coronary Artery

*Interventions and Stents*

## Management of

*Congestive Heart Failure*

## Treatment of

*Emergency Heart Attack*

*Peripheral Arterial Disease*

*Varicose Veins*



*Dr. Kelvin Akhigbe & Karla Fernandez NP-C*

[www.prmctx.com](http://www.prmctx.com)

**806-665-0801**

*Se Habla Español*



**ONE STOP REMODELING**  
HOME DESIGN CENTER



**WE HAVE THE VISION  
AND EXPERIENCE TO  
MAKE YOUR DREAMS  
COME TRUE!**

**SHOWROOM IS NOW  
BETWEEN BURKE'S  
OUTLET & OSAKI**



## Pampa's Premier Rental Company

We own and operate over  
150 mid to high end homes,  
duplexes & apartments!

Office is between Burke's  
Outlet & Osaki at The Shops  
at Cornerstone

**2545 PERRYTON PARKWAY • (806) 665-0995 • M-F 9AM-5PM , SAT 10AM-1PM**

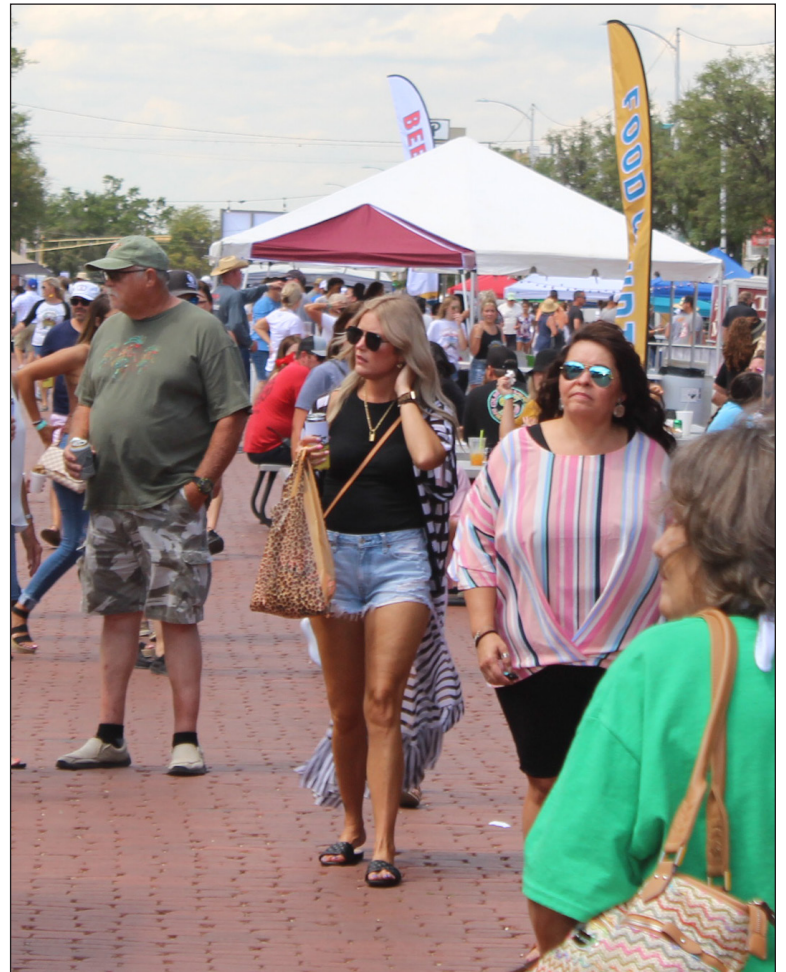


# Celebrating the first annual PampaFest!



Photos by John Lee

Above left, Chris and Mandy Spurgeon of the Salty Heifer, one of the many food trucks at the event. Above right, a family enjoys the Build-A-Bear vendor. Below left, Zac Wilkerson Band performs for the crowd. These are scenes from the first ever PampaFest held in August.





# Celebrating the first annual PampaFest!



Photos by John Lee

Above left, members of the Pampa Patriots baseball team Cy LeBlanc, Kale Ruth, Kooper Preston, Gage Gamblin, Dace Massey. Above right, Cooder Graw headlines PampaFest. Below, John Tripplehorn, Pat Montoya and VFW District Commander Benny Guerrero for the Pampa VFW. These are scenes from the first ever PampaFest held in August.





41

# Sculpture Tour of Pampa



This Land is Your Land



Lovett Memorial Library Statue



Loch Ness Lizard



Art History Wall - A Preview

Photos by The Pampa News

"This Land is Your Land" is a 150' wide by 10' tall sculpture that represents the chorus of Woody Guthrie's classic song. Lovett Memorial Library statue; She opens her mouth with wisdom, and on her tongue is the law of kindness (Proverbs 31:26). The Loch Ness Lizard was constructed in 1991-1992 by the metal trades class with recycled materials. The Art History Wall is located west of the MK Brown Civic Center and has 16 different faces dedicated to the Texas flag, area cattle brands, the agriculture and petroleum industries, early American lifestyles and WWII Air base.



# Pampa Church Directory

42

## ASSEMBLY OF GOD

PAMPA FIRST ASSEMBLY OF GOD  
1020 Love St., 806-665-5941

## BAPTIST

ALANREED FIRST BAPTIST  
McLean, 806-256-5331

BIBLE BAPTIST  
500 E. Kingsmill Ave.,  
806-669-7830

CALVARY BAPTIST  
900 E. 23rd Ave., 806-665-0842

CENTRAL BAPTIST  
513 E. Francis Ave., 806-665-1631

CORNERSTONE BAPTIST  
2410 W. 23rd Ave., 806-669-6509

FELLOWSHIP BAPTIST  
622 E. Francis Ave.,  
806-669-1652

FIRST BAPTIST  
203 N. West St., 806-669-1155

FIRST BAPTIST  
206 E. 1st, McLean  
806-779-2175

FIRST BAPTIST CHURCH OF LEFORS  
315 E. 4th St., Lefors  
806-835-2222

GRACE BAPTIST  
824 Barnes St., 806-669-7967

HIGHLAND BAPTIST  
1301 N. Banks St., 806-665-3300

HOBART BAPTIST  
1100 Crawford St., 806-669-3212

IGLESIA BAUTISTA EMMANUEL  
1021 Barnes St., 806-665-4330

LIGHTHOUSE BAPTIST  
326 Rider St., 806-665-0262

MACEDONIA BAPTIST  
441 Elm Ave., 806-665-4926

NEW HOPE BAPTIST  
404 Harlem St., 806-665-4044

PRIMERA IGLESIA BAUTISTA  
1541 Hamilton St.,  
806-665-8347

## BIBLE

FAITH BIBLE  
205 N. Cuyler St., 806-688-9266

## CATHOLIC

ST. VINCENT DE PAUL CATHOLIC  
810 W. 23rd Ave., 806-665-8933

## CHRISTIAN

Hillside Christian Church-  
Pampa Campus  
1633 N. Nelson St., 806-669-3225

HI LAND CHRISTIAN  
1615 N. Banks St., 806-669-6700

## CHURCH OF CHRIST

CHURCH OF CHRIST  
500 N. Somerville St., 806-663-02163

CHURCH OF CHRIST  
1342 Mary Ellen St., 806-665-0031

MCLEAN CHURCH OF CHRIST  
315 W. 4th St., McLean  
806-779-2182

SOUTHSIDE CHURCH OF CHRIST  
11925 W. McCullough St.,  
806-669-3912

KENTUCKY AVENUE CHURCH OF  
CHRIST  
1612 W. Kentucky Ave.,  
806-665-2572

## EPISCOPAL

ST. MATTHEWS EPISCOPAL  
727 W. Browning Ave.,  
806-665-0701

## INTER-DENOMINATIONAL

BRIARWOOD CHURCH  
1800 W. Harvester Ave.,  
806-665-7201

## JEHOVAH'S WITNESS

JEHOVAH'S WITNESSES  
2300 Crescent Dr., 806-677-4757

## LUTHERAN

ZION LUTHERAN  
1200 Duncan St., 806-669-2774

## METHODIST

FIRST UNITED METHODIST  
201 E. Foster Ave., 806-669-7411

ST. MARK CME  
406 Elm Ave., 806-669-6743

ST. PAUL UNITED METHODIST  
511 N. Hobart St., 806-665-8951

UNITED METHODIST  
219 Gray St., McLean  
806-779-2337

## MORMON

CHURCH OF JESUS CHRIST OF  
LATTER-DAY SAINTS  
411 E. 29th Ave., 806-669-2967

## NAZARENE

CHURCH OF THE NAZARENE  
500 N. West St., 806-669-3144

## PENTECOSTAL

UNITED PENTECOSTAL  
610 Naida St., 806-665-3676

## PENTECOSTAL HOLINESS

PENTECOSTAL HOLINESS  
1700 Alcock St., 806-665-8192

PAMPA CHURCH OF GOD  
1123 Gwendolyn., 806-680-6846.

## PRESBYTERIAN

FIRST PRESBYTERIAN  
525 N. Gray St., 806-665-1031

## SEVENTH-DAY ADVENTIST

SEVENTH-DAY ADVENTIST  
421 N. Ward St., 806-665-4492

## OTHER

CAROL PEET MINISTRIES  
1717 N. Russell St., 806-665-8543

ALBERTA HELTON MINISTRIES  
13905 W. I-40  
McLean, Texas

806-663-2830  
CARPENTER'S CHURCH  
639 S. Barnes, 806-665-4711

NEW HORIZON COMMUNITY  
FELLOWSHIP  
711 E. Harvester Ave.,  
806-440-4240

CROSSROADS MINISTRY  
603 Commerce St., McLean  
806-779-3100

IGLESIA NUEVA VIDA  
1200 S. Sumner St., 806-665-8331

FULL ARMOR FELLOWSHIP  
1733 N. Banks St., 806-669-6915

TRINITY  
401 W. Railroad Ave., McLean, 806-  
779-3207

TRINITY FELLOWSHIP  
2225 N. Hobart St., 806-665-3255  
Redeemer Pampa  
225 N. Cuyler, 806-486-2561



**EVERYTHING AUTOMOTIVE!**

*SINCE 1960*



- Cars, Trucks & Oilfield Equipment
- Auto Lock-Outs • Parts & Auto Repair
- Plus, So Much More!



**1432 S. BARNES • 806.669.3481**  
**TOWING • PARTS • AUTO SALES**



**DR. SPARKMAN   DR. LYONS   DR. CLIFTON**

**2020 & 2021**  
**Best Orthodontist**

*Sparkman*  
ORTHODONTICS

3000 Perryton Parkway, Pampa  
(806) 665-0935 • [SparkmanOrthodontics.com](http://SparkmanOrthodontics.com)



**ITeck Managed Services, LLC.**  
**YOUR MANAGED SERVICES PROVIDER**

**REMOTE MONITORING • WEB & EMAIL HOSTING • SPAM FILTERING • WEB DESIGN • OFF-SITE BACKUP SOLUTIONS • VIRUS REMOVAL • HARDWARE UPGRADES • PC REPAIR • WIRELESS NETWORK DESIGN & IMPLEMENTATION • NETWORK SECURITY DESIGN & IMPLEMENTATION • I.T CONSULTING • AND MORE**

**516 W. KENTUCKY**  
**(806) 665-0485**

ITeck Managed Services is an IT support company in Pampa, TX, serving the Texas Panhandle since 2013. Our experienced managed IT service providers can help you keep your business running smoothly for a reasonable monthly rate.



## Pampa, TX Top 10

10. HIDDEN HILLS GOLF COURSE
9. KING'S ROW FAMILY HAIR CARE
8. THE LIZARD STATUE
7. PAMPA H2O AQUATIC CENTER
6. TIKI HUT SNO CONES
5. RECREATION PARK
4. THE FREEDOM MUSEUM
3. BILL ALLISON AUTO SALES
2. The Coney

**1. ALLISON AGENCY** *Insuring Texans Since 1981*  
 HOME AUTO LIFE  
 1827 N. Hobart St. 806-665-6815

TOP TEN LIST WAS COMPILED AND RANKED BY THE OWNER AND STAFF OF ALLISON AGENCY

**Allison** (806)  
**Auto** 665  
**Rental** 3395

1827 N. Hobart  
 Pampa, TX  
 79065



*Your Total  
 Plumbing Store*

## CHIEF PLASTIC PIPE & SUPPLY INC.

1237 SOUTH BARNES • 806-665-6716

- Rheem water heaters
- PEX Pipe
- PVC Pipe
- PVC, Poly and Steel Fittings
- Septic Tanks

*Add Beauty & Elegance To Your Home  
 Inside...& ...Out*

## Trust our 20 Years of Experience in Business

Southwest Collision offers outstanding auto collision services performed by our certified I-CAR technicians. We offer FREE estimates and insurance claims as well.

We look forward to taking care of your auto glass repairs and installations as well as minor dents, dings, and hail damage. Trust our locally owned and operated company.

**Paintless  
 Dent  
 Repairs**

**Auto Body  
 Repairs**

**All Auto  
 Glass Repairs**

## Southwest Collision

2525 W. HWY. 152 806-669-9997



FREE  
ESTIMATES

**Anthony's**  
Floor Care



2210 Perryton Parkway • Pampa  
806-419-1090  
106 W. 10th • Borger • 806-273-2467

**CARPET • TILE • WOOD • VINYL • LAMINATE**



*Over 30 Years Experience*

*Don't miss out on the Best Prices,  
Best Installation, & Best Service!*



# PAMPA FACTS

**LOCATED IN GRAY COUNTY, TEXAS, PAMPA HAS A POPULATION OF 18,401. GRAY COUNTY ITSELF HAS A POPULATION OF 23,043.**

### Other facts about Pampa:

**Elevation:** 3,234 feet above sea level

#### Compared to:

- Amarillo-** 3,601'
- Oklahoma City-** 1,201'
- Albuquerque-** 5,312'
- Dallas-** 430'
- Denver-** 5,280'

#### Distance from:

- Amarillo-** 56 miles
- Oklahoma City-** 220 miles
- Albuquerque, N.M.-** 344 miles
- Dallas/Forth Worth-** 356 miles
- Denver, Colo.-** 443 miles
- Lubbock-** 179 miles
- Austin-** 472 miles

### Climate in Pampa (from U.S. Climate Data)

#### Average temperatures:

- Highs-** Jan.- 49°F, Feb.- 52°, March- 61°, April- 70°, May- 78°, June- 86°, July- 91°, Aug.- 90°, Sept.- 82°, Oct.- 71°, Nov.- 60°, Dec.-49°

- Lows-** Jan.- 23°F, Feb.- 26°, March- 33°, April- 41°, May- 51°, June- 60°, July- 66°, Aug.- 65°, Sept.- 57°, Oct.- 45°, Nov.- 33°, Dec.- 24°

**Average rainfall:** Average annual rainfall is 23.28 inches with the wettest months being June (3.66 inches), May (2.99) and Aug. (2.76)

#### Transportation:

Pampa sits right on U.S. Highway 60 and has Texas Highways 70 and 152. Interstate 40 is 27 miles south of Pampa.

BNSF Railroad provides piggy-back service to the area with 55 trains daily.

Private air service is available locally at Perry Lefors Airfield. Commercial flights are available through Rick Husband Amarillo International Airport.

#### Utilities

- Electricity:** Xcel Energy 800-895-4999
- Gas:** Atmos Energy 888-363-7427

#### LP Distributors:

- Clark C Propane-** 806-665-4018
- Centergas Fuels-** 806-665-7235

#### Water/Sewer/Trash

City of Pampa- 806-669-5810

#### Telephone/Internet

- AT&T-** 800-288-2020
- Cable One-** 888-216-5524
- Resound Networks-** 800-806-1719
- NTS Comm.-** 800-658-2150

#### Cell Phone

- AT&T-** 800-665-0500
- Verizon-** 806-669-3435
- Cricket-** 806-665-0165
- Boost-** 806-419-3292
- Metro PCS-** 806-486-1407

#### Taxes

##### Sales tax

State- 6.25%, City 2.0%

##### Property taxes

- City-** .73 % per \$100
  - PISD-** 1.2384% per \$100 (as of Aug. 2021)
  - Clarendon College-** .05% per \$100
  - County** \$.65086/\$100
- For more information visit [graycad.org](http://graycad.org)

#### Employment and workforce

- Workforce Country-** 7,753
- Radius of Labor Drawing Area:** 60 miles
- Manufacturing employment:** 1,100 (est.)

#### Major employers

Pampa ISD, Pampa Regional Medical Center, Walmart, Texas Department of Criminal Justice, City of Pampa, Hunting-Titan, United Supermarkets, Gray County, Cabot Corporation, G2X, National Oilwell Varco

#### Education

**School districts:** Pampa ISD, Miami ISD, Lefors ISD, Grandview-Hopkins, White Deer ISD

**Higher education:** Clarendon College, Frank Phillips College, Amarillo College

**Private:** Community Christian School, Create-A-Beat Afterschool Arts Program, St. Matthew's Day School, First Baptist Child Development Center, Gray County Latchkey

#### Medical Care

Pampa Regional Medical Center services a population of about 65,000 from the Texas Panhandle and employs roughly 240 staff members. For more information visit [www.prmctx.com](http://www.prmctx.com).

Ambulance service is provided by Emergency Services Foundation of Texas. Air ambulance is provided by Lifestar 2 and is stationed at the hospital.

Pampa also has 12 medical clinics, 3 nursing homes, 1 assisted living center, 2 chiropractic offices, 3 veterinarians, 4 dentists, 2 orthodontists and 2 eye care facilities.



# WE LOVE LOANS



Vehicle Loans



Vacation Loans



RV Loans



Personal Loans



Debt Consolidation Loans



Home Improvement Loans

Subject to Credit Approval



**FirstBank**  
**Southwest**  
FBSW.COM

806.655.2341 • 300 W. Kingsmill