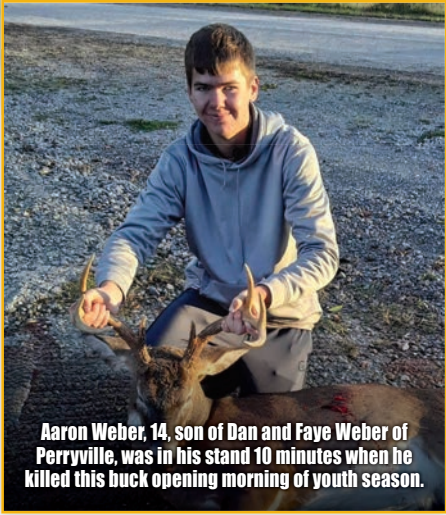


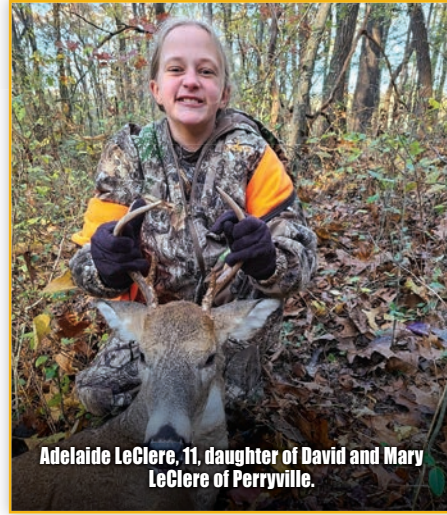
# Fall & Winter HUNTING GUIDE



Aaron Weber, 14, son of Dan and Faye Weber of Perryville, was in his stand 10 minutes when he killed this buck opening morning of youth season.



Adam Marr, 15, of Festus, is the son of Jamie Marr and Jaime Bierk and Susie and Kevin Valleckwith.



Adelaide LeClere, 11, daughter of David and Mary LeClere of Perryville.



AJ Johnson, 14, daughter of Melissa and Rick Johnson of Perryville.



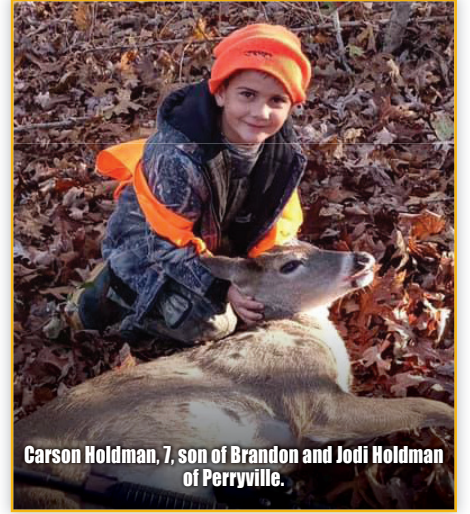
Allison Bierk, 14, daughter of Kyle Bierk of Perryville.



Ally Berkerman, 7, daughter of Stacy and Zac Berkerman, killed this deer on a family farm in Daisy.



Braxton Leible, 8, son of Chris and Kelly Leible of Frohna.



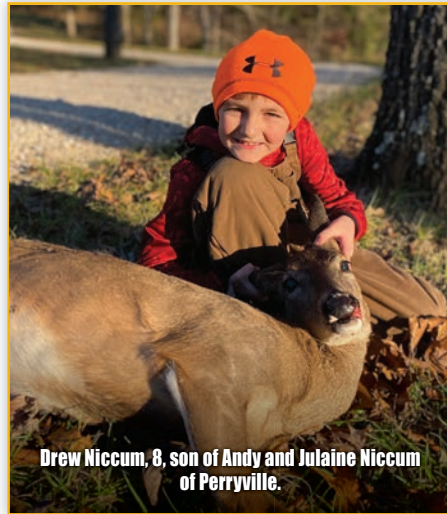
Carson Holdman, 7, son of Brandon and Jodi Holdman of Perryville.



Lucas Winston, 7, son of Courtney Picou of Ozora.



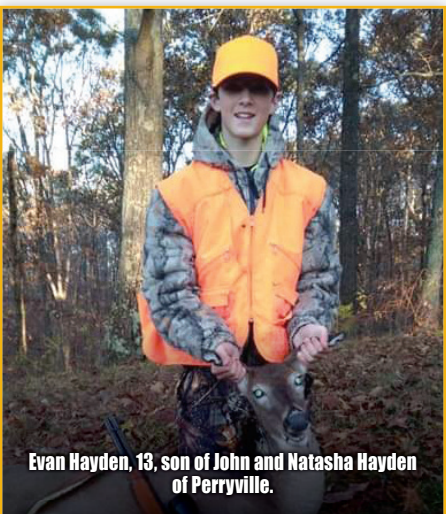
Derek Garza, 13, son of Johnny and Kelly Garza of Perryville.



Drew Niccum, 8, son of Andy and Julaine Niccum of Perryville.



Ethan Hurst, 6, of St. Mary, son of Michael Hurst and April Grindstaff.



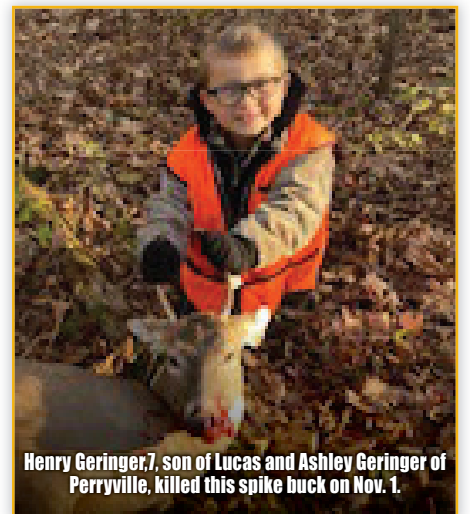
Evan Hayden, 13, son of John and Natasha Hayden of Perryville.



Hadley Schnurbusch, 6, daughter of Blake Schnurbusch and Katie Lukfahr of Perryville killed this deer while hunting with her father.



Hannah Alfermann, 9, daughter of Kaitlin and Ted Alfermann of Smyrna, Tenn., and granddaughter of Bob and Peggy Welker of Perryville.



Henry Geringer, 7, son of Lucas and Ashley Geringer of Perryville, killed this spike buck on Nov. 1.

## Numbers down for early youth portion

MDC experts say harvest total still 'on par' with previous seasons

By Robert Cox  
rcox@perryvilenews.com

Fall firearms season got off to a good start with a successful youth weekend that saw young hunters check nearly 15,600 deer across the state.

In Perry County, hunters aged 6-15 brought down 150 deer, including 62 antlered bucks, 12 button bucks and 76 does, down a bit from last year's total of 180 deer in the fall portion.

Statewide, MDC reported that young hunters checked 15,847 deer during the two-day event, and that the top counties were Franklin with 336 deer, followed by Howell with 324, and Osage with 320.

More locally, Bollinger County youth checked 271 deer, followed by St. Francois County with 145, Madison County with 143, Ste. Genevieve County with 137 and Cape Girardeau with 131.

Last year, youth hunters harvested 18,289 deer during the early youth portion

"This year's harvest total is about on par with the average over the last few years," said MDC Cervid Program Supervisor Jason Isabelle. "Whenever you have a short season portion like the two-day early youth portion, you can expect variability in the harvest total from year-to-year. This year's harvest of about 15,600 deer puts us about in the middle of the range when compared to harvest totals from the past five years."

Perry County conservation agent Chris Doran also called the youth weekend, which ran from sunup on Oct. 31 to sunset on Nov. 1, a success. "I saw some really good pictures of youths that had harvested some big bucks and their first deer," Doran said. "It's an exciting time with youth season."

That excitement can sometimes lead to an error or two, he said, but most are easily rectified.

"I had a few phone calls coming in as far as stuff where they may

have the wrong permit," Doran said. "With this new app stuff, sometimes folks get in a hurry and they click on the wrong permit and then TeleCheck it and then they realize their mistake later."

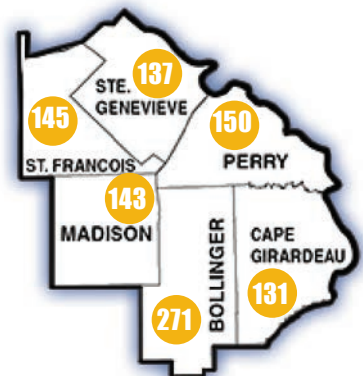
And then there's the "lucky shot" situation.

"It always seems too that we'll have a child that, just luck of the draw, ends up shooting two deer with one shot," Doran said. "It's usually when the deer are kind of crowded around and it's just a lucky shot. We handled a couple of those this year where parents had called in and said, 'Hey, you know, little Johnny shot two deer with one shot. What do we do?' and we handle it from there."

According to Doran, in a situation like that, MDC agents usually let the hunter pick which deer they want, then take the other and donate it to Share the Harvest or directly to a needy family.

The November portion of firearms deer season begins Saturday, Nov. 14, and runs through Tuesday, Nov. 24, followed by the late youth portion from Nov. 27-29.

### Youth deer season



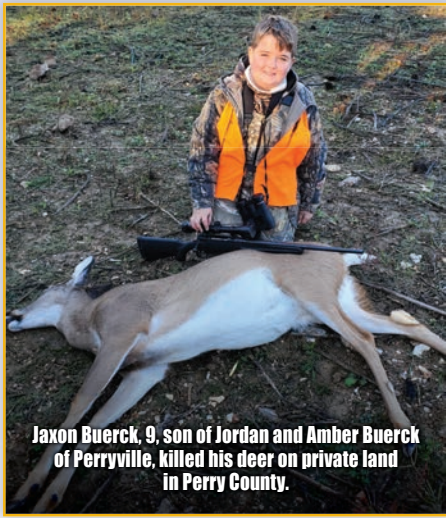
#### STATEWIDE

ANTLERED BUCKS 9,780  
BUTTON BUCKS 1,378  
DOES 4,689  
TOTAL 15,847

#### BY COUNTY

COUNTY	AB	BB	D	TOTAL
Bollinger	123	39	109	271
Perry	62	12	76	150
St. Francois	74	16	55	145
Cape	72	8	51	131
Ste. Gen.	80	12	45	137





Jaxon Buerck, 9, son of Jordan and Amber Buerck of Perryville, killed his deer on private land in Perry County.



Bennett Kassel, 11; Braxton Kassel, 8; and Oliver Kassel, 9, grandsons of Danny and Peggy Leiblie of Perry County.



Katelyn Richardet, 14, daughter of Brian and Lisa Richardet of Perryville, killed this deer in Perry County.



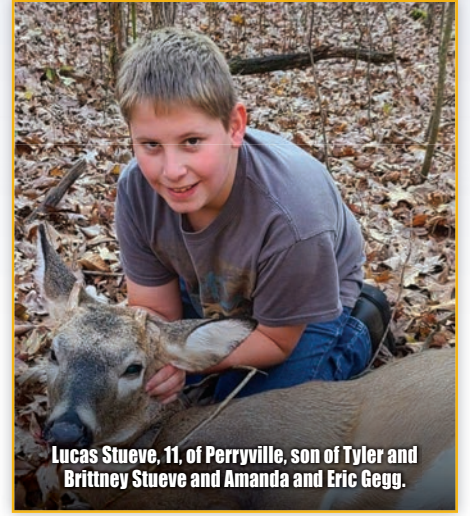
Kinsley Weibrecht, 9, daughter of Aaron & Jennifer Weibrecht of Perryville.



Konnor Hobeck, 14, of Daisy, son of Kyle Hobeck & Ashley Seyer killed this deer on a family farm.



Lexi Johnson, 13, of Perryville, daughter of Melissa and Rick Johnson and Amy Helms.



Lucas Stueve, 11, of Perryville, son of Tyler and Brittney Stueve and Amanda and Eric Gegg.

# Warmer weather should have no effect on hunters

By Justin Hotop

jhotop@perryvillemews.com

Normally on the opening weekend of deer season, hunters across the state have to bundle up in layers to get into their stands. Perry County Conservation agent Chris Doran remembers those days growing up.

"Opening day was one of those times when you had to wear two or three layers," Doran said. "It was definitely cold."

This weekend is not shaping up to be that way.

Saturday's low is expected to be 48 degrees with a high of 62. Sunday is expected to have a high of 65 degrees and a low of 38.

Those temperatures are a far cry

from the temperatures hunters would expect in November, but Doran does not expect to see any change in the amount of deer that will be harvested.

"There have been times that the deer won't move around pretty good and other times where the warmer weather will bring out more hunters," Doran said. "It always turns out to be the same. I don't think there is any rhyme or reason. I would say that it would be an average opening morning."

Generally, colder weather does entice deer to move around more in the woods to stay warm and search for food.

"Like any animal deer are a little bit more frisky when it's cool out then when it's warmer," Doran said. "But

what we've seen with the archery season, we are right on par with year's past and it hasn't really been that cold. That number of hunters that is out there and the deer are about the same every year."

It helps that the deer population in the state has been growing.

"Deer populations in much of southern Missouri have been increasing slowly over time and deer numbers in much of central and northern Missouri have rebounded from the severe hemorrhagic disease outbreak in 2012 that caused a significant decline in deer numbers in many counties," said MDC Cervid Program Supervisor Jason Isabelle.

Isabelle added that deer harvests in the state have also been on an increas-

ing trend since 2013 and MDC expects this trend to continue this year.

"Increased hunter participation as a result of the COVID-19 pandemic is also likely to contribute to a higher deer harvest this fall," Isabelle said. "We saw a significant increase in the number of hunters that pursued turkeys this past spring. If we see a similar increase in hunter participation this fall, it could lead to one of our highest deer harvests in many years."

He added that MDC has steadily increased antlerless deer harvest opportunities in many counties over the last several years in response to increasing deer numbers.

Archery deer hunting opened Sept. 15 and runs through Nov. 13. Archery season then reopens Nov.

25 through Jan. 15, 2021. The November portion of firearms deer season starts Nov. 14 and runs through Nov. 24. The alternative methods portion runs Dec. 26 through Jan. 5, 2021. A firearms antlerless portion runs Dec. 4-6. Youth firearms portions run Oct. 31 to Nov. 1 and again Nov. 27-29.

As in previous years, MDC will be hosting its annual Share the Harvest program, in which hunters may donate their venison to needy families.

Deer taken in a CWD Management Zone — like Perry County — must be tested for Chronic Wasting Disease, and may only be donated to an approved processor that is participating in the Share the Harvest CWD-Testing Program.

PlazaTireService.com | f/PlazaTireService | /plazatireservice

## PLAZA TIRE SERVICE

THE QUICK CHANGE ARTIST  
ESTABLISHED IN 1963

1319 W. ST. JOSEPH ST.  
547-2004 • PERRYVILLE

Monday-Friday: 7:30-5:30 • Saturday 7:30-3:00  
Log onto [www.plazatireservice.com](http://www.plazatireservice.com) for more savings on-line!  
We Accept Wright Express and Voyager Cards

### \$30

**INSTANT SAVINGS**  
on a UTV or  
Side By Side wheel  
and tire purchase.

Good thru November 30, 2020  
ONLY AVAILABLE AT PERRYVILLE, STE. GENEVIEVE, & SPARTA LOCATIONS

### \$40

**INSTANT REBATE**  
on any  
Mickey Thompson  
truck tire purchases.

Good thru November 30, 2020  
ONLY AVAILABLE AT PERRYVILLE, STE. GENEVIEVE, & SPARTA LOCATIONS

**Plaza Tire Service offers flexible financing solutions!**

**Deferred Interest on \$149 or More!**

\$149 Minimum purchase required. Interest will be charged to your account from the purchase date if the purchase balance is not paid in full within 6 months or if you make a late payment.  
\*MINIMUM MONTHLY PAYMENTS REQUIRED. APR: 28.8%. Minimum Finance Charge: \$1.00. CFNA reserves the right to change APR, fees and other terms unilaterally.  
**It's like a dedicated line of credit for your vehicle!**

**90 DAY NO CREDIT NEEDED!**

**Payment Option**

With our No Credit Needed financing solution, you can get the products & services you need or want today! The program has high approval rates in amounts up to \$3000. To apply successfully, you will need a photo ID, \$40.00 initial debit card payment, SSN or ITIN & your bank routing number & account number.  
\* A credit check is performed as a part of the application process. "No Credit Needed" does not imply no credit check.

**Firestone GET UP TO \$80 INSTANT SAVINGS+ ON ELIGIBLE TREAD PATTERNS**

**\$40 PLUS \$40**

WHEN YOU BUY A SET OF FOUR IN-STOCK FIRESTONE TIRES | WHEN YOU USE YOUR PLAZA TIRE SERVICE CREDIT CARD ACCOUNT

Offer valid Nov. 2-30, 2020. \*Offer applies to in-stock Firestone tires (excluding Destination LT2). Get a \$40 instant savings from Firestone, and an additional \$40 back instantly when you pay for your purchase with the Plaza Tire Service credit card. Offer cannot be combined with any other coupon, special offer, discount or promotion. Subject to credit approval. See store for complete details.

<p><b>Firestone</b></p> <p>205/65R-15.....\$92.97 215/70R-15.....\$88.97 205/55R-16.....\$106.97 215/65R-16.....\$120.97 215/60R-16.....\$114.99 225/60R-16.....\$113.97 235/70R-16.....\$132.97 215/55R-17.....\$130.99 225/65R-17.....\$119.97 235/60R-17.....\$139.99 235/65R-17.....\$149.99 235/65R-18.....\$161.97 245/55R-19.....\$173.97</p> <p><b>All Season</b> Prices Starting At \$88.99 205/70R-15 ALL SEASON TIRE</p>	<p><b>Firehawk A/S</b></p> <p>Prices Starting At \$95.99 195/60R-15 ALL SEASON TIRE</p> <p>215/55R-17.....\$130.99 225/50R-17.....\$141.97 225/50R-18.....\$148.99</p>	<p><b>Firestone</b></p> <p>Destination X/T LIGHT &amp; MEDIUM TRUCK TIRE</p>
<p><b>Firestone</b></p> <p>FT140 205/55R-16 205/65R-16 ALL SEASON TIRE</p> <p>\$78.99 \$96.99</p>	<p><b>Firestone</b></p> <p>FR710 215/55R-17 ALL SEASON TIRE</p> <p>\$102.99</p>	<p><b>Firestone</b></p> <p>Transforce AT LT265/70R-17 LIGHT &amp; MEDIUM TRUCK TIRE</p> <p>\$167.99</p>
		<p><b>Firestone</b></p> <p>Destination MT2 LIGHT &amp; MEDIUM TRUCK TIRE</p>

# STONIE'S Sausage Shop

Made in Missouri Since 1959

## 2020 DEER SEASON

ACCEPTING DEER: 7:30 a.m. to 6:30 p.m.  
November 14 thru November 24

**SUMMER SAUSAGES | No Refrigeration Needed**

\$3.50# Minimum Order - 10# Deer + 9# Pork = 19#  
Original | Cheddar & Jalapeno | Cheddar | Pepper Cheese & Jalapeno  
Aprox. 13 oz. per bag. 19 bags per min order.  
Dried | There may be an extended wait.  
\$4.00# Average Yield 10 Bags.

**BOLOGNA SAUSAGES | Keep Refrigerated**

\$3.00# Minimum Order - 10# Deer + 9# Pork = 19#  
Original | Sweet  
Aprox. 13 oz. per bag. 19 bags per min order.

**SNACK STICKS | No Refrigeration Needed**

\$3.70# Minimum Order - 10# Deer + 9# Pork = 19#  
BBQ | Pepper Cheese & Jalapeno | Teriyaki | Western  
Aprox. 11 oz. or 11 sticks per bag. 19 bags per min order.

**SNACK STICKS | Keep Refrigerated**

\$3.70# Minimum Order - 10# Deer + 9# Pork = 19#  
Original | Hot & Spicy | Cheddar | Cheddar & Jalapeno  
Aprox. 11 oz. or 7 sticks per bag. 19 bags per min order.

**JERKY | No Refrigeration Needed**

\$4.20# Minimum Order - 10# Deer  
Original | Sweet  
Aprox. 7 oz. per bag. 10 bags per min order.

**BREAKFAST SAUSAGES | Keep Frozen**

Minimum Order - 10# Deer + 9# Pork = 19#  
Breakfast Sausage Bulk \$2.50# | Breakfast Sausage Link \$2.75#  
Aprox. 1# per bag. 19 bags per min order.

**FRESH BRATWURST | Keep Frozen**

Minimum Order - 6# Deer + 6# Pork = 12#  
Fresh Bratwurst Link \$2.85#  
Aprox. 1# per bag. 12 bags per min order.

**SPECIALTY PRODUCTS | Keep Frozen**

Available thru November 29, 2020 only  
\*These products will not be produced until after November 29.  
\*Fresh Bratwurst bulk \$2.75#  
\*Fresh Bratwurst Links in 2 flavors \$3.20#  
Cheddar | Cheddar & Jalapeno

www.shopstonies.com  
1507 Edgemont Boulevard | Perryville, Missouri  
573-547-2540 | contact@shopstonies.com



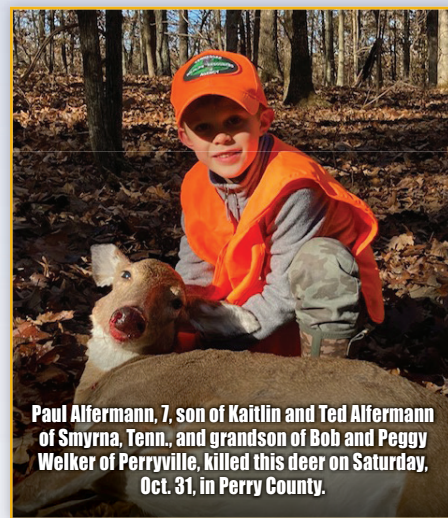
Natalie White, 10, daughter of Elizabeth White of Perryville.



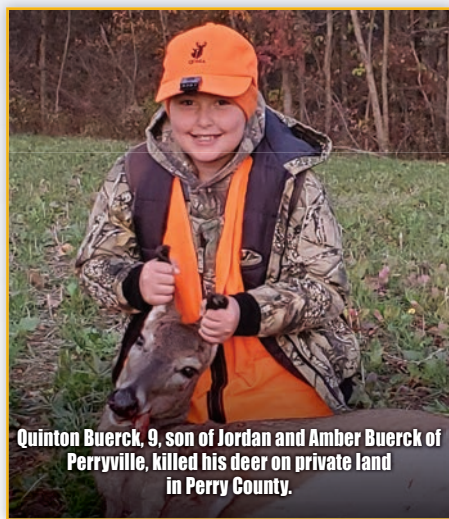
Noah Blythe, 9, son of Dominic and Erin Blythe of Perryville.



Noah Buchheit, 12, son of Carrie Buchheit, killed this deer in Perry County.



Paul Affermann, 7, son of Kaitlin and Ted Affermann of Smyrna, Tenn., and grandson of Bob and Peggy Welker of Perryville, killed this deer on Saturday, Oct. 31, in Perry County.



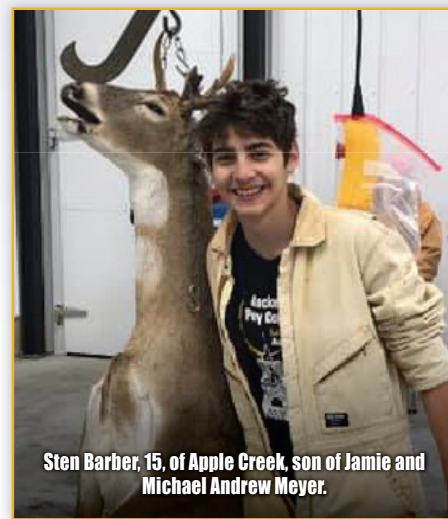
Quinton Buerck, 9, son of Jordan and Amber Buerck of Perryville, killed his deer on private land in Perry County.



Reese Morrison, 12, daughter of Ryan and Jennifer Morrison of Oak Ridge.



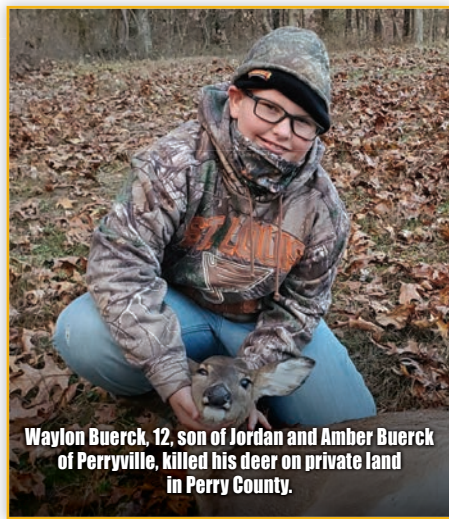
Samuel Meyr, 8, son of Brad and Kristi Meyr of New Wells, killed this 8-point buck on opening morning.



Sten Barber, 15, of Apple Creek, son of Jamie and Michael Andrew Meyer.



Troy Hurst, 11, of St. Mary, son of Michael Hurst and April Grindstaff.



Waylon Buerck, 12, son of Jordan and Amber Buerck of Perryville, killed his deer on private land in Perry County.



Winston Fritsche, 6, son of Thomas and Nicole Fritsche of Frohna.



Ziva Thurman, 10, granddaughter of Donnie and Suzi Gwinn of Perryville.

# MDC makes CWD sampling voluntary this year

By Robert Cox  
rcox@perryvilenews.com

As in previous years, Perry County is one of 30 counties across the state making up the Missouri Department of Conservation's management zone for chronic wasting disease.

As usual, deer in the CWD management zone will be tested for the disease, but unlike previous years, sampling during opening weekend will be voluntary.

"The Department of Conservation, in response to the COVID-19 pandemic, decided to change it from mandatory to voluntary," said Perry County Conservation agent Chris Doran. "We'll still have our two stations here in Perry County, one at the Perryville Forestry Office, and the other one at the Heartland Social Club there off [Hwy. A]. It'll be reduced staff, but there will still be folks there opening weekend and folks that want to come by and get their deer sampled for CWD, there will be department personnel that can do that. It'll be the same process as last year. They'll give you a card with a number and then you can check in a couple of weeks later to see if it was positive."

CWD is a fatal transmissible neurological disease of deer and elk that produces small lesions in brains of infected animals, caused by abnormal proteins called prions. The disease was first detected in Perry County in 2018.

"CWD represents a great threat to the health of Missouri's deer and elk herds and to our hunting culture," said CWD Mandatory Sampling Coordinator Kevyn Wiskirchen. "Sampling deer for CWD allows early detection of the disease and allows for rapid management intervention to slow its spread. Hunters play a critical role in helping MDC find and manage CWD by having their deer sampled."

Doran said the decision to change to voluntary testing simply came down to safety.

"It's certainly voluntary and we will still have those

stations open, but to lessen the number of people that would have to be in close proximity to one another," Doran said. "We did pretty well with getting the hunters out in a timely manner, but we wanted to be safe."

After opening weekend, hunters will still be able to get their deer tested for the disease. In addition to testing done at participating meat processors, the MDC has provided a number of drop-off locations around the state.

"The department set three drop-off freezers in Perry, St. Genevieve at St. Francois counties — we've actually got one here at the Perryville Forestry Office," Doran said. "It's an actual freezer that the department has placed in those three counties. It's in a secured location, and when you open it up, there'll be instructions on what to do. Generally, folks will have the head cut off and six inches of the neck. There's a bag in there, they bag it up, they fill out a card that identifies who they are, the deer, and everything like that, and then they just leave it in the freezer."

Doran said that the heads will then be collected by an employee from the MDC office in Cape Girardeau, who will conduct the sampling.

"Any time folks want their deer sampled, they can simply just cut off the head and six inches of the neck and bring it in there and drop it off at one of the freezers, any time of the day, any time during the season," Doran said.

As for testing through meat processors, Doran said Perry County residents have two options.

"Here in Perryville, [Stonie's Sausage Shop] and [Etzold Packing] are still our voluntary sampling stations, so you can bring them by there," Doran said.

The 30 counties that make up the CWD Management Zone are Adair, Barry, Cedar, Chariton, Christian, Clark, Crawford, Franklin, Gasconade, Hickory, Howell, Jefferson, Knox, Linn, Macon, Mercer, Oregon, Ozark, Perry, Polk, Putnam, St. Charles, St. Clair, St. Francois, Ste. Genevieve, Stone, Sullivan, Taney, Warren, and Washington.

Wiskirchen added, "Al-

though sampling is voluntary this year, to help us detect CWD as early as possible and protect the state's deer herd, we strongly encourage hunters in CWD Management Zone counties to have their deer sampled at one of our stations on opening weekend, or at other locations throughout the duration of deer season."

In addition, MDC staffers will be following pandemic protocols at sampling stations, including social distancing, gloves and face masks at all times. Hunters and those with them will be asked to remain in their vehicles while their deer is being sampled. Hunters will only be asked to provide county of harvest and will not be asked to identify harvest location on a map.

Hunters and others who are exhibiting symptoms of COVID-19, or have a known COVID-19 exposure to refrain from visiting CWD sampling stations.

Before having deer sampled for CWD, the MDC requests that hunters follow these rules:

- Field dress and Telecheck

deer before arrival at a sampling station.

- Bring the carcass or just the head.
- Position deer in vehicles with heads and necks easily accessible.
- Capes may be removed in preparation for taxidermy before going to a sampling station.

- The person who harvested the deer must be present.
- The hunter's conservation number will be required, along with county of harvest.
- If using a paper permit, have it detached from the deer for easy access.
- If using the MO Hunting app, have permit and Telecheck information available.

*Stop in and check out our Ford trucks, which will get you to and from all of your hunting adventures!*

**Bening Ford**

909 S Perryville Blvd. | Perryville, MO 63775  
(573) 547-8377 | (800) 649-8377 | beningford.com

**OBERLE MEATS**

21529 Highway 32, Ste. Genevieve, MO  
Hours: Monday-Saturday 6:30 am-5:30 pm  
573-883-5656 or Toll Free: 877-483-5656

Oberle Meats is now accepting **BONELESS DEER MEAT**

Suggestions for deer meat handling: bone your deer, taking out all excess fat and blood shot meat; place meat in storage bags of 10 lbs. or less; and chill meat to under 40°F as soon as possible. Ice should be placed on the bags of meat, not in the bag with meat. Only freeze in small bags for easy handling and later thawing.

Deer meat will be processed now until 2 weeks before Christmas. Deer meat will be accepted again for processing in January. At that time, snack sticks will also be available.

For questions about deer processing, please call 573-883-5656

**THE BUCK DROPS HERE**

**Tuff Times**  
pawn & gun

**NEW & USED GUNS • REPAIR • AMMO • ACCESSORIES**

573-517-7296 • 102 N WEST STREET • PERRYVILLE, MO 63755