

# 2024 EAST PERRY COMMUNITY FAIR

# Best FAIR in the Land

Little

HOME OF THE JUMPING MULES

SEPTEMBER 20 & 21, 2024 | ALTENBURG, MO | FAIR GROUNDS | SEPTEMBER 19, 2024 PUBLICATION BY: MONITOR



# *An Affordable Senior Community* **Now Renting!**



## **RHF Perryville Senior Apartments**

21 E. St. Joseph St., Perryville, MO  
Call Today for More Information

**573-547-4330**  
**TDD 1-800-545-1833 Ext. 359**



[perryvilleapartments@rhf.org](mailto:perryvilleapartments@rhf.org)

*A Retirement Housing Foundation Community*

RHF Perryville Senior Apartments is located in close proximity to restaurants, stores, banks, and a post office. Community amenities include an elevator, ample parking, on-site laundry, and heating and air conditioning. RHF Perryville Senior Apartments is a non-smoking community.

To qualify, the primary applicant must be at least 62 years old or 18 and over and mobility impaired. Income limitations are determined by the U.S. Department of Housing and Urban Development (HUD).



Section 504 Coordinator: Yuri Escandon,  
VP - Operations, FPM, Inc.  
911 N. Studebaker Road, Long Beach, CA 90815



# INTRO NOTE

## ATTENTION FARMERS

FOR ALL YOUR DIESEL FUEL INJECTION NEEDS COME TO THE PEOPLE WITH THE KNOWLEDGE AND EXPERIENCE!

## WE REBUILD ALL TYPES OF DIESEL FUEL SYSTEMS

• American Bosch • C.A.V. • Roosa Master • Simms • Bryce •  
• Nippondenso • Diesel Kiki • Robert Bosch •

**ONE YEAR WARRANTY ON OUR PUMP WORK**



### Bootheel Diesel

Fuel Injection Service  
*Locally Owned & Operated*

2909 East Malone Ave., Sikeston, MO 63801 • 573-471-1039



**ROTTLER**  
PROVEN PEST SOLUTIONS

Schedule with your  
local **pest** experts

**(573) 334-4215**



- ✓ Mosquito
- ✓ Termite
- ✓ Mole
- ✓ And more!





*Stop by our booth at the fair  
and visit with us!*



**Altenburg**

**Ph: 573-824-5221**

**Fax: 573-824-5310**

**Jackson**

**Ph: 573-243-6969**

**Fax: 573-204-0900**

Member  
**FDIC**



[www.peoplesoa.com](http://www.peoplesoa.com)

# EAST PERRY COMMUNITY FAIR

ALTENBURG, MISSOURI

## SCHEDULE OF EVENTS 2024

### Friday, September 20:

- |            |                                      |
|------------|--------------------------------------|
| 8:00 A.M.  | Judging of Poultry and Small Animals |
| 9:30 A.M.  | 4-H & FFA Market Lamb/Goat Show      |
| 10:00 A.M. | Judging of Hall Exhibits             |
| 1:30 P.M.  | Parade                               |
| 2:30 P.M.  | Opening Ceremonies                   |
| 4:00 P.M.  | 4H & FFA Barrow Weigh-In             |
| 4:00 P.M.  | Music by Him & Her                   |
| 5:00 P.M.  | 4H & FFA Steer Weigh-In              |
| 6:00 P.M.  | 4X4 Truck Pull                       |
| 7:00 P.M.  | Music by Still Standing              |



**BETTER HEARING  
SOLUTIONS**

Enjoy all the sights and  
**SOUNDS** of the  
East Perry Fair!

620 N. Kingshighway, Perryville, MO 63775  
**573-547-2888**  
[www.betterhearingsolutions.net](http://www.betterhearingsolutions.net)

## Saturday, September 21:

8:00 A.M.	4-H & FFA Steer Show
8:30 A.M.	Judging of Sheep, Goats, & Swine
9:00 A.M.	Judging of Beef Cattle
10:00 A.M.	Judging of Draft Horses & Mules
10:00 A.M.	Pedal Tractor Pull
10:30 A.M.	Dairy Cattle Show
12:00 P.M.	Music by: 12:00 P.M. Ian Ferguson; 1:15 P.M. Carly Green; 2:30 P.M. Logan Chapman; 3:45 P.M. Clint Sattler
3:30 P.M.	Jumping Mules Competition
5:00 P.M.	4-H & FFA Sale

6:00 P.M.	Attendance Prizes
6:00 P.M.	Hot Rod Tractor Pull featuring Hot Farm Stock Pullers
7:00 P.M.	Music by Generation

Best Little  
**FAIR**  
IN the Land

For more information go to  
[www.eastperryfair.com](http://www.eastperryfair.com),

visit us on Facebook



or call 573-824-5322.

**FREE PARKING,  
FREE ADMISSION,  
FREE ENTERTAINMENT**

We Wish **GREAT SUCCESS** to the  
*East Perry Community Fair!*



**TG MISSOURI** • 2200 PLATTIN RD., PERRYVILLE, MO • 573-547-1041 • [WWW.WORK4TG.COM](http://WWW.WORK4TG.COM)

# PARADE M



**MFA OIL**  
FUELS • PROPANE • LUBRICANTS



**1042 Industrial Dr., Perryville**  
**573-547-7088 • www.mfaoil.com**



Join us at the  
East Perry  
Fair!

Tire Sales  
& Service  
Repair &  
Maintenance

**Zetor Tractor Sales**

*K & L Repair*

261 PCR 343, Farrar, MO 63746  
573-824-5247 • 1-800-591-5247

# MARSHAL

**EAST PERRY**  
— Est. 2006 —  
**PUB**  
FROHNA, MO  
BIKERS WELCOME

**BEST BURGERS AROUND!**

COLD BEER,  
GREAT FOOD  
AND GOOD FRIENDS  
IS WHAT YOU'LL  
ALWAYS FIND.

• • •  
**FRIDAY, SEPTEMBER 20th**  
**SERVING**  
**BREAKFAST PLATTERS**  
6 a.m. - 10 a.m.

**Rozier's**  
Celebrating 121 Years  
Community Cornerstone!

**Have Fun AT THE FAIR!**

*Our friendly staff is here to help you!!!*

Department Store 2 E. Ste. Maries, Perryville 573-547-6521	Food Centre 217 N. Main, Perryville 573-547-6523
--	--

**Proud supporter of the East Perry Community Fair...**  
*"The Best Little Fair in the Land" !!*

**D & K  
Masonry**

Wayne 573.788.2940 • 573.768.0137  
*"Exceptional Craftsmanship In Brick & Stone Masonry Since 1993"*

**Veterans of Foreign Wars**

**"All gave some, some gave all"**

610 Thomas Street, Perryville, MO 63775

# 2024 MUSICAL ENTERTAINMENT LINEUP



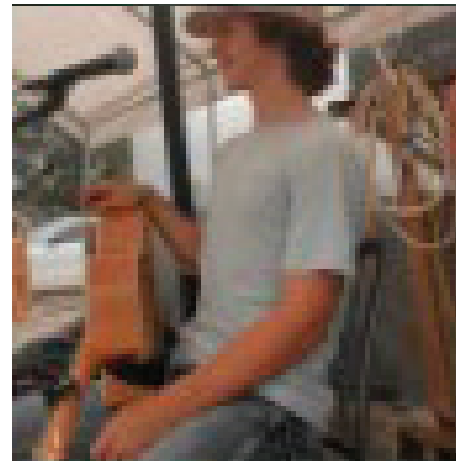
FRIDAY, SEPT. 22  
4:00 PM

**HIM & HER**



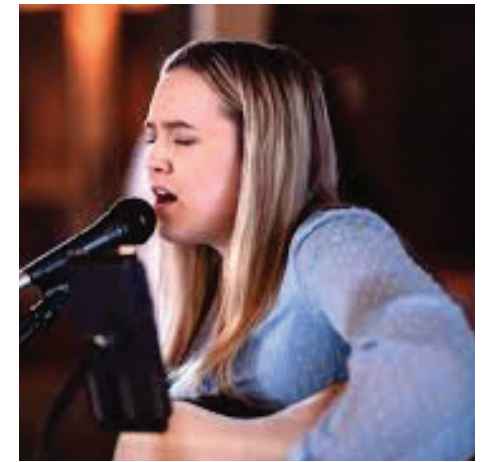
FRIDAY, SEPT. 22  
7:00 PM

**STILL  
STANDING**



SATURDAY, SEPT. 23  
12:00 PM

**LANDON  
OVERBEY**



SATURDAY, SEPT. 23  
1:00 PM

**CARLY  
GREEN**

*Future* **SAXONY CRUSADER FAMILIES,**

On behalf of Saxony Lutheran High School, you and your Future Crusader are invited to visit our school for one of the upcoming Mini Crusader Days. We would be honored to welcome you to our school and provide you with an opportunity to learn more about the innovative curriculum, technology, and educational/extracurricular experiences Crusader students receive at Saxony Lutheran High School.

These Mini Crusader Days are offered during school hours (7:45 – 10:00) and is a time that your family will participate in chapel and tour the building with a Saxony Student Ambassador. Your future Crusader will also be able to shadow a class while parents/guardians meet with Saxony faculty representatives to learn more about academics, activities, technology, and a little more about The Saxony Way.

We look forward to your visit to learn more about what it means to be a Saxony Crusader. If you have any questions prior to your visit or any of these dates do not work for your family, please email Mrs. Missy Adams [madams@saxonylutheranhigh.org](mailto:madams@saxonylutheranhigh.org).

**Join us on Sunday, December 8, 2024 for our Open House (1:00 – 2:30) and Christmas Concert (3:00.)**

*Thank you for your continued support and prayers as we continue "Sharing Christ...Shaping Lives" at Saxony Lutheran High School.*

In His Service, Mark Ruark – Principal & Missy Adams – Assistant Principal

**SCAN THE QR CODE AND FILL OUT THE MICROSOFT FORMS TO PARTICIPATE AND SIGN-UP FOR A MINI CRUSADER DAY.**

**Saxony  
Lutheran  
HIGH SCHOOL**  
2004 Saxony Drive, Jackson, MO 63755  
**573-204-7555**





SATURDAY, SEPT. 23  
**2:00 PM**  
**DUECE DENNINGER & FRIENDS**



SATURDAY, SEPT. 23  
**3:00 PM**  
**EAST END BLEND**



SATURDAY, SEPT. 23  
**4:00 PM**  
**CLINT SATTLER**



SATURDAY, SEPT. 23  
**7:00 PM**  
**FAULT LINE BAND**

Enjoy a **SAFE & WONDERFUL** time at this year's **BEST LITTLE FAIR** in the **LAND!**

*Be sure to VISIT our **BOOTH!***

**M&H HEATING AND COOLING**  
 SALES | SERVICE | INSTALLATION | SERVICING THE AREA SINCE 2017  
 3334 South Hwy 61, Perryville, MO 63775 | 573-846-7692 | mhheatingandcooling.com

**HeatMaster**  
 BUILT TO A HIGHER STANDARD  
**American Standard**  
 HEATING & AIR CONDITIONING

**DRIVE SAFELY** to and from the East Perry Community Fair!

**PERRYVILLE TIRE PROS**

*Your Local Complete Tire Center!*

NOTICE: OPEN WEEKDAYS 7:00 A.M. TO 5:00 P.M. • SATURDAY 7:00 A.M. TO 1:00 P.M. (MECHANIC ON DUTY) OFFICIAL STATE INSPECTION STATION • www.perryvilletire.com

**423 Magnolia Street, Perryville, MO • 573-547-4342**

**ETZOLD PACKING**

Perryville, MO 63775 • (573) 547-6815

Custom Slaughtering & Processing  
 Smoked Meats & Curing



# 4X4 TRUCK PULL

**FRIDAY, SEPT. 20, 2024**

**FIRST HOOK 6:00 PM**

**at the East Perry Community Fair Altenburg, Missouri**

**FREE PARKING & FREE ADMISSION TO FAIR & PULL**

**\$20.00 Hook Fee**

**100% Hook Fee Payout**

**Plus Over \$3,000 Added Prize Money**

**Paying 3 Places per Class**

Altenburg Truck Pull Rules will be used. • Rules will be posted on Facebook.

No Grudge, Back-to-BCK, 2 Wheel Drive, Or Exhibition Pulls

*Have a great time & stay safe at the*

**EAST PERRY COMMUNITY  
FAIR TRUCK PULL!**



**ROLLET BROS LOGISTICS CO., INC.**

www.rolletbros.com | 1-800-942-5590 | 227 St Hwy M, Perryville, MO 63775

## CLASSES TO BE PULLED:

Factory Stock Gas 6,500#/7,000#

Modified Gas 6,200#/6,500#

Super Street Diesel 8,500#/9,500#

Modified Street Diesel 8,500#/9,500#

Heaven Bound Sled - Larry Montgomery

**20 Food Stands & 6 Beer Stands**

**- No coolers, outside food, or drinks**

Tech Questions:

Gas - Mark Tesson 573-944-2102

Diesel - Adam Pleimann 573-579-8220

VISIT - Aultenburg Truck Pull and East Perry Community Fair on Facebook 



**Family Fun on the Farm!**

# Perryville Pumpkin Farm

*Perryville* 

**NOW OPEN through October 31**  
**7 Days Per Week • 9 a.m. - 7 p.m.**  
**Schedule Field Trips NOW!**

- Country Store • Pumpkin Stacks
- Mazes • Animals • Bale Fort & More
- • • SEASON PASSES • • •

**All Colors of Pumpkins Picked & Ready!!!**

1410 Allens Landing (E Road), Perryville • www.perryvillepumpkinfarm.com • 573-513-2899



HOME, BUSINESS,  
 CAR & REMOTE

# BUCHHEIT

 Lock & Key 

SERVICE & REPAIR

108 E. NORTH ST., PERRYVILLE • 573.547.8526 • HOURS: MON-THU: 8:30 AM - 5:00 PM



## Auto Parts, LLC

588 County Road 649  
 Cape Girardeau MO 63701

- Family owned salvage yard
- Established in Oct. 2000
- Specialize in quality used auto and truck parts
- Deliver to businesses in a 100 mile radius
- Over 1,200 vehicles on site
- Several warehouses stocked full of guaranteed parts
- Offer a 6 month warranty
- Network with hundreds of other salvage yards to find what you are looking for
- Sell engines, transmissions, rear end assemblies, batteries, tires, glass, sheet metal, bumpers and just about anything on a vehicle

*Come see the difference low prices and customer satisfaction can make!*

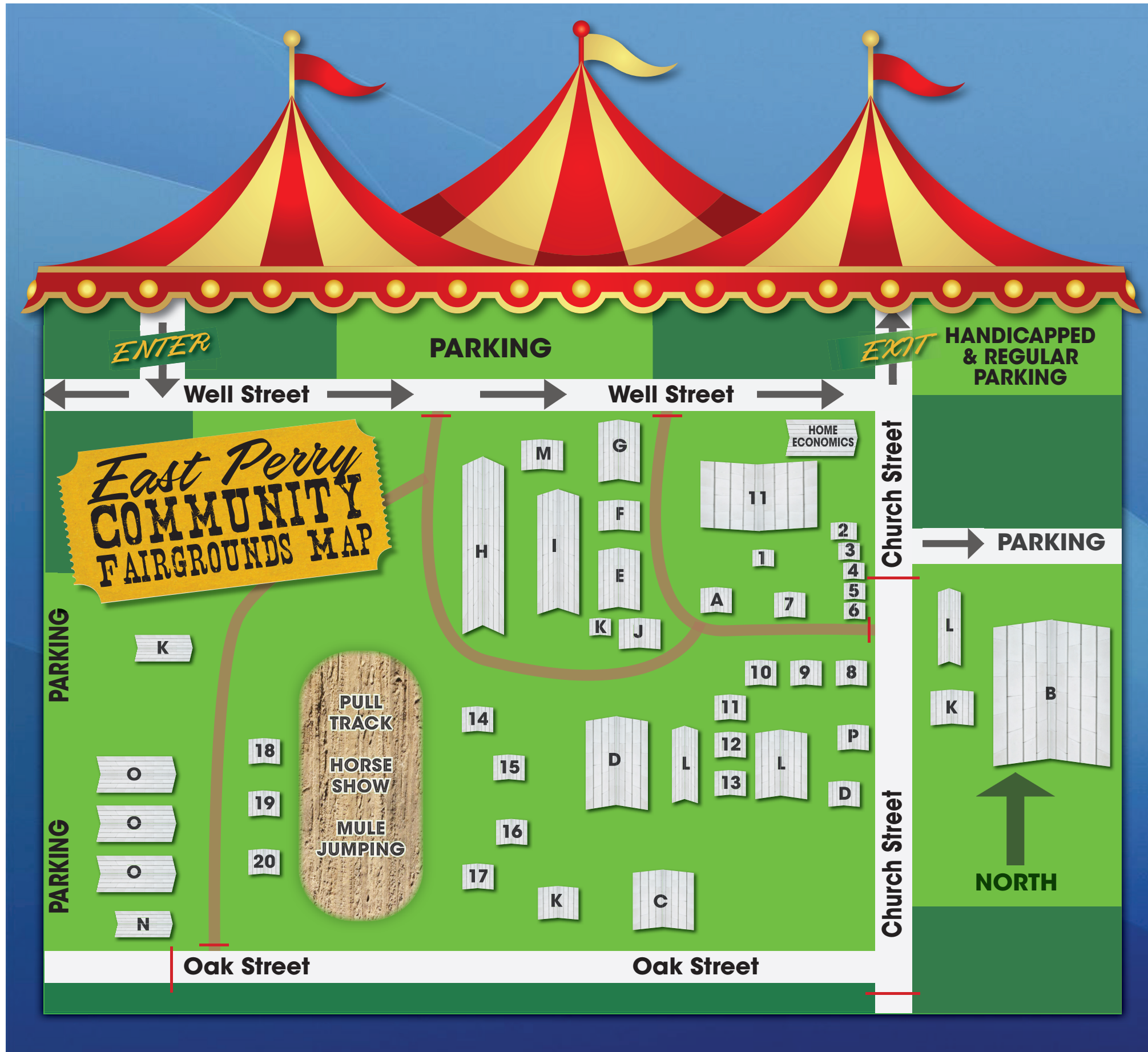
• Hours are Mon-Fri 8 a.m.-5 p.m. •

Phone: 1-573-335-0238 • Fax: 1-573-339-9790

**Toll Free: 1-866-746-6288**

Web: www.juniorsinnautoparts.com





## Map Key

- A = STAGE
- B = RIDES/GAMES
- C = PETTING ZOO
- D = FARM MACHINERY
- E = CROPS, PHOTOGRAPHY & 4-H
- F = POULTRY
- G = FFA BUILDING
- H = DRAFT HORSE & MULE BARN

- I = DAIRY CATTLE & SWINE BARN
- J = FAIR OFFICE
- K = RESTROOMS
- L = EXHIBITOR BOOTHS
- M = SHEEP & GOAT BARN
- N = CATTLE SHOW BARN
- O = CATTLE BARNS
- P = FIRST AID

## Food Stand Key

- 1 = ICE CREAM
- 2 = CATFISH FILLETS SANDWICHES
- 3 = GRILLED CHEESE SANDWICHES
- 4 = KETTLE POPCORN
- 5 = CORN DOGS
- 6 = FUNNEL CAKES & NACHOS
- 7 = HAMBURGERS & CHEESEBURGERS
- 8 = PORK STEAKS & RIBBON POTATOES
- 9 = SLICED BBQ PORK SANDWICHES & ICED TEA
- 10 = PORK BURGERS
- 11 = BRATWURSTS, GIZZARDS, HOT DOGS & CARAMEL APPLES
- 12 = HADLEY'S CANDY SHOPPE  
- COTTON CANDY & FREEZE-DRIED CANDY

- 13 = MUELLER'S MUNCHIES  
- HOT DOGS, FRIED OREOS & SNO CONES
- 14 = ICED TEA & WATER
- 15 = POTATO BOATS & NACHOS WITH PULLED PORK
- 16 = SHAVED ICE SNO CONES - KONA
- 17 = SWEETIES BLOOMING ONIONS  
- BLOOMING ONIONS & TURKEY LEGS
- 18 = PHILLY CHEESESTEAK SANDWICHES,  
BONELESS WINGS & NACHOS
- 19 = QUESADILLAS & TACOS
- 20 = CHICKEN TENDERS, VIETNAMESE EGG ROLLS,  
SEASONED FRIES AND FRIED ICE CREAM

 ROAD BLOCKS

 PRIVATE PROPERTY  
NO PARKING

 PULL TRACK & HORSE  
SHOW ARENA



# FOOD STAND VENDORS

**LOCATED IN THE FOOD COURT  
SURROUNDING THE STAGE:**

**ICE CREAM:** ..... East Perry County Lions Club

**CATFISH FILLETS SANDWICHES:** ..... Fair with workers from  
Saxony Lutheran High School Boosters and Others

**GRILLED CHEESE SANDWICHES:**..... Fair with workers  
from Immanuel Lutheran, Altenburg and Others

**KETTLE POPCORN:** ..... Nolan Crank of Sedgewickville

**CORN DOGS:**..... Craig & Molly's Hutch of Marble Hill

**FUNNEL CAKES & NACHOS:** ..... Saxony & UCLS Parents  
from Salem Lutheran, Farrar

*Enjoy "The Best Little Fair In The Land"!*

**WE ARE A FULL SERVICE CPA, OFFERING:**

- Personal • Farm • Partnership • Corporate Tax Preparation • Full Payroll Service

**CAROL A. HELLWEGE CPA, PC**

411 N. Main St., Perryville, MO 63775

**(573) 547-4475 • Fax: (573) 234-6526**

**8 a.m.-5 p.m. Monday-Friday • Other times available by appointment**

**HAMBURGERS & CHEESEBURGERS:** ..... Fair with workers from United in Christ Lutheran School PTL

**PORK STEAKS & RIBBON POTATOES:** .....Lil' Country Store, Jack Cook of Fruitland

**SLICED BBQ PORK SANDWICHES & ICED TEA:** .....Barb Kagle of Jackson

**PORK BURGERS:** .....Perry County Pork Producers

**BRATWURSTS, GIZZARDS, HOT DOGS & CARAMEL APPLES:** .....Herb Steffens Family of East Perry County

**HADLEY'S CANDY SHOPPE - COTTON CANDY & FREEZE-DRIED CANDY:** .....Hadley Warren of Perryville

**MUELLER'S MUNCHIES - HOT DOGS, FRIED OREOS & SNO CONES:** ..... Marty and DessiLee Mueller of Kelso

**SHAVED ICE SNO CONES:** .....Kona Ice, Steve & Casey Williams of Dexter

**SWEETIES BLOOMING ONIONS:** ..... Blooming Onions & Turkey Legs, Jamie Welker of Jackson

**LOCATED WEST OF THE PULL TRACK AND ARENA:**

**PHILLY CHEESESTEAK SANDWICHES, BONELESS WINGS & NACHOS:** ..... The Grill on the Hill - Bleau Deckard & Les Fritsche of Frohna

**QUESADILLAS & TACOS:**.....Mudcat Moblie Rebecca Moore of Oak Ridge

**CHICKEN TENDERS, VIETNAMESE EGGROLLS, SEASONED FRIES AND FRIED ICE CREAM:** ..... Fry Guys of Cape Girardeau

**LOCATED EAST OF THE PULL TRACK AND ARENA:**

**ICED TEA & WATER:** .....Barb Cagle of Jackson

**POTATO BOATS& NACHOS WITH PULLED PORK:** .....Mike Friedman of Ste. Genevieve



**IT'S YOUR CHOICE!**

**Garrismotive**

Body Shop

Sandblasting and Rock & Stone Engraving

Perryville, Mo • 573.768.1200

Enjoy the

**EAST PERRY FAIR**

WE LOOK FORWARD TO SERVING YOU IN THE FUTURE! — DAVID WELKER

**Landmark GAS CO.**

238 HIGHWAY V, PERRYVILLE, MO 63775 • 573.547.6464

# JUMPING MULE COMPETITION

Saturday, September 21, 2024 at 3:30 p.m.

SUPERINTENDENT: MIKE ENGERT - ASSISTED BY TRENT BRONENKANT, JODY PONDER, WAYNE MEYER, ROBB BRODIE - JUDGE: SEAN GRAY - ANNOUNCERS: CHARLIE MANGELS & TOM SACHSE

## CLASS 1

Height of Mule - less than 47"

## CLASS 2

Height of Mule - 47" to 52"

## CLASS 3

Height of Mule - more than 52"

## CLASS 4

Open - Mules from previous classes may jump again. The number of mules jumping in the open class may be limited of officials.

## TOTAL PRIZE MONEY

\$2,400 - Plus \$500 Bounty on Fair and World Records

## PRIZE MONEY PER CLASS

1st Prize \$250,  
2nd Prize \$150,  
3rd Prize \$100,  
4th Prize \$75,  
5th Prize \$25

# KOHLFELD

COMPANIES



*Thank you to our loyal customers!*

Coors  
LIGHT

Miller  
Lite

Yuengling  
FLIGHT  
NEXT GENERATION OF LIGHT BEER



**MULES MUST BE THERE BY 2:30 P.M TO REGISTER FOR COMPETITION**  
**For more Information Call Luke Ponder 573-579-9188**

- Each mule may jump in only one class based upon height of mule, except for mules in open class. All mules will be measured before competition begins.
- Mule will be limited to one handler and one hazer. Hazer may not contact mule in any way and must remain outside barriers. Only handler, hazer, and officials may be in the immediate jumping arena.
- No whipping or mistreatment of mules will be permitted.
- Top bar of barrier will be supported by dowel pins. If a pin is broken the jump will not be allowed.
- Twelve foot side barriers will be used. Mule must be stopped inside barrier area before jump. Any mule leaving the approach area may receive one additional attempt.
- Each mule will receive two tries at each height. A time limit may be implemented or each mule may be limited to one try due to a large number of entries or other time constraints. Number of tries for each mule will be determined prior to the start of each class.
- In the event of a tie, a mule that completes the jump on the first attempt will be placed ahead of a mule that completes the jump on its second attempt.
- Inappropriate behavior and foul language will not be tolerated. A mule, or mules, may be disqualified for the action of its handler and hazer or helpers.



**Quality Outdoor Wood Furnaces**

*We carry a full line of wood, pellet and clean fire furnaces, plus parts and supplies for installation, maintenance and service.*

*Give us a call today!*

**Richard Worley Sales LLC**

*Proven Engineering Since 1989*  
 6915 Busiek Rd., Farmington, MO 63640  
 richard@worleysales.com • www.woodmaster.com  
**(573) • 756 • 6879**

**WOODMASTER®**

*Stop by our booth across from the fish stand!*

**LIVE TO DRILL**

**ROBINSON**

**DRILL TO LIVE**

**Robinson Well Drilling Inc.**

(573) 547-2505 • robinsonwelldrilling@ccilink.net  
 Owners/Operator:  
**Todd Robinson (573) 513-3234 Terri Robinson (573) 517-2629**  
 4296 Hwy B • Perryville, MO 63775  
 Commercial & Residential Drilling \* Geothermal  
*\*In Business for over 50 Years\**

# HOT ROD TRACTOR PULL

**SATURDAY, SEPTEMBER 21, 2024**

**FIRST HOOK 6:00 PM**

**at the East Perry Community Fair Altenburg, Missouri**

**FEATURING:**

**ILLINOIS HOT FARM STOCK PULLERS ASSOCIATION: 8000# AND 9,250**

**PLUS ADDITIONAL CLASSES**

**\$20 HOOK FEE • 100% HOOK FEE PAYOUT PLUS \$100PRE CLASS**

**PAYING THREE PLACES PER CLASS**



*Professional Pest Services*

*Our Residential Service Plan, InsectaShield®*

*Protects your home from Termites, Ants, Spiders, Mice,*

*Wasps and General Pests*

*Includes 6 treatments peryear but only requires 1 interior service peryear, so you don't have to alter your schedule to keep your home pestfree. It also includes a continuous warranty between treatments, so you can rest easy knowing you're covered.*

***Most Homes Less than \$60 per Month***

**Call or TEXT: (573) 803-7828**

***CapeService@BugZero.com***



*Have fun at the*  
**East Perry Fair!**



**Power and Light Done Right!**

16 Saxon Memorial Drive Frohna, MO 63748

(573) 824-5226 • 800-498-5226

MANAGER - GARRETT BEHRLE

# River Hill Antique Tractor Club Rules

## CLASSES:

***Straight off the Farm - 12,500#***

***Modified Out Of Field - 7,500#, 8,500#, 10,500#, 11,500#***

***Modified Out Of Field - Open 11,000#***

***Open/Modified - 5,000# 8mph, 5,500# 8mph, 6,250 5mph***

## FOR MORE INFORMATION:

**Cody Schremp 573-450-6710 • Andy Hadler 573-846-6774**

**Dennis Lappe 573-768-0212 - Landon weber 573-517-3683**



BEER • WINE • LIQUOR  
ICE • MILK  
FOUNTAIN SODA  
FRESH BREWED TEA  
COFFEE • CAPPUCCINO  
SLUSHES • SNACKS LIVE  
BAIT • GRILLING NEEDS  
MISSOURI HUNT/  
FISH LICENSING AGENT

*Enjoy the East Perry Fair,  
and don't forget to pick up a  
**Pizza** on your way to the parade!*

**Gas-A-Mat** OWNERS: MATT & JESSICA HECHT  
Open 7 days a week • 8116 Main St. Altenburg, MO • (573) 824-5587

*Enjoy your time with FAMILY & FRIENDS at the  
**East Perry Fair!***

**JOHNSON  
CASKET**  
DISTRIBUTION COMPANY

**JohnsonCasketCo.com**  
Ask for us at your local Funeral Home.

**K & R Auction Services LLC**

Let us consign your EQUIPMENT  
that you want to sell on  
**AuctionTime.com.**

Give us all the information about the  
equipment and we will get it online!

**AUCTION TIME HAS BIDDERS WORLDWIDE!**

**Ray Kiefer: 573.547.1965 • 573.846.7741 • Kurt Kiefer: 573.517.3786**

# STEER SALE



**Stegall's** LLC  
**TRUCK SHOP**

*Have a fun and safe time at the East Perry Fair!*

(573) 547-2028 • [stegallstruckshop.com](http://stegallstruckshop.com) • 8146 Hwy B, Perryville, MO 63775



Frohna, MO 63748  
Phone: 573-824-5272  
[www.eastperrylumber.com](http://www.eastperrylumber.com)

## FAIR DEPARTMENT SUPERINTENDENTS

<b>Dairy Cattle</b> .....	Robert Landgraf Jr. 573-243-8789
<b>Beef Cattle</b> .....	Greg Jung 573-824-5213, 573-587-1334
<b>4-H &amp; FFA Steer Show &amp; Sale</b> .....	Nathan Hunt 573-824-5850
<b>4-H &amp; FFA Barrow Show &amp; Sale</b> .....	Nancy Boles 573-517-8494
<b>Market Rabbit &amp; Broiler Sale</b> .....	Kim Lohmann 573-513-2217
<b>Sheep &amp; Goats</b> .....	Dennis Lappe 573-768-1746 573-768-0212
<b>Draft Horses &amp; Mules</b> .....	Steve Mangels 573-788-2202, 573-270-9630
<b>Poultry</b> .....	Alisa Schumer 573-547-8127
<b>Field &amp; Forage</b> .....	Derek Miesner 573-576-7841
<b>Horticulture</b> .....	Ruth Roth 573-824-5607
<b>Home Economics</b> .....	Charlotte Seibel 573-824-5495
<b>Photography</b> .....	Linda Engert 573-824-5419
<b>FFA Building Exhibits</b> .....	Derek Miesner 573-576-7841
<b>FFA &amp; 4-H Small Animals</b> .....	Kim Lohmann 573-513-2217
<b>4-H Exhibits</b> .....	Chris Muench 573-382-6118
<b>Pedal Tractor Pull - River Hills Antique Tractor Pull</b> .....	Kurt Kiefer 573-517-3786
<b>Tractor Pull</b> .....	Cody Schremp 573-450-6710
<b>4X4 Truck Pull - Tech Questions</b> .....	Mark Tesson 573-944-2102/Other 573-824-5322
<b>Jumping Mules</b> .....	Mike Ponder 314-808-3107 573-824-5080/Luke Ponder 573-579-9188
<b>Attendance Prizes</b> .....	Mike Engert 573-513-0698
<b>OTHER CONTACT NUMBERS</b>	
<b>Parade</b> .....	Bill Koeberl 573-824-5449/Mike Ponder 314-808-3107
<b>Fair Catalog, Commercial Booths &amp; Exhibits</b> .....	Cary Roth 573-225-2139
<b>All Other Questions &amp; Information</b> .....	573-824-5322



Enjoy the "Best Little Fair in the Land"!



800.887.4555 | EarthworksStone.net

# HOMEBREW SUPPLY

OF SOUTHEAST MISSOURI, LLC

Be **SAFE** and have **FUN** at the

# EAST PERRY FAIR!



www.HomebrewSupplySEMO.com • 573.579.9398 • HomebrewSupply@gmail.com  
 3463 Sate Hwy FF • Jackson, MO 63755 • Wed. - Fri. 5-8 pm • Sat. 9 am-5pm

# BUILDING EXHIB



*Have fun at the fair!*

Trees & Shrubs  
Landscape Designs  
Decorative Rock  
Seasonal Cleanup  
Bark Mulch & Pine Straw  
Shrub Trimming & Care  
Family Owned & Operated  
Residential & Commercial

**ROB ROY**  
NURSERY & LANDSCAPING

*Over 60 Years in Business*

1782 N. Kingshighway, Perryville, MO 63775 • 573-547-2586



Stop by our booth at the  
**EAST PERRY COMMUNITY FAIR**  
and see what we have to offer!

 **MFA**  
AGRI SERVICES

3501 Hwy. 61 South • Perryville, MO • 547-2547

# ITION

## PERRY COUNTY OFFICE HOLDERS

Presiding Commissioner.....Mike Sauer  
 District 1 Commissioner ..... Jay Wengert  
 District 2 Commissioner.....Keith Hoehn  
 Circuit Judge Division 1.....Scott A. Lipke  
 Circuit Judge Division 2.....Benjamin Lewis  
 Associate Circuit Judge.....Craig Brewer  
 Circuit Court Clerk..... Jennifer Hotop  
 Recorder of Deeds..... Dana Pritchard  
 County Clerk.....Jared W. Kutz  
 Prosecuting Attorney.....Caitlin Hoeh Pistorio  
 Sheriff .....Jason Klaus  
 Collector..... Dena Preston  
 Assessor ..... Charlie Triller  
 Treasurer .....Katie Schemel  
 Coroner..... Bill Bohnert  
 Public Administrator.....Tammy Tarrillion  
 County Surveyor ..... Timothy J. Baer



Explore the Possibilities of a Simpler Life...

The banner has a green background with a colorful bunting border at the top. On the left, a dog wearing red sunglasses holds a yellow, red, and blue balloon and an ice cream cone. The text 'SAVE Even More and EARN Rewards and WIN' is written in large white letters. To the right, a circular badge says 'BUCHHEIT BUYERS CLUB DEALS' and a QR code is present. The text 'JOIN THE BUYER'S CLUB' is written in large black letters, and the URL 'buchheits.com/register' is at the bottom.

**SAVE**  
Even More  
and  
**EARN**  
Rewards  
and  
**WIN**



**JOIN THE  
BUYER'S  
CLUB**



[buchheits.com/register](http://buchheits.com/register)



# Financial guidance for wherever life takes you



At Thrivent, we believe money is a tool, not a goal. As a holistic financial services organization owned by our clients, we're here to help you achieve financial clarity and make the most of all you've been given.

Let's talk about your financial goals. Contact our team today.

Advice | Investments | Insurance  
Banking | Generosity

**SEMO Financial Advisors** | 573-547-5000



**Kendra R. Troncale**, CFP®, FIC, RICP®  
Financial Advisor  
212 N. Progress Drive, Suite 10  
Perryville, MO 63775  
[connect.thrivent.com/kendra-troncale](https://connect.thrivent.com/kendra-troncale) |  



**Clay Eubanks**, Financial Associate  
2201 Walton Dr, Suite E  
Jackson, MO 63755  
573-243-5300  
[connect.thrivent.com/clay-eubanks](https://connect.thrivent.com/clay-eubanks)



Certified Financial Planner Board of Standards, Inc. (CFP Board) owns the CFP® certification mark, the CERTIFIED FINANCIAL PLANNER™ certification mark, and the CFP® certification mark (with plaque design) logo in the United States, which it authorizes use of by individuals who successfully complete CFP Board's initial and ongoing certification requirements.

Insurance products, securities and investment advisory services are provided by appropriately appointed and licensed financial advisors and professionals. Only individuals who are financial advisors are credentialed to provide investment advisory services. Visit [Thrivent.com](https://Thrivent.com) or FINRA's BrokerCheck for more information about our financial advisors.