

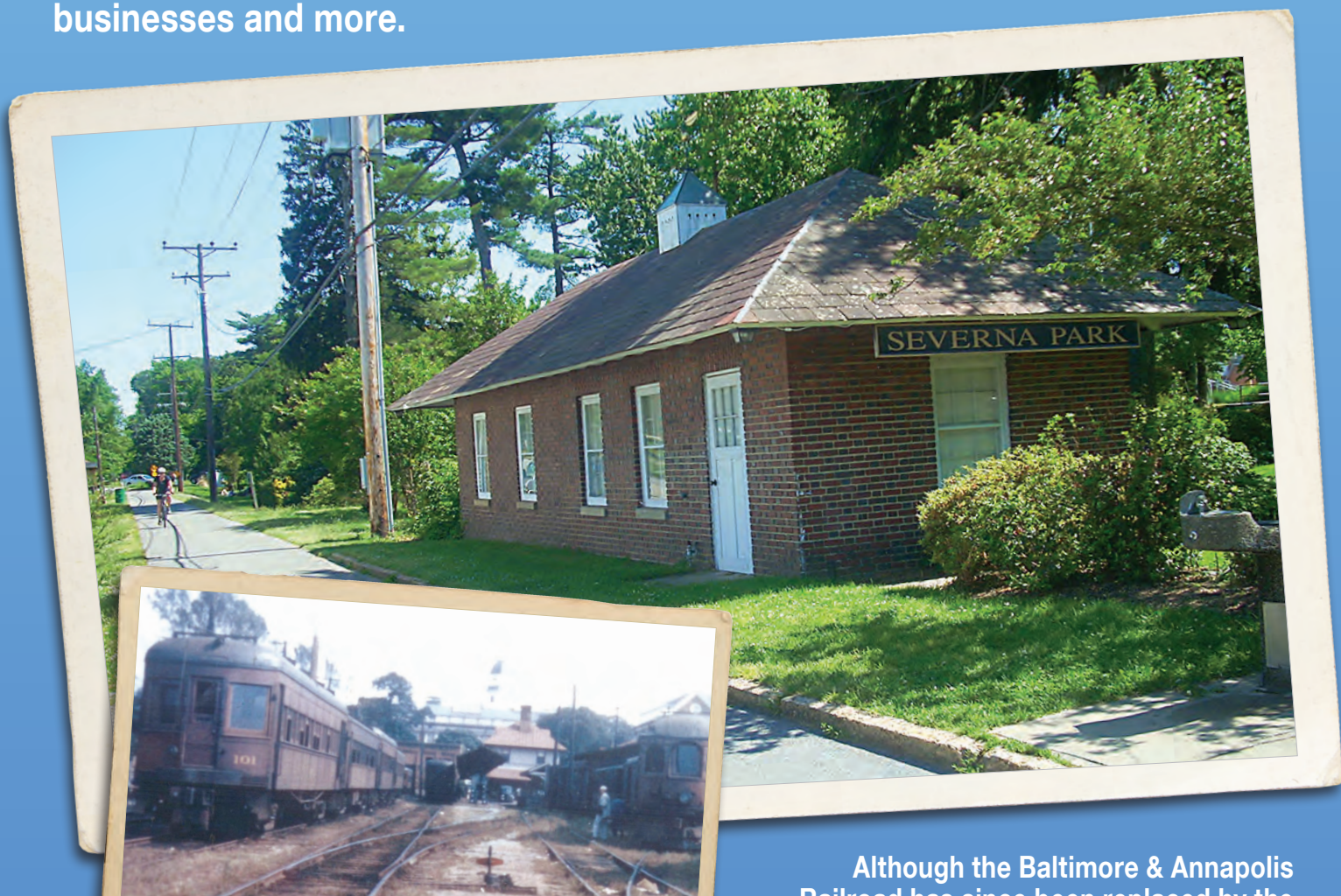
2021

SEVERNA PARK VOICE

SERVING OUR COMMUNITY SINCE 1981

COMMUNITY RESOURCE AND BUSINESS DIRECTORY

A comprehensive guide to the Greater Severna Park area: its history, recreational amenities, clubs and organizations, schools, businesses and more.



Although the Baltimore & Annapolis Railroad has since been replaced by the B&A Trail, the old Severna Park passenger station still stands as a landmark of local history. Since 1966, the building has been home to the Severna Park Model Railroad Club.

LOCAL
POSTAL
CUSTOMER

EORWSS
US POSTAGE
PAID
PERMIT NO. 546
Millersville, MD

Since 1977 Moran Insurance has been here for you.

We were there when you turned 16.

We were there when you bought your first house.

We were there when you opened your first business.

We were there when you bought your first boat.

We were there when coronavirus arrived.

We are still here today.

And no matter what tomorrow brings, we are still here for you.

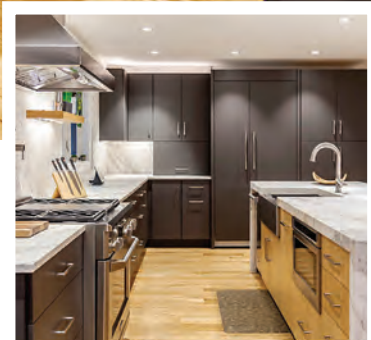


AUTO | HOME | BUSINESS | HEALTH | LIFE

410.384.4877 • info@moraninsurance.com

696 Ritchie Highway • Severna Park

moraninsurance.com



40th ANNIVERSARY KITCHEN ENCOUNTERS

est. 1981

410.263.4900 | KITCHENENCOUNTERS.BIZ



Table of Contents

7 Welcome to Greater Severna Park

Learn what makes the community special.

11 Shop Local

Local businesses hire local workers and donate to local organizations, like Boy Scouts and sports teams.

12 Schools

Severna Park started with a one-room schoolhouse. Now, the area has many public and private schools.

22 Government Agencies & Officials

Find and contact your representatives.

25 Annual Events

From Rock 'N' Roll Revival to the Fourth of July parade, Severna Park has plenty to offer.

28 Clubs and Organizations

These groups are part of the fabric of the community.

29 Senior Facilities

The area includes these assisted living facilities, nursing homes and activity centers.

30 Houses of Worship

Information on churches, temples and more.

32 Parks and Trails

Explore nature and enjoy recreation at these Arnold, Severna Park and Millersville sites.

39 Post World War II History

Before Chartwell and West Severna Park, before there were stoplights and high schools, it was a sleepy town.

41 Green Hornets

Teaching sports and life lessons to area youth.

44 Resource Directory Marketplace

48 SPY Swimming

SPY has developed into a premier program that prepares athletes for top-level competition.

49 Greater Severna Park and Arnold Chamber of Commerce

Members network as part of a like-minded "family."

53 Greater Severna Park Council

The GSPC represents community and voices their concerns, from zoning to public roads and police protection.

54 Founding Families

These people shaped the area we know today.

55 Gold Star Memorial

A gazebo near the B&A Trail honors four heroes.

56 Earleigh Heights Volunteer Fire Co.

This station has served the public for over 100 years.

59 Performing & Visual Arts Studios

Music, theater and arts lessons give youth opportunities to refine their craft.

60 Business Directory Listing

A guide to businesses that provide products and services in Severna Park and beyond.

Publishers

Dianna Lancione
Lonnie Lancione

V.P., Operations

Brian Lancione

V.P., Business Development

Jonathan Katz

Sales Account Executives

Petra Roche
Larry Sells

Editor

Zach Sparks

Editorial Assistant

Haley Weisgerber

The *Severna Park Voice* is published by

 **THE VOICE MEDIA INC.**

Family owned and operated since 1981

Please send your news to:

spvnews@severnaparkvoice.com
P.O. Box 608, Severna Park, MD 21146
410-647-9400

No part of this publication may be reproduced without permission of the publisher ©2021. The publisher is not responsible for any errors, omissions, etc. Views expressed are not necessarily those of the publisher.



Home Sweet Home.

**Banking solutions for Severna Park.
From the local bank that knows your market.**

At Severn Bank, our banking professionals listen to local families and small businesses. They're our neighbors, friends and clients. We hear about their dreams and understand their challenges. Then we deliver exactly what they need. We offer:

- Free Kasasa® Cashback Checking
- Residential and Commercial Mortgages
- Hometown Heroes Accounts for First Responders and Teachers
- Business Banking
- Free e-Statements
- Free Phone Banking
- 55+ Senior Checking
- Free ATM withdrawals at Severn Bank and 55,000 ALLPOINT Network ATMs

Call, visit us online or stop by any of our nearby branch locations and experience the difference Severn Bank delivers.

Severna Park Team

Sonali Patel
Branch Manager
410-260-4591

Crystal Wiley
Community Business Banker
410-260-4536



Annapolis, Westgate Circle and West Street • Crofton • Edgewater • Glen Burnie • Lothian/Wayson's Corner • Severna Park

GARDINER & APPEL

GROUP, INC.

CPAs & ADVISORS

Celebrating over 40 Years of Trust, Integrity and Financial Expertise



Voted Best Accountant
11 Consecutive Years



570 Baltimore Annapolis Blvd. • Severna Park, MD 21146
410.647.7777 • www.GAgroup.cpa

Welcome To Greater Severna Park



Severna Park historian Scott Jay loves to tell the story of how he got appendicitis at 9 years old and store owner Clif Dawson closed his business for the day to take Jay to the University of Maryland Hospital. Many things have changed in the eight decades since then, but one fact remains: Severna Park is a tight-knit community.

Home to more than 38,000 residents, Severna Park is known for its waterfront neighborhoods and for its abundant natural resources, from Kinder Farm Park to the Severn and Magothy rivers. Eleven of Anne Arundel County's Blue Ribbon Schools belong to Severna Park, Millersville or Arnold. The area is also conveniently located along the I-97 corridor, a short drive from Baltimore, Annapolis and Washington, D.C. But geography is not the only trait that makes Severna Park special.

Here, Garry's Grill and other businesses joined to raise \$30,000 for Maryland Special Olympics in January 2021 when the coronavirus caused the Polar Bear Plunge to go virtual. Here, Landmark Roofing owners Artie Hendricks and Rob Calhan provide a free roof annually to a family in need. Here, Rockwell Fitness members saved a man's life when he had a heart attack in fall 2020.

Here, neighbors often shovel one another's driveways when it snows, they cheer on their neighbors' kids at Green Hornets sporting events and they gather for summer beach parties. Those are just some examples of how community is not just a word but a way of life for many families in Severna Park.

Flip through the pages of this directory and you will find lists of schools, restaurants, government agencies and so much more information that is hopefully useful for you, the reader. You will also find several stories about Severna Park's early history. Speaking of history, below are some fun facts about Severna Park.

Severna Park was originally named Boone, for the family who owned the land. In the early 1900s, the land was for sale and 27-year-old Baltimore lawyer Oscar Hatton purchased it with the vision to start developing the area into the town we know today (read more about Severna Park's early history on page 39).

Street, building and other location names taken from the area's history include the Riggs brothers, John Linstid, Elizabeth Boone, Governor Ritchie, Oscar Hatton and Folger McKinsey, among many others.

Notable residents of Severna Park have included Baltimore Ravens owner Steve Bisciotti, "Wheel of Fortune" host Pat Sajak, CBS News correspondent Tony Dokoupil, author Ronald Malfi, professional baseball player Mark Teixeira, professional hockey players Mark and Jarred Tinordi, and Good Charlotte guitarist Billy Martin, to name a handful.

While all those figures had or continue to have varying amounts of time spent living in Severna Park, our hope is that the *Voice's* first Community Resource and Business Directory helps you make the most of life in this area for as long as you call it home. ■

HOMESTEAD GARDENS

Because Life Should Be

Beautiful

We are honored that our store has been recognized as:

Maryland Gazette Readers Choice 2016 Winner, Best Garden Center
The Capital Readers Choice Winner, Best Garden Center - 2014-2020
The Capital Readers Choice Winner, Best Landscaping - 2017 & 2020

About Us:

Homestead Gardens has locations in Davidsonville, Maryland, Severna Park, Maryland, and Smyrna, Delaware. The Davidsonville location boasts 240,000 sq. ft. of retail space, and is famous for show stopping events like our Spring Kickoff, Chicks on the Loose, Fall Festival, and holiday lights display.

Conveniently located between Annapolis and northern Anne Arundel County communities, the Severna Park store on Route 2 was opened in 2010 and offers 35,000 sq. ft. of retail space. This location also offers a large outdoor sales area with concrete water fixtures, pottery and seasonal plants, trees and shrubs.

Homestead Gardens' Horticultural Supply Center caters to landscape contractors, builders and municipalities in the DC-Baltimore region. In addition, Hort Supply offers contractors and home-owners tool rentals.



Landscape Design, Installation & Maintenance
Garden Center | Horticulture Supply | Farm & Pet

Davidsonville | Severna Park | Smyrna, DE

410-384-7966 | www.homesteadgardens.com



Unmatched Success Guiding Families Home in Severna Park and Arnold

#1 Real Estate Team in Anne Arundel County 2013, 2014, 2015, 2016, 2017, 2018, 2019, 2020



David Orso Team of Compass Real Estate

8 Evergreen Rd
Severna Park, MD 21146
O: 443.372.7171
david@davidorso.com

THE
DAVID ORSO
TEAM

Compass is a licensed real estate brokerage that abides by Equal Housing Opportunity laws. Information is compiled from sources deemed reliable but is not guaranteed. Compass is licensed as Compass Real Estate in DC and as Compass in Virginia and Maryland. 24 Annapolis St, Annapolis, MD 20814 | 410.280.1646



COMPASS



Park Plaza Shopping Center

SUPPORT LOCAL BUSINESS

550-582 Governor Ritchie Hwy., Severna Park, MD 21146 | Brought to you by the Park Plaza Merchants.



FOOD AND BEVERAGES

Breakfast Shoppe • Honey Baked Ham Company and Café • JB's Sports Bar & Grille (*coming soon*)
Kyoto Japanese Restaurant • Ledo Pizza • Mezeh Grill (*coming soon*) • Mi Pueblo • Noodles & Company
Park Grille and Tavern • Smoothie King • Subway
Sullivan's Cove • Taco Bell



GIFT SHOPS AND RETAIL

Country Cottage • Dance Supplies • Five Below
Franklin's Toys • Jo-Ann Fabrics • Marc Todd Jewelers • Music and Arts Center • Park Home
Severna Park Kitchen and Bath • Side Street Framers • The Axe House • T-Mobile • UPS Store
Wild Bird Center



HEALTH AND BEAUTY

ATI Physical Therapy • Chesapeake Hearing Center
Creative Force Dance Center • Hair Cuttery • Hand & Stone Massage and Facial Spa • Image Creators
Kwon's Taekwondo • Multi-Specialty Health Care Group • Olde Tyme Barber Shop • Park Fitness
Park Pharmacy • Paul W. Gill, D.P.M. • Planet Fitness
Podiatrist • Priority Care of Severna Park • Severn River Dental • Split Ends Salon • Sport Clips • Top Nails



PROFESSIONAL SERVICES AND BANKING

Coldwell Banker • Residential Brokerage
Edward Jones • Long & Foster Realtors • M&T Bank
Mathnasium • United Title and Escrow



Shop Local

To Help Severna Park Thrive



Small businesses are the lifeblood of a local economy. For every \$100 spent at one of these businesses, \$68 stays in the community, according to Forbes. These businesses create more jobs for area residents, provide products and services that reflect local (as opposed to national) interests, and give back to the community by supporting sports teams and youth groups. Here are the top reasons to shop local:

10 REASONS TO SHOP LOCAL

10. SUPPORT ENTREPRENEURSHIP

The small-business landscape is full of entrepreneurs who used hard work and ingenuity to achieve their dreams. Their success provides young people with examples of how that dedication can lead to prosperity.

9. MAINTAIN LOCAL DECISION MAKING

With local ownership, important decisions are made by people who live in the community and feel the impact of those decisions.

8. ENJOY SELECTIONS GEARED TO LOCAL TASTES AND NEEDS

Local businesses have a wider array of uniquely focused products because they buy and sell based on what they know local customers want and need, creating more relevant choices.

7. INVESTMENT IN YOUR COMMUNITY

Local business owners live here, work here and invest in the community with their time and energy, as well as their dollars.

6. KEEP OUR COMMUNITY UNIQUE

Where we shop, eat and go for entertainment helps make our community home. Our one-of-a-kind businesses are an integral part of the distinctive character of our community.

5. SUPPORT COMMUNITY WELL-BEING

Locally owned businesses build strong neighborhoods by sustaining communities, linking neighbors and contributing to many local causes.

4. GET BETTER SERVICE

In a local business, you know the people behind the counter, and they know you. They have a deep understanding of the products they are selling, and they take time to serve their customers.

3. CREATE JOBS IN OUR COMMUNITY

Small, local businesses are the largest employers nationally and in our community, providing the most jobs to residents. Locally owned businesses are far less likely to move operations to another city, state or country, taking their jobs with them.

2. LOCALLY OWNED BUSINESSES SUPPORT COMMUNITY GROUPS

Nonprofit organizations receive an average of 350% more support from local business owners than they do from non-locally owned businesses.

1. KEEP MONEY IN OUR NEIGHBORHOOD

For every \$100 spent in locally owned independent stores, \$68 returns to the community through taxes, payroll and other expenditures. This purchasing choice versus other purchasing options keeps the most money in the area, and these dollars continue to flow through our community!



Severna Park Schools: A Proud Tradition Of Excellence

Boone School No. 7 was Severna Park's first school, established in the 1800s. Grades one through eight spent their days in the one-room schoolhouse, which was later replaced with a two-room schoolhouse in 1918 and a four-room schoolhouse in 1937 that sits on the site of the current Severna Park Elementary School.

Severna Park Elementary had longtime contributions from first-grade teacher Lucy Landers and Principal Margaret Moss, who both served the school for 50 years.

"If you wanted to be a teacher around the turn of the century, you could not be married," recalled F. Scott Jay, who has lived in Severna Park since his birth in 1943. "You had to wear these long dresses. You had to be pretty close to being a saint.

"Ms. Moss wasn't 5-feet tall," Jay continued. "You could hear her marching down the hall in her high heels, and she always had these spangled bracelets – which were silver bracelets – and she

must have always had 10 of them on her wrist and they were always jiggling. She was no nonsense."

In 1914, with enrollment in Boone's one-room public school at 35 and scarcely a dozen homes in the area, Roland M. Teel opened the area's first private school. The Severn School started as "a boarding school in the country" with the mission of preparing young men for admission to the U.S. Naval Academy.

Teel's results were dramatic. During the school's first four years, not one of its graduates failed to pass the Naval Academy entrance exams and high percentages of Severn men completed the academy's requirements for commissioning.

Severn School grew dramatically over the years in both the size of its campus and its student body. The original enrollment of six in 1914 grew to 375 by

1968. The original, rented house has now become a campus that includes several buildings. In 1971, six girls joined Severn School, breaking its 57-year male tradition.

Jones Elementary opened as a segregated school in 1957, welcoming 150 students into a new brick school building with eight classrooms. The school was integrated in 1966, 12 years after *Brown v. Board of Education*. In the mid-1990s, the community of Manhattan Beach was redistricted to Jones, and a larger school was completed in 1999.

The Jones' school community has always acted on its commitment to create an environment where students not only can learn but want to learn. In 2003, Jones Elementary became the sixth county school to win the distinction of National Blue Ribbon School for its effectiveness in



Severna Park High School got an upgrade in 2017. The 354,162-square-foot building is three stories tall and encompasses more than 100 classrooms.



Severna Park Elementary School began at its current location in 1918. Ms. Lucy W. Landers, who taught first grade for fifty years, started her first teaching assignment at Severna Park Elementary in 1919. Ms. Margaret Moss (below), also one of the early teachers, later became principal of the school. In the mid-1920s, the small elementary school, consisting of just two classrooms, became overcrowded and a third room was added about five years later. (Left) Many years later in 2015, Severna Park Elementary students and staff celebrated the school's Blue Ribbon status.

“Ms. Moss wasn't 5-feet tall. You could hear her marching down the hall in her high heels, and she always had these spangled bracelets – and she must have always had 10 of them on her wrist and they were always jiggling. She was no nonsense.”

— **SCOTT JAY, LIFELONG SEVERNA PARK RESIDENT**



meeting local, state and national education goals.

Folger McKinsey Elementary School was next to open in 1958 near Cape Arthur. The school was named in honor of “the Bentztown Bard” – a staff poet and feature writer for the *Baltimore Sun* who lived in the community. McKinsey was also a lyricist whose “Baltimore, Our Baltimore” (written with composer Emma Hemberger) became Baltimore City’s official municipal anthem in 1916.

Folger McKinsey Elementary has had a long history of academic success. In 2004, Folger McKinsey was named a Maryland Blue Ribbon School of Excellence and recognized as a National Blue Ribbon School in 2005.

As Severna Park continued to grow, more schools were added.

Prior to 1959, a Severna Park student who wished to continue his or her education past eighth grade had to attend Annapolis High School, which was then located in downtown Annapolis on Green Street.

“If you were a high school student or a junior high student in the '50s, you would go to Severna Park Elementary School and get on a bus, and the bus would take you to Annapolis Junior High and Annapolis Senior High School,” Jay said.

In 1959, the Severna Park Junior-Senior High School was opened at the intersection of Benfield and Robinson roads. In fewer than 10 years, however, growing enrollments led to a new junior high school – now Severna Park Middle School – being built, and the original school became Severna Park High School.

Benfield Elementary was completed in the early 1960s and later became the first school in Severna Park to be recognized as a National Blue Ribbon School (2001). Oak Hill Elementary opened in 1971.

A 22-room brick mansion that previously served as a private residence and then a restaurant, Wroxeter on the Severn was converted to a school in 1947 by Hall Duncan. The teachers were military veterans.

“My seventh-grade teacher was a guy by the name of Admiral Coney. He was a World War II vet,” Jay recalled. “He was a

captain of a destroyer, and a Japanese kamikaze plane with two 500-bombs on either wing crashed into his ship. Only one bomb went off and killed 149 of his crew members. My eighth-grade teacher was a [prisoner of war] in Malaysia during World War II, also. Those were cool guys.”

Wroxeter eventually declared bankruptcy, and to fill the void, Chesapeake Academy was started by former Wroxeter teachers Pat Troy, Louise Sivy, Ethel Rew and Helen Braun in 1980.

“We felt that the Wroxeter program had a lot of great elements in it – particularly at the elementary level – and we wanted to see that continue,” Troy said.

Chesapeake Academy had about 200 students from preschool through fifth grade when it merged with Severn School’s student body of about 600 middle and high-schoolers in 2013.

Today, parents have more options than ever for educating their kids. St. Martin’s-in-the-Field was an area kindergarten in 1957, and in 1999, it expanded to elementary and middle school grade levels. St. John the Evangelist opened in 1959. And for higher education, students can attend Anne Arundel Community College, which was established in 1961.

The educational landscape has been altered drastically since Jay attended Severna Park High as a member of its first class in 1959. During that time, kids were grouped into general, secretarial and academic categories – predetermined before students even got to the school.

“The academic ones were all kids that were hopefully headed for college,” Jay said. “The secretarial ones – during that time when we were there, a woman was a nurse, teacher or a secretary, that was it. You didn’t have a choice. But they had these big rooms full of typewriters, they all took shorthand. I think for general, you weren’t required to take a language; maybe Algebra 2 was as far as your math went. No calculus. No chemistry. No physics.” ■

ELEMENTARY SCHOOLS

Arnold Elementary School

Principal: Shauna Kauffman
95 Joyce Lane East
Arnold, MD 21012
410-757-4400

Belvedere Elementary School

Principal: Tara Lambden
360 Broadwater Road
Arnold, MD 21012
410-975-9432

Benfield Elementary School

Principal: Susan Myers
365 Lynwood Drive
Severna Park, MD 21146
410-222-6555

Broadneck Elementary School

Principal: Cheryl Cox
470 Shore Acres Road
Arnold, MD 21012
410-222-1680

Folger McKinsey Elementary School

Principal: Lenora Fox
175 Arundel Beach Road
Severna Park, MD 21146
410-222-6560

Jones Elementary School

Principal: James Whisman
122 Hoyle Lane
Severna Park, MD 21146
410-222-6565

Oak Hill Elementary School

Principal: Deneen Houghton
34 Truckhouse Road
Severna Park, MD 21146
410-222-6568

Severna Park Elementary School

Principal: Lorie Barnes
Acting Principal: Susan Barrie
6 Riggs Avenue
Severna Park, MD 21146
410-222-6577

Shipley's Choice Elementary School

Principal: Beth Burke
310 Governor Stone Parkway
Millersville, MD 21108
410-222-3851

MIDDLE SCHOOLS

Magothy River Middle School

Principal: John Noon
241 Peninsula Farm Road
Arnold, MD 21012
410-544-0926

Severn River Middle School

Principal: Richard Tubman
241 Peninsula Farm Road
Arnold, MD 21012
410-544-0922

Severna Park Middle School

Principal: Dennis Kelly
450 Jumpers Hole Road
Severna Park, MD 21146
410-647-7900

HIGH SCHOOLS

Broadneck High School

Principal: Rachel Kennelly
1265 Green Holly Drive
Annapolis, MD 21409
410-757-1300

Severna Park High School

Principal: Patrick Bathras
60 Robinson Road
Severna Park, MD 21146
410-544-0900

CAREER AND TECHNOLOGY EDUCATION

Center of Applied Technologies North

Principal: Joseph Rose
800 Stevenson Road
Severn, MD 21144
410-969-3100

Center of Applied Technology South

Principal: Adam Sheinhorn
211 Central Avenue, East
Edgewater, MD 21037
410-956-5900

COLLEGES

Anne Arundel County Community College

President: Dr. Dawn Lindsey
101 College Parkway
Arnold, MD 21012
410-777-2222

St. John's College

President: Panayiotis "Pano" Kanelos
60 College Avenue
Annapolis, MD 21401
410-263-2371

SERVICE ACADEMY

Naval Academy

Superintendent: Vice Admiral Sean Buck
121 Blake Road
Annapolis, MD 21402
410-293-1000

PRIVATE SCHOOLS AND PRESCHOOLS

A Child's Garden

Program Director: Lisa Herbst
515 Baltimore-Annapolis Boulevard
Severna Park, MD 21146
410-647-2300

**Annapolis Area Christian School
Lower School
(Annapolis campus)**

Principal: Elizabeth Williams

710 Ridgely Avenue
Annapolis, MD 21401
410-846-3504

Lower School (Severn campus)

Principal: Karl Graustein

61 Gambrills Road
Severn, MD 21144
410-846-3505

Middle School

Principal: Benjamin Peddicord

716 Bestgate Road
Annapolis, MD 21401
410-846-3506

Upper School

Interim Principal: Jason Burrell

109 Burns Crossing Road
Severn, MD 21144
410-846-3507

**Archbishop Spalding
High School**

President: Kathleen Mahar

8080 New Cut Road
Severn, MD 21144
410-969-9105

Arnold Christian Academy

Principal: Kelly Hurd

365 Jones Station Road
Arnold, MD 21012
410-544-1882

**Asbury Community Christian
Preschool & Clubhouse**

Preschool Director: Vickie Whitley

78 Church Road
Arnold, MD 21012
410-757-7113

Celebree School of Pasadena

Director: Leslie Bundy

8105 Catherine Avenue
Pasadena, MD 21122
410-439-0989

Celebree School of Severna Park

Director: Tiffany Mills

456 Ritchie Highway
Severna Park, MD 21146
410-421-5125

Chesapeake Montessori School

Head of School: Robb Wirts

**Main Campus
(Ages 18 months to 12 years)**
30 Old Mill Bottom Road, North
Annapolis, MD 21409
410-757-4740

Upper Campus (Ages 12 to 15)

1344 Ritchie Highway
Arnold, MD 21012
410-757-4740

Divine Mercy Academy

Founder: Ali Ghaffari

8513 St Jane Drive
Pasadena, MD 21122
410-705-0778



**In-Person
& Virtual
Instruction**
for Grades Pre-K4 - 8
in a Caring,
Catholic Community



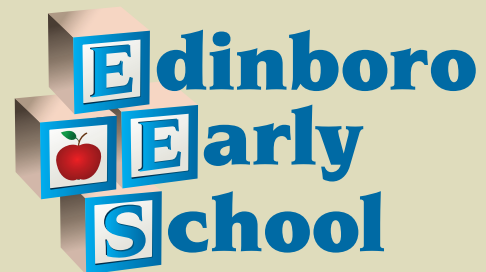
Inquire today!

410-766-7130 | msladeschool.com

Conveniently located near the intersection of Route 100 and I-97

OCC# 40382

Pre-K 2 & Pre-K 3 Programs Open!



**Proudly Serving
Severna Park For 32 Years**

**Nursery School - Child Care - Pre-K
Before & After Care - Summer**

- Childcare Age 2
- Nursery School for Age 3
- Pre-K for Age 4
- Kindergarten for Age 5
- Before & After Care - Thru Age 7

**Kindergarten Full Day
(Early Admission Option)
Talented & Gifted Programs**

*Maryland State
Department of
Education approved
curriculum for Nursery
School and Kindergarten*

410-544-2476

380 Jumpers Hole Road, Severna Park, MD 21146
www.edinboroearyschool.org

Edinboro Early School

Director: Suellen Gerbracht
380 Jumpers Hole Road
Severna Park, MD 21146
410-544-2476

Elvaton Christian Academy

Pastor: Christopher Rice
8422 Elvaton Road
Millersville, MD 21108
410-647-3224

The Goddard School of Arnold

Owners: Mina and Neelam Patel
1 East Joyce Lane
Arnold, Maryland 21012
410-544-0310

The Goddard School of Millersville

Owner: Dipti Singh
8539 Veterans Highway
Millersville, MD 21108
410-987-2892

Grannie Annie's Child Care & Learning Center

Owners: Ann Golueke and Ruthi Claytor
2 Carvel Court
Pasadena, MD 21122
410-255-0478

The Harbour School

Executive Director: Linda Jacobs
1277 Green Holly Drive
Annapolis, MD 21409
410-974-4248

Indian Creek School

Head of Upper School: Matthew McCormick
Head of Lower School: Jennifer Malachowski
1130 Anne Chambers Way
Crownsville, MD 21032
410-849-5151

Key School

Head of School: Matthew Nespole
534 Hillsmere Drive
Annapolis, MD 21403
410-263-9231

KinderCare Learning Center, Arnold

Center Director: Sheri Magez
283 Peninsula Farm Road
Arnold, MD 21012
410-544-2338

KinderCare Learning Center, Severna Park

Center Director: Collette Barnes
488 Jumpers Hole Road
Severna Park, MD 21146
410-647-7424

Monarch Academy

Principal: Rachel Amstutz
2000 Capital Drive
Annapolis, MD 21401
410-934-1444

Monsignor Slade Catholic School

Principal: Alexa Cox
120 Dorsey Road
Glen Burnie, MD 21061
410-766-7130

Naval Academy Primary School

Director: Robyn Green
74 Greenbury Point Road
Annapolis, MD 21402
410-757-3090

Our Shepherd Lutheran Church Preschool

Preschool Director: Nickki Wiles
400 Benfield Road
Severna Park, MD 21146
410-647-1658

Rockbridge Academy

Headmaster: Roy Griffith
680 Evergreen Road
Crownsville, MD 21032
410-923-1171

Severna School

Head of School: Doug Lagarde
Lower School
1185 Baltimore-Annapolis Boulevard
Arnold, MD 21012
410-647-7700

Middle/Upper School

201 Water Street
Severna Park, MD 21146
410-647-7700

Severna Park Children's Centre

Director: Judy Trippett
144 Ritchie Highway
Pasadena, Maryland 21122
410-647-3504

Severna Park United Methodist Church Nursery School

Director: Heidi Taflan
731 Benfield Road
Severna Park, MD 21146
410-987-8339

St. John the Evangelist School

Principal: Casey Buckstaff
669 Ritchie Highway
Severna Park, MD 21146
410-647-2283

St. Martin's-in-the-Field Episcopal School

Head of School: Jamey Hein
375-A Benfield Road
Severna Park, MD 21146
410-647-2759

Sunny Montessori

Director: Zhihua Chang
8615 Fort Smallwood Road
Pasadena, MD 21122
410-360-0000

Temple Beth Shalom Religious School

Director: Tracey Greenberg
1461 Baltimore-Annapolis Boulevard
Arnold, MD 21012
410-757-0552

Wee Lad & Lassie

Program Director: Lisa Herbst
1281 Baltimore-Annapolis Boulevard
Arnold, MD 21012
410-647-2178



During a 60th anniversary celebration in October 2017, former Jones Elementary teachers visited the school to share insight about the past. Mary Coates (above) was both a student and later a kindergarten teacher at Jones.



ST. MARTIN'S *-in-the-field*
EPISCOPAL SCHOOL

An Education for Good

Visit us and experience our engaging in-person learning environment and our inclusive Episcopal community.



An independent school in Severna Park, MD serving students from Preschool - Grade 8.

410.647.7055 | smartinsmd.org



SEVERNA PARK COMMUNITY CENTER

Gather. Play. Grow. Thrive.

GATHER your family & friends.

PLAY with heart.

GROW together.

THRIVE in body & spirit!



www.spcommunitycenter.org
623 Baltimore-Annapolis Boulevard
Severna Park, MD 21146
410.647.5843

Woods Child Development Center

611 Baltimore-Annapolis Blvd.
Severna Park, MD 21146
410-647-9168

SPECIAL NEEDS SCHOOLS

Cisco Center

Executive Director:
Cisco Nochera
350 Baltimore-Annapolis Blvd.
Severna Park, MD 21146
410-647-1503

Ruth Parker Eason School

Principal: Amy Guerke
648 Old Mill Road
Millersville, MD 21108
410-222-3815

The Summit School

Executive Director:
Joan Mele-McCarthy
664 East Central Avenue
Edgewater, MD 21037
410-798-0005



THE CARPET AND AIR DUCT MAN

443-452-6003

WE PROVIDE A TOTAL SOLUTION FOR YOUR HOME AND BUSINESS!

- Carpet sales, installation, cleaning and repair
- Flooring sales, installation, service and repair
- Hardwood sales, installation, sanding and refinishing
- Ceramic tile floor cleaning
- Furniture and upholstery cleaning
- Air duct cleaning
- Dryer vent cleaning and repair
- Mold remediation
- 24 Hour flood and fire response, water extraction and clean up
- Maid services

CALL TODAY FOR YOUR FREE ESTIMATE OR TO SCHEDULE AN APPOINTMENT.

THE CARPET AND AIR DUCT MAN IS YOUR BEST "ONE STOP" SERVICE PROVIDER.



DUCT CLEANING SOLUTIONS

Regular duct and dryer vent cleaning is essential to your health and safety and your equipment's maintenance and lasting performance. We provide superior services!



CUSTOM SOLUTIONS

We can meet all your custom flooring needs. Our installers are the best in the business! Revived flooring and a custom carpet runner make a spectacular presentation!



CLEANING SOLUTIONS

Our experienced Technicians have impressive skills and can often bring "life" back to carpet and upholstered furniture. Regular, professional cleaning is essential to maintaining and even extending the life of your carpet and furniture! Our cleaning rates are extremely competitive, and we don't use "bait and switch" tactics. With us you get full-service cleaning!



REFINISHING SOLUTIONS

Sanding and refinishing hardwood floor restores beauty to tired and worn out floors! We can often customize the finish color to your specification!



Here's Johnny!

7108 FT. SMALLWOOD RD.
CURTIS BAY, MD 21226
thecarpetman.jf@gmail.com

the Cottage

JEWELRY ~ GIFTS ~ APPAREL



Thank you
for voting us
**BEST GIFT
SHOP**
for 9 years
in a row!



Come See the
Fun, New Trends
for 2021!



Pantone
Color
of the
Year!

**Illuminating
Yellow**

Top 5 Favorites From Julie Vos!



1
*Colette
Delicate
Station
Necklace*

*Paris Demi
Hinge Cuff*



2

3
Savoy Statement Hoop



4

*Savoy
Demi
Link
Bracelet*



5

*Colette
Pearl
Bangle*

PARK PLAZA | SEVERNA PARK, MD | 410.647.6742
SHOPTHECOTTAGE.COM |   @SHOPTHECOTTAGESP



KAREN M. AUTHEMENT ATTORNEY AT LAW

*A Caring, Dedicated and Experienced Attorney
Providing Quality and Value in Legal Services.*

The KMA Law Office is a full service law firm that assists its clients with all their legal needs especially:



*Estate
Planning:*

Significant life events, require periodic review of your existing Estate Planning documents. The KMA Law Office can assist you with preparing your Wills, Trusts, Powers of Attorney, Advance Directives, and Estate Administration Probate.

*Personal
Injury:*

We specialize in work injury claims and auto collisions. We work extensively with insurance companies, medical providers and others involved to resolve personal injury cases.

*"...extremely diligent,
hard-working and honest."*

*Big Firm Services With
Small Firm Personal Attention*

Schedule Your Consultation Today
to see if our Simple Will Package is right for you!



Let us help you create
your outdoor

Dream Space

Visit Our Website for Our Monthly Specials



www.FenceAndDeckConnection.com

FOR A FREE DESIGN CONSULTATION

CALL 410-757-5511

CHOOSE THE BEST

- Lifetime Structural Warranty
- Incredible Financing Offers
- Award Winning Customer Service
- Locations in Annapolis & Millersville

AWARD WINNING & HIGHLY ACCLAIMED



MHIC#45780



BUILDING LIFELONG CLIENTS THROUGH OUR COMMITMENT TO EXCELLENCE

BULLDOG Schwinn & Sports

405 Ritchie Hwy, Severna Park, MD 21146

410-544-6453

Sales, Service and Repair

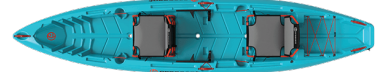
www.bulldogschwinn.com



- Bicycles
- Kayaks
- Paddle Boards
- Field Hockey
- Lacrosse
- Accessories

The Only...

- Independent Schwinn Dealer in Anne Arundel County
- Crescent Kayak Dealer in MD
- White Knuckle Dealer in MD



ANNE ARUNDEL COUNTY GOVERNMENT AGENCIES

Public Safety

Animal Care and Control

Administrator: Robin Catlett

411 Maxwell Frye Road
Millersville, MD 21108
410-222-8900

Detention Facilities

Acting Superintendent: Michael Borgese

131 Jennifer Road
Annapolis, MD 21401
410-222-7374

Emergency Management

Director: Preeti Emrick

7480 Baltimore-Annapolis Boulevard
Glen Burnie, MD 21061
410-222-0600

Fire

Chief: Trisha Wolford

8501 Veterans Highway
Millersville, MD 21108
410-222-8300

Police

Chief: Amal Awad

8495 Veterans Highway
Millersville, MD 21108
410-222-8050

Sheriff's Office

Sheriff: Jim Fredericks

8 Church Circle
Annapolis, MD 21401
410-222-1570

State Attorney Office

State's Attorney: Anne Colt Leitess

8 Church Circle, Suite 200
Annapolis, MD 21401
410-222-1740

Education

Anne Arundel Community College

President: Dawn Lindsay

101 College Parkway
Arnold, MD 21012
410-777-2222

Anne Arundel County Public Library

CEO: Skip Auld

5 Harry S Truman Parkway
Annapolis, MD 21401
410-222-7371

Anne Arundel County Public Schools

Superintendent: Dr. George Arlotto

2644 Riva Road
Annapolis, MD 21401
410-222-5000

UMD Extension Service

97 Dairy Lane
Gambriells, MD 21054
410-222-3900

Land Use

Administrative Hearings

44 Calvert Street
Annapolis, MD 21401
410-222-1266

Board of Appeals

Chairman: Anthony Lamartina

44 Calvert Street, Room 160
Annapolis, MD 21401
410-222-1119

Inspections and Permits

Director: Greg Africa

2664 Riva Road
Annapolis, MD 21401
410-222-7790

Planning and Zoning

Planning and Zoning Officer: Steve Kaii-Ziegler

2664 Riva Road
Annapolis, MD 21401
410-222-7450

Public Works

Director: Chris Phipps

2662 Riva Road
Annapolis, MD 21401
410-222-7500

Recreation and Parks

Director: Rick Anthony

1 Harry S Truman Parkway
Annapolis, MD 21401
410-222-7300

Housing

Community Development Corporation

Executive Director: Kathleen Koch

2666 Riva Road, Suite 210
Annapolis, MD 21401
410-222-7600

Housing Commission

7485 Baltimore-Annapolis Blvd.
Glen Burnie, MD 21601
410-222-6200

Business Support

Economic Development Corporation

President/CEO: Ben Birge

2660 Riva Road, Suite 200
Annapolis, MD 21401
410-222-7410

Minority Business Enterprise Program

Central Services Officer: Christine Romans

2660 Riva Road
Annapolis, MD 21401
410-222-7672

Workforce Development

President/CEO: Kirkland Murray

613 Global Way
Linthicum, MD 21090
410-424-3240

Health and Human Services

Aging and Disabilities

Director: Karrisra Gouin

7320 Ritchie Highway
Glen Burnie, MD 21061
410-222-4257

2666 Riva Road
Annapolis, MD 21401
410-222-4257

Health Department

Health Officer: Nilesh Kalyanaraman

3 Harry S Truman Parkway
Annapolis, MD 21401
410-222-7095



Mental Health

Executive Director: Adrienne Mickler

Crisis Response Director: Jennifer Corbin

1 Harry S Truman Parkway, Suite 101
Annapolis, MD 21401
410-222-7858

Partnership for Youth and Families

1 Harry S Truman Parkway
Annapolis, MD 21401
410-222-7423

Social Services

Director: Canitra White

80 West Street
Annapolis, MD 21401
410-269-4500

Transportation

Transportation Officer: Ramond Robinson

2664 Riva Road
Annapolis, MD 21401
410-222-7440

Administration and Support

Budget

Budget Officer: Chris Trumbauer
44 Calvert Street
Annapolis, MD 21401
410-222-1222



ELECTED OFFICIALS

County Officials

Anne Arundel County Executive

Steuart Pittman
The Arundel Center
44 Calvert Street
Annapolis, MD 21401
410-222-1821
spittman@aacounty.org

Anne Arundel County Council

Annapolis Office: 410-222-1401
Glen Burnie Office: 410-222-6890

District 1: Sarah Lacey
slacey@aacounty.org

District 2: Allison Pickard
allison.pickard@aacounty.org

District 3: Nathan Volke
nathan.volke@aacounty.org

District 4: Andrew Pruski
andrew.pruski@aacounty.org

District 5: Amanda Fiedler
amanda.fiedler@aacounty.org

District 6: Lisa Rodvien
lisa.rodvien@aacounty.org

District 7: Jessica Haire
jessica.haire@aacounty.org

Anne Arundel County Board of Education

President: Melissa Ellis
County Council District 4
410-533-7940
mkellis@aacps.org

Vice President: Dana Schallheim
County Council District 5
443-534-2660
dschallheim@aacps.org

Candace Antwine
County Council District 1
443-510-4640
cantwine@aacps.org

Robert Silkworth
County Council District 2
443-534-5766
rsilkworth@aacps.org

Corine Frank
County Council District 3
410-693-7458
clfrank@aacps.org

Joanna Bache Tobin
County Council District 6
410-570-0361
jtobin@aacps.org

Michelle Corkadel
County Council District 7
410-507-9204
mcorkadel@aacps.org

Student Member: Drake Smith
(Through June 30, 2021)
443-603-7754
dmsmith8@aacps.org

Anne Arundel County State's Attorney

Anne Colt Leitess
Circuit Courthouse
8 Church Circle, Suite 200
Annapolis, MD 21401
410-222-1740
asksao@aacounty.org

Clerk of the Circuit Court

Scott Poyer
Circuit Courthouse
8 Church Circle
Annapolis, MD 21401
410-222-1397
aaclerkadmin@mdcourts.gov

Register of Wills

Lauren Parker
Circuit Courthouse
8 Church Circle, Suite 403
Annapolis, MD 21401
410-222-1430

Sheriff

Jim Fredericks
Circuit Courthouse, 8 Church Circle
Annapolis, MD 21401
410-222-1571
shwebmail@aacounty.org

State Representatives (DISTRICT 33)

Senator Ed Reilly
James Senate Office Building, Room 316
11 Bladen Street
Annapolis, MD 21401
410-841-3568, 301-858-3568
edward.reilly@senate.state.md.us

Delegates

Heather Bagnall
House Office Building, Room 160
6 Bladen Street
Annapolis, MD 21401
410-841-3406, 301-858-3406
heather.bagnall@house.state.md.us

Michael Malone

House Office Building, Room 164
6 Bladen Street
Annapolis, MD 21401
410-841-3510, 301-858-3510
michael.malone@house.state.md.us

Sid Saab

House Office Building, Room 157
6 Bladen Street
Annapolis, MD 21401
410-841-3551, 301-858-3551
sid.saab@house.state.md.us

Federal Representatives (DISTRICT 4)

Senators

Chris Van Hollen
Anne Arundel County Office
60 West Street, Suite 107
Annapolis, MD 21401
410-263-1325
www.vanhollen.senate.gov/contact

Ben Cardin

Baltimore Office
Tower I, Suite 1710
100 South Charles Street
Baltimore, MD 21201
410-962-4436
www.cardin.senate.gov/contact

House of Representatives

Anthony Brown
Anne Arundel County Office
2666 Riva Road, Suite 120
Annapolis, MD 21401
410-266-3249
www.anthonymbrown.house.gov/contact

Central Services

Central Services Officer: Christine Romans
2660 Riva Road
Annapolis, MD 21401
410-222-7644

Elections

6740 Baymeadow Drive
Glen Burnie, MD 21060
410-222-6600

Finance

Controller: Karin McQuade
44 Calvert Street
Annapolis, MD 21401
410-222-1144

Information Technology

Director: Rick Napolitano
44 Calvert Street
Annapolis, MD 21401

Personnel

Acting Personnel Director: Anne Budowski
2660 Riva Road
Annapolis, MD 21401
410-222-7595



WRIGHT ORTHODONTICS

www.orthowright.com

Benjamin Wright, DMD, LLC



THANK YOU For Voting Us Best Orthodontic Practice



10 Consecutive Years!

410-544-0072

479 Jumpers Hole Road, Suite 203 | Severna Park, MD 21146

www.orthowright.com

**THE
MATT
WYBLE
TEAM**

CENTURY 21 New Millennium

**#1 CENTURY 21 Team in Maryland
#11 CENTURY 21 Team in USA**

833.MWTEAM1 (833.698.3261)

TheMattWybleTeam.com

info@themattwybleteam.com



DELEGATE HEATHER BAGNALL

**MARYLAND GENERAL ASSEMBLY
DISTRICT 33**

*Thank you for the honor
of serving you!*

WWW.HEATHERBAGNALL.COM

BY AUTHORITY: CITIZENS FOR HEATHER BAGNALL, LUKE TUDBALL, TREASURER.

**HELPING
YOU CREATE,
CULTIVATE AND
STRENGTHEN
YOUR HUMAN-
ANIMAL BOND.**



ALLY4PETS

Registered Veterinary Technician (RVT) with 30 years experience providing in home care for your pets. Services provided include pet sitting, dog walking, care for pets with chronic medical conditions including chronic kidney failure, diabetes, and allergies. Also provide regular, medicated and Furminator bathing to help with shedding. In home nail trims, anal gland expressions, ear cleaning and tooth brushing. Any type of medication can be administered (Oral, Injections, Fluids, Topical). Overnight in home stays are offered. Also can provide consultations for many areas of pet care and pet transportation services.

Can also provide talks for schools for career days or groups on subjects they are concerned about.

Member of



443-343-0137

www.ally4pets.com



Registered Veterinary Technician licensed with the Maryland Veterinary Medical Board
Licensed, Bonded and Insured



Annual Events Make Severna Park Special

The Independence Day parade is one of many events that make this community a wonderful place for people to live.

Whether they are packing the Severna Park High School auditorium to witness the theatrics of entertainers performing in Rock 'N' Roll Revival or painting a float and subsequently parading down Benfield Road, the residents of Severna Park engage in several events that are unique to the community.

WINTER

Rock 'N' Roll Revival

A show that always sells out, Rock 'N' Roll Revival shines a spotlight on Severna Park High School's talented singers and dancers as they perform songs from different genres and eras. The show started in 1989. More than 30 years and 800 songs later, it is still a must-see spectacle.

SPRING

Crab Soup Cook-Off

Which restaurant has the best Maryland crab soup and which has the best cream of crab soup? The Lake Shore-Severna Park Rotary Club invites food lovers to answer that question for themselves during this annual fundraiser.

Burgers and Bands

Some of the area's best bands convene at Severna Park Taphouse (during May in past years) to raise funds for suicide prevention. Since 2017, Burgers and Bands has sought to show people in Severna Park that no matter their age, they are not alone. There is help, there is hope and there are resources.

Shop Local Fun Fiestal

The Shop Local Fun Fiesta has been held at all times of the year, most recently in May 2019, to showcase local businesses and organizations and to remind consumers why those groups are vital to Severna Park.

SUMMER

Fourth of July Parade

Each year since 1975, Severna Park families have lined their sidewalks with lawn chairs, blankets and patriotic outfits during the Fourth of July parade. Young children and pets are no exception, as they also don red, white and blue garb to commemorate the holiday. Organized by the Greater Severna Park and Arnold

Chamber of Commerce, the parade brings together the best aspects of the community as neighbors celebrate their favorite clubs and organizations, businesses and youth groups that stroll two miles from St. Martin's-in-the-Field Episcopal Church on Benfield Road to Woods Memorial Presbyterian Church on B&A Boulevard.

Earleigh Heights Carnival

Rides, concessions and games are all part of the Earleigh Heights Volunteer Fire Company's annual carnival, usually held in July. The carnival supplies fun while bringing in much-needed funds to keep the department in operation.

National Night Out

Held on the first Tuesday in August, the popular community-police event came to Anne Arundel County's Eastern District in 2015. Earleigh Heights Volunteer Fire Company serves at the perfect venue, providing families with food, games, K-9 demonstrations and opportunities to meet local police officers, firefighters, sheriff's deputies and first responders.

Continued on page 26

Annual Events Make Severna Park Special



SPAN Turkey Trot

Continued from page 25

FALL

Kinder Farm Park Fall Harvest Festival

With farm animals, music and a variety of crafts (like pumpkin painting and scarecrow making), the Fall Harvest Festival at Kinder Farm Park is a popular October celebration.

SPAN Turkey Trot

Roughly a week before feasting on Thanksgiving dinner, runners and walkers unite at Kinder Farm Park for a 5K run or one-mile walk to support the nonprofit SPAN. Funds help local families in need with utility shutoffs, evictions, and medical/prescription copays.

Jingle Bell Hayride

Before fall officially ends, Kinder Farm Park hosts a December day of festive hayrides, roasted marshmallows and chances to see the park's decorated farmhouse.

Christmas Tree Lightings

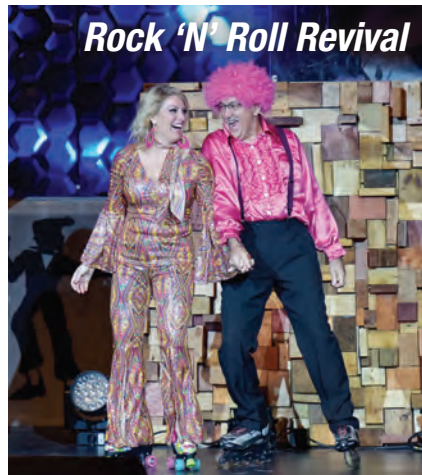
It's not the holiday season in Severna Park until the town gathers to illuminate trees and welcome Santa Claus. The Greater Severna Park and Arnold Chamber of Commerce usually holds an early December tree lighting at its office, celebrating with music, cookies and hot chocolate. A few years ago, the Merchants of Park Plaza planned its own event with music, dance performances and a special visit from Saint Nick.

Taste & Sip

This Greater Severna Park and Arnold Chamber of Commerce event provides an evening of food, wine and music where guests can sample goods from local restaurants, bakeries and liquor stores. With networking, live holiday entertainment and a silent auction, Taste & Sip has plenty to offer. ■



Jingle Bell Hayride



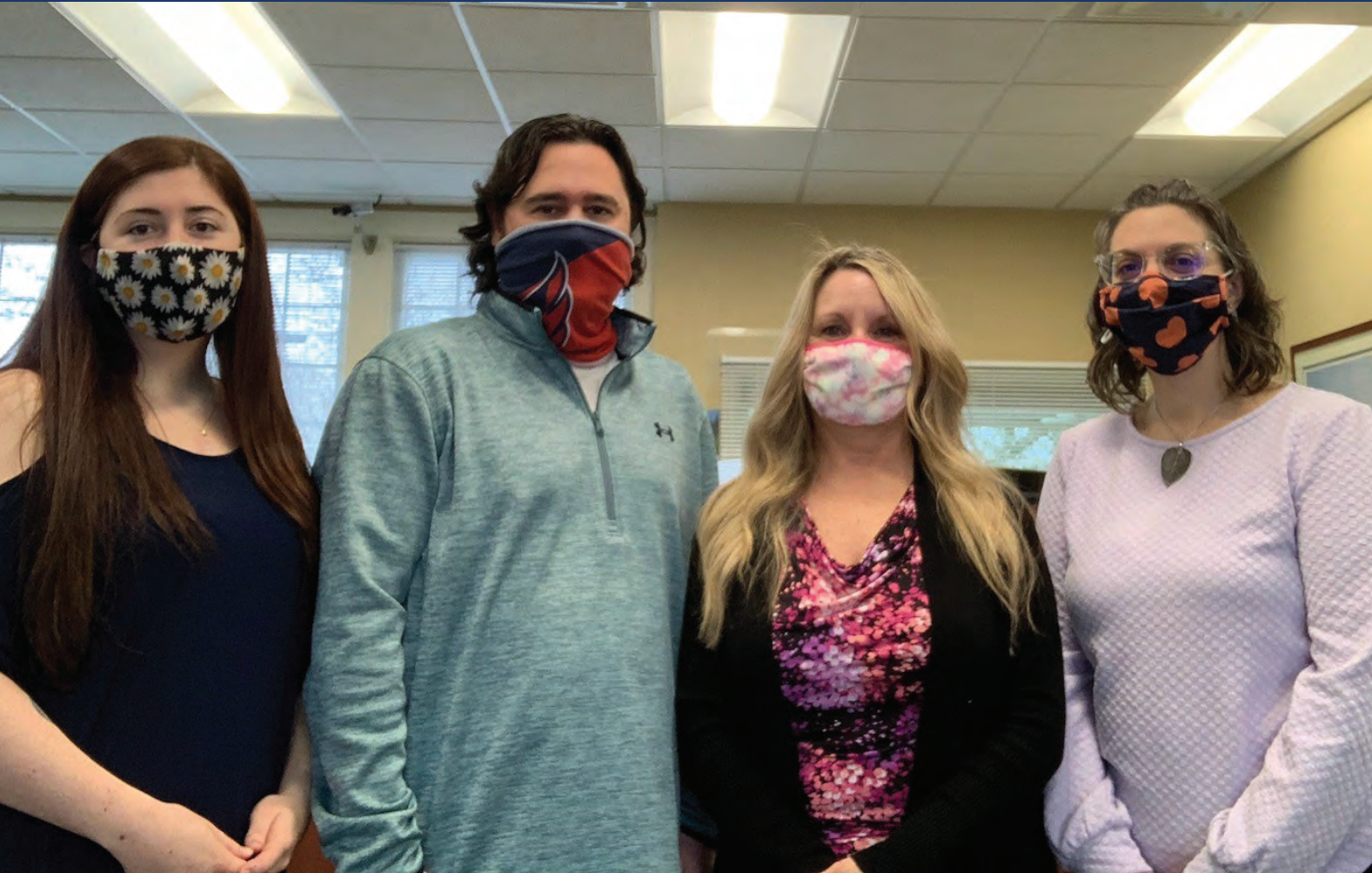
Rock 'N' Roll Revival



Taste & Sip

YOUR COMMUNITY BANK

Where your money is invested back into the community



As a true community bank, we build lasting relationships while giving you a trusted local banking experience.

Visit [ArundelFederal.com](https://www.ArundelFederal.com) to experience better banking today!



50 W. McKinsey Road
Severna Park, MD 21146

410.544.9600



Member
FDIC

CLUBS AND ORGANIZATIONS

Asbury Church Assistance Network (ACAN)

Executive Director:
Margo Arnoux
429 Asbury Drive
Severna Park, MD 21146
410-647-3461
www.acansevernapark.org

Aglow International - Severna Park

President: Phyllis Brown
pmowen.brown@gmail.com
www.mdeastaglow.weebly.com/severna-park

American Legion Post 175

Post Commander: Chris Jensen
832 Manhattan Beach Road
Severna Park, MD 21146
410-544-2066
www.legionpost175.org

Anne Arundel County Association of Realtors

CEO: Robert Johnston
1521 Ritchie Highway, Suite 300
Arnold, MD 21012
410-544-4554
www.aacar.com

Association for Severna Park Improvement, Renewal and Enhancement Inc. (ASPIRE)

Chair: Krista Latchaw
550 Ritchie Highway 271
Severna Park, MD 21146
410-647-5003
www.severnaparkaspire.com

Bello Machre

President/CEO:
Dr. Robert Ireland
7765 Freetown Road
Glen Burnie, MD 21060
443-702-3000
info@bellomachre.org
www.bellomachre.org

Broadneck Elks Lodge 2608

Exalted Ruler: Danielle Chapman
931 Lake Drive
Arnold, MD 21012
410-757-2243
broadneckelks@verizon.net

Burgers and Bands For Suicide Prevention

Founder: Ann Brennan
413 Headquarters Drive, Suite 4
Millersville, MD 21108
443-679-4916
www.burgersandbands.org

Chartwell Foundation Inc.

1 Chartwell Drive
Severna Park, MD 21146
410-987-0400
www.chartwellfoundation.org

Chesapeake Bay Foundation

6 Herndon Avenue
Annapolis, MD 21403
1-888-SaveBay
www.cbf.org

District 33 Democratic Club

President: Alexandra Matiella Novak
d33dems@gmail.com
www.d33dems.org

Elvaton Recreation Association

P.O. Box 918
Severna Park, MD 21146
410-417-8027
help@elvatonrec.org

Fight For Phoebe

Founder: Dave Ward
fightforphoebeinc@gmail.com
www.fightforpheobe.com

Friends of Anne Arundel County Trails

President: Jack Keene
P.O. Box 464
Severna Park, MD 21146
friendsofaatrails@gmail.com
www.friendsofaatrails.org

Friends of Kinder Farm Park

President: Carrie Fielder
1001 Kinder Farm Park Road
Millersville, MD 21108
contact@kinderfarmpark.org
www.kinderfarmpark.org

Good Neighbors Group

President: Julie Shay
550 M Ritchie Highway, 202
Severna Park, MD 21146
443-333-9255

Greater Annapolis Y in Arnold

Vice President of Operations:
EJ Amyot
1209 Ritchie Highway
Arnold, MD 21012
410-544-2525
edwardamyot@ymaryland.org
www.ymaryland.org/locations/arnoldy

Greater Severna Park Athletic Association

Green Hornets
P.O. Box 643
Severna Park, MD 21146
greenhornets@verizon.net
www.greenhornets.org

Greater Severna Park and Arnold Chamber of Commerce

CEO: Liz League
1 Holly Avenue
Severna Park, MD 21146
410-647-3900
info@gspacc.com
www.gspacc.com

Greater Severna Park Council

President: Maureen Carr York
P.O. Box 786
Severna Park, MD 21146
mcarr-york@att.net
gspcouncil.org

Hospice of the Chesapeake

John and Cathy Belcher Campus
90 Ritchie Highway
Pasadena, MD 21122
410-987-2003
info@hospicechesapeake.org
www.hospicechesapeake.org

Kiwanis Club of Severna Park

Lieutenant Governor:
Krista Latchaw
P.O. Box 72
Severna Park, MD 21146
443-618-3420
rachelfjacobs@gmail.com
www.severnaparkkiwanis.org

Magothy River Association

President: Paul Spadaro
P.O. Box 550
Severna Park, MD 21146
president@magothyriver.org
www.magothyriver.org

National Alliance on Mental Illness (NAMI) Anne Arundel County

Executive Director: Fred Delp
P.O. Box 309
Arnold, MD 21012
443-569-3498
info@namiaac.org

Opportunity Builders Inc.

CEO: Marsha Legg
8855 Veterans Highway
Millersville, MD 21108
410-787-0700
mlegg@obiworks.org

Orphan Grain Train

Interim Branch Manager:
Ron Phipps
621 East-West Boulevard
Millersville, MD 21108
410-267-7593
info@md-orphangraintrain.org
www.ogt.org

Pasadena Sportfishing Group Inc.

www.pasadenasportfishing.com

Partners In Care

President/CEO: Mandy Arnold
8151-C Ritchie Highway
Pasadena, MD 21122
410-544-4800

Rebuilding Together Anne Arundel County

President: Elisha Harig-Blaine
819 Ritchie Highway, Suite 2000
Severna Park, MD 21146
information@rebuilding-togetherraac.org
www.rebuildingtogetherraac.org

Rotary Club of Lake Shore-Severna Park

President: John Clark
1930 Main Avenue
Pasadena, MD 21122
lakeshorerotary@gmail.com
www.rotarycluboflakeshore.org

Severn River Association

Executive Director: Tom Guay
P.O. Box 146
Annapolis, MD 21404
443-569-3556
info@severnriver.org

Severn River Lions Club

President: Chris Werth
P.O. Box 118
Severna Park, MD 21146
src@severnriverlions.org
www.severnriverlions.org

Severna Park Adult Chess Club

Rob Robinson
belgian22@msn.com

Serving People Across Neighborhoods (SPAN)

400 Benfield Road
Severna Park, MD 21146
410-647-0889
spanhelps@yahoo.com
www.spanhelps.org

Severna Park Bridge Club

Proprietor: Doug Golden
548 Benfield Boulevard
Severna Park, MD 21146
www.severnaparkbridge.com

Severna Park Community Center

Executive Director: Sarah Elder
623 Baltimore-Annapolis Blvd.
Severna Park, MD 21146
410-647-5843
www.spcommunitycenter.org

Severna Park Elks Lodge 2482

Secretary: Kenneth Roussey
160 Truck House Road
Severna Park, MD 21146
410-647-2482
kroussey@verizon.net

Severna Park Knights of Columbus

Grand Knight: SK Theodore Dietz
335 Governor Ritchie Highway
Severna Park, MD 21146
410-647-3413
knights3413@gmail.com

Severna Park Model Railroad Club

3 Riggs Avenue
Severna Park, MD 21146
spmrcclub@gmail.com

Severna Park Republican Women's Club

President: Amy Leahy
P.O. Box 1037
Severna Park, MD 21146
sprepublicansmd@gmail.com
www.sprwc.org

SPY Swim Team

President: Dean Dreibelbis
623 Baltimore-Annapolis Blvd.
Severna Park, MD 211464
410-315-7779
www.spyswimteam.org

Stoney Creek Fishing and Hunting Club

9090 Fort Smallwood Road
Pasadena, Maryland 21122
www.scfhclub.org

Toast of Severna Park Toastmasters

President: Dr. Mansur Hasib
1 Holly Avenue
Severna Park, MD 21146
www.severnapark.toastmastersclubs.org

Walk the Walk Foundation

Co-founder: Kim Mitchell
P.O. Box 351
Millersville, MD 21108
410-980-1908
walk@wtwf.org
wtwf.org

YWCA Annapolis

1517 Ritchie Highway, Suite 201
Arnold, MD 21012
410-626-7800
volunteer@ywcaaac.org
www.annapolisywca.org

SENIOR CENTERS

Annapolis Senior Center

119 South Villa Avenue
Annapolis, MD 21401
410-222-1818

Arnold Senior Center

44 Church Road
Arnold, MD 21012
410-222-1922

O'Malley Senior Activity Center

1275 Odenton Road
Odenton, MD 21113
410-222-6227

O'Malley Senior Center Annex

1270 Odenton Road
Odenton, MD 21113
410-222-0140

Pasadena Senior Center

4103 Mountain Road
Pasadena, MD 21122
410-222-0030

Pascal Senior Center

125 Dorsey Road
Glen Burnie, MD 21061
410-222-6680

ASSISTED LIVING AND NURSING HOMES

Assisted Living Well

271 West Pasadena Road
Millersville, MD 21108
410-315-8807

Brightview Severna Park

469 Jumpers Hole Road
Severna Park, MD 21146
410-220-6958

FutureCare Chesapeake

305 College Parkway
Arnold, MD 21012
410-647-0015

Genesis Eldercare Severna Park

24 Truck House Road
Severna Park, MD 21146
410-544-4220

HeartLands Assisted Living at Severna Park

715 Benfield Road
Severna Park, MD 21146
410-729-1600

Household of Angels Assisted Living

118 Arundel Beach Road
Severna Park, MD 21146
410-991-2554

Jones Acres

1349 Jones Station Road
Arnold, MD 21012
410-974-4747

Kris-Leigh Assisted Living

831 Ritchie Highway
Severna Park, MD 21146
410-975-9919

Park View at Severna Park

180 Ritchie Highway
Severna Park, MD 21146
410-544-3411

Severna Park Center

310 Genesis Way
Severna Park, MD 21146
410-544-4220

Spring Arbor of Severna Park

345 Ritchie Highway
Severna Park, MD 21146
410-544-7774

Sunrise of Severna Park

43 West McKinsey Road
Severna Park, MD 21146
410-544-7200

ADULT DAY SERVICES

ARC Central Chesapeake Region

931 Spa Road
Annapolis, MD 21401
410-269-1883

Providence Center Inc.

370 Shore Acres Road
Arnold, MD 21012
410-766-2212

Woods Adult Day Care Inc.

8227 Cloverleaf Drive, Suite 300
Millersville, MD 21108
410-987-0360

**Abundant
Life Korean
Baptist Church**

Pastor: David Brown
506 Benfield Road
Severna Park, MD 21146
410-647-0765

Anchor Baptist Church

Pastor: Joel Porcher
320 West Pasadena Road
Millersville, MD 21108
410-647-9614

**Asbury Town Neck United
Methodist Church**

Pastor: James Bishop
429 Asbury Drive
Severna Park, MD 21146
410-647-3461

Bay Life Church

Senior Pastor: Brian Miller
506 Benfield Road
Severna Park, MD 21146
410-787-9893

**Broadneck Evangelical
Presbyterian Church**

Senior Pastor: Brian March
235 Bay Dale Drive
Arnold, MD
410-626-8122

**Christ Evangelical
Lutheran Church**

Pastor: Bob Lehman
8249 Jumpers Hole Road
Millersville, MD 21108
410-647-0340

CrossPointe Church

Lead Pastor: Ed O'Mara
365 Jones Station Road
Arnold, MD 21012
410-544-1880

Elvaton Baptist Church

Pastor: Chris Rice
8422 Elvaton Road
Millersville, MD 21108
410-647-5333



Gloria Dei Lutheran Church

Pastor: Shawn Brandon
461 College Parkway
Arnold, MD 21012
410-544-3799

**Hope for the
Living Ministries**

*Founder and Senior Pastor:
Jerome E. Howard Sr.*
959 Baltimore-Annapolis Boulevard
Severna Park, MD 21146
410-245-9213

Lighthouse Baptist Church

Pastor: Paul Arcand
195 Ritchie Highway
Severna Park, MD 21146
410-977-9389

**New Walk
Community Church**

Pastor: Dr. Sean Wheatley
836 Ritchie Highway
Severna Park, MD 21146
410-544-5505

**Our Shepherd
Lutheran Church**

Pastor: Earl Jansen
400 Benfield Road
Severna Park, MD 21146
410-647-1658

**Rose of Sharon Sabbath
Apostolic Church**

Pastor: Monroe Page Sr.
62 Magothy Bridge Road
Severna Park, MD 21146
410-647-8566

**Severna Park
Baptist Church**

Lead Pastor: Dave Brown
506 Benfield Road
Severna Park, MD 21146
410-647-0765

Severna Park Church of God

Senior Pastor: Henry Watts
233 Ritchie Highway
Severna Park, MD 21146
410-431-5011

**Severna Park Evangelical
Church**

Pastor: Dan Smith
110/114 Ritchie Highway
Pasadena, MD 21122
410-544-5013

**Severna Park United
Methodist Church**

Lead Pastor: Ron Foster
731 Benfield Road
Severna Park, MD 21146
410-987-4700

**Silas First Baptist Church
of Severna Park**

Pastor: Jesse Young
91 West Earleigh Heights Road
Severna Park, MD 21146
410-544-1842

**St. John the Evangelist
Roman Catholic Church**

Pastor: Erik Arnold
689 Ritchie Highway
Severna Park, MD 21146
410-647-4884

**St. Martin's
in-the-Field
Episcopal Church**

Rector: Matthew Hanisian
375 Benfield Road
Severna Park, MD 21146
410-647-248

**Temple Beth
Shalom**

Rabbi: Ari Goldstein
1461 Baltimore-Annapolis Boulevard
Arnold, MD 21012
410-757-0552

**Trinity Bible
Church**

Pastor: Stephen Mitchell
99 Truck House Road
Severna Park, MD 21146
410-647-4561

**Wayman Good
Hope African
Methodist
Episcopal Church**

Pastor: Joseph R. Brown Sr.
100 Hoyle Lane
Severna Park, MD 21146
410-647-4867

**Woods Memorial
Presbyterian Church**

*Pastors: Dr. Susan Dewyngaert
and Jacob Snowden*
611 Baltimore-Annapolis Boulevard
Severna Park, MD 21146
410-647-2550



MILLERSVILLE
Animal Hospital

**Where
Pets Are
Family!**

**Now
Welcoming
New
Clients**



410-987-8300 | 401 Headquarters Drive, Millersville, MD 21108
MillersvilleAH@Gmail.com | MillersvilleAnimalHospital.com
facebook.com/MillersvilleAnimalHospital
@millersvilleanimalhospital



EAST
REMODELING

- **ROOFS**
- **SIDING**
- **KITCHENS**
- **DECKS**
- **BASEMENTS & MORE**

410-500-2266

50EastRemodeling.com

MHIC# 102366



Soaking Treasures

- Monthly subscription boxes \$35
- 4-6 goodies shipped to your home each month
- We specialize in bath bombs, bath products and candles!

**Your
One Stop
Bubble Shop!**

www.soakingtreasures.ecwid.com

443-694-2188 - Cari Facebook.com/soakingtreasures Follow us on Instagram

A HEALTHY HOME IS A CLEAN HOME.

We use **professional-grade cleaning products** to disinfect surfaces and help combat the germs that can be lurking around your home.

Trust the cleaning professionals

- Affordable Price
- No Contracts
- Professional Quality
- 24-hour Clean Warranty
- Call For a Free Estimate

MOLLY MAID OF CENTRAL ANNE ARUNDEL COUNTY
410-349-8080




MOLLY MAID™
a neighborly company

Family Owned & Operated for 22 Years!

\$100 VALUE \$25 OFF YOUR FIRST 4 CLEANINGS

New customers only. Cannot be combined with any other offers. One per household. Weekly and alternate-weekly customers only. Expires 12/31/2021. Other restrictions may apply.

MOLLY MAID OF CENTRAL ANNE ARUNDEL COUNTY

Visit us at MollyMaid.com to learn more.

©2020 Molly Maid, Inc. Each franchise independently owned and operated. Molly Maid is a member of the Service Brands International family.



SEVERNA PARK AND ARNOLD PARKS AND TRAILS

PARKS

Andy Smith Equestrian Center
584 Broadneck Road
Arnold, MD 21012
410-508-8813

Arnold Park
1325 Jones Station Road
Arnold, MD 21012
410-222-7317

Bay Head Park
1661 Bay Head Road
Annapolis, MD 21409
410-222-7315

Belvedere Park
340 Broadwater Road
Arnold, MD 21012
410-222-7317

Broadneck Park
613 College Parkway
Annapolis, MD 21409
410-222-7317

Cape St. Claire Park
1387 Cape St. Claire Road
Annapolis, MD 21409
410-222-7317

Cattail Creek Natural Area
430 Ritchie Highway
Severna Park, MD 21146
410-222-7317

Cool Pond Park
463 McBride Lane
Severna Park, MD 21146
410-222-7317

Cypress Creek Park
11 Cypress Creek Road
Severna Park, MD 21146
410-222-7317

Elvaton Park
311 Dogwood Road
Millersville, MD 21108
410-222-7317

Garcelon Athletic Complex at Kinder Farm Park
215 Gali Sanchez Way
Millersville, MD 21108
410-222-7317

Kinder Farm Park
1101 Kinder Farm Park Road
Millersville, MD 21108
410-222-6115

Mago Vista Park
832 Mago Vista Road
Arnold, MD 21012
410-222-7317

Shipley's Choice Park
300 Governor Stone Parkway
Millersville, MD 21108
410-222-7317

Spriggs Farm Park
965 Bayberry Drive
Arnold, MD 21012
410-222-7317

TRAILS

Baltimore and Annapolis Trail
13.3 miles from Glen Burnie to Annapolis
51 W. Earleigh Heights Road
Severna Park, MD 21146
410-222-6141

Broadneck Peninsula Trail
2.4 miles from Bay Dale Drive to College Parkway East
College Parkway and Green Holly Drive
Annapolis, MD 21409
410-222-6141

The History Of Kinder Farm Park

Kinder Farm Park is named for a German immigrant family who made multiple land purchases in Millersville beginning in 1898. Over the next 50 years, Gustave Kinder and his younger brother, Henry Kinder, turned initial purchases of land into a successful 600-acre agricultural operation. Gustave sold his property to Henry in the early 1940s and another brother, Herman, sold his remaining property to Henry and his sons in 1952.

Initial business endeavors included selling lumber from trees on their property, selling ice locally from their ponds, and developing a local milk business from 15 dairy cattle.

The Kinders, like most farmers in Anne Arundel County, worked at "truck farming" even though produce was then transported by horse and wagon. They grew fruits and vegetables for sale at markets in the Baltimore region until the late 1940s. Refrigeration on trains and trucks and in stores made local farms less competitive as produce could be brought from farms farther south at an earlier date in the growing season. The local farmers could not compete, resulting in reduced profit.

The Kinders were always adapting, and they adjusted their



focus to change the farm business to raising and selling hogs and turkeys and acquiring beef cattle. By the late 1940s, Henry Kinder and his four sons continued to expand their herds of beef cattle, maintaining 1,100 to 1,700 head of cattle until the late 1970s. Raising cattle became a successful and prosperous venture with large sales to the Baltimore Union Stockyard. The large number of cattle resulted in many acres being designated to the growth of corn on the farm property.

By 1960, the farmland was operated by the four sons of Henry Sr.: Eddie, Henry Jr., August and Albert. The brothers gradually began selling parcels of property to housing developers and the Anne Arundel County Board of Education for school construction.

In 1979, the four sons of Henry Sr. decided to sell the remaining 288 acres to Anne Arundel County to help preserve farm history and open space in an ever-developing region. Those acres are now the land we know as Kinder Farm Park.

This article comes from the Anne Arundel County website at www.aacounty.org. ■

“The Baltimore and Annapolis (B&A) Trail is the backbone of the Severna Park community.”



The B&A Trail Offers Accessibility, Community Pride

By Haley Weisgerber

Stretching a little over 13.25 miles and connecting Dorsey Road in Glen Burnie to Winchester Road, just north of Route 50, the Baltimore and Annapolis (B&A) Trail is the backbone of the Severna Park community.

Built along the former B&A Railroad, the B&A Trail is one of the few conversion trails in the nation that was designed for multiple uses. In Severna Park, the trail has become a meeting place, an outdoor fitness hub, and during the COVID-19 pandemic, a necessary escape.

The trail connects with the BWI trail that circles the Baltimore Washington International Airport, the Jonas Catherine Green Park in Annapolis, and the partially constructed Broadneck Trail that connects Anne Arundel County Community College and Sandy Point State Park. The trail makes Anne Arundel County accessible for commuting, exercise and entertainment.

“It’s close to libraries, there are places to eat, there are

convenience stores where you can get food and water,” said Friends of Anne Arundel County Trails (FOAACT) President Jack Keene. “It’s a very user-friendly kind of trail and you can ride as far or short as you choose. That makes it very attractive.”

Another attractive feature is the trail’s many amenities to increase community interest. The Planet Walk is presumably the trail’s most popular of those offerings.

The Planet Walk is an almost five-mile-long stretch along the trail that features a scale model of the solar system. Each of the planets are spaced proportional to their distance from the sun. The experience explores facts about the solar system and educates guests as they walk or bike along the trail. The experience starts with the sun behind the Harundale Plaza in Glen Burnie and ends at the ranger station near Earleigh Heights.

The idea was proposed by the FOAACT’s first president and founding member, Stan Lebar. “He was an engineer at

Westinghouse, which is now Northrop Grumman,” Keene said. “He was obviously very interested in the space program, and in our solar system in general, so he spurred us to get involved in this.”

Lebar’s vision came to life and has stood on the trail for over a decade. Once a year, the FOAACT partners with NASA employees, researchers and the Astronomy Club at Anne Arundel County Community College to host an interactive Planet Walk, where guests walk through the exhibit alongside experts to ask questions and delve into the experience.

The FOAACT also hosts a free concert series at the Hatton-Regester Green Park in Severna Park in the spring. The event usually brings in a crowd of about 100 people and features small, local artists.

“We have two audiences,” Keene said. “One is the audience that are regulars, who are plugged in and know the schedule, and the others are the serendipity visitors who are

going by on the trail and just stopped to enjoy the music.”

Placed alongside the B&A Trail is a series of flowerbeds that are leased, planted and maintained by community members. This program is a product of the FOAACT and the Anne Arundel County Department of Recreation and Parks (AACDRP) wanting to increase community involvement and creating a more inviting atmosphere along the trail.

“I think they just add an element of interest to people who are going up and down the trail,” Keene said. “They add color, and many people are interested in what people plant. It’s just another feel-good feature that makes it an inviting environment.”

The AACDRP has a program called the Trailblazers, where a group of volunteers ride the trail to assist people with flat tires, directions and other needs they may have. Among those volunteers was Tom Caraker.

“Some people referred to

Continued on page 34



The B&A Trail Offers Accessibility, Community Pride

Continued from page 33

Tom as the mayor of the trail,” Keene said. “You can hardly go out on the trail without seeing Tom. The trailblazers keep track of their mileage, and Tom would literally ride thousands of miles a year.”

Caraker died a few years ago, but the FOAACT and AACDRP are working on a memorial. The flagstone plaza will be located behind The Big Bean, Caraker’s favorite resting spot along the trail.

“We’re working with a number of merchants in that shopping plaza to come up with a design that will meet the needs of their customers that also meet the needs of folks on the trail,” Keene said. “We hope it will be a real community meeting spot for Severna Park.”

Aside from being one of the most accessible features in the county and offering a scenic alternative to Ritchie Highway, the B&A Trail connects people, encourages healthy living and brings Severna Park together. ■

The Baltimore & Annapolis Railroad

Before being converted to a hiking and biking trail, the stretch of property was the Baltimore & Annapolis Railroad, an indispensable part of Anne Arundel County’s growth, according to many local historians. “The existence of the B&A Short Line Railroad was the defining factor to the course of development of northern Anne Arundel County and the Broadneck Peninsula,” Matthew George, former trails historian, described in “History of B&A Railroad” (www.aacounty.org). “The communities of Glen Burnie, Severna Park, Arnold, Linthicum and others all came into existence because of the presence of this railroad.”

In the days before development came to Anne Arundel County, the area along the rivers and bay was nearly all farmland, and travel was mostly water-based. A group

of New England promoters chartered the Baltimore & Annapolis Railroad in 1880, and later that year, construction began. It took several years for the tracks to be built, but the morning of May 9, 1887, dawned with many passengers boarding engine No. 1 for the maiden run of the short line railroad from Baltimore to Annapolis.

In the years that followed, the freight and passenger services of the B&A Railroad brought much traffic through the area. Passenger trains eventually ran every half-hour from 5:00am to almost midnight. Farmers and others living in the country had access to city amenities, while urbanites who wanted an escape from the hustle and bustle could enjoy an easy commute.

Summer homes and cottages became popular, and towns sprang up throughout

the land between Baltimore and Annapolis. Meanwhile, state legislature invested in the growth and popularity of commuting by building roads – Baltimore-Annapolis Boulevard had been completed in 1910, and Governor Ritchie Highway in 1939.

Development increased after World War II, when soldiers returning from overseas began to buy lots to build houses and settle down with their families. They invested in cars as well, and soon enough, the suburban lifestyle that had been made possible by the B&A Railroad began to lead to the end of the passenger service.

By 1949, the formerly busy B&A Short Line was hardly apt for use. After 63 years of faithfully serving commuters, the B&A Railroad made its final passenger run on February 5, 1950. ■



Get Outside!

Helping our neighbors build a better, healthier and more beautiful world

Himmel's Landscaping Serving all of Anne Arundel County:

- Landscape design and installation
- Restoration and reforestation
- Spring and fall cleanup
- Maintenance and planting packages
- Patios, firepits, walls and walkways
- Sodding, seeding, top dressing, and grading
- Pots and containers for all seasons and occasions
- Custom built raised bed gardens and chicken coops
- And more!



Landscaping Services

Chesapeake Native Trees and Shrubs

Pollinator Friendly Plants

Visit Himmel's and let our friendly and knowledgeable staff help you discover:

- An extensive and affordable plant and flower selection
- Beautiful and unique statuary, pottery and décor items
- Bulk mulch, stone, and soils available for pick-up or delivery
- Rare and ornamental trees and shrubs, interesting natives
- Organic soils, fertilizers and pest management solutions
- Vegetable and herb seeds and transplants
- Grass seed, sod, and low-maintenance lawn alternatives
- Classes and events



Don't forget to check out our
fun and friendly chickens!

HOURS:

Monday - Saturday 8AM - 5PM

Sunday 9AM - 4PM

WWW.HIMMELSGARDENCENTER.COM

410-255-7730

4374 Mountain Road | Pasadena, MD 21122

SUPPORT Your Newspaper

Shop **LOCAL**

Eat **LOCAL**

READ **LOCAL**

SHOP Our Advertisers
and say

"I saw it in the **Voice!"**



**The *Severna Park Voice* has served
our community for 40 years!**

Locally owned and operated



THE BLACKWALL
BARN & LODGE



*Just a Few
Miles from
Typical*

329 Gambrills Road
Gambrills, MD, 21054
(410) 317-2276

barnandlodge.com



Drink Responsibly.
Drive Responsibly.

Thanks for choosing us!
"The Best Liquor Store on Leelyn Drive!"

Serving Severna Park for 90 Years

GOSKA'S LIQUORS

Check out our Monthly Specials at www.goskas.com

501 LEELYN DR. • SEVERNA PARK
410.647.4041 • WWW.GOSKAS.COM

Visit us on facebook

Websites | Custom Programming | Databases | E-Commerce

Do you want to spend more time working on your business and less time worrying about your website?

Call us at 443-302-4008.

We make websites work!™

Scan me

Visit us at ablespark.com/spv.

Thinking of moving? Let's get you home.



At First Home Mortgage, we provide the mortgage you need to make "Home" happen, but *it's the people who are always "First"*

Brad Fowler
NMLS ID# 455859
703.254.6658

Pat Hunter
NMLS ID# 2070811
443.974.3817

Mike Archer
NMLS ID# 476343
443.226.2030

Marshall Feldman
NMLS ID# 141786
410.279.3529

Tony Leighty
NMLS ID# 1525341
443.623.3882



SEVERNA PARK BRANCH
Branch NMLS ID 875197



This is not a guarantee to extend consumer credit. All loans are subject to credit approval and property appraisal. First Home Mortgage Corporation NMLS ID #71603 (www.nmlsconsumeraccess.org)

Severna Park Post World War II



Above: Severna Park was established in 1906 when Oscar Hatton bought 183 acres, attained from the land given by John Linstead to each of his daughters — Georgie Linstead and Elizabeth Boone. **Below:** The Boro family owned a general store, pictured here in the 1920s.



By F. Scott Jay

Members of the Severna Park Museum are sharing their memories of historical landmarks around Severna Park in a limited six-part series. Past stories have been featured in the Voice's monthly edition.

In August 1945, World War II was over and our sleepy little village was about to wake up. Severna Park was frozen in time - nothing had changed in many years due to the 1929 depression and the outbreak of WWII.

Let's begin our reading tour of Severna Park as it was in days gone by: There was no Chartwell, no West Severna Park. There were no stoplights, no junior or high schools. The elementary school went only to the sixth grade; after that, students were bused to Annapolis.

The main thoroughfare in Severna Park was Baltimore and Annapolis (B&A) Boulevard. There was a smattering of business up and down the road: Winkelmeyer's Feed and Coal Yard was at the north end; moving southward, Haise's gas station was located at the corner of McKinsey Road and B&A Boulevard; Boro's and Giddings' grocery stores were poised on opposite corners. Further south were Woods Presbyterian and St. John catholic churches. Then, near the intersection of B&A Boulevard and Cypress Creek Road came Street's Restaurant, which was the local watering hole where neighbors gathered to share local news and information about soldiers overseas. The neighbors created a newsletter called *The Tap-Loid* featuring articles and stories from Severna Park for over 122 subscribers in the armed services. Down the street from Street's Restaurant was another favorite with the locals, Feeser's Restaurant, which served the best crab cakes around.

The B&A Railroad stopped every hour at the Severna Park station, which also served as the community post office. Across from the station were Dawson's Store and the elementary school. On Riggs Avenue was the Severna Park Phone Exchange where Lydia Howard was the operator. She knew if the school was open on snowy days, and where our mothers were playing cards.

Benfield Road (now Evergreen Road) was a curvy country road that ran out to Crain Highway (now Route 97). The route was thickly wooded almost the entire way on both sides except for a few houses, Bernan's farm and Milhausen's Tavern at Jumpers Hole Road.

By the end of WWII, there were three communities in Severna Park proper:

Round Bay started out as a resort owned by the B&A Railroad. A beach on the Severn River, a hotel and a dance pavilion were the main attractions. The railroad even ran a rail spur down Old Station Road with a boardwalk for easy access to the beach.

In 1910, Norvell Chapman and two partners bought 90 acres from the railroad to develop the community of Round Bay. At first, the lots sold primarily to Baltimoreans for summer homes, but they soon turned to year-round residences when the owners realized it was a 30-minute commute to Baltimore by train.

Linstead on the Severn was developed from a parcel of farmland owned by John Linstead. The farm comprised 274 acres of land purchased

Continued on page 40

Charting A Course for Life's Legal Journeys

The team at Frame & Frame has been serving the legal needs of our community for **over 65 years**. We serve as a trusted advisor for thoughtful planning, and as the same go-to guide, during times of crisis. Our entire team works with you to develop strategies that will serve your unique needs.

Our free legal guides provide answers to common questions and help educate you to begin the process of preparing your family for every eventuality and take the weight off your shoulders.

Download
Your Free Guides



Wills & Estate Planning
Probate | Elder Law

Family Law | Guardianship

Personal Injury | Auto Accidents



**FRAME
&
FRAME**
ATTORNEYS AT LAW

Charting a course for life's legal journeys.

Schedule Your Consultation Now!
Pasadena | Annapolis | Stevensville
410.255.0373
FrameAndFrame.com

Severna Park Post World War II

Continued from page 39 in 1817 for \$12 per acre. In 1856, John Linstead divided the land into three equal parcels consisting of 91.5 acres each and gave them to his three children: John Jr., Georgie and Elizabeth.

John Jr. received lot No. 1, now known as Linstead, and the old brick farmhouse built around 1758. The land was sold in 1906 to the Riggs brothers from Baltimore. When the last brother died in 1942, the land was purchased by Joseph Groh and Frederick Kuethe. They developed it into 177 lots selling for \$1,600 to \$9,000 for waterfront lots and \$1,000 to \$3,500 for interior lots.

When the war ended in 1945, returning veterans bought the lots and in many cases built their own houses.

Severna Park was established in 1906 when Oscar Hatton bought 183 acres, attained from the land given by John Linstead to each of his daughters — Georgie Linstead and Elizabeth Boone.

Hatton bought the land to develop it into a “high-class community” on the Severn River, now known as Olde Severna Park. He put in his own utility companies, laid out all the roads, and with the help of 12-year-old George White, he planted hundreds of trees.

In 1914, Roland Teel, an educator from Annapolis, came to Severna Park and started Severn School as a preparatory school for the military academies. The school flourished under his guidance, acquiring boarders from all around the United States and abroad.

The three communities thrived with the returning of the Greatest Generation. War-weary families were anxious to get on with their lives. They picked out their lots, built their houses and started their families. They were young, hardworking and enthusiastic about life.

The communities offered summer carnivals, swim meets, dances at the beaches; community beaches were open to all. Several men came together and built a fleet of small sailboats called Severn #1 Design. They raced one another in their custom-built sailboats on the weekends. Each community formed its own softball team competing on Severn School's fields during the summer. Friendly relationships formed and life-long friendships grew and continue to this day.

There were countless people who contributed to the growth and prosperity of Severna Park like Skip Carr, local real estate broker and civic leader; Arthur Giddings, an immigrant roof thatcher turned developer and business owner; and Lucy Landers, an educator who taught at Severna Park Elementary School for 50 years; and numerous others.

Many changes have occurred since 1945, but Severna Park continues to reinvent itself to fit the times and to accommodate the needs of the community.

Severna Park Museum Inc. is a 501(c)(3) non-stock corporation sponsored by the Winkelmeyer family. Monetary donations are welcome at 528 Melrose Lane, Severna Park, MD 21146. ■

Green Hornets Teaches Valuable Life Skills Beyond Sports

In the 2001 Major League Baseball draft, former Green Hornet athletes Gavin Floyd and Mark Teixeira were selected fourth and fifth, respectively, shining a light on a youth sports organization that may have been little-known outside of Maryland. The reality, though, was that the Green Hornets had produced athletes of high talent and character for several years following its humble beginnings in 1949.

Harvey Garcelon and Paul Bigby started the first Green Hornet teams with a few boys and whatever money they had in their pockets. The Green Hornet budget was whatever families could afford. Those first few years, the boys played wherever they could find space. Any vacant lot or farm field became a makeshift ball field. To find opponents, teams traveled throughout Eastern Maryland.

As the years passed, more sports were added and more children participated. As interest grew, so did the organization. In the 1950s, the organization was incorporated as the Greater Severna Park Athletic Association Inc.

During those early years, dedicated volunteers like Garcelon, Bigby and Bob Pascal, a former All-American football player from Duke University, continued to guide the program by scheduling fields, assigning coaching staffs and raising money so local children could continue to stay fit and enjoy the benefits of team sports. In the 1970s, the Hornets added soccer, lacrosse and girls sports to the program.

Garcelon served the Severna Park community by helping to inspire others to share his vision for 35 years. His tenacity led to the development of Kinder Farm Park as a recreational site for Green Hornet sports. He helped design the playing fields and facilities at the county park.

To be a Green Hornet was to be a part of a family.

Matt Griswold ascended the Green Hornet ranks with friend Scott Neuberger, with both outfielders eventually getting a taste of the minor leagues.

"Green Hornets was such a great program compared to what we saw in some of the teams we played," Griswold said. "Also, we were able to play together such a long time

Continued on page 42

File Photos by Colin Murphy

Green Hornets provides kids ages 3 to 18 the opportunity to be involved in any of 11 sports at varying levels of competition.



Green Hornets Teaches Valuable Life Skills Beyond Sports



Continued from page 41

that we developed camaraderie, starting with Green Hornets and continuing through Severna Park Legion and Severna Park High School. Being on those teams from a young age, we became like family and we brought that to future teams. It wasn't like that in the minor leagues."

There are many other notable Green Hornets turned professional athletes. In basketball, the list includes former Duke University guard and current Marquette head coach Steve Wojciechowski, former University of Virginia star Norman Nolan, and guard Michael Jennings of Penn State. During Super Bowl 50, former football standout Jordan Norwood notched the longest punt return in Super Bowl history on a 61-yard scamper. Kyle Dixon retired in 2016 as a three-time Major League Lacrosse champion and three-time All-Pro.

Floyd pitched for 13 years in the major leagues. Teixeira became one of only five major league switch-hitters with more than 400 home runs, joining Carlos Beltran, Chipper Jones, Eddie Murray and Mickey Mantle.

"I loved Green Hornets; playing basketball, soccer and baseball," Teixeira said in November 2019 when he was elected to the Maryland State Athletic Hall of Fame. "As a father now, I really appreciate the coaches, the parents, and everyone who spends so much time making Green Hornets the great organization it was and still is."

Garcelon died in 1999 at the age of 86, but his memory and vision lives on, with Green Hornets under the leadership of former MLB pitcher Josh Banks.

Each year, Green Hornets serves more than 6,000 area children ages 3 to 18 and provides the opportunity for kids to be involved in 11 sports at varying levels of competition.

Also contributing to the organization's success is the dedication of more than 600 volunteers who help kids learn the rules of each game, build confidence and self-esteem, develop social skills and gain an understanding of teamwork, coordination and athletic skills.

"It teaches you a lot of life lessons," said Mark Budzinski, a former Green Hornet, professional outfielder and current first base coach for the Toronto Blue Jays. "You fail a lot in this game and things happen in life that don't always go your way, and it's about how you deal with that and how you keep pushing and driving and pursuing your goals and dreams the best you can." ■



SEVERNA PARK AUTOMOTIVE

Book our Courtesy Car — Now Available while your is in for repairs!

Foreign & Domestic Auto Repair
Complimentary Local Shuttle Service Available

www.SevernaParkAutomotive.com
410-647-8322
 499 Ritchie Highway
 Severna Park, MD 21146
 Monday-Friday 7am-7pm

FRANK TAGLIENTI
 NO TEAMS. JUST TAG
 410-647-8000 | 410-440-0824-Cell

Reasons to "TALK TO TAG"

- 1) One on One personal service. No groups or teams, you work directly with **ME!**
- 2) **Strong Negotiating** skills
- 3) **Aggressive Marketing** of your property
- 4) Average Days on the Market in 2020 = **9 days**
- 5) My List Price vs Sales Price in 2020 was **100.59%**
- 6) **33+ Years** of Experience put to work for you
- 7) **#1 Individual Agent** in Berkshire Hathaway's Severna Park Office

Like me on Facebook

BERKSHIRE HATHAWAY HomeServices

PenFed Realty

To view my resume and thousands of homes, visit my website:
www.FrankTaglienti.com

Higgins & Friends
PET SITTING
Taking care of your pets since 2000

- Cat Care**
- Special Needs Pets**
- Dog Walking**
- Daily/Weekly**
- Birds/Pocket Pets**
- Cat Grooming**

Special needs visits include Medications, Injections and Fluid Therapy

443-994-7795
 Jill Weissenbach - Veterinary Technician
www.higginsandfreinds.com

Chesapeake Bay AQUATIC PHYSICAL THERAPY

Our therapists have over 60 years of combined experience to help you recover faster.

We offer both land based and aquatic therapy.

Accepting Most Insurances
Severna Park Office
 545 Baltimore Annapolis Blvd
 410. 315.9080 | www.cbayaquapt.com

Locations in Bowie, Laurel, Reisterstown & Timonium

Work • Play • Recover... Live the Journey!

Resource Directory

A-1 Yard Service

Complete Lawn and Property Maintenance

Lawn/Yard Services

- *Leaf Removal
- *Mulching
- *Gutter Cleaning
- *Tree & Brush Removal
- *Weeding
- *Tree & Bush Trimming
- *Mowing

Hauling Services

- *Appliance Removal
- *Basements Cleaned
- *Furniture Removal
- *Debris Removed
- *Attics Cleaned
- *Yard Clean Up
- *Garages Cleaned

***HANDYMAN SERVICES *ROOF REPAIRS**

Snow Removal Services

- *Driveways
- *Sidewalks

You call - We haul!
Call TODAY for your FREE Estimate!
Randy 443-871-1088

Doggy Daycare
Animal Lodging

Training
Grooming



410-647-6516 www.fieldstoneanimalinn.com



**Remodeling, Additions,
Roofing, Waterproofing,
Handyman, Windows,
House Cleaning,
Junk Removal, Doors,
Siding, etc.**

Offering over 40+ Interior
and Exterior Services

8371 Baltimore Annapolis Blvd., Pasadena, MD 21122

www.facebook.com/aacohome

410-589-2819 | www.aacohandyman.com

Licensed #MHIC 116948 | Insured \$1 Million+ | Bonded



*Value
With
Style!*

Houck's Menswear
1382 Cape St. Claire Road
Annapolis, MD 21409
(410) 757-5500

www.facebook.com/Houcks-Menswear-307142346007108/

**SAY IT IN A
BIG WAY!**



Party Up My Yard is a yard greetings sign rental business. We thrive on bringing joy to people on their special day!

410-793-7399

www.PartyUpMyYard.com

[@partyupmyyard](https://www.facebook.com/partyupmyyard) #partyupmyyard



Mention this ad
and receive

\$5 off
Restrictions may apply.

410-987-7700

8268 Veterans Highway | Millersville, MD

www.christinajosephsalon.com

KETPLACE

If it goes on your floor, we have it!

- HARDWOOD - VINYL
- LAMINATE - TILE
- AREA RUGS
- CARPET

FAMILY FLOORS

Now a complete shop-at-home experience!

MHIC #70080

410-647-1115 • www.familyfloors.com



TRUST. *It's what I do.*

CREATING ESTATE PLANS THAT REFLECT YOUR PERSONAL VALUES AND WISHES WHILE PROVIDING FOR YOU AND YOUR FAMILY.

Law Office of Steven M. Berger, LLC
821 West Benfield Road, Suite One
Severna Park, MD 21146 • 410-777-5916
steve@bergerwills.com • www.bergerwills.com




in t

We carry everything you need to Brew Your Craft

Beer Wine Cider
Mead Hard Seltzer
Soda Kombucha
Cheese & More!

ANNAPOLIS HOME BREW
Serving the Annapolis Area and beyond since 1997
836 Ritchie Hwy Suite 19/20
Severna Park MD 21146
410-975-0990
www.annapolishomebrew.com

JUST BREW IT



Magothy Off Road

magothyoffroad.com

We Install Everything We Sell!

- Replacement Jeep Soft Tops as low as \$499 installed.
- Lift Kits
- Offroad Tires
- Bumpers
- Truck Accessories
- Tonneau Covers
- Headlights & Taillights
- Fender Flares
- LED Light Bars
- Wheels

www.magothyoffroad.com
4433 Mountain Road, Suite #1, Pasadena, MD 21122
410-437-8700

BAY AREA CPR LLC

PROFESSIONAL TRAINING AT YOUR CONVENIENCE

410-292-9215 • bayareacprllc.com

Locally owned Bay Area CPR LLC is a licensed training provider for the American Red Cross offering both Adult and Pediatric First Aid CPR AED for the lay responder and Basic Life Support for the healthcare provider. Classes are offered each month at the Severna Park Chamber of Commerce. Private classes for groups of 5 or more students are available upon request. Certificates awarded the same day. Strict COVID-19 protocols followed to ensure everyone's safety during class, this included a 1:1 ratio of students to manikins. Please visit our website for a full listing of services and upcoming community classes.



NELSON & PELURA, LLC

ACCOUNTING • TAX • ADVISORY

Specializing in
Personal & Business Tax • Financial Consultation • Valuation Services

Contact us today for a free initial consultation to see how we can help.

410-975-5565
www.npcpa.net

251 Najoles Road, Suite G
Millersville, MD 21108




SEVERNA PARK VOICE

SERVING OUR COMMUNITY SINCE 1981

MAR

Resource Directory

We help you grow the life you want.




DELMARVA FINANCIAL GROUP
410-216-2103
www.delmarvafinancialgroup.com
 Retirement | Investments | Estate Insurance | Tax | Lifestyle

College Parkway Center 1298 Bay Dale Drive, Suite 201, Arnold, MD 21012 | beau@delmarvafinancialgroup.com

Securities offered through Securities America, Inc., a Registered Broker/Dealer, Member FINRA/SIPC, Beau Brodeen, Registered Representative. Advisory services offered through Arbor Point Advisors, LLC, an SEC Registered Investment Advisory Firm, Beau Brodeen, Investment Advisor Representative, Arbor Point Advisors, LLC, Delmarva Financial Group and Securities America are separate entities.


LAW OFFICE OF MICHAEL L. WILSMAN



Michael L. Wilsman
Attorney at Law
 565 Baltimore-Annapolis Blvd.
 Severna Park, MD 21146
www.wilsmanlaw.com
 Phone: 410-975-9520
 Email: mwilsman@aol.com

- › Personal Injury
- › Mediations
- › Criminal Defense
- › Estate Planning
- › Family Law
- › Business Law

Waypoint Wellness Center is your waypoint to improved health and happiness. We are here to help you appreciate where you are, and guide you to where you want to go.



A waypoint is a reference point that helps us know where we are and where we are going; a destination on a journey.

Waypoint Wellness Center
waypointwellnesscenter.com
410-684-3806

Office Locations
 Linthicum, Severna Park and Annapolis, MD



Online and in-person
 Sundays at 11:00am!

**Experience God.
 Find Community.
 Fulfill Your Purpose.**

410-647-4561
www.trinitysevernapark.org

**99 Truck House Rd
 Severna Park, MD**

Make today the day you take the next step toward your financial goals.



Melanie Ferragut
 VP, Severna Park Branch Manager & Small Business Banker
 PNC-Certified Women's Business Advocate
 NMLS ID: 1229487
 (p) 410.315.6927 | (f) 410.647.4103
Melanie.Ferragut@pnc.com

PNC Bank
 596 Ritchie Highway
 Severna Park, MD 21146
 410-647-2120
www.pnc.com



2021 SUMMER YOUTH SOCCER CAMPS




HALF DAY & FULL DAY CAMPS!

Our Camps are a great place for soccer players of all levels to improve their skills, build confidence, make new friends and have FUN!
 Professional & Experienced staff!

Boys & Girls / Ages: 5-14
WWW.DENISONFUTSAL.COM

 <https://www.facebook.com/denisoncabrafutsal> @_DCFA_ Denison Cabral Futsal Academy

KETPLACE




Living With The Magic Vacations



Andrea Trelles
Travel Agent at Living With The Magic Vacations

www.livingwiththemagic.com/andrea-trelles-bio @andreaplansmagic
(443) 343-2523 andreat@livingwiththemagic.com




2021-2022 Half-day and extended day programs for children ages 3 and 4

Curriculum promotes personal, physical, cognitive, faith and social development through wide and varied experiences in literature, math, science, social studies, art, and music.

September through May schedule.
Maximum 7:1 student:teacher ratio.

Students must be fully immunized, completely potty trained, and must have turned three or four by September 1, 2021.

For details and to register, visit our webpage.
<https://severnaparkumc.org/nurseryschool/>

Severna Park United Methodist Church Nursery School
731 Benfield Rd, Severna Park, Md • 410-987-8339 • spumcns@gmail.com • MSDE Certificate of Approval #3710

SML Footwear Etc.

401 Headquarters Drive, Suite 102
Millersville, MD 21108
(443) 685-3779

www.facebook.com/smlfootwear
sockdepot.square.site

25% Off All Socks

- Insulated, Work, Diabetic, Wool, Compression, and More
- Work Boots, Rubber Boots, and Deck Boots
- Men's, Women's, and Youth

10% FIRST RESPONDER and MILITARY DISCOUNT
(in store)

WTS FINANCIAL



- Tax Preparation
- Bookkeeping
- Payroll
- Annuities
- Life Insurance

WTS Financial
2441 Mountain Road, Suite F, Pasadena, MD 21122
(443) 702-7128 info@wtsfinancial.com



NEW LIFE
ADDICTION COUNSELING & MENTAL HEALTH SERVICES



We Are Open!
Virtual Services Provided!

- Morning & Evening Intensive Treatment (IOP)
- Continuum of Care & MAT groups
- DUI/DWI Court Approved Program
- Family & Friends Education Support Group
- Women only groups
- Therapy & Meds management in conjunction with treatment
- Outpatient Detox for Opiates with Suboxone or Vivitrol
- Psychiatric Evaluations
- Anxiety, Depression & Bi-Polar treatment

For a prompt, confidential appointment, Contact us Today!
New Life is in-network with most insurances and Maryland Medicaid accepted.

4231 Postal Court • Pasadena, MD 21122
410-255-4475 | www.newlifeacs.com



Helping Neighbors In Need Since 1990

**400 Benfield Road
Severna Park
410-647-0889**

www.spanhelps.org
spanhelps@yahoo.com

Serving People Across Neighborhoods

SPY Swimming Sets High Standards For Success

The Severna Park YMCA Swim Team, known as SPY, was formed in 1976. It was managed for more than two decades by Ken Barsa, who remained SPY's head coach until 2004. Under Barsa, SPY developed its reputation as a premier competitive swimming program, with an overall record of 300-25 in dual meets, as well as dozens of district and regional championships.

The Severna Park Swim Association (SPSA) was formed in 1995 by the parents of SPY swimmers after the YMCA left the area. Under their new name, the SPSA's parent-run board developed a professional program of aquatics and swim team management, leasing its current facility from the Severna Park Community Center.

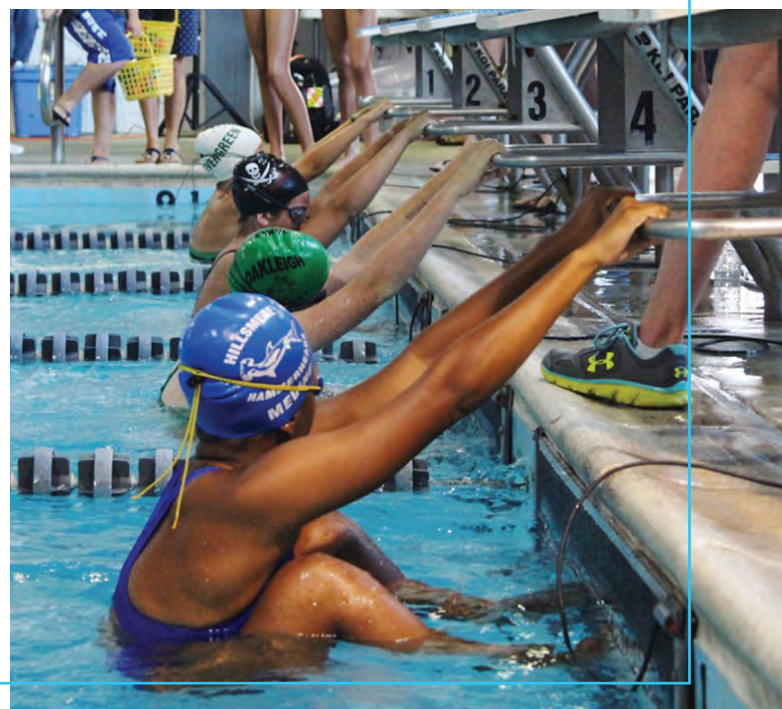
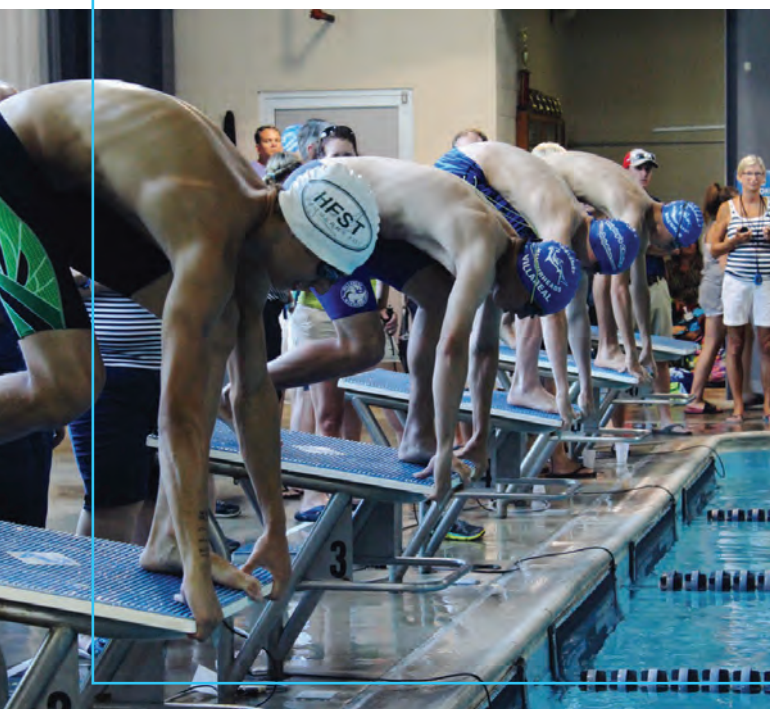
The SPY swim team members are unique in that as a YMCA team, they participate in "Y" dual, invitation-al, district and national championships for both long course and short course venues. In addition, SPY swimmers are registered as USA Swimming members

“Each year, SPY consistently has greater numbers of swimmers attending prestigious national meets, and their qualifying times get increasingly faster. The “spies,” or group of swimmers, have become a nationally known, elite swim team run by one of the most experienced and professional organizations in the region.”

and participate in USA-sanctioned invitational meets, sectionals, junior and senior championships for both long and short course formats that lead to the U.S. Open and Olympic trials.

In 2005, after assistant coaching for 15 years and three years, respectively, Jim Hutcheson and Crystee Ballard joined forces to become co-head coaches at SPY. Today, Ballard continues SPY's well-earned reputation for excellence: interest in SPY's developmental program is at an all-time high while dozens of older swimmers qualify each year for national competition in YMCA and USA Swimming short course and long course events.

Each year, SPY consistently has greater numbers of swimmers attending prestigious national meets, and their qualifying times get increasingly faster. The “spies,” or group of swimmers, have become a nationally known, elite swim team run by one of the most experienced and professional organizations in the region. ■





A Voice For Business: The Greater Severna Park And Arnold Chamber Of Commerce

Founded in 1957, the Greater Severna Park and Arnold Chamber of Commerce (GSPACC) has been a staple in the community and a powerful membership organization for businesses and nonprofits for more than six decades. It continues to grow and thrive even in the midst of the digital age. This is because the chamber values the community and members know that to maintain their unique way of life, they must live by the “shop local” initiative.

“When we shop locally and patronize local businesses, we support members of our community, help to create jobs, reduce environmental impact, and contribute to the economic health and success of our neighborhoods,” explained GSPACC CEO Liz League.

The chamber has more than 600 members and the majority are small business owners, many of whom are third and fourth generation. They have taken the risk, personally and professionally, to live the American dream. They join the chamber for opportunities to network and be part of a like-minded “family” where

they can learn from others, increase their visibility in the community, make business contacts and receive referrals, and build their credibility.

The chamber has eight popular signature events for community members to enjoy each year. These include the beloved Fourth of July parade, two Shop Local community festivals, Restaurant Week, the holiday tree lighting, Taste and Sip, the health and wellness fair, and a golf tournament.

The Early Years: “A Need For Supporting One Another”

Walter Winkelmeyer served as the chamber’s founding president and took an active role in nurturing the Severna Park community in the late 1950s, as his daughter, Betty Winkelmeyer Wells, told the *Severna Park Voice* during a 2017 interview.

“Dad could see that there was really going to be a burst of people,” Wells said. “He could see the businesspeople who were coming in — they were small, independent, not chain stores. When they got in here, he saw that there was such a

need for supporting one another.”

Walter Winkelmeyer owned a shop that sold hardware and feed, as well as coal in the winter. With the help of Bob Barranco, founder of Barranco & Sons Funeral Home, he formed the Severna Park Chamber in 1957. If she had to guess, Wells would say about 25 fellow business owners were involved when the chamber was founded.

Fees were low, covering only the cost of paper processing, and membership included everyone from storeowners to Tupperware ladies.

Many members today see the chamber as one of the reasons Severna Park thrived as a community. “The population of Severna Park was growing over the years, and more and more businesses were fulfilling the needs of people in the area,” said John Barranco, a former president of the chamber’s board of directors, whose father, Bob, opened their family business, Barranco & Sons Funeral Home, in 1960 and served as president in 1962.

“I remember my parents had groceries

Continued on page 50

A Voice For Business: The Greater Severna Park And Arnold Chamber Of Commerce



The annual Christmas tree lighting (left) and the Taste & Sip event (above) are just two of the many ways the Greater Severna Park and Arnold Chamber of Commerce brings the community together.

Continued from page 49

delivered by Listman's; there was a produce man who used to drive around; doctors would make house calls. It's changed quite a bit since then," Barranco said. "The chamber has helped businesses succeed because it's a network and it offers the opportunity to connect with others."

Walter Winkelmeyer died in 2004, but his legacy lives on as the chamber continues to grow.

"Even when the economy was rough, I knew Severna Park was always strong because the people support the merchants," Wells said, adding that the chamber's mission is every bit as relevant today as it was in decades past because it helps entrepreneurs get the exposure they need. "I know so many people now, especially women in business, who have businesses at home," she said. "They've had this dream, and you can make this dream something. You need the chamber if you're working out of your home. You don't have a storefront or a sidewalk." ■

LOCAL & FAMILY OWNED SINCE 1997



**WATER TREATMENT & WATER FILTRATION
PLUMBING • COOLERS**

FREE WATER ANALYSIS
Call (410) 757-2992

HagueWaterofMD.com/freewatertest

BOWLING CENTERS ARE THE BEST PLACES TO PARTY!!



- Company Team Building
- Birthday Parties
- Family Events

Events include bowling, use of equipment, food and drink. Galaxy bowling and music subject to availability.

Voted 2020 Best Family Entertainment

LET US CREATE HAPPY MEMORIES WITH YOU!

<p>Severna Park Lanes Duck Pin & 10 Pin 840 Ritchie Hwy Severna Park, MD 410-647-0811 GoBowlingSevernaPark.com</p>	<p>Annapolis Bowl 10 Pin 2057 Generals Hwy Annapolis, MD 410-266-0700 GoBowlingAnnapolis.com</p>	<p>Greenway Bowl 10 Pin 8246 Telegraph Rd Odenton, MD 410-551-7100 GoBowlingOdenton.com</p>
--	--	---

Now
Accepting
Patients

**CHESAPEAKE UROLOGY
IS PROUD TO
ANNOUNCE ITS NEW
OFFICE AND SURGERY
CENTER LOCATED
IN ANNAPOLIS!**

**A Beautiful New Office and Comprehensive Urologic Services
for the Men, Women and Children of Annapolis**

ANNAPOLIS OFFICE PROVIDERS



Adam J.M. Kern, M.D.
Director, Pediatric Urology, Chesapeake Urology; Dr. Adam Kern is one of the foremost fellowship-trained pediatric urologists in the Mid-Atlantic region.



Katherine Smentkowski, M.D.
Dr. Smentkowski practices general urology and is fellowship trained in minimally invasive and robotic surgery for prostate, bladder and kidney cancer.



Richard M. Levin, M.D., F.A.C.S., C.P.I.
Dr. Levin practices general urology and focuses on minimally invasive treatments for prostate cancer, stone disease, and minimally invasive treatment for BPH including Rezum® and Greenlight® laser therapy.



Diane Schmidt, CRNP
Diane is a certified family nurse practitioner who specializes in urology care, and sees patients for overactive bladder, incontinence, recurrent UTIs, Enlarged prostate/BPH and kidney stones.

**Chesapeake
UROLOGY®**

The most personal care for life's most personal issues.®

810 Bestgate Road, Suite 200 | Annapolis, MD 21401
443-231-1500 | www.ChesapeakeUrology.com

25 Medical Offices Throughout Maryland | 18 AAAHC-Certified Ambulatory Surgical Centers | Anne Arundel, Baltimore, Harford, Howard, Carroll, Montgomery, Prince George's, Wicomico, Worcester counties in Maryland, Baltimore City, and Sussex County, Delaware | 900+ Staff Including 85+ Urologists, Urologic Oncologists, Radiation Oncologists, Urologists and 33 Advanced Practice Providers

EXPERIENCE COUNTS!

**JEAN
ANDREWS**
Associate Broker,
CRS, GRI



**CHRISTINE
JOYCE**
CRS, GRI, ePro

THE JEAN ANDREWS & CHRISTINE JOYCE TEAM
of Long & Foster Real Estate

Selling the Severna Park Area for 30 Years!

443-871-5595



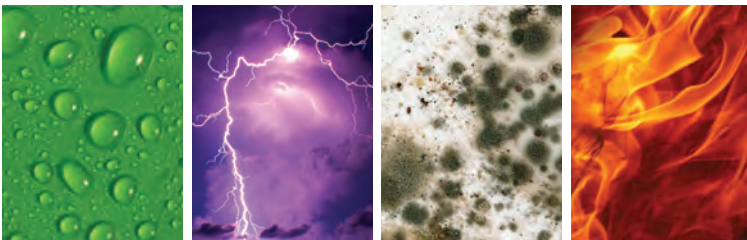
We know our community and our community knows us! Jean and Christine are local experts for Real Estate in the Chesapeake Bay Region. If you're thinking about buying or selling, go with the BEST, go with Jean and Christine!



Office: 410-544-4000

LongandFoster.com/JEANANDREWS

WATER STORM MOLD FIRE



24 HOUR EMERGENCY SERVICE



COMMERCIAL AND RESIDENTIAL



Fire & Water - Cleanup & Restoration™

**SERVPRO® of
Annapolis/Severna Park**

410-647-8181

servproannapolissevernapark.com

Independently Owned and Operated

Over 1,700 Franchises in North America

SERVPRO® Franchise System Serving
Since 1967



Like it never happened.®

Mention this
advertisement
and receive a

**\$10.00
GIFT CARD**

Gift card is awarded after service
has been provided. Offer expires
December 31, 2021.



**Driveways | Basements | Walkways
Retaining Walls | Patios | Porches**
Brush, Stamped or Stained

FREE ESTIMATES!

410-987-3580
www.worldwideconcreteinc.com

MD Lic 63813

Licensed & Insured, Backflow Certified

Quality Since 1957



**Residential • Commercial
Sales-Service-Installation-Repairs**

- Water Heaters
- Disposals
- Sump Pumps
- Backflow Services
- Sinks & Showers
- Frozen Lines
- Water Main Repairs
- Toilets
- Leaky Faucets & Pipes
- Clogged Drains & Sewer
- Low Water Pressure
- Big or Small Jobs

RUSSELL R. DWYER, INC.

Dwyer Plumbing & Heating
(410) 647-3030

www.dwyerplumbinginc.com

8377-B Jumpers Hole Road, Millersville, MD 21108



SEVERNA PARK
539 Ritchie Hwy
410-647-7977

PASADENA
3100 Mountain Rd
410-437-4404

GLEN BURNIE
7986 Crain Hwy
410-969-0701

ELDERSBURG
1320 Liberty Rd
Suite G

WESTMINSTER
94 Carroll St
410-848-4260

CAMBRIDGE
401 Sunburst Hwy
410-901-2418

ROCKVILLE
1460 Rockville Pike
240-801-3977



WWW.BAYAREATIREMD.COM | TEXT ANY OF OUR LOCATIONS

OUR VISION: Honesty, Integrity and Commitment to provide our valued customers with the best quality service while selling the #1 tire, Goodyear.



GSPC Has Spent 60 Years Advocating For Community Interests



The Greater Severna Park Council has had dedicated leadership throughout its history. In 2009, the council consisted of (front, l-r) President Maureen Carr York, Secretary Wes Adams, (back-l-r) Vice President of Public Affairs Al Johnston, Director John Norville, Vice President Jerry Pesterfield, Treasurer Steve Poland and Director Emeritus Dan Nataf.

Seeing the need for joint action on zoning, sewage, schools, roads and other community issues, the Severna Park Kiwanis Club pushed to start the Greater Severna Park Council (GSPC) in 1959.

Holding the first GSPC meeting at Wagon Wheels, where the Jones Station Rite Aid is now located, the group established a mission to advance community efforts in the area; promote organized planning for zoning, sewage disposal, water supply, public roads, police protection, and schools; support actions to abate nuisances; assist local authorities toward good government; and aid the organization of community associations.

Severna Park was largely an agricultural and residential community, so zoning was at the forefront of the organization's efforts.

"In 1959, our concern was

piecemeal rezoning," Al Johnston explained during a GSPC meeting in 2009. Johnston, GSPC's vice president of public affairs at the time, passed away in 2012.

The rezoning concern became greater in the mid 1960s when Johnston and the GSPC thwarted a 16,000-apartment high-rise from being built in what is now both Shipley Choice communities. During this time, the GSPC became increasingly involved in subdivision regulations, creating buffers between residential and commercial areas, and the 1968 General Development Plan. Severna Park fared well in the county's comprehensive rezoning in 1973 because of the GSPC's involvement.

GSPC past presidents include Eric Neseth, Pat Troy, John Strange and others. Under Neseth's leadership, the GSPC helped bring to fruition the Small

Area Plan and played a seminal role in bringing street lights into Severna Park communities.

During his tenure, the greatest challenge was to maintain the needs and interests of both residential and commercial entities.

Troy stepped in as president from 1990 to 1993, although she had been involved since the mid '70s as a delegate from Severna Forest and later as secretary. Her biggest achievement was the development of East West Boulevard.

"East West was such a divisive issue," Troy recalled.

At the time, Benfield Road was under consideration to become a four-lane road, but many residents in her neighborhood and others were concerned. As a result, a parallel road north of Benfield, which would still connect 97 and Route 2, was proposed. As GSPC president, Troy,

along with then County Executive Bob Neall, took a bus tour along the development route of East West and stopped to listen to the concerns of the many protestors who didn't want a highway in their backyards.

The "aha" moment hit her at 4:00am. In the dark, she grabbed a piece of cardboard and wrote – "Boulevard, both sides; one lane each side with median; shrubbery in between with bike path along the way to connect Veterans to Route 2" – and that is what we have today.

Since 2014, GSPC has been under the leadership of Maureen Carr York. All Severna Park residents are encouraged to attend meetings, which take place on the second Tuesday of each month at 7:30pm. Meetings are currently being held via Zoom until the Severna Park Library reopens for meetings. ■

Founding Families Helped Shape Severna Park

By Linda Zahn

When Severna Park celebrated its centennial in 2006, some of the area's founding families shared stories of how they shaped the community.

The Boro Family

William Boro's grandfather arrived in Severna Park (known in earlier times as Boone) in 1910. His grandfather, Wolf, and his wife, Fanny, came from Russia to live with their cousins (the Strauss family) and worked for the family business until they built and operated their own store at the corner of McKinsey Road and B&A Boulevard, which later came to be known as the "Taj Mahal."

"If alive today, my father Alex could have told many stories, and he did just that in the book 'Severna Park Reflections,'" William said. "I remember riding in his '57 Pontiac convertible on warm summer nights when he got a craving for crab cakes from Feezers. I remember that darkly lit, noisy bar with sawdust on the floor."

The Dill Family

Edward and Anna Dill and their three children moved from Baltimore to Cypress Creek Road in what was then known as Boone Station (now Severna Park) in 1915. Edward, a plumber who worked in Baltimore, took the train to town for work. In 1916, he opened his own company in Severna Park: E.O. Dill Plumbing and Heating.

His son, Erman "Mike" Dill Sr., worked with his father for many years. They worked on the private water systems owned by Oscar Hatton for the Severna Company and Norvell Chapman for the Round Bay system. The county took over the water systems in the early 1940s.

Anna enjoyed cooking and



Walter Winkelmeyer Sr. started the Severna Park Chamber of Commerce and was instrumental in starting the Severna Park Kiwanis Club. Jane Winkelmeyer was president of the Soroptimist Club of Anne Arundel, which distributed the oral Salk vaccine for polio.

put her culinary talents to use at church suppers at Woods Memorial Church.

Edward died in 1940 and Anna passed away in 1957. Mike and his wife, along with their nephew Harry Hardy, took over the business and ran it successfully for many years. Mike, a charter member of the Severna Park Rotary and Severna Park Elks, was also active with the Earleigh Heights Volunteer Fire Company, where he served as chief for 16 years.

The Giddings Family

Arthur and Lydia Giddings arrived in Severna Park in 1932. According to their daughter, Kathie Giddings Hankins, "Arthur Giddings was an extremely effective entrepreneur who did not seek the limelight. He worked hard on whatever he did, and his wife, Lydia, was always right there to support him."

The couple, who lived on Beach Road until they died, was instrumental in the development of Cape Arthur. "They were an active part of the community and loved every minute of being in such a wonderful area," Kathie said.

Kathie also revealed other stories. "It was said that Arthur Giddings would slip money to sick people during a handshake, and it is also believed Arthur and Lydia sent surprise coal deliveries to the needy," she said.

Marie Giddings Gary acknowledged that after Arthur and Lydia arrived in the U.S. from Wiltshire England, they began farming property near Gibson Island. Arthur sold produce around the county including along Old Annapolis Boulevard (now B&A Boulevard) in Severna Park. Seeing possibilities there, he purchased a plot of land from Henry Bourke and built a brownstone vegetable stand with a straw roof he thatched himself.

In May 1933, the family moved into the home next door to the stand and soon Giddings started a small grocery store with a Sunoco gas station that even contained an underground pit for changing oil! Giddings Grocery continued to expand, soon adding a meat department. The fruits of their labor were the result of working long, hard hours – usually sunrise to way past sunset.

Soon after the former Brockmeyer's store burned down in the early '40s, the Giddings family bought the property, as well as the land across the street on Riggs Avenue and Old Annapolis Boulevard. They then built and opened the first self-service grocery store in the community on the second parcel, which is now the Carr Building.

The Winkelmeyer Family

Walter Winkelmeyer Sr., who started the Chamber of Commerce in Severna Park, was instrumental in starting the Severna Park Kiwanis Club with the help of his brother-in-law, Irvin Klohr, president of the Glen Burnie Kiwanis Club (March of 1956). Walter also started the Severna Park Health Center.

Jane Winkelmeyer was president of the Soroptimist Club of Anne Arundel, which was able to distribute the oral Salk vaccine for polio and contributed financial support to the health center.

Before passing away in 2014, Mary Jane Winkelmeyer recalled several interesting stories and memories about the family business, Winkelmeyer Coal, Feed & Hardware, located on B&A Boulevard.

"On Easter, we sold baby rabbits, baby chicks, and ducks," she said. "The chicks were dyed with food coloring and, of course, all of them were roosters! Parents allowed their children to buy them, however, after Easter they grew up ... which started a parade of parents bringing the chicks back because of their crowing."

Another amusing story involves the time a lady came into the store, approached Wink, and stated she had tried everything to get rid of fleas on her dog to no avail. He responded, "Just a minute, this is the best and surest way," and handed her a hammer. ■

Gold Star Memorial Pays Tribute To Severna Park Soldiers



Along the B&A Trail, and across from Woods Memorial Presbyterian Church, sits a gazebo and memorial in honor of Eric Kavanaugh, William “Taylor” Wild IV, Eric Herzberg and Nathaniel McDavitt — four Severna Park heroes who made the ultimate sacrifice.

Their sacrifices, along with the completion of the gazebo, were recognized during a groundbreaking ceremony on September 11, 2020.

“This structure is important because it’s a visible, public manifestation of our commitment to never forget that sacrifice,” said retired colonel Mark Mitchell, former acting assistant defense secretary for special operations and low-intensity conflict for the U.S. Department of Defense. “And it represents the fulfillment of that very same promise to these Gold Star families who are here with us today. You, too, have sacrificed and we owe you our gratitude and honor also.”

A plaque for each of the four heroes surrounds the gazebo.

Private First Class Eric Kavanaugh died in September 2006 when an improvised explosive device detonated near his Humvee during combat operations in Iraq. The 20-year-old enjoyed fishing, swimming, boating and playing guitar.

Lance Corporal Eric Herzberg was also 20 when he died while conducting combat operations in Al Anbar Province, Iraq. A member of the Severn River Rugby Club, he was an avid video gamer and a fan of Irish and patriotic country music.

Lance Corporal William “Taylor” Wild IV was at Hawthorne Army Depot in Nevada, training for his third deployment, when he died in 2013. The 21-year-old was a former Severna Park High School base-

ball player and a “Harry Potter” fan.

Airman First Class Nathaniel McDavitt was in an Afghanistan building that collapsed in April 2016. The 22-year-old played football and basketball at SPHS, was an Eagle Scout, and was an active community volunteer who enjoyed fishing and hunting.

Tom Chisholm explained that the memorial idea was born from conversation between himself and friends Tom Lindsay and Kevin Kavanaugh, Eric’s father.

“We built this so it’s totally accessible to B&A Trail users,” Chisholm said. “We want people to come in, visit, reflect, and it’s a tribute to all soldiers even though we simply pointed out four.”

Kevin Kavanaugh said the committee looked at existing monuments at the Naval Academy in Annapolis and others, until the Anne Arundel County Department of Recreation and Parks graciously offered a gazebo that was “dilapidated, falling apart.”

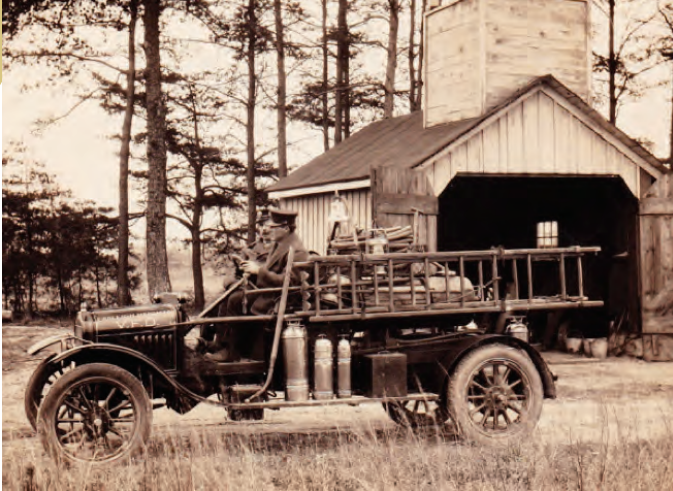
“We’re all members of the American Legion Post 175, and that facilitated our ability to fundraise,” he said. “Everybody chipped in and called friends, neighbors and businesses, and it took several thousand dollars to build this. This is not a homebuilt wood structure. This is all pre-engineered steel. We meant it to last forever and it will.”

The memorial honors service men and women who were active duty when they were killed in harm’s way during operations in either Afghanistan or Iraq.

“We can add,” Kevin Kavanaugh said, “but God forbid we have to.”

To donate or to learn more about the Gold Star memorial, visit www.heroesofsevernapark.com. ■

Over 100 Years Strong: The History Of Earleigh Heights Volunteer Fire Company



When the Earleigh Heights Volunteer Fire Company turned 100 years old in 2018, former volunteer fire chief and company president Joe Angyelo helped the Severna Park Voice piece together the department's history.

His research came in the form of newspaper articles, old photographs and talking to people whose ancestors were founding members of the fire department. The following history is what he found.

On April 18, 1918, the Earleigh Heights Volunteer Fire Company opened on Truck House Road in Severna Park.

Earleigh Heights' first fire engine was the American LaFrance, which it acquired in 1930. Before that, firetrucks were primarily carts used to haul the equipment from place to place. The American LaFrance carried 500 gallons of water. When parked at a fire, the truck could not be moved while the pump was engaged. Firefighters had to disengage the pump before moving the truck.

In 1939, Earleigh Heights got its first Diamond T, which could drive and pump at the same time. It also carried 500 gallons of water. The second Diamond T carried 800 gallons of water, which was useful when fighting fires in rural areas.

Originally, Earleigh Heights had someone called a "chauffeur," who was the first career firefighter and earned a salary of \$80 a month. This was the beginning of the system most fire stations use today in staffing both volunteer and career firefighters.

"The chauffeur was originally hired basically as a caretaker of the truck house and equipment," Angyelo said. "Additionally, it provided that someone would be on hand at all times to drive the fire engine."

As time went on, the chauffeur position was given the rank of lieutenant and was later renamed "engineman." Today, the position is known as the "pump operator" and is a promotional step for career firefighters.

There have been many changes in equipment as technology advanced. To control small fires, first responders originally used hand-drawn soda-acid fire extinguishers.

The body of the extinguisher contained sodium bicarbonate dissolved in water, and the top had a bottle of sulfuric acid. When the extinguisher was turned upside-down, the two mixed to release carbon dioxide under pressure, which forced the water out of the extinguisher through a hose. It had to remain upside-down while in use.

Another technological advancement was the two-way radio, which was installed in February 1951. The first call was the letters "KGB466."

Before the radio, if a fire were put out before firefighters arrived, someone at the station had to call a house or business on the fire truck's route to flag the truck down, Angyelo said.

Earleigh Heights was the first company in Anne Arundel County to have a two-way radio.

Angyelo said the public's perception of firefighters has not always been great.

"Years ago, there used to be a stigma that if you were a fireman, you didn't do things

between calls other than play cards and shoot pool," Angyelo said.

Now, with all of the schooling required to be in the fire service, Angyelo said, everyone is reading books and studying between calls.

"You go [to the firehouse] with the intention of doing something constructive," he said.

Key People and Advancements

Though each person made a unique contribution to the fire department, a notable fire chief was Erman O. "Mike" Dill, who served in that capacity from 1949 to 1964. During his 16 years as fire chief, Dill oversaw many advancements to the fire department.

Under his leadership, Earleigh Heights installed its first radio system, received the 1954 Ward LaFrance pumper, and helped with the planning and construction of the move from Truck House Road to the current building on Ritchie Highway.

Another key member of Earleigh Heights was Emory R. "Sarge" Kopf, who served for more than 20 years. Kopf had many notable contributions not only to Earleigh Heights but also to all other fire departments in the state.

In 1961, Kopf proposed an "annual tax of one-half cent on every \$100 assessed value of all real or personal property in Anne Arundel County," Angyelo said.

This tax was used to construct and maintain adequate training facilities and a central alarm system in the county. This led to the fire training academy and communication center, which

Continued on page 59



DIGGS LAW

THE LAW OFFICE OF DAVID V. DIGGS, LLC

We can conduct all business via phone, online and Zoom.



*Your lawyer and neighbor
for all your family law,
accident, personal injury
and estate planning needs*

*DiggsLaw gives you
personal connection and
professional expertise
you can count on.*

Call today for an appointment!

8684 Veterans Highway · Millersville, MD 21108

Email: info@diggslaw.com

O: 410-244-1189 F: 443-543-6360

Website: www.diggslaw.com

Frank & Bill's AUTO COLLISION CENTER

CAR ACCIDENT?

Turn to Frank & Bill's to
take care of your auto
repair needs!

410-255-DENT
[3368]



CONVENIENTLY
LOCATED AT:
3306 Mountain Rd
Pasadena, MD



Visit our website to see our work!

FrankandBills.com

We Are Seeing Patients During The COVID-19 Crisis!



budding voices

Speech – Language Therapy
for Children of All Ages

*Specializing in Autism, Apraxia
& Developmental Delay

Comprehensive
evaluation

Ongoing
therapy

Call Today for a FREE Consultation

844-410-2878

NOW OPEN

815 Ritchie Hwy., Suite 118
Severna Park, MD 21146
www.Buddingvoices.com



SEVERNA PARK VOICE

SERVING OUR COMMUNITY SINCE 1981

SEVERNA PARK, MD

MARCH 11, 2010

A1

Carr, York Announces

SEVERNA PARK VOICE

SERVING OUR COMMUNITY SINCE 1981

Got News? Send Us Your Tips!

When you have big
news to share,
send it to the *Voice*.

Call us at
410-647-9400

or

email our newsroom at

spvnews@severnaparkvoice.com

Health Of Magothy Declines

about 50 attendees. "But I

By John Singleton

On February 24, ASPIRE (Association for Severna Park Improvement, Renewal, and Enhancement) hosted the 2010 Annual Lead-

residents.

"I am so pleased that ASPIRE is partnering with local nonprofits to recognize the people in Severna Park who provide the leadership needed

of Farmers in Care. Between ASPIRE, the Greater Severna Park Chamber of Commerce, the Greater Severna Park Council and the many other community associations in our town, we are truly lucky."

P.O. Box 608, Severna Park, MD 21146
410-647-9400

spvnews@severnaparkvoice.com
www.severnaparkvoice.com

 facebook.com/severnaparkvoice
 @SPVoice

Artfarm Studios

Owners: Alison Harbaugh and Darin Gilliam
111 Chinquapin Round Road, Suite 200
Annapolis, MD 21401
443-360-5278
info@artfarmannapolis.com

Artworks Studio

*Owner/Instructor:
Julie Braithwait*
Located in Thrive Gym
1244 Ritchie Highway
Arnold, MD 21012
410-271-3343
artworks_studio@verizon.net

Chesapeake Arts Center

194 Hammonds Lane
Brooklyn Park, MD 21225
410-636-6597
www.chesapeakearts.org

**Children's Theatre
Of Annapolis**

Executive Director: April Forrer
1661 Bay Head Road
Annapolis, MD 21409
410-757-2281

Creative Force Dance Center

570-F Ritchie Highway
Severna Park, MD 21146
410-431-7018
www.creativeforcedance.com

**Dance Center
of Severna Park**

Dance Director: Kellie Greer
**Programs held at the Severna Park
Community Center**
623 Baltimore-Annapolis Boulevard
Severna Park, MD 21146
410-647-5843
kgreer@spcommunitycenter.org

Design in Motion

743 Route 3 North
Gambriells, MD 21054
410-923-9925
designinmotiondance.com

**Maryland Hall
for Creative Arts**

Executive Director: Emily Garvin
801 Chase Street
Annapolis, MD 21401
410-263-5544
info@marylandhall.org

**Maryland Performing
Arts Center**

Artistic Director: Kelsey King
844 Ritchie Highway, Suite 108
Severna Park, MD 21146
410-421-8960
colleen@maryland-performingartscenter.com

Music & Arts

Retail Manager: Andrew Greene
560-B Ritchie Highway
Severna Park, MD 21146
410-544-1010

School of Rock Annapolis

General Manager: Edward Beever
1460 Ritchie Highway, Suite 105-106
Arnold, MD 21012
410-349-1456
annapolis@schoolofrock.com

Spark Dance Studio

Director/Instructor: Amy Rink
P.O. Box 543
Severna Park, MD 21146
410-212-1429
sparkcenter@gmail.com

**Stage &
Screen Studios
LLC**

*Owner/Manager:
Julie Ann Garvey*
Director/Instructor: Pete Garvey
215 Najoles Road, Studio A
Millersville, MD 21108
443-589-4320
info@stagescreenstudios.com

**Stageworkz, Theatre
Arts Project**

Artistic Director: Vicki Smith
1035 Benfield Boulevard
Millersville, MD 21108
410-729-2802
stageworkz@aol.com

Theater in the Park LLC

*Directors: Jennifer Lee Kraus
and Kylie Airin Sjolie*
**Workshops held at the Severna Park
Community Center**
623 Baltimore-Annapolis Boulevard
Severna Park, MD 21146
410-212-1018
theaterinthepark.spcc@gmail.com

The Dance Academy

Director: Noelle Reese
479 Jumpers Hole Road, L6
Severna Park, MD 21146
410-544-3220

The Talent Machine Company Inc.

Directors: Lea Capps and Vicki Smith
P.O. Box 6418
Annapolis, MD 21401
www.talentmachine.com/contact-us

The History Of Earleigh Heights Volunteer Fire Company

Continued from page 56

are located on Veterans Highway in Millersville and still used to this day.

"Upon completion, the training academy provided training for career and volunteer personnel," Angyelof said. "Many basic and advanced training courses from the Maryland Fire Rescue Institute were conducted at this facility."

The central alarm and dispatch system was put in service in November 1966.

There were also technological advances in the ambulances and firetrucks. In 1945,

the American Legion Post in Glen Burnie helped Earleigh Heights purchase a 1945 Ford ambulance. Then, in 1948, Earleigh Heights purchased a Buick ambulance.

As previously mentioned, in 1954, Earleigh Heights received a new Ward LaFrance pumper. This was considered "state of the art" at the time, and a picture of it was sent to all members of the fire department on a Christmas card.

On January 29, 1956, the new Ward LaFrance was one of the engines to respond to

the fire at Arundel Park in Brooklyn. This fire killed 11 people, injured hundreds more and was the worst public assembly disaster in state history. Retired chief Joseph B. Ross Jr. wrote about the event in his book "Arundel Burning."

Today, Earleigh Heights is still prominent in the community.

"We play a very significant role in providing fire, rescue and emergency medical care services to the citizens of Anne Arundel County and, at times, beyond county lines," Angyelof said. ■

Arts, Entertainment & Travel

ANNAPOLIS BOWL

2057 Generals Highway, Annapolis, MD 21401
410-266-0700 www.gobowlingannapolis.com

BENFIELD GALLERY

485 Jumpers Hole Road, Severna Park, MD 21146
410-544-2299 www.benfieldgallery.com

CHESAPEAKE ARTS CENTER

194 Hammonds Lane, Brooklyn Park, MD 21225
410-636-6597 www.chesapeakearts.org

CREATIVE FORCE DANCE CENTER

570-F Ritchie Highway, Severna Park, MD 21146
410-431-7018 www.creativeforcedance.com

ECO ADVENTURES

216 Najoles Road, Suite 600, Millersville, MD 21108
410-987-1300 www.ecoadventures.com

HISTORIC HANCOCK'S RESOLUTION

2795 Bayside Beach Road, Pasadena, MD 21122
410-255-4048 www.historichancocksresolution.org

GREENWAY BOWL

8246 Telegraph Road, Odenton, MD 21113
410-551-7100 www.gobowlingodenton.com

LIVING WITH THE MAGIC VACATIONS

443-343-2523 www.livingwiththemagic.com

MCBRIDE GALLERY

215 Main Street, Annapolis, MD 21401
410-267-7077 www.mcbridegallery.com

PARTY UP MY YARD

410-793-739 www.partyupmyyard.com

PIC-N-PAINT POTTERY

3020 Mountain Road, Pasadena, MD 21122
410-439-3555 www.picnpaintpottery.com

RAMS HEAD

33 West Street, Annapolis, MD 21401
410-268-4545 www.ramsheadgroup.com

SEVERNA PARK LANES

840 Ritchie Highway, Severna Park, MD 21146
410-647-0811 www.gobowlingsevernapark.com

TOBY'S DINNER THEATRE OF COLUMBIA

5900 Symphony Woods Road, Columbia, MD 21044
1-800-88-TOBYS www.tobysdinnertheatre.com

SHOP LOCAL

Auto, Marine & Transportation

BAY AREA TIRE & SERVICE CENTER

539 Ritchie Highway, Severna Park, MD 21146
410-647-7977 www.bayareatiremd.com

CYPRESS MARINE

730 Cypress Road, Severna Park, MD 21146
410-647-7940 www.cypressmarine.net

FRANK & BILL'S AUTO COLLISION

3306 Mountain Road, Pasadena, MD 21122
410-255-3368 www.frankandbills.com

THE GREAT AMERICAN CAR WASH

825 Ritchie Highway, Severna Park, MD 21146
410-544-9009 www.thegreatamericancarwash.com

JIM'S BODY SHOP

247 Keedys Lane, Pasadena, MD 21122
410-647-1178 www.jimsbodyshopinc.net

MAGOTHY MOTORCARS INC.

4433 Mountain Road, Suite 1, Pasadena, MD 21122
410-437-8700 www.magothymotorcars.com

MARYLAND YACHT CLUB

1500 Fairview Beach Road, Pasadena, MD 21122
410-255-4444 www.mdyc.org

MIDAS — PASADENA

8158 Ritchie Highway, Pasadena, MD 21122
443-770-2358 www.midas.com

MIGHTY SPRAY CAR WASH

2 Robinson Road, Severna Park, MD 21146
410-544-6868

PETE'S CYCLE CO

800 Ritchie Highway, Severna Park, MD 21146
410-647-5880 www.petescyclesevernapark.com

PODICKORY POINT YACHT & BEACH CLUB

2116 Bay Front Terrace, Annapolis, MD 21409
410-757-8000 www.podickorypoint.com

SEVERNA PARK AUTOMOTIVE

499 Ritchie Highway, Severna Park, MD 21146
410-647-8322 www.severnaparkautomotive.com

SMITH'S MARINA ON THE SEVERN

529 Ridgely Road, Crownsville, MD 21032
410-923-3444 www.smithsmarina.com

ZBEST EXECUTIVE

6809 Ritchie Highway, Glen Burnie, MD 21061
410-768-1148 www.zbestexecutive.com

Banking & Financial Services

2250 FINANCIAL SERVICES INC.

251 Najoles Road, Suite G, Millersville, MD 22108
410-774-6723 www.2250financial.com

ARUNDEL FEDERAL

50 W. McKinsey Road, Severna Park, MD 21146
410-544-9600 www.arundelfederal.com

THE BANK OF GLEN BURNIE

534 Ritchie Highway, Severna Park, MD 21146
410-544-0270 www.bofgb.com

CASSILLY FINANCIAL

572 Baltimore-Annapolis Blvd., Severna Park, MD 21146
410-793-5210 www.cassillyfinancial.com

DELMARVA FINANCIAL GROUP

1298 Bay Dale Drive, Suite 201, Arnold, MD 21012
410-216-2103 www.delmarvafinancialgroup.com

EDWARD JONES — BRIAN CONRAD

479 Jumpers Hole Road, Suite 202, Severna Park, MD 21146
410-544-8970 www.edwardjones.com/brian-conrad

EMBRACE HOME LOANS

1907 West Street, Suite 102, Annapolis, MD 21401
443-321-4500 www.embracehome loans.com

EMERALD FINANCIAL PARTNERS

1511 Ritchie Highway, Suite 304, Arnold, MD 21012
410-224-2600 www.emeraldfinancialpartners.com

FIRST HOME MORTGAGE

231 Najoles Road, Suite 235, Millersville, MD 21108
410-544-5656 www.firsthome.com

GARDINER & APPEL

570 Baltimore-Annapolis Blvd., Severna Park, MD 21146
410-647-7777 www.gardinerappelgroup.com

NELSON & PELURA

251 Najoles Road, Suite G, Millersville, MD 21108
410-975-5565 www.npcpa.net

PNC BANK

596 Ritchie Highway, Severna Park, MD 21146
410-647-2120 www.pnc.com

PREMIER PLANNING GROUP

115 West Street, Suite 400, Annapolis, MD 21401
443-837-2520 www.jasonlabarge.com

PRIMARY RESIDENTIAL MORTGAGE, INC.

489 Ritchie Highway, Suite 202, Severna Park, MD 21146
410-777-8393 www.primaryresidentialmortgage.com



Investing is about more than money.

At Edward Jones, we stop to ask you the question: *What's important to you?* Without that insight and a real understanding of your goals, investing holds little meaning.

Contact your Edward Jones financial advisor for a one-on-one appointment to discuss what's really important: *your goals.*

Brian M Conrad, CFP®

Financial Advisor

479 Jumpers Hole Rd Suite 202
Severna Park, MD 21146
410-544-8970

www.edwardjones.com
Member SIPC

Edward Jones®
MAKING SENSE OF INVESTING

Bank Smart. Bank Local.



For more than 70 years, The Bank of Glen Burnie® has helped residents of Anne Arundel County turn dreams into reality. We've built lasting relationships based on trust, stability and community involvement. Locally owned and operated, we have a personal stake in the communities we serve.

Whether opening a checking or savings account, buying a new car or home, or even starting your own local business, we offer a full range of banking products designed to meet your unique financial needs.

We offer big bank options, with local, personalized customer service. Stop by your local branch today to see for yourself what community banking means.



All loans subject to credit approval. Consult a loan officer for complete details. All interest rates, terms and fees subject to change at any time.



BofGB.com | 410-766-3300

Glen Burnie | Crownsville | Linthicum | New Cut | Odenton | Riviera Beach | Severn | Severna Park

SEVERN BANK

598 Benfield Road, Severna Park, MD 21146
410-544-0800 www.severnbank.com

SYNERGY DIVORCE SOLUTIONS

1997 Annapolis Exchange, Suite 300, Annapolis, MD 21401
410-698-1222 www.synergydivorcesolutions.com

WTS FINANCIAL

2441 Mountain Road, Suite F, Pasadena, MD 21122
443-702-7128 www.wtsfinancial.com

Beauty & Fitness

CHRISTINA JOSEPHS SALON STUDIO

8268 Veterans Highway, Millersville, MD 21108
410-987-7700 www.christinajosephsalon.com

EMIDIO VINCENZO ESCAPE SALON & SPA

836 Ritchie Highway, Suite 15, Severna Park, MD 21146
410-647-6421 www.evescape.com

FABU SALON AND SPA

543 Baltimore-Annapolis Blvd., Severna Park, MD 21146
410-544-1277 www.fabusalononline.com

FACE IT! SPA AND WELLNESS

790 Ritchie Highway, Suite E34, Severna Park, MD 21146
410-777-9376 www.faceitspaandwellness.com

IMAGE CREATORS SALON AND SPA

568-F Ritchie Highway, Severna Park, MD 21146
410-544-8852 www.imagecreatorssalonandspa.com

PARK FITNESS

564 Ritchie Highway, Severna Park, MD 21146
410-432-2113 www.parkfitssp.com

THE PARK SALON AND BARBER

542 Baltimore-Annapolis Blvd., Severna Park, MD 21146
410-544-5800 www.theparksb.com

ROCKWELL FITNESS

551-E Baltimore-Annapolis Blvd., Severna Park, MD 21146
410-432-6140 www.rwfitness.com

Community & Non-Profit

GREATER SEVERNA PARK AND ARNOLD CHAMBER OF COMMERCE

1 Holly Avenue, Severna Park, MD 21146
410-647-3900 www.gspacc.com

SPAN, Inc.

400 Benfield Road, Severna Park, MD 21146
410-647-0889 www.spanhelps.org

SEVERNA PARK COMMUNITY CENTER

623 Baltimore-Annapolis BLVD., Severna Park, MD 21146
410-647-5843 www.spcommunitycenter.org

TRINITY BIBLE CHURCH

99 Truck House Road, Severna Park, MD 21146
410-647-4561 www.trinitysevernapark.org

Computers & Technology

ABLESPARK

820 W. Central Avenue #276, Davidsonville, MD 21035
443-302-4008 www.ablespark.com

Education & Training

ANNAPOLIS SAILING SCHOOL

7001 Bembe Beach Road, Annapolis MD 21403
410-267-7205 www.annapolissailing.com

ANNAPOLIS SCHOOL OF SEAMANSHIP

601 6th Street, Annapolis, MD 21403
410-263-8848 www.seamanshipschool.com

BAY AREA CPR, LLC

410-292-9215 www.bayareacprllc.com

BUDDING VOICES

815 Ritchie Highway #118, Severna Park, MD 21146
844-410-2878 www.buddingvoices.com

CELEBREE LEARNING CENTER OF PASADENA

8105 Catherine Avenue, Pasadena, MD 21122
410-439-0989 www.celebree.com

EDINBORO EARLY SCHOOL

380 Jumpers Hole Road, Severna Park, MD 21146
410-544-2476 www.edinboroearlyschool.org

EDUCATION TEAM ALLIES

410-793-7060 www.educationteamallies.com

GRANNIE ANNIE'S CHILD CARE CENTER, INC.

2 Carvel Court, Pasadena, MD 21122
410-255-0478 www.granniecure.com

GREG'S DRIVING SCHOOL

500 Ritchie Highway, Suite D, Severna Park, MD 21146
800-446-9230 www.gregsdrivingschool.net

MATHNASIUM OF SEVERNA PARK

558 Ritchie Highway #D, Severna Park, MD 21146
410-544-6284 www.mathnasium.com/severnapark

MONSIGNOR SLADE CATHOLIC SCHOOL

120 Dorsey Road, Glen Burnie, MD 21061
410-766-7130 www.msladeschool.com

ROLLY POLLIES

476-D Ritchie Highway, Severna Park, MD 21146
410-544-9002 www.rollypolliesmaryland.com

SEVERNA PARK U.M.C. NURSERY SCHOOL

731 Benfield Road, Severna Park, MD 21146
410-987-8339 www.severnaparkumc.org/nursery-school/

ST. JOHN THE EVANGELIST SCHOOL

689 Ritchie Highway, Severna Park, MD 21146
410-647-2283 www.stjohnspschool.org

ST. MARTIN'S IN-THE-FIELD EPISCOPAL SCHOOL

375-A Benfield Road, Severna Park, MD 21146
410-647-7055 www.stmartinsmd.org

TUTOR PARTNERS

800-781-2725 www.mytutorpartners.com

Government & Public Sector

CITIZENS FOR HEATHER BAGNALL

P.O. Box 129, Arnold, MD 21012
www.heatherbagnall.com

Health & Wellness

4 OAKS PHYSICAL THERAPY

354 Mountain Road, Suite E, Pasadena, MD 21122
410-360-1300 www.4oakspt.com

ADORO MED SPA AT THE CENTER FOR EYE & LASER

692 A Ritchie Highway, Suite 2B, Severna Park, MD 21146
410-647-0123 www.myeyelids.com

ANNAPOLIS FAMILY PHYSICAL THERAPY

156 Ritchie Highway, Suite 100, Severna Park, MD 21146
410-544-2422 www.annapolispst.com

ANNE ARUNDEL MEDICAL CENTER

2001 Medical Parkway, Annapolis, MD 21403
443-481-1000 www.aahs.org

BAYCOVE FAMILY & COSMETIC DENTISTRY

780 Ritchie Hwy, Suite S-30, Severna Park, MD 21146
410-384-9030 www.baycovedental.com

BAY RADIOLOGY BREAST IMAGING CENTER

537 Baltimore-Annapolis Blvd., Suite B, Severna Park, MD 21146
410-544-3331 www.bay-radiology.com

BAKER SISTERS FAMILY DENTAL CARE

8025 Ritchie Highway, Suite 205, Pasadena, MD 21122
410-768-7740 www.bakersisters.com

ALAN BINSTOCK, DDS

571 Baltimore-Annapolis Blvd., Severna Park, MD 21146
410-647-6611 www.drbinstock.com

BLUE SKY WELLNESS

8268 Veterans Highway #3, Millersville, MD 21108
410-775-5335 www.blueskywellnesspt.com

BRIGHTVIEW SENIOR LIVING SEVERNA PARK

469 Jumpers Hole Road, Severna Park, MD 21146
410-220-6858 www.brightviewseniorliving.com

BROADNECK PHARMACY

269 Peninsula Farm Road, Arnold, MD 21012
410-544-3733 www.broadneckrx.net

CHESAPEAKE BAY AQUATIC & PHYSICAL THERAPY

545 Baltimore-Annapolis Blvd., Severna Park, MD 21146
410-315-9080 www.cbayaquapt.com

CHESAPEAKE UROLOGY

810 Bestgate Road, Suite 235, Annapolis, MD 21401
443-231-1500 www.chesapeakeurology.com

CRANSKA, DR. JEFFREY

877 Ritchie Highway, Suite 305, Severna Park, MD 21146
410-975-9331 www.cranska.com

DEBBIE'S "NRG" BALANCING

410-868-7407 www.debbiesnrg.com

GENESIS HEALTHCARE

310 Genesis Way, Severna Park, MD 21146
410-544-4220 www.genesisihcc.com/severnapark

GREEN POINT WELLNESS

823A Elkridge Landing Road, Linthicum Heights, MD 21090
410-553-7171 www.gpwellness.com

GRISWOLD HOME CARE

410-846-0549 www.griswoldhomecare.com

HEARING SOLUTIONS AUDIOLOGY CENTER

479 Jumpers Hole Road, Suite 203A, Severna Park, MD 21146
410-672-1244 www.hearsolutions.com

HEARTLANDS

715 Benfield Road, Severna Park, MD 21146
410-729-1600 www.heartlandsassistedliving.com

HOSPICE OF THE CHESAPEAKE

90 Ritchie Highway, Pasadena, MD 21122
410-987-2003 www.hospicechesapeake.org

KINSEY, PAUL J. DDS, PA

515 Benfield Boulevard, #202, Severna Park, MD 21146
410-544-4012 www.drpaulkinsey.com

LASER CENTER OF MARYLAND

484-A Ritchie Highway, Severna Park, MD 21146
410-544-2600 www.lasercentermd.com

LEAN ON DEE

800-413-8733 410-449-4538 www.leanondee.com

MARYLAND PRIMARY CARE PHYSICIANS

1509 Ritchie Highway, Arnold, MD 21012
410-757-7600 www.mpcp.com

NEW LIFE ADDICTION COUNSELING & MENTAL HEALTH SERVICES

4231 Postal Court, Pasadena, MD 21122
888-526-0945 www.newlifeacs.com

PARK FITNESS

564 Ritchie Highway, Severna Park, MD 21146
410-432-2113 www.parkfitsp.com

PARK PHARMACY

580-N Ritchie Highway, Severna Park, MD 21146
410-544-7275 www.severnaparkpharmacy.com

RUTZEN EYE SPECIALISTS AND LASER CENTER

489 Ritchie Highway, Suite 200, Severna Park, MD 21146
410-975-0090 www.rutzeneye.com

SPRING ARBOR OF SEVERNA PARK

838 Ritchie Highway, Suite 3, Severna Park, MD 21146
410-544-7774 www.springarborliving.com

A rechargeable hearing device for
morning news to late night tv



Introducing Oticon Opn S™.

A clear breakthrough for **more natural hearing.**

Imagine being able to experience the many, wonderful sounds in your environment in a more natural, comfortable way with one super-fast charge. Thanks to the next-generation microchip technology in the Oticon Opn S, sounds and conversations will feel more balanced and natural all around you – not just the ones directly in front of you.

Plus
**Freedom from
disposable batteries**

with state-of-the-art lithium-ion
battery technology*.



Try Oticon Opn S Risk-Free!



Dr. Robinson



Dr. Kostkowski



Dr. Lilly

Hearing Solutions
410-672-1244

479 Jumpers Hole Road, Suite 203A | Severna Park
www.hearsolutions.com

Call to schedule your Personal Listening Demonstration with our Doctors Of Audiology

SUNRISE SENIOR LIVING OF SEVERNA PARK

43 W. McKinsey Road, Severna Park, MD 21146
410-376-7836 www.sunriseseniorliving.com

THINKING TREE PSYCHOLOGY

877 Baltimore-Annapolis Blvd., Suite 313, Severna Park, MD 21146
443-906-1132 www.thinkingtreepsychology.com

UM BALTIMORE WASHINGTON MEDICAL CENTER

301 Hospital Drive, Glen Burnie, MD 21601
410-787-4000 www.umms.org/bwmc

WAYPOINT WELLNESS CENTER

877 Baltimore-Annapolis Blvd., Suite 202, Severna Park, MD 21146
410-847-7436 www.waypointwellnesscenter.com

WRIGHT ORTHODONTICS

479 Jumpers Hole Road, Suite 203, Severna Park, MD 21146
410-544-0072 www.orthowright.com

VALLE, DR. BRIAN, DDS

251-J Najoles Road, Millersville, MD 21108
410-987-9100 www.drbrianvalle.com

YALICH CLINIC OF GLEN BURNIE

331 Oak Manor Drive, Suite 101, Glen Burnie, MD 21601
410-766-4878 www.yalich.com

Home & Garden

50 EAST REMODELING

410-500-2266 www.50eastremodeling.com

A-1 YARD SERVICE

443-871-1088

ALBRECHT PROPERTIES & HOME IMPROVEMENTS

1215 Oak Harbour Court, Pasadena, MD 21122
410-360-7703 www.albrechthomeimprovements.com

ALPHA PLUMBING

8813 Fort Smallwood Road, Pasadena, MD 21122
410-255-5998 www.alphaplumbing.biz

THE ANNE ARUNDEL HOME SERVICES COMPANY

8371 Baltimore-Annapolis Blvd., Pasadena, MD 21122
410-589-2819 www.annearundelhomeimprovementcompany.com

ARMIN'S GARAGE DOORS

604 Chester River Beach Road, Grasonville, MD 21638
410-729-0084 www.arminsgaragedoors.com

ATLAS MARBLE AND TILE

1244 Ritchie Highway, Suite 1, Arnold, MD 21012
410-315-8720 www.atlastile.com

BARSTOW & SONS HEATING & COOLING

1825 George Avenue, Suite 6, Annapolis, MD 21401
410-544-2606 www.barstowhvac.com

BAY COUNTRY PAINTER

236 Ritchie Highway, Severna Park, MD 21146
410-544-4400 www.baycountrypainters.com

BEAR LANDSCAPING INC.

8116 Veterans Highway, Millersville, MD 21108
410-969-0669 www.bearlandscaping.com

BILLY'S HEARTH, GRILL & MORE

407 Ritchie Highway, Severna Park, MD 21146
410-315-9090 www.billyshearthfireplaces.com

THE CARPET & AIR DUCT MAN

7108 Fort Smallwood Road, Curtis Bay 21226
443-452-6003 www.thecarpetandairductman.com

CATALINA POOL BUILDERS

836 Ritchie Highway, Suite 8, Severna Park, MD 21146
410-647-7665 www.catalinapoolbuilders.com

CHESAPEAKE PLUMBING

8259 Baltimore-Annapolis Blvd., Pasadena, MD 21122
410-437-3888 www.chesapeakeplumbing.com

CLEAN SWEEP OF ANNE ARUNDEL COUNTY

410-590-4800 www.cleansweepaa.com

CORNETT HEATING & COOLING

674 Ritchie Highway, Severna Park, MD 21146
410-647-6979 www.cornethvac.com

CUNNINGHAM CONTRACTING

1541 Defense Highway, Gambrills, MD 21054
410-721-8757 www.cunninghamcontractinginc.com

DESIGN TOPS

435 E. Stiemly Avenue, Glen Burnie, MD 21060
410-761-6336 www.designtopslc.com

DOVE REMODELING

8611 Fort Smallwood Road # C, Pasadena, MD 21122
410-439-5700 www.doveremodelingservices.com

DWYER PLUMBING & HEATING, INC.

8377 B Jumpers Hole Road, Millersville, MD 21108
410-647-3030 www.dwyerplumbinginc.com

ELEMENTS OF THE HOME

844 Ritchie Highway, #104, Severna Park, MD 21146
410-844-5800 www.elementsofthehome.com

FAMILY FLOORS

410-647-1115 www.familyfloors.com

FENCE & DECK CONNECTION

8057 Veterans Highway, Millersville, MD 21108
410-757-5511 www.fenceanddeckconnection.com

GARY'S GARDENS

651 Ritchie Highway, Severna Park, MD 21146
410-544-8787

GROVE HEATING AND COOLING

2142 Priest Bridge Court #6, Crofton, MD 21114
410-721-5595 www.grovehvac.com

HAAS AND SONS ELECTRIC

7790 Central Avenue, Pasadena, MD 21122
443-396-2555 www.haasandsons.com

HAGUE QUALITY WATER OF MARYLAND

814 E. College Parkway, Annapolis, MD 21409
410-757-2992 www.haguewaterofmd.com

HIMMEL'S LANDSCAPE & GARDEN CENTER

4374 Mountain Road, Pasadena, MD 21122
410-255-7730 www.himmelsgardencenter.com

HOMESTEAD GARDENS

522 Ritchie Highway, Severna Park, MD 21146
410-384-7966 www.homesteadgardens.com

HOMESTEAD GARDENS LANDSCAPE DIVISION

743 W. Central Avenue, Davidsonville, MD 21035
410-867-6336 www.landscape.homesteadgardens.com

J. M. MULLEN ELECTRICAL SERVICES

1825 Generals Highway, Annapolis, MD 21401
410-266-6316 www.jmmullenelectric.com

JOHNSON LUMBER COMPANY

8200 Veterans Highway, Millersville, MD 21108
410-987-5200 www.johnsonlumber.biz

KITCHEN ENCOUNTERS

202 Legion Avenue, P.O. Box 6485, Annapolis, MD 21401
410-263-4900 www.kitchenencounters.biz

KWIK DRY OF ANNE ARUNDEL COUNTY

410-200-9106 www.aacokwikco.com

LANDMARK ROOFING

540 Baltimore-Annapolis Blvd., Suite 3, Severna Park, MD 21146
443-223-7453 www.remodelwithlandmark.com

LKC CONSTRUCTION CORPORATION

8373 Piney Orchard Parkway, Suite 200, Odenton, MD 21113
410-672-6618 www.lkconstruction.com

MAIDHEALTHY

2567 Housley Road, Annapolis, MD 21401
410-897-0040 www.maidhealthy.biz

MALIBU WINDOW CLEANING

410-263-1910 www.annapoliswindowcleaning.com

MID-ATLANTIC DECK & FENCE Co.

800 Route 3 South, Gambrills, MD 21054
410-544-1987 www.midatlanticdeckandfence.com

MOLLY MAID OF CENTRAL ANNE ARUNDEL COUNTY

1517 Ritchie Highway, Suite 102, Arnold, MD 21012
410-349-8080 www.mollymaid.com

MOSQUITO SQUAD

877-667-0823 www.mosquitosquad.com

NICK RIVERS ROOFING & GUTTERS

Pasadena, MD 21122
443-336-7278 www.nickrivers.com

OLD LINE CHIMNEY SWEEPS

P0 Box 933, Pasadena, MD 21122
410-360-3311 www.oldlinechimney.com

ON THE GREEN, INC.

P0 Box 993, Gambrills, MD 21054
410-695-0444 www.onthegreeninc.com

RAYMOND C. MAULE AND SONS - CUSTOM HOME ELEVATORS

965 Baltimore-Annapolis Blvd., Severna Park, MD 21146
410-975-7088 www.rcmelevators.com

SERVPRO OF ANNAPOLIS SEVERNA PARK

1446 Ritchie Highway, Arnold, MD 21012
410-647-8181 www.servproannapolissevernapark.com

SEVERNA PARK KITCHEN & BATH

580 Suite C Ritchie Highway, Severna Park, MD 21146
443-784-1325 www.spkitchenandbath.com

TURF & LANDSCAPE MANAGEMENT

8245 Baltimore-Annapolis Blvd., Pasadena, MD 21122
410-881-6256 www.turfandlandscapemanagement.com

VERTEX CARPENTRY

830 Creek View Road, Severna Park 21146
443-926-6657 www.vertexcarpentry.com

W.J. HEGARTY HOME IMPROVEMENTS

1509 Defense Highway, Gambrills, MD 21054
410-721-0633 www.wjhegartyhomeimprovements.com

W.R. FLATER GENERAL CONTRACTOR

Severna Park, MD 21146
410-544-9117 www.wrflater.com

WORLDWIDE CONCRETE INC.

8259 Baltimore-Annapolis Blvd., Pasadena, MD 21122
410-987-3580 www.marylandconcretepro.com

ZESKIND'S HARDWARE & MILLWORK

1450 Ritchie Highway, Suite #101, Arnold, MD 21012
443-775-5446 www.zeskinds.com

Insurance Services

MORAN INSURANCE

696 Ritchie Highway, Severna Park, MD 21146
410-544-3422 www.moraninsurance.com

THE MWE PARTNERSHIP

1344 Ashton Rd, Suite 200, Hanover, MD 21076
410-793-4237 www.mwepartnership.com

STATE FARM - LEE TALBOT INSURANCE AGENCY INC.

170 Ritchie Highway, Severna Park, MD 21146
410-647-5900 www.leetalbotinsurance.com

Legal Services

DIGGS LAW

8684 Veterans Highway, Millersville, MD 21108
410-244-1189 www.diggslaw.com

ELMORE & THROOP, P.C.

5 Riggs Avenue, Severna Park, MD 21146
410-544-6644 www.elmore-throop.com

ELVILLE AND ASSOCIATES

450 Riva Road, Annapolis, MD 21401
443-393-7696 www.elvilleassociates.com

FELLNER LEGAL SERVICES

485 Ritchie Highway, #203-D, Severna Park, MD 21146
443-906-0117 www.flslawyer.com

FRAME & FRAME ATTORNEYS AT LAW

8562 Fort Smallwood Road, Pasadena, MD 21122
410-255-0373 www.frameandframelaw.com

KMA LAW OFFICE

540 Ritchie Highway, Suite 201, Severna Park, MD 21146
800-851-3301 www.kma-law.com

LAW OFFICE OF MICHAEL L. WILSMAN

565 Baltimore-Annapolis Blvd., Severna Park, MD 21146
410-975-9520 www.wilsmanlaw.com

LAW OFFICE OF STEVEN M. BERGER, LLC

821 W. Benfield Road, Suite I, Severna Park, MD 21146
410-777-5916 www.bergerwills.com

MURNANE & O'NEILL ATTORNEYS AT LAW

7425 Baltimore-Annapolis Blvd., Glen Burnie, MD 21061
410-761-6800 www.murnaneandoneill.com

WARFIELD AND DARRAH, P.C.

838 Ritchie Highway, Suite 2, Severna Park, MD 21146
410-544-1020 www.darrafamilylaw.com

Pet Care

ALLY 4 PETS, LLC

443-343-0137 www.ally4pets.com

FIELDSTONE ANIMAL INN

174 Obrecht Road, Millersville, MD 21108
410-647-6516 www.fieldstoneanimalinn.com

HIGGINS AND FRIENDS PET SITTING

443-994-7795 www.higginsandfriends.com

MILLERSVILLE ANIMAL HOSPITAL

401 Headquarters Drive #206, Millersville, MD 21108
410-987-8300 www.millersvilleanimalhospital.com

VCA CALVERT VETERINARY CENTER

4100 Mountain Road, Pasadena, MD 21122
410-360-7297 www.calvertvet.com

Real Estate

THE DAVID ORSO TEAM OF COMPASS REAL ESTATE

8 Evergreen Road, Severna Park, MD 21146
443-372-7171 www.davidorso.com

FRANK TAGLIANTI OF BERKSHIRE HATHAWAY PENFED REALTORS®

565 Benfield Road, Suite 100, Severna Park, MD 21146
410-384-9878 - Direct www.franktaglianti.com

THE JEAN ANDREWS AND CHRISTINE JOYCE TEAM AT LONG AND FOSTER REAL ESTATE

541-B Baltimore-Annapolis Blvd., Severna Park, MD 21146
410-975-3286 www.longandfoster.com/jeanandrews

THE MATT WYBLE TEAM OF CENTURY 21 NEW MILLENNIUM

8530 Veterans Highway, Suite 300, Millersville, MD 21108
833-698-3261 www.themattwybleteam.com

MELISSA BLOHM OF LONG & FOSTER REAL ESTATE

145 Main Street, Annapolis, MD 21401
410-991-5967 www.homesbymelissablohm.com

REMAX EXPERIENCE

3820 Mountain Road, Suite H, Pasadena, MD 21122
410-255-0000 www.mrpasadena.us

STEVEN MURPHY OF BERKSHIRE HATHAWAY PENFED REALTORS®

565 Benfield Road #100, Severna Park, MD 21146
410-404-4393 www.stevenmurphyrealestate.com

Recreation & Sports

ATHLETIC PERFORMANCE, INC.

740 MD Route 3 South, Gambrills, MD 21054
410-923-2100 www.athleticperformanceinc.com

BENFIELD SPORTSCENTER

1031 Benfield Boulevard, Millersville, MD 21108
410-987-5100 www.benfieldsc.com

BAY HILLS GOLF CLUB

545 Bay Hills Drive, Arnold, MD 21012
410-974-0669 www.bayhillsgc.com

DENISON CABRAL FUTSAL ACADEMY

1031 Benfield Boulevard, Millersville, MD 21108
443-306-4193 www.denisonfutsal.com

COMPASS POINTE GOLF COURSES

9010 Fort Smallwood Road, Pasadena, Maryland 21122
410.255.7764 www.compasspointegolf.com

DOCKSIDERS GYMNASTICS

216 Najoles Road, Millersville, MD 21108
410-987-8780 www.docksidersgymnastics.com

JING YING INSTITUTE OF KUNG FU & TAI CHI

1195 Baltimore-Annapolis Blvd., #6, Arnold, MD 21012
410-431-5200 www.jingying.org

KICK CONNECTION

8120 Ritchie Highway, Pasadena, MD 21122
410-544-2828 www.kickconnection.com

KOGEN DOJO

549 Baltimore-Annapolis Blvd., Severna Park, MD 21146
410-507-8160 www.kogendojo.com

Restaurants, Food & Beverage

A-1 PIZZA & SUBS

695 Old Mill Road, Millersville, MD 21108
410-729-0900 www.a1pizzamillersville.com

ADAM'S TAPHOUSE AND GRILLE

589 Baltimore-Annapolis Blvd., Severna Park, MD 21146
410-647-5757 www.adamsgrillesevernapark.com

ADAMM'S DELI AND CRAB CAKE DELIVERY

891 Elkridge Landing Road, Suite 180, Linthicum, MD 21090
410-850-4333 www.adammsdeli.com

ANNE ARUNDEL SEAFOOD

230 Mountain Road, Pasadena, MD 21122
410-255-3344

ANGEL'S FOOD MARKET

4681 Mountain Road, Pasadena, MD 21122
410-255-6800 www.angelsfoodmarket.com

ANNAPOLIS HOME BREW

836 Ritchie Highway, Suite 19/20, Severna Park, MD 21146
410-975-0930 www.annapolishomebrew.com

APRIL'S TABLE

544 Baltimore-Annapolis Blvd., Severna Park, MD 21146
410-544-2660 www.aprilstable.com

BASKIN ROBBINS - MILLERSVILLE

8564 Veterans Highway, Millersville, MD 21108
410-729-4130 www.order.baskinrobbins.com

BASKIN ROBBINS - SEVERNA PARK

604 Ritchie Highway, Severna Park, MD 21146
410-315-9196 www.order.baskinrobbins.com

BE MY GUEST CATERING

8258 Veterans Highway, Millersville, MD 21108
410-987-5262 www.bmgcatering.com

BEIJING CHINESE RESTAURANT

574 B Ritchie Highway, Severna Park, MD 21146
410-544-5550 www.beijingchinesemd.com

BELLA ITALIA RESTAURANT

1460 Ritchie Highway, Arnold, MD 21012
410-757-3373 www.bellaitaliaarnold.com

BELLA NAPOLI ITALIAN RESTAURANT

350 Mountain Road, Pasadena, MD 21122
410-255-9400 www.bellanapoli.us

BELLA'S LIQUORS

1376 Cape St. Claire Road, Annapolis, MD 21409
410-757-0019 www.bellasliquors.com

THE BIG BEAN

558 Baltimore-Annapolis Blvd., Severna Park, MD 21146
410-384-7744 www.thebigbean.com

THE BLACKWALL BARN & LODGE

329 Gambrills Road, Gambrills, MD 21054
410-317-2276 www.barnandlodge.com

THE BREAKFAST SHOPPE

552 Richie Highway, Severna Park, MD 21146
410-544-8599 www.thebreakfastshoppe.com

BRIAN BORU IRISH RESTAURANT AND PUB

489 Ritchie Highway, 103, Severna Park, MD 21146
410-975-2678 www.brianborupub.com

BROADNECK GRILL & CANTINA

1364 Cape St. Claire Road, Annapolis, MD 21409
410-757-0002 www.broadneckgrill.com

BRUSTER'S REAL ICE CREAM

160 Ritchie Highway, Suite A-12, Severna Park, MD 21146
410-793-5010 www.brusters.com

CAFÉ BRETTON

849 Baltimore-Annapolis Blvd., Severna Park, MD 21146
410-647-8222 www.cafebretton.com

CAFE MEZZANOTTE

760 Ritchie Highway, Severna Park, MD 21146
410-647-1100 www.cafemezzanotte.com

CAFE RIO

586 Ritchie Highway, Severna Park, MD 21146
443-906-1810 www.caferio.com

CAKES AND CONFECTIONS BAKERY CAFÉ

342 Ritchie Highway, Severna Park, MD 21146
410-757-7100 www.cakesandconfections.com

CARINI'S PIZZA

160 Ritchie Highway, Severna Park, MD 21146
410-647-1155 www.carinispizzamd.com

CHEERS & SPIRITS

1460 Ritchie Highway, Suite 115, Arnold, MD 21012
443-221-7340 www.cheersspirits.com

CHICK-FIL-A - SEVERNA PARK

511 Ritchie Highway, Severna Park, MD 21146
410-647-6232 www.spca.com

CHINA GARDEN CAFE

1278 Bay Dale Drive, Arnold, MD 21012
410-757-3388

CHINA GOURMET

685 Old Mill Road, Millersville, MD 21108
410-729-2598 www.chinagourmetmillersville.com

CHIPOTLE MEXICAN GRILL

575 Ritchie Highway, Severna Park, MD 21146
410-315-9501 www.chipotle.com

COCOA LOCO

877 Baltimore-Annapolis Blvd., Suite 207 B, Severna Park, MD 21146
410-421-7736 www.cocoaloco.life

CORWELL AND SONS LIQUORS

170 Baltimore-Annapolis Blvd., Severna Park, MD 21146
410-647-9336 www.corwellliquors.com

DAWSON'S LIQUORS

589 Baltimore-Annapolis Blvd., Severna Park, MD 21146
410-544-6200 www.dawsonliquor.com

DOMINO'S PIZZA - ARNOLD

963 Ritchie Highway, Arnold, MD 21012
410-421-9400 www.pizza.dominos.com/

Bella's Liquors

f BEER • FINE WINES • LIQUOR i

Serving the
Cape Community
for over
45 years!

HOURS:
Mon-Sat 9am-10pm
Sunday 9am-8pm

MONDAYS Military, Seniors
& Teachers save 10%

TUESDAYS Wine Day —
All wines discounted 15%

THANKFUL THURSDAY
Gift Card Giveaways to
local small businesses

1376 Cape St. Claire Road
Cape St. Claire Shopping Center
410-757-0019
www.bellasliquors.com

Smith's Marina

on the Severn River



- Full Service Repair & DIY
- 35-Ton Travel Lift • Bottom Painting
- Cleaning & Waxing • Slips (Wet & Lift)
- Marine Supply Store
- Snacks, Ice, Bait & Tackle
- Fuel Dock & Pump Out
- Winter Storage • Free WiFi
- Public Boat Ramp • Mechanic On Site



SRA Severn River Association
www.severnriver.org

Interlux
yachtpaint.com

MTAM
Marine Trade Association of Maryland

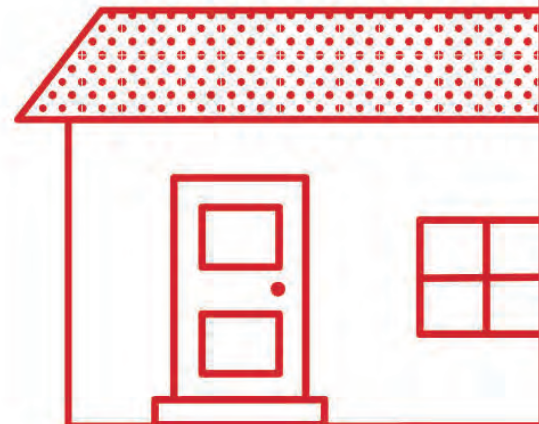


Family Owned and Operated Since 1936
529 Ridgely Road, Crownsville, MD 21032
(410) 923-3444 info@smithsmarina.com
www.smithsmarina.com



Personal meal delivery is a tap away

Chick-fil-A® service, delivered.
Download the Chick-fil-A App
now and get your favorite
chicken sandwich at your door.



Chick-fil-A® Delivery available from 8 AM to 9 PM. Now available at Chick-fil-A Severna Park.

DOMINO'S PIZZA - MILLERSVILLE

672 Old Mill Road, Millersville, MD 21108
410-987-3000 www.pizza.dominos.com

DONNELLY'S DOCKSIDE

1050 Deep Creek Avenue, Arnold, MD 21012
410-757-4045 www.donnelysdockside.com

DONUT SHACK

497 Ritchie Highway, Severna Park, MD 21146
410-544-0278 www.theshackisback.com

DUNKIN'

604 Ritchie Highway, Severna Park, MD 21146
410-315-9196

EDIBLE ARRANGEMENTS

344 Ritchie Highway, Severna Park
410-431-7030 www.ediblearrangements.com

EINSTEIN BROS. BAGELS

595 Ritchie Highway, Severna Park, MD 21146
410-544-9470 www.einsteinbros.com

EL POBLANO

497 Ritchie Highway, Severna Park, MD 21146
410-421-8044

FIREHOUSE SUBS

574 Ritchie Highway, Severna Park, MD 21146
410-703-1541 www.firehousesubs.com

FISHPAWS MARKETPLACE

954 Ritchie Highway, Arnold, MD 21012
410-647-7363 www.fishpawsmarket.com

FIVE GUYS BURGERS & FRIES

549 Ritchie Highway, Severna Park, MD 21146
410-647-1322 www.fiveguys.com

THE FROYO HOUSE - ARNOLD

1276 Bay Dale Drive, Arnold, MD 21012
443-949-0248 www.thefroyohouse.com/menu-arnold

THE FROYO HOUSE - SEVERNA PARK

550 Baltimore-Annapolis Blvd., Severna Park, MD 21146
410-975-5676 www.thefroyohouse.com/menu-severna-park

GARRY'S GRILL

553 Baltimore-Annapolis Blvd., Severna Park, MD 21146
410-544-0499 www.garrysgrill.com

GINA'S CANTINA

8779 Veterans Highway, Millersville, MD 21108
410-923-8226 www.ginascantinamd.com

GLORY DAYS GRILL

7939 Ritchie Highway, Glen Burnie, MD 21061
443-749-4376 www.glorydaysgrill.com

GINZA JAPANESE STEAK & SUSHI BAR

147 Ritchie Highway, Severna Park, MD 21146
410-777-9393 www.ginzasushihouse.com

GOSKA'S LIQUORS

501 Leelyn Drive, Severna Park, MD 21146
410-647-4041 www.goskas.com

HARBOUR SPIRITS

527 Benfield Road, Severna Park, MD 21146
410-544-6377 www.harbourspirits.com

HELLAS RESTAURANT AND LOUNGE

8498 Veterans Highway, Millersville, MD 21108
410-987-0948 www.hellasrestaurantandlounge.com

HONEY BAKED HAM

560-H Ritchie Highway, Severna Park, MD 21146
410-544-6464 www.pickup.honeybaked.com

HONG KONG RESTAURANT

1450 Ritchie Highway 106, Arnold, MD 21012
410-349-0800

JENOS STEAKS

552 Baltimore-Annapolis Blvd., Severna Park MD 21146
 410-544-1416
www.jenossteaksmd.com

JOE'S SEAFOOD

403 Ritchie Highway, Severna Park, MD 21146
410-544-0780

KIRSTEN'S CAKERY

541-C Baltimore-Annapolis Blvd., Severna Park, MD 21146
410-431-5005 www.kirstenscakery.com

KYOTO JAPANESE STEAK HOUSE

568C Ritchie Highway, Severna Park, MD 21146
410-647-4500 www.kyotomd.com

JERSEY MIKE'S SUBS

551 Ritchie Highway, Severna Park, MD 21146
410-315-6980 www.jerseymikes.com

JIMMY JOHN'S

537 Ritchie Highway Suite 1E, Severna Park, MD 21146
410-544-8600 www.jimmyjohns.com

LA POSTA PIZZERIA & ITALIAN KITCHEN

513 Baltimore-Annapolis Blvd., Severna Park, MD 21146
443-906-2840 www.lapostapizzeria.com

LEDO PIZZA - MILLERSVILLE

8531 Veterans Highway, Millersville, MD 21108
410-729-3333 www.ledopizza.com/store/millersville

LEDO PIZZA - SEVERNA PARK

552-E Ritchie Highway, Severna Park, MD 21146
410-544-3344 www.ledopizza.com/store/severna-park

LEMONGRASS -ARNOLD

959 Ritchie Highway, Arnold, MD 21012
410-518-6990 www.lemongrassannapolis.com

LIBATIONS TAVERN

8541 Veterans Highway, Millersville, MD 21108
410-987-9800 www.libationsmd.com

LIFE PHO

484 Ritchie Highway, Suite C, Arnold, MD 21012
410-544-8884

LISA'S CAKEPOPS

836 Ritchie Highway, Severna Park, MD 21146
443-346-4011 www.lisacakepops.com

LITTLE CARMINE'S N.Y. PIZZA KITCHEN

523 Benfield Road, Severna Park, MD 21146
410-432-6160 www.lilcarmines.com

MAGOTHY WINE & SPIRITS

147 Ritchie Highway, Severna Park, MD 21146
410-975-9463 www.magothywine.com

MCDONALD'S - ARNOLD

1464 Ritchie Highway, Arnold, MD 21012
410-626-7433 www.mcdonalds.com

MCDONALD'S - SEVERNA PARK

502 Baltimore-Annapolis Blvd., Severna Park, MD 21146
410-544-0595 www.mcdonalds.com

MCDONALD'S - SEVERNA PARK

541 Ritchie Highway, Severna Park, MD 21146
410-544-6606 www.mcdonalds.com

MI PUEBLO II

554-A Ritchie Highway, Severna Park, MD 21146
410-544-4101 www.mipueblo2.com

MOTHER'S PENINSULA GRILLE

969 Ritchie Highway, Arnold, MD 21012
410-975-5950 www.mothersgrille.com

MING'S CAFÉ

480 D Ritchie Highway, Severna Park, MD 21146
410-544-9991 www.mingscafe.net

MOD PIZZA

553 Ritchie Highway, Severna Park, MD 21146
410-544-1872 www.modpizza.com

MUTT & JOE

543 Benfield Road, Severna Park, MD 21146
410-793-5340 www.muttandjoe.com

NAVAL BAGELS

1460 Ritchie Highway, Suite 112, Arnold, MD 21012
410-349-2245 www.navalbagelsinc.com



CAFE MEZZANOTTE



FARM TO TABLE ITALIAN CUISINE

760 Ritchie Hwy, Severna Park MD 21146

410-647-1100 FB @therealCafeMezz IG @cafemezzanotte

WWW.CAFEMEZZ.COM



THANK YOU

FOR YOUR SUPPORT!



We are here to serve you through drive thru, third party delivering and dine-in.

8100 VETERANS HWY MILLERSVILLE MD 21108

CURBSIDE PICKUP AVAILABLE! - CALL 410-544-6200

SUN-MON 8AM-8PM | TUE-THU 7AM-8PM | FRI 7AM-9PM | SAT 8AM-9PM

DAWSON'S LIQUORS

10% OFF ALL SPIRITS*

*750ML & 1L ONLY - EXCLUDES 1.75L NOT VALID WITH ANY OTHER SALES



EXPIRES 1/31/22

DAWSON'S LIQUORS

10% OFF ALL WINE

NOT VALID WITH ANY OTHER SALES



EXPIRES 1/31/22

DAWSON'S LIQUORS

15% OFF 6 OR MORE WINE BOTTLES

NOT VALID WITH ANY OTHER SALES



EXPIRES 1/31/22

OPEN THANKSGIVING, CHRISTMAS AND NEW YEARS! SALES & MORE ONLINE! WWW.DAWSONSLIQUORS.COM



OPEN 365 DAYS A YEAR! 410-544-6200

589 BALTIMORE ANNAPOLIS BLVD SEVERNA PARK, MD 21146

@DAWSONSLIQUORS DAWSONSLIQUORS

Winkelmeyer Store — built in 1945 — operated as a coal and feed establishment.

It later became a hardware store owned by Walter and Mary Jane Winkelmeyer.



Earleigh Heights Volunteer Fire Department was founded in 1918. This was their 1914 Model T fire truck.



Severna Park Railroad Station — built in 1919 — served the B&A Railroad and the Post Office until 1950.



Grotzky's Store located at 4 Riggs Road was built in 1908. In 1929 it was purchased by Dr. John Codd and served as a pharmacy. Cliff Dawson rented the property in 1944 and operated a variety store. Dawson's store moved to the corner of B&A Boulevard in the 1950's.



Betty Winkelmeyer Wells
540 Baltimore-Annapolis Blvd.
Severna Park, MD 21146

-1945 — The Winkelmeyers started as a coal yard/animal feed and freight delivery company which had a railroad siding for freight cars

-Wink & Jane were very involved in the community. They were instrumental in the growth of the local area as they assisted with organizations, non-profits and the like

-Jane organized the Polio vaccine for the community and together her and Wink organized the purchase of the Health Center building

-Wink founded the Greater Severna Park Arnold Chamber of Commerce

-The excitement from the growth in Severna Park was non-stop

-The generosity of the residents to financially support local businesses has preserved the value of their homes and ensured the success of this wonderful community. The Winkelmeyer Family owes everything to these residents and also to God's blessings.

SEVERNA PARK MUSEUM, INC.

501(c)(3) — Mailing address, 528 Melrose Lane, Severna Park, MD 21146

Sponsored by the Winkelmeyer Family, Betty Winkelmeyer Wells

“HISTORY IS FOREVER”

The Board of Directors acknowledges & appreciates the following individuals for their contribution in making the museum become a reality:

- Brian S. Jablon, Attorney, Wellens & Jablon LLC, Attorneys at Law
- Karl J. Appel, CPA, Gardiner & Appel Group for Accounting
- Severna Park Voice for publishing the history column
- Severna Park Elks Club for a meeting place

Donors sponsoring this ad - Karen Renee Interior Design, Inc - Scott & Donna Jay - Mike & Amy Leahy - Susan Nolte - Barba Quillen - Brian & Christine Ronk - Maureen Carr-York - Steve & Krista Latchaw

NOODLES & COMPANY

552 B Ritchie Highway, Severna Park, MD 21146
410-544-0351 www.noodles.com

O'LOUGHLIN'S RESTAURANT

1258 Bay Dale Drive, Arnold, MD 21012
410-349-0200 www.oloughlinspub.com

OISHI JAPANESE CUISINE

1450 Ritchie Highway, Arnold, MD 21012
443-402-3150 www.oishisushimd.com

PAPA JOHN'S PIZZA

586 Benfield Road, Severna Park, MD 21146
410-544-6262 www.papajohns.com

PARK TAVERN

580 Ritchie Highway, Severna Park, MD 21146
410-793-5930 www.parktavernsp.com

PIZZA BOLI'S - ARNOLD

1450 Ritchie Highway, Arnold, MD 21012
410-757-7700 www.pizzabolis.com

PIZZA BOLI'S - SEVERNA PARK

352 A Ritchie Highway, Severna Park, MD 21146
410-975-0700 www.pizzabolis.com

THE POINTE CRAB HOUSE

700 Mill Creek Road, Arnold, MD 21012
410-544-5448 www.thepointcrabhouse.com

POKE & RAMEN

1274 Bay Dale Drive, Arnold, MD 21012
443-775-5837 www.pokeandramen.com

PORT TACK LTD. WINE & SPIRITS

1246 Bay Dale Drive, Arnold, MD 21012
410-974-0800 www.porttackltd.com

QDOBA MEXICAN EATS

147 Ritchie Highway, Suite H, Severna Park, MD 21146
410-647-4794 www.qdoba.com

RASA JUICE SHOP

90 Maryland Avenue, Annapolis, MD 21401
410-570-4597 www.rasajuiceshop.com

RISE UP COFFEE ROASTERS

1296 Bay Dale Drive, Arnold, MD 21012
443-949-8754 www.riseupcoffee.com

RITA'S OF SEVERNA PARK

567 Baltimore-Annapolis Blvd., Severna Park, MD 21146
410-647-1265 www.ritasice.com

RIVERA'S

594 Benfield Road, Severna Park, MD 21146
410-544-4102 www.riveramexican.webs.com

ROMILO'S RESTAURANT & BAR

478-A Ritchie Highway, Severna Park, MD 21146
410-544-6188 www.romilosrestaurant.com

SEVERNA PARK TAPHOUSE

58 W. Earleigh Heights Road, Severna Park, MD 21146
410-793-5759 www.severnaparktaphouse.com

SHOOTER'S SPORTS BAR & GRILL

904 Ritchie Highway, Severna Park, MD 21146
410-544-4669 www.shootersbarandgrill.com

SMOOTHIE KING, SEVERNA PARK

556-E Ritchie Highway, Severna Park, MD 21146
443-906-2512 www.smoothieking.com

SOFI'S CREPES

560 Baltimore-Annapolis Blvd., Severna Park, MD 21146
410-647-6300 www.sofiscrepes.com

SPIZZICO ITALIAN KITCHEN

1282 Bay Dale Drive, Arnold MD, 21012
443-214-5121 www.spizzicorestaurant.com

SQUISITO PIZZA AND PASTA

548 Baltimore-Annapolis Blvd., Severna Park, MD 21146
410-647-5220 www.squisitopizzaandpasta.com

STARBUCKS

503 Ritchie Highway, Severna Park, MD 21146
410-544-3240 www.starbucks.com

STEAK 'N SHAKE

8100 Veterans Highway, Millersville, MD 21108
443-685-3547 www.steaknshake.com

STONEY CREEK INN

8238 Fort Smallwood Road, Pasadena, MD 21226
410-439-3123 www.stoneycreekinnrestaurant.com

SULLIVAN'S COVE

552 Ritchie Highway, Severna Park, MD 21146
410-432-2012 www.sullivancovesp.com

SUBWAY - ARNOLD

1450 Ritchie Highway, Suite 105, Arnold, MD 21012
410-757-2630 www.order.subway.com

SUBWAY - SEVERNA PARK

574 Benfield Road, Severna Park, MD 21146
410-647-0032 www.order.subway.com

SUBWAY - SEVERNA PARK

580 Ritchie Highway, Suite A, Severna Park, MD 21146
410-216-1046 www.order.subway.com

SUSHI Q

691 Old Mill Road, Millersville, MD 21108
443-685-3325 www.sushiqmd.com

SZECHUAN CAFÉ

4315 F-G Mountain Road, asadena MD 21122
410-255-8555 www.szechuancafe.com

SZECHUAN INN

550-558 Benfield Road, Severna Park, MD 21146
410-544-0227 www.szechuaninnmd.com

TACO BELL

578 Richie Highway, Severna Park, MD 21146
410-647-8150 www.tacobell.com

THAI PARADISE

57 W. McKinsey Road, Severna Park, MD 21146
410-544-7622 www.thaiparadisemd.com

TWAIN'S TAVERN & GRILL

8359 Baltimore-Annapolis Blvd., Pasadena, MD 21122
410-647-5200 www.twainstavern.com

TWO RIVERS STEAK & FISH HOUSE

4105 Mountain Road, Pasadena, MD 21122
410-360-1919 www.tworiverssteak.com

UBER BAGELS & DELI

147 Ritchie Highway, Severna Park, MD 21146
410-544-7396 www.uberbagels.com/locations

VIDA TACO BAR

541 Baltimore-Annapolis Blvd., Severna Park, MD 21146
410-544-2300 www.vidatacobar.com

Shopping & Specialty Retail

ADMIRAL CLEANERS

40 W. McKinsey Road, Severna Park, MD 21146
410-647-7510 www.admiralcleaners.com

AMERICAN PROMOTIONS

410-647-6452

BENFIELD GALLERY

485 Jumpers Hole Road, Severna Park, MD 21146
410-544-2299 www.benfieldgallery.com

BARRANCO SEVERNA PARK FUNERAL HOME & CREMATION CARE, P.A.

495 Ritchie Highway, Severna Park, MD 21146
410-647-2400 www.barrancofuneralhome.com

BIKE DOCTOR

953 Ritchie Highway, Arnold, MD 21012
410-544-3532 www.bikedoctor.com

BLENDED ESSENTIALS

562 Baltimore-Annapolis Blvd., Severna Park, MD 21146
410-544-2050 www.theblendededessentials.com

BROADLEAF TOBACCO

487 Ritchie Highway, Suite 101, Severna Park, MD 21146
410-315-8118 www.broadleaftobacco.com

BULLDOG SCHWINN & SPORTS

405 Ritchie Highway, Severna Park, MD 21146
410-544-6453 www.bulldogschwinn.com

CLEMENT HARDWARE

500 Ritchie Highway, Severna Park, MD 21146
410-647-4611 www.clementhardware.com

THE COTTAGE

562 B Ritchie Highway, Severna Park, MD 21146
410-647-6742 www.shophthecottage.com

DAVID'S NATURAL MARKET

871 Annapolis Road, Gambrills, MD 21054
410-987-1533

FRANKLIN'S TOYS

558A Ritchie Highway, Severna Park, MD 21146
410-544-1844 www.franklinstore.com

HOUCK'S MENSWEAR

1382 Cape St. Claire Road, Annapolis, MD 21409
410-757-5500

IMPRINTED SPORTSWEAR

401 Headquarters Drive, Millersville, MD 21108
410-729-0360 www.imprintedsportswearmd.com

LET'S GROW

25 Magothy Beach Road, Suite 103, Pasadena, MD 21122
410-255-0903 www.letsgrowow.com

MAHER'S FLORIST

8095-C Edwin Raynor Boulevard, Pasadena, MD 21122
410-255-6120 www.mahersflorist.com

MY VINTAGE VINYL

1244 Ritchie Highway, Suite 13, Arnold, MD 21012
410-960-2919 www.myvintagevinyl.com

PARK HOME

568-E Ritchie Highway, Severna Park, MD 21146
410-544-1127 www.parkhomestyle.com

PARK PLAZA MERCHANT'S ASSOCIATION

550-582 Ritchie Highway, Severna Park, MD 21146

PARTNERS IN CARE BOUTIQUE

8151-C Ritchie Highway, Pasadena, MD 21122
410-544-0568 www.partnersincare.org

PASADENA PAWN & GUN

3306 Mountain Road, Pasadena, MD 21122
410-255-1272 www.pasadenapawnandgun.com

PEDAL PUSHERS

546 Baltimore-Annapolis Blvd., Severna Park, MD 21146
410-544-2323 www.pedalpushersmd.com

SAVVY CONSIGNMENT

553 Baltimore-Annapolis Blvd., Severna Park, MD 21146
410-647-1636 www.savvyconsignment.com

SEVERNA FLOWERS & GIFTS

40B W. McKinsey Road, Severna Park, MD 21146
410-647-6501 www.severnaflowersandgifts.com

SHOE SPECIALIST

568 Benfield Road, Severna Park, MD, 21146
410-544-2129 www.shoespecialistsp.com

SIDE STREET FRAMERS

558 B Ritchie Highway, Severna Park, MD 21146
410-544-9050 www.sidestreetframers.com

SML FOOTWEAR ETC.

401 Headquarters Drive, Suite 102, Millersville, MD 21108
443-685-3779 www.sockdepot.square.site

SOCCER POST

489 Ritchie Highway, Severna Park, MD 21146
443-906-2153 www.soccerpost.com

STEVENS BATTERY WAREHOUSE

8220 Ritchie Highway, Pasadena, MD 21122
410-544-2441 www.stevensbattery.com

WILD BIRD CENTER OF SEVERNA PARK

568 G Ritchie Highway, Severna Park, MD 21146
410-647-2453 www.wildbird.com

WILD EWES WOOLERY

836 Ritchie Highway, Suite 17F, Severna Park, MD 21146
410-975-5629 www.wildeweswoolery.com

ZACHARY'S JEWELERS

522-A Ritchie Highway, Severna Park, MD 21146
410-544-4005 www.zacharysjewelers.com

Come see our HUGE selection
of Unique Toys to keep
EVERYONE entertained!

Franklin's Toys



Franklin's Toys
All Play All Day

Park Plaza Severna Park 410.544.1844
Festival at Riva Annapolis 410.224.2411
www.franklinstore.com

Hours
Monday - Thursday
10:00am-6:00pm
Friday - Saturday
10:00am-8:00pm
Sunday
10:00am-5:00pm

SEVERNA PARK FLORIST, INC. T/A SEVERNA FLOWERS & GIFTS

40-B West McKinsey Road
Severna Park, MD 21146

410-647-6501
800-582-6955

www.severnaflowersandgifts.com

Visit us on Facebook

teleflora



WE PROVIDE THE BEST HOME SECURITY SYSTEMS!
Come See Us Today!
SPECIALIZING IN HOME DEFENSE WEAPONS

We Pay Cash For Gold!



410-255-1272

3306 MOUNTAIN ROAD | PASADENA, MD 21122 | WWW.PASADENAPAWNANDGUN.COM



Mom's home is 1,700 square feet of memories.

We give people the help they need to live in the place they love.™



Delivered with heart.™

410-975-9750

GriswoldHomeCare.com

#140029



Zeskind's Door, Window
& Millwork Showroom

Serving Contractors, Architects, Designers and Homeowners

Arnold Station Shopping Center
1450 Ritchie Highway, Arnold, MD 21012

410-233-1919 Ext #110

www.zeskind.com



**BERKSHIRE
HATHAWAY**
HomeServices

PenFed
Realty

Severna Park Office



STEVENMURPHY
REALTOR®

Making your Real Estate dreams a Reality.



Steven Murphy, Realtor®

Cell 410-404-4393

steven.murphy@penfedrealty.com

Severna Park Office

565 Benfield Road, Suite 100 Severna Park, MD 21146



**Caring
for the
community**

umbwmc.org

**Be a part
of something
greater**



UNIVERSITY *of* MARYLAND
BALTIMORE WASHINGTON
MEDICAL CENTER

JASON LABARGE

FINANCIAL ADVISOR



RETIRE

WITH MORE
THAN JUST

MONEY

Call us to set up an appointment today!
(443) 837-2542

JASON LABARGE

Financial Advisor

Premier Planning Group

115 West Street, Suite 400 Annapolis, MD

www.JasonLaBarge.com

 @RetireAnnapolis

 @RetireAnnapolis

Jason LaBarge, Financial Advisor, offering securities through Cetera Advisor Networks LLC, member FINRA/SIPC. Advisory services offered through Summit Financial Group, Inc., a registered investment advisor. Premier Planning Group is an independent firm. Summit and Cetera are affiliated and under separate ownership from any other named entity.