

HOLIDAY

LOCAL
POSTAL
CUSTOMER

ECRWSS
US POSTAGE
PAID
PERMIT NO. 546
Millersville, MD

SHOPPING, DINING & ENTERTAINMENT EDITION

NOVEMBER
2022

SANTA IS COMING TO TOWN!

Page 5

Kris Kringle will travel to the Severna Park area to spread holiday cheer.

LOCAL GIFT IDEAS

Page 12

You don't have to venture far to shop for everyone on your list.

HOLIDAY RECIPES

Page 26

Bake and mix drinks like the pros this holiday season.

SEVERNA PARK  VOICE

SERVING OUR COMMUNITY SINCE 1981

THE SOCIAL

Be SOCIAL this Holiday Season!



Purchase a **\$100 Gift Card** & Receive a **\$20 Gift Card** for **FREE!**



Now Taking
Reservations For
Christmas Eve &
New Year's Eve.

To purchase Gift Cards or to make
your Holiday Reservations, visit
www.thesocialsp.com



NEW ONLINE ORDERING!

Online Carry Out And Delivery
Ordering Is Also Available



139 Ritchie Highway Suite A | Severna Park, MD 21146
(Magothy Gateway next to the Harris Teeter)

Lunch: Thursday–Saturday 11:30 | Dinner: Tuesday–Saturday

410.544.2457 | TheSocialSP.com |   @TheSocialSPMD

the Cottage

A TIME FOR GIVING!

VISIT US FOR THIS SEASON'S BEST SELECTION OF...



COZY ESSENTIALS



JEWELRY



APPAREL & ACCESSORIES



PARTY DRESSES

DON'T MISS BLACK FRIDAY & SMALL BUSINESS SATURDAY!



**FREE
WRAPS
& HATS**

**During Black
Friday Weekend!**

*With
Qualifying
Purchase*



GIFTS

SHOP EARLY & SHOP LOCAL THIS HOLIDAY SEASON!

f @ShopTheCottageSP

ig @ShopTheCottage

SHOPTHECOTTAGE.COM

THE COTTAGE

562-B RITCHIE HWY
SEVERNA PARK, MD 21146

THE COTTAGE ON MAIN

149 MAIN STREET
ANNAPOLIS, MD 21401

Visit

ShopTheCottage.com

**for a full list of all our
Holiday Events!**

Great selection of greeting cards, holiday and special occasion gifts, and stocking stuffers.



410-571-3486

1460 Ritchie Hwy, Ste #116
Arnold, MD 21012

Scan QR-code to follow us on Instagram for our tasting schedule.



Under New Ownership and Management



Santa Is Coming!
Saturday, December 3 • 11-2
Families and pets are welcome.
Proceeds will benefit the SPCA.

Come experience our Polar Express Lionel train display!
December 1-31



20% off
beer, wine or liquor.
Discount only applicable towards one item.
Expires December 31, 2022.

Everyday Special
Receive 10% off a half a case of wine or 15% off a full case of wine.

SANTA PLANS EVENTS AROUND SEVERNA PARK

By Alyson Kay

This holiday season, Santa will travel from the North Pole to spread holiday cheer across the Severna Park area. In some locations, Santa will join Mrs. Claus, the Grinch, and his elves for some festivities.

HOMESTEAD GARDENS SANTA

Between November 26 and December 18, Santa will be at Homestead Gardens' Severna Park location for photo opportunities. Available hours vary between 10:00am and 1:55pm. There will be no charge for visits, and families will need to bring their own cameras. Register at www.homesteadgardens.com/upcoming-event/santa-in-severna-park.

ST. JOHN THE EVANGELIST ADVENT MARKET CELEBRATION

Santa will return to St. John the Evangelist Catholic Church's advent market on November 26 from 11:00am to 4:00pm outside the church. Parents can take pictures of Santa with their kids for a donation. Food, handmade crafts and art, Catholic books, and religious items will also be available for purchase at Larsen Field and the church auditorium. At noon, the church will offer free pony rides. At 1:00pm, there will be a petting zoo. Mass will be at 5:15pm, and a live nativity will be held starting at 6:15pm.

CHAMBER OF COMMERCE TREE LIGHTING

Santa will join the Grinch for photos at the Greater Severna Park and Arnold Chamber of Commerce tree lighting on December 2 from 5:00pm to 6:30pm. Families can enjoy music, performances, cookies and cider at this free event. Register at www.gspacc.com.

KINDER FARM JINGLE BELL HAYRIDES

Santa and Mrs. Claus will arrive at Kinder Farm Park for its annual holiday hayrides on December 3. Hayrides are available between 10:15am to 12:45pm for \$10, plus a small processing fee. Children 3 and under are free. Children 10 and under must be accompanied by an adult. Snacks, warm drinks and roasted marshmallows will be available. Attendees will also be able to visit the decorated holiday farmhouse.

CHEERS WINE & SPIRITS PET PHOTOS

Santa will be at Cheers Wine & Spirits on December 3 from 11:00am until 2:00pm for photos with pets. All the proceeds will go to the Society for the Prevention of Cruelty to Animals. The price for photos has not been finalized at the time of writing.

CTA'S BREAKFAST WITH SANTA

Santa and his elves will be at the Children's Theatre of Annapolis for a Breakfast with Santa event on December 4 from 9:00am until 10:30am. Families will be able to participate in thematic games and carols, as well as photo opportunities with Santa. Breakfast will be provided. Parents are asked to secretly provide a gift of \$20 or less with their child's name for him to give them when their name is called from his list of good boys and girls. Drop off gifts before the event. Contact info@childrenstheatreofannapolis.org for more information. Tickets are available for purchase at www.childrenstheatreofannapolis.org/event/breakfast-with-santa/2022-12-04.

LAKESHORE PLAZA TREE LIGHTING

Santa will join the Pasadena Business Association for the lighting of Pasadena's "official" Christmas tree for a special visit in his magic sleigh on December 6 at 5:30pm. The event will also feature fire apparatus from Lake Shore and Riviera Beach Volunteer fire companies, Christmas carolers and hot chocolate. The event is free and open to the public. To learn more, visit www.pasadenabusinessassociation.com/christmas-tree-lighting.

HOT COCOA WITH SANTA

The holidays are a fun time for pets, too. Join VCA Calvert Veterinary Center on December 8 from 6:00pm-8:00pm for hot cocoa and pet photos with Santa. The event will also feature local vendors and pet trainers. VCA Calvert Veterinary Center will accept charitable donations for area rescue groups. For more information, call 410-360-7297.

SANTA ON THE B&A TRAIL

On December 10, Santa will travel down the B&A Trail to collect nonperishable food for the Anne Arundel County Food Bank. The start time and schedule of stops are to be announced. Hot chocolate, coffee and donuts will be served at the Earleigh Heights Ranger Station. For schedule updates, visit www.friendsofatrails.org/santa-on-the-trails.

CHICK-FIL-A BREAKFASTS WITH SANTA COW

On December 10 and 17 from 8:00am to 10:00am, Santa Cow will return to the Severna Park Chick-fil-A for its Breakfasts with Santa Cow events. A photographer will snap pictures at this free event, and there will be crafts and stuffed cows available for attendees. No RSVP is required.



STORYTIME WITH MATILDA AND THE GRINCH

Santa will send his elf Matilda to read stories to children at Park Books & Litcolab on December 10 from 11:00am-2:00pm. There is a limit of 20 children. Matilda will also take pictures and collect "Dear Santa" letters. All letters with return addresses will receive a personalized letter back from the North Pole. RSVP for the event and consider seeing the Grinch, who will visit Park Books for storytime and crafts on December 3 from 11:00am-2:00pm. Register by going to www.parkbooksmd.com/events.

COOKIES WITH SANTA AT SEVERNA PARK TAPHOUSE

Santa is coming to Severna Park Taphouse on December 11 at noon. To reserve your seat, call 410-793-5759. ■

“Christmas With the Celts” will bring ancient Irish Christmas carols and lively Irish dance to Rams Head On Stage in Annapolis on December 6.



Live Shows Make The Holidays Come Alive

By Zach Sparks

zach@severnarkvoice.com

Will Ferrell’s character Buddy may have put it best in the film “Elf” when he said, “The best way to spread Christmas cheer is singing loud for all to hear.”

Anne Arundel County offers plenty of live theater and concerts during the holiday season. All attendees are invited to sing along, cheer and get in the holiday spirit while enjoying the following shows.

“It’s A Wonderful Life”

*Presented by Toby’s Dinner Theatre
Now through January 15*

Based on the beloved 1946 film, this musical faithfully follows George Bailey’s life from his childhood dreams to his midlife disappointments and beyond, as George takes a journey to discover whether his life has mattered at all. Toby’s original adaptation breathes musical life into a familiar story, while retaining the warmth and humor of the original.

“Toby Orenstein herself worked to create this original adaptation over 30 years ago and credits the story’s heart, warmth, family values and amazing original musical score as the reason the show continues to be a sellout, critical hit,” said Mark Minnick, an associate producer with Toby’s.

Ticket information and showtimes are available at www.tobysdinnertheatre.com or by calling the box office at 410-730-8311.

“White Christmas”

*Presented by Classic Theatre of Maryland
November 25 through December 24*

This reimagined tribute to Bob Wallace and Phil Davis, two iconic song-and-dance men, follows a sister act to Vermont only to discover that the nearly bankrupt lodge they were to perform at is owned by their former commanding general.

“How The Grinch Stole Christmas”

*Presented by Pasadena Theatre Company
Anne Arundel Community College’s
Humanities Hall
Playing December 2 through December 11*

“No one should be alone on Christmas,” according to the Grinch. And no one has to be alone when they can instead choose to spend their time with their fellow theatergoers at Anne Arundel Community College.

Based on the classic Dr. Seuss poem, the play version of “How the Grinch Stole Christmas” also follows the Grinch as he tries to rob the Whos of their happiness before he becomes changed in the process.

The show will come to life with the Grinch, Cindy Lou Who, Postmaster Lou Who, Martha May Whovier, the mayor and many other characters living in Whoville including Max, the dog. The performance also includes musical hits “Where Are You Christmas,” “Trim

Up The Tree,” “Welcome Christmas” and “You’re A Mean One, Mr. Grinch.”

InstantSeats has tickets for the show. Learn more at www.ptcshows.com.

“A Christmas Carol”

*Presented by Classic Theatre of Maryland
December 2 through December 24*

Atribute to the Charles Dickens’ story, the Classic Theatre of Maryland adaptation of “A Christmas Carol” is meant to inspire a spirit of charity toward those less fortunate.

“The world premiere adaptation by Sally Boyett and Donald Hicken, who also directs, brings the classic tale of Ebenezer Scrooge to life with superb performances and stunning visuals that transport you to Victorian-era London,” said Jeanie Casison, a writer for Maryland Theatre Guides.

For more information or to purchase tickets for Classic Theatre of Maryland’s upcoming holiday shows, visit www.classictheatremaryland.org.

“An Annapolis Christmas”

*Rams Head On Stage
December 6-31*

The Annapolis venue has a full slate of holiday events. Enjoy timeless ancient Irish Christmas carols and lively Irish dance during “Christmas With the Celts” on December 6. Peter Mayer will bring his Christmas tour, “Stars and Promises,” to Rams Head on December 8, followed by a performance by country

singer Pam Tillis as part of her "Belles and Bows" show on December 11.

Join Rams Head and the Annapolis Musicians Fund for Musicians on December 12 and 13 for "An Annapolis Christmas." Local artists will gather to perform a mix of original and classic holiday tunes.

"Motown & More: A Holiday Celebration" on December 18 will showcase special tunes that bring the season in with style: The Temptations' "Silent Night" and "Rudolph the Red-Nosed Reindeer," Nat King Cole's "The Christmas Song," Donny Hathaway's "This Christmas," and Eartha Kitt's "Santa Baby" — to name a few.

Rounding out the holiday schedule at Rams Head On Stage, Jonathan Butler's "Oh Holy Night" Christmas featuring Grace Kelly is scheduled for December 21, and the '80s tribute band The New Romance will ring in the new year on December 31. Skinny ties, Members Only jackets, big hair and crazy neon spandex are encouraged for the New Year's celebration.

Tickets include a champagne toast at midnight. For more information, visit www.ramsheadonstage.com.

"Holiday Wishes"

*Presented by Talent Machine Company
Indian Creek School*

Playing December 9 through December 23

A cast of kids ages 7 to 18 will share their take on some holiday classics. Audiences can sing along with Rudolph, Frosty the Snowman and Santa.

Learn more or purchase tickets by going to www.talentmachine.com.



"The Nutcracker"

*Presented by Ballet Theatre of Maryland
Maryland Hall*

*Playing December 10 through
December 18*

Ballet Theatre of Maryland's "The Nutcracker," which features choreography by former director Dianna Cuatto, retells Clara's timeless adventure to rescue her beloved Nutcracker from the Rat Queen's evil spell. Audiences will travel with her through the whirling Kingdom of Snow to the Land of the Sweets, capturing the spirit of the holiday season in the language of dance and theater.

"Like many holiday traditions, 'The Nutcracker' is the kind that gets passed down from one generation to the next," Ballet Theatre of Maryland Artistic Director Nicole Kelsch said in

Photo courtesy of Joanne Marie Photography

Ballet Theatre of Maryland's "The Nutcracker" retells Clara's timeless adventure to rescue her beloved Nutcracker from the Rat Queen's evil spell.

a statement. "Parents who bring their children each year will often share their own memories of first seeing the show. For many young audience members, seeing 'The Nutcracker' is an important event that they will carry with them always."

At the Sugar Plum Parties, held an hour before each Sunday show, ticket holders can take pictures with their favorite characters and enjoy light refreshments before the performance.

For more information, visit www.balletmaryland.org/nutcracker.

"The Nutcracker"

*Presented by Chesapeake Ballet Company
Children's Theatre of Annapolis*

*Playing December 10-11 and
December 16-18*

Chesapeake Ballet Company will also continue its annual tradition of enchanting audiences with "The Nutcracker." Clara and her Nutcracker Prince will traverse the magical snow forest to the land of the sweets, where Clara meets the Sugar Plum Fairy. Chesapeake Ballet Company aspires to tell this classic winter tale beautifully through dance.

For more information, visit www.chesapeakeballetcompany.com. ■



Photo courtesy of Talent Machine Company

A cast of kids ages 7 to 18 will share their take on some Christmas classics during "Holiday Wishes," presented by Talent Machine Company. Audiences can sing along with Rudolph, Frosty the Snowman and Santa.

www.blackwallhitchannapolis.com



Weekly Specials Monday - Thursday, All Day



MONDAY

ALL DAY HAPPY HOUR:
FOOD & DRINK SPECIALS



TUESDAY

\$15 FISH & CHIPS



WEDNESDAY

50% OFF ALL PASTA ENTREES
& SELECT BOTTLES OF WINE



THURSDAY

50% OFF ALL
FRESH OYSTERS



Join us for
brunch,
lunch or
dinner —
book your
reservation
today.

Be Merry! Be Bright!



IMAGE CREATORS
SALON • SPA

Image Creators
SALON • SPA • BOUTIQUE



VOTED BEST
• Hair Salon
• Spa

410-544-8852

imagecreatorssalonandspa.com | Park Plaza Shopping Center | 568 F Ritchie Highway, Severna Park, MD

\$100
Gift Card
For \$85!

Offer Starts
November 25, 2022
until December 24, 2022

Purchase Online or Walk-In

The Merchants at Park Plaza Offer a Variety of

Holiday Gift Options

FOOD & BEVERAGE

JB's Bar & Grill • Honey Baked Ham & Café
Kyoto Japanese Steakhouse • Ledo Pizza
Mezeh Mediterranean Grill • Mi Pueblo • Noodles
& Company • Park Tavern • Smoothie King
Subway • Sullivan's Cove • Taichi Bubble Tea
The Breakfast Shoppe • Taco Bell

GIFT SHOPS & RETAIL

Dance Supplies Etc • Five Below • Franklin's Toys
JOANN Fabrics & Crafts • Marc Todd Jewelers
Music & Arts • Park Home • Severna Park Kitchen
& Bath • Side Street Framers • T-Mobile • The Axe
House • The Cottage • Wild Bird Center

PROFESSIONAL SERVICES & BANKING

Coldwell Banker Realty • Edward Jones
Long & Foster Real Estate • M&T Bank
Mathnasium • The Pup Camp • United Title
& Escrow

HEALTH & BEAUTY

ATI Physical Therapy • Chesapeake Hearing • Creative Force Dance Center • Dr. Paul W. Gill, D.P.M. Podiatrist • Hair Cuttery
Hand and Stone Massage & Facial Spa • Image Creators • Kwon's Tae Kwon Do • Multi-Specialty Health Care • Olde Tyme Barber Shop
Park Fitness • Park Pharmacy • Planet Fitness • Priority Care Clinics • Severn River Dental Health Center • Split Ends • Sports Clips
Stretch Zone • Top Nails



550-582 Governor Ritchie Hwy, Severna Park, MD 21146



Make a Difference - **SHOP Local**

**Gift Cards
Make Perfect
Stocking
Stuffers
& Thank
You!**



**Buy
5 Gift
Cards and
get 1 FREE***

*\$10 minimum per card

**Breakfast,
Lunch
& Dinner**

Open 7 days a week, our restaurant is a local favorite, offering fresh ingredients, creative menu and family friendly atmosphere.

**EAT. DRINK.
BE THANKFUL.**

Garry's Grill & Catering

**HOLIDAY DINNER
BOX MEALS**

CATERING ALSO AVAILABLE

**CALL TODAY
TO RESERVE
YOUR
HOLIDAY
DINNER BOX**

410.544.0499



410-544-0499 | 553 Baltimore-Annapolis Blvd. | Severna Park, MD

garrysgrill.com

Where Friends Meet
& Locals Eat!

Hours: Monday thru Saturday 7am - 9pm • Sunday 7am - 8pm

Thinking Outside The Big-Box Stores For Personal Gifts

By Judy Tacyn

Dr. Seuss' Grinch was on to something when he realized, "It came without ribbons. It came without tags. It came without packages, boxes, or bags ... What if Christmas, he thought, doesn't come from a store. What if Christmas, perhaps, means a little bit more."

Skip the wrapping tape this year and give a gift that doesn't require a box. Non-material or experience gifts are perfect for loved ones who leave you scratching your head when making your holiday list and checking it twice.

Nonmaterial and experience gifts open a world of possibilities. From Airbnb gift certificates to national parks memberships, monthly subscription deliveries to hot air ballooning and paint nights, this Christmas, think outside the box stores and get your loved ones time and experiences they will cherish forever. Here are a few local ideas to get you thinking.

Almost everyone has someone on their gift list with a driver's license and a vehicle to maintain. Most local car wash establishments, like the Great American Car Wash on Ritchie Highway, offer gift cards as well as monthly subscription packages. A good car wash in winter will get damaging road treatments off cars to keep both the vehicle looking good and its driver happy. Gasoline gift cards are another option, especially for younger or student drivers, and are perfect for the office gift exchange.

Everyone needs a little pampering now and again, as well as routine hair and skin maintenance. Severna Park and the surrounding areas are filled with salons that offer a full range of services for both men and women. Image Creators in Severna Park specializes in luxurious spa treatments, cutting-edge hair styles, and manicure treatments from a highly trained

staff of specialists. Salon gift certificates are perfect for men and women of all ages because the recipient can choose their gift treatment, guaranteeing the gift will be perfect. In some cases, such as at Image Creators, a salon offers perks or discounts to clients who refer their friends, so a spa gift just might also give back to the purchaser. When purchasing a spa or salon gift certificate, always ask about client rewards programs for referrals and gift certificates for you. Teachers and caregivers might appreciate the personal treat.

Is there a relative in your child's life who can't come up with an idea when asked what they might like as a gift? For many, the gift of time with family is the only thing they desire. Why not consider a playdate for your child and their special friend? Kheloney is a unique and inviting place where children and adults can enjoy creative play together. Toys, crafts, books and music are just some of the free-play experiences that await. Located on Dorsey Road in Glen Burnie, Kheloney offers bilingual story time, sibling and arts and crafts sessions, summer programs and camps, as well as a happy place to celebrate with friends. One adult may accompany a child in this unique environment. There are many gyms and play environments for children, but Kheloney knows that kids of all ages love to play together, and time together is a priceless gift. Check out the free play sessions on Sunday evenings to see what makes this play space special.

For a more traditional gym experience, Severna Park has many great options for kids. Children interested in trying gymnastics or dance will love the gift of gym time, and parents will appreciate their child being able to try an activity before making a long-term investment. Docksiders

Gymnastics on Najoles Road in Millersville offers entry-level classes, and Creative Dance Force in Severna Park allows up to two free sessions, or a six-week session package.

Another family friendly sports option is attending a game at the United States Naval Academy. Basketball tickets are just \$10 for ages 19 and older, and \$5 for students. Alumni Arena is a great place to experience college basketball in a safe and respectful environment. Special events for each halftime intermission are posted on www.navysports.com and might include Mascot Mayhem, Frisbee dog exhibitions, high-flying trampoline slam dunk routines, or even local youth teams playing a quick scrimmage between halves. Kids can catch Navy T-shirts blasted into the crowd, timeout challenges, or meet the midshipmen or the academy's mascot. Navy players enjoy shaking hands after a game, and the band's playing of "Anchors Away" are memories that will last a lifetime. Individual games and season ticket packages are available.

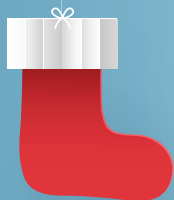
If the hard-to-buy-for person on your list enjoys live performances, Severna Park is brimming with talented musicians and entertainers, and is a destination for international groups. Anne Arundel Community College has a full array of theater, music, dance, and art shows and performances on tap and on campus. Take a group, a friend, your family or book club to an event, or gift your favorite teacher with tickets to his or her favorite show. The Pascal Center for Performing Arts is a cultural gem with something for everyone.

So go on and get creative. Put down the sweaters, neckties and fruitcakes and remember what the Grinch learned: "Christmas day will always be just as long as we have we." ■



Local Small Businesses Offering

By Mark Patton
mark@severnaparkvoice.com



Worried about finding that perfect gift for everybody on your list? Local small businesses are aiming to ensure that you spend more time humming holiday songs and less time feeling like a stressed-out scrooge this season. Here's a sampling of offerings from local shops.

Benfield Gallery

Benfield Gallery in Severna Park is hoping to help you find that perfect gift. The store's holiday show will be opening on Small Business Saturday, which is on November 26. Gallery staff said its walls will be adorned with wonderful art from the local artists they represent, such as Kathy Daywalt. In addition to showing fine art in a variety of styles and mediums, Benfield Gallery has pottery, handcrafted metalwork, fine crafts and quality giclee prints. The store will have an open house with refreshments each Saturday from noon to 5:00pm until Christmas Eve. Need a print framed for a holiday gift? They have you covered there as well. *Benfield Gallery is located at 485 Jumpers Hole Road.*



Severna Park's Benfield Gallery offers pottery, metal art, fine crafts and quality giclee prints.

Bryki Gallery

Bryki Gallery has a wide variety of high-quality, personally curated crystals and crystal home decor to help you give memorable, meaningful gifts this holiday season. Everything from small pocket crystals, crystal jewelry and meditation palm stones, to crystal lamps, sculptures and home decor. Store staff said crystal lamps make a perfect gift with their combination of beauty and ability to enhance any space. The warm glow and supportive energy of a crystal lamp can be a wonderful addition to any home, office or commercial space. Gifting a crystal lamp is sending a message of thought, love, and care, while also giving the present of great energy. Bryki Gallery said its team members are ready to assist shoppers in finding the right fit for their gift-giving needs. *Bryki Gallery is located at 741 Generals Highway, Suite 107, in Millersville.*



Bryki Gallery has a variety of high-quality, personally curated crystals and crystal home decor to help you give memorable, meaningful gifts this holiday season.

Bulldog Schwinn and Sports

Bulldog Schwinn and Sports is a Severna Park store that carries a variety of gifts for the adventurer in your life. Besides bikes, Bulldog also features kayaks, stand-up paddleboards, and accessories to keep you and your equipment ready to go. Bulldog Schwinn and Sports not only sells, but the store offers rentals and repairs. Worried about fitting a kayak into your vehicle? Bulldog Schwinn and Sports takes the stress away by offering free delivery on purchases of kayaks, paddleboards and bicycles. With so much water surrounding the area, it's no surprise that Bulldog expects kayaks and stand-up paddleboards



Besides bikes, Bulldog also features kayaks, stand-up paddleboards, and accessories to keep you and your equipment ready to go.

to bring the "wow" factor under the tree this year. *Bulldog Schwinn and Sports is located at 405 Ritchie Highway.*

Gifts For Your List

Park Books

Park Books & LitCoLab in Severna Park offers a warm and welcoming environment to search for gifts. The Park Books team said they're ready to help all readers grow whether young, old, an avid reader or somebody trying to get back into turning pages for fun. Park Books also offers cards, unique puzzles, candles, and an assortment of other gifts that are sure to bring a smile to the recipient. Whether it's helping you pair the perfect read with an accompanying candle for a gift bundle or picking out the latest holiday reads for kids, such as "There Is An Elf In Your Book," Park Books has something for everybody on your list. *Park Books is located at 555 Baltimore Annapolis Boulevard in Severna Park.*



Park Books' Indie Next wall is full of newly released books recommended by independent bookstores. There is a little something for everyone on this shelf.

Side Street Framers & gift gallery

Located in Park Plaza on Ritchie Highway, Side Street Framers & gift gallery offers much more than their framing services. The store is filled with pottery, jewelry, handmade soaps and lotions, and more unique pieces. The store touts its commitment to supporting artisans in the U.S., and many of the shop's pieces are made in Maryland. This season, Side Street is highlighting some unique items. First are lifetime candles, which are decorative pieces filled with oil that can either be lit up from underneath or used as a candle with the included kit. There are also decorative glass Christmas trees and create-your-own gift baskets with winter drinks, ginger cookies, honey and more, or you can choose a basket that's already created for you. *Side Street Framers is located at 558 Ritchie Highway in Severna Park.*

Side Street Framers & gift gallery is offering lifetime candles for sale this season. The candles are decorative pieces filled with oil that can either be lit up from underneath or used as a candle with the included kit.

The Cottage

If you're looking for a shop to check out modern trends, vendors and a true boutique atmosphere, The Cottage, located at Park Plaza in Severna Park, fits the bill. It's a one-stop shop as you can find something for everybody at this location. The Cottage offers apparel, jewelry, unique gift items, and things for babies and kids. Whether it's handmade pottery from Mussels & More or uniquely themed gifts, The Cottage aims to provide service to find the ideal present for those on your list, young and old. *The Cottage is located at 562-B Ritchie Highway in Severna Park.*



The Cottage offers apparel, jewelry, unique gift items, and things for babies and kids.



Soaking Treasures

Soaking Treasures in Arnold specializes in making custom handmade bath products. Soaking Treasures makes a variety of bath bombs, candles, bath salts, bubble baths and more. The shop has three holiday gift sets available. Customers can choose from the Ultimate 12 days of Christmas Bath Box, Holiday Mystery Box, or a Paint Your Own Bath Bomb Kit. Check out the store's website at www.soakingtreasures.com for shopping and details. You can also follow the store on Facebook and Instagram @SoakingTreasures for shop updates.



The Ultimate 12 Days of Christmas Bath Box is one holiday treat offered by Soaking Treasures for those on your list.



Tipsy Trends This Holiday Season

By Lauren Meyer

Every year, the alcohol beverage selection grows. It can be challenging to keep up and decide what's best, especially during the holiday season when there are enough decisions to make for shopping, parties, events and so on. Thankfully, three local liquor stores are here to help guide you down the right path to get you from Thanksgiving to New Year's.

Fishpaws Marketplace

If you're seeking advice regarding wine, beer and spirits pairings for holiday meals and seasonal parties, Fishpaws Marketplace owner Kim Lawson suggests patrons come in and speak to each respective specialist in those areas.

"We have an onsite beer manager, wine manager and gourmet cheese specialist," Lawson said.

After a chat with a Fishpaws specialist, you can peruse the many seasonal drink

options available including Devil's Backbone Cranberry Smash canned cocktails, Peppermint Twist Smirnoff, Jack Daniels Winter Jack Tennessee Cider and Rum-Chata Peppermint Bark. Glühwein is also available for those who want the warming taste of mulled wine without having to travel to the famed Christmas markets in Germany.

Of course, the holiday staple of egg-nog is in bountiful supply with Annapolis-based Irish restaurant Galway Bay's variation that might just have you asking, "Where's my 'Christmas Vacation' moose mug?" Undoubtedly, the Hallmark channel holiday-themed red and white wines will make for a perfect holiday movie marathon pairing.

Some upcoming Fishpaws events to mark on your calendar:

- **All store bottle etching:** November 25 and December 17 from noon to 6:00pm. Debra Healy, a calligrapher, will engrave any wine or spirit. This

is an opportunity for a one-of-a-kind gift. If you can't make either event date, you can preorder a bottle by speaking to a Fishpaws manager.

- **Beam Suntory tasting and bottle etching:** featuring Jim Beam, Maker's Mark, Basil Hayden, and Laphroaig and Cruzan. December 3 from noon to 3:00pm.
- **Brown-Forman tasting and bottle engraving:** December 19 from 4:00pm to 7:00pm. Place a personalized message on any Jack Daniels single barrel, Gentleman Jack or Woodford Reserve bottle.

Magothy Wine & Spirits

Looking for a safe wine choice, be it for a hostess gift, party or formal dinner? Peter Rutski, manager at Magothy Wine & Spirits, says Pinot Noir is best.

"California is juicy and forward, and not too tannic," Rutski said.

He shared how Oregon's Pinot Noir is

GRAB DINNER and a HOLIDAY GIFT!



Severna Park
511 Ritchie Hwy • Severna Park, MD 21146

Chick-fil-A® and Chick-fil-A Stylized® are registered trademarks of CFA Properties, Inc.

VCA CALVERT VETERINARY CENTER "Your Other Family Doctor"



Fully open with in-person appointments.

NEW PATIENTS BEING ACCEPTED

- 🐾 Ultrasound
- 🐾 In-house laboratory
- 🐾 Laser surgery
- 🐾 Exotic pets
- 🐾 Digital X-ray
- 🐾 Therapy laser
- 🐾 Pharmacy on-site



**December 8th
from 6-8pm**

**Join us for hot
cocoa and pet
photos with Santa!**

There will be local vendors and pet trainers and we will be accepting charitable donations for two area rescue groups.

4100 Mountain Road | Pasadena, MD 21122 | 410-360-PAWS (7297)
(across from Lake Shore Plaza)

Hours of Operation: Monday-Friday, 7:30a.m. - 7:30p.m. | Saturday, 8:00a.m. - 1:00p.m.

Check out our website today! vcahospitals.com/calvert

another top selection. Rutski noted that it costs a bit more, but customers should be happy with the choice.

Rutski also shared how brown spir- its, whiskey-based cocktails, prove popular during the holiday season. For that, Baltimore Spirits Company is what he recommends as the com- pany makes its “own juice” – distilling spirits in-house.

Corwell & Son Liquors

Ron Corwell Jr., owner of Corwell & Son Liquors, has noticed a common trend these days, and he doesn't expect it to let down during the holiday season. What he's referring to are RTD beverages — known as “ready to drink” with popular brands such as High Noon and White Claw.

“It's the hottest growing drink with new ones coming out pretty much daily,” Corwell said.

In addition to seasonal RTDs, Cor- well expects some of the newer craft beers he carries, like chocolate pretzel or salted caramel and coffee flavored, to be popular this holiday season as

well. If beer's not your thing, there's plenty of bourbon-flavored options available to include barbeque, peanut butter and s'mores offerings.

When Corwell received a limit- ed edition of an eggnog made by the waffle brand Eggo, he sold out quickly. Eggo Nog's bottle is wrapped like a waffle. Corwell hopes to get more in soon. He's clearly not alone in this hope.

Another recent popular item? Cookie dough whiskey. Corwell does frequent sales, so his customers can try out new and surprising drinks that they'll fall in love with.

One thing is for sure. According to Corwell, champagne is out.

“I used to go through 15 to 25 cases between Christmas and New Year's,” said Corwell about his champagne stock. “The traditional champagne toast is done less and less. People are toasting whatever is in their hand.”

Whatever you choose to toast with this holiday season, may your cup bring joy. Cheers! ■



SEVERNA PARK
TAPHOUSE
BAR & GRILL

Santa is coming to the
Severna Park TapHouse

Cookies with Santa

Sunday, Dec 11th at 11am

Call to reserve
your seat

410-793-5759

GIFT CERTIFICATES
AVAILABLE



To-Go Platters
Heated Indoor & Outdoor Dining

58 W. Earleigh Heights Road, Severna Park, MD 21146

410-793-5759

www.smashinggrapes.com



smashing
grapes
— KITCHEN + WINE BAR —



Annapolis



Gambrills

Join us for
brunch,
lunch or
dinner —
book your
reservation
today.

Annapolis: 177 Jennifer Road, Annapolis, MD 21401 | (410) 266-7474
Gambrills: 2383 Brandermill Blvd, Gambrills, MD 21054 | (410) 451-7544

Lighten Up

The Voice's Annual Holiday Contest Is Back

The holiday season transforms many homes into winter wonderlands adorned with seasonal décor. To honor the homeowners who deck out their homes for their community to enjoy, the Severna Park Voice introduced the inaugural holiday lights contest last year. Voters chose Jim and Jeanine Malena, owners of a home on Rustling Oaks Drive, as the inaugural contest winners.

Help us choose the 2022 winner, who will receive a \$100 gift card to Severna Park Taphouse. How will it work? The contest will take place over two rounds. During the first round, we encourage anyone to send us one or more photos of their holiday lights display and home address. We will share the photos online and the top five vote-getters will advance to round two. Following another round of votes, the winner will be announced on our website and social media pages.

Send photos and details to spvnews@severnaparkvoice.com. Each entry must be for a home in Severna Park, Arnold or Millersville. The deadline for entries is December 6.

Happy holidays. We can't wait to see photos of your favorite lights around town. ■



Kick off the Holiday at our Advent Market

November 26 From 11am to 4pm

Over 40 crafters & artisans plus so much more!



Visit Santa



Live Nativity
6:15-7:30pm



Wreath Making



Great Gifts by
Local Crafters

- † Visit with Santa
- † Food Trucks
- † Carolers
- † Free Petting Zoo
- † Fun for the whole family!

Check out the full list of vendors on our website!



St. John
the Evangelist
Roman Catholic Church

689 Ritchie Hwy
Severna Park
www.stjohnsp.org



Free Pony Rides

Have The Most Wonderful Meal Of The Year

By Sharon Mager

It's beginning to look like that time of year for holiday parties, and local restaurants can make your holiday entertaining easier. Whether you want to schedule your event in the restaurant, your home, office, or other location, these restaurants are ready to serve a variety of options — it's whatever rings your jingle bells.

Here are just a few samples of what's offered in and around the area.

Cafe Mezzanotte

Long considered one of the premiere romantic restaurants in the area, Cafe Mezzanotte also gets an added high-five for using local, organic ingredients for its in-house dining, banquets and catering.

The restaurant has an extensive catering menu offering everything from hors d'oeuvre parties to buffet or plated events. Asked about some of the most requested dishes, Michael "Mikey" Reigle, Cafe Mezzanotte's director of catering, said that customers love the restaurant's "grazing station" with cured meats, imported cheeses, marinated veggies and more. Another top selection is the 90-mile meatballs, a dish where all the ingredients come from within 90 miles of the restaurant.

Cafe Mezzanotte is located at 760 Ritchie Highway in Severna Park and can be reached at 410-647-1100. Its online menu is available at www.cafemezzanotte.com.

Chick-fil-A

Chick-fil-A is a good pick that most will love, especially families with kids. Choose from salads, wraps, chicken nuggets, strips and tenders, and more. The bundle package allows everyone to build their own sandwich with grilled chicken breasts, multigrain brioche buns, honey-roasted barbecue sauce, lettuce, tomatoes, colby jack cheese, and bacon. It's \$77 and serves 10 people, so you get a great taste at a bargain price. Also, don't forget the macaroni and cheese, fresh fruit, and cookie and brownie trays.

Chick-fil-A is located at 511 Ritchie Highway in Severna Park. To see the full menu, go to www.order.chick-fil-a.com/get-started/catering.

Severna Park Taphouse

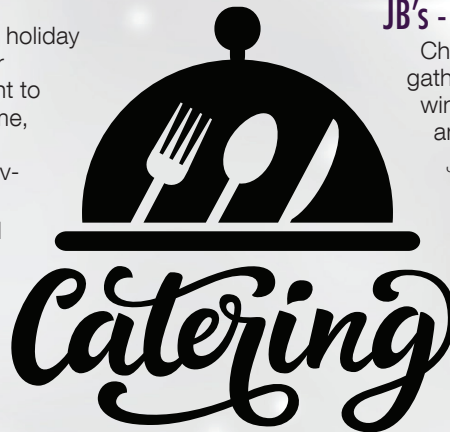
Grab some party platters from the Severna Park Taphouse for a more relaxed holiday vibe. Pick up some jumbo wings with homemade ranch or blue cheese dressing. Maybe you prefer the "Triple Play Platter" with wings, crab balls, and steamed shrimp or the buffalo chicken dip tray with toasted crostini. Each platter serves approximately 20 guests. For pricing and additional information, email severnaparktaphouse@comcast.net.

Severna Park Taphouse is located at 58 West Earleigh Heights Road in Severna Park and can be reached at 410-793-5759.

The Social

The Social is the new kid in town. Although the restaurant is not set up for catering yet, it is a great spot for special holiday meals. Takeout and delivery are available. The Social has a variety of food that will tickle your taste buds - maple bourbon deviled eggs, grilled flatbreads, crispy Brussels sprouts, shrimp and grits, rockfish, pasta primavera, plus sandwiches, salads and scrumptious desserts.

The Social is located at 139 Ritchie Highway, Suite A, in Severna Park. To see the full menu or learn more, visit www.thesocialsp.com or call 410-544-2457.



JB's - Severna Park

Check out JB's for a comfy and easy holiday gathering. There's plenty of food to pick from — wings, pizzas, burgers, sandwiches, salads, sides and even desserts.

JB's is located at 566 Governor Ritchie Highway in Severna Park and can be reached at 443-906-2211. More information can be found at www.jbs-sp.com.

Garry's Grill

Garry's Grill is another Severna Park favorite. You can keep your planning simple with a fruit and cheese display with various kinds of offerings served with assorted crackers. You can also pick

the crab fondue, smoked salmon, mini crab cakes and chilled tenderloin. There are entree salads, sandwiches and pasta — an extensive menu.

Dan Hansen, a front house manager at Garry's Grill, said sesame chicken, tenderloin, and Chesapeake pasta are customer favorites.

Order by December 18 for a December 23 pickup. Garry's Grill is located at 553 Baltimore Annapolis Boulevard in Severna Park and can be reached at 410-544-0499. More information is available at www.garrysgrill.com/catering/#catering-menu.

Titan Catering Services: Blackwall Hitch, Blackwall Barn & Lodge, Smashing Grapes

Titan Catering offers some yummy holiday specials, including "The Hungry Holiday Bundle," which features a salad, soups, a display platter — such as charcuterie, fruit, cheese, or crudites — and a variety of several delicious appetizers. Or go for a "Holly Jolly Feast" with all the above, plus entrees and sides.

Of course, those are just a few options. You can also pick from sandwich platters, flatbreads, salads, chilled and hot appetizers, soups, pasta and desserts.

Browse the options online at www.titancatering.com. Titan Catering can be reached at 410-317-2276.

Founders Tavern & Grille

Founders Tavern & Grille doesn't offer catering yet, but the staff promised that it's coming for winter 2023. However, Founders hosts many holiday luncheons and dinners for up to 35 people. The staff also provides lunch carryout for local businesses.

The staff said customers especially love the Yankee pot roast and fried chicken. Other favorites are their shrimp and grits, pizzas and burgers.

Founders is located at 8125 Ritchie Highway in Severna Park and can be reached at 410-544-0076. More information can be found at www.founderstavernandgrille.com.

This is just a sampling of the fabulous food in and around Severna Park. There are plenty of other restaurants in the area, of course — but this should get you thinking. Plan now and order as soon as possible. ■



Founders is in the Holiday Spirits!

Modern American Tavern Fare

Always Fresh ~ Scratch Kitchen ~ Holiday Cocktails ~ Craft Cocktails ~ Bourbon Bar



CHRISTMAS
GIFT CARD
GIVEBACK

One of the top bourbon
bars in our area!

Cheers!

Buy a \$100 Gift Card and get a
\$20 Gift Card back for yourself.
Now thru Christmas Eve!



Start a tradition with
**FOUNDERS'
YANKEE
POT ROAST**
Recipe in this guide.



FOUNDERS™

TAVERN & GRILLE

Good Friends, Great Food & the Pursuit of Happiness

8125 Ritchie Highway, Pasadena, MD 21122 • 410-544-0076
founderstavernandgrille.com

Join us on Facebook and Instagram for specials & events!





Weboshe

Elevation Through Fashion Expression



- Handmade in the USA
- Slow fashion
- Variety of sizes
- The place in Severna Park to elevate your closet!



Follow us on Instagram and Facebook for our latest inventory and sales!

www.weboshe.com 410.505.0641



CAFE MEZZANOTTE



760 Ritchie Hwy, Severna Park MD 21146
410-647-1100 FB @therealCafeMezz IG @cafemezzanotte

WWW.CAFEMEZZ.COM



HOLIDAY CATERING *In our of our private banquet rooms, or let us come to you*
NEW MENUS *fall/winter menus now available... new food, drink and brunch options*
BEST OF *grazie for voting us best restaurant, dinner, Italian and special occasion*

Give the gift of LIVE theatre!

2023 SEASON SUBSCRIPTIONS & GIFT CERTIFICATES MAKE GREAT HOLIDAY GIFTS!



SUBSCRIPTION QUANTITIES ARE LIMITED!
ON SALE THROUGH DECEMBER 31, 2022, WHILE SUPPLIES LAST.



Visit... TOBYSDINNERTHEATRE.COM or Call... 410-730-8311



NOW ON STAGE

Meaningful Ways To Give Back This Holiday Season

By Lauren Meyer

Want to make an impactful contribution to anyone struggling this holiday season? Charitable organizations have holiday programs for those looking to sponsor or donate. Serving People Across Neighborhoods (SPAN) and Giving Back, Linda's Legacy (GBLL) are two of those groups.

SPAN

One of the biggest projects for SPAN is finding sponsors for its Holiday Caring program.

"Each year, SPAN matches low-income families with sponsors who provide holiday food baskets and/or Christmas gifts for children 18 and under," explained Maia Grabau, director of operations at SPAN.

Last year, SPAN was able to provide Christmas gifts for about 350 children in addition to dinner baskets for their families and the community's elderly population.

Get involved in the Holiday Caring program by filling out an online form. Email spanhelps@yahoo.com to receive the link.

Don't have time to shop? SPAN also accepts gift cards in lieu of dinner baskets or children's gifts. Recommended gift cards include grocery and toy stores. SPAN encourages holiday gift cards for children or teens in denominations of \$50 each.

All donations for the Christmas Holiday Caring program should be delivered to the SPAN headquarters by December 11 between 1:00pm and 4:00pm. The group's headquarters is in Severna Park behind Our Shepherd Lutheran Church at 400 Benfield Road.

One simple way to contribute to SPAN's efforts is to donate items to one of its bins, located at the Severna Park Library or the Severna Park Community Center. SPAN also welcomes in-person donations at its headquarters Mondays to Thursdays, or any time in the plastic bin behind their building.

Some of the most in-demand items include toiletries, laundry detergent and dish soap. Other items that are coveted include food such as jelly, syrup, instant or canned potatoes, noodles and other boxed goods.

Michele Sabeau, director of development at SPAN, shared how the nonprofit gets numerous requests for toiletries and things like laundry detergent.

"I have had people comment that they were watering down their shampoo to make it last longer or that it had been a long time since they had been able to wash their hair," Sabeau said. "Those type of comments stick with me and keep things in perspective when I am shopping for my shampoo."

Sabeau noted that although everyday essentials are vital for the recipients of the program, it's sometimes other items that also bring smiles.

Want to help SPAN further? Donations to support SPAN's programs are accepted by sending a check to the following address: SPAN, Inc., P.O. Box 626, Severna Park, MD 21146.

GBLL

GBLL has handed out warm winter clothes to the needy in Anne Arundel County, Baltimore County, the city of Baltimore and Washington, D.C. for more than 40 years.

"The need is great, and your support is essential during these difficult times," said Jeanette Sudano, executive director of GBLL.

GBLL is gearing up for another holiday season of providing essentials to those experiencing homelessness or struggling with its Sponsor a Backpack program.

The signature item provided in the program is a backpack filled with unworn winter clothes including a hat, gloves, socks, long underwear and a sweatshirt. A homemade card from a local school student accompanies the items. A donation of \$25 to the Sponsor a Backpack program can provide one backpack to an individual living on the streets.

In 2020, GBLL delivered more than 2,500 backpacks on Christmas Eve. Last year, GBLL grew its efforts and delivered 3,000 backpacks filled with new warm clothing as part of the more than 22 truckloads of necessities on Christmas Eve.

GBLL will host a toiletry sorting and packing event at The Church of Latter-Day Saints in Annapolis on December 10 with hopes to put one toiletry kit in every backpack. Items most requested include travel sizes of soap, shampoo, deodorant, toothbrushes, toothpaste, combs, lip balm, lotion and women's sanitary products.

Phronesis Wealth Management has also volunteered its office as a collection space for toiletry items until December 16. Other items such as clothing, coats, hats, gloves, sleeping bags, blankets and baby items can also be deposited there. That office is located at 529 Benfield Road in Severna Park, and the business is accepting donations weekdays from 8:00am to 4:00pm.

In addition to items noted above, other in-demand items are men's clothing like jeans, belts or long-sleeve shirts. Baby items such as disposable diapers, formula, toys, linens, blankets and nonperishable food are also

beneficial.

GBLL's main operations will take place at The Church of Latter-Day Saints in Ellicott City from December 19 to December 23, where many volunteers are needed daily to sort, organize and pack the trucks. Volunteers are also needed for morning and evening deliveries that will take place on December 24.

Email Sudano at jeanette.middleton@comcast.net to sign up as a donation site or volunteer for efforts.

GBLL is run solely by volunteers and is funded almost entirely by local citizens.

To donate to GBLL's efforts, visit www.homelessdrive.org/donate.



ACAN

Asbury Church Assistance Network (ACAN) is a nonprofit organization in Severna Park that provides healthy food choices and reduces food insecurity in the communities it serves. Each year, ACAN does a Thanksgiving dinner giveaway, providing families with turkey, chicken, the fixin's, water and more. ACAN also helps families during the Christmas season. To learn about items needed or to volunteer, contact ACAN at 410-647-7667 or visit www.acansevernapark.org.

Arundel Federal Savings Bank

Each year, Arundel Federal Savings Bank has donation boxes in the lobby of each of its locations to collect toys for the holidays. This year's toy drive began November 3 and runs through December 2. The Severna Park branch is located at 50 West McKinsey Road. For more information, call 410-544-9600.

A Call For Coats

Admiral Cleaners is collecting seldom used and outgrown coats to warm up winter for people in need. Bring unwanted coats to any Admiral Cleaners location before November 30. For more information, call 410-267-8381. ■

Fence & Deck Connection Invites You To Give Back During The Holidays



Families will be able to receive a free photo with Santa during Fence & Deck Connection's 16th annual holiday drive, Santa Under the Stars, on December 3 at 8057 Veterans Highway in Millersville.

“

Since day one, the Fence & Deck team has maintained the philosophy of giving back to the communities and customers they serve. The satisfaction of giving back to the local community that has supported the business is a tremendous feeling, and the employees consistently encourage and promote new ways in which they can help locals in need.”

For more than 30 years, Fence & Deck Connection has installed fences, decks and screened porches in Anne Arundel County. Helping homeowners achieve their backyard goals may be the business' most obvious priority, but helping people has, and will continue to be, a significant cornerstone of the company.

Since day one, the Fence & Deck team has maintained the philosophy of giving back to the communities and customers they serve. The satisfaction of giving back to the local community that has supported the business is a tremendous feeling, and the employees consistently encourage and promote new ways in which they can help locals in need.

As we enter the season of giving, Fence & Deck is excited to announce its 16th annual holiday drive, Santa Under the Stars, which will be held December 3 from 4:00pm-7:00pm at the Millersville location (8057 Veterans Highway in Millersville).

This joyous holiday event directly benefits the Blue Ribbon Project, an Annapolis-based organization offering several programs directly serving children who are the victims of child abuse and neglect as well as adult survivors of child abuse.

Admission to the holiday drive is free, although Fence & Deck will collect new children's toys and clothing items (sizes for newborns through age 18) at the entrance. Donations are highly recommended and will directly support local children in need during the holiday season.

This beloved community event offers a great way to kick off the first weekend of December and get in the holiday spirit.

All attendees will be able to receive a free photo with Santa. Additionally, there will be free sweet treats and hot cocoa from T & J Waffles, a food truck and carryout storefront specializing in homemade waffles and clips of holiday film classics by cozy bonfires. Guests can also take part in a large outdoor skating rink and will go home with cookie decorating kits, crafts and fun giveaways.

In addition to working with organizations such as Warrior Events, the Anne Arundel County Food Bank, Anne Arundel County SPCA, and many local spots and church groups over the years, Fence & Deck Connection has been proud to closely partner with The Blue Ribbon Project for the past decade. Both the Annapolis and Millersville locations are drop-off sites for the organization's Backpacks of Love program, targeted toward children of all ages entering the foster care system. Donated backpacks each include a toothbrush, toothpaste, hairbrush, children's soap/body wash, children's shampoo, changes of clothing for the child's age, personal clothing (underwear, socks, pajamas), and age-appropriate books and toys. To donate a filled backpack, visit Fence & Deck Connection at 1544 Whitehall Road in Annapolis or at 8057 Veterans Highway in Millersville.

Beat the spring rush and contact Fence & Deck Connection at 410-757-5511 to learn more about its many fence and deck options customizable to your needs. ■

**Let Us Do The
Decorating For You!**

Trustworthy mother daughter team
with great attention to detail.

Decorating Services Available

Insured
& Bonded



**Bayside
Cleaning Co.**

www.baysidecleaningcompany.com

443-924-1889

"Let us clean today for a better tomorrow"



Join Us for Our 16th Annual Holiday Clothing & Toy Drive

Santa UNDER THE STARS



SATURDAY DECEMBER 3, 2022

4:00PM - 7:00PM



8057 Veterans Hwy, Millersville, MD 21108

BRING A DONATION & ENJOY FREE FAMILY FUN!

- ✓ **FREE Photo with Santa!**
- ✓ **Outdoor Ice Skating Rink**
- ✓ **Cookie Decorating**
- ✓ **Holiday Crafts**
- ✓ **Hot Chocolate**
- ✓ **Sweet Treats**

Please visit our website for full details: www.FenceAndDeckConnection.com or call 410-757-5511 for more information.

This Event Directly Benefits THE BLUE RIBBON PROJECT
& Their Programs That Support Victims of Child Abuse & Local Youth in Foster Care.
We are Collecting Both New-with-Tags Children's Clothing and Toys.

DONATION NEEDS: New Children's Clothing
Clothing, Pajamas, Socks, Underwear & Backpacks
Most Immediate Need: Infant Sizes 3 Months - 3T Onesies & Outfits

Give The Gift Everyone Wants!

from

Harbour Wine & Spirits

527 Benfield Road, Severna Park

410-544-6377

www.harbourspirits.com

and

PORT TACK LTD WINE & SPIRITS

1246 Bay Dale Drive, Arnold

410-974-0800

www.porttackltd.com



Shop Local This Holiday!

Spoil Your Loved One With Monthly Service

Hours of Operation: Monday - Saturday 8:00 am to 5:00 pm
Sunday 9:00 am to 4:00 pm
825 Ritchie Highway, Severna Park, MD **410-544-9009**

Fill Your Space With Clear, Uplifting Energy



The holiday season can be uplifting, but it can also be a time of stress and clutter. Anytime you feel the need for an energetic oasis, refer to this Bryki Gallery recipe, curated by Crystals & Home Décor.

We Wish You a Merry Christmas! Open House

Wednesday, December 7th from 2 to 4 pm
Half day and extended day programs for children ages 3 and 4

Limited seats available in January for the rest of this school year, for children who turned three or four by September 1, 2022.

Online registration opens January 4th for the 2023-2024 school year.

www.severnaparkumc.org/nursery-school



SEVERNA PARK UMC
NURSERY SCHOOL

Severna Park United Methodist Church Nursery School

731 Benfield Rd, Severna Park, Md • 410-987-8339 • spumcns@gmail.com
MSDE Certificate of Approval #3710



Prep time varies depending on where ingredients are sourced.

Ingredients

- ~ Banded calcite lamp
- ~ Selenite sculpture
- ~ Ocean jasper sphere
- ~ Amethyst geode slice
- ~ Rose quartz lamp

Directions

- ~ Place the ingredients in your home or office where you feel they are needed.
- ~ The banded calcite is both uplifting and grounding – place where it’s gorgeous, glowing warmth can best be appreciated.
- ~ Amethyst calms a racing mind and would do well in a bedroom or office.
- ~ The selenite clears your space of any heavy or negative energy - place near somewhere that sees a lot of use, such as a living room or an entryway.
- ~ The ocean jasper infuses positivity and stability into your space. It would do well anywhere in the home.
- ~ And last but certainly not least, the rose quartz bathes it all in the glow of love and compassion. The rose quartz would also do well in any space, but Bryki Gallery suggests placing it wherever you know the heart of the home is.

These are just a few recommendations to help create an energetic oasis within your space, but like with any recipe, feel free to adjust to match your taste!

For more info or other ideas, visit www.brykigallery.com. ■

YOUR PREMIER DESTINATION FOR ALL THINGS CRYSTALS!

BRYKI GALLERY

Curated Crystals + Decor

741 Generals Highway, Suite 107, Millersville, MD 21108
410.570.8982 www.brykigallery.com



AFTER HOURS AT THE GALLERY

Enhance Your Home with Crystals Event!
Integrating the beauty & energy of crystals into your space.

12.6.22 / 7pm

Reserve your spot now at brykigallery.com!
Private shopping & learning event. Limited seats available!

\$46

Ticket price will
count towards any
purchase the night
of the event!

Holiday Recipes

Yankee Pot Roast

*Recipe from Founders
Tavern & Grille*



Ingredients

- ~ Chuck roast, 4-5 pounds
- ~ 2 cups crushed tomatoes (can)
- ~ 1 cup water
- ~ 2 large yellow onions, large dice
- ~ 4 large carrots, large slice
- ~ 2 stalks celery, large dice
- ~ 2 sprigs fresh rosemary
- ~ 4 sprigs fresh thyme
- ~ 2 bay leaves
- ~ ½ tsp kosher salt
- ~ ½ tsp black pepper
- ~ 2 tbsp extra virgin olive oil
- ~ Jus from pot roast, natural juices save

Pot: Large Dutch oven with lid, or large pan with foil

Directions

Preheat the oven to 325 degrees. Salt and pepper roast all over. Heat olive oil over moderately high heat in a large Dutch oven or pan, add the roast and brown on all sides for four to five minutes. Then in the same pot, pour in one cup of water and the two cups of crushed tomatoes. Add all the veggies and herbs around and over the meat. Remove from heat. Cover with lid, roast in the oven for three to three and a half hours or until tender with a fork, basting periodically with pan juices. Slice or cut roast into chunks, arrange portions on a plate surrounded by the vegetables, serve over your favorite mashed potatoes and pour the remaining au jus left in the pot over top.

***Note:** If there isn't enough au jus from the pot roast, prepare some au jus using the beef base and hot water.

This is sure to become a family favorite holiday tradition just like ours. Enjoy. Happy holidays!

Chesapeake Pasta

Recipe from Titan Catering



Ingredients

Lobster Sauce

- ~ 1 tsp butter
- ~ 1 clove garlic
- ~ 1 tsp all-purpose flour
- ~ ½ cup heavy cream

Other Ingredients

- ~ 4 oz tagliatelle
- ~ 3 oz shrimp (16-20 count)
- ~ 1 oz Parmesan
- ~ 1 oz basil
- ~ 2 oz crab meat
- ~ 2 stalks asparagus
- ~ 2 oz heirloom tomatoes

Directions

Add butter and garlic to a sauce pot on medium heat. Add flour after one minute. Stir roux on low heat for five minutes. Add stock and simmer until thickened. Add cream, boil and remove from heat.

Drop pasta into heavily salted water.

In a sauté pan over medium heat and add shrimp, asparagus and heirloom tomatoes. Toss gently for two minutes. Add lobster cream and simmer. Add pasta al dente. Add parmesan and crab and toss to coat. Plate and finish with basil.

The Yule Mule

Recipe from Park Tavern

Ingredients

- ~ 1.5 oz Tito's Vodka
- ~ ½ oz pomegranate liqueur
- ~ 1.5 oz cranberry juice
- ~ 3.5 oz ginger beer

Garnished with cranberries and fresh lime.



Cook, bake and mix drinks like the pros this holiday season by trying these seasonal recipes.

The Bee's Harvest

Recipe from The Social



Ingredients

- ~ 2 oz Barr Hill gin
- ~ 1 oz cranberry
- ~ sage honey
- ~ ¾ lemon juice

Directions

Shake with ice and serve over ice with candied cranberries and lemon wheel.

Roasted Bourbonzola Brussels Sprouts

Recipe from Rams Head

Ingredients

- ~ 3 cups baby Brussels sprouts
- ~ 2 cups heavy cream
- ~ 2 tbsp bourbon (*your choice*)
- ~ ½ cup gorgonzola cheese
- ~ 1 tsp black pepper
- ~ 2 tbsp olive oil
- ~ 6 strips bacon
- ~ 2 tsp salt
- ~ 2 tbsp flour
- ~ 1 tbsp garlic

Directions

Fill a medium sauce pot with water and bring to a boil (one quart of water). Cut Brussels sprouts in half, place in water for approximately four minutes until tender. Drain using a strainer and shake excess water. Set sprouts aside.

In a separate large saucepan, add olive oil and set at medium-high heat. Cut bacon into half-inch dice and add to the pan. Cook until almost crispy and then add bourbon. Cook bourbon for approximately one minute and then add flour to the bacon, bacon fat and bourbon. Mix thoroughly to create a roux then add heavy cream. Bring heavy cream to a boil then turn heat to simmer. Set one tablespoon of gorgonzola aside for garnish. Whisk remaining gorgonzola cheese, garlic, salt and pepper until smooth in texture.

Set oven to broil or air fryer to 400 degrees. Cook sprouts on a sheet pan or in an air fryer for approximately two minutes and crispy. Add Brussels sprouts to the "bourbonzola" sauce and mix together until evenly coated.

Plate on a skillet or in your favorite casserole dish for the center of your holiday table. Garnish with remaining gorgonzola cheese or add parsley or green onion for fresh color.

Created by executive chef Carlo Biondi, this dish has become a favorite at Rams Head Tavern over the years. The bourbon can be switched with brandy or cognac and the gorgonzola can be substituted with any cheese.



Jack Apple Cider Mule

Recipe from Severna Park Taphouse

Ingredients

- ~ 2 oz Jack Daniel's Tennessee Apple
- ~ 2 oz apple cider
- ~ 2 oz ginger beer
- ~ Squeeze of lime
- ~ Ice

Directions

Grab your favorite mule mug and add ice. Pour apple whiskey over ice. Add equal parts ginger beer and apple cider and stir. Add lime wedge to garnish. Sit by a warm fire and enjoy.

Brunch Turkey Skillet

Recipe from Severna Park Taphouse

Ingredients

- ~ 6 oz pre-cooked turkey, sliced thin
- ~ 4 oz turkey gravy
- ~ ½ red pepper diced
- ~ ½ tsp granulated garlic
- ~ ¼ tsp paprika
- ~ 3 tbsp oil
- ~ 1 egg
- ~ ½ sweet onion diced
- ~ 2 potatoes cubed
- ~ ½ tsp onion powder
- ~ Salt and pepper to taste
- ~ 1 tbsp butter

Directions

In a skillet, warm oil over medium heat. Sauté onions and peppers until soft, about 10 minutes. Cook potatoes until golden brown, about 20 minutes. Add sauteed onion and peppers, garlic, onion powder, paprika, salt, and pepper to potatoes and turn on low heat.

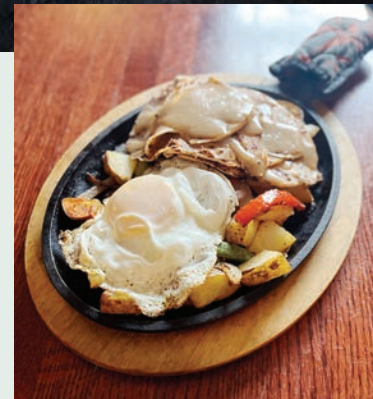
In a small pot, heat gravy over medium-low heat for three to four minutes until it begins to simmer. Stir and reduce to low heat.

Warm your pre-sliced turkey in a hot skillet for one to two minutes on each side. Preheat a clean non-stick pan to medium-low heat and brush butter around the pan.

Crack one egg into a cup. When butter stops foaming, add the egg to the pan and cook for one to two minutes, or until just the middle of the yoke is soft.

Assemble turkey and home fries, and top with gravy and egg on a hot skillet. Add salt and pepper to taste.

Don't forget the oven mitt. Your skillet will be sizzling. Enjoy.



RumChata Peppermint Bark Hot Chocolate

Recipe from Cheers Wine & Spirits

Ingredients

- ~ 1 oz Peppermint Bark RumChata
- ~ ½ oz Meletti Cioccolato Liqueur
- ~ 1 cup hot chocolate (pick your favorite)
- ~ 3 tbsp whipped cream
- ~ 1 tsp crushed candy canes

Directions

Make your favorite cup of hot chocolate. Add the RumChata and Meletti Liqueur to hot chocolate. Top with whip cream. Sprinkle crushed candy canes on top of whip cream. Sip and enjoy.



Soaking Treasures

Your One Stop Bubble Shop!

- Shop Local, Shop Small, Shop American
- Christmas themed bath box \$45!
- Monthly subscription boxes available, perfect for that hard to shop person
- We specialize in bath bombs, bath products and candles!

Scan Here To Check Out All Our Treasures Online!



443-694-2188 - Cari

Facebook.com/soakingtreasures Instagram Follow us on Instagram

www.soakingtreasures.ecwid.com



Unleash Your Excitement for the Holidays

Nov. 20th – Jan. 1st
5:00-10:00 pm

SANDY POINT STATE PARK / RT. 50 EXIT 32

Bring your family, friends, or pets to experience more than 60 holiday light displays.

Visit LightsOnTheBay.org to learn more about the fun events happening throughout this holiday season. Call 410-268-4388 for more information.

Share Your Experience:    #LightsOnTheBayMD

SPCA OF ANNE ARUNDEL COUNTY Lights on the Bay

LightsOnTheBay.org

Proceeds Benefit the SPCA of Anne Arundel County










LESLEY SAJAK





HOLIDAY TASTE AND SIP

December 6TH from 5:30-8:30 pm
Chartwell Golf and Country Club

Over 26 Vendors Offering Delicious Food Samples And Drinks
Holiday Entertainment
And Silent Auction

Brought to you by



Tickets at www.GSPACC.com



All Aboard! Holiday Train Gardens Offer Family Memories

At Homestead Gardens in Severna Park, the train garden is arranged differently each year and visitors can see the Lionel Express train cars navigate around villages with many recognizable landmarks.

By Mark Patton

mark@severnaparkvoice.com

Holiday train gardens are a tradition steeped in nostalgia for many families. This area offers plenty of options for those looking to marvel at model trains traveling through realistic villages of holiday cheer.

According to the Lutherville-based Fire Museum of Maryland, German immigrants are believed to be the first to set up Christmas gardens, which were religious based and in homes. In the mid-1800s, people started adding small wooden trains around the outside for children to push around. As train sets became electrified, they soon took their place in the gardens.

Captain Eugene Daly of Baltimore City's Engine Company 28 is believed to be the first in the area to set up a Christmas train garden, which he did during World War I.

Others soon took notice of Daly's initiative and more firehouses in the region built gardens of their own. Around 1939, the fervor dulled as the fire departments felt too much time was given to constructing the gardens and the crowds of admirers were impeding their fire-fighting operations.

Over time, the idea of holiday train gardens spread. They can now be viewed not only at some firehouses, but also at stores, outdoor areas and window displays. For those looking to explore holiday train gardens, there are plenty to choose from in the region.

Homestead Gardens

The Severna Park location of Homestead Gardens has been operating its train garden every holiday season since the store opened in 2010. This year is no exception as the display will be chugging along until Christmas Day.

Staff at Homestead Gardens put a high value on tradition, and they say the trains play a large part in the store's holiday experience.

Steph Stowell, who serves as the store's hardgoods manager and created this year's



holiday train garden at Homestead Gardens, said many families come year after year to enjoy the setup.

"For a lot of people, it's nostalgia," Stowell said.

The train garden is arranged differently each year at Homestead Gardens and visitors can see the Lionel Express train cars navigate around villages with many recognizable landmarks.

Whether it's the leg lamp and elementary school from "A Christmas Story" or scenes from "Harry Potter" and "Elf," or Mickey and Minnie Mouse for the littlest visitors, there's something for everybody.

"They're excited to recognize the characters," Stowell said about visitors to their display.

Stowell explained that for a lot of children, the train serves as a representation of Santa bringing presents.

"Kids love the train. It's magical," Stowell said.

Homestead Gardens in Severna Park is located at 522 Ritchie Highway.

Clayville Railroad Outdoor Train Garden

For those seeking to add a dash of seasonal weather to the experience, Clayville Railroad Outdoor Train Garden in Pasadena features about 450 feet of track spread across 1500 square feet of fenced-in property. The train gardens at Clayville are set in a landscape with live trees, plants and natural stones. The trains also go over a bridge constructed over a pond and run under a waterfall through a tunnel.

Although there isn't an admission fee for the train gardens, donations are encouraged. The donations each year go to assist Anne

Arundel County families who have a child in active cancer treatment. This year, a pair of local children were chosen to benefit.

Although the train garden is the main display, those who donate are provided either a free hot chocolate or hot cider and a s'mores pack to enjoy around the adjacent fire pits.

Setting up the display is no small chore as multiple weeks are spent getting everything just right. But for part owner and operator Steve Pinnix, it's worth it.

"From where we started to where we are now with attendance and operations is astonishing," Pinnix said. "Going off last year's numbers and with the expectations of 10 to 15 percent more people this year, we are estimating around 8,000 to 9,000 people will attend this year's event."

Clayville Railroad Outdoor Train Garden will be open each Thursday to Sunday in December, weather permitting, from 5:00pm to 9:00pm. The attraction is closed on Christmas Eve and Christmas Day.

Pinnix said new attractions are in store this year on select nights. A complete calendar of special events can be found on Clayville's Facebook page.

The train garden is located at 8269 Baltimore-Annapolis Boulevard.

Other Train Gardens

Although the list isn't complete, several other popular train gardens in the area include Marley Station Mall in Glen Burnie. The mall offers a train garden with many interactive elements through January 8. Cheers & Spirits in Arnold also has a display in its store for shoppers to enjoy this season.

Whether you're a holiday train garden veteran or a first-time attendee of a display, there's enjoyment to satisfy young and old. ■

Anne Arundel County Food Bank Sees Increased Food Needs This Holiday Season

Prices of goods and services nationwide have become higher because of inflation.

The average household is now spending \$311 more a month on groceries than prior to this period of growing inflation. With the current high costs of essentials, many families are struggling to put nutritious meals on the table and turning to the Anne Arundel County Food Bank and its network of more than 70 member agency food pantries for food assistance. On average, the Anne Arundel County Food Bank serves 38,400 people each month to meet the high demand for food in the area.

Getting holiday meals can be difficult for many families throughout Anne Arundel County — especially with rising food costs.

“We are seeing a 100 percent increase in requests for turkeys, hams and whole chickens,” said Leah Paley, CEO of the Anne Arundel County Food Bank. “Last year, we assisted 2,000 households. That number has doubled to over 4,000 requests already this year for November alone.”

While these requests are in addition to the regular distributions that the Anne Arundel County Food Bank provides throughout the county, these holiday-focused proteins ensure that local neighbors have nutritious, celebratory food to enjoy with family.



Above: A volunteer from Community United Methodist Church in Pasadena, one of Anne Arundel County Food Bank's more than 70 member agencies, packed food bags to distribute to people facing food insecurity. **Below:** Community members throughout Anne Arundel County are stopping by to drop off turkey, whole chicken, and ham donations to the Anne Arundel County Food Bank.



To date, the Anne Arundel County Food Bank has only enough resources to support half of these requests. And that is just for November. The Anne Arundel County Food Bank anticipates the same level of holiday requests for December as well.

Fortunately, there are many ways to help the Anne Arundel County Food Bank meet the needs of county residents. Three top ways to lend your support are:

1) Donate fresh or frozen turkeys, hams, and/or chickens: Drop off perishable food donations at the Anne Arundel County Food Bank warehouse at 120 Marbury Drive in Crownsville, Monday through Friday, from 9:00am until 3:00pm.

Please give your perishable donations directly to the warehouse team so they can refrigerate them upon arrival. For more information, visit www.aafoodbank.org/donate-food.

2) Make a donation: A gift of any size can make a huge difference for a neighbor in need this holiday season. Your donation helps them purchase food for healthy, joyful holiday meals. To learn more, visit www.aafoodbank.org/donate.

3) Host a food and funds drive: Bring together your workplace, community, or circle of friends to collect food and funds for the Anne Arundel County Food Bank. Find out how at www.aafoodbank.org/get-involved. ■

Toys For Tots Sets Up Shop

Each year, the U.S. Marine Corps Reserve Toys for Tots program collects new, unwrapped toys during October, November and December, and distributes those toys as Christmas gifts to children. During 2021, the Toys for Tots campaign collected 52,375 toys for 14,980 children.

While the 2022 drop-off

locations were still being finalized as of mid-November, three spots were shared with the *Severna Park Voice*. Check fortmeade-md.toysfortots.org for updates on other locations.

The 45 Baltimore area **Chick-fil-A** restaurants are asking for support this year. Anyone can order a toy online from the Amazon wish list set up for this event. Now through December 10, anyone who donates a toy through the wish list will receive a digital offer card



in the mail for a free chicken sandwich as a “thank you” for their generosity. Just email an order confirmation and include a mailing address to iscott@mdcfa.com. The wish list can be viewed at www.amzn.to/3vyns6.

A motorcycle toy parade will start at **American Legion Post 175**, located at 832 Man-

hattan Beach Road in Severna Park, on November 19. The parade will end at Bubba's 33 in Glen Burnie. Bring a toy or show off a decorated motorcycle for a chance to receive a prize. Registration starts at 9:30am. The event charge is \$10 along with a donation of one unwrapped gift.

Coldwell Banker Realty is accepting toys at 572-B Ritchie Highway now through December 16. Drop-off hours are Monday through Friday from 9:00am-4:00pm. ■



Get into the Holiday Spirit with **\$2 off**

Coupon Code: 80283
 Limit one discount per coupon. Not valid during Happy Hour, weekdays 2p-4p. Coupon reproductions will not be accepted. Valid at participating locations through December 31, 2022.

8100 VETERANS HIGHWAY • MILLERSVILLE, MD 21108

Merry Christmas!



- Bicycles
- Paddle Boards
- Lacrosse
- Kayaks
- Field Hockey
- Accessories

20% Off All Store Merchandise



Bulldog Schwinn & Sports

405 Ritchie Hwy, Severna Park, MD 21146

410-544-6453

www.bulldogschwinn.com



Introducing
 to the
Benfield Shopping Center

SEÑOR CHILE

CAFÉ
 MEXICAN FOOD

senorschile.com

410-431-3000

594 Benfield Road
 Severna Park, MD 21146



And
In Arnold

SEÑOR CHILE

CANTINA
 MEXICAN FOOD

www.toasttab.com/senor-chile-cantina

410-421-1010

1264 Bay Dale Drive
 Arnold, MD 21012

What A Tree-t: Homestead Gardens Setup Charms Shoppers



By Zach Sparks
 zach@severnarparkvoice.com

“Real-life Pinterest” — that’s how Homestead Gardens hardgoods manager Steph Stowell described the experience of shoppers admiring the tree display at the Severna Park store.

Homestead Gardens is currently filled with about 26 decorated trees, each with its own unique theme and its name printed on a disk.

“We have Old Bay, the Chesapeake and underwater,” Stowell said when rattling off the different themes. “But then we’ll have very traditional things like Santa, snowmen and penguins.”

Last year, Homestead Gardens added the Topsy Penguin, a “pub” located in the back of the store within Evelyn’s boutique. There, visitors will also find a chandelier tree and candy sweets tree.

“It has bourbon, funnel cakes, things like that,” Stowell said of the candy tree.

The sweets tree is one new addition this year. Also new for 2022 is a safari tree and one of the store’s two 12-foot creations, a blue tree called “Blue Skies At Night.” Most of the other trees are 9 feet tall.

Some of the displays are altered each year while others

are replaced.

“We’re engaging a lot of that not just on sales but on excitement and what people are talking about,” Stowell said.

With 200 to 300 ornaments adorning each tree, and plenty of extra fixings, the project is a labor of love.

“With every tree, we try to have some fabric element whether that’s mesh, a ribbon or both,” Stowell said. “We have what we call silks or stems — those are all the things that stick out. That’s all stuff that is seen in modern tree decorating.”

The process starts as early as February when a Homestead Gardens manager attends shows and conventions, as far away as Dallas and Atlanta, to see what new items manufacturers are offering. Team members pick themes by June, and a team of about 10 people gathers in early September to put it all together.

The trees are not for sale and Homestead Gardens does not send staff to decorate trees for homeowners. But the store does offer artificial trees for purchase.

Stowell hopes that many visitors can enjoy the display this year, have their Pinterest moment and ask questions like, “How did you do this?”

“The goal for us is not necessarily to just sell you what you need but to inspire you and give you ideas,” Stowell said. “If you come through here and don’t buy a thing but get an idea or get excited for the holidays, we have done our job.” ■



COMING SOON TO *RAMS HEAD* On Stage



11/25 The Sugarhill Gang



11/27 Thunder From Down Under



12/3 Dar Williams



12/9, 12/10, 12/11 Carbon Leaf



12/11 Pam Tillis



12/15 Lez Zeppelin



12/17 Comedian Pete Correale



12/21 Jonathan Butler



12/22-23 Pressing Strings & Friends

RAMSHEADONSTAGE.COM • (410) 268-4545 • 33 WEST STREET ANNAPOLIS

RAMS HEAD
PRESENTS

COMING SOON TO MARYLAND HALL

CONCERT
TICKETS MAKE
GREAT GIFTS!



12/1 Phil Vassar & Deana Carter



12/3 Chris Isaak



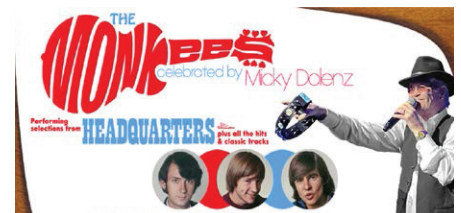
12/4 Debbie Gibson



1/20/23 The Sixties Show



2/13/23 Keb' Mo'



4/5/23 The Monkees Celebrated by
Micky Dolenz

RAMSHEADPRESENTS.COM • (410) 268-4545 • 801 CHASE STREET ANNAPOLIS

Holiday Events Worth the Drive

By Lauren Meyer

There's an overwhelming number of festive activities to consider throughout the holiday season. It can be difficult to decide what to prioritize. Here's a narrowed down list of four events that might be worth the extra drive.

MARYLAND ZOO LIGHTS

The Maryland Zoo offers Christmas light displays, which begin on November 18 and run through January 1. Visitors to the display can walk through a festival of lights shaped like wildlife and enjoy snacks and hot chocolate. Free train and carousel rides come with each ticket.

In a change for this year's festivities, the event has moved to Main Valley, which is the oldest section of the Maryland Zoo and formerly known as the Baltimore Zoo.

Shows mostly run Fridays through Sunday from 5:00pm–8:00pm with special event nights on Wednesday, November 23, and Thursday, December 22.

Kids under the age of 2 gain entry for free, and all other ticket sales are \$36. Zoo members save \$5. Visit www.marylandzoo.org/special_events/zoo-lights to learn more and buy tickets. Parking for the event is free.



Photo courtesy of Maryland Zoo Lights

Visitors to the Maryland Zoo Lights can walk through a festival of lights shaped like wildlife and enjoy snacks and hot chocolate.

ENCHANT

From November 25 to January 1, Nationals Park in Washington, D.C., is taken over by the magical event of Enchant.

Adventure begins in the Christmas lights maze. This year, visitors will stroll through lighted tunnels, find their

way to the 100-foot-tall Christmas tree, and look for stars and special surprises along the way. The maze is designed to dazzle the youngest of children to the oldest of adults.

A village of tiny shops featuring artisan vendors, specialty crafts and boutiques is also part of the attraction. Holiday treats and beverages are offered for those with a need to satisfy their sweet tooth.

After the maze and shopping, lace up your ice skates and glide through a dazzling forest of Christmas lights. Ice skating is a timed entry with an add-on ticket option and limited availability. Tickets are \$18 per person and ice skates are provided for free.

Tickets start at \$35 for adults and \$23 for children. A discount is available for military and senior citizens. Tickets can be purchased at www.enchantchristmas.com/washington-dc-nationals-park.

Photo courtesy of Enchant

From November 25 to January 1, Nationals Park in Washington, D.C., is taken over by the magical event of Enchant.



WINTERFEST OF LIGHTS

For the ambitious road-trippers, look no further than Ocean City's Winterfest of Lights. The display is at Northside Park, which is located at 200 125th Street.

This year's event will have an expanded walking tour that takes visitors through thousands of sparkling holiday lights and animated light displays. Guests can have their photo taken with Santa, sip hot chocolate and see the 50-foot Christmas tree.

Shows run from 5:30pm–9:30pm and take place Wednesday to Sunday from November 17–December 31. Admission is free for children 11 years and younger and \$6 for guests 12 and up.

More information can be found at www.oceancitymd.gov/oc/departments/special-events/winterfest.



Photo courtesy of Winterfest of Lights

The Winterfest of Lights in Ocean City features an expanded walking tour that takes visitors through thousands of sparkling holiday lights and animated displays.

THE POLAR EXPRESS TRAIN RIDE AT B&O



Photo courtesy of the B&O Railroad Museum

B&O Railroad Museum guests can watch a live performance of "The Polar Express" while enjoying cookies and hot chocolate.

Relive one of the greatest holiday films when you climb aboard The Polar Express Train Ride at B&O, located at 901 West Pratt Street in Baltimore.

Riders are encouraged to wear their pajamas as they watch the live performance of "The Polar Express" while enjoying cookies and hot chocolate. Like the story's main character, every passenger receives a special gift from Santa – a silver sleigh bell. Little ones also can meet and take pictures with Santa.

Event dates are November 25-27 and December 2-4, 9-11 and 16-19. Tickets range from \$47 to \$67. Tickets are available at www.borail.org/events/polar-express.

PASADENA



**NEW
LOCATION**



**A LITTLE CERTAINTY...
IN AN UNCERTAIN WORLD.
WE HAVE A SOLUTION.**



**10% OFF
ALL MERCHANDISE**

With this coupon. Expires January 31, 2023.



410-255-1272



2515 Mountain Road

Pasadena, MD 21122

www.PasadenaPawnandGun.com



**The Staff at Pasadena Pawn and
Gun want to wish you a Merry
Christmas and Happy New Year!
Remember, Jesus is the
reason for the season!**



Handmade For The Holidays: Artists Craft Unique Gifts

By Zach Sparks zach@severnaparkvoice.com

From soup bowls and piggy banks to vases and ornaments, 64 pieces by Arnold artist Lynn Goff are being featured in “Form and Fabric XI – Artistic Gifts of the Season,” held at the visitor center at Quiet Waters Park in Annapolis from November 23 through January 3.

The holiday season offers Goff a chance to sell many of her wares, but her work continues year-round. She discovered a passion for the arts during childhood and that affinity has not slowed with time.

“I lived along the Severn River and liked playing with the mud,” said Goff, who previously taught for Anne Arundel County Public Schools before retiring in 2019.

From her home, she works with her pottery supplies: a wheel and her kiln.

“I love experimenting,” she said. “Clay is a never-ending source of entertainment.”

She was always drawn to sewing on a wheel, but by hand-building items, she has been able to combine two skills. One new project is a good example: a clay sailboat with a fused glass sail.

She starts by working with clay and adding decoration. Then, the piece has to dry and be trimmed. When the item is dry, it can be bisque-fired in the kiln and then glazed.

“It’s kind of like frosting the cake,” Goff said of the last step.

While the process can be a solitary effort, she has enjoyed meeting with other artists since about the time the coronavirus arrived in Maryland. Members gather in a driveway, or in a garage during bad weather. They call their group Garage Art.

“It’s fun to bounce ideas around,” she said. “That’s what community is all about.”

Goff’s works can be found at the Quiet Waters show and at Side Street Framers & gift gallery, located in the Park Plaza shopping center in



Lynn Goff uses a wheel that rotates so her hands are free to shape the clay.



“I love experimenting. Clay is a never-ending source of entertainment.”



As a child, Terri Hechler drew characters for art contests. When she got older, she started “dabbling in different things.”

“My mind is constantly creating. One day I’m canvas painting, and the next day I’m engraving, and the next day I’m woodworking.”

Severna Park. She also posts photos of her work on Instagram.

“[Side Street co-owner] Dawn Wilson has a good eye for arranging things in a beautiful way,” Goff said.

The holidays are also a busy time for former Severna Park resident and current Pasadena artist Terri Hechler. She’s currently working on several projects, including glass ornaments. Designs feature crabs, jellyfish, oysters and cardinals with birch trees, among others.

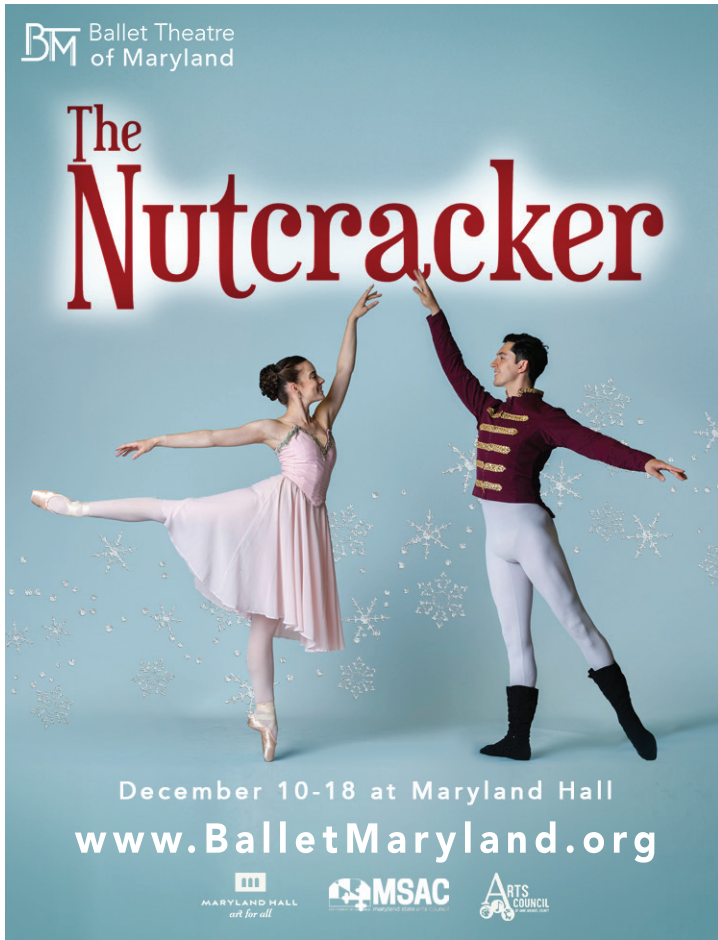
“I like to use glass or gloss enamel paint,” she said. “Colors vary — some are blue, some are red, and some are orange.”

She also makes other items. Bottle lights with snow and pinecones. Old Bay and salt and pepper shakers with crab designs. She signs all her artwork.

Hechler enjoys reverse painting, a method of painting on the back of the glass first so the details can be seen from the opposite side.

Her work is located at Side Street Framers & gift gallery, Sand & Silo Marketplace in Pasadena, and she also has work available through direct sales.

“My mind is constantly creating,” Hechler said. “One day I’m canvas painting, and the next day I’m engraving, and the next day I’m woodworking. The engraving is done by hand. I love it because it’s very therapeutic.” ■



Ballet Theatre of Maryland

The Nutcracker

December 10-18 at Maryland Hall
www.BalletMaryland.org

MARYLAND HALL *art for all* MSAC ARTS COUNCIL



FISHPAWS MARKETPLACE

Sun - Fri 9am-9pm
 Saturday 8am-9pm

HOLIDAY EVENTS!

Saturday, November 19

- 12-3 - Ballotin Flavored Whiskies
- 1-4 - Korbel Sparkling & Chambord

Friday, November 25

- 12-6 - All Store Bottle Etching
 Debra will be here engraving any wine or spirit. This is an opportunity for a one of a kind gift. If you can't make the event, then you can preorder the product. Please speak to the manager on duty. All preorders must be paid in advance.
- 4-7 - Special Whiskey Releases
 Ragged Branch Fishpaw Barrel Pick Tasting

Custom Charcuterie Board



Let Teri our certified cheese specialist design a custom charcuterie board for your Fall and Winter events.

Fishpaws Marketplace
 954 Ritchie Highway, Arnold, MD
 410-647-7363 | www.fishpawsmarket.com

JOIN OUR   




HOMESTEAD GARDENS

Celebrate

THE HOLIDAY SEASON AT
Homestead Gardens

Holidays done the Homestead way.
 From poinsettias to fresh greens, seasonal accents to tablescapes, we have everything you need for an iconic holiday season.

Because life should be beautiful!

522 RITCHIE HIGHWAY • SEVERNA PARK, MD 21146
www.HomesteadGardens.com

Woodworkers Craft Toys For Kids Countywide

By Zach Sparks
zach@severnaparkvoice.com

It may not be the North Pole, but the Severna Park garage of Andy Borland is transformed into a magical place each year as members of the Annapolis Woodworkers Guild create about 3,000 toys as gifts for children. The tradition started in 2013.

Borland said his group uses about 80 templates to create a variety of toys for boys and girls.

"We make cars, buses, boats, helicopters, airplanes, tractors — all kinds of things," Borland said. "We make pickup trucks because some kids in South County might want trucks and tractors instead of fancy cars and limos."

For girls, the group makes doll beds that are furnished with miniature quilts made by the Annapolis Quilt Guild.

Toys get distributed to Anne Arundel County churches and to holiday-themed events, such as craft bazaars.

The woodworkers, or "elves," who make the toys are Annapolis Woodworkers Guild President Ken Davis, Rob Harrell, Paul Dodson, Jim Cowan, Duncan Adams, Bill Carbin, Phil Carroll, founder Don Ames, and Borland.

"It's a good feeling that we can do this for the kids," Borland said, before giving credit to his fellow woodworkers. "These guys make me look good." ■

Top to Bottom: Annapolis Woodworkers Guild President Ken Davis worked on small toy pieces. Rob Harrell applied glue to a toy car. Bill Carbin created vehicle windows by putting holes in the wood. Phil Carroll put the finishing touches on a wooden car.



Chesapeake Ballet Company
Presents
The Nutcracker
Children's Theater of Annapolis
Guest Appearances by:
Jing Ying Institute

December 10-11 - 1:00 & 4:00 PM
December 16 - 7:00 PM
December 17 - 1:00 & 4:00 PM
December 18 - 1:00 PM

Join us on Saturdays
3:00 pm for
Cocoa with Clara.

Adult \$25
Child \$20

Come visit us!

Sunday Worship Service – 11:00am
Online and In-Person

12/24 – 6:00-6:45pm
Christmas Party
In-Person

12/24 – 7:00pm
Christmas Eve Service
Online and In-Person

12/25 – 11:00am
Christmas Day
ONLINE ONLY

**Experience God.
Find Community.
Fulfill Your Purpose.**

410-647-4561
99 Truck House Road
Severna Park, MD 21146
www.trinitysevernapark.org

Elves For Elders Is Set To Deliver Christmas Joy

Santa and Mrs. Claus attended the Elves for Elders stocking-stuffing party in 2021. The small operation collected 80 stockings in 2015 and the number has risen ever since.



By Judy Tacyn

Since 2015, Partners In Care, Maryland, has delivered Christmas joy to seniors through its Elves for Elders program.

The program delivers stuffed Christmas stockings to seniors who are isolated from the community, have little or no family or friends living in the area, or are financially struggling.

Partners In Care volunteer Susan Origlio started the program to honor her father after his death and to remember her parents' strongly held belief that it's always better to give than to receive. The small operation collected 80 stockings in 2015 and the number has risen ever since. Last year, the program collected 371 stockings, and Origlio aims to collect at least 400 this year.

Origlio remembers growing up and feeling that the holidays were more about being together than the commercialized fascinations of Black Friday or cyber sales. Rather than focus on other things, Origlio prefers remembering why we celebrate the season and to show gratitude for blessings.

"In gift-buying and wrapping paper, we lose the story of the birth of a baby in



Bethlehem," Origlio said. "We worry about the perfect menu, the perfect gift, and often never pause to count our blessings and think about those less fortunate."

Having lost both of her parents, Origlio said she keeps the program going to preserve their memory and the lessons they imparted upon her.

"I want to keep this event genuine," Origlio said.

Studies show that even before the pandemic, there was a loneliness epidemic among the elderly, and Origlio said there are inevitable losses that even the healthiest seniors face. She cited losing loved ones and friends along with decreased energy and mobility levels as a couple of examples.

"They can no longer do many of the things associated with getting ready for the holidays," Origlio said. "They've been used to doing things for others, and now they have to depend on others more than they would like to."

Origlio stressed the importance of kindness and the power that it holds. She hopes people will join her to spread the cheer.

How You Can Help

Individuals, families, coworkers, teams and friends looking for a community service project this year are welcome to participate in the Elves for Elders program. To participate, start by collecting stockings (approximately 16 inches) or sturdy Christmas gift bags (at least 9 inches) and fill each with items that would be gifted to

a friend or family member.

In addition to accepting only new items, Origlio requests that edible items must be store-bought and not expired. One way to personalize a stocking is to include a handwritten note or Christmas card with well wishes from the donor. Stockings and gift bags must be marked male, female or general.

Some items that Origlio said would be good stocking stuffers include flashlights with batteries and night lights, hygiene

products, warm clothing accessories, puzzles, books, candy, scratch-off lottery tickets, sewing kits and stationery. She cautioned not to include unwrapped items that are strongly scented, CDs or DVDs, and alcohol.

Drop-Off Instructions

Completed stockings or gift bags may be dropped off at Partners In Care, Maryland, located at 8151 Ritchie Highway in Pasadena. The dates for collection are November 17, 22, 29 and December 1. Donations are accepted from 10:00am to 2:00pm on those dates.

If you can't make the official dates to deliver your donation, the group's holiday party on December 3 at Frisco's Tap-house in Gambrills affords a final opportunity for drop off at 3:00pm and afterward.

The program also accepts financial donations and gift cards. Interested donors can do so at partnersincaremd.salsalabs.org/e4e2022. Checks payable to Partners In Care, Maryland, Inc. are also welcome. In the note section of your check, write "Member Care." For tax purposes, a donor acknowledgement letter will be provided.

This holiday season, Partners In Care reminds everyone that older adults don't necessarily want things; they want time and love and companionship.

"You will love the feeling you get of bringing simple joy into someone's life," Origlio said.

For more information, contact Origlio at sueoriglio@partnersincare.org.



1195 Baltimore-Annapolis Blvd #6, Arnold, MD

Holiday Special!



Buy One Month of Unlimited Classes*
for **only \$75.00** & get a free t-shirt
PLUS get a gift certificate for a friend to join you
at no additional cost. * New students only

Upcoming event: Dec 17 (Sat) 3-4pm - Silent Auction at Jing Ying for non-profit,
Good Neighbors Group. Visit JingYing.org for more details. Open to all.

*Good
for kung fu
or tai chi!

Contact: info@JingYing.org or 410-431-5200

www.JingYing.org

Offer expires
1/31/2023

Side Street Framers & gift gallery

Featuring work
by Jane Ferguson



Locally owned and operated.

Always Fully Stocked,
Made In The USA By
Local Artisans!

Specializing In:

- Custom Picture Framing
- Shadow Boxes
- Photo Restoration
- Locally Made Arts and Gifts
- Still Framing for Christmas

Hand-blown Glass
Trees make perfect
gifts for that
special someone!



410-544-9050 | 558-B Ritchie Hwy, Severna Park | www.sidestreetframers.com



CELEBRATING 32 YEARS



Capri Pizza & Sub Express

NEW YORK STYLE PIZZA

Famous Chicken Caesar Salad
Homemade Bread & Italian Recipes

WE CATER

Celebrating our 32nd Anniversary
Saturday, November 19th with
complimentary Italian Cookies
and Cannoli with your purchase!

Happy Holidays from the Misuraca
family. We've been serving you the
best pizza in town for three generations.

Since 1990

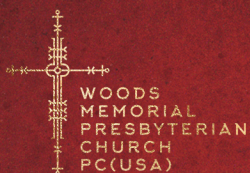
337 Hospital Drive, Glen Burnie, MD 21061

410-766-2525

www.capripizzasubs.com

Eat-In or Carry-Out

Mon. - Sat. 10:30am - 10pm | Sun. 11am - 10pm



WOODSCHURCH.ORG

CHRISTMAS

AT WOODS CHURCH

Special Holiday Services

DECEMBER 9 & 10 AT 7PM:
CHRISTMAS CONCERT

DECEMBER 17 AT 3PM:
"MESSIAH" SING-ALONG

DECEMBER 20 AT 7PM:
"BLUE CHRISTMAS"
SERVICE

9:30AM & 11AM Worship Services

NOVEMBER 27:
ADVENT HOPE

DECEMBER 4:
ADVENT PEACE

DECEMBER 11:
ADVENT JOY

DECEMBER 18:
ADVENT LOVE

Christmas Eve Services

3PM & 4PM:
FAMILY PAGEANT SERVICES

6PM:
CONTEMPORARY SERVICE

8PM:
TRADITIONAL SERVICE
WITH SPECIAL MUSIC

10PM:
COMMUNION AND
CANDLELIGHT SERVICE

Join us for 10AM worship on Dec. 25th & Jan. 1st!



Merry 
CHRISTMAS

and happy new year from your friends at

SEVERNA PARK VOICE 

SERVING OUR COMMUNITY SINCE 1981

Midnight Madness Is Back Bigger And Better In Annapolis

About 90 stores and 80 restaurants in the downtown Annapolis area participate in this late-night shopping event.

The Downtown Annapolis Partnership has announced the dates of this year's Midnight Madness shopping nights as December 1, 8 and 15. "These festive shopping nights, sponsored by Sheehy Lexus of Annapolis, are the biggest shopping days of the year in Annapolis," said Erik Evans, executive director of the Downtown Annapolis Partnership.

About 90 stores and 80 restaurants in the downtown Annapolis area participate in this late-night shopping event. The main festive shopping areas include West Street, Maryland Avenue and Main Street. The City Dock area will be filled with traditional holiday decorations including beautiful storefront windows, garland, wreaths, holiday lights, snowflake alley, light canopies, a large Christmas tree and a menorah.

"This will create a fun, safe, outdoor holiday environment for late-night shopping and dinner with your family," said Judy Buddensick, the chief elf for planning the on-street festivities. "We have invited all the entertainers to return this year after having some take a break during the past few years."

The Midnight Madness shopping event starts at 4:00pm for early birds looking to avoid the busier evenings or those wanting to start the evening at one of the many local happy hours. The entertainment starts at 6:00pm. Shoppers are encouraged to wear festive holiday attire and to take time to pose for photos in front of the Christmas tree on Market Space sponsored by South Annapolis Yacht Centre, in Snowflake Alley on Main Street sponsored by RBC Wealth Management, and under the light canopies on Maryland Avenue and West Street.

A new addition for December 1 features some merchants offering deals on local gift card purchases in addition to all the great in-store gift items. On December 8, there will also be a new outdoor Annapolis Holiday Market on the City Dock.

While Midnight Madness events are the biggest shopping nights of the year, many of the shops will also open until 9:00pm on other evenings in December, especially Friday and Saturday evenings. Other popular holiday events downtown include the Hanging of the Greens on December 3, Annapolis Chocolate Festival and the Debbie Gibson Winterlicious concert December 4, Annapolis Holiday Market December 8-11, Eastport Light Parade December 10, Holiday Candlelight Stroll every Friday and Saturday in December, and the Jolly Roger boat tours on Fridays in December.

Free parking is available every evening during Midnight Madness at the Calvert Street parking garage (19 St. Johns Street) from 6:00pm to 6:00am and \$2 evening garage parking from 4:00pm to 6:00am is available at the Whitmore Parking Garage (25 Clay Street). On-street metered parking is free with a two-hour limit. The free circulator bus runs along West Street, where there is an abundance of parking garages and will pick you up and drop you off at the Park Place and Knighton parking garages and has drop-offs downtown along West Street, Main Street and Church Circle.

For more information on Midnight Madness, visit www.midnightmadnessannapolis.com. ■



Midnight Madness



Holiday Events Calendar

ONGOING

Through Nov 30: Admiral Cleaners is collecting seldom used and outgrown coats for people in need. Info: 410-267-8381.

Through Dec 2: Arundel Federal Savings Bank is collecting toys for the holidays. Info: 410-544-9600.

Through Dec 11: SPAN's Christmas Holiday Caring program is accepting donations. Info: www.spanhelps.org.

Through Dec 31: Ocean City's Winterfest of Lights takes place Wednesdays to Sundays from 5:30pm-9:30pm. Info: oceancitymd.gov/oc/departments/special-events/winterfest.

Through Jan 1: The Maryland Zoo's Christmas light display runs through January 1. Info: marylandzoo.org/special_events/zoo-lights.

Through Jan 1: Holiday train garden at Homestead Gardens in Severna Park. Info: 410-384-7966.

Through Jan 8: Holiday train garden at Marley Station Mall in Glen Burnie. Info: 410-760-8900.

Through Jan 15: Toby's Dinner Theatre presents "It's A Wonderful Life." Info: www.tobysdinnertheatre.com.

NOVEMBER

Nov 19: Christmas Village in Baltimore runs through Christmas Eve. Info: www.baltimore.org/event/christmas-village-in-baltimore.

Nov 20: Lights on the Bay at Sandy Point State Park in Annapolis runs through January 1. Info: lightsonthebay.org.

Nov 24: Thanksgiving

Nov 25: Nationals Park in Washington, D.C., is taken over by the magical event of Enchant through January 1. Info: www.enchantchristmas.com/washington-dc-nationals-park.

Nov 25: Classic Theatre of Maryland presents "White Christmas" through December 24. Info: classictheatremaryland.org.

Nov 25: The Baltimore & Ohio Ellicott City Station Museum's holiday train garden through January 8 (Wednesdays to Sundays). Info: 410-313-1945.

Nov 25-27: The Polar Express Train Ride at B&O in Baltimore. Info: www.borail.org/events/polar-express.

Nov 26: St. John the Evangelist Advent Market from 11:00am to 4:00pm. Mass at 5:15pm. Live nativity at 6:15pm. Santa will also be available for pictures. Info: 410-647-4884.

Nov 26-27: The Fire Museum of Maryland's holiday train garden in Timonium is open from 10:00am to 4:00pm. Info: 410-321-7500.

Nov 26-Dec 18: Homestead Gardens in Severna Park hosts Santa on select dates between 10:00am and 1:55pm. Register at www.homesteadgardens.com/upcoming-event/santa-in-severna-park.

DECEMBER

Dec 1: Midnight Madness in Annapolis from 4:00pm to midnight. Info: www.midnightmadnessannapolis.com.

Dec 1: Cheers & Spirits in Arnold has a holiday train garden display through December 31. Info: 410-571-3486.

Dec 1-4: Clayville Railroad Outdoor Train Garden in Pasadena. Info: www.facebook.com/clayvilleroadsc.

Dec 2: The Severna Park Chamber of Commerce will have its tree lighting from 5:00pm to 6:30pm. Santa and the Grinch will also be available for photos. Register at web.gspacc.com/events.

Dec 2: Pasadena Theatre Company presents "How the Grinch Stole Christmas" through December 11. Info: www.ptcshows.com.

Dec 2-4: The Polar Express Train Ride at B&O in Baltimore. Info: borail.org/events/polar-express.

Dec 3: Fence & Deck Connection hosts Santa Under the Stars at its Millersville location from 4:00pm-7:00pm. Info: 410-757-5511.

Dec 3: Kinder Farm Park Jingle Bell Hayride from 10:15am-12:45pm. Santa and Mrs. Claus will also be in attendance. Info: www.kinderfarmpark.org/jbh2022.html.

Dec 3: Santa will be at Cheers Wine & Spirits from 11:00am until 2:00pm for photos with pets. Info: 443-221-7340.

Dec 4: Santa and his elves will be at the Children's Theatre of Annapolis for a Breakfast with Santa event from 9:00am to 10:30am. Info: www.childrenstheatreofannapolis.org.

Dec 6: Pasadena's official Christmas tree lighting is scheduled for 5:30pm at Lakeshore Plaza. Info: www.pasadenabusinessassociation.com.

Dec 6-31: Rams Head On Stage has a full slate of holiday events at its Annapolis venue this season. Info: www.ramsheadonstage.com.

Dec 7: Holiday-themed girls night out at Homestead Gardens in Severna Park and Davidsonville from 6:00pm to 9:00pm. Info: www.homesteadgardens.com/upcoming-event/girls-night-out2022.

Dec 8: Midnight Madness in Annapolis from 4:00pm to midnight. Info: www.midnightmadnessannapolis.com.

Dec 8-11: Clayville Railroad Outdoor Train Garden in Pasadena. Info: www.facebook.com/clayvilleroadsc.

Dec 9: Talent Machine Company presents "Holiday Wishes" through December 23. Info: www.talentmachine.com.

Dec 9-11: The Polar Express Train Ride at B&O in Baltimore. Info: www.borail.org/events/polar-express.

Dec 10: Santa will travel down the B&A trail to collect nonperishable food for the Anne Arundel Food Bank. Info: www.friendssofarails.org/santa-on-the-trails.

Dec 10: Ballet Theatre of Maryland presents "The Nutcracker" through December 18. Info: www.balletmaryland.org/nutcracker.

Dec 10: Eastport Yacht Club Lights Parade from 6:00-8:00pm along Annapolis Harbor. Info: 410-267-9549.

Dec 10: Santa Cow will return to the Severna Park Chick-fil-A from 8:00am-10:00am. Info: 410-647-6232.

Dec 10-11: The Chesapeake Ballet Company presents "The Nutcracker" at the Children's Theatre of Annapolis. Info: www.chesapeakeballetcompany.com.

Dec 15: Midnight Madness in Annapolis from 4:00pm-11:00pm. Info: www.midnightmadnessannapolis.com.

Dec 15-18: Clayville Railroad Outdoor Train Garden in Pasadena. Info: www.facebook.com/clayvilleroadsc.

Dec 16-18: The Chesapeake Ballet Company presents "The Nutcracker" at the Children's Theatre of Annapolis. Info: www.chesapeakeballetcompany.com.

Dec 16-19: The Polar Express Train Ride at B&O in Baltimore. Info: borail.org/events/polar-express.

Dec 17: Santa Cow will return to the Severna Park Chick-fil-A from 8:00am-10:00am. Info: 410-647-6232.

Dec 18: First night of Hanukkah

Dec 22-23: Clayville Railroad Outdoor Train Garden in Pasadena. Info: www.facebook.com/clayvilleroadsc.

Dec 25: Christmas

Dec 26: First day of Kwanzaa

Dec 27: A Miracle on Annapolis Street runs from 11:00am to 5:00pm. Info: militarybowl.org/miracle-annapolis-street.

Dec 28: 2022 Military Bowl at Navy-Marine Corps Memorial Stadium in Annapolis. Info: militarybowl.org/military-bowl.

Lights On The Bay Returns November 20



The 26th annual Lights on the Bay holiday light show benefitting the SPCA of

Anne Arundel County is set to run from November 20 through January 1. Taking place at Sandy Point State Park in Annapolis, the event features a two-mile scenic drive along the Chesapeake Bay with approximately 70 animated and stationary displays illuminating the roadway.

This year's displays range from holiday influenced designs to lights inspired by historic Annapolis. Visitors are awed by the animated lights, including one of the United States Naval Academy midshipmen tossing hats into the air.

Lights on the Bay has something for everyone in the family. Children can participate in a nightly scavenger hunt, challenging them to find items within the show, answer display-related questions and enter a drawing to win prizes. As always, Santa will make an appearance on Thanksgiving.

Sandy Point State Park is located off Route 50, at exit 32, near the Bay Bridge. The show is open to drivers each night, including holidays, from 5:00pm to 10:00pm. Admission is \$20 per car. Large passenger vans, small buses and trolleys are \$30. Buses gain entry for \$50. Discount coupons are available through local publications and at many retail locations. ■

www.barnandlodge.com



Weekly Specials Monday - Thursday, 5-9PM



Monday
Half Price Burger Night



Tuesday
NY Strip Night \$26



Wednesday
Half Price Pasta Night



Thursday
Prime Rib Night \$38



Join us for
brunch, lunch
or dinner —
book your
reservation
today.

USPS Releases Holiday Shipping Deadlines

By Mark Patton
mark@severnaparkvoice.com

The United States Postal Service, or USPS, has released guidelines to ensure that your holiday packages and cards get to their destination in time.

Whether you're mailing items for Hanukkah, Christmas, Kwanzaa or other holiday traditions, the earlier you can send your items, the better off you'll be.

Although the postal service expects the busiest mailing, shipping and delivery period to be from December 12-17, postal officials anticipate a steady stream of gifts and cards traveling to front steps and mailboxes throughout the season.

According to the USPS, roughly 149 million people will visit its website this season, and nearly 250 million customers will visit post office locations throughout the U.S. over the next few weeks.

For items shipped to and from the continental U.S. through the United States Postal Service, December 17 is the deadline to ensure delivery by Christmas Day for retail ground service and first-class mail service. December 19 and December 23 are the deadlines for priority mail service and priority mail express service,

respectively.

USPS spokesperson Sue Brennan advised customers to check www.usps.com/holidaynews for postal updates throughout the season. The site also includes holiday guidance for international mail along with military and diplomatic overseas shipping deadlines.

Postal employees are advising customers to place a card inside the package with delivery and return addresses, use quality shipping tape when sealing boxes and ensure the package weighs no more than 70 pounds.

It's not all about the hustle and bustle of getting those holiday cards out and sending off gifts that you've packaged just right, though.

USPS is also offering a couple of programs this season to enhance the magic of Christmas for children.

North Pole Postmark

This program aims to add a dash of authenticity when Santa replies to mail from children with a postmark from the North Pole. The deadline to send letters in this program is December 10.

To participate, follow these steps:

1. Have the child write a letter to Santa and place it in an envelope addressed to: Santa Claus, North Pole.
2. Write a personalized response to the child's letter and sign it "From Santa."
3. Insert both letters into an envelope and address it to the child.
4. Add the return address: SANTA, NORTH POLE, to the envelope.
5. Ensure a first-class mail stamp is affixed to the envelope.
6. Place the complete envelope into a larger envelope with postage. Address it to:

**NORTH POLE POSTMARK
POSTMASTER
4141 POSTMARK DRIVE
ANCHORAGE, AK 99530-9998**

USPS Operation Santa

This 110-year-old program allows people to help spread the joy of Christmas to those who may be facing challenging times.

Starting November 28, individuals or

groups can visit uspsoperationsanta.com to register and then read through letters that children and families in need have written to Saint Nick.

The opportunity is then given to "adopt" a letter writer and send a gift that will arrive to the child or family from Santa. ■



Park Books

Find joy at your local bookstore

Get a free Park Books tote with a purchase over \$100

Holiday Wish List

- Meet **THE GRINCH**
- Meet **Santa**
- Parents' Night Out
- Meet the Elf on the Shelf
- Ugly Sweater Day
- Get my gifts online

Visit in-person or online!
www.parkbooksmd.com

555 Baltimore Annapolis Blvd

SEVERNA PARK VOICE

SERVING OUR COMMUNITY SINCE 1981

<p>Publishers</p> <p>Dianna Lancione Lonnie Lancione</p> <p>V.P., Operations</p> <p>Brian Lancione</p> <p>V.P., Business Development</p> <p>Jonathan Katz</p>	<p>Sales Account Executives</p> <p>Petra Roche Larry Sells</p> <p>Editor</p> <p>Zach Sparks</p> <p>Assistant Editor</p> <p>Mark Patton</p>	<p>Editorial Assistant</p> <p>Lauren Cowin</p> <p>Reporters</p> <p>Alyson Kay Sharon Mager Lauren Meyer Judy Tacyn</p>
--	---	--

Cover Photo by Zach Sparks

Every year during the holidays, Andy Borland and the Annapolis Woodworkers Guild create toys as gifts for children throughout Anne Arundel County.

The Severna Park Voice is published by

THE VOICE MEDIA INC.

Family owned and operated since 1981

Please send your news to:
spvnews@severnaparkvoice.com
P.O. Box 608, Severna Park, MD 21146
410-647-9400

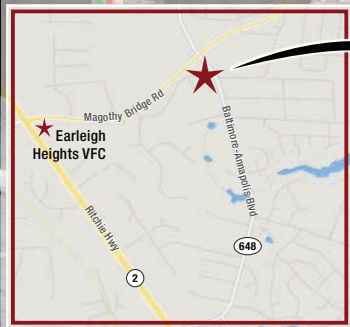
No part of this publication may be reproduced without permission of the publisher ©2022. The publisher is not responsible for any errors, omissions, etc. Views expressed are not necessarily those of the publisher.

RIGHT AROUND THE CORNER FROM EVERYWHERE!

Follow Us On Facebook 

Over 200 Craft Beers

New Local Craft Beers Weekly



Corwell & Son Liquors

170 Baltimore-Annapolis Blvd.
Severna Park, MD 21146
410-647-9336

Only 2 Miles from Mountain Road
"Best Kept Secret on the edge of Pasadena"

Less Than 1 Mile From Earleigh Heights Volunteer Fire Company

Corwell & Son Liquors

December Sales – 12/1/22-12/31/22

Pappy Van Winkle 12-Year Raffle in December

Check Out Our Monthly Specials In Voice Values

BEER/SELTZERS

- | | | |
|---|--|---|
| COORS LIGHT
18pk (cans) 12⁹⁹ | FLYING DOG
12pk (cans) 15⁹⁹ | SHOCK TOP
15pk (cans) 14⁹⁹ |
| BUD & BUD LIGHT
18pk (bottles) 13⁹⁹ | NATURAL LIGHT
30pk (cans) 18⁹⁹ | TWISTED TEA - REGULAR
LIGHT, PEACH, HALF & HALF
12pk (cans) 14⁹⁹ |

LARGE SELECTION OF HOLIDAY & WINTER BEERS!

SPIRITS

- | | | |
|--|---|--|
| TITO'S
1.75 Ltr 28⁹⁹ | FIREBALL
1.75 Ltr 20⁹⁹ | CAPTAIN MORGAN
1.75 Ltr 22⁹⁹ |
| WOODFORD RESERVE
BOURBON 750 ml 29⁹⁹ | BACARDI RUM
1.75 Ltr 19⁹⁹ | GRAND MARNIER
750 ml 29⁹⁹ |

MORE THAN 100 BOURBONS & WHISKEY IN STOCK!

MOST COMPETITIVE PRICES AROUND!

WINE

- | | |
|---|--|
| BOTA BOX
3 Ltr (box) 15⁹⁹ | KENDALL JACKSON
CHARDONNAY 750 ml 12⁹⁹ |
| JOSH CABERNET SAUVIGNON
750 ml 10⁹⁹ | 19 CRIMES
ALL TYPES 750 ml 7⁹⁹ |

MORE THAN 20 IN-STORE SPECIALS EVERY MONTH!

- | | |
|--|--|
| MATUA
NEW ZEALAND SAUVIGNON BLANC 750 ml 9⁹⁹ | EDUCATED GUESS
NAPA CABERNET SAUVIGNON 750 ml 21⁹⁹ |
|--|--|

WINTER EVERYDAY SPECIAL

- | |
|--|
| DECOY
CABERNET SAUVIGNON 750 ml 16⁹⁹ |
|--|

15% OFF CASE WINE PURCHASES YEAR ROUND (Includes Mix & Match)



*Light up the holidays
in your dream home*

Here at Embrace, we're dedicated to finding you the mortgage that helps you settle into your home as smoothly as possible, so you can focus on this delightful time of year. That means offering a suite of options designed to meet your needs given your unique financial situation.

Embrace offers:

- VA loans
- Jumbo loans
- Conventional loans
- First-Time Homebuyer programs
- FHA
- DSCR
- USDA
- Beyond by Embrace
- Approved to Move™
- Affordable Housing loans
- Extended Rate Lock*

Our commitment to flexibility helps us make dream homes a reality for borrowers.

Call me today to learn more about how we can make your holiday housewarming even warmer.



Mary Beth Henderson

Senior Loan Officer | NMLS #212801
c: 410.940.8405 | ph: 800.333.3004 x3518
1907 West St, Suite 102, Annapolis, MD 21401
mhenderson@embracehomeloans.com
mhenderson.embracehomeloans.com

embrace[®]
home loans



Embrace Home Loans, Inc. NMLS #2184; 25 Enterprise Center, Middletown, RI 02842,
Phone 800.333.3004, www.nmlsconsumeraccess.org

*Disclaimer: Not a commitment to lend. Conditions and fees apply. Embrace Home Loans reserves the right to cancel this offer at any time. Interest rates are determined on the day you lock your rate. If published rates fall below your locked rate, Embrace Home Loans will allow a one-time offer to relock at the lower rate.